



IMPOSSIBLE  
KAGOME



*SETTING THE STANDARD*



At Industry Standard Electric, Inc., we bring high standards to the electrical industry by way of a partnership with employees, customers, and vendors who are empowered to learn, discover and work in a manner that protects the health and safety of all those involved and the environment around us.

Corporate: 1700 Olympic Dr. Turlock, CA 95380  
Turlock: 1650 Olympic Dr. Turlock, CA 95380  
San Luis Obispo: 723 Woodbridge St San Luis Obispo, CA 93401  
LIC # 1031156  
OFFICE: (866) 299-7660  
SLO: (805)888-1306  
OFFICE HOURS: 8:00AM-4:30PM







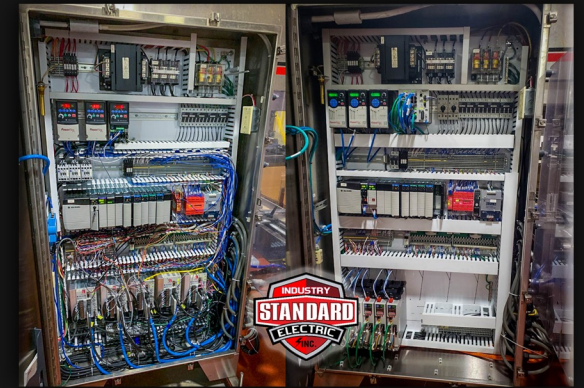
## WHO WE ARE

Industry Standard Electric, Inc is dedicated to positively impacting the electrical industry by protecting the environment, the health, and safety of employees, and the communities where we operate with a resonating focus to generate company sustainable growth via clear visions, values, and goals that inspire innovative commitment to the synergy of our customers and the ISE's brand.



## WHAT WE DO

- Industrial Electrical Distribution Installations
- Industrial Electrical Controls; maintenance and support
- Industrial Communication; fiber and copper installations, network infrastructure surveying and design
- 508A UL Listed Panel Shop
- Design Build or As-built drawings for all projects
- Thermography Survey for preventative maintenance



## OUR MISSION STATEMENT

It is the intention of management to provide our employees and visitors with a safe and healthy place to work and visit. To this end, we have pledged ourselves to a Safety Program that will maintain the environment we desire and will always be sensitive to changing conditions, requirements, and hazards in the workplace.

It is the policy of our company to:

- Avoid accidents and their pain, suffering, loss of time, and impairment of earning power for both the company and the employee
- Maintain neat, clean, safe, attractive and healthy working conditions
- Comply with Federal, State, and local requirements pertaining to fire prevention, accidental prevention, and environmental concerns



SEND INQUIRIES TO:  
**INFO@ISELECTRIC.COM**