



2023- 2024 BGS Afternoon Car Line Pick-Up

Please adhere to the following rules at all times for the safety of our students, as this is our top priority during car line. Bowling Green Administrators have been advised to refrain from cars lining up on the west side of Varnado Street and blocking the entrance to the school. Your cooperation in this is essential and appreciated.

Campus Speed Limit: 5 MPH

PK3-K Car Line Dismissal 2:25-2:35

Parents picking up during this time will enter on Manning Drive to Buccaneer Way. The line will begin at the gate nearest the tennis courts (See the yellow star on the map) and not proceed forward until the gate is opened or a staff member directs to do so.

After passing through the gate:

PK3 parents will turn right to pull through the PK3 building cover, and then exit on Varnado Street. Please see the yellow arrows on the appropriate map.

PK4 & K parents will turn left to pull towards the PK4 building and then turn right to begin pick ups along the front of the Kindergarten /Elementary buildings. Parents will then pull around the oak tree and loop back through the parking lot before turning right to exit on Varnado Street. Please see the green arrows on the appropriate map.

Main Car line opens at 2:55 pm.

Big car line will form across Main Street on the east side of Varnado Street (See yellow star and arrows for waiting area). No cars should line up on Main Street! **The traffic director will not allow cars to turn onto Varnado Street from Main Street.** Cars should not cross Main Street to the west side of Varnado Street prior to 2:55 or being signaled by a staff member. Cars will proceed to the appropriate locations.

Pick-up Locations for big car line:

*Elementary Line- PK4-4th grade students (5th-12th students are only allowed to utilize this line if they have a sibling in PK4-4th)

*This line will exit on Varnado Street

*Please see the green arrows on the appropriate map.

*Cafeteria Line- 5th-12th grade students

*This line will exit on Buccaneer Way

*Please see the red arrows on the appropriate map.



2023- 2024 BGS Afternoon Car Line Pick-Up

Car Tags: All cars must have the provided hanging tag displayed to ensure their student is notified in the Safe Dismissal system.

Reminders:

Ensure that you have your school provided hang tag displayed appropriately.

Never pull out of the car line until the duty teacher signals you to leave!

Any student not picked up by 3:20 will be sent to Aftercare, and the Drop In fee will apply.

NO CELL PHONE USE WHILE DRIVING ON CAMPUS (This include talking, texting, messaging, social media, etc.)

Aftercare: 2:30 pm -5:30 pm

PK3, PK4, & K Afternoon Car Line



PK3-K Car Line
Dismissal 2:25-2:35
Any student not picked up by 3:20 will be sent to Aftercare, and the Drop In fee will apply. If you will pick up after 2:35, you must follow the Main Car Line Map.

PK3

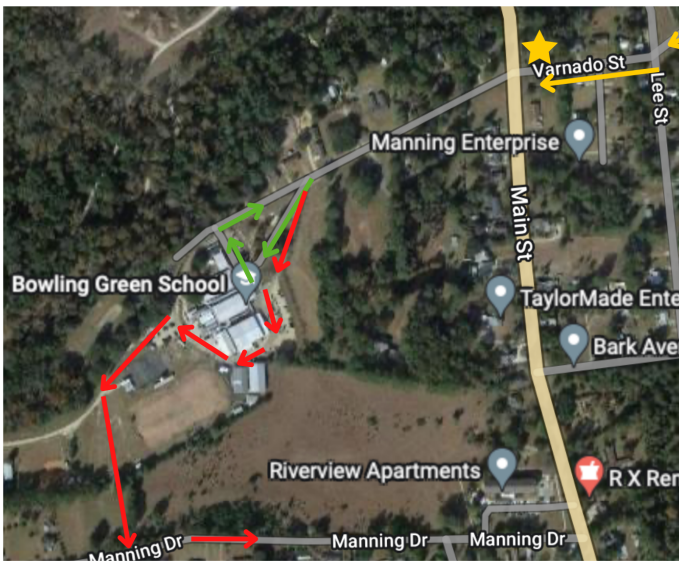
PK4 & K

Both Lines



2023- 2024 BGS Afternoon Car Line Pick-Up

Main Afternoon Car Line



Cars must not leave the waiting area until 2:55. Any student not picked up by 3:20 will be sent to Aftercare, and the Drop-In fee will apply. The traffic director will not allow cars to turn onto Varnado from Main Street.

Waiting Area K-4th 5th-12th

