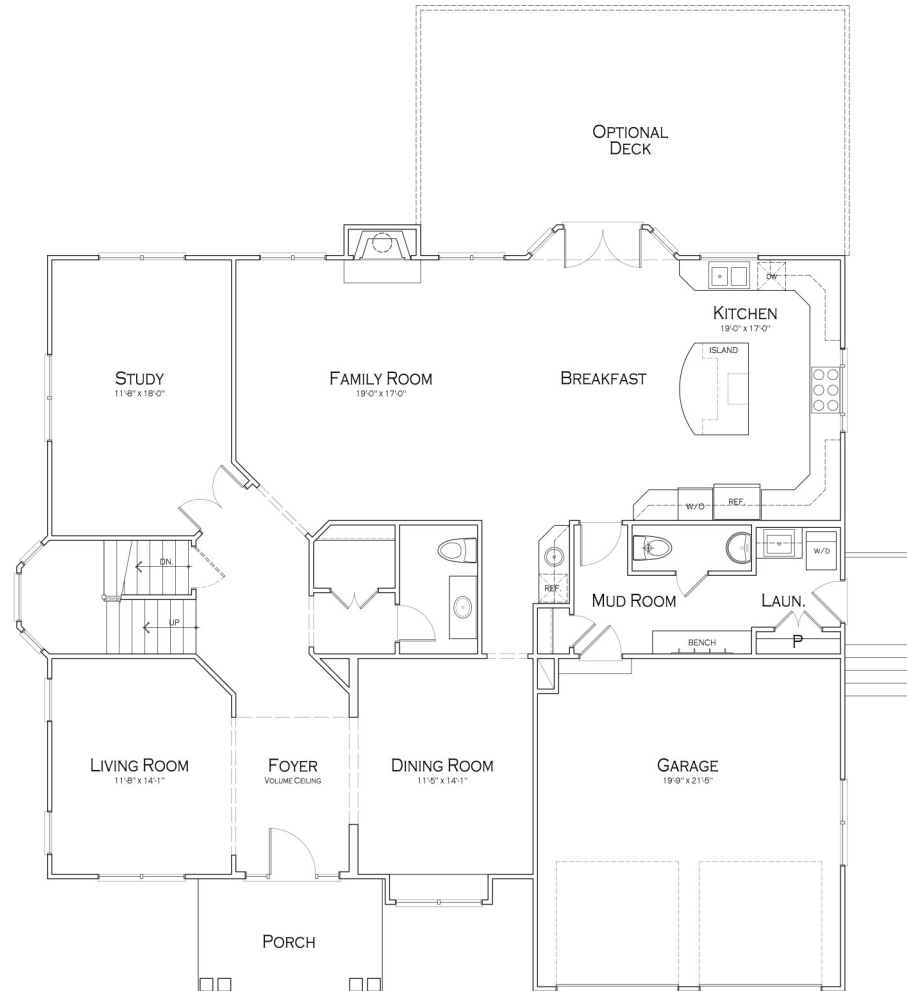


5,774 Finished Square Feet, 5 Bedrooms, 4 Full Baths, 2 Half Baths



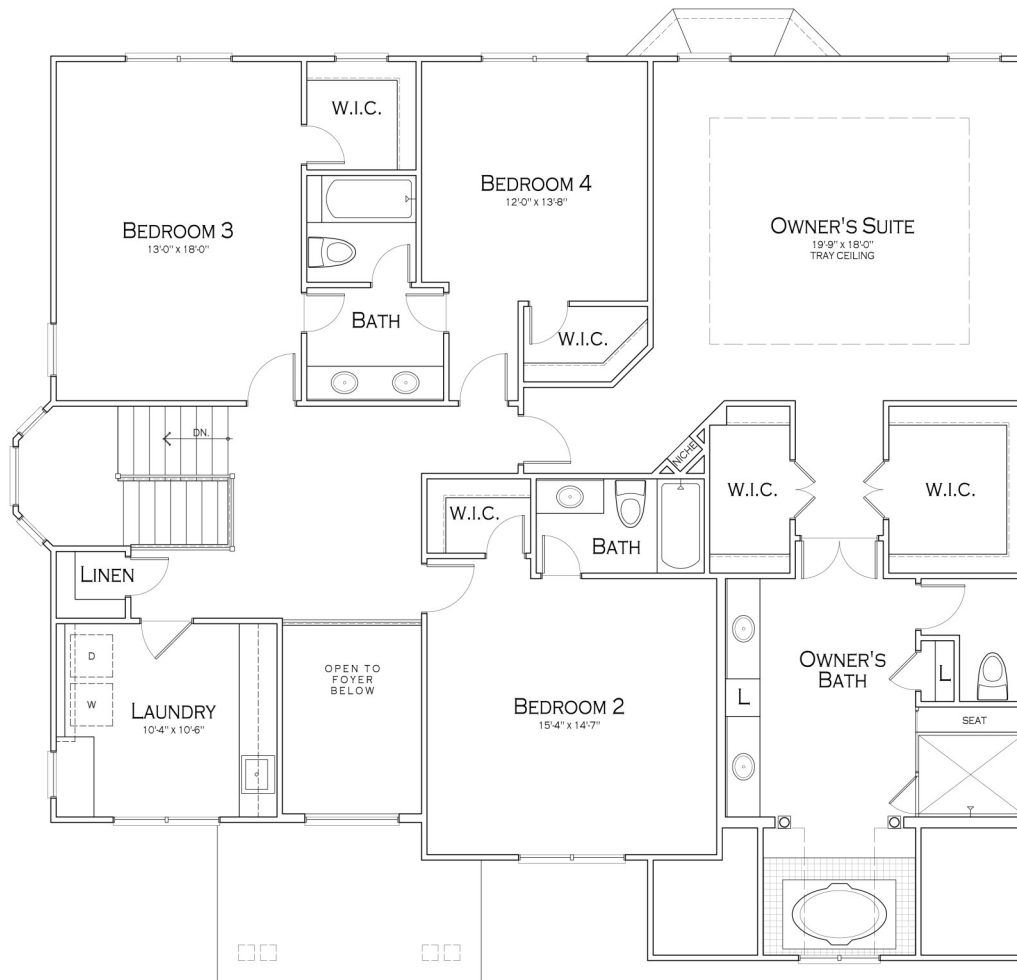
FIRST FLOOR PLAN
1,855 Sq.Ft.



All dimensions shown on plans are approximate. Plans and specifications are subject to modification and improvement at any time without notice or obligation. Room dimensions may vary between printed material, website, model homes and individually built homes. The elevations and floor plans are a rendering and accuracy cannot be guaranteed and is not part of a legal contract.



5,774 Finished Square Feet, 5 Bedrooms, 4 Full Baths, 2 Half Baths



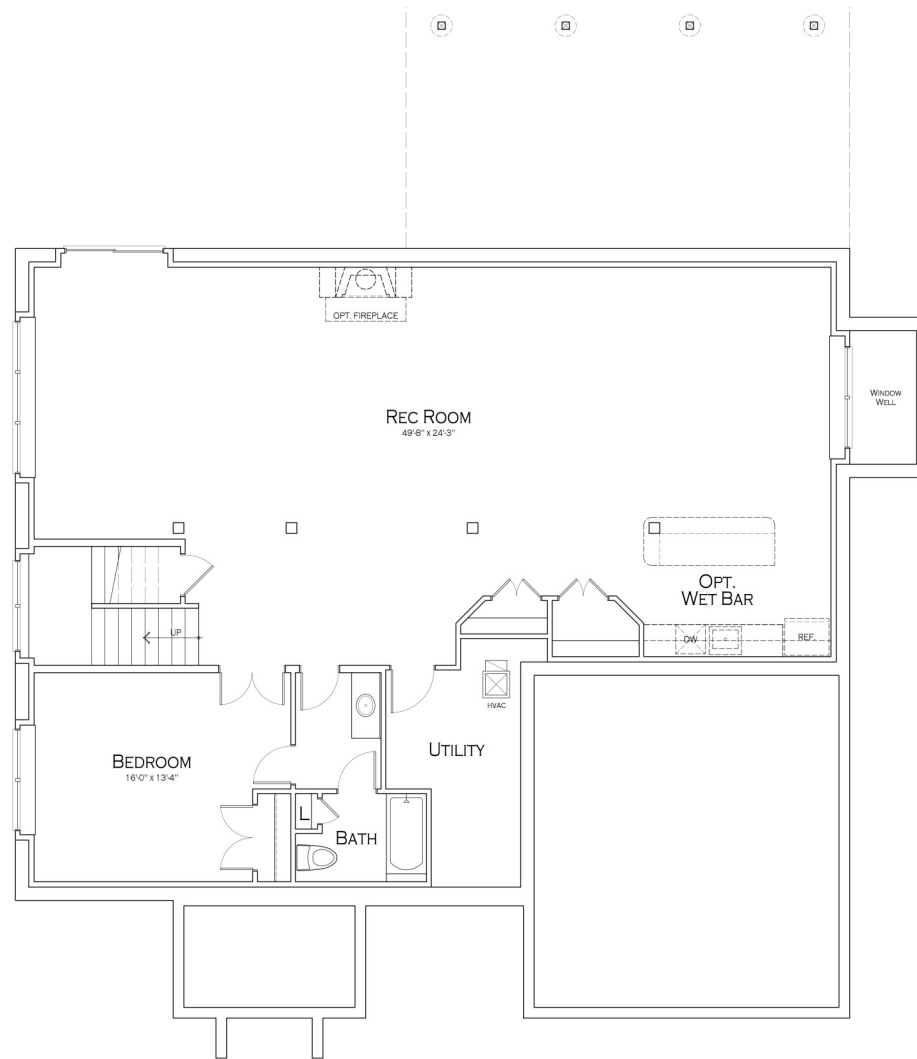
SECOND FLOOR PLAN
2,064 Sq.Ft.



All dimensions shown on plans are approximate. Plans and specifications are subject to modification and improvement at any time without notice or obligation. Room dimensions may vary between printed material, website, model homes and individually built homes. The elevations and floor plans are a rendering and accuracy cannot be guaranteed and is not part of a legal contract.



5,774 Finished Square Feet, 5 Bedrooms, 4 Full Baths, 2 Half Baths



BASEMENT FLOOR PLAN
1,580 SQ.FT.

All dimensions shown on plans are approximate. Plans and specifications are subject to modification and improvement at any time without notice or obligation. Room dimensions may vary between printed material, website, model homes and individually built homes. The elevations and floor plans are a rendering and accuracy cannot be guaranteed and is not part of a legal contract.

