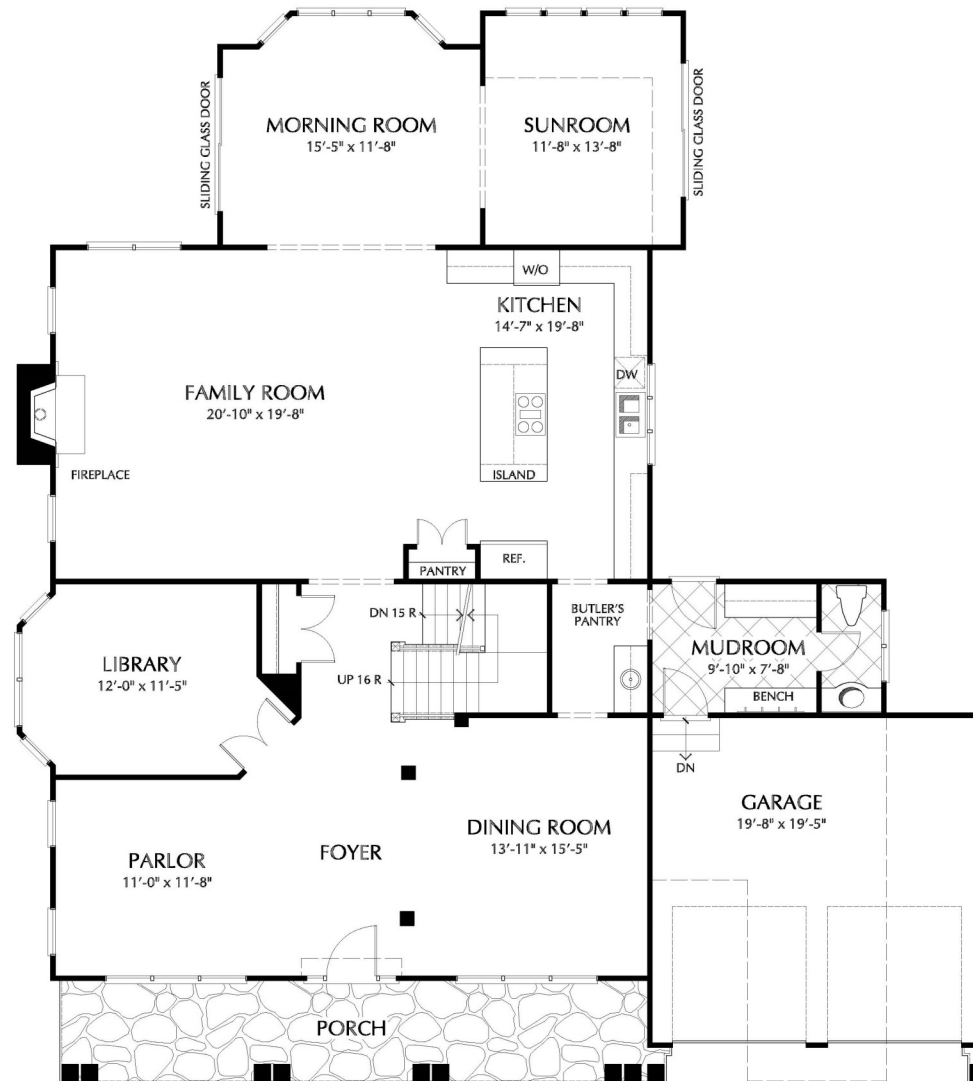


5,764 Finished Square Feet, 5 Bedrooms, 4 Full Baths, 1 Half Baths



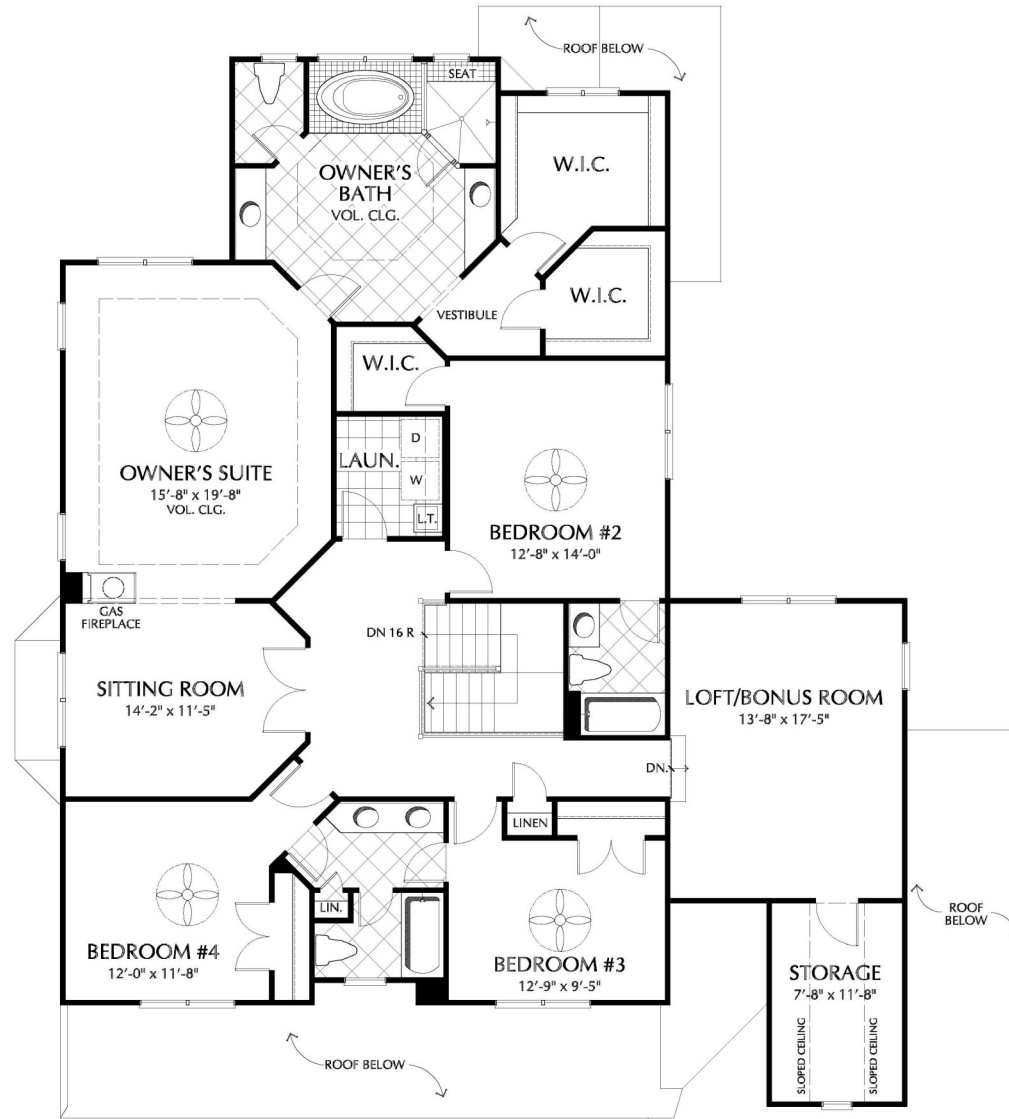
FIRST FLOOR PLAN

2,097 S.F.

All dimensions shown on plans are approximate. Plans and specifications are subject to modification and improvement at any time without notice or obligation. Room dimensions may vary between printed material, website, model homes and individually built homes. The elevations and floor plans are a rendering and accuracy cannot be guaranteed and is not part of a legal contract.



5,764 Finished Square Feet, 5 Bedrooms, 4 Full Baths, 1 Half Baths



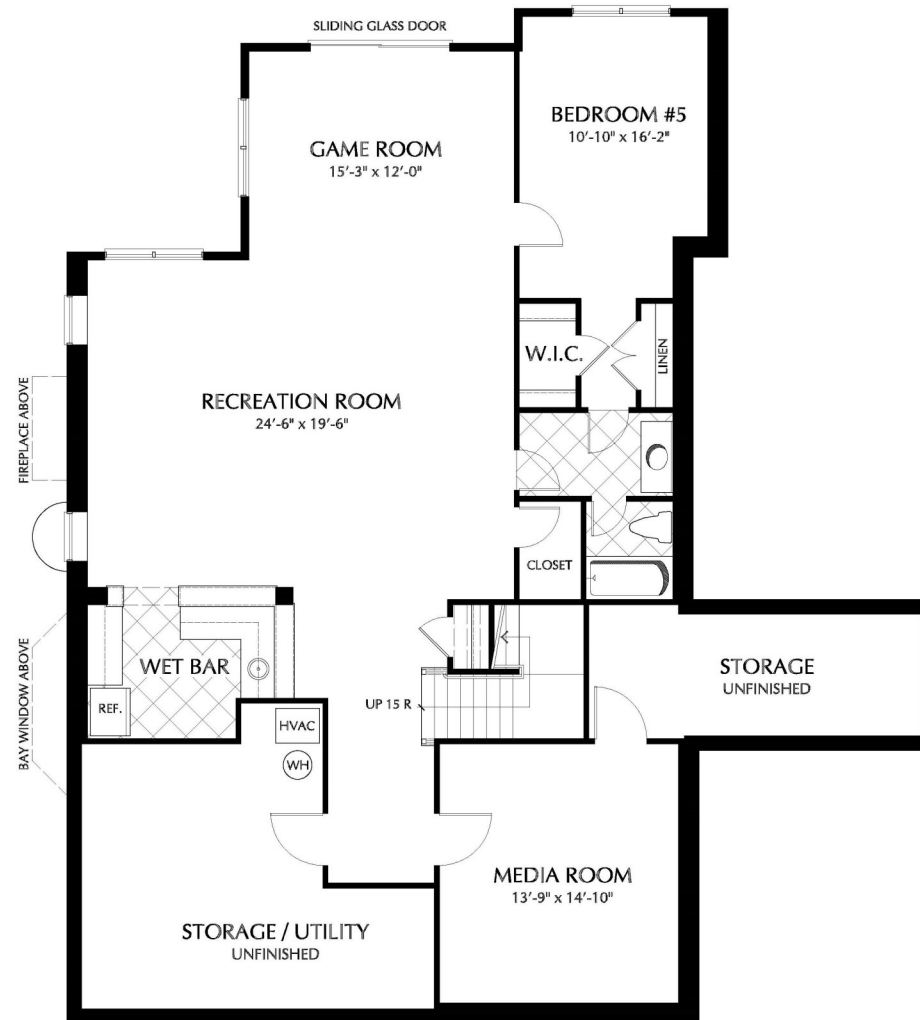
SECOND FLOOR PLAN

2,150 S.F.

All dimensions shown on plans are approximate. Plans and specifications are subject to modification and improvement at any time without notice or obligation. Room dimensions may vary between printed material, website, model homes and individually built homes. The elevations and floor plans are a rendering and accuracy cannot be guaranteed and is not part of a legal contract.



5,764 Finished Square Feet, 5 Bedrooms, 4 Full Baths, 1 Half Baths



### BASEMENT PLAN

1,517 S.F.



All dimensions shown on plans are approximate. Plans and specifications are subject to modification and improvement at any time without notice or obligation. Room dimensions may vary between printed material, website, model homes and individually built homes. The elevations and floor plans are a rendering and accuracy cannot be guaranteed and is not part of a legal contract.

