

S.S. Palmer Elementary School
 Palmerton Borough, Carbon County, PA

Building Code Information:

Applicable Building Code(s):
 PA Uniform Construction Code
 International Existing Building Code / 2018
 ICC/ANSI A117.1 / 2009 & 2010 ADA Standards (ADA)

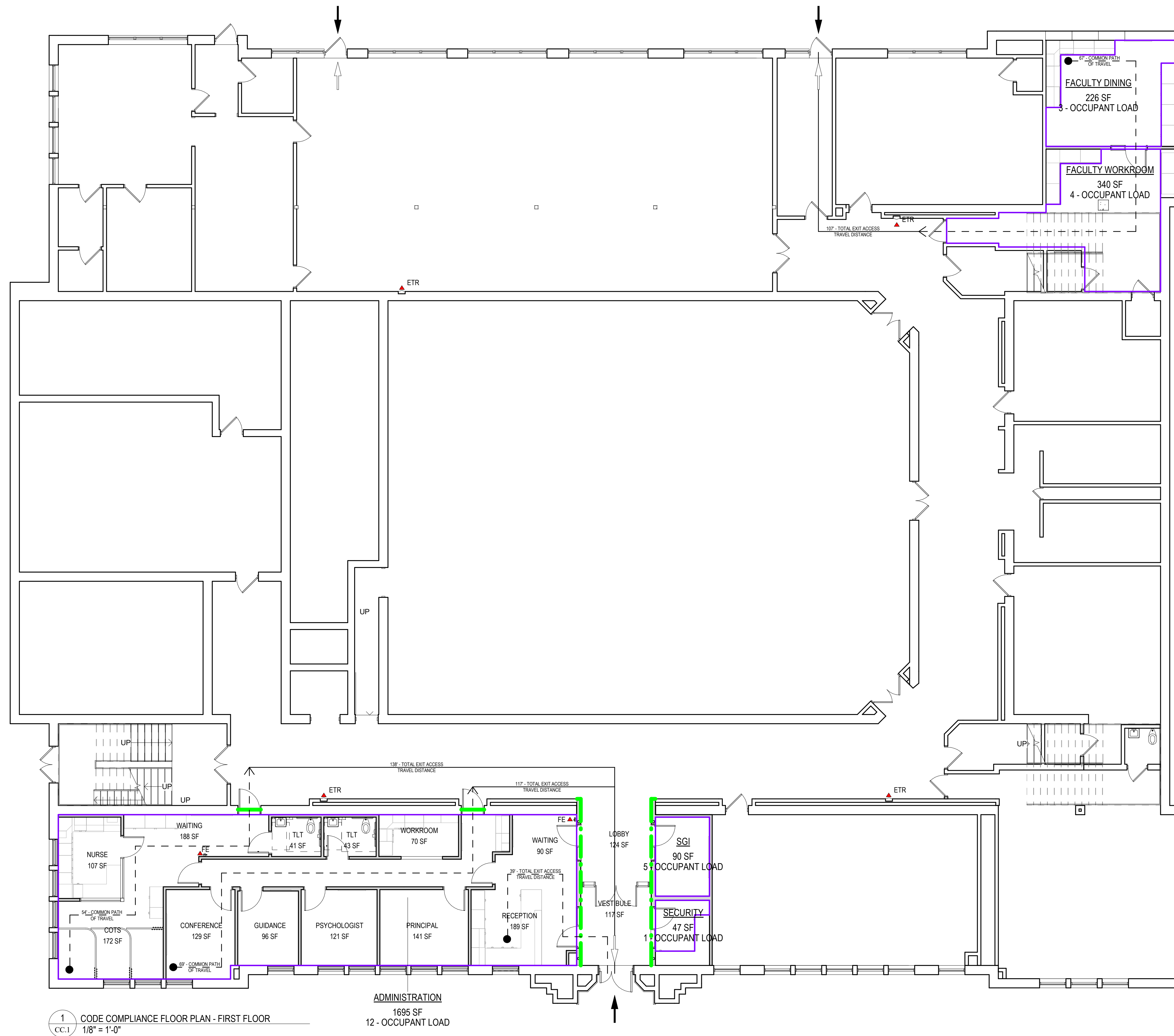
Existing Building:
 Building Construction Classification: Type II B
 Occupancy Classification(s): Group E
 Building Area:
 First Floor: 23,315 square feet
 Second Floor: 22,187 square feet
 Third Floor: 19,168 square feet
 Building Height: 3 Stories

Typical Building Construction – Type II B:
 Exterior Walls:
 Fire Separation Less Than 10 Feet: 1-Hour Rated
 Fire Separation At Least 10 Feet: 0-Hour Rated
 Structural Members Within Exterior Walls: 0-Hour Rated
 Structural Members Outside The Building: 0-Hour Rated
 Floor / Ceiling: 0-Hour Rated Construction
 Roof / Ceiling: 0-Hour Rated Construction
 Corridors Serving > 30 Occupants: 1-Hour Rated Fire Partitions

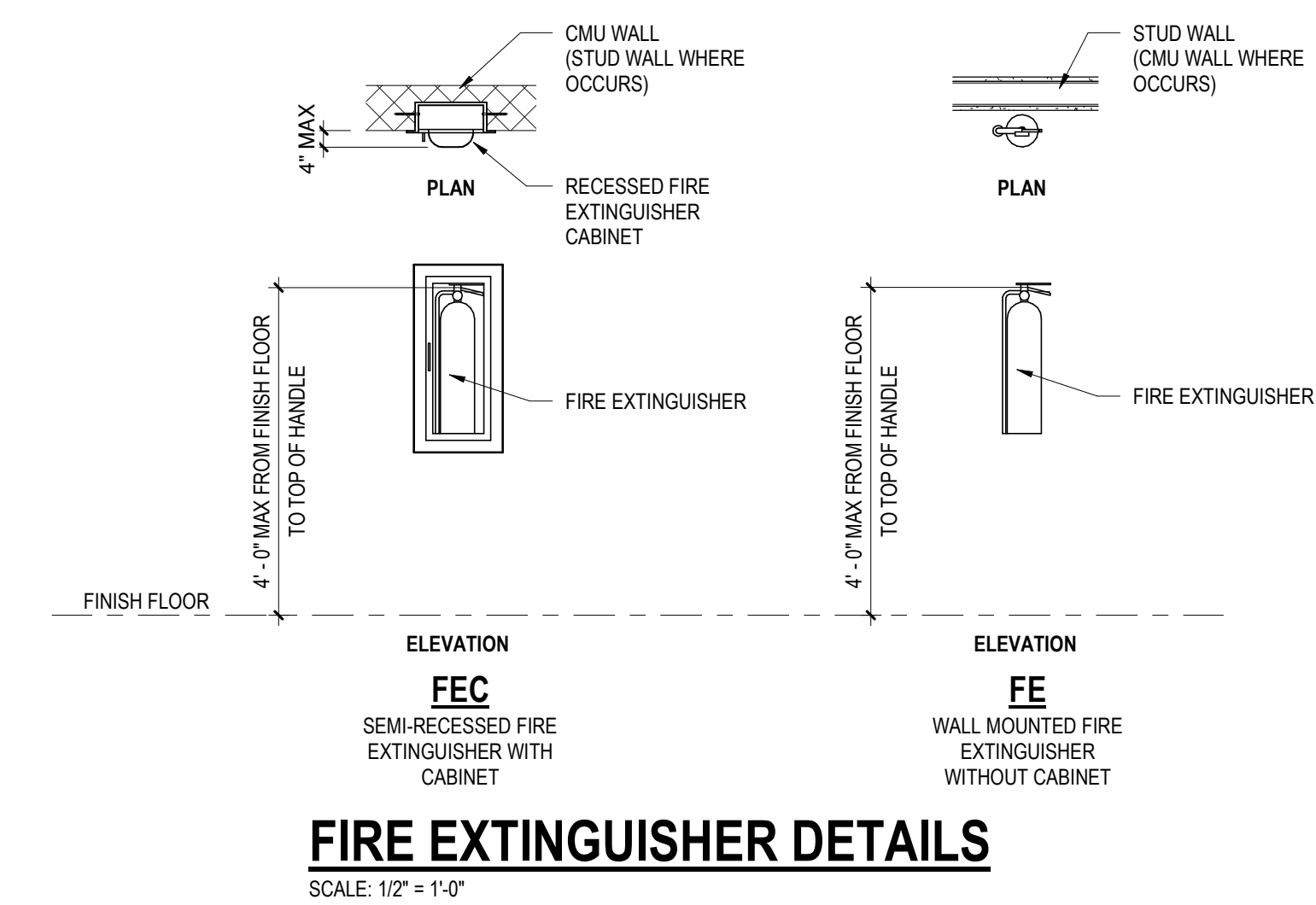
Fire Protection Systems:
 Automatic Sprinklers: N/A
 Standpipe System(s): N/A
 Emergency Ventilation: N/A
 Fire Alarm System: Manual Alarm
 Fire Extinguishers: Per International Fire Code & NFPA-10

Proposed Alterations – Level 2:

Work Areas:
 Ground Floor (Basement): 0 square feet
 First Floor: 2,804 square feet
 Second Floor: 2,402 square feet
 Third Floor: 164 square feet
 Accessible Entrances: Required: Provided:
 First Floor: 1 3
 Second Floor: 1 1 (Via Elevator)
 Accessible Means of Egress: Required: Provided:
 First Floor: 0 3
 Second Floor: 0 0



1 CODE COMPLIANCE FLOOR PLAN - FIRST FLOOR
 1/8" = 1'-0"



FIRE EXTINGUISHER DETAILS
 SCALE: 1/2" = 1'-0"

CODE COMPLIANCE LEGEND

- 1 HOUR RATED FIRE PARTITION
- ➔ ACCESSIBLE ENTRANCE
- ➔ ACCESSIBLE MEANS OF EGRESS
- HE HORIZONTAL EXIT
- ▲ FIRE EXTINGUISHER LOCATIONS

REVISIONS

NO.	DATE	DESCRIPTION OF CHANGES

CRABTREE ROHRBAUGH & ASSOCIATES - ARCHITECTS
 401 EAST WINDING HILL ROAD
 MECHANICSBURG PA 17055
 717-458-0272

TOWSON, MARYLAND
 CHARLOTTEVILLE, VIRGINIA
 WHITE SULPHUR SPRINGS, WEST VIRGINIA

www.cra-architects.com



CODE COMPLIANCE FIRST FLOOR PLAN
 PLOT SCALE: As indicated
 FILENAME:
 DATE: FEBRUARY 9, 2024

PALMERTON AREA SCHOOL DISTRICT
S.S. PALMER ELEMENTARY SCHOOL
 SECURITY VESTIBULE & RENOVATIONS
 298 LAFAYETTE AVENUE
 PALMERTON, PA 18071

PROJECT 3378.1
 CC.1

ALL REPORTS, PLANS, SPECIFICATIONS AND COMPUTER FILES RELATING TO THIS PROJECT ARE THE PROPERTY OF CRABTREE ROHRBAUGH & ASSOCIATES. CRABTREE ROHRBAUGH & ASSOCIATES RESERVES ALL COMMON LAW, STATUTE AND OTHER RESERVED RIGHTS INCLUDING THE COPYRIGHT THEREIN. REPRODUCTION OF THE MATERIAL HEREIN OR SUBSTANTIAL USE WITHOUT WRITTEN PERMISSION OF CRABTREE ROHRBAUGH & ASSOCIATES VIOLATES THE COPYRIGHT LAWS OF THE UNITED STATES AND WILL BE SUBJECT TO LEGAL PROSECUTION.
© CRABTREE ROHRBAUGH & ASSOCIATES, INC. 2018

REVISIONS

NO.	DATE	BY	DESCRIPTION OF CHANGES

CRABTREE ROHRBAUGH & ASSOCIATES - ARCHITECTS
 401 EAST WINDING HILL ROAD
 MECHANICSBURG PA 17055
 717-458-0272

TOWSON, MARYLAND
 CHARLOTTEVILLE, VIRGINIA
 WHITE SULPHUR SPRINGS, WEST VIRGINIA

www.cra-architects.com

PALMERTON AREA SCHOOL DISTRICT
S.S. PALMER ELEMENTARY SCHOOL
 SECURITY VESTIBULE & RENOVATIONS
 298 LAFAYETTE AVENUE
 PALMERTON, PA 18071



CODE COMPLIANCE SECOND FLOOR PLAN

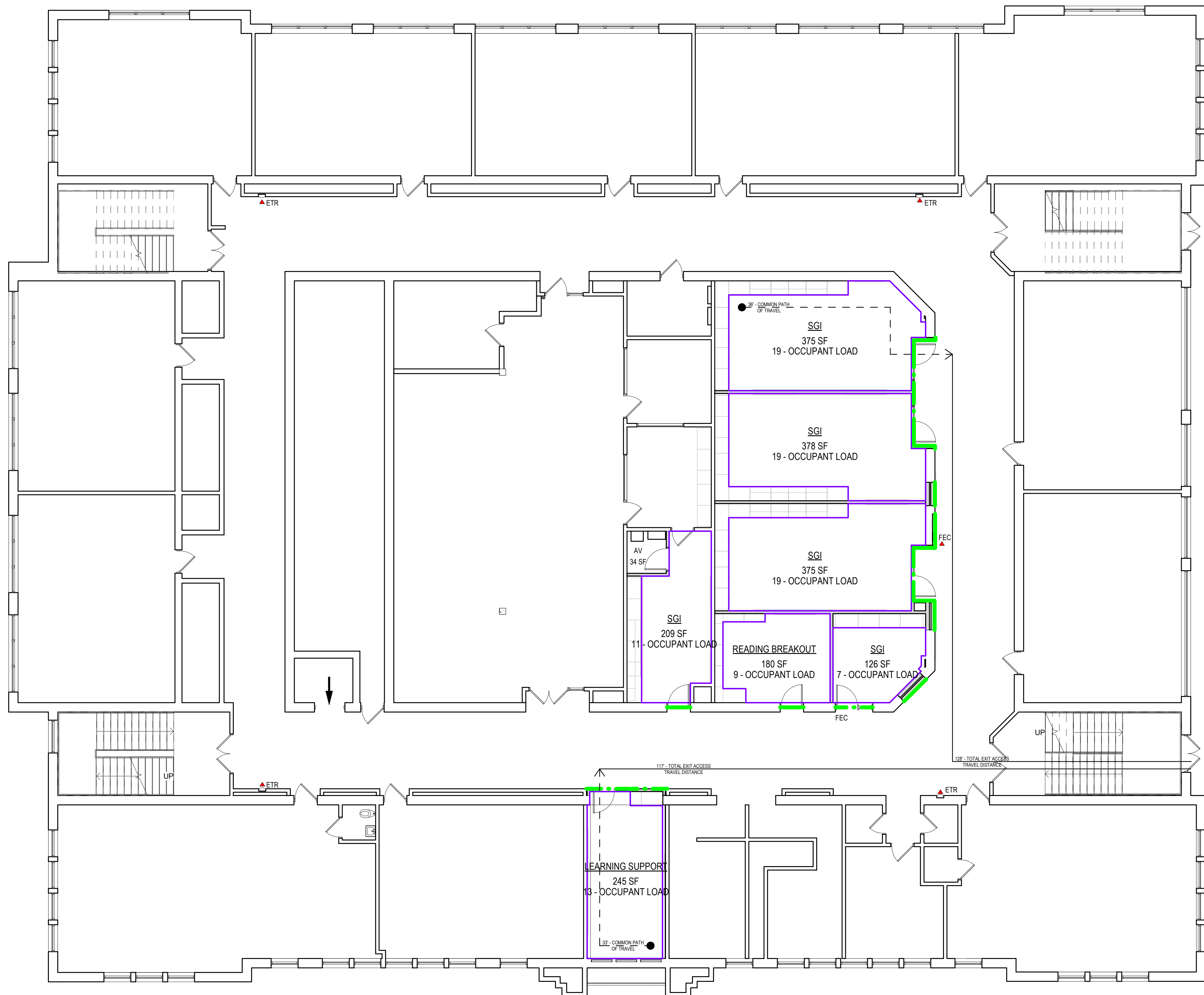
PLOT SCALE: 1/8" = 1'-0"

FILENAME:

DATE: FEBRUARY 9, 2024

PROJECT
3378.1

CC.2



1 CODE COMPLIANCE FLOOR PLAN - SECOND FLOOR
 CC-2 1/8" = 1'-0"

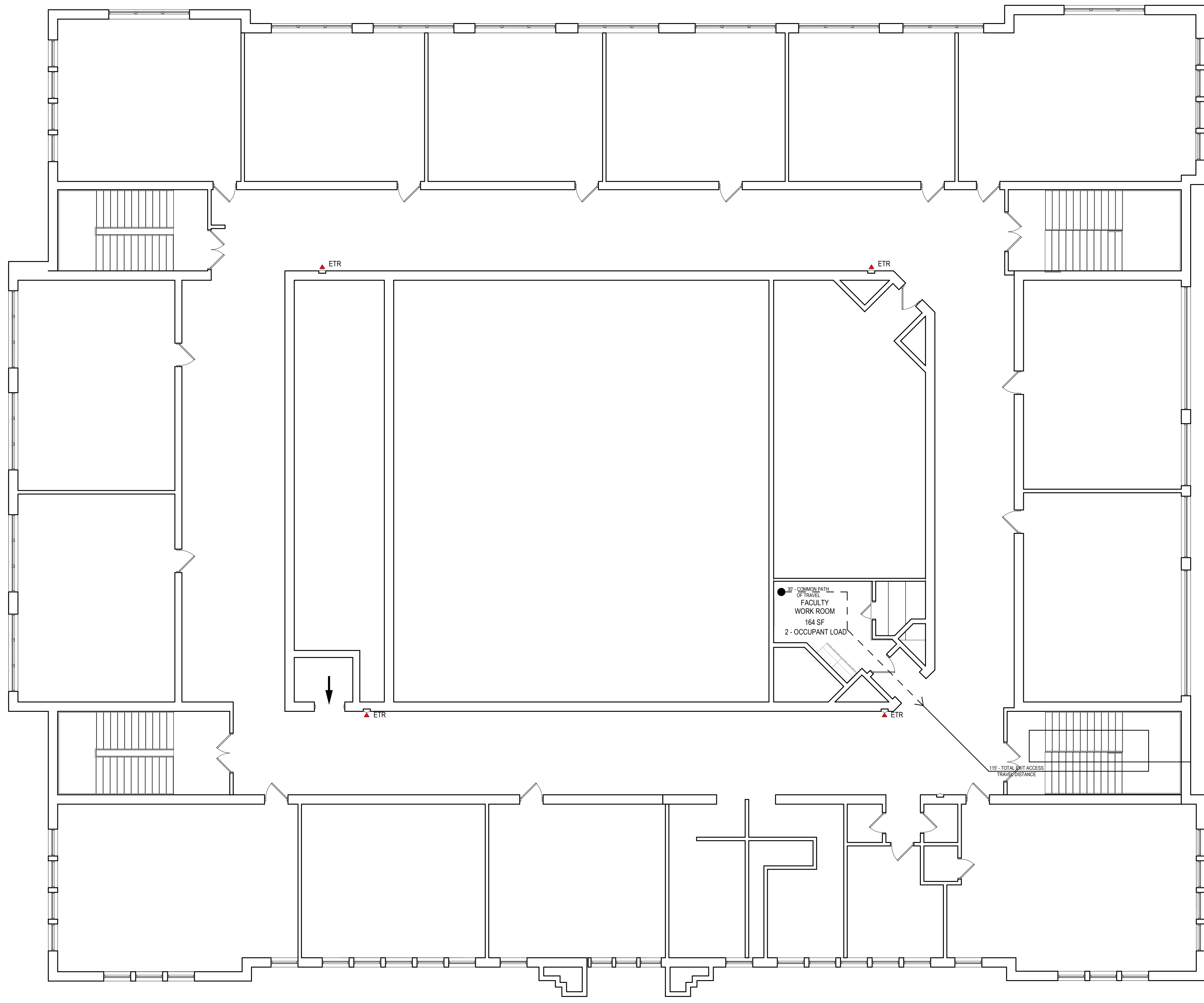
CODE COMPLIANCE LEGEND

- 1 HOUR RATED FIRE PARTITION
- ACCESSIBLE ENTRANCE
- ACCESSIBLE MEANS OF EGRESS
- HORIZONTAL EXIT
- FIRE EXTINGUISHER LOCATIONS

ALL REPORTS, PLANS, SPECIFICATIONS AND COMPUTER FILES RELATING TO THIS PROJECT ARE THE PROPERTY OF CRABTREE ROHRBAUGH & ASSOCIATES. CRABTREE ROHRBAUGH & ASSOCIATES RETAINS ALL COMMON LAW, STATUTE AND OTHER RESERVED RIGHTS INCLUDING THE COPYRIGHT THEREIN. REPRODUCTION OF THE MATERIAL HEREIN OR SUBSTANTIAL USE WITHOUT WRITTEN PERMISSION OF CRABTREE ROHRBAUGH & ASSOCIATES VIOLATES THE COPYRIGHT LAWS OF THE UNITED STATES AND WILL BE SUBJECT TO LEGAL PROSECUTION.
© CRABTREE ROHRBAUGH & ASSOCIATES, INC. 2014

REVISIONS

NO.	MM-DD-YY	NAME	DESCRIPTION OF CHANGES



1 CODE COMPLIANCE FLOOR PLAN - THIRD FLOOR
CC.3 1/8" = 1'-0"

NO MODIFICATIONS TO BE MADE TO THIRD FLOOR

CODE COMPLIANCE LEGEND

	1 HOUR RATED FIRE PARTITION
	ACCESSIBLE ENTRANCE
	ACCESSIBLE MEANS OF EGRESS
	HORIZONTAL EXIT
	FIRE EXTINGUISHER LOCATIONS

CRABTREE ROHRBAUGH & ASSOCIATES - ARCHITECTS
401 EAST WINDING HILL ROAD
MECHANICSBURG PA 17055
717-458-0272
TOWSON, MARYLAND
CHARLOTTEVILLE, VIRGINIA
www.cra-architects.com
WHITE SULPHUR SPRINGS, WEST VIRGINIA



CODE COMPLIANCE THIRD FLOOR PLAN
PLOT SCALE: 1/8" = 1'-0"
FILENAME:
DATE: FEBRUARY 9, 2024

PALMERTON AREA SCHOOL DISTRICT
S.S. PALMER ELEMENTARY SCHOOL
SECURITY VESTIBULE & RENOVATIONS
298 LAFAYETTE AVENUE
PALMERTON, PA 18071

PROJECT 3378.1
CC.3