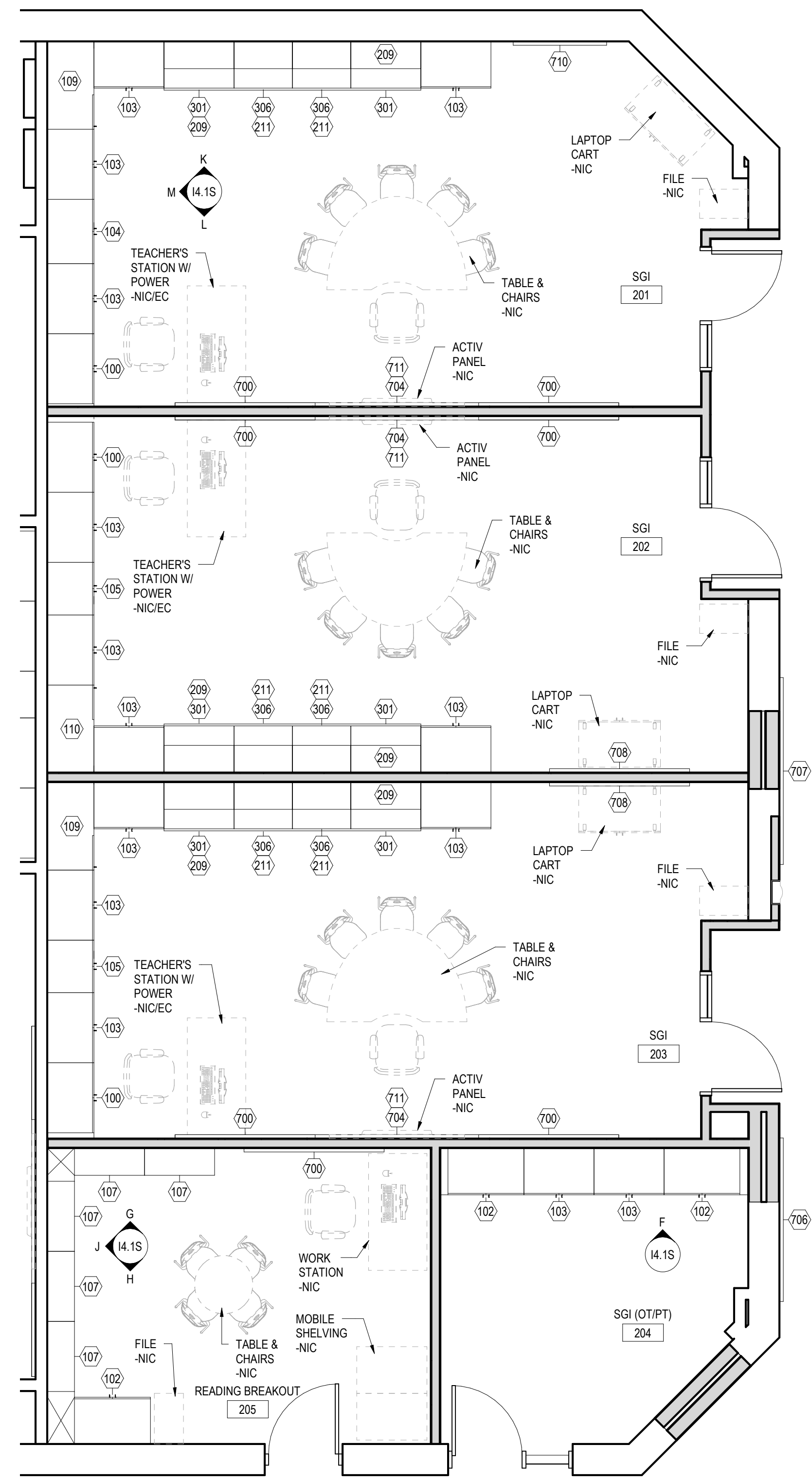
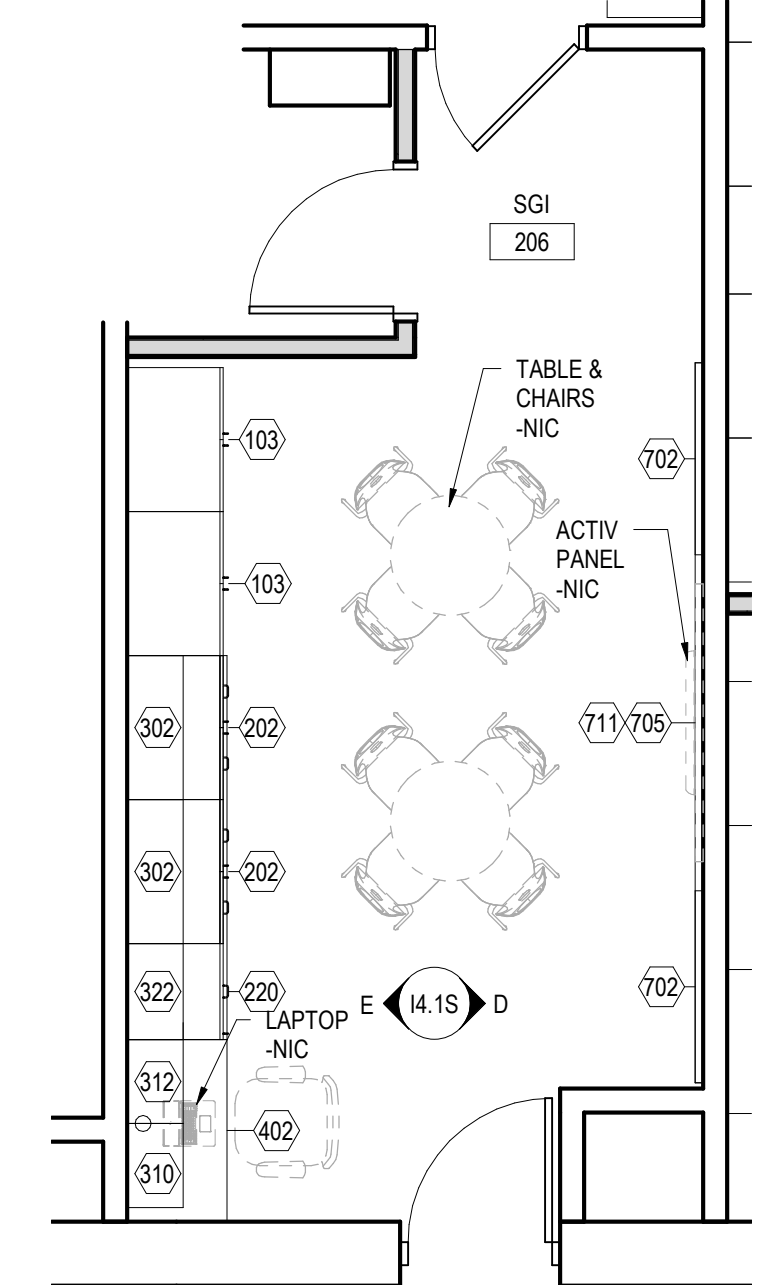


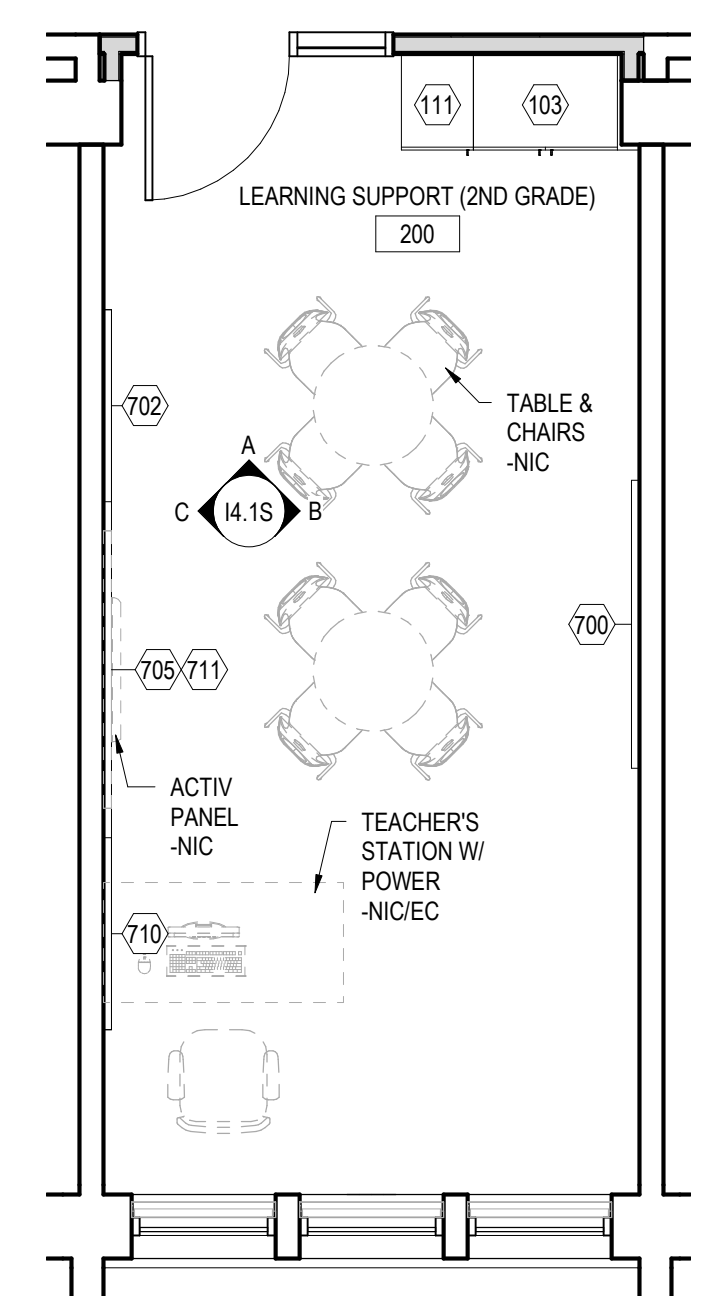
ALL REPORTS, PLANS, SPECIFICATIONS AND COMPUTER FILES RELATING TO THIS PROJECT ARE THE PROPERTY OF CRABTREE ROHRBAUGH & ASSOCIATES. CRABTREE ROHRBAUGH & ASSOCIATES HEREBY DISCLAIMS ALL LIABILITY, STATUTE AND OTHER RESERVED RIGHTS INCLUDING THE COPYRIGHT THEREIN. REPRODUCTION OF THE MATERIAL HEREIN OR SUBSTANTIAL USE WITHOUT WRITTEN PERMISSION OF CRABTREE ROHRBAUGH & ASSOCIATES VIOLATES THE COPYRIGHT LAWS OF THE UNITED STATES AND WILL BE SUBJECT TO LEGAL PROSECUTION. © CRABTREE ROHRBAUGH & ASSOCIATES, INC. 2018



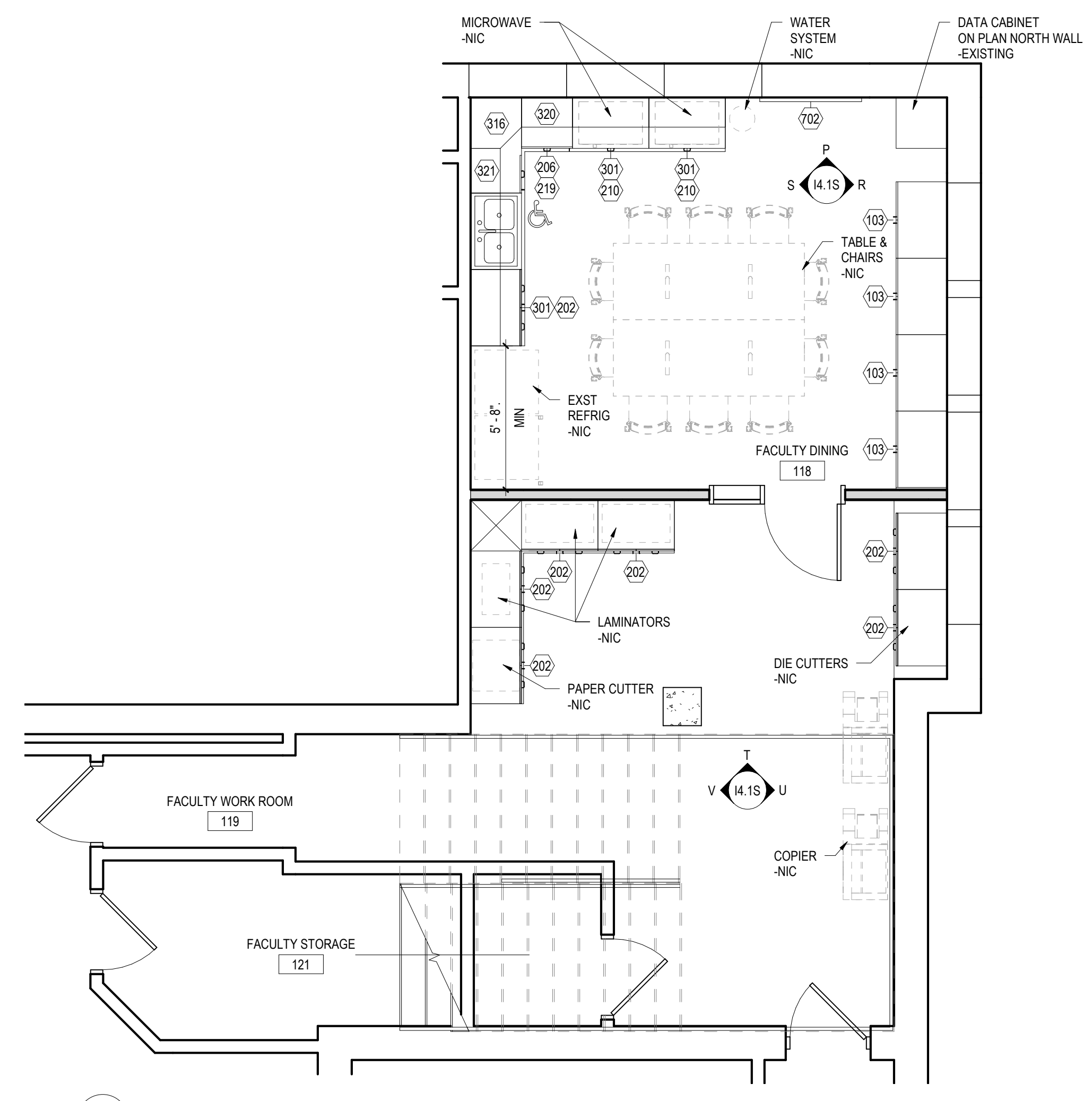
1 SMALL GROUP INSTRUCTION & READING
1/4" = 1'-0"



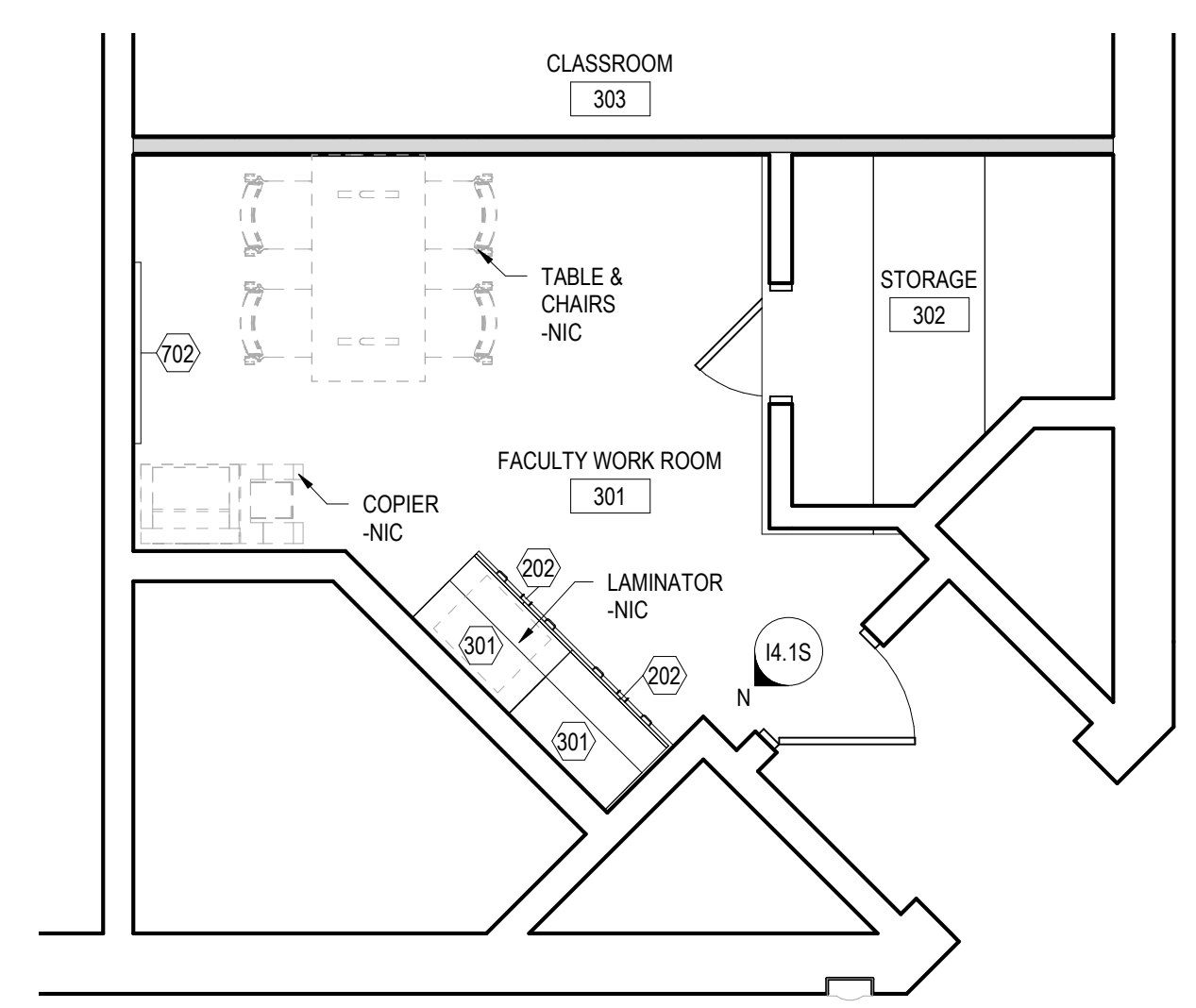
2 206 SMALL GROUP INSTRUCTION
1/4" = 1'-0"



4 200 LEARNING SUPPORT
1/4" = 1'-0"



3 118 & 119 FACULTY DINING & WORK ROOM
1/4" = 1'-0"



5 301 FACULTY WORK ROOM
1/4" = 1'-0"

GRADE 2-6 MOUNTING HEIGHT SCHEDULE	
MARKER BOARD	2'-6" AFF TO BOTTOM EDGE
TACK BOARD	2'-6" AFF TO BOTTOM EDGE
BASE CABINETS	2'-6" AFF TO TOP OF CABINET
WALL CABINETS	7'-0" AFF TO TOP OF CABINET
ACTIV PANEL	2'-6" AFF TO BOTTOM EDGE - VIF W/OWNER PRIOR TO INSTALLATION

ADMINISTRATION MOUNTING HEIGHT SCHEDULE	
MARKER BOARD	3'-0" AFF TO BOTTOM EDGE
TACK BOARD	3'-0" AFF TO BOTTOM EDGE
BASE CABINETS	3'-0" AFF TO TOP OF CABINET
WALL CABINETS	7'-0" AFF TO TOP OF CABINET

ADMINISTRATION MOUNTING HEIGHT SCHEDULE SHALL BE APPLIED TO ALL ROOMS IN THE ADMINISTRATION, GUIDANCE, HEALTH AREAS AND ALL WORK ROOMS.

14.1 - GENERAL CASEWORK AND EQUIPMENT SCHEDULE				
NO	DESCRIPTION	MANUFACTURER	MODEL	DIMENSIONS
100	2-DOOR TEACHER'S WARDROBE - FIXED SHELF, ROD, PIN TRAY & MIRROR. MODIFIED TO INCLUDE LOCK. (3) FILE DRAWERS, & (2) ADJ. SHELVES	CASE SYSTEMS	T2780M	36"W x 24"D x 84"H
102	2-DOOR TALL STORAGE	CASE SYSTEMS	T0100	39"W x 24"D x 84"H
103	2-DOOR TALL STORAGE	CASE SYSTEMS	T0100	36"W x 24"D x 84"H
104	2-DOOR TALL STORAGE	CASE SYSTEMS	T0100	33"W x 24"D x 84"H
105	2-DOOR TALL STORAGE	CASE SYSTEMS	T0100	27"W x 24"D x 84"H
107	OPEN TALL STORAGE	CASE SYSTEMS	T1000	36"W x 14"D x 84"H
109	1-DOOR BLIND TALL STORAGE - LEFT SIDE EXPOSED	CASE SYSTEMS	T0220	45"W x 24"D x 84"H
110	1-DOOR BLIND TALL STORAGE - RIGHT SIDE EXPOSED	CASE SYSTEMS	T0210	45"W x 24"D x 84"H
111	1-DOOR TALL STORAGE - LEFT HINGED	CASE SYSTEMS	T0110	18"W x 24"D x 84"H
200	ADA VANITY SINK BASE CABINET	CASE SYSTEMS	D1000	36"W x 24"D x 34"H
202	2-DOOR/1-DRAWER BASE CABINET	CASE SYSTEMS	B3100	36"W x 24"D x 34"H
206	1-DOOR/1-DRAWER BLIND BASE CABINET - LEFT SIDE EXPOSED	CASE SYSTEMS	B3220	45"W x 24"D x 34"H
209	OPEN BASE CABINET	CASE SYSTEMS	B0000	36"W x 24"D x 30"H
210	OPEN BASE MICROWAVE CABINET MODIFIED TO INCLUDE (1) 9"H DRAWER & OPEN MICROWAVE COMPARTMENT W/MICROWAVE SHELF	CASE SYSTEMS	B4020M	36"W x 24"D x 34"H
211	OPEN BASE CABINET	CASE SYSTEMS	B0000	30"W x 24"D x 30"H
219	1-DOOR/1-DRAWER BASE CABINET - LEFT HINGED	CASE SYSTEMS	B3110	24"W x 24"D x 34"H
220	1-DOOR/1-DRAWER BASE CABINET - RIGHT HINGED	CASE SYSTEMS	B3120	24"W x 24"D x 34"H
301	2-DOOR WALL CABINET	CASE SYSTEMS	W0100	36"W x 14"D x 30"H
302	2-DOOR WALL CABINET	CASE SYSTEMS	W0100	36"W x 14"D x 24"H
303	2-DOOR WALL CABINET	CASE SYSTEMS	W0100	36"W x 14"D x 18"H
306	2-DOOR WALL CABINET	CASE SYSTEMS	W0100	30"W x 14"D x 30"H
310	1-DOOR WALL CABINET - LEFT HINGED	CASE SYSTEMS	W0110	21"W x 14"D x 24"H
312	1-DOOR WALL CABINET - RIGHT HINGED	CASE SYSTEMS	W0120	21"W x 14"D x 24"H
316	1-DOOR CORNER WALL CABINET - LEFT HINGED	CASE SYSTEMS	Y1210	24"W x 24"D x 30"H
320	1-DOOR WALL CABINET - LEFT HINGED	CASE SYSTEMS	W0110	24"W x 14"D x 30"H
321	1-DOOR WALL CABINET - RIGHT HINGED	CASE SYSTEMS	W0120	21"W x 14"D x 30"H
322	1-DOOR WALL CABINET - RIGHT HINGED	CASE SYSTEMS	W0120	24"W x 14"D x 24"H
402	BUILT-IN PLASTIC LAMINATE COUNTERTOP WITH ANGLED SUPPORTS AND (1) GROMMET AS REQUIRED	CASE SYSTEMS	X0650, GR600	WIDTH TO FIT x 25"D x 30"H
700	MARKERBOARD	SEE SPECIFICATIONS	SEE SPECIFICATIONS	6'-0"W x 4'-0"H
702	MARKERBOARD	SEE SPECIFICATIONS	SEE SPECIFICATIONS	4'-0"W x 4'-0"H
704	TACK BOARD	SEE SPECIFICATIONS	SEE SPECIFICATIONS	19'-0"W x 1'-0"H
705	TACK BOARD	SEE SPECIFICATIONS	SEE SPECIFICATIONS	15'-0"W x 1'-0"H
706	FRAMELESS TACK BOARD W/XOREL FABRIC	SEE SPECIFICATIONS	SEE SPECIFICATIONS	8'-0"W x 4'-0"H
707	FRAMELESS TACK BOARD W/XOREL FABRIC	SEE SPECIFICATIONS	SEE SPECIFICATIONS	8'-0"W x 4'-0"H
708	TACK BOARD	SEE SPECIFICATIONS	SEE SPECIFICATIONS	6'-0"W x 4'-0"H
710	TACK BOARD	SEE SPECIFICATIONS	SEE SPECIFICATIONS	4'-0"W x 4'-0"H
711	TACK STRIP	SEE SPECIFICATIONS	SEE SPECIFICATIONS	WIDTH TO FIT x 2"H

GENERAL NOTES TO APPLY TO ALL 14 DRAWINGS

- MOUNTING HEIGHT SCHEDULE IS APPLICABLE TO MOST ROOMS. IN INSTANCE WHERE NOTE/DETAILS ON DRAWINGS DO NOT COINCIDE WITH THE SCHEDULE. THE DRAWINGS TAKE PRECEDENCE.
- ALL BASE CABINETS SHALL RECEIVE A CONTINUOUS 1-1/4" THICK LAMINATE COUNTERTOP WITH A 4" BACKSPLASH UNLESS NOTED OTHERWISE. THE DEPTH OF THE COUNTERTOP SHALL EXTEND 3/4" PAST THE DEPTH OF THE BASE CABINET.
- COUNTERTOPS THAT RETURN INTO A WALL(S) SHALL RECEIVE BACKSPLASH THAT WRAPS CORNER ALONG WALL(S).
- PROVIDE CHAMFERED EDGE CORNER FOR ALL COUNTERTOPS ADJACENT TO ALL TALL STORAGE UNITS.
- WHERE COLUMNS, WINDOWS OR OTHER BUILDING COMPONENTS CONFLICT WITH CASEWORK DIMENSIONAL REQUIREMENTS. FIELD VERIFY DIMENSIONS AND PROVIDE CUSTOM UNIT TO ALLOW PROPER FITTING.
- ALL EXPOSED ENDS OF CASEWORK SHALL RECEIVE FINISHED END PANELS.
- LAMINATE COLOR FOR INTERIOR OF OPEN CABINETS SHALL MATCH EXTERIOR LAMINATE COLOR.
- STAINLESS STEEL SINKS, FAUCETS, AND BUBBLERS SHALL BE PROVIDED AND INSTALLED BY PLUMBING CONTRACTOR.
- ALL VISUAL DISPLAY AREAS (MARKER BOARDS AND/OR TACK BOARDS) 10'-0"W OR LONGER SHALL RECEIVE 2" MAP RAIL THAT SPANS FROM VERTICAL EDGE TO VERTICAL EDGE.
- PROVIDE WOOD BLOCKING IN METAL STUD WALLS, PER MANUFACTURER'S RECOMMENDATIONS. TO RECEIVE THE TELEVISION WALL BRACKET.
- IN ROOMS RECEIVING RESILIENT BASE, ADHERE TO ALL WALLS, BASE CABINET TOE KICKS, AND EXPOSED END PANELS. REFER TO SPECIFICATIONS FOR LOCATION OF 4" AND 6" BASE.
- SEE REFLECTED CEILING PLANS FOR LOCATION OF WINDOW TREATMENTS.
- TELEPHONE UNITS AND SYSTEMS ARE NOT IN CONTRACT.
- COORDINATE ALL LARGE SCALE PLANS WITH MECHANICAL, ELECTRICAL AND PLUMBING DRAWINGS.
- NIC = NOT IN CONTRACT
- WHEN DESCRIPTION AND MODEL NUMBER IN CASEWORK AND EQUIPMENT SCHEDULE CONFLICT, THE DESCRIPTION TAKES PRECEDENCE.
- OPP = OPPOSITE HAND.

REVISIONS		
NO	DATE	DESCRIPTION OF CHANGES

CRABTREE ROHRBAUGH & ASSOCIATES - ARCHITECTS
 401 EAST WINDING HILL ROAD
 MECHANICSBURG PA 17055
 717-458-0272

TOWSON, MARYLAND
 CHARLOTTEVILLE, VIRGINIA
 WHITE SULPHUR SPRINGS, WEST VIRGINIA

PALMERTON AREA SCHOOL DISTRICT
S.S. PALMER ELEMENTARY SCHOOL
 SECURITY VESTIBULE & RENOVATIONS
 298 LAFAYETTE AVENUE
 PALMERTON, PA 18071

PROJECT
 3378.1

14.1

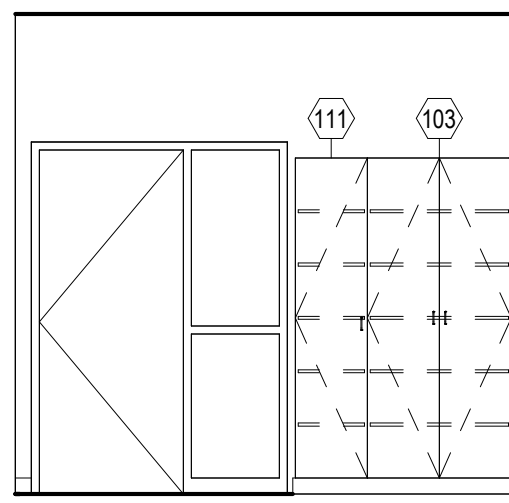
DATE: FEBRUARY 9, 2024

LARGE SCALE LAYOUTS
 SMALL GROUP INSTRUCTION
 & MISCELLANEOUS

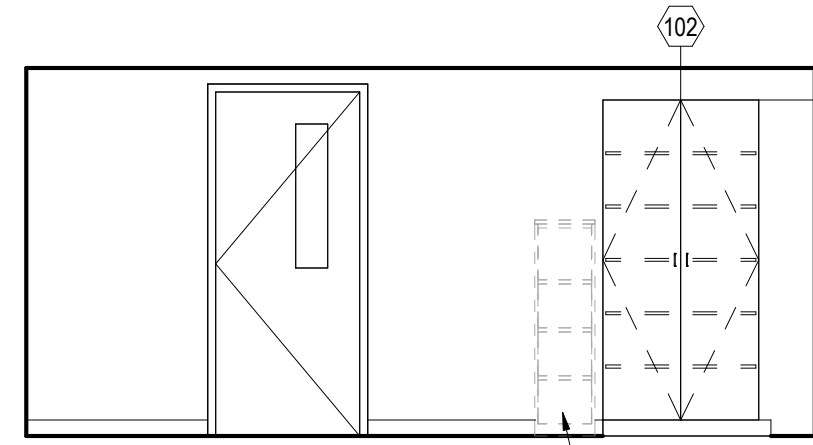
PLT SCALE:
 1/4" = 1'-0"

FILENAME:

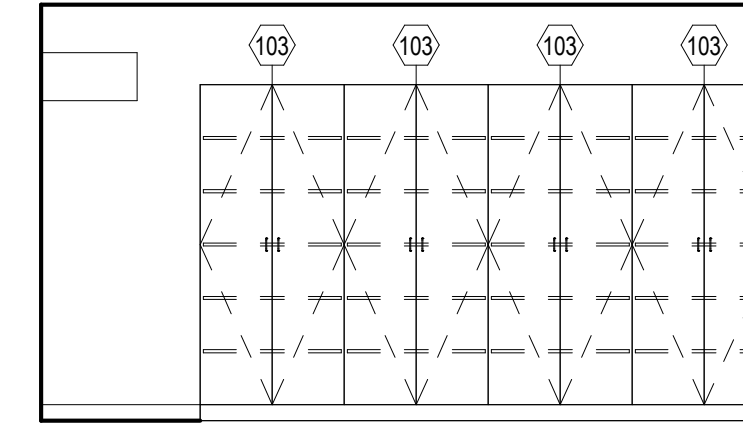
DATE:
 FEBRUARY 9, 2024



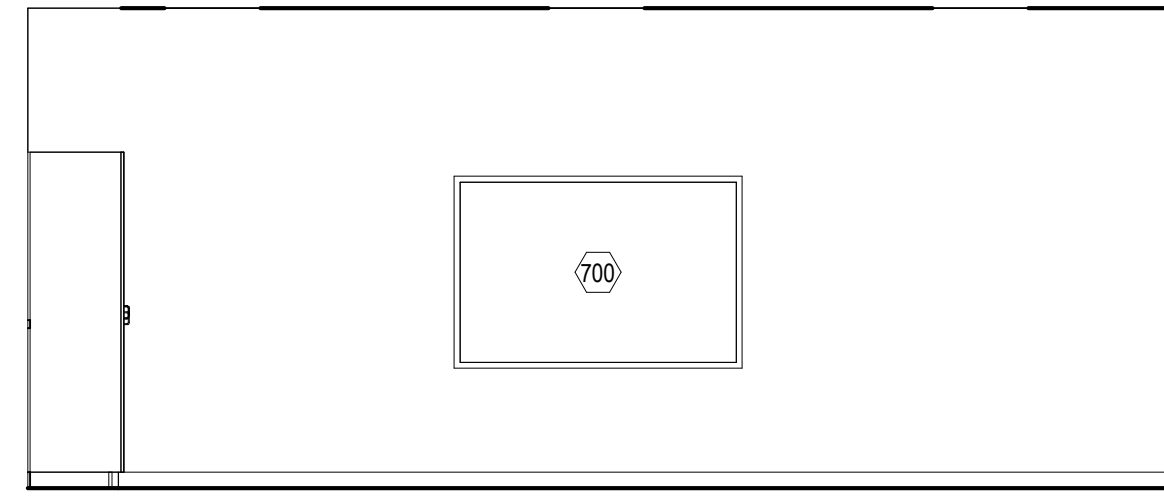
A INTERIOR ELEVATION A
14.1S 1/4" = 1'-0"



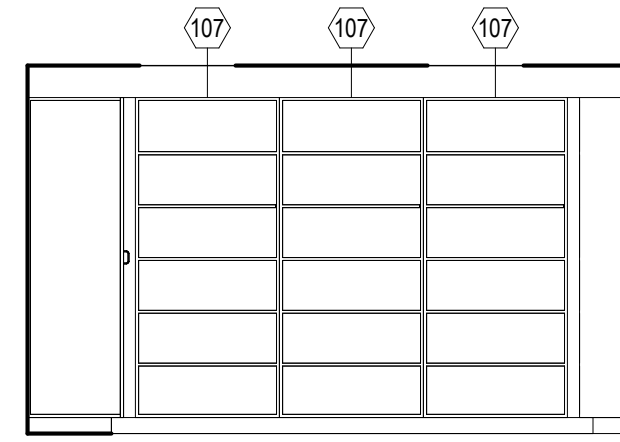
H INTERIOR ELEVATION H
14.1S 1/4" = 1'-0"



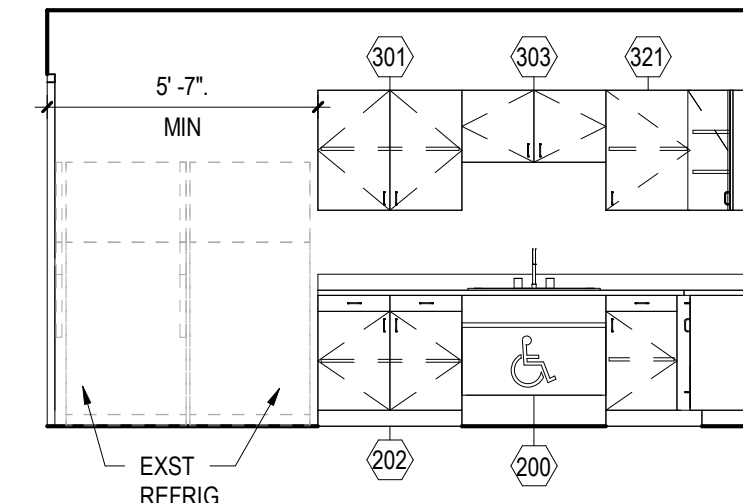
R INTERIOR ELEVATION R
14.1S 1/4" = 1'-0"



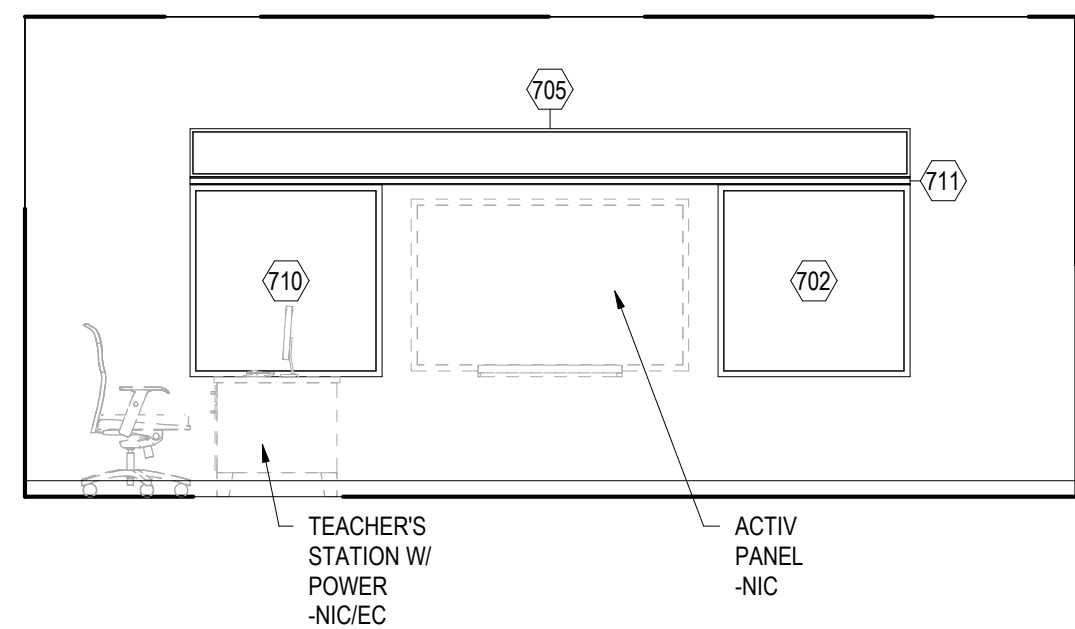
B INTERIOR ELEVATION B
14.1S 1/4" = 1'-0"



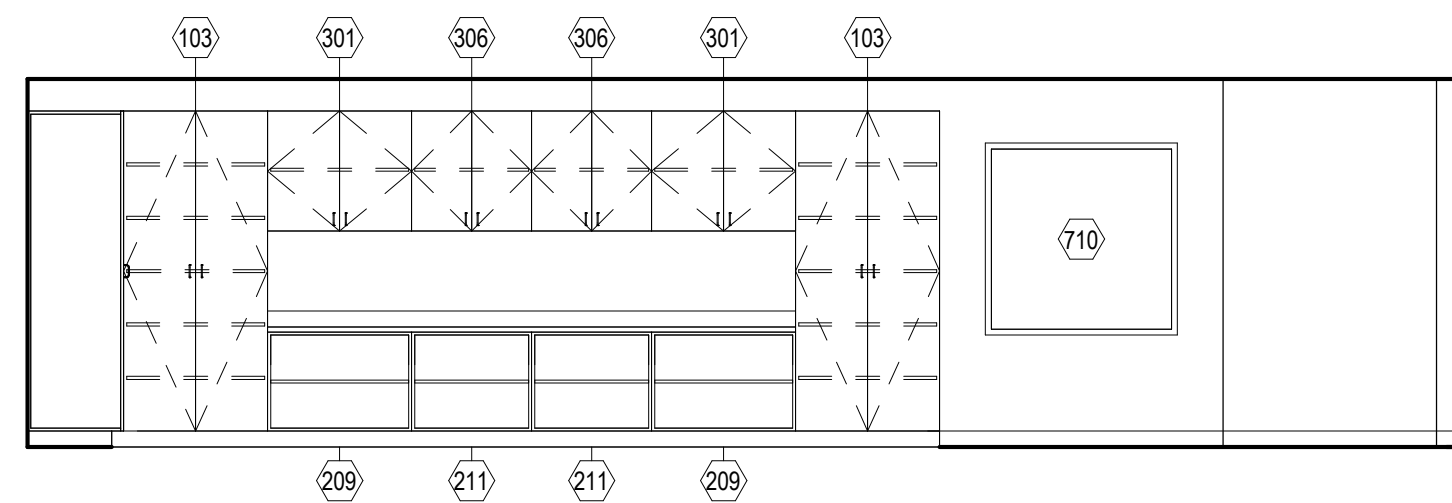
J INTERIOR ELEVATION J
14.1S 1/4" = 1'-0"



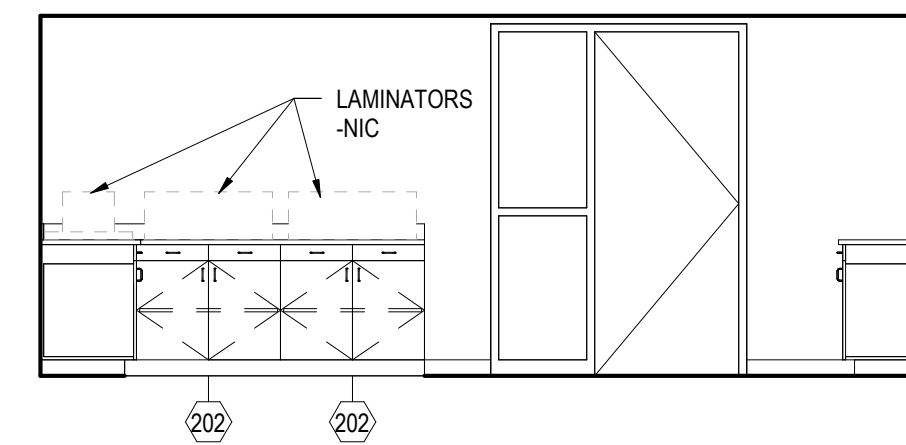
S INTERIOR ELEVATION S
14.1S 1/4" = 1'-0"



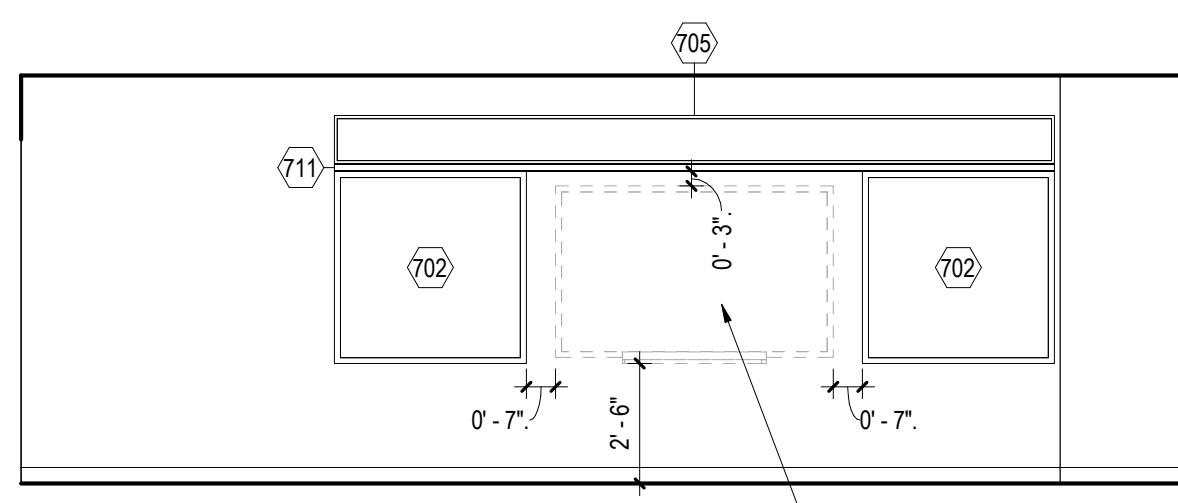
C INTERIOR ELEVATION C
14.1S 1/4" = 1'-0"



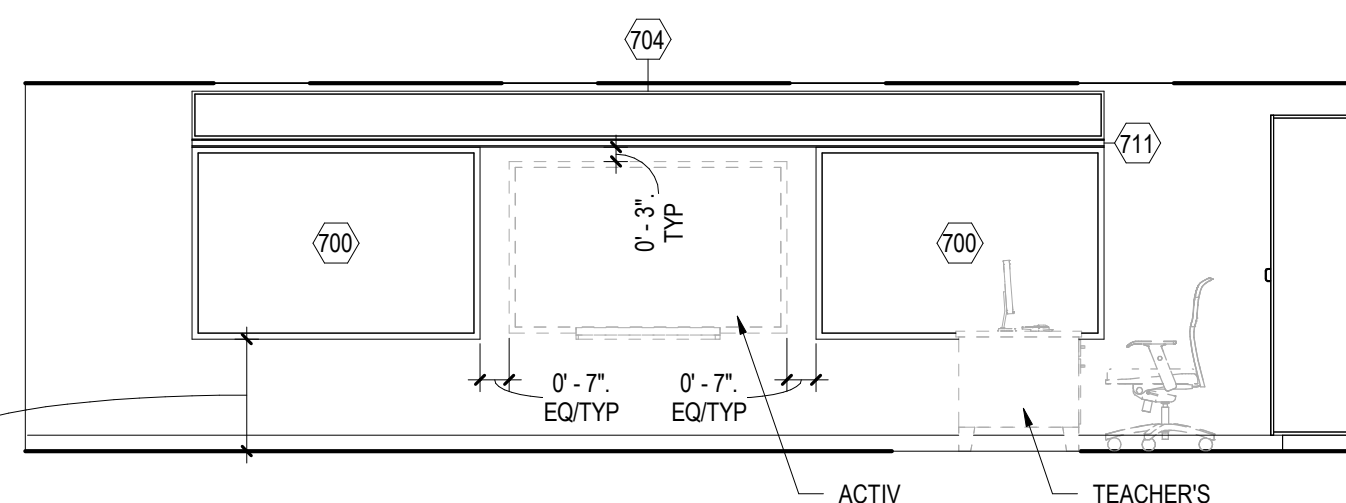
K INTERIOR ELEVATION K
14.1S 1/4" = 1'-0"



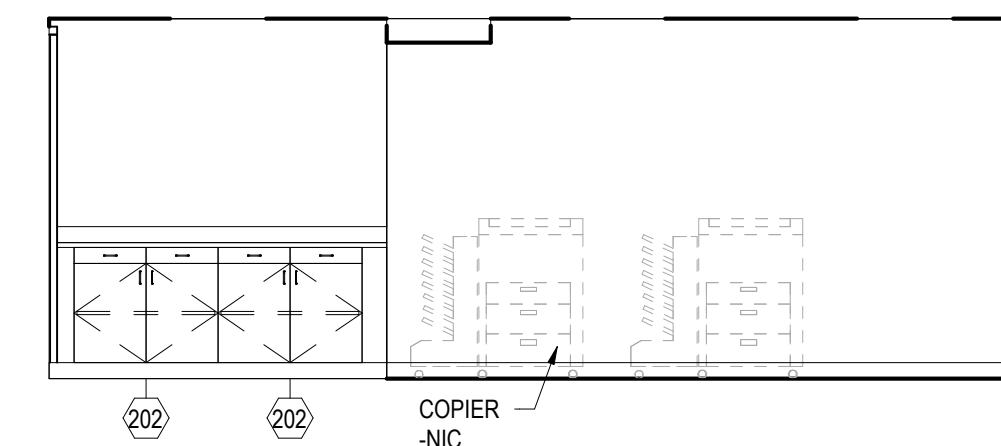
T INTERIOR ELEVATION T
14.1S 1/4" = 1'-0"



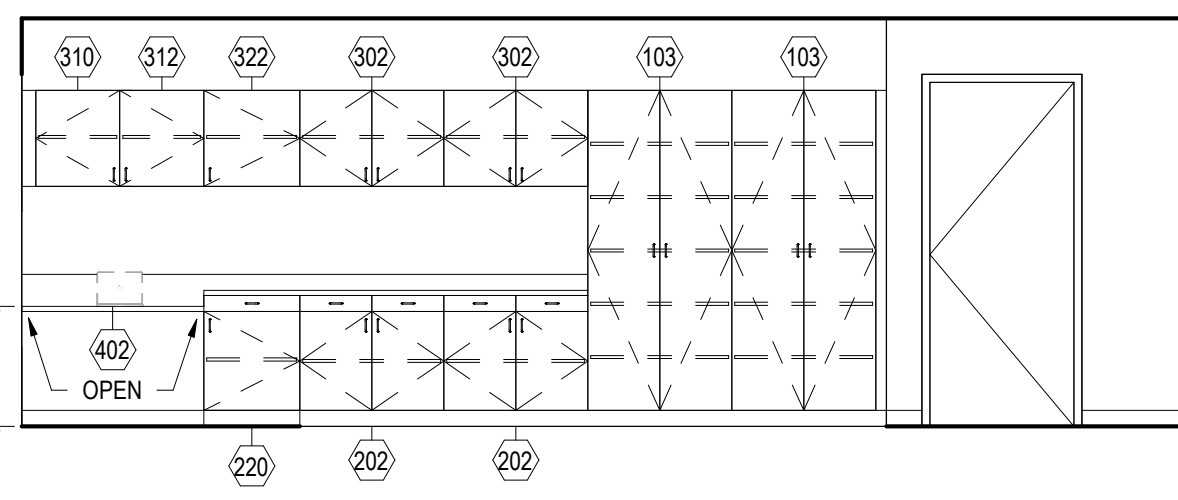
D INTERIOR ELEVATION D
14.1S 1/4" = 1'-0"



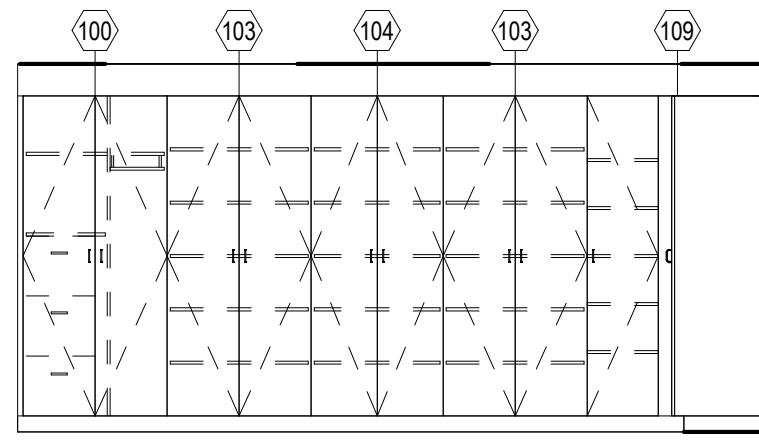
L INTERIOR ELEVATION L
14.1S 1/4" = 1'-0"



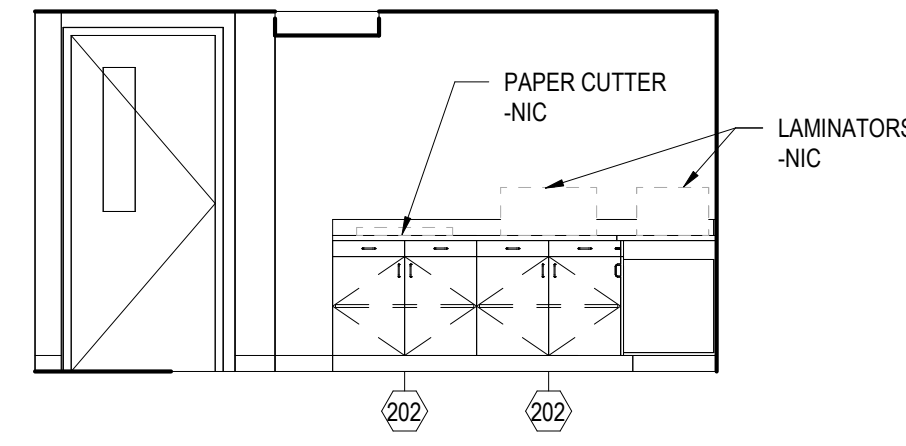
U INTERIOR ELEVATION U
14.1S 1/4" = 1'-0"



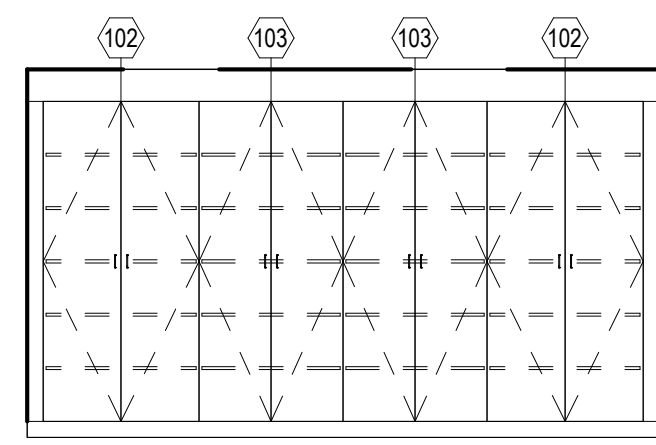
E INTERIOR ELEVATION E
14.1S 1/4" = 1'-0"



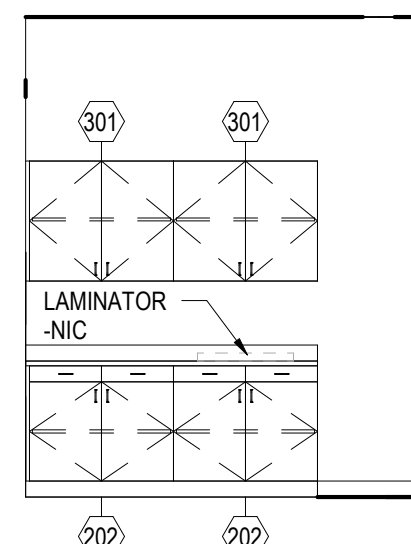
M INTERIOR ELEVATION M
14.1S 1/4" = 1'-0"



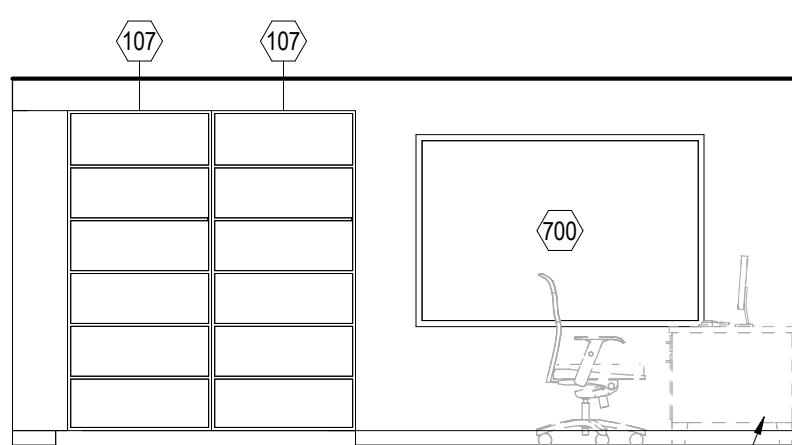
V INTERIOR ELEVATION V
14.1S 1/4" = 1'-0"



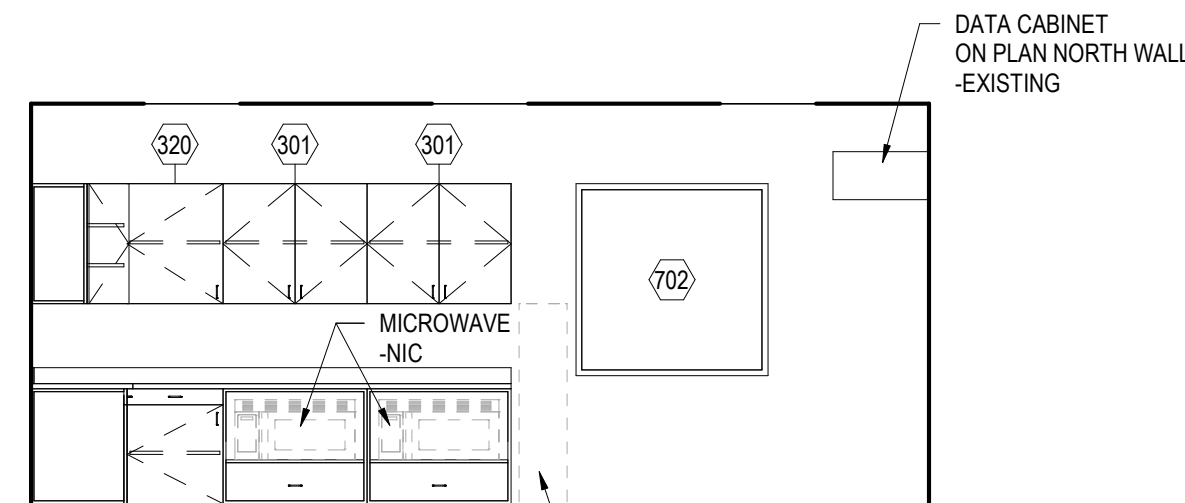
F INTERIOR ELEVATION F
14.1S 1/4" = 1'-0"



N INTERIOR ELEVATION P
14.1S 1/4" = 1'-0"



G INTERIOR ELEVATION G
14.1S 1/4" = 1'-0"



P INTERIOR ELEVATION P
14.1S 1/4" = 1'-0"

ALL REPORTS, PLANS, SPECIFICATIONS AND COMPUTER FILES RELATING TO THIS PROJECT ARE THE PROPERTY OF CRABTREE ROHRBAUGH & ASSOCIATES. CRABTREE ROHRBAUGH & ASSOCIATES RETAINS ALL COMMON LAW, STATUTE AND OTHER RESERVED RIGHTS INCLUDING THE COPYRIGHT THEREIN. REPRODUCTION OF THE MATERIAL HEREIN OR SUBSTANTIAL USE WITHOUT WRITTEN PERMISSION OF CRABTREE ROHRBAUGH & ASSOCIATES VIOLATES THE COPYRIGHT LAWS OF THE UNITED STATES AND WILL BE SUBJECT TO LEGAL PROSECUTION.
© CRABTREE ROHRBAUGH & ASSOCIATES, INC 2014

REVISIONS

NO.	DATE	BY	DESCRIPTION OF CHANGES

CRABTREE ROHRBAUGH & ASSOCIATES - ARCHITECTS
 401 EAST WINDING HILL ROAD
 MECHANICSBURG PA 17055
 717-458-0272

www.cra-architects.com
 TOWSON, MARYLAND
 CHARLOTTEVILLE, VIRGINIA
 WHITE SULPHUR SPRINGS, WEST VIRGINIA

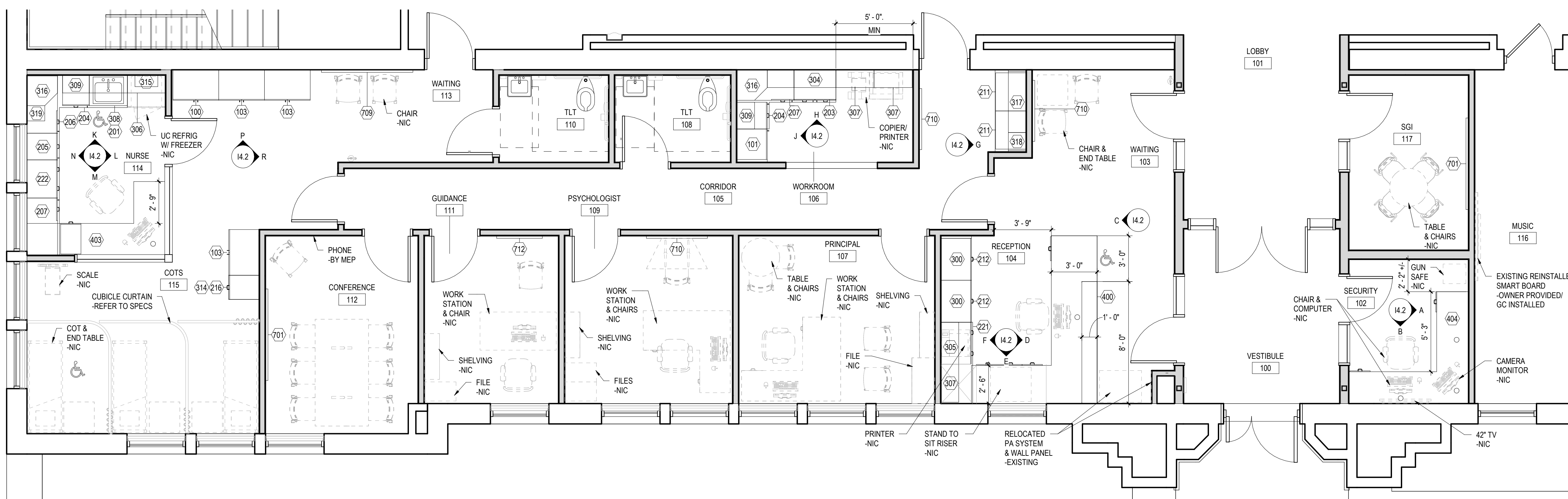
PALMERTON AREA SCHOOL DISTRICT
S.S. PALMER ELEMENTARY SCHOOL
 SECURITY VESTIBULE & RENOVATIONS
 298 LAFAYETTE AVENUE
 PALMERTON, PA 18071



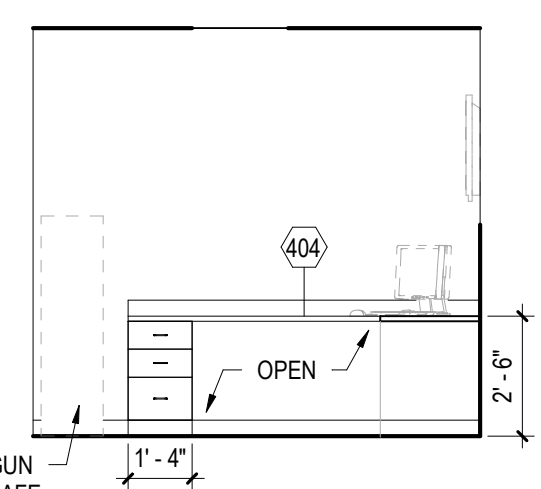
LARGE SCALE LAYOUTS
 SMALL GROUP INSTRUCTION & MISCELLANEOUS ELEVATIONS
 PLOT SCALE: 1/4" = 1'-0"
 FILENAME:
 DATE: FEBRUARY 9, 2024

PROJECT
 3378.1
I4.1S

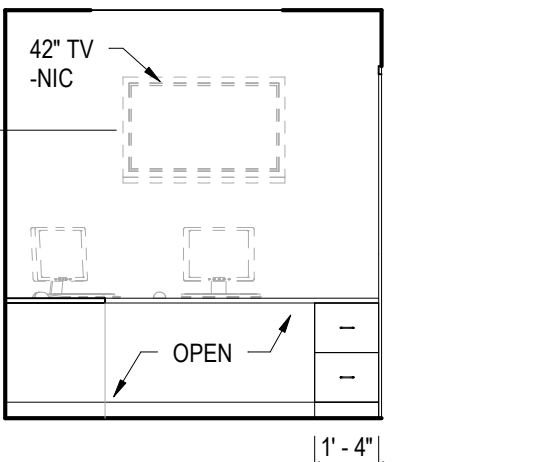
ALL REPORTS, PLANS, SPECIFICATIONS AND COMPUTER FILES RELATING TO THIS PROJECT ARE THE PROPERTY OF CRABTREE ROHRBAUGH & ASSOCIATES. CRABTREE ROHRBAUGH & ASSOCIATES REAFFIRMS ALL COMMON LAW, STATUTE AND OTHER RESERVED RIGHTS INCLUDING THE COPYRIGHT THEREIN. REPRODUCTION OF ANY PART OF THESE MATERIALS WITHOUT WRITTEN PERMISSION OF CRABTREE ROHRBAUGH & ASSOCIATES VIOLATES THE COPYRIGHT LAWS OF THE UNITED STATES AND WILL BE SUBJECT TO LEGAL PROSECUTION.
© CRABTREE ROHRBAUGH & ASSOCIATES, INC. 2014



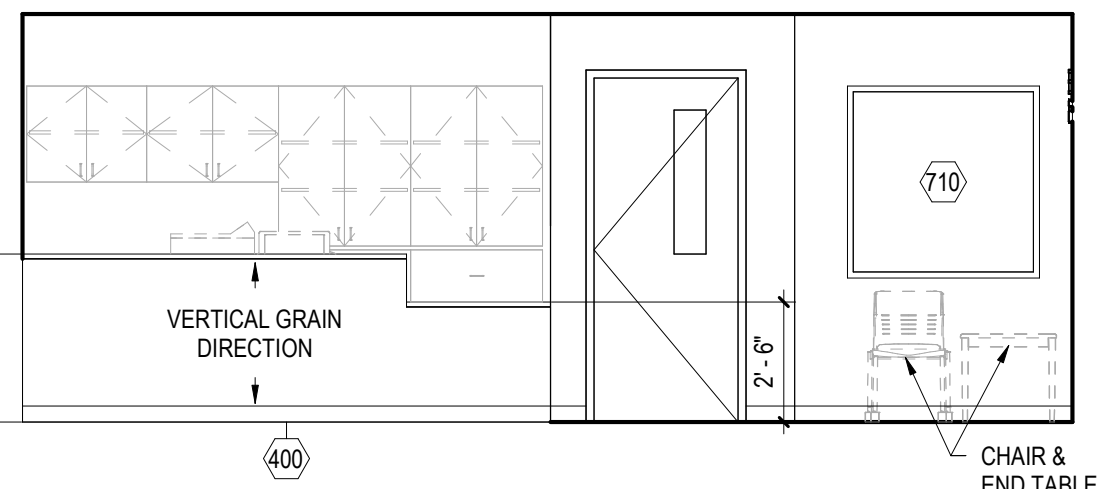
1 ADMINISTRATION, GUIDANCE & NURSE
1/4" = 1'-0"



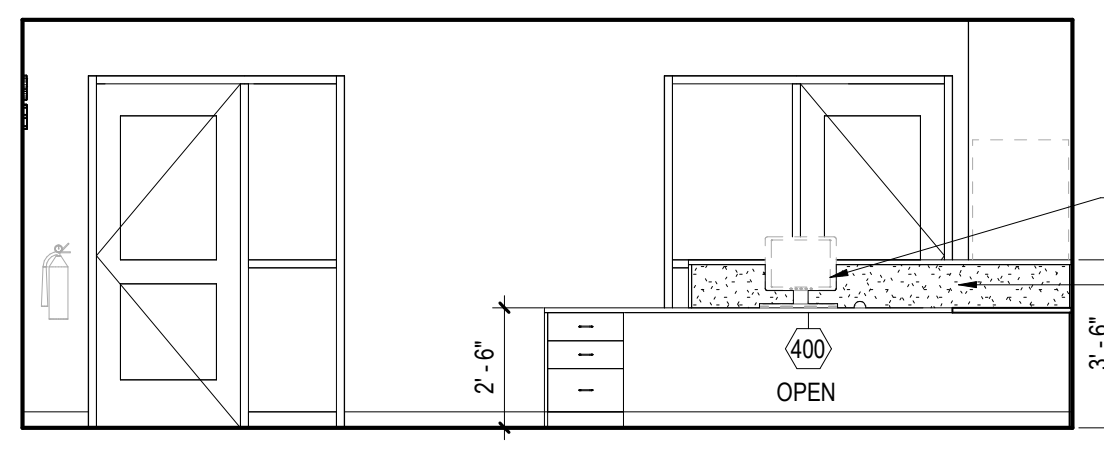
A INTERIOR ELEVATION A
1/4" = 1'-0"



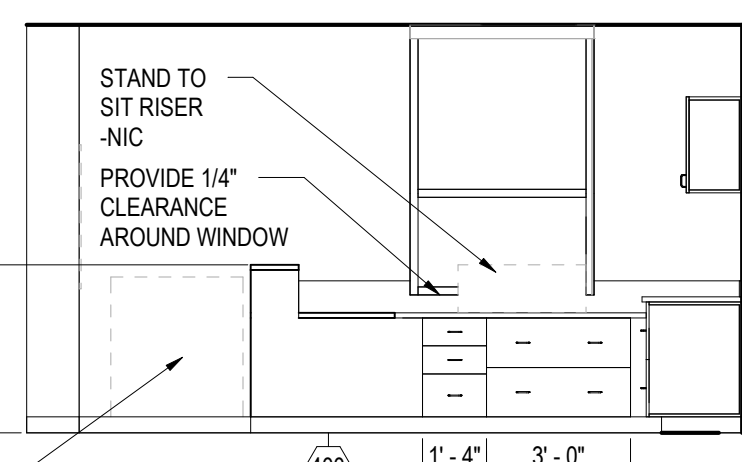
B INTERIOR ELEVATION B
1/4" = 1'-0"



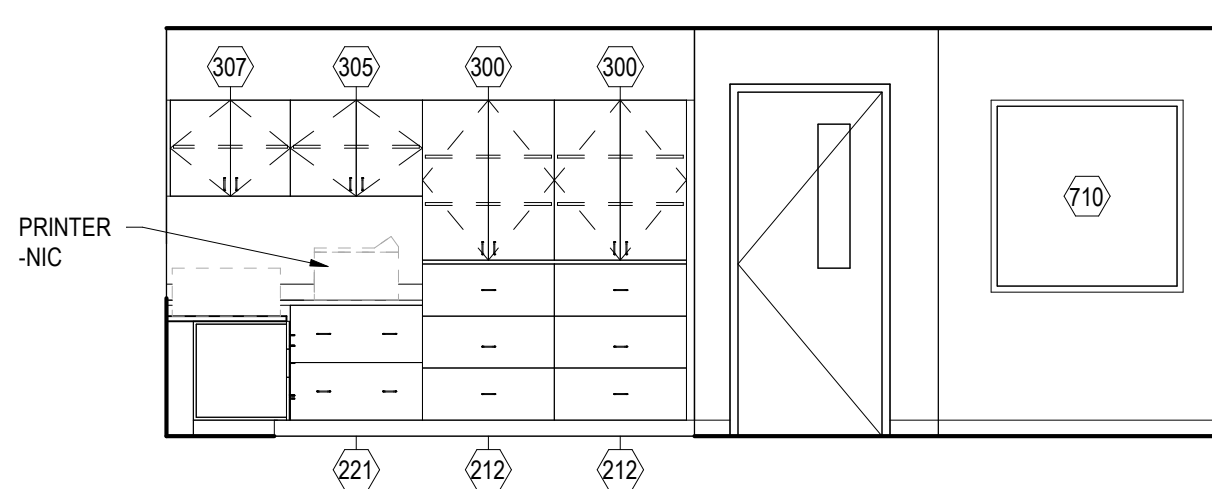
C INTERIOR ELEVATION C
1/4" = 1'-0"



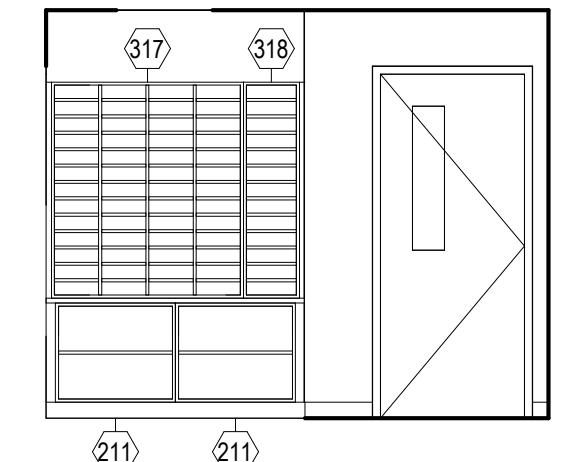
D INTERIOR ELEVATION D
1/4" = 1'-0"



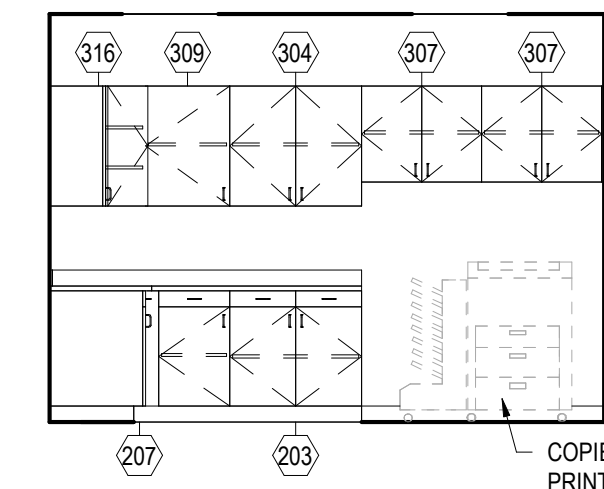
E INTERIOR ELEVATION E
1/4" = 1'-0"



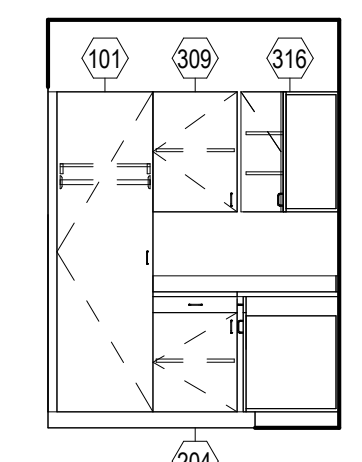
F INTERIOR ELEVATION F
1/4" = 1'-0"



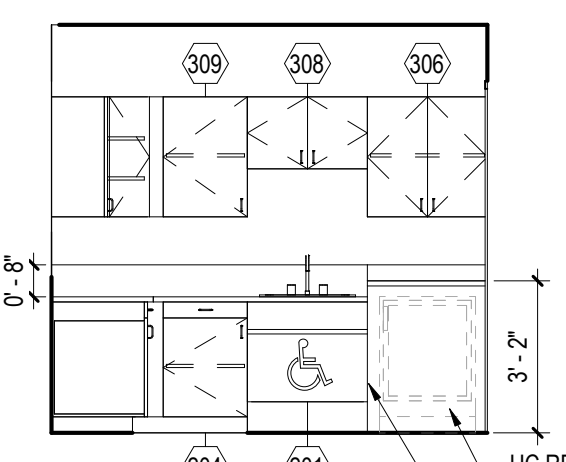
G INTERIOR ELEVATION G
1/4" = 1'-0"



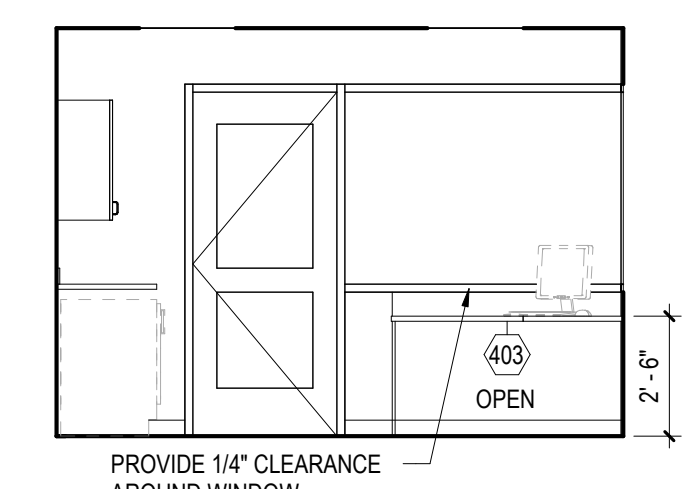
H INTERIOR ELEVATION H
1/4" = 1'-0"



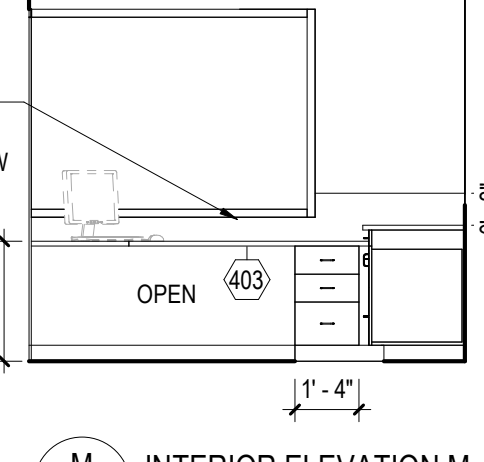
J INTERIOR ELEVATION J
1/4" = 1'-0"



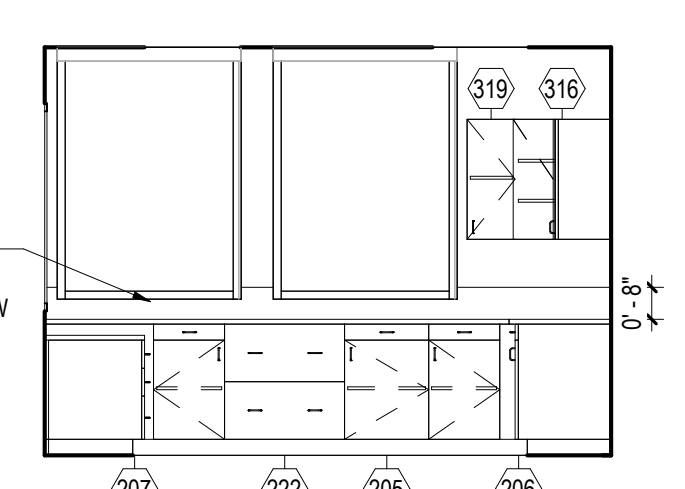
K INTERIOR ELEVATION K
1/4" = 1'-0"



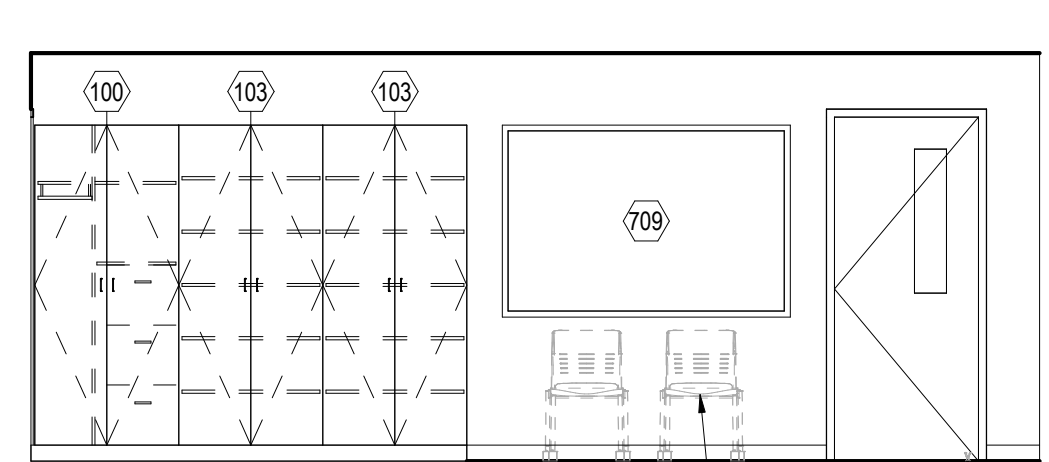
L INTERIOR ELEVATION L
1/4" = 1'-0"



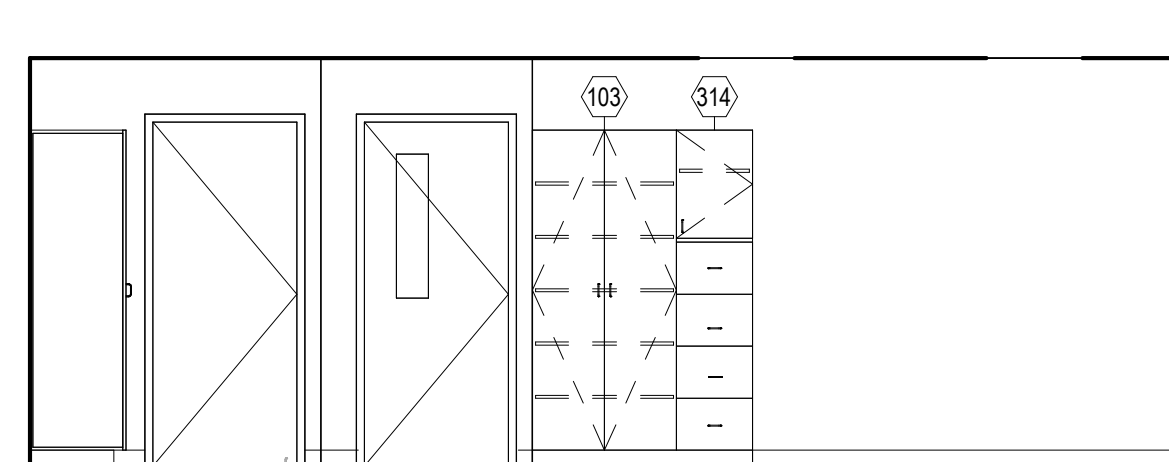
M INTERIOR ELEVATION M
1/4" = 1'-0"



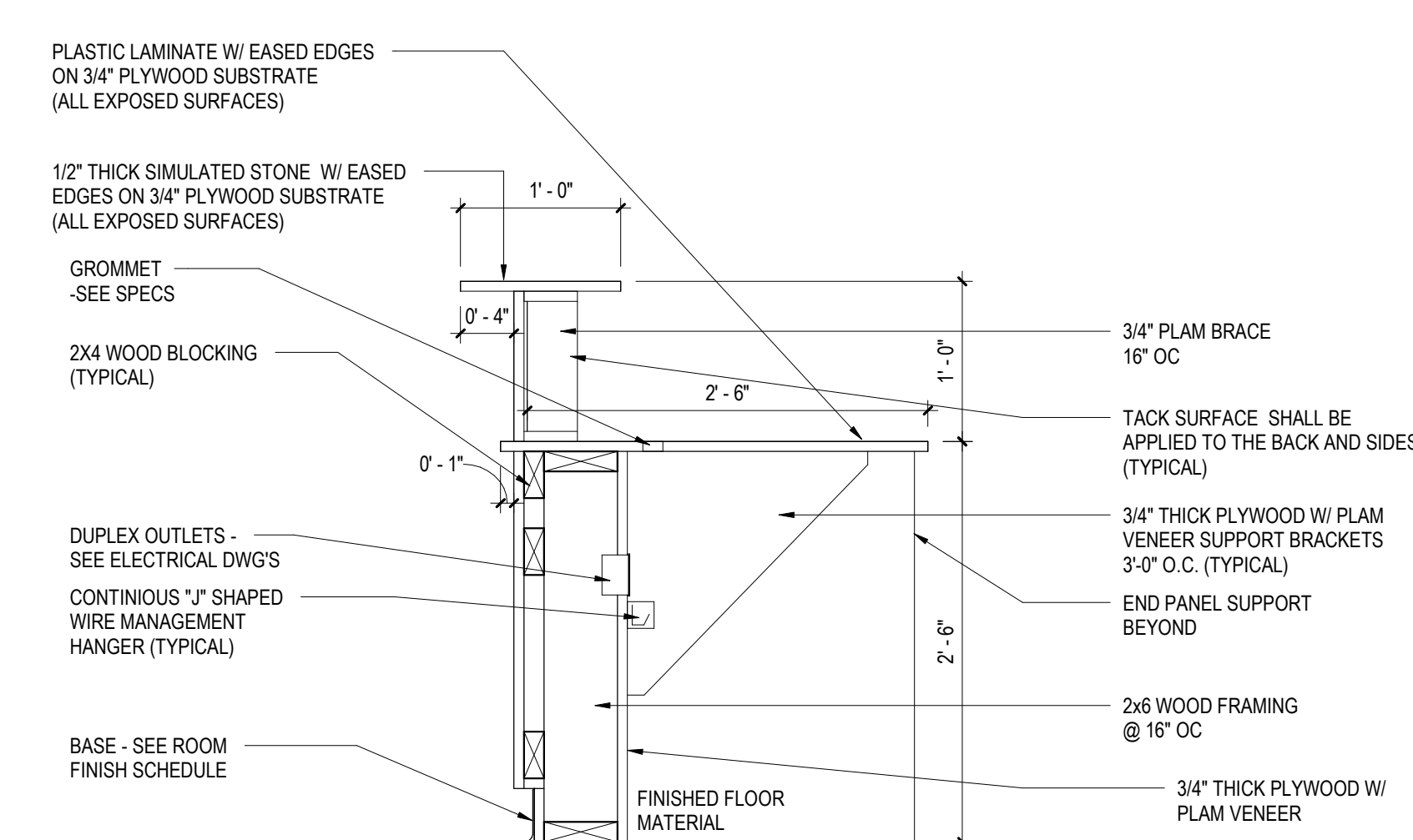
N INTERIOR ELEVATION N
1/4" = 1'-0"



P INTERIOR ELEVATION P
1/4" = 1'-0"



R INTERIOR ELEVATION R
1/4" = 1'-0"



2 ADMIN RECEPTION DESK CASEWORK DETAIL
1/4" = 1'-0"

GENERAL NOTE IN REFERENCE TO I4.2

1. ALL CASEWORK IN ADMINISTRATION, GUIDANCE AND NURSE'S AREA SHALL RECEIVE LOCKS.

ADMINISTRATION MOUNTING HEIGHT SCHEDULE

MARKER BOARD	3'-0" AFF TO BOTTOM EDGE
TACK BOARD	3'-0" AFF TO BOTTOM EDGE
BASE CABINETS	3'-0" AFF TO TOP OF CABINET
WALL CABINETS	7'-0" AFF TO TOP OF CABINET

ADMINISTRATION MOUNTING HEIGHT SCHEDULE SHALL BE APPLIED TO ALL ROOMS IN THE ADMINISTRATION, GUIDANCE, HEALTH AREAS AND ALL WORK ROOMS.

I4.2 - GENERAL CASEWORK AND EQUIPMENT SCHEDULE

NO	DESCRIPTION	MANUFACTURER	MODEL	DIMENSIONS
100	2-DOOR TEACHER'S WARDROBE - FIXED SHELF, ROD, PIN TRAY & MIRROR. MODIFIED TO INCLUDE LOCK, (3) FILE DRAWERS, & (2) ADJ. SHELVES	CASE SYSTEMS	T2780M	36"W x 24"D x 84"H
101	1-DOOR TALL WARDROBE W/HANGER ROD - LEFT HINGED	CASE SYSTEMS	T2310	24"W x 24"D x 84"H
103	2-DOOR TALL STORAGE	CASE SYSTEMS	T0100	36"W x 24"D x 84"H
201	ADA VANITY SINK BASE CABINET	CASE SYSTEMS	D1000M	30"W x 24"D x 34"H
203	2-DOOR/2-DRAWER BASE CABINET	CASE SYSTEMS	B3100	33"W x 24"D x 34"H
204	1-DOOR/1-DRAWER BASE CABINET - LEFT HINGED	CASE SYSTEMS	B3110	21"W x 24"D x 34"H
205	1-DOOR/1-DRAWER BASE CABINET - RIGHT HINGED	CASE SYSTEMS	B3120	21"W x 24"D x 34"H
206	1-DOOR/1-DRAWER BLIND BASE CABINET - LEFT SIDE EXPOSED	CASE SYSTEMS	B3220	45"W x 24"D x 34"H
207	1-DOOR/1-DRAWER BLIND BASE CABINET - RIGHT SIDE EXPOSED	CASE SYSTEMS	B3210	45"W x 24"D x 34"H
211	OPEN BASE CABINET	CASE SYSTEMS	B0000	30"W x 24"D x 30"H
212	3-DRAWER FILE BASE CABINET	CASE SYSTEMS	B4570	33"W x 24"D x 43"H
216	4-DRAWER FILE BASE CABINET	CASE SYSTEMS	B4580	19"W x 24"D x 56"H
221	2-DRAWER LATERAL FILE CABINET	CASE SYSTEMS	B7500	33"W x 24"D x 34"H
222	2-DRAWER LATERAL FILE CABINET	CASE SYSTEMS	B7500	30"W x 24"D x 34"H
300	2-DOOR WALL CABINET	CASE SYSTEMS	W0100M	33"W x 24"D x 40"H
304	2-DOOR WALL CABINET	CASE SYSTEMS	W0100	33"W x 14"D x 30"H
305	2-DOOR WALL CABINET	CASE SYSTEMS	W0100	33"W x 14"D x 24"H
306	2-DOOR WALL CABINET	CASE SYSTEMS	W0100	30"W x 14"D x 30"H
307	2-DOOR WALL CABINET	CASE SYSTEMS	W0100	30"W x 14"D x 24"H
308	2-DOOR WALL CABINET	CASE SYSTEMS	W0100	30"W x 14"D x 18"H
309	1-DOOR WALL CABINET - LEFT HINGED	CASE SYSTEMS	W0110	21"W x 14"D x 30"H
314	1-DOOR WALL CABINET - RIGHT HINGED	CASE SYSTEMS	W0120M	19"W x 24"D x 27"H
315	1-DOOR NARCOTICS WALL CABINET - LEFT HINGED W/LOCK	CASE SYSTEMS	Y3210	18"W x 9"D x 12"H
316	1-DOOR CORNER WALL CABINET - LEFT HINGED	CASE SYSTEMS	Y1210	24"W x 24"D x 30"H
317	MAILBOX WITH BACK & INDIVIDUAL SLOT LABEL HOLDERS	CASE SYSTEMS	H3700	48"W x 14"D x 54"H
318	MAILBOX WITH BACK & INDIVIDUAL SLOT LABEL HOLDERS	CASE SYSTEMS	H3700M	24"W x 14"D x 54"H
319	1-DOOR WALL CABINET - RIGHT HINGED	CASE SYSTEMS	W0120	12"W x 14"D x 30"H
400	RECEPTION DESK TO INCLUDE SIMULATED STONE TRANSACTION LEDGE WITH PLASTIC LAMINATE COUNTERTOP, (1) BOX/BOX/FILE, (1) FILE/FILE, (1) 2-DRAWER FILE CABINET, KEYBOARD TRAY, XOREL TACKBOARD, J-CHANNEL WIRE MANAGER, ANGLED SUPPORTS, & (1) GROMMET	CASE SYSTEMS	B4540, B4500, B4020, RKB30, GR600, X0650	WIDTH TO FIT x 30"D x 30"H/42"H
403	BUILT-IN PLASTIC LAMINATE COUNTERTOP WITH (1) BOX/BOX/FILE, FULL END PANEL, ANGLED SUPPORTS, & (1) GROMMET	CASE SYSTEMS	B4540, X0650, GR600	WIDTH TO FIT x 24"D x 30"H
404	BUILT-IN PLASTIC LAMINATE COUNTERTOP WITH (1) BOX/BOX/FILE, (1) FILE/FILE, (1) 2-DRAWER FILE CABINET, KEYBOARD TRAY, XOREL TACKBOARD, J-CHANNEL WIRE MANAGER, ANGLED SUPPORTS, & (1) GROMMET	CASE SYSTEMS	B4540, B4500, X0650, GR600	WIDTH TO FIT x 24"D x 30"H
701	MARKERBOARD	SEE SPECIFICATIONS	SEE SPECIFICATIONS	6'-0"W x 4'-0"H
712	MARKERBOARD	SEE SPECIFICATIONS	SEE SPECIFICATIONS	3'-0"W x 4'-0"H
709	TACK BOARD	SEE SPECIFICATIONS	SEE SPECIFICATIONS	6'-0"W x 4'-0"H
710	TACK BOARD	SEE SPECIFICATIONS	SEE SPECIFICATIONS	4'-0"W x 4'-0"H

REVISIONS

NO.	DATE	DESCRIPTION

CRABTREE ROHRBAUGH & ASSOCIATES - ARCHITECTS
 401 EAST WINDING HILL ROAD
 MECHANICSBURG PA 17055
 717-458-0272

TOWSON, MARYLAND
 CHARLOTTEVILLE, VIRGINIA
 WHITE SULPHUR SPRINGS, WEST VIRGINIA

PALMERTON AREA SCHOOL DISTRICT
 S.S. PALMER ELEMENTARY SCHOOL
 SECURITY VESTIBULE & RENOVATIONS
 238 LAFAYETTE AVENUE
 PALMERTON, PA 18071

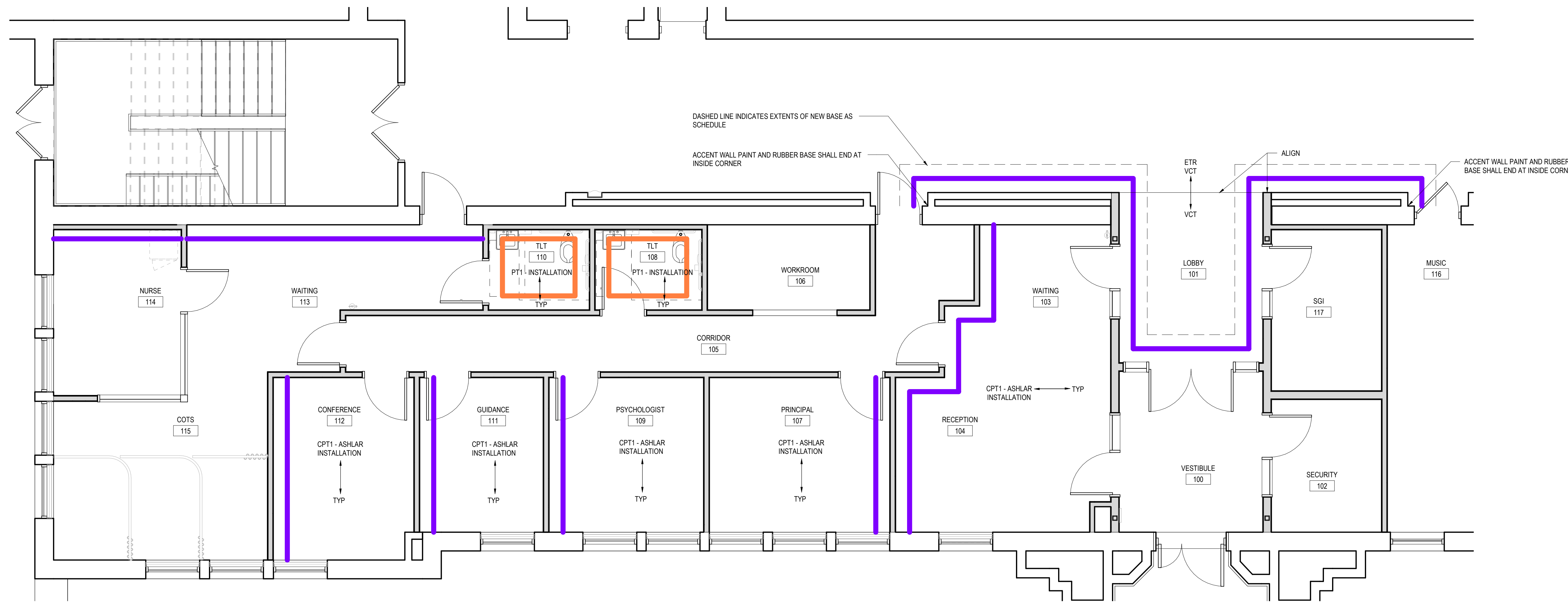
CR

LARGE SCALE LAYOUTS
 ADMINISTRATION,
 GUIDANCE, & NURSE

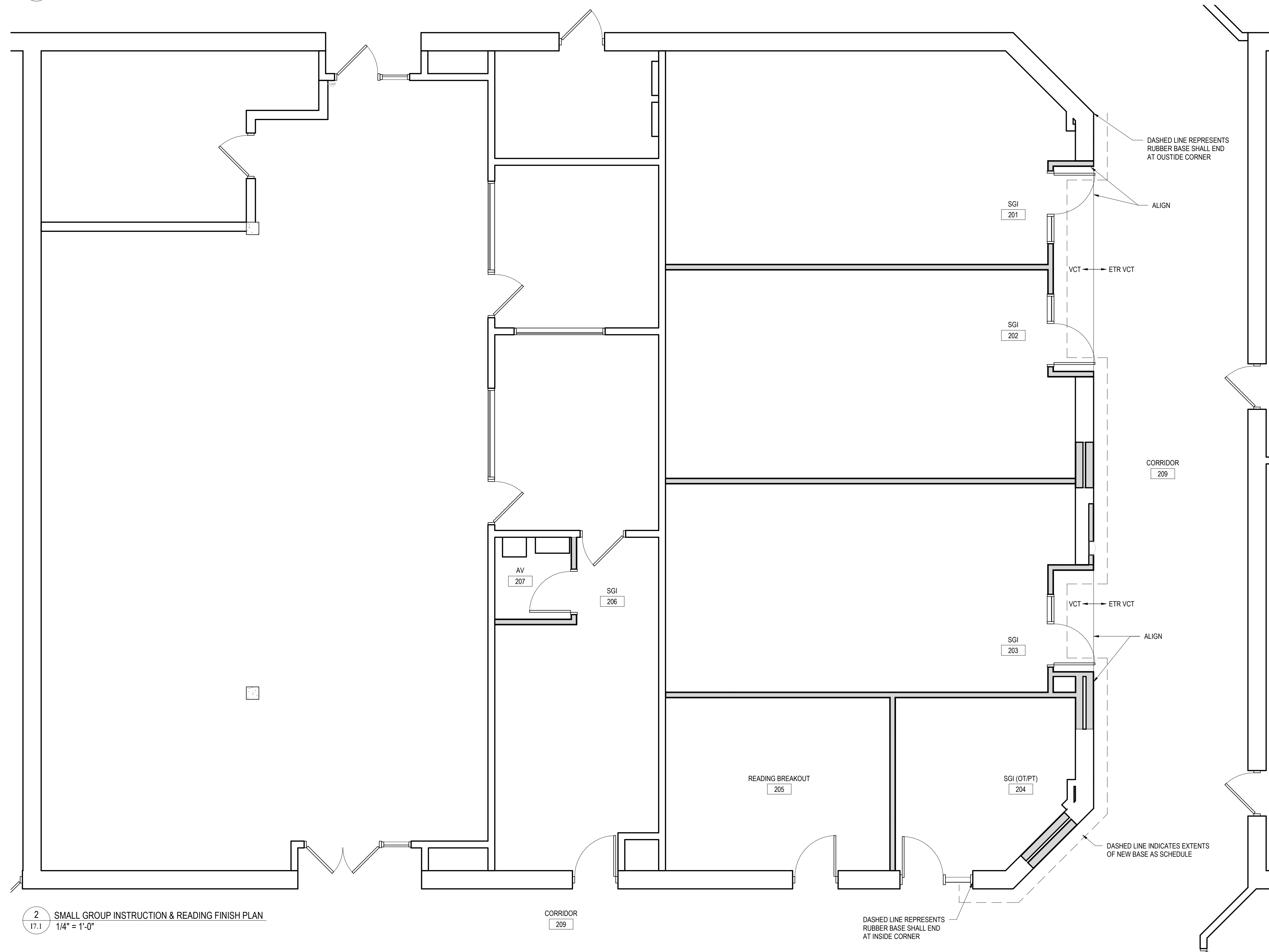
PROJECT
 3378.1

1/4"

FEBRUARY 9, 2024



1 ADMINISTRATION, GUIDANCE & NURSE FINISH PLAN
1/4" = 1'-0"



2 SMALL GROUP INSTRUCTION & READING FINISH PLAN
1/4" = 1'-0"

FINISH PLAN LEGEND	
	= ACCENT PAINT
	= WALL TILE

GENERAL NOTE IN REFERENCE TO ALL I7 DRAWINGS	
1. DRAWING IS FOR FLOOR PATTERN USE ONLY.	
2. PROVIDE FLASH PATCHING FOR CONTINUOUS TRANSITION OF ADJOINING MATERIAL.	
3. DRAWINGS ARE FOR CLARIFICATION OF MATERIAL LOCATIONS. REFER TO ROOM FINISH SCHEDULE, INTERIOR AND ARCHITECTURAL ELEVATIONS/PLANS AND SPECIFICATIONS FOR ADDITIONAL INFORMATION.	

TRANSITION SCHEDULE AS INDICATED ON I7 DRAWINGS	
CPT TO VCT	JOHNSONITE NO. CTA-H
PT TO VCT	MARBLE

SEE SPECIFICATIONS FOR ADDITIONAL INFORMATION.

REVISIONS		
NO.	DATE	DESCRIPTION OF CHANGES

CRABTREE ROHRBAUGH & ASSOCIATES - ARCHITECTS
 401 EAST WINDING HILL ROAD
 MECHANICSBURG PA 17055
 717-458-0272

TOWSON, MARYLAND
 CHARLOTTEVILLE, VIRGINIA
 WHITE SULPHUR SPRINGS, WEST VIRGINIA
www.cra-architects.com

PALMERTON AREA SCHOOL DISTRICT
S.S. PALMER ELEMENTARY SCHOOL
 SECURITY VESTIBULE & RENOVATIONS
 298 LAFAYETTE AVENUE
 PALMERTON, PA 18071

CR

PARTIAL FIRST & SECOND FLOOR - FINISH PLAN COLOR

PROJECT 3378.1

17.1

DATE: FEBRUARY 9, 2024

ALL REPORTS, PLANS, SPECIFICATIONS AND COMPUTER FILES RELATING TO THIS PROJECT ARE THE PROPERTY OF CRABTREE ROHRBAUGH & ASSOCIATES. CRABTREE ROHRBAUGH & ASSOCIATES RETAINS ALL COMMON LAW, STATUTE AND OTHER RESERVED RIGHTS INCLUDING THE COPYRIGHT THEREIN. REPRODUCTION OF THE MATERIAL HEREIN OR SUBSTANTIAL USE WITHOUT WRITTEN PERMISSION OF CRABTREE ROHRBAUGH & ASSOCIATES VIOLATES THE COPYRIGHT LAWS OF THE UNITED STATES AND WILL BE SUBJECT TO LEGAL PROSECUTION.
 © CRABTREE ROHRBAUGH & ASSOCIATES, INC. 2014