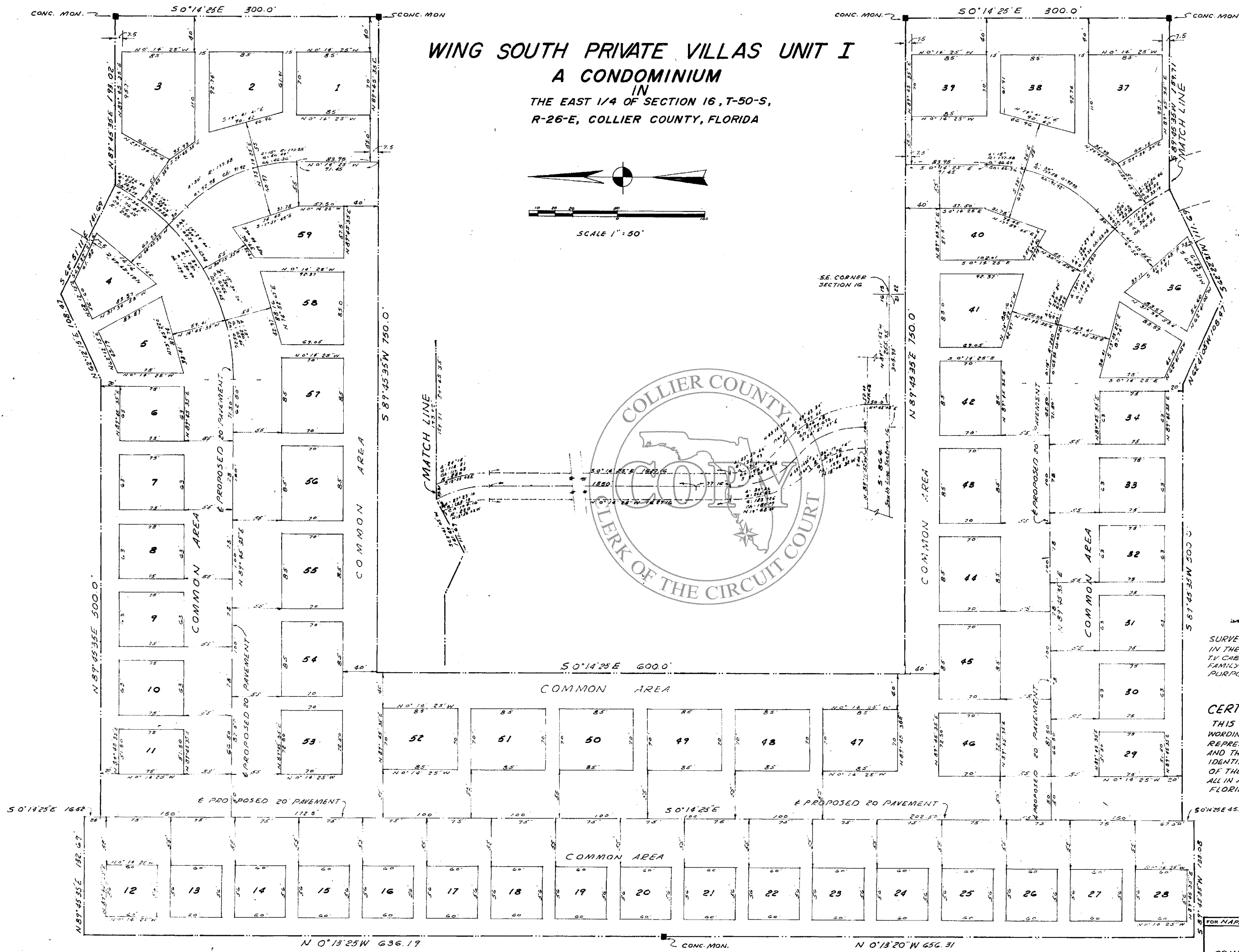
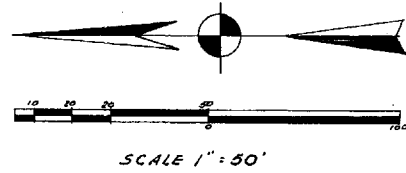


**WING SOUTH PRIVATE VILLAS UNIT I  
A CONDOMINIUM**  
IN  
THE EAST 1/4 OF SECTION 16, T-50-S,  
R-26-E, COLLIER COUNTY, FLORIDA



*Declaration of Condominium  
recorded in Official Record Book  
476 of page 304 thru 350 of  
Number 281357 on September 28,  
1972. Margaret J. Scott  
Clerk Circuit Court  
by Mary K. Ott, D.C.*

RECORDED BOOK  
OFFICIAL RECORD BOOK  
SEP 12 8 46 AM '72  
MARGARET J. SCOTT  
CLERK OF THE CIRCUIT COURT  
COLLIER COUNTY, FLORIDA

**DESCRIPTION**  
Commencing at the Southeast corner of Section 16,  
Township 50 South, Range 26 East, Collier County,  
Florida; Thence along the South line of Section 16,  
N 89° 11' 52" W, 255.95 feet; Thence N 0° 48' 08" E,  
50 feet to the Northerly Right-of-way line of State  
Road S-864 for a PLACE OF BEGINNING;

Thence along the Northerly right-of-way line of the  
above said right-of-way line, N 89° 11' 52" W, 100.0  
feet; Thence N 0° 48' 08" E, 2.44 feet; Thence  
131.58 feet along the arc of a circular curve, con-  
cave to the Southwest, radius 207.76, chord bearing  
N 18° 08' 38" W, 129.59 feet; Thence N 45° 14' 25" W,  
17.64 feet; Thence 183.73 feet along the arc of a  
circular curve, concave to the Northeast, radius  
285.82 feet, chord bearing N 19° 48' 00" W, 180.09  
feet; Thence N 0° 14' 25" W, 1627.16 feet; Thence  
105.15 feet along the arc of a circular curve, con-  
cave to the Southwest, radius 220.00 feet, chord  
bearing N 13° 56' 02" W, 104.16 feet; Thence  
S 62° 22' 21" W, 111.69 feet; Thence N 62° 41' 05" W,  
108.47 feet; Thence S 89° 45' 35" W, 500.00 feet;  
Thence S 0° 14' 25" E, 45.98 feet; Thence  
S 89° 45' 35" W, 133.08 feet; Thence N 0° 13' 20" W,  
656.31 feet; Thence N 0° 13' 25" W, 636.19 feet;  
Thence N 89° 45' 35" E, 132.69 feet; Thence  
S 0° 14' 25" E, 16.52 feet; Thence N 89° 45' 35" E,  
500.00 feet; Thence N 62° 12' 15" E, 108.47 feet;  
Thence S 62° 51' 11" E, 141.69 feet; Thence  
N 89° 45' 35" E, 193.02 feet; Thence S 0° 14' 25" E,  
300.00 feet; Thence S 89° 45' 35" W, 750.00 feet;  
Thence S 0° 14' 25" E, 600.00 feet; Thence  
N 89° 45' 35" E, 750.00 feet; Thence S 0° 14' 25" E,  
300.00 feet; Thence S 89° 45' 35" W, 159.71 feet;  
Thence 118.51 feet along the arc of a circular curve,  
concave to the Southwest, radius 280.00 feet, chord  
bearing S 12° 22' 02" E, 117.63 feet; Thence  
S 0° 14' 25" E, 1627.16 feet; Thence 151.41 feet  
along the arc of a circular curve, concave to the  
Northeast, radius 138.93 feet, chord bearing  
S 26° 55' 23" E, 126.63 feet; Thence S 45° 14' 25" E,  
17.64 feet; Thence 206.08 feet along the arc of a  
circular curve, concave to the Southwest, radius  
237.45 feet, chord bearing S 24° 51' 47" E, 199.68  
feet; Thence S 0° 48' 08" W, 2.44 feet to the Place  
of Beginning, being part of the East 1/4 of Section  
16, Township 50 South, Range 26 East, Collier County,  
Florida.

**SURVEYOR'S NOTE:** PROPOSED IMPROVEMENTS  
IN THE COMMON AREA NOT SHOWN ARE WATER, SEWER,  
TV CABLE AND ELECTRIC CONNECTIONS TO EACH  
FAMILY UNIT AND DRIVEWAYS. EASEMENTS FOR THESE  
PURPOSES ARE RESERVED.

**CERTIFICATION:**  
THIS SURVEYOR PLAN TOGETHER WITH THE  
WORDING OF THE DECLARATION IS A CORRECT  
REPRESENTATION OF THE IMPROVEMENTS DESCRIBED  
AND THERE CAN BE DETERMINED THEREFROM THE  
IDENTIFICATION, LOCATION, DIMENSIONS AND SIZES  
OF THE COMMON ELEMENTS AND OF EACH UNIT.  
ALL IN ACCORDANCE WITH CHAPTER 710.08 (6)  
FLORIDA STATUTES.

BRUCE GREEN & ASSC. INC.  
*Bruce D. Green*  
BY: BRUCE D. GREEN P.L.S. # 1270

EXHIBIT A

FOR NAPLES INTER-MONETARY, INC.  
**BRUCE GREEN & ASSOCIATES, INC.**  
LAND SURVEYORS & ENGINEERS  
NAPLES, FLORIDA

BOOK	PAGE	W.D.
DRAWN BY	DATE	FILE NO.
SCALE 1" = 50'	6-29-72	46-1

Exhibits "B" + "C"