
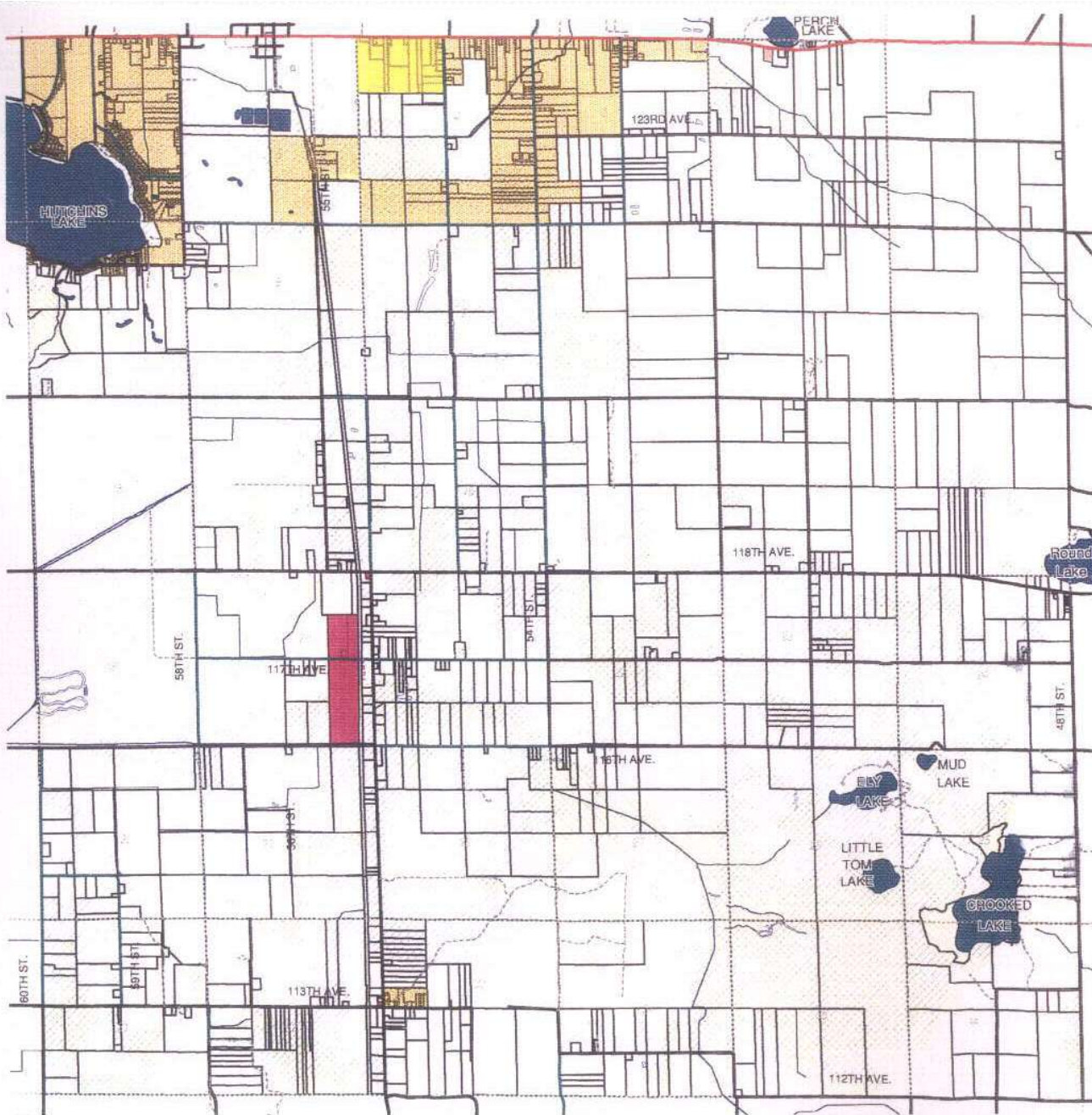


Zoning Map

Clyde Township
Allegan County, Michigan

Zoning Districts

-  C1-BUSINESS DISTRICT
-  C2-BUSINESS DISTRICT
-  I-INDUSTRIAL
-  R1-RURAL RESIDENTIAL
-  R2-LOW DENSITY RESIDENTIAL
-  R3-MEDIUM DENSITY RESIDENTIAL
-  R4-LAKE RESIDENTIAL
-  R5-MOBILE HOME PARK DISTRICT
-  PUD-PLANNED UNIT DEVELOPMENT



Basemap Legend

Source: Allegan County GIS Department

- | | | | |
|---|--|--|---|
|  Expressway |  County Local Road |  Section Boundary |  Drain |
|  State Highway |  County Line Unimproved |  Township, City and County Boundaries |  36 Section Number |
|  County Primary Road |  Road / City Minor Roads |  Lake |  Hydrant Scale |
|  County Primary Unimproved |  Trails & Unimproved Roads / City Major Roads |  River |  NPI Wetlands |



Scale 1 : 42,000
One Inch = 3500 Feet