

EIGHTY-NINE

LONDON, EC2A

Contact Us
welcome@secretlifeof89.com



89 IS A UNIQUE CREATIVE COMPLEX, SITUATED IN A BEAUTIFULLY CONVERTED WAREHOUSE, OFFERING A STUNNING SETTING FOR PHOTOGRAPHY, FILM SHOOTS, AND EVENTS.

The warehouse features exposed brickwork, pitched ceilings, and expansive windows that flood the spaces with natural light, creating an inspiring and versatile environment. Spanning across the property, the spaces include a private courtyard, a large private terrace, and a rooftop terrace boasting 360-degree views of the iconic London skyline.

At 89, we are committed to providing excellence through a client-first ethos. Our experienced team is dedicated to supporting you at every step, ensuring each moment in our spaces is tailored to meet your needs, whether you're creating, collaborating, or celebrating.

TERMS & CONDITIONS AVAILABLE ON REQUEST

LOCATION

The building is perfectly located just north of Liverpool Street Station in the heart of Shoreditch, with a range of restaurants, bars and shops in the immediate vicinity.

Just short walk from Liverpool Street Station, Old Street and Shoreditch High Street.

Liverpool Street Station **7 mins**

Old Street Station **9 mins**

Shoreditch High Street Station **10 mins**

FEATURES

Converted Warehouse with Exposed Brickwork and Pitched Ceiling

End of Trip Facilities

Private Courtyard

Large Private Terrace & Private Roof Terrace

Great Natural Light & High Ceilings

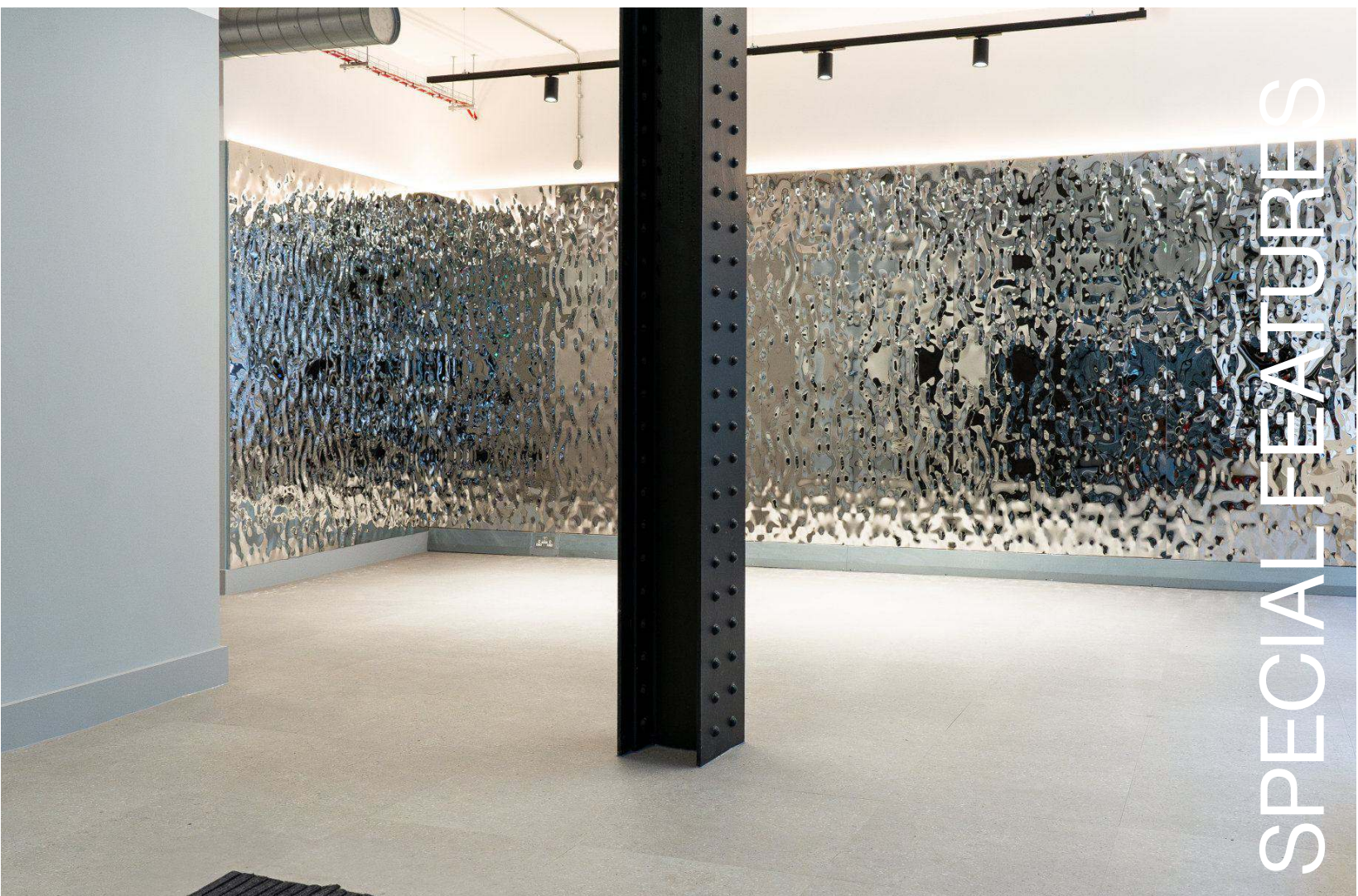
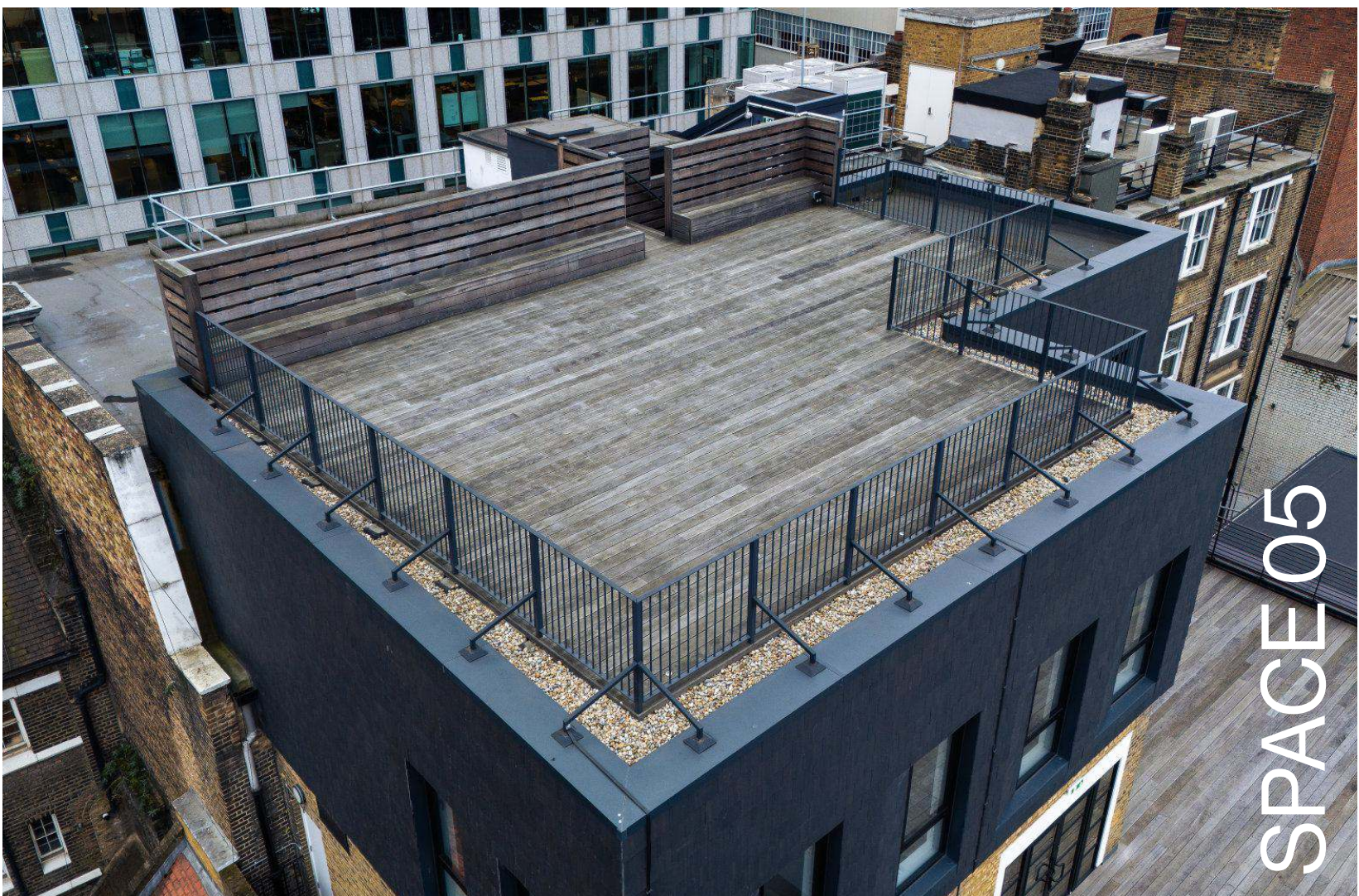
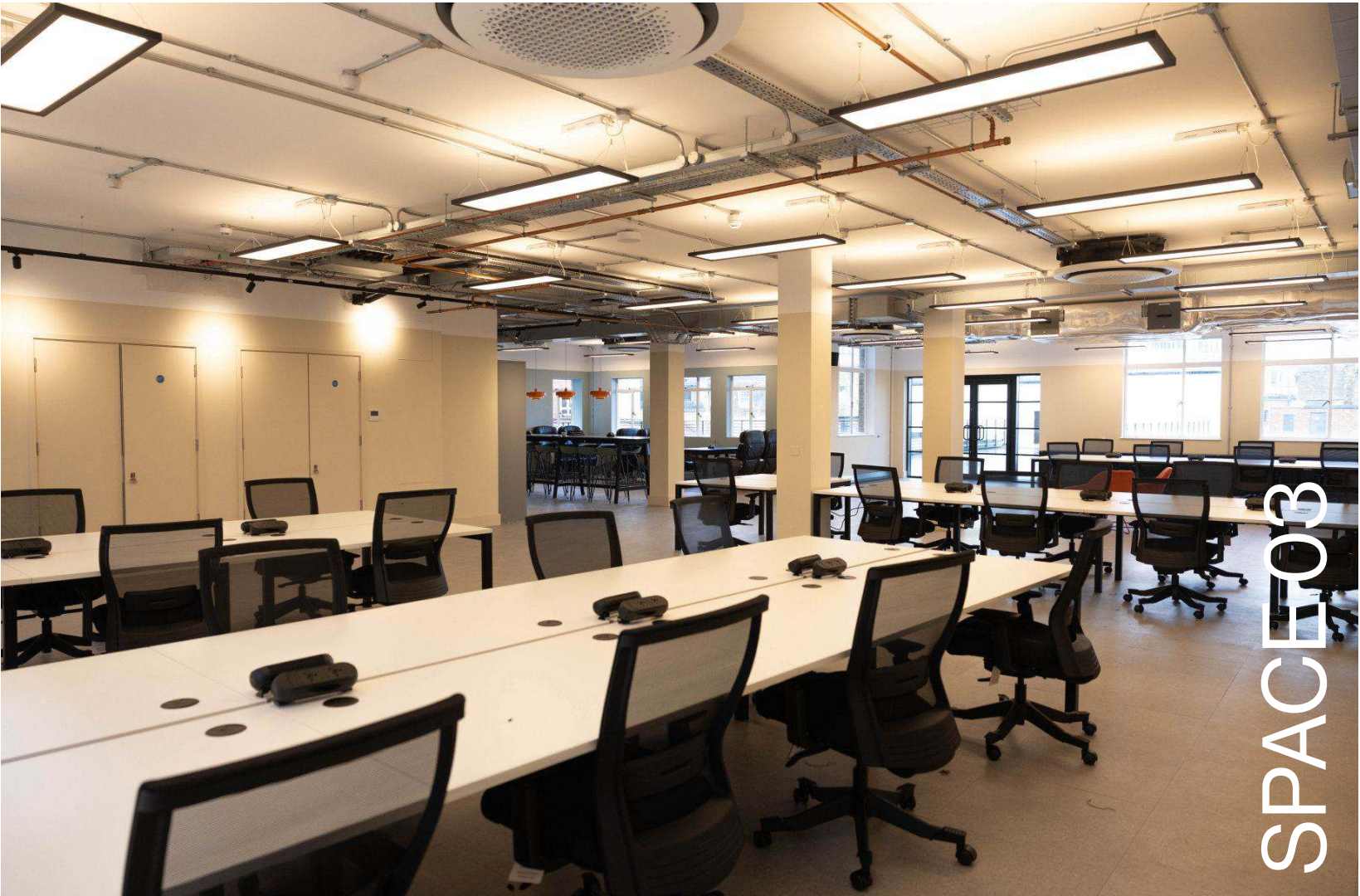
Air-Conditioning

Located Next to Liverpool Street Station

Warehouse Features

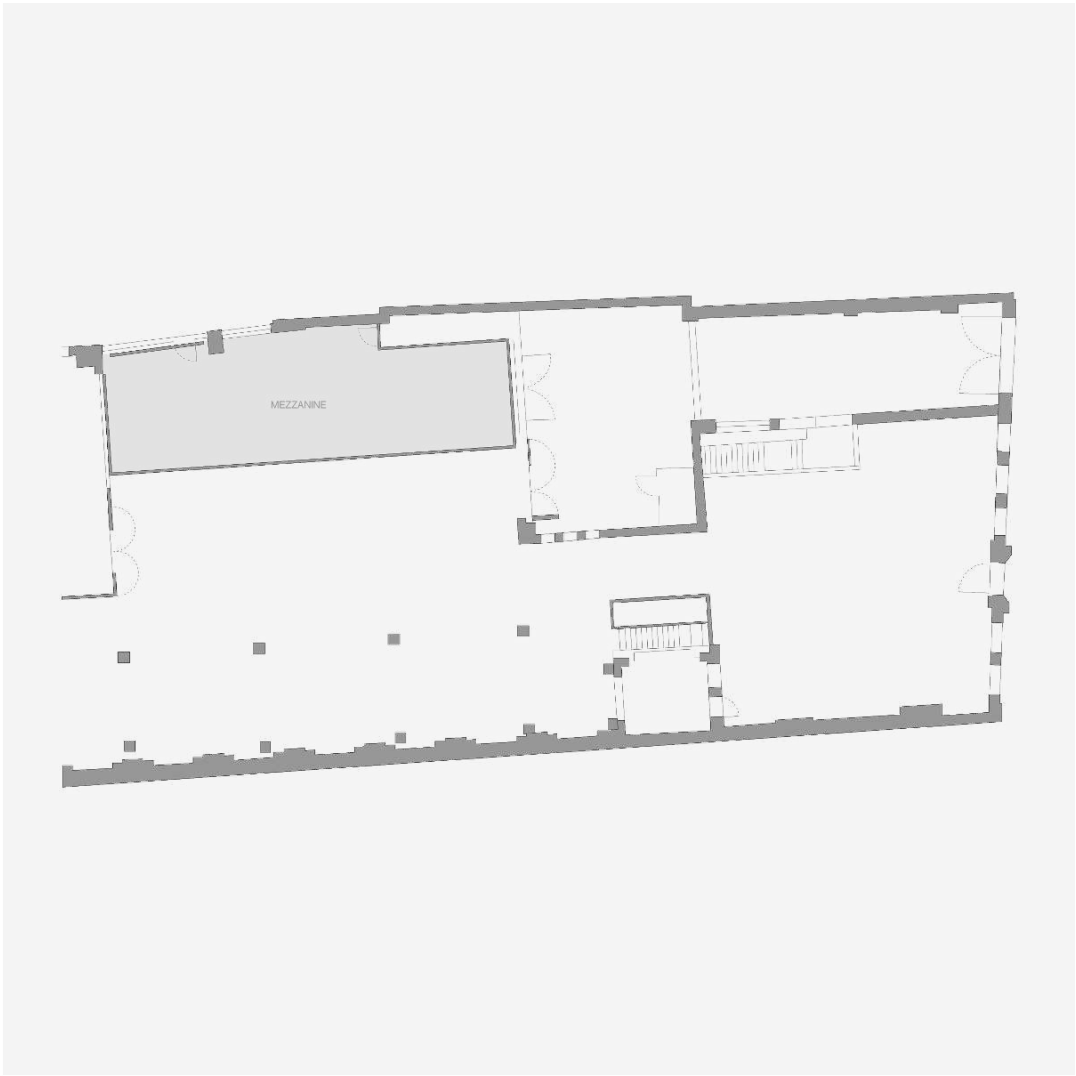
Roof Terrace with 360 views of London Skyline

CONTENTS





SPACE 01



[SEE FLOORPLAN ↗](#)

[SEE MORE IMAGES HERE ↗](#)

FEATURES

5,954 Sq Foot

Open Plan

Industrial Brick

Power Sockets

Air Con/Heating

Open Mezzanine

Bifold Doors

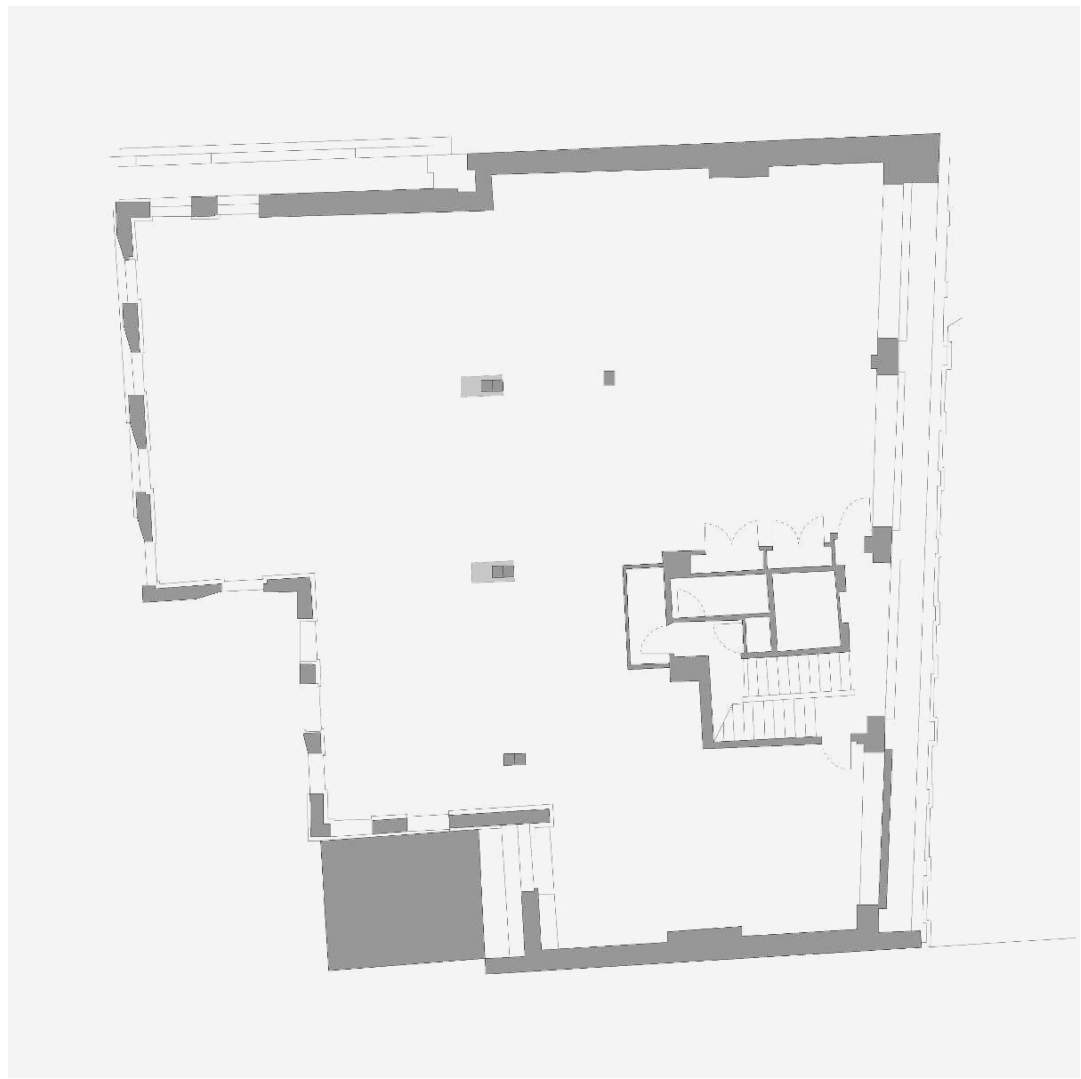
4x Outdoor Heaters

EVENT CAPACITY

Standing	496 - 595
Theatre Seating	298 - 397
Classroom Seating	238 - 297
Banquet Seating	298 - 397
Open Workspace	40-60



SPACE 02



[SEE FLOORPLAN ↗](#)

[SEE MORE IMAGES HERE ↗](#)

FEATURES

2,724 Sq Foot

Open Plan

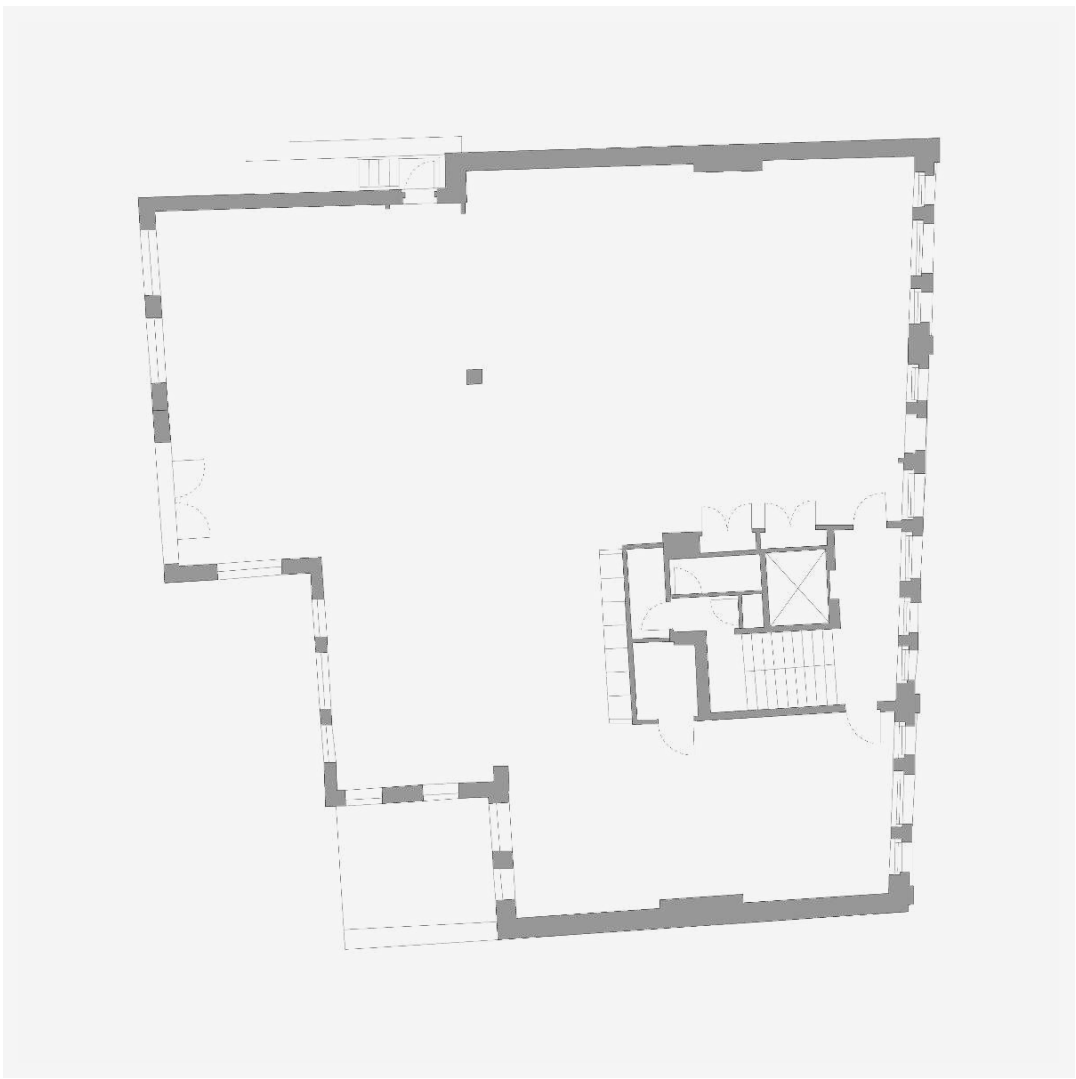
Wi-Fi

Air Con/Heating

Power Sockets



SPACE 03



[SEE FLOORPLAN ↗](#)

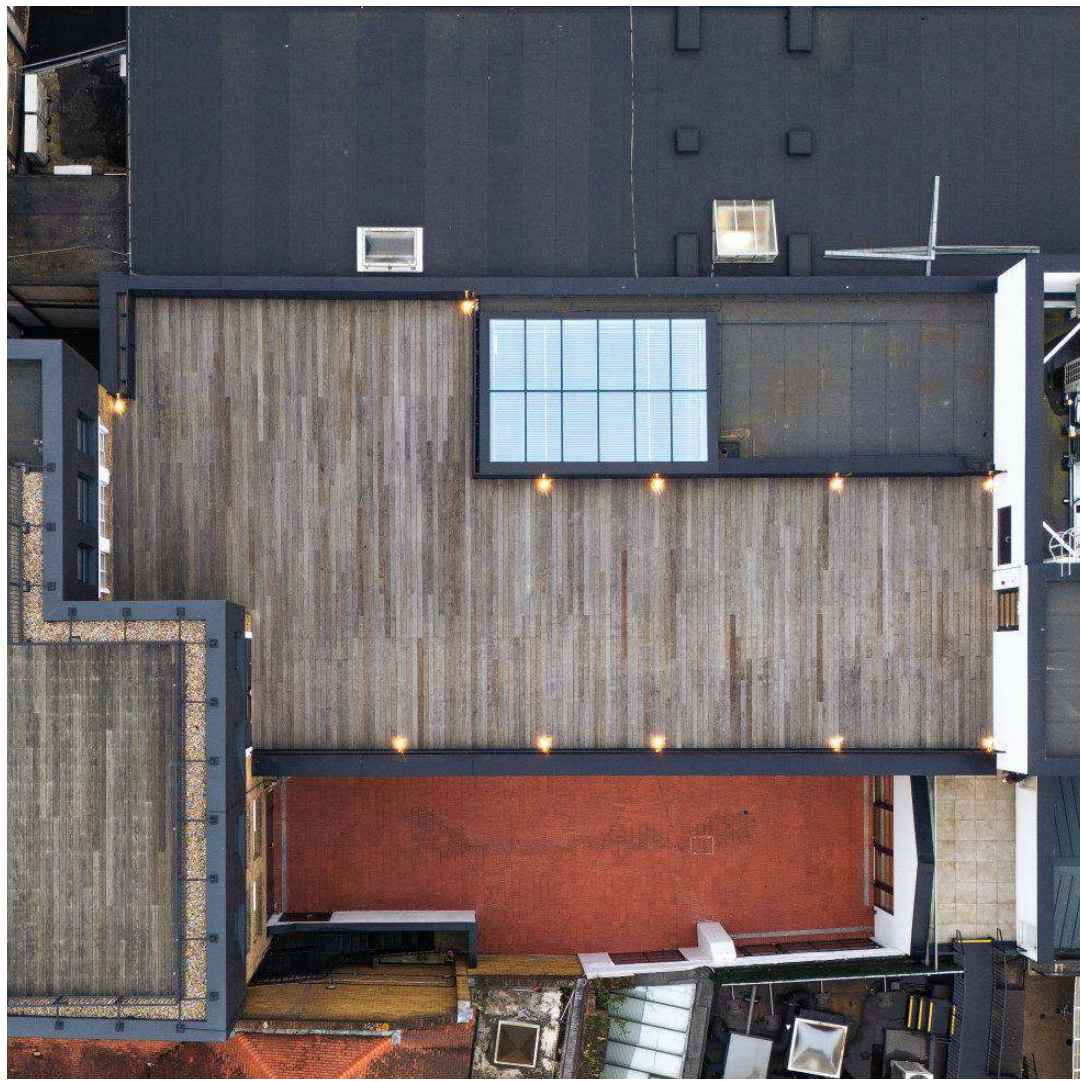
[SEE MORE IMAGES HERE ↗](#)

FEATURES

- 2,724 Sq Foot
- Desk Space (32 Desks)
- Breakout Area
- Open Plan Functional Kitchen
- 2x 8 Person Meeting Rooms (TV & AV)
- Air Con/Heating
- Power Sockets



SPACE 04



[SEE MORE IMAGES HERE ↗](#)

FEATURES

C. 5000 Sq Foot

Outdoor Terrace

Outdoor Power Supply

Disable Access

London City Views



SPACE 05



[SEE MORE IMAGES HERE ↗](#)

[SEE THE VIEW ↗](#)

FEATURES

C. 2000 Sq Foot

Roof Top Terrace

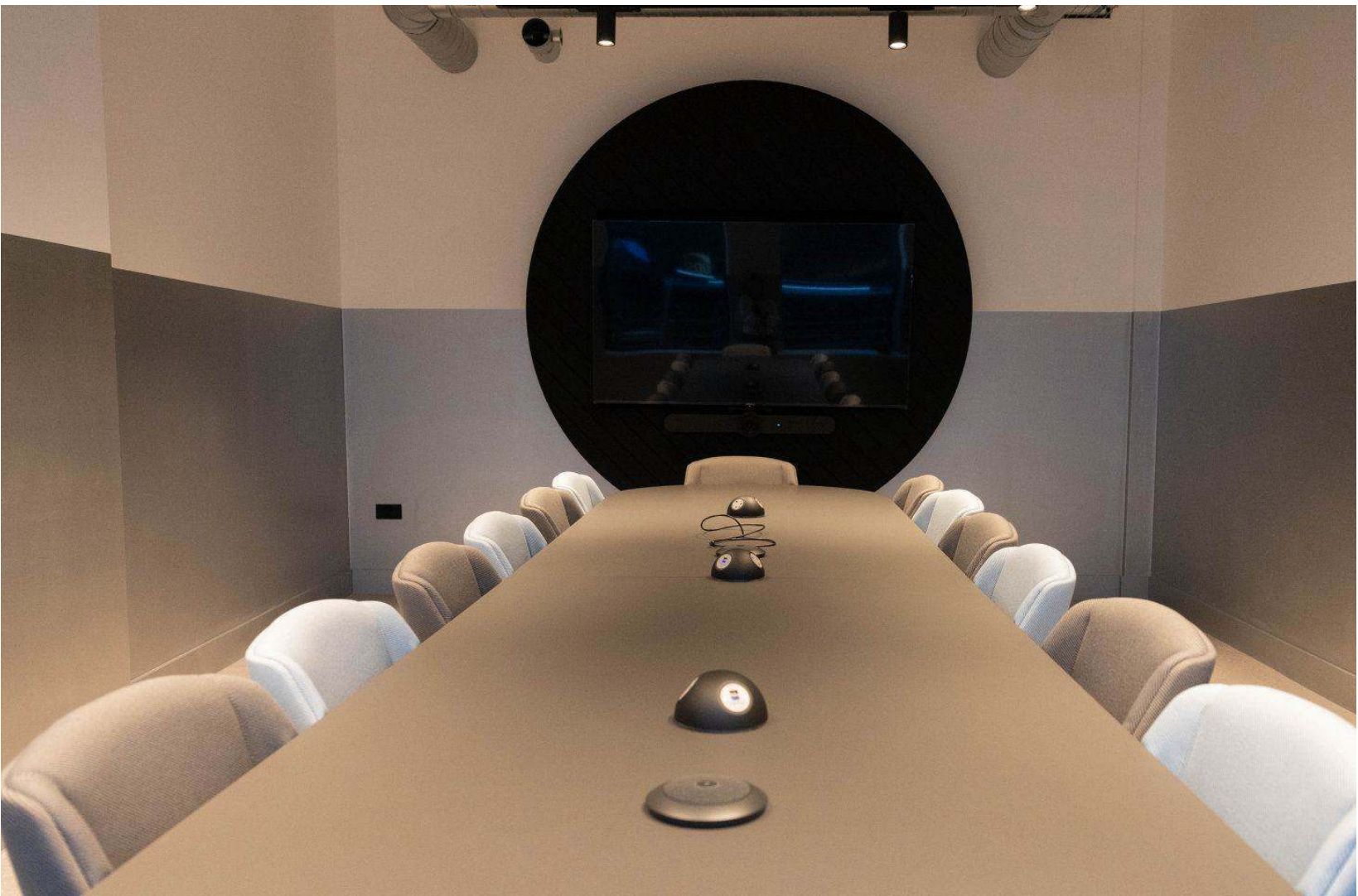
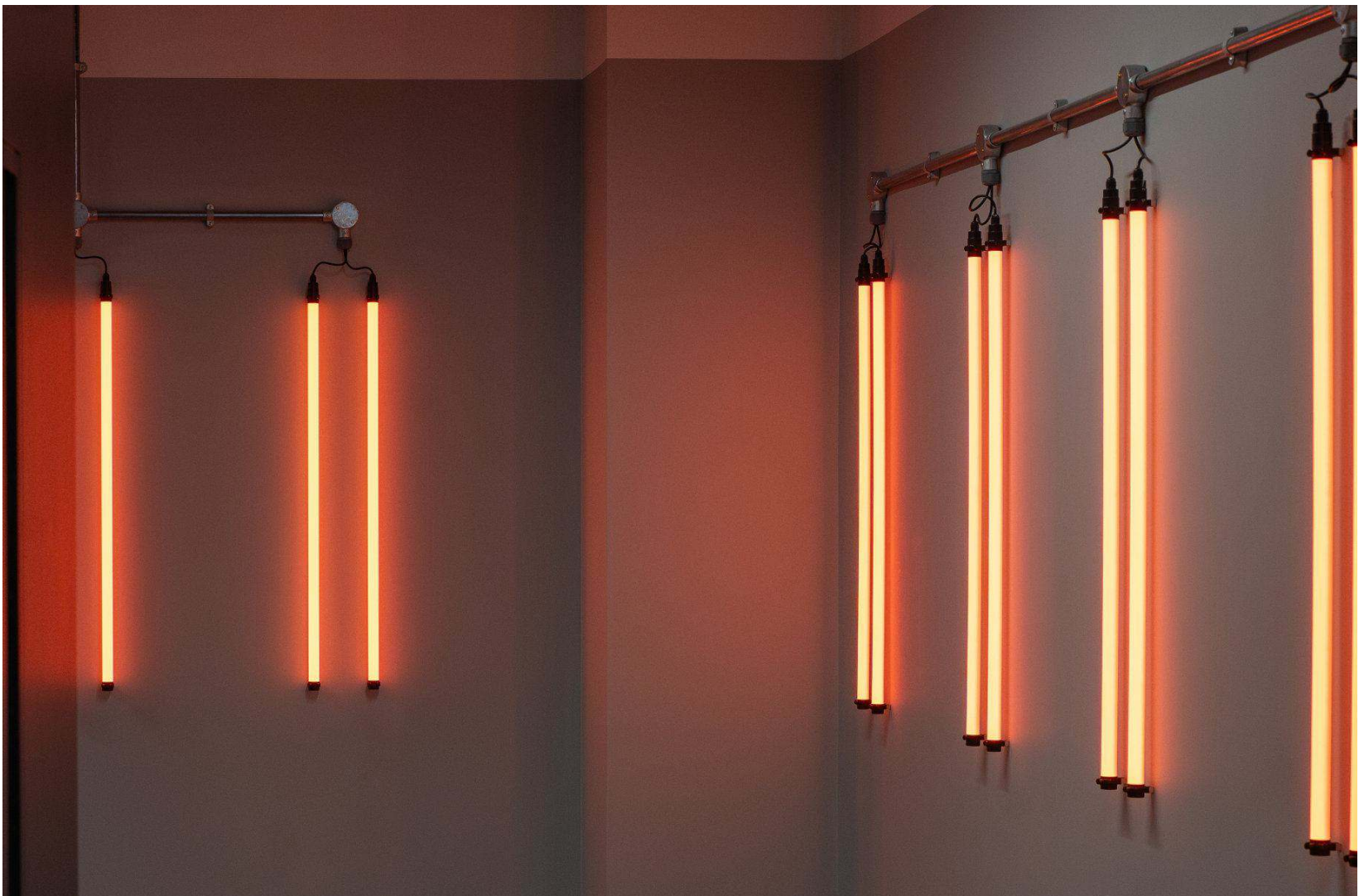
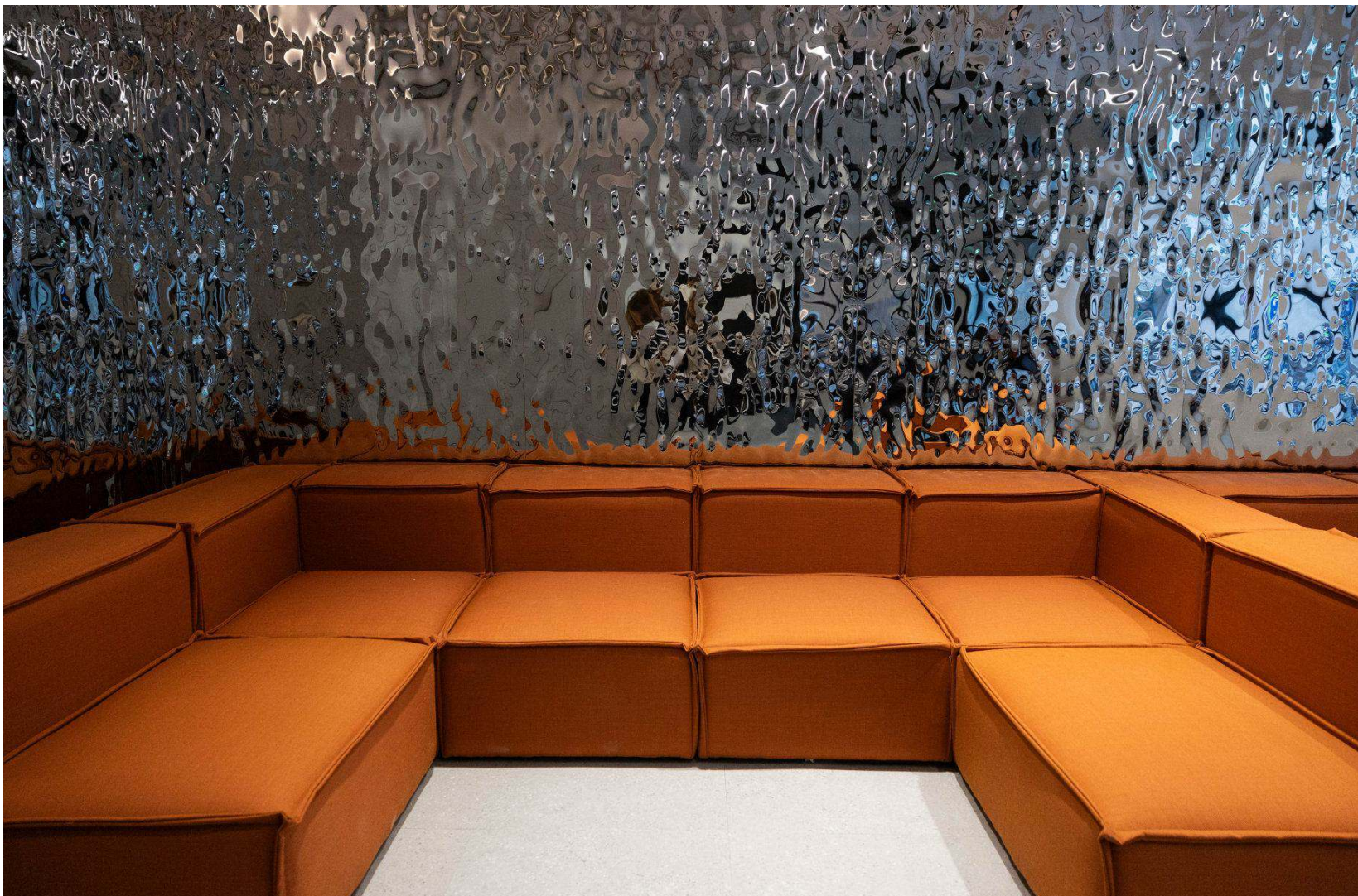
360° London View

Outdoor Power Supply

Bench Seating

SPECIAL FEATURES

SEE MORE IMAGES HERE ↗



For enquiries contact **welcome@secretlifeof89.com**

