

Dear OLV Family,

It's hard to believe that we are wrapping up the second month of school since returning to in person instruction! The school year has been off to a great start, with students engaged in remote learning and in person instruction at all of our sites. The innovative ways that teachers and staff have utilized technology is impressive to say the least - you are providing our students with new opportunities and a different skill set that they may never have experienced if we weren't pushed to think outside of the box and do things a different way, and I commend you for that. There is a conscious effort to put relationship building and social-emotional skill development at the forefront, and the efforts you are doing each day to help ease the transition back is really making a difference. You should be very proud!

One of the major initiatives that the Education Division will be working towards this school year now that we have eased back into what is our "new normal" is creating a shared mission and value statement. In doing so, we will reinforce why we are here and who we serve in our school programs. It is our goal to provide a common sense of purpose and identity, provide long term direction and clearly communicate what our programs are about. Part of this initiative will involve creating school logos and branding to really showcase our programs and talents within. Principals have sent out staff input surveys to gather feedback around these ideas, and then focus groups will be formed to create draft mission and vision statements. Please let your principal know if you are interested in participating! The survey can also be accessed [here](#) if you have not taken it already and wish to do so.

Thank you for your commitment to those we serve, and I look forward to an exciting school year ahead!

Sincerely,

Stephanie Guadagna , Chief of Education & Residential Services Officer



## OLV Enrollment Statistics - In Person and Virtual Learners

	Total Enrolled	In Person	Virtual
Monarch Clients	76	63	13
St. John's Clients	84	84	16
Early Childhood Peers	48	48	0
Baker Academy	74	43	31
Baker Hall	85	56	29
RTF Classrooms	29	29	0
ITP School	22	21	1

### *Building and Leadership Updates*

- The renovations at **St. Francis**, located at **125 Martin Rd**, are just about complete, and the ITP Classrooms have begun the school year in the new building. The building looks beautiful, and thanks again to our maintenance team for making this happen in such a short amount of time!
- **Baker Academy** has moved to its new home at 650 Ridge Rd! In addition to the move, I would also like to welcome John Collins, our new principal at Baker Academy to the OLV Family. John comes with over 15 years of experience working with students with diverse needs, as a special education teacher, Therapeutic Crisis Intervention (TCI) instructor, crisis support counselor and administration in a variety of settings. Welcome, John!
- Greg Graham has moved into a new position as the Education Learning and Development Coordinator and will be working in all programs across the Education Division. Greg has over 20 years of experience working with young adults and looks forward to meeting those of you that he does not know already!
- Sherri Bartz has moved into her position as the Curriculum Coordinator. Sherri has over 20 years of experience as a school counselor and administrator in education. She will be working to implement ongoing leadership on curricular, instructional, assessment, and digital learning functions across our school programs. She will also assist in developing and implementing short and long range Pre-K to 12 curricular goals in each of our programs.
- Trista Kleotzer is our new principal at our Residential School, overseeing the educational programming for students in our ITP, RTF and OCFS residential programs. Trista worked as a teacher and administrator for 3 years at Baker Hall School. Prior to her career at OLVHS, Trista has had a vast array of experiences both as a building leader, as a site Director for a School Aged Child Care Center and Classroom Teaching.
- Mike Gunthrop has joined our team in August as principal at Baker Hall School. He comes from Maryland with nearly 15 years of experience working with students with special needs. He has served as a classroom teacher, IEP case manager, academic coordinator, assistant administrator and program director at several special education programs in Maryland.



*John Collins, Principal  
at Baker Academy*



*Greg Graham, Learning &  
Development Coordinator*



*Sherri Bartz, Curriculum &  
E-Learning Coordinator*



*Trista Kleotzer, Principal  
at St. Francis*



*Mike Gunthrop, Principal  
at Baker Hall*



### *Covid-19 Updates from Lyndsey Todaro, Director of School Age Education*



We are happy to have our students back for the 2020-2021 school year! Our teachers and staff are working diligently to ensure their safety at school each and every day. We wanted to share a few updates as new guidance is communicated by Governor Cuomo, the New York State Department of Health along with the Erie County Health Department.

- The New York State Department of Health created a Toolkit for schools regarding COVID-19 and guidance about sending your child to school. Please see attached. We will be following this flowchart to ensure the health and safety of our students and staff.
- Governor Cuomo has directed schools to discontinue in person instruction within "hot spot" zip codes as COVID-19 cases rise in certain areas. Right now, Western New York is not listed as a "hot spot" but we want to be prepared if anything should change in our community. Therefore, we will communicate as quickly as possible if we need to pivot to a full virtual instructional model. Our teachers are working very hard to prepare materials and set up virtual platforms in the event that this may occur.

As always, we appreciate your support and continued patience through this unprecedented time. If you have any questions, please contact your child's school principal.

### *Agency-Wide Updates*



- For those that may not be aware, each year, we put together Thanksgiving food baskets for our OLVHS clients/families that are in need, which includes a turkey and all the trimmings. If you are interested in donating, collection boxes for non-perishable items are available at each school.
- Do you know anyone who may be interested in working at OLV Human Services and wants to make a difference in the lives of others? There is currently a **\$500 REFERRAL BONUS** in place! Check out the link on Ultipro to learn more!
- The OLV Human Services Virtual Benefit Fair will take place from November 2nd-13th! Please check your email in the upcoming weeks for more information.

### *Employee of the Month!*



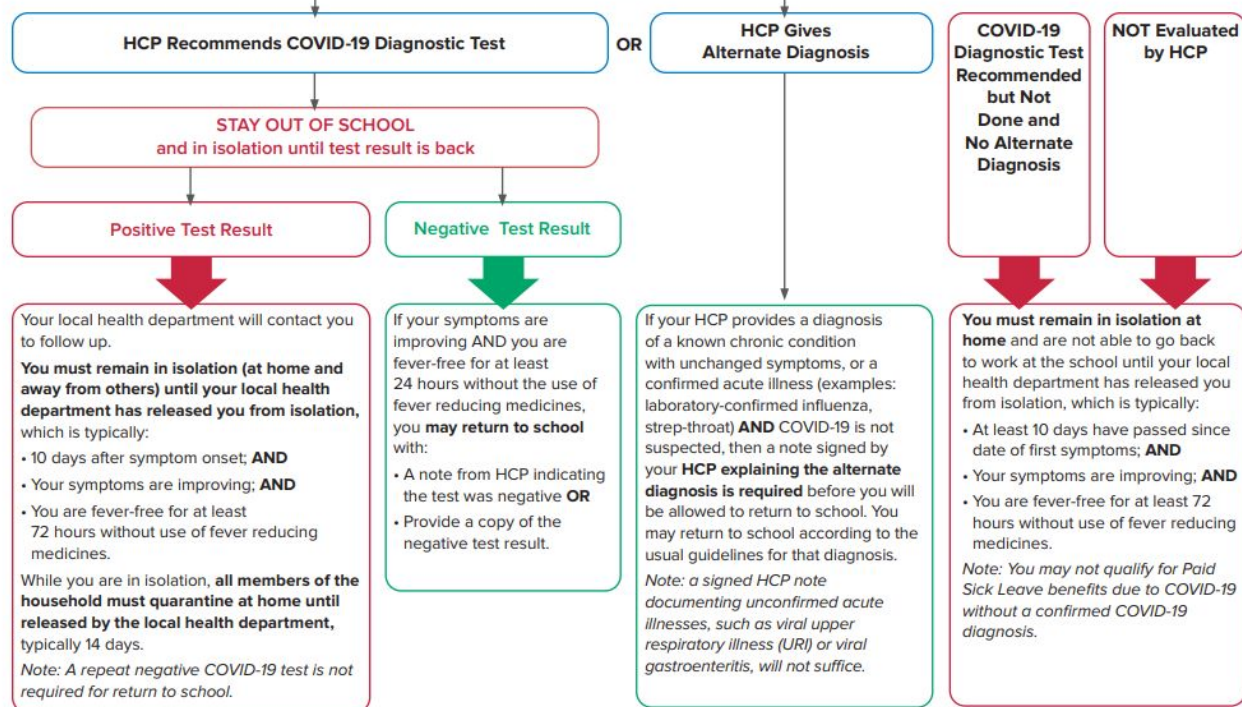
Going forward, each month we will be highlighting a staff member in the Education Division who stands out for demonstrating our agency values. After reviewing nominations, one person will be chosen and recognized as the *Education Division Employee of the Month!*

Please complete the form below by the the **3rd FRIDAY** of each month to submit a nomination. Winners will be chosen through a voting process completed by the Leadership Team, and a prize will be given to each monthly winner.

<https://forms.gle/ynd22ox3KH23mj1r9>

## I have COVID-19 symptoms. When can I go back to work at the school?

HEALTHCARE PROVIDER (HCP) EVALUATION FOR COVID-19 (can be in-person or by video/telephone as determined by HCP)

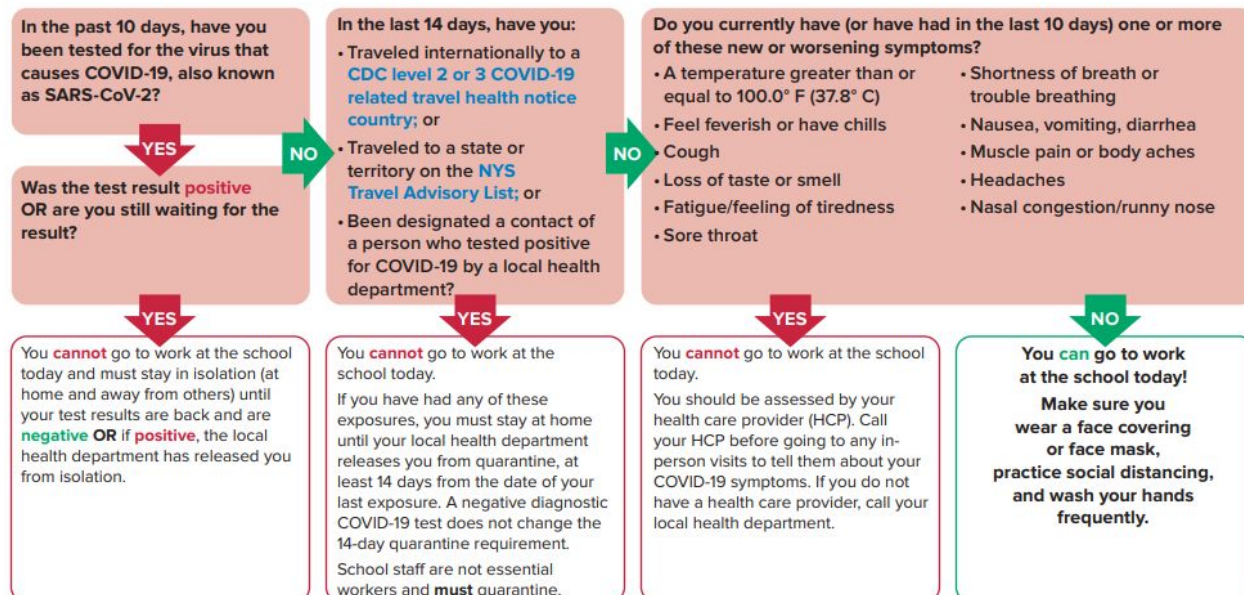


COVID-19 diagnostic testing includes molecular (e.g., PCR) or antigen testing for SARS-CoV-2, the virus that causes COVID-19. Diagnostic testing may be performed with a nasopharyngeal swab, nasal swab, or saliva sample, as ordered by the health care provider and per laboratory specifications. At times, a negative antigen test will need to be followed up with a confirmatory molecular test. Serology (antibody testing) cannot be used to rule in or out acute COVID-19.

September 2020 | B-2

## NYSDOH COVID-19 In-Person Decision Making Flowsheet for Staff To Go To Work

### Can I Go to Work at the School Today?



Report absences, symptoms, and positive COVID-19 test results to your school.

### SEEK IMMEDIATE MEDICAL CARE IF YOU HAVE:

- Trouble breathing or are breathing very quickly
- Are too sick to drink fluids
- Severe abdominal pain, diarrhea or vomiting
- Change in skin color - becoming pale, patchy and/or blue
- Racing heart or chest pain
- Decreased urine output
- Lethargy, irritability, or confusion





### *Social-Emotional Well Being*

Hello, my name is Greg Graham , Learning and Development Coordinator with the Education division. My favorite quote is “No significant learning occurs without a significant relationship” (Dr. James Comer). I want to take this opportunity to let you know what my role will be as I support our programs. The Learning and Development Coordinator is responsible for planning and coordinating a wide range of training topics across the Education Division related to strategic initiatives. I will be working with our school communities to coach

and guide on implementation of Trauma Informed Care, Restorative Practices and Social Emotional Learning. Below is a brief summary of each area which will be a key focus as within our schools.

**What is Trauma:** An occurrence which outside the scope of everyday human experiences and would be notably distressing to almost anyone. Trauma Informed Care Services allow students to feel safe, feel accepted, feel understood by everyone who may come in contact with them.

**What is Restorative Practices:** Restorative Practices is an emerging area of study focused on finding respectful and effective ways to build community, restore relationships and repair harm. Restorative Practices is a shift away from thinking about rules being broken, who broke the rule and how do we punish the people who broke the rule. It's a shift towards thinking about how we repair the harm caused by a dispute, conflict disagreement and meet the needs so that the relationships and community within the school can be restored.

**What is Social Emotional Learning:** Social and emotional learning (SEL) is an integral part of education and human development. SEL is the process through which all young people and adults acquire and apply the knowledge, skills, and attitudes to develop healthy identities, manage emotions and achieve personal and collective goals, feel and show empathy for others, establish and maintain supportive relationships, and make responsible and caring decisions.

### *Expedition Employment with the WAY Program*

On Tuesday, October 13th, the students from Mr. Murphy's class at the RTF School had the opportunity to pilot a worksite at the OLVHS memory care home in Amherst. Students worked with group home staff and WAY Program staff to engage residents in activities to decorate the residence! Students worked with D'Youville Occupational Therapy student Marissa to make this pilot a success, as it attempted to help improve mood and reduce agitation, increase physical and mental activity, prevent behavioral problems, and promote positive changes in communication and social interaction. The program was well received by all involved, and Murph's class can't wait to go back! Thank you to everyone involved in coordinating this opportunity!

