


SURVEYOR'S CERTIFICATE

The undersigned, being a registered land surveyor authorized to practice in the State of Florida, hereby certifies that the construction of the improvements comprising The Empress, a Condominium, is substantially completed as shown on attached survey Exhibits 2 of 21 through 21 of 21, so that said survey related Exhibits 2 of 21 through 21 of 21 to the Declaration of Condominium, together with the provisions of the Declaration of Condominium describing the condominium property, is an accurate representation of the location and dimensions of the improvements shown on said survey Exhibits 2 of 21 through 21 of 21, and that the identification of each unit together with the location and dimensions of each unit and the common elements shown on said survey exhibits can be determined from these materials.


Brett Culpepper, P.L.S.
Professional Land Surveyor No. 3333
State of Florida

Date: October 21, 1988



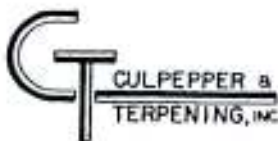
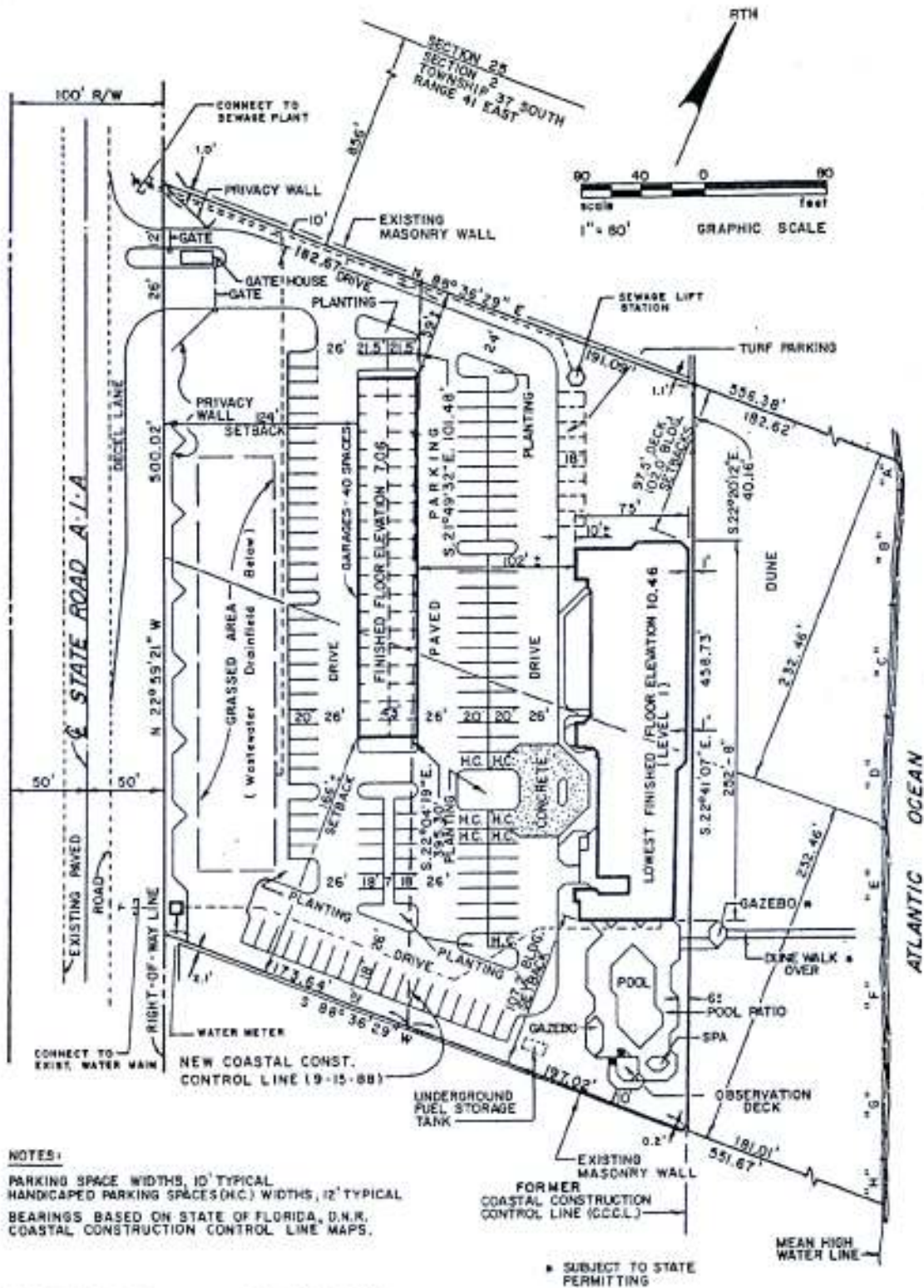
THE EMPRESS, A CONDOMINIUM

LOCATED ON A-1-A

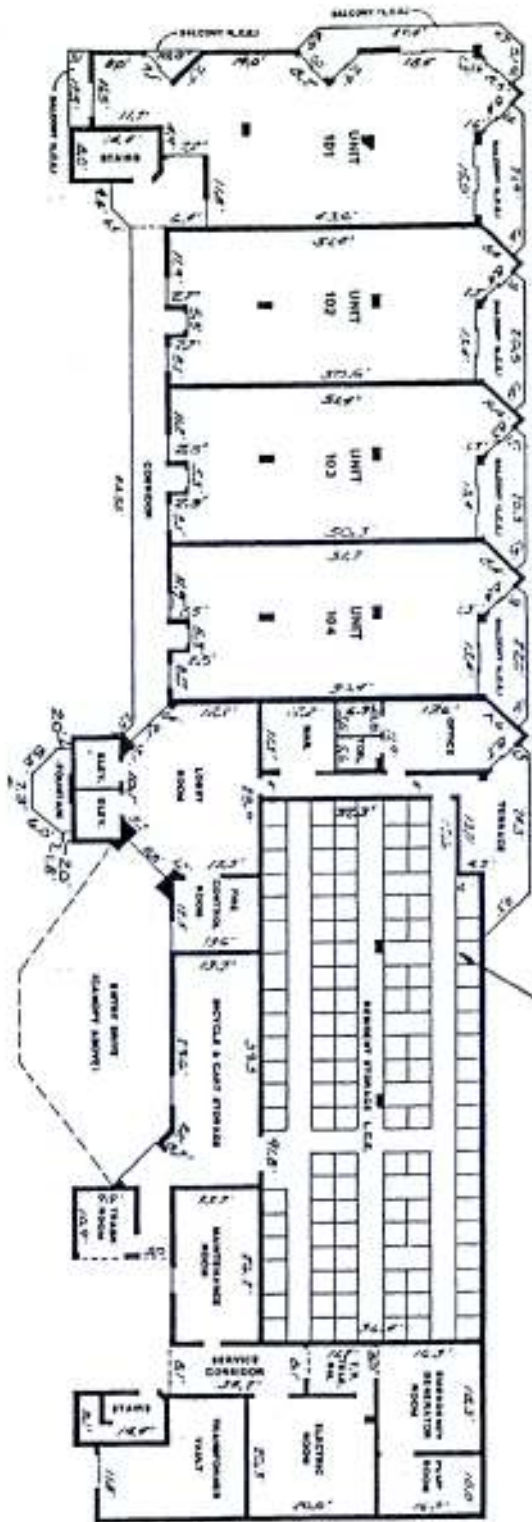
ST. LUCIE COUNTY, FLORIDA



Consulting Engineers • Land Surveyors
809 Virginia Avenue, Suite 18 • P.O. Box 1948
 Ft. Pierce, FL 33482 • (305) 484-2527



Consulting Engineers • Land Surveyors
805 Virginia Avenue, Suite 15 • P.O. Box 1449
FL Pierce, FL 33482 • (305) 484-3537



NOTES:
 1. ALL DIMENSIONS ARE APPROXIMATELY ENGINEERED BY
 2. THE ARCHITECT HAS NOT BEEN ADVISED AS TO THE EXISTENCE OR
 3. LOCATION OF ANY UTILITIES OR OTHER SERVICES. THE ARCHITECT
 4. ASSUMES NO LIABILITY FOR THE ACCURACY OF THE INFORMATION
 5. PROVIDED HEREIN. THE ARCHITECT'S RESPONSIBILITY IS LIMITED
 6. TO THE DESIGN OF THE BUILDING AS SHOWN ON THESE PLANS.
 7. THE ARCHITECT DOES NOT WARRANT THE ACCURACY OF THE
 8. INFORMATION PROVIDED HEREIN. THE ARCHITECT'S LIABILITY IS LIMITED
 9. TO THE DESIGN OF THE BUILDING AS SHOWN ON THESE PLANS.

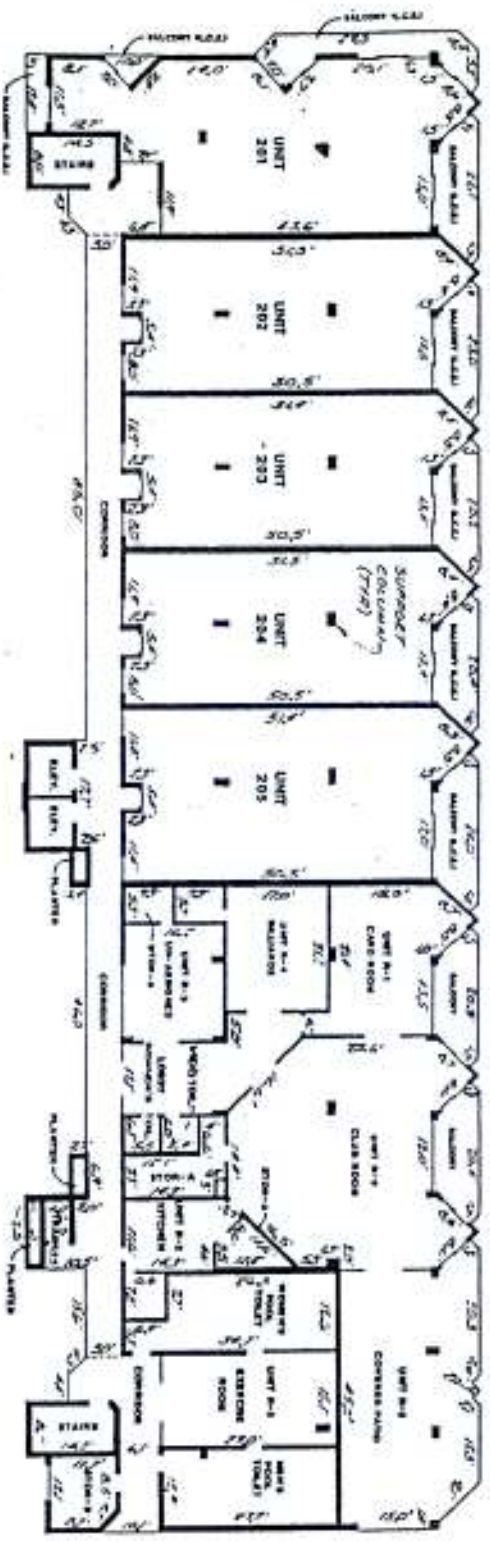
DATE: 10/15/2011
 BY: [Signature]



GRAPHIC SCALE (IN FEET)
 0 1 2 3 4 5 6 7 8 9 10

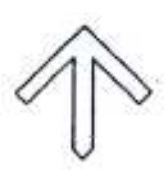
THE EMPRESS & CONDOMINIUM		DATE: 10/15/2011
FIRST FLOOR PLAN		



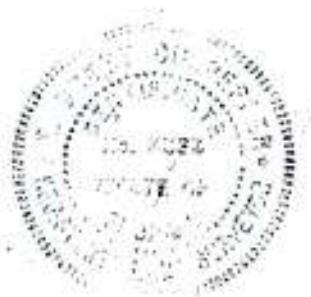


NOTES:
 1. ALL DIMENSIONS ARE APPROXIMATE.
 2. THE ARCHITECT IS NOT RESPONSIBLE FOR THE ACCURACY OF THE DIMENSIONS OF THE BUILDING OR THE CONTENTS OF THE PLAN.
 3. THE ARCHITECT IS NOT RESPONSIBLE FOR THE ACCURACY OF THE DIMENSIONS OF THE BUILDING OR THE CONTENTS OF THE PLAN.
 4. THE ARCHITECT IS NOT RESPONSIBLE FOR THE ACCURACY OF THE DIMENSIONS OF THE BUILDING OR THE CONTENTS OF THE PLAN.

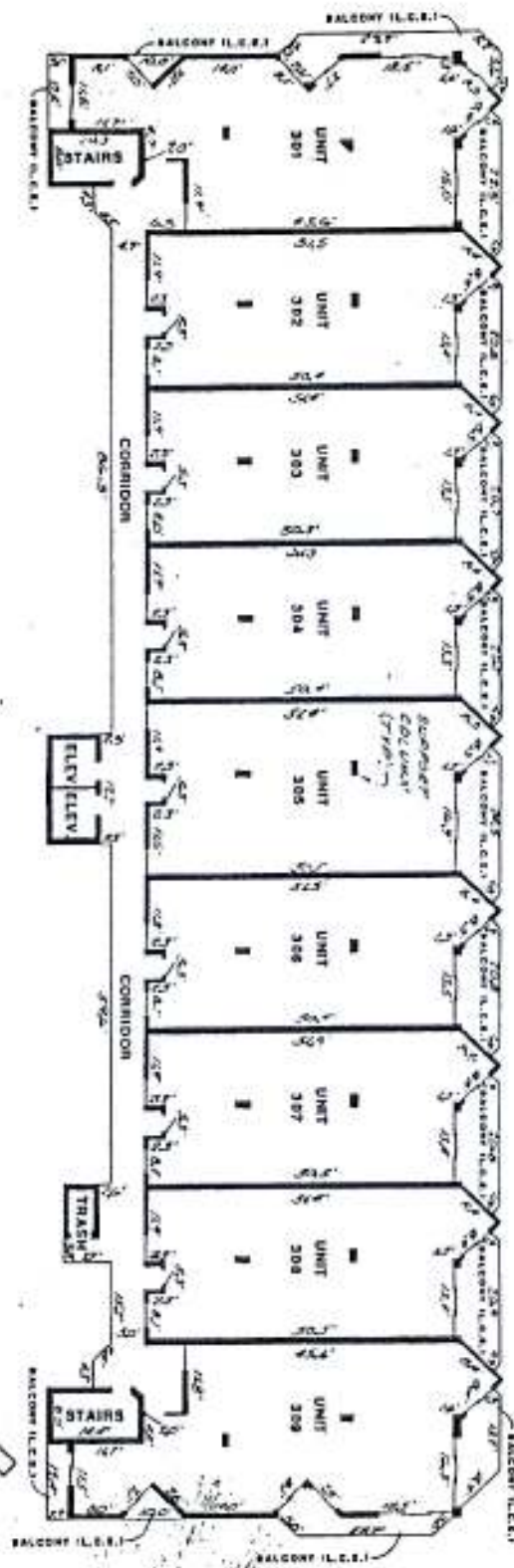
DATE: 10/10/2010
 DRAWN BY: [Name]
 CHECKED BY: [Name]



SCALE: 1/8" = 1'-0"
 DRAWING SHOULD BE READ IN THIS ORIENTATION



THE EMPRESS & CONDOMINIUM		DATE: 10/10/2010
SECOND FLOOR PLAN		

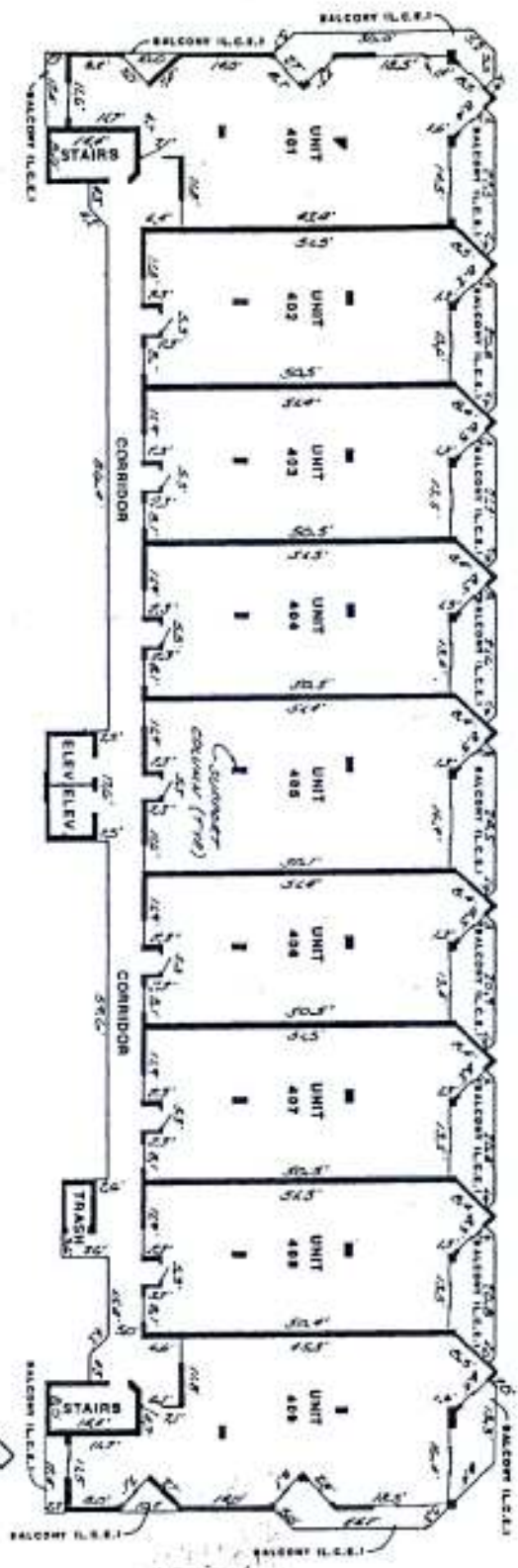


NOTES:
 1. THIS AND ARCHITECTURAL ENGINEERING BY
 2. ELEMENTS DEFINED AS COMMON ELEMENTS AS
 3. REFERRED TO IN SECTION 1.1 OF THE DECLARATION OF
 4. CONDOMINIUM, SUCH COMMON ELEMENTS MAY
 5. INCLUDE BUT NOT BE LIMITED TO: PLUMBING,
 6. ELECTRICAL, MECHANICAL, ELEVATOR, ETC.



DATE: 11/11/98
 ALL DIMENSIONS SHOWN IN SECTION 1.1 OF THE
 DECLARATION OF CONDOMINIUM SHALL CONTROL.

THE EMPRESS,		CONDOMINIUM	
THIRD FLOOR PLAN		DATE: 11/11/98	

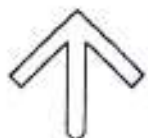
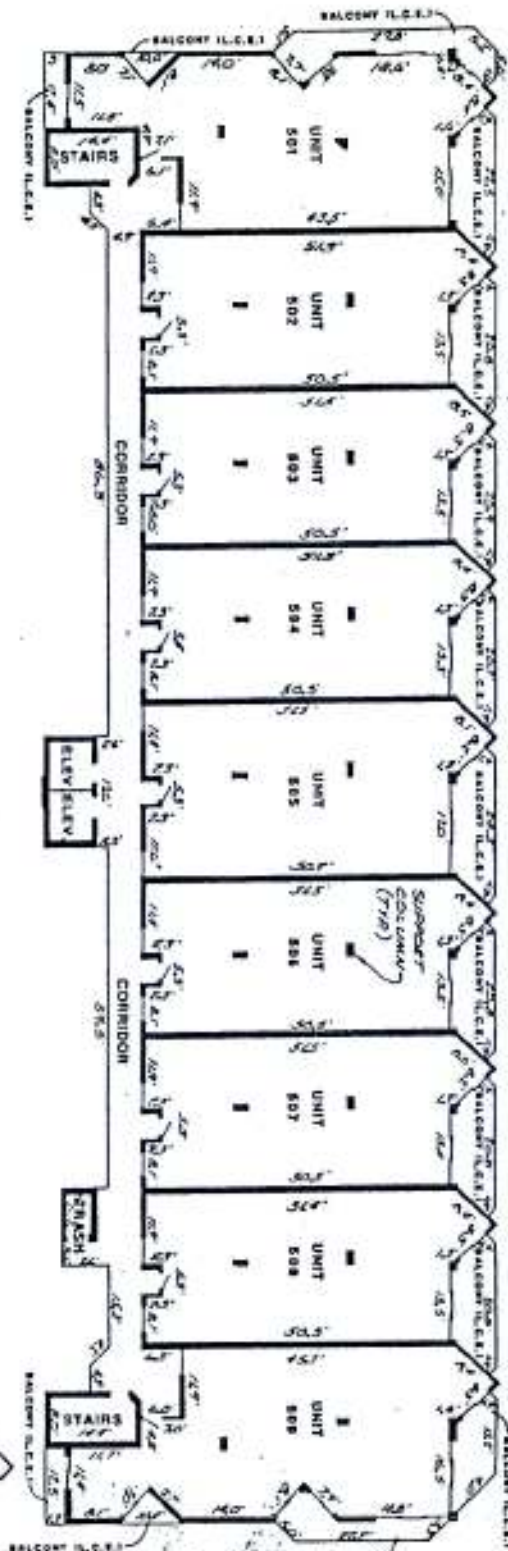


NOTE: UNITS ARE APPROXIMATELY REPRESENTED BY SHADINGS APPEARING AS DIMENSIONED ELEMENTS AS SHOWN IN EXHIBIT "A" OF THE DECLARATION OF CONDOMINIUM. SUCH COMMON ELEMENTS MAY INCLUDE BUT NOT BE LIMITED TO: PLUMBING CHASES, ELECTRICAL CHASES, ETC.



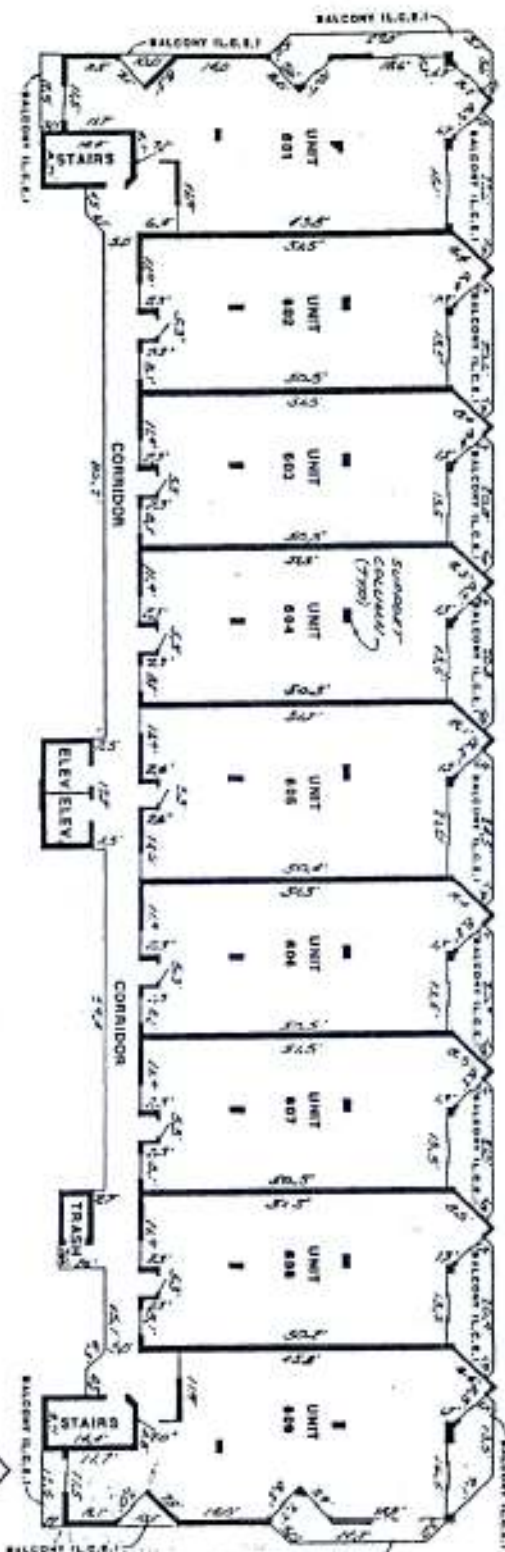
NOTE: ALL DIMENSIONS SHOWN ARE APPROXIMATE AND NOT TO SCALE.

THE EMPRESS, # CONDOMINIUM		SHEET 6 OF 21
FOURTH FLOOR PLAN		



NOTE:
 ALL DIMENSIONS SHOWN ARE APPROXIMATE
 AND SHOULD BE USED AS A GUIDE ONLY.

THE EMPRESS, # CONDOMINIUM		APR. 20, 2000
FIFTH FLOOR PLAN		



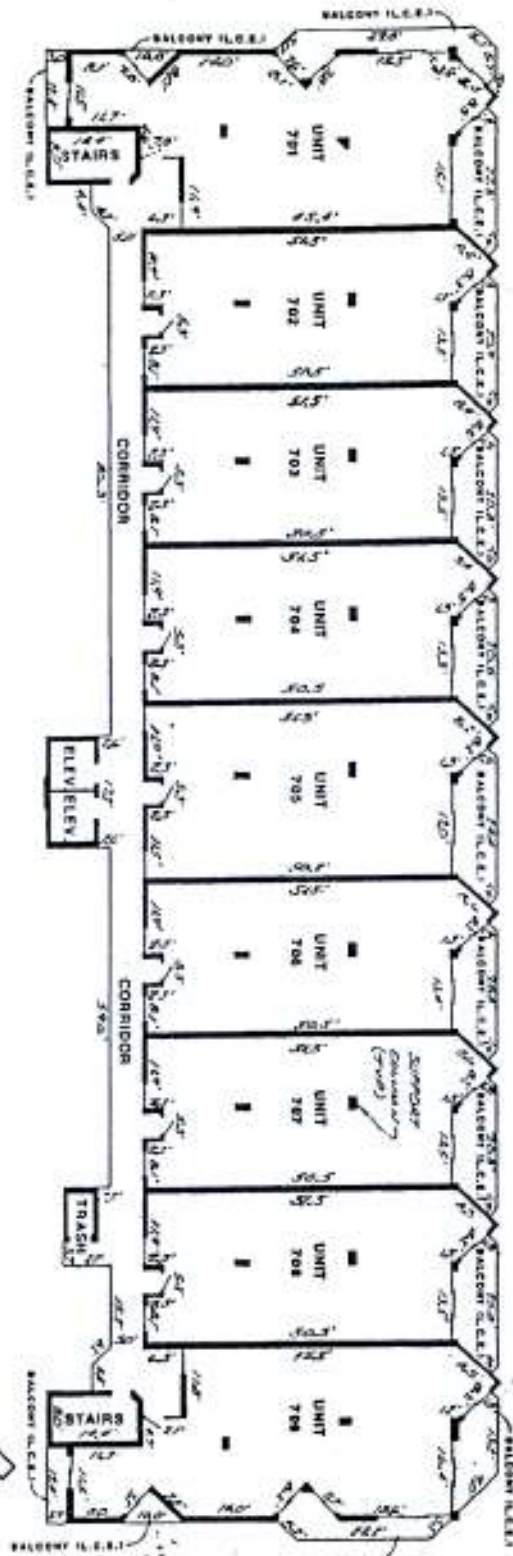
NOTE:
 UNITS ARE ADDITIONALLY ENGINEERED BY
 ENGINEERS DATED AS COMMON ELEMENTS AS
 DEFINED IN ARTICLE 3. OF THE REGULATION OF
 CONDOMINIUM. SUCH COMMON ELEMENTS MAY
 SPECIFICALLY INCLUDE STRUCTURAL COMPONENTS,
 PLUMBING CHASES, ELECTRICAL CHASES, ETC.



SEE ARCHITECT'S NOTES FOR THE UNIT
 AND COMMON ELEMENTS FOR THE UNIT
 AND COMMON ELEMENTS FOR THE UNIT

THE EMPRESS, # CONDOMINIUM		APP. PLANS
SIXTH FLOOR PLAN		





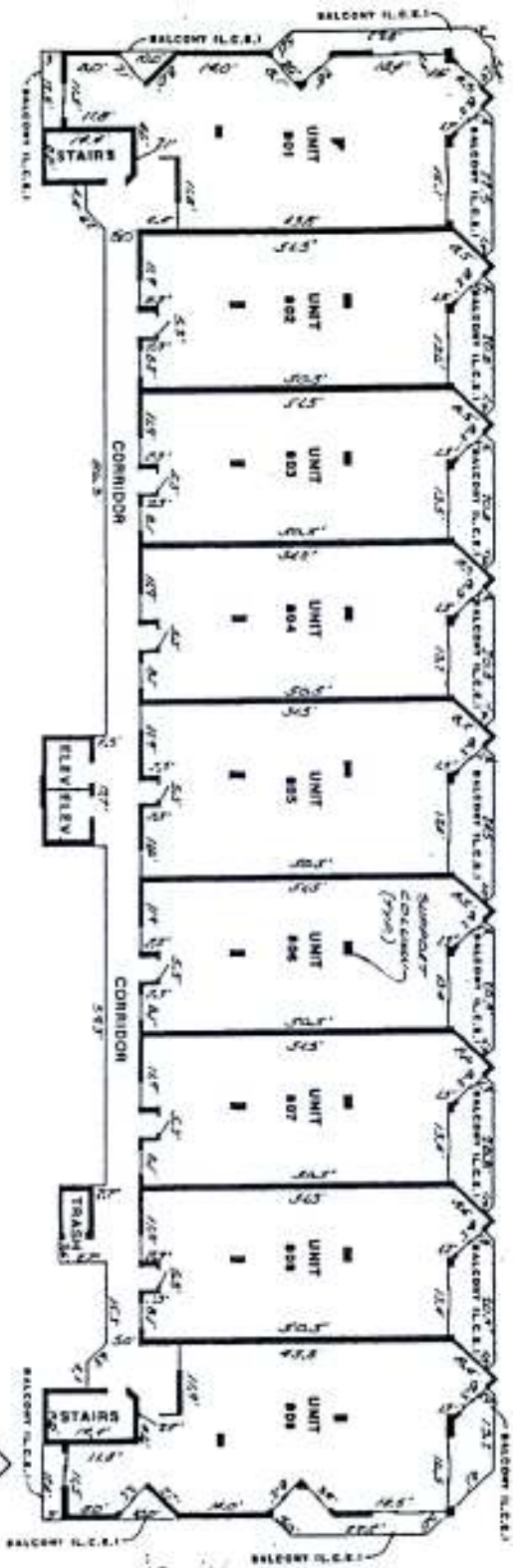
NOTE: ALL APERTURES ENCOUNTERED BY PLANNERS BEING AS COMMON ELEMENTS AS PERMITTED UNDER THE REGULATION OF CONDOMINIUM ACT. COMMON ELEMENTS MAY INCLUDE BUT NOT BE LIMITED TO: PLUMBING CHASES, ELECTRICAL CHASES, ETC.



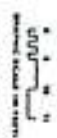
NOTE: ALL APERTURES ENCOUNTERED BY PLANNERS BEING AS COMMON ELEMENTS AS PERMITTED UNDER THE REGULATION OF CONDOMINIUM ACT. COMMON ELEMENTS MAY INCLUDE BUT NOT BE LIMITED TO: PLUMBING CHASES, ELECTRICAL CHASES, ETC.



THE EMPRESS, A CONDOMINIUM		PLAN NUMBER
SEVENTH FLOOR PLAN		



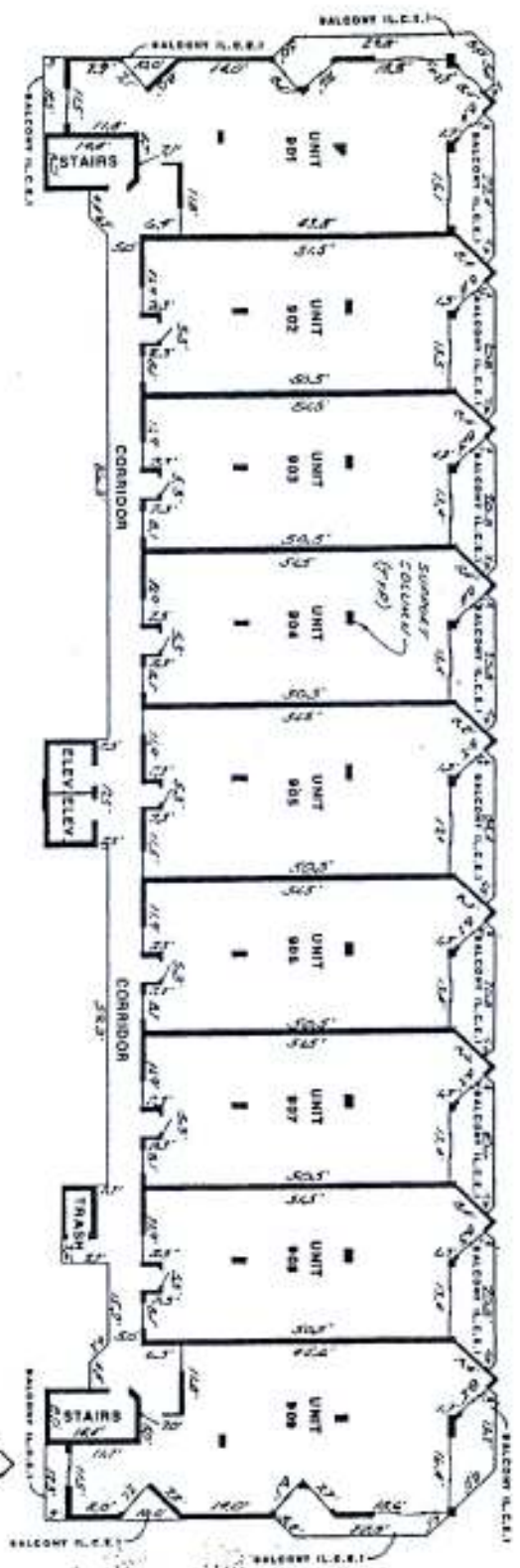
NOTE: UNITS ARE APPROXIMATELY DIMENSIONED BY SALES AGENTS BASED ON COMMON DIMENSIONS AS APPEARING IN EXHIBIT 'A' OF THE DECLARATION OF CONDOMINIUM. WITH COMMON ELEMENTS MAY SOMETIMES INCLUDE STRUCTURAL SUPPORT COMPONENTS, PLUMBING CHASES, ELECTRICAL CHASES, ETC.



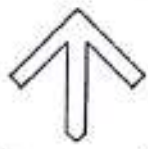
NOTE: UNITS SHOWN WITH COMMON ELEMENTS AND DIMENSIONS SHOWN IN EXHIBIT 'A' OF DECLARATION OF CONDOMINIUM.



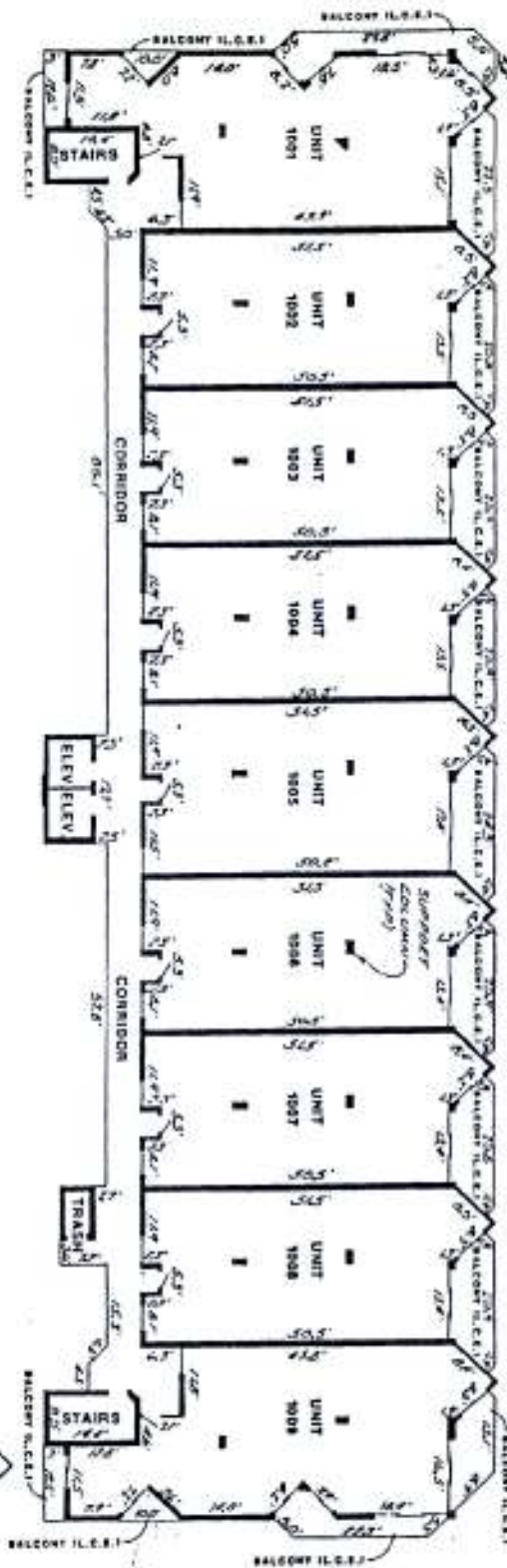
THE EMPRESS CONDOMINIUM	
EIGHTH FLOOR PLAN	
DATE: 10/23/01	BY: [Signature]



NOTE:
 THIS PLAN IS NOT TO BE CONSIDERED AS A CONTRACT DOCUMENT. IT IS FOR INFORMATION ONLY. THE ARCHITECT'S RESPONSIBILITY IS LIMITED TO THE DESIGN OF THE BUILDING AS SHOWN ON THIS PLAN. THE ARCHITECT DOES NOT WARRANT THE ACCURACY OF THE INFORMATION CONTAINED HEREIN. THE ARCHITECT'S LIABILITY IS LIMITED TO THE DESIGN OF THE BUILDING AS SHOWN ON THIS PLAN. THE ARCHITECT DOES NOT WARRANT THE ACCURACY OF THE INFORMATION CONTAINED HEREIN. THE ARCHITECT'S LIABILITY IS LIMITED TO THE DESIGN OF THE BUILDING AS SHOWN ON THIS PLAN. THE ARCHITECT DOES NOT WARRANT THE ACCURACY OF THE INFORMATION CONTAINED HEREIN.



THE EMPRESS, A CONDOMINIUM		DATE: 01/19/98
NINTH FLOOR PLAN		



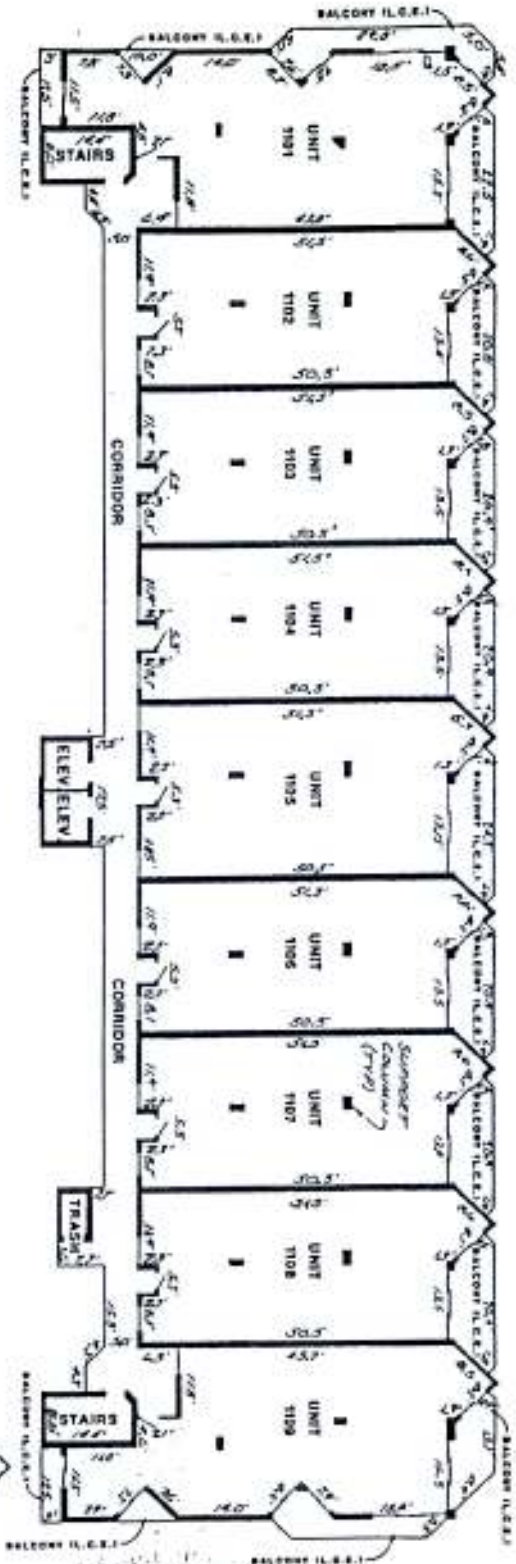
NOTE: UNIT AND APPOINTMENT ENCUMBRANCES BY STATEMENTS PERTAINING TO COMMON ELEMENTS AS SET FORTH IN EXHIBIT 'A' OF THE DECLARATION OF CONDOMINIUM, WHICH COMMON ELEMENTS MAY TYPICALLY INCLUDE STRUCTURAL, SUPPORT, COMMONS, FINISHING, STAIRS, ELECTRICAL, CONDUITS, ETC.

NOTE: ALL DIMENSIONS UNLESS OTHERWISE SPECIFIED ARE IN FEET AND INCHES. DIMENSIONS SHOWN ARE TO THE CENTER OF WALLS UNLESS OTHERWISE SPECIFIED.



THE EMPRESS, A CONDOMINIUM		10TH FLOOR
TENTH FLOOR PLAN		



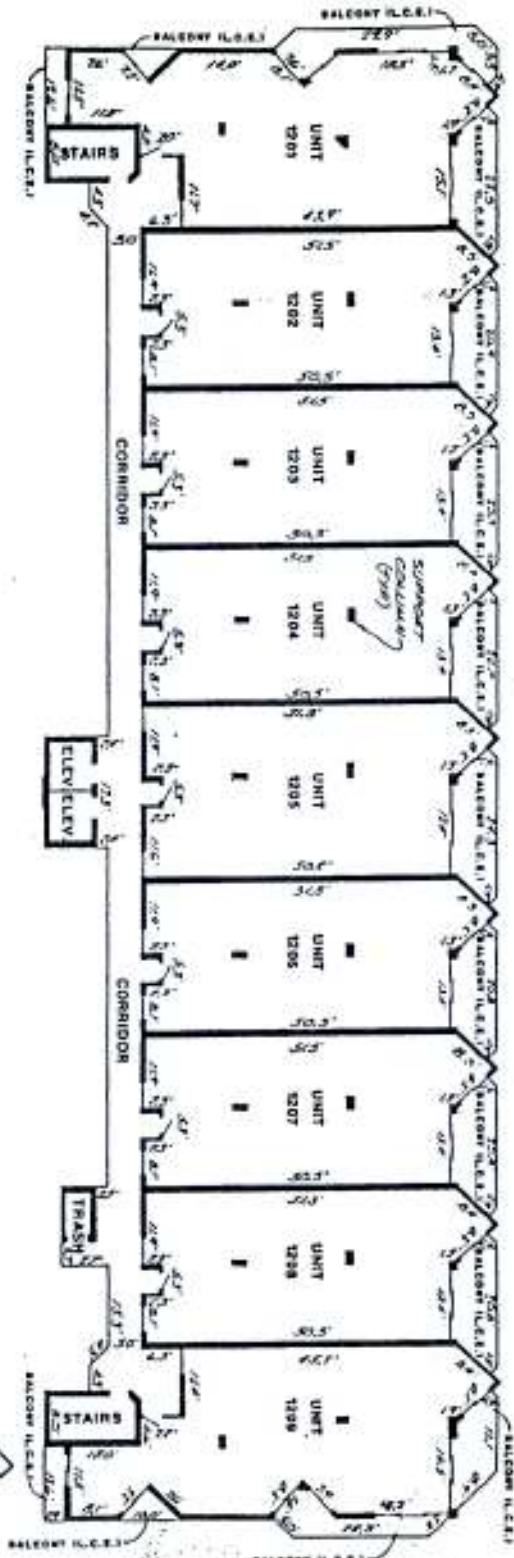


NOTES:
 1. ALL DIMENSIONS SHOWN ARE APPROXIMATE.
 2. ALL DIMENSIONS SHOWN ARE APPROXIMATE.
 3. ALL DIMENSIONS SHOWN ARE APPROXIMATE.
 4. ALL DIMENSIONS SHOWN ARE APPROXIMATE.
 5. ALL DIMENSIONS SHOWN ARE APPROXIMATE.
 6. ALL DIMENSIONS SHOWN ARE APPROXIMATE.
 7. ALL DIMENSIONS SHOWN ARE APPROXIMATE.
 8. ALL DIMENSIONS SHOWN ARE APPROXIMATE.
 9. ALL DIMENSIONS SHOWN ARE APPROXIMATE.
 10. ALL DIMENSIONS SHOWN ARE APPROXIMATE.

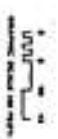


NOTES:
 1. ALL DIMENSIONS SHOWN ARE APPROXIMATE.
 2. ALL DIMENSIONS SHOWN ARE APPROXIMATE.
 3. ALL DIMENSIONS SHOWN ARE APPROXIMATE.
 4. ALL DIMENSIONS SHOWN ARE APPROXIMATE.
 5. ALL DIMENSIONS SHOWN ARE APPROXIMATE.
 6. ALL DIMENSIONS SHOWN ARE APPROXIMATE.
 7. ALL DIMENSIONS SHOWN ARE APPROXIMATE.
 8. ALL DIMENSIONS SHOWN ARE APPROXIMATE.
 9. ALL DIMENSIONS SHOWN ARE APPROXIMATE.
 10. ALL DIMENSIONS SHOWN ARE APPROXIMATE.

THE EMPRESS, # CONDOMINIUM		SEE PLAN	
ELEVENTH FLOOR PLAN			



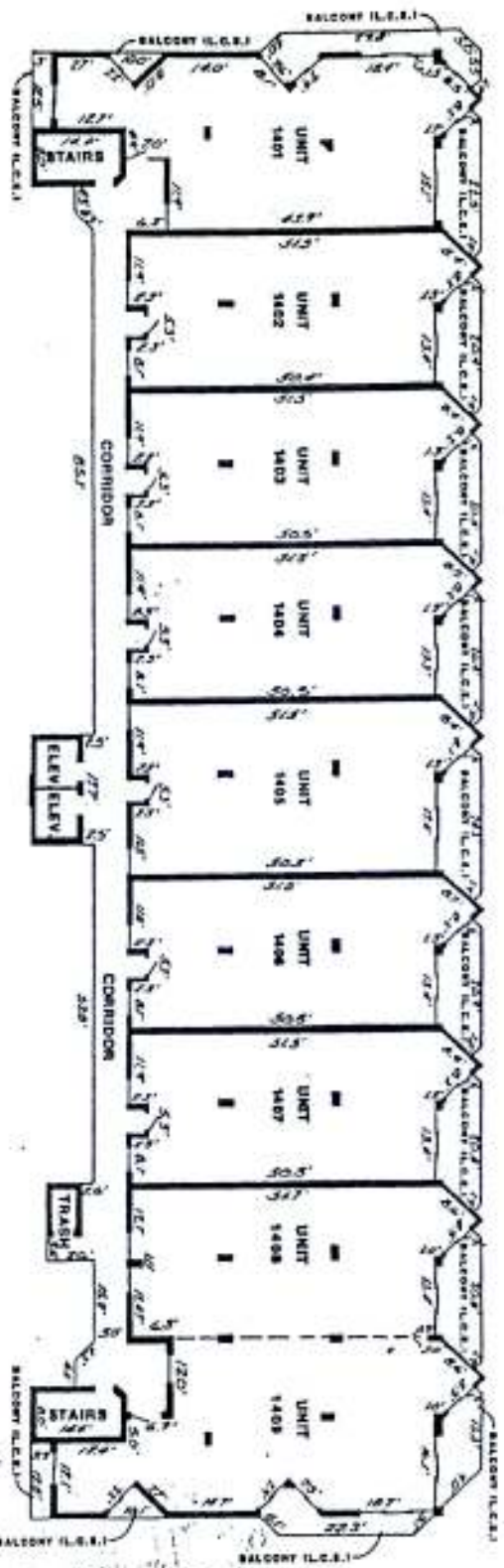
NOTE:
 WITH AND ADDITIONAL ENCUMBRANCES BY
 AGENTS AS SHOWN IN PLANS AS
 SHOWN IN SECTION 'A' OF THE DECLARATION OF
 CONDOMINIUM, SUCH COMMON ELEMENTS ARE
 TO BE MAINTAINED BY THE UNIT OWNERS
 PURSUANT TO THE DECLARATION OF CONDOMINIUM,
 AS AMENDED, DATED FEBRUARY 1970.



NOTE:
 ALL DIMENSIONS SHOWN IN THIS PLAN ARE IN FEET.
 ALL DIMENSIONS SHOWN IN THIS PLAN ARE IN FEET.



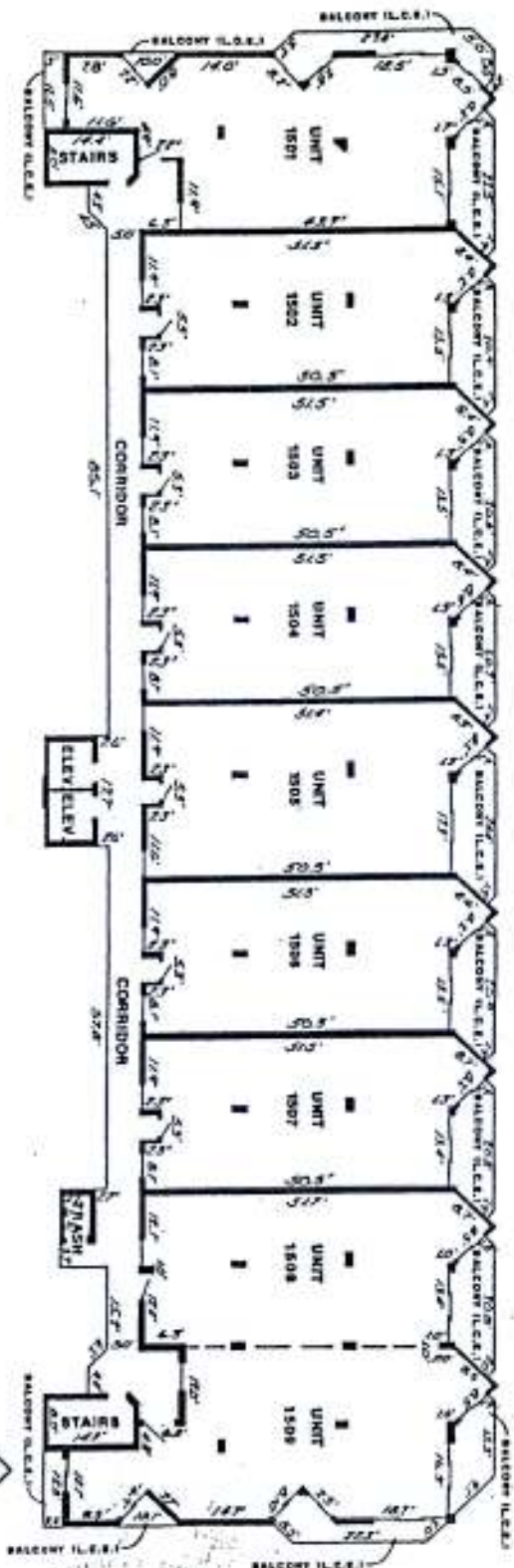
THE EMPRESS, # CONDOMINIUM		DATE: 12/1/70
TWELFTH FLOOR PLAN		



NOTE:
 PARTS AND APPOINTMENTS RECOMMENDED BY
 ENGINEERS NOTING AS COMMON ELEMENTS AS
 NOTED ON SHEET 'V' OF THE DECLARATION OF
 COVENANTS, SUCH COMMON ELEMENTS ARE
 SPECIFICALLY INCLUDED STRUCTURAL SUPPORT COMPONENTS,
 PLUMBING CHASER, ELECTRICAL CHASERS, ETC.



THE EMPRESS, # CONDOMINIUM		NOV. 21, 1988
FOURTEENTH FLOOR PLAN		



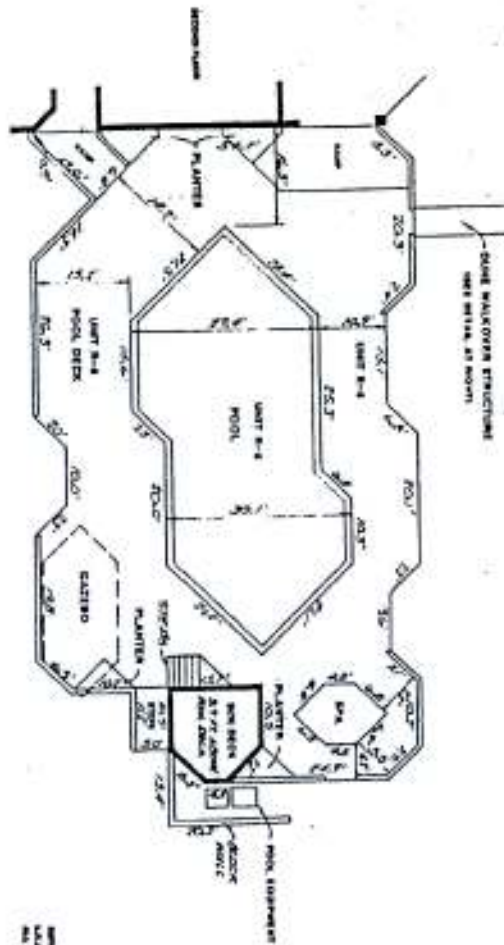
NOTE:
 UNITS ARE ADDITIONALLY ENCUMBERED BY
 PARTMENTS DEFINED AS COMMON ELEMENTS AS
 DEFINED IN ARTICLE V OF THE DECLARATION OF
 CONDOMINIUM. SUCH COMMON ELEMENTS MAY
 TYPICALLY INCLUDE STRUCTURAL SUPPORT COMPONENTS,
 PLUMBING, CHASE, ELECTRICAL, CORRIDOR, ETC.



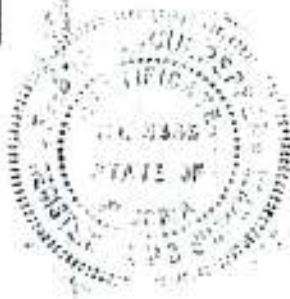
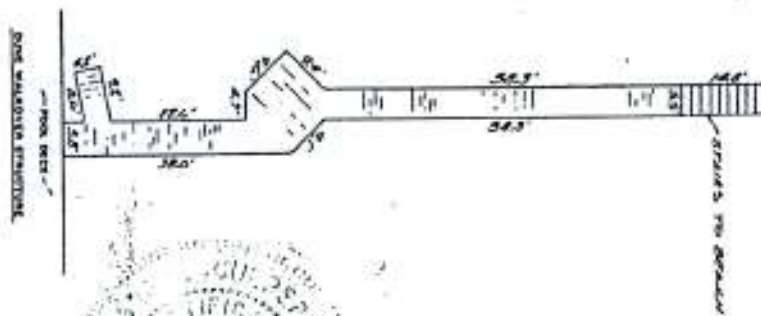
NOTE:
 ALL PARTS LIGHTS COMMON ELEMENTS,
 ALL DIMENSIONS SHOWN IN THIS PLAN ARE AS SHOWN.



THE EMPRESS, * CONDOMINIUM		444 N. 14th St.
FIFTEENTH FLOOR PLAN		

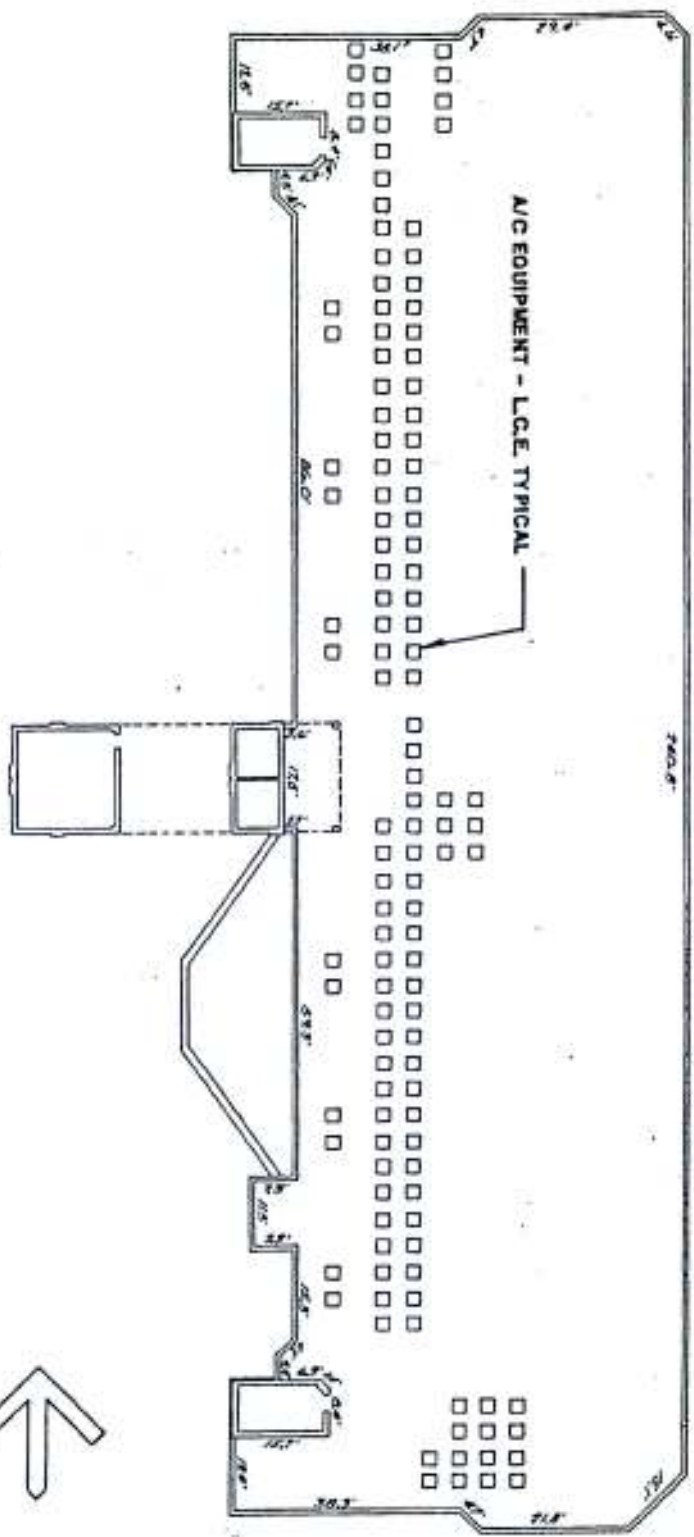


NOTE: ALL DIMENSIONS UNLESS OTHERWISE SPECIFIED ARE IN FEET.



SECTION THROUGH POOL DECK

THE EMERALD, A CONDOMINIUM		SHEET 17
POOL PLAN		



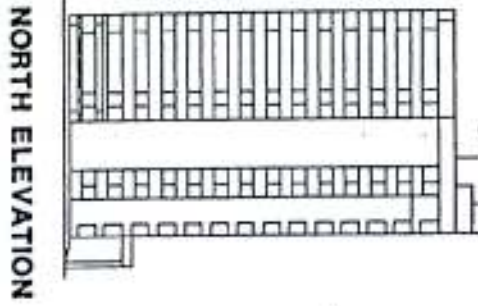
L.C.E. DENOTES LIMITED COMMON ELEMENT
 ALL DIMENSIONS SHOWN HEREON ARE AS BUILT



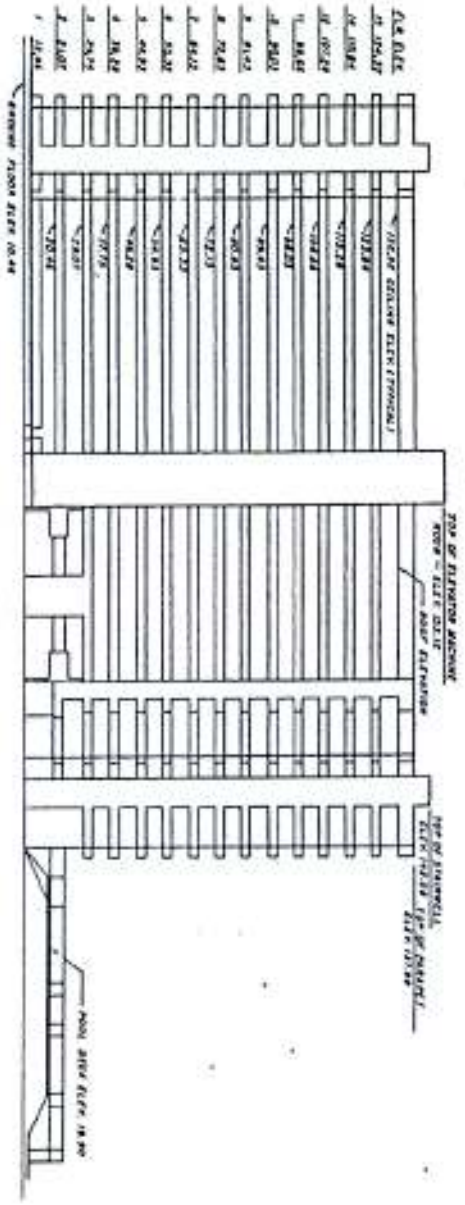
AS SHOWN, SHALL BE PERMITTED



THE EMERALD & CONDOMINIUMS		DATE PLUMB
FLOOR PLAN		

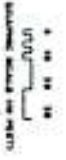


NORTH ELEVATION



WEST ELEVATION

NOTE : ALL ELEVATIONS SHOWN ARE AS BUILT
 ALL ELEVATIONS ARE BASED ON N.G.V.D. DATUM
 THERE IS NO THIRTEENTH FLOOR



THE EMPRESS A CONDOMINIUM		DATE PLOTTED 12/18/18
ELEVATIONS		SHEET 18 OF 18

