

SLA Water Quality Report

(for August 12, 2023)

Silver Lake Watershed Commission (SLWC).

Leaves. The SLAWQ team shared policies from the Lake Erie Watershed Protection Alliance (LEWPA) (see link below) with the SLWC and they agreed to look into the leaves-in-the-lake issue.

<http://mansfieldny.org/pdfs/2019/LEWPA%20Yard%20Waste%20Brochure.compressed.pdf>

SLAWQ suggests the SLA arrange for fall '23 yard waste disposal options similar to those in fall '22.

The Town of Castile Board is also looking into the yard waste issue.

The SLAWQ team suggests the following language be put on our web and Facebook sites and shared with residents through the SLA tract directors:

Keep Yard Waste Out of Silver Lake

- *The Silver Lake Association urges you to responsibly manage your yard waste.*
- *Nutrients in yard waste, including nitrogen and phosphorus, are released into water during decomposition. Algae and aquatic vegetation feed on these nutrients and can grow very rapidly when there are large quantities of nutrients.*
- *Composting is the optimal method for handling yard waste.*
- *Yard waste disposal to satellite municipal dumpsters is another option.*
- *Please, never dispose of your yard waste into Silver Lake.*
- SLA Board Vote

Dredging. The SLWC reported that the Water Resource Agency funds arrived so the effort to develop a comprehensive plan for Silver Lake can move forward. The study area includes the lake, Lake District, and the Outlet. The study scope will include everything from water quality and watershed issues to economic development, tourism, and access to the lake along with anything you can think of that benefits/impacts Silver Lake. The study is expected to take 1.5-2 years to complete and will result in a comprehensive plan. Once this plan is completed implementation grants will be sought. A broad-based committee will be established and

populated over the next several months. A consultant is also being identified. There will be SLA representation on this committee. This fits in with the Dredging Project.

Walker Rd Bridge. Town of Perry Supervisor Jim Brick reported that the Walker Rd bridge replacement is planned for spring '24.

Monarch Butterfly, Milkweed & Pollinator Planting. Many plants distributed during the May '23 SLA meeting have done well.

Examples include the following:



Prizes

Best-in-Show: tba

Frank's Choice: tba

Best Start: tba

Honorable Mention: tba (2x)

WNY Partnership for Regional Invasive Species Management (PRISM). The SLAWQ team has worked with WNY PRISM and its Director Andrea Locke for many years. PRISM staff have visited Silver Lake several times over the past 10 years and they have executed several lake-wide surveys.

Andrea informed us that the new DEC Region 9 Aquatic Invasive Species (AIS) Coordinator plans to survey Silver Lake this year. DEC will not perform a full survey (they use a point intercept method, including rake tosses, that is time intensive), but hope to get a partial survey completed. A report will follow.

Our most common invasive aquatic plants (macrophytes) are curly leaf pondweed (left) and eurasian milfoil (right). Both have been in Silver Lake for decades.



Japanese Knotweed (JK) Spraying. We are seeing significant JK die off two (2) months after our first '23 follow-up spraying.

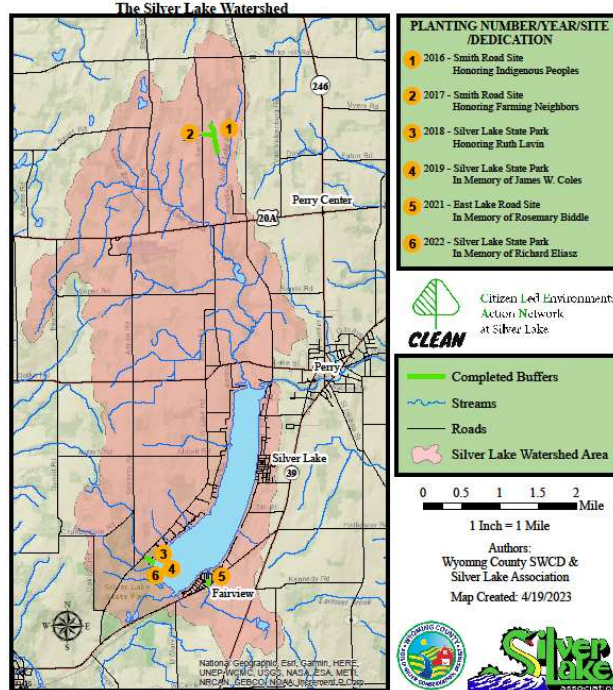
Improved Communications. The SLAWQ team has worked to expand and improve communication efforts with members and other stakeholders. Examples include timely postings on the SLA and CLEAN web sites and Facebook pages (shout outs to Michelle Hess and Joe Caputo) and a full page article in the June 22, 2023 *Perry Herald* (p. 7) (shout out to Lee Loomis).

We hope to continue working with the *Perry Herald* on an annual series of articles calling out our plans, in progress efforts, and accomplishments with one article coinciding with the SLA / CLEAN Golf Tournament advertising and sponsorship campaigns.



CLEAN @ SILVER LAKE PLANTING SITES

Why native plantings in the Silver Lake Watershed are important:
 - Mitigate erosion and control nutrient influx from tributaries that lead into Silver Lake.
 - Protect drinking water to Village and Towns of Perry, Town of Castle, Village of Mount Morris, Village of Leicester and Letchworth State Park.
 - Encourage teamwork with SLA, CLEAN, and Wyoming County Soil and Water Conservation District, our farm neighbors, and other stakeholders to improve lake health.



The SLAWQ team received approval from Letchworth State Park to install a display case (left) and informational planting site map (right) at the Silver Lake State Park. We hope to complete this task in Sept '23.

Potential Planting Sites for '23, '24, and '25. The Wyoming County Soil and Water Conservation District (WCSWCD) staff are working with landowner(s) to secure appropriate permissions.

SLA / CLEAN Golf Tournament. The 2023 Tournament, Banquet, and Raffle were held at The Club at Silver Lake on Saturday, July 22, 2023. The weather was perfect and feedback was very positive.

The '23 Tournament sold out early (22 teams; 88 players) and the basket raffle and luncheon were well attended. The number of business sponsors was down in comparison to previous years, but we still did reasonably well financially.

A sincere THANK YOU to every “player”, each volunteer, sponsor, and/or all basket contributors!

And a special THANK YOU to Joe Caputo, Karen Norton, and Bonnie Bright!

Mark your calendars, the '24 Tournament is scheduled for Saturday, July 20, 2024.

Raffle Basket Donations by Year

<u>Year</u>	<u>No. of Baskets</u>
2017	26
2018	32
2019	37
2020	not held – COVID
2021	38
2022	32
2023	32

Business Sponsors

Platinum Sponsors (\$200)

Burt Gellmon / Wolfpack Multisports
Creative Food Ingredients
Mandon Building Systems
Silver Lake Institute

Gold (\$100)

Cathleen Volk, CPA

Silver (\$100)

Michelle Hess / Silver Lake She Serpents
McClurg Chrysler Dodge Jeep
Perry Market Place

Hole (\$50)

Anonymous (2x)
Donohue Insurance
Michelle Hess / Silver Lake She Serpents
Penguin Multimedia
Silverlaken
Tompkins Bank

Anonymous Donors Sponsored These Organizations / Vendors

Butter Meat
CLEAN@SilverLake
Family Furniture
Love of Flour
Thrive Fitness

Citizens Statewide Lake Assessment Program (CSLAP). The 2022 Silver Lake Report has been available on-line since spring '23.

The SLAWQ team has completed five (5) of the eight (8) sample rounds for the '23 campaign.

PCHS Activities. There are no updates. Please consult earlier Reports.

DEC Big Panfish Initiative (BPI). Please stay informed by visiting the BPI web site:

<https://www.dec.ny.gov/outdoor/124966.html>

Harmful Algae Blooms (HAB). Please remember that all HAB sightings, reporting, and updates are found at NYHABS web site:

<https://nysdec.maps.arcgis.com/apps/webappviewer/index.html?id=ae91142c812a4ab997ba739ed9723e6e>

Please stay up-to-date on HABs by checking this web site as often as you wish. You can also use this site to easily compare Silver Lake to other lakes in NYS.

Silver Lake Water Level. Remember that the Village of Perry (VoP) maintains a camera at the Silver Lake Outlet damn site. The link to this camera is:

<https://villageofperry.com/departments/water-sewer/source-of-water/lake-water-level/>

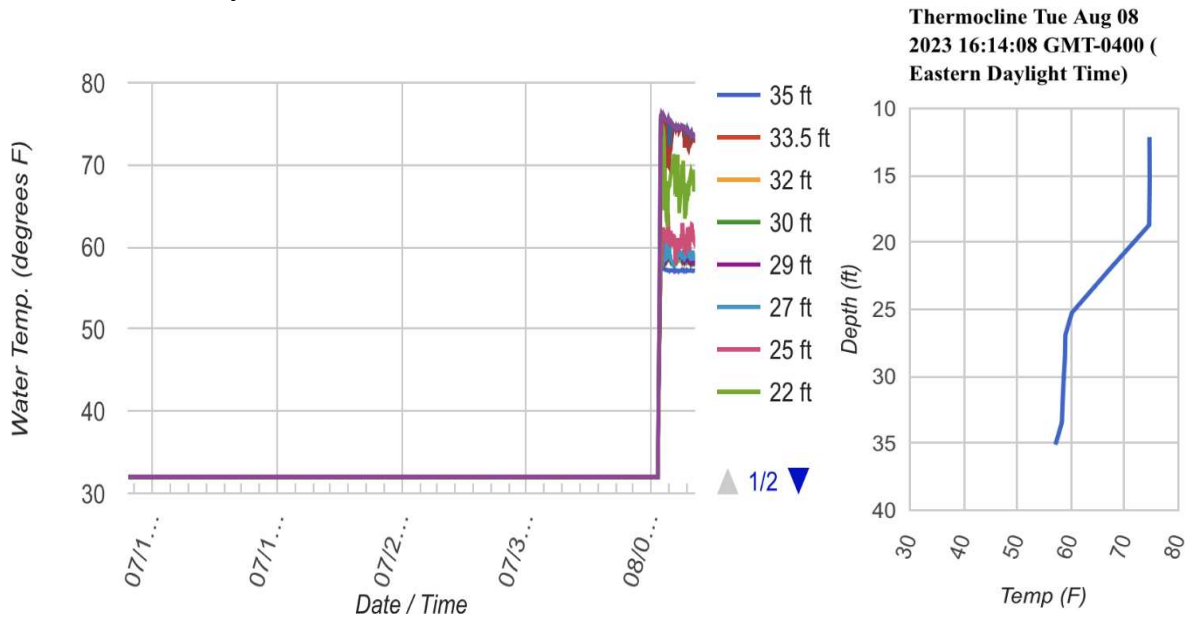
Please stay up-to-date on the lake water level from anywhere by checking this site.

Temperature Array. The Silver Lake temperature array has been successfully rebuilt, relocated, and reinstalled. A BIG shout out to Rob Ritz and Karl Hanafin for designing and constructing the new, more robust array. Rob and Karl also installed the new system at its new location.

Data from the new array can be seen at the following web site:

<https://karl.hanafins.com/silver-lake-thermocline-data---station-1>

Example Temperature vs. Time vs. Depth data (left) and single time thermocline data (right) from the new array are shown below:



The next several weeks will see the new system being more fully calibrated, tested, and assessed. You can follow along.

The new temperature array is designed to accurately record depth- and time-dependent data from the lake at 15 minute time intervals throughout the year. These data are used to observe in-lake mixing events / 'turn over' in real time. In the warmer summer season, lake-wide mixing events are often precursors to algae blooms (nutrients from sediment in the lake sediment + delivery to the lake surface + sun light = algae growth).

Watercraft Inspection Steward. The steward, Will Parker, visited us at last month's SLA meeting. He will continue his Friday-Monday, 8:00AM-6:30PM schedule through Labor Day Weekend (Sept 1st - 4th).

Silver Lake Sewer System. The SLAWQ team will visit the VoP Waste Water Treatment Plant on Aug 23, 2023. Our goal is to learn more about the water system in our area and explain the SLAWQ team's efforts to improve the health and vitality of Silver Lake.

Volunteering During the Letchworth Craft Show. The annual Letchworth Craft show moved to Perry in '22. This year's event will be held over the Columbus Day Weekend on October 7, 8, and 9. Please contact Tara Harding for more information and to volunteer (tara@hardingplumbing.com).

The next SLAWQ meeting is scheduled for September 8, 2023 at 4:00 pm.