



## Checking the Budget During Accounts Payable Processing

The system checks available balances to verify funding of a line item. There is an option in the General Ledger Chart of Accounts screen to specify a [summary "roll up" account as a budget check account](#) for each expenditure account. See Help Reference Library [GL-230 Summary Accounts](#).

## Account Using a Budget Check Account

This account uses a **summary account**. Budget check accounts are highlighted in **green** at the bottom of the chart of accounts screen.

Figure 1 An account that uses a Budget Check Account

## Voucher Expenditure Line Using a Summary Budget Check Account

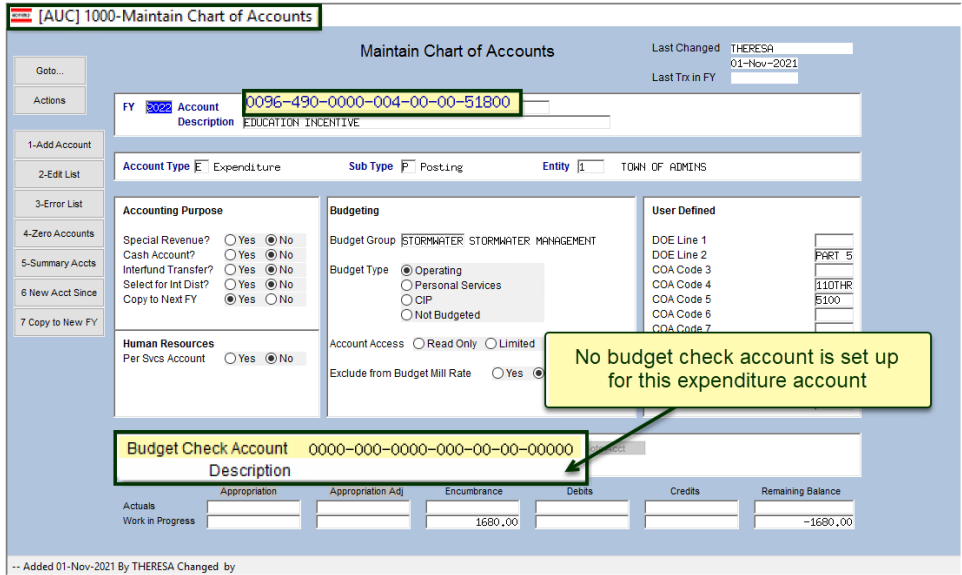
“Right click” on the account number to see the budget for the account. When this voucher is checked, the system will check the [budget check account](#) as shown in Figure 2.

Figure 2 Voucher with an expenditure account line that uses a Budget Check Account



### Account Without a Budget Check Account

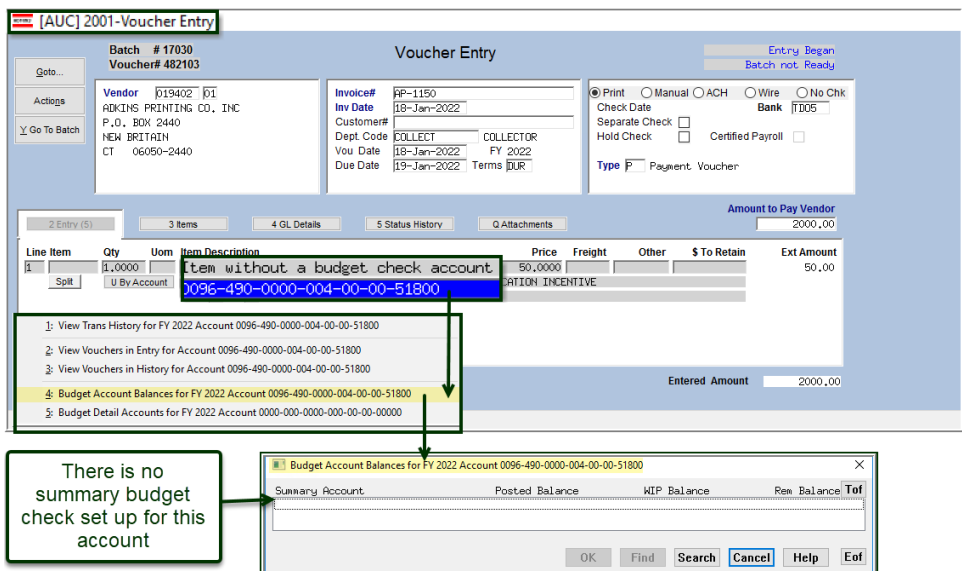
Accounts may exist *without* using a roll up or budget check account. The image in **Figure 3** is an example of an account that does not use a budget check account. Vouchers using this account will check only this expenditure account balance on any line where the account is used.



**Figure 3** Expense account that does not use a rollop – the balance of this account only will be checked

If there is no budget check account used for the expenditure accounts on the voucher, the system will check the individual expenditure account when the batch is checked.

### Voucher Expenditure Line Not Using a Summary Budget Check Account



“Right click” on the account number during voucher entry to see the options for information for the account.

**Figure 4** This account is not set up with a summary budget check account, so no account is listed here

If there is no budget check account used for the expenditure account on the voucher, the system checks the expenditure account; as shown in Figure 4, there is no summary budget account set up to check.