



# Michael's Folly




An events space available for workshops, classes, retreats, ceremonies & celebrations.



Set in an idyllic rural setting in 2.5 acres of land with unique structures; Strawbale Studio, Yurt, Tree House, woodland, moss labyrinth, Orchard & Organic kitchen garden.



**Michael's Folly, Henderson Place,  
Epping Green, Herts, SG13 8NE**



# Strawbale Studio

A unique studio space set in woodlands at Michael's Folly.

## Pricing:

- £18 per hr (with 15 mins grace to setup)
- £25 an hr for Studio in conjunction with Yurt
- Special offer for Studio with Yurt £180 a day ( from 8am to 6pm ) - including use of the surrounding Grounds



## More information:

- Caravan next door for storage
- 6.3 metres diameter
- £60 deposit upon booking (per day)
- 1 electric heater
- 1 gas heater
- 4 meditation cushions, 10 cushions
- 2 bolsters
- Yoga mats (6) & blocks (8)
- Blankets (6 wool, 6 shawls)
- Use of wind gong
- Compost Loo

# Strawbale Studio Gallery



# Strawbale Studio Gallery



# The Yurt

Magical yurt for short term rent on the enchanting grounds of Michael's Folly.

## Pricing:

- £85 for one day and night
- £155 for two days and two nights (From then on £55 a day)
- £15 an hr use

## Facilities:

- Sleeps up to 3
- 1 double mattress and two single mattresses
- 1 double duvet, 2 single duvets with pillows and sheets
- Wood burning stove
- `Cooking facilities: Two ringed gas stove
- Fridge & kitchen equipment
- £10 basket of logs
- Electricity
- Outdoor shower & compost loo
- Large firepit



## More information:

A wool-insulated furnished yurt, 16 feet in diameter that can sleep up to three people, a perfect experience for friends looking to escape the city and connect with nature. It is also a wonderful space for those seeking peace and tranquility to stay on their own.

**Yurt with Treehouse bookings - ideal for one guest to have space to themselves or if in need of an extra bed for one more person.**

# The Yurt Gallery



# The Treehouse

Enchanting tiny tree house stay

## Pricing:

- £50 for one day & one night (24hrs)
- £85 for two day' and two nights

## Facilities:

- Sleeps 1
- 1 single matresss
- 1 duvet and pillow with sheets
- Wood burner stove
- Small firepit
- Access to compost loo
- Camping gas stove
- £10 basket logs



## More information:

- A totally unique structure
- No electricity
- Battery lights inside
- Great for booking in conjunction with Yurt for extra person
- **Ideal for meditating on a Day Retreat**

# The Treehouse Gallery





# The Grounds

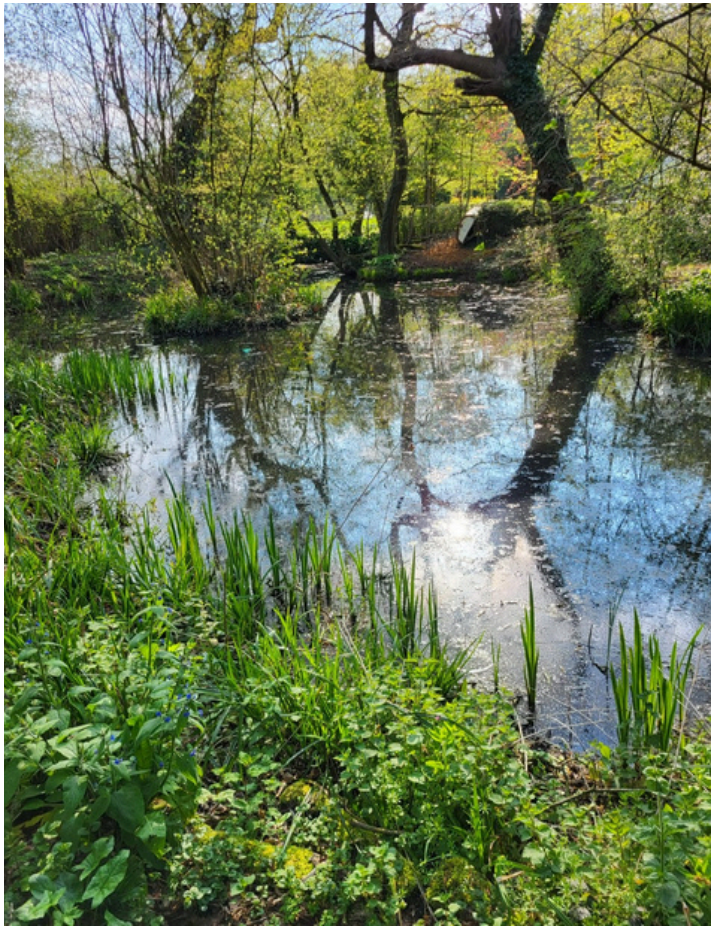
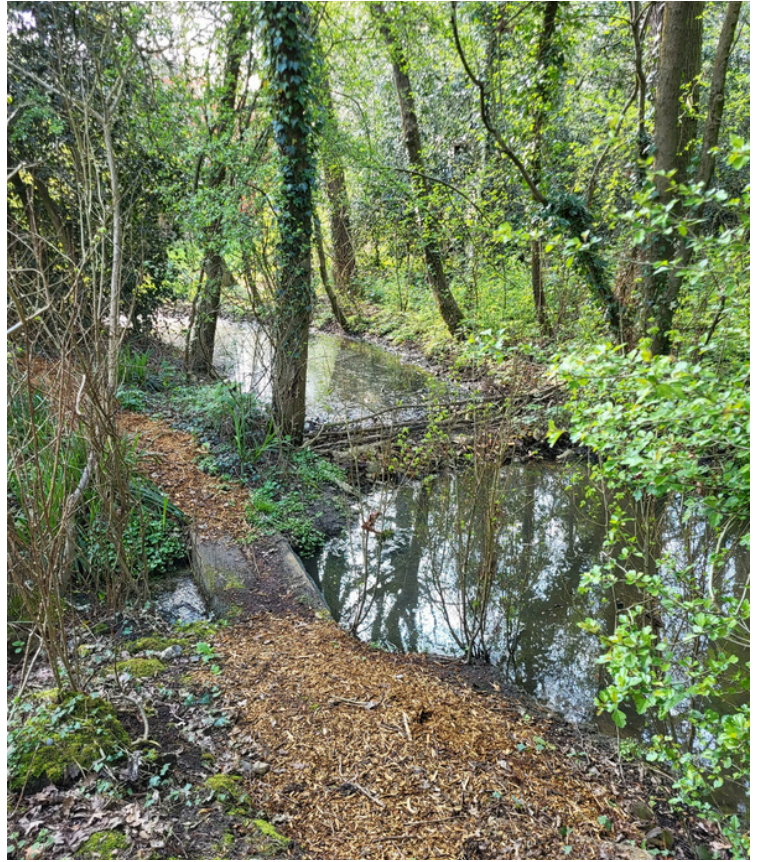
## Facilities:

- Pond with boat
- Camping space
- Compost Loo
- Outdoor shower
- Moss labyrinth
- Woodland
- Meditation area (Hazel Haven)
- Parking limited to 9 cars outside, 2 facilitator parking spaces inside grounds
- 3 tent pitches available

s



# The Grounds Gallery.



# The Grounds Gallery





# T & C's



## Deposits & Booking:

- Day bookings require £60 deposit upon booking.
- Shorter/Hourly bookings require 50% deposit

## Cancellation Policy:

- A month in advance notice for day bookings or no refund can be given in deposit.
- A week in advance notice for hourly/shorter bookings or no refund can be given on deposit.
- A week in advance notice for hourly/ shorter bookings Weekdays for Studio & Yurt or two weeks in advance for Weekends for Studio Events.

### Contact

**Fabrizia: 07837 096619**

**bitzia@bitzia.co.uk**

**www.bitzia.co.uk**

**Michael's Folly, Herts,**

**SG13 8NE**

