



REGNUM CHRISTI
CONSECRATED WOMEN

presents

Unveiling the Transformative Power of the Gaze

BECAUSE YOU *are* A MISSION!

Session 4

Refined & Radiant

*Training our gaze to
become a channel of life
and light.*

*The difference between being caught
and being discovered...*




...is in **what**
is being seen
& **how** it is
being seen



A close-up photograph of pink cherry blossoms in full bloom, set against a clear blue sky. The flowers are delicate with five petals each, and their centers are a deeper pink. The branches are dark and thin, weaving through the clusters of flowers. The overall image has a soft, romantic feel.

*Our Point of Departure:
The Gaze of God*

A woman with dark hair, wearing a green headscarf and a dark, textured dress, is kneeling on a sandy floor. She is looking down with a somber expression. The background is a wall made of large, rough-hewn stone blocks. A translucent white rectangular box is overlaid on the image, containing two lines of text in a cursive font. The lighting is soft, highlighting the woman's face and the texture of her clothing and the wall.

*Remember where you came from...
Remember how He gazed at you...*

Elements of the Salvific Gaze of God

Free and detached from being right

Stable and serene

Wounded out of love for me

Always expects the best from me

Longs for me to return the gaze

Principles to Train our Gaze

Is your gaze part of the problem
or is it part of the solution?

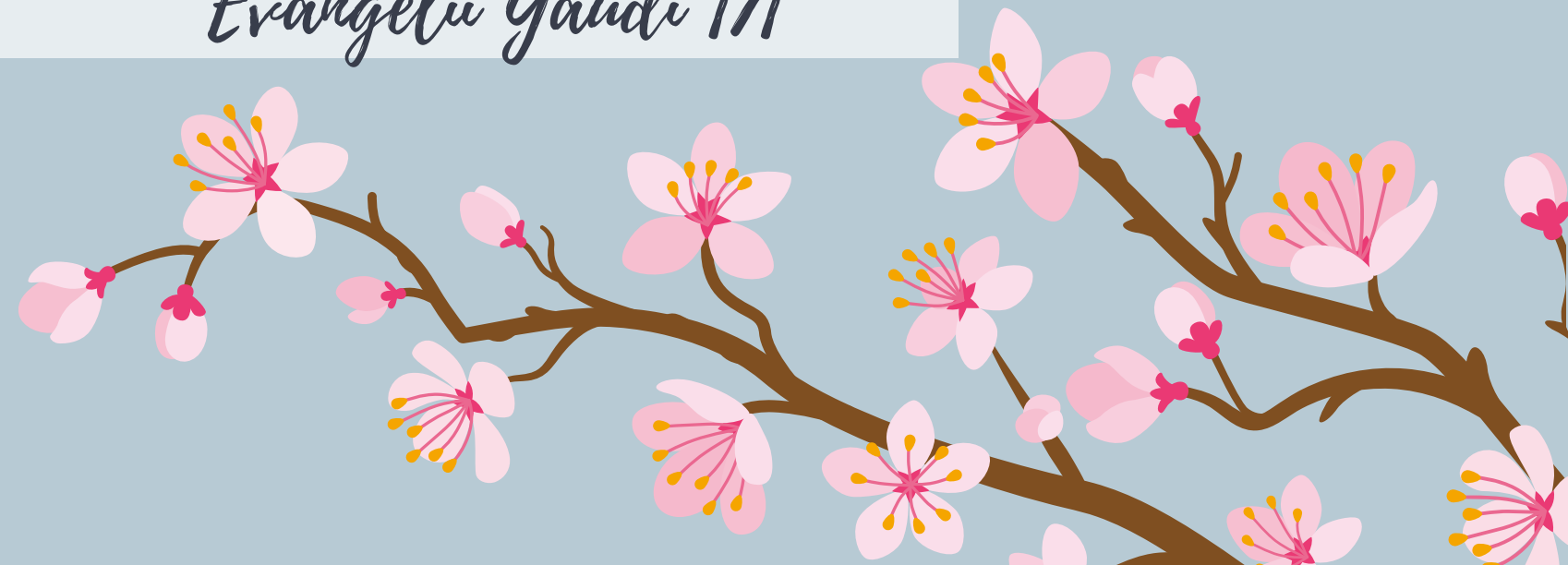




*A Gaze Free to Truly
Listen to and Welcome Others*

Listening, in communication,
is an openness of heart which
makes possible that closeness
without which genuine
spiritual encounter cannot
occur.

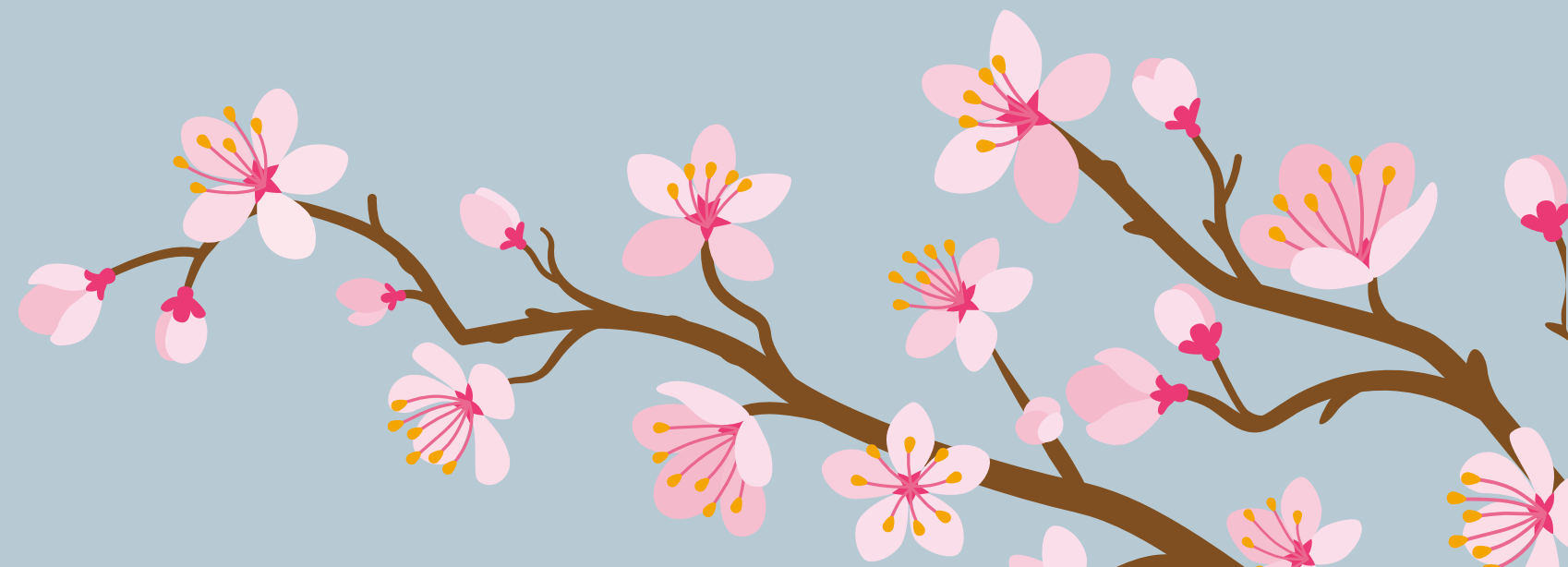
Evangelii Gaudii 171



The primacy of questions over judgments

The primacy of unity over arguments

The primacy of safety over self-defense



A close-up photograph of pink cherry blossoms in full bloom, with delicate petals and visible stamens. The flowers are clustered along a dark brown branch. The background is a clear, bright blue sky, with some blossoms in the foreground slightly out of focus, creating a sense of depth. A semi-transparent white rectangular box is centered over the image, serving as a background for the text.

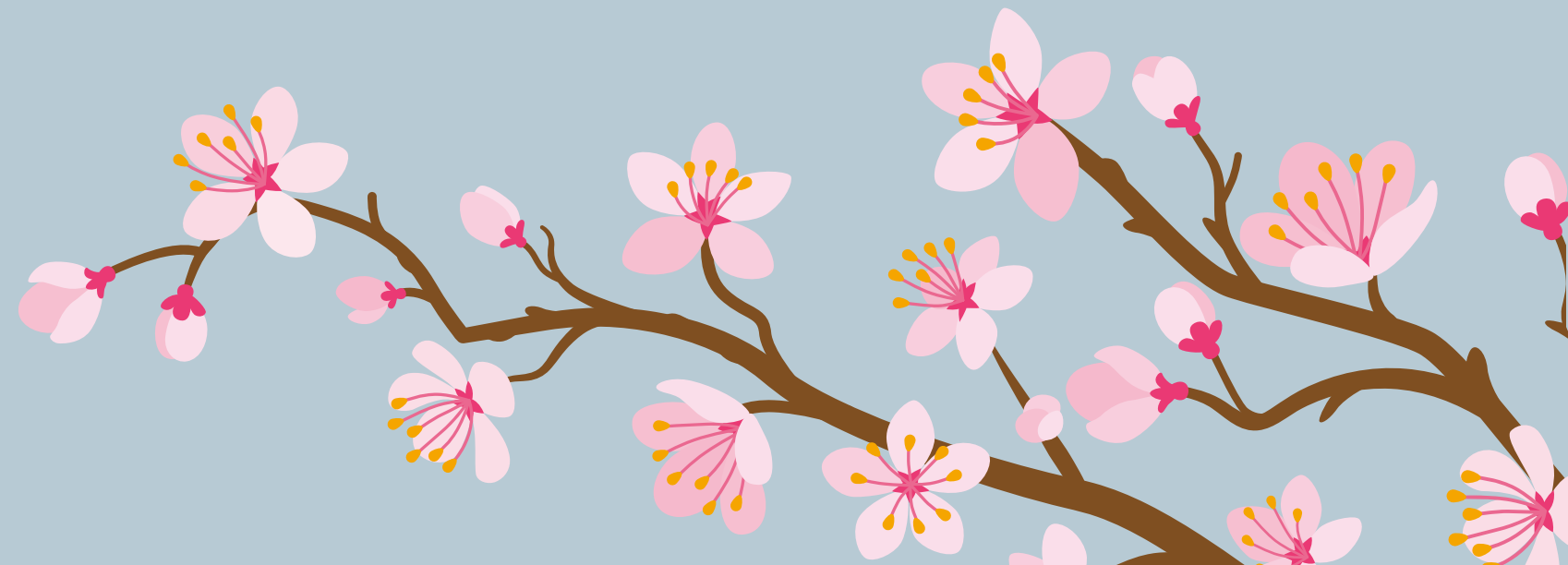
The 3D Gaze

Contemplating the painful events in your life:

1D: Through your own eyes & heart

2D: Through the other's eyes & heart

3D: Through Jesus' heart.



Questions for Small Group Discussion:

- Have I ever experienced God's gaze upon me?
- What characteristics would I use to describe His salvific gaze upon me?
- What is there in His gaze that is so healing for me?
- Which of these might He be inviting me to imitate?

