

# BUZZ in ART STUDIOS

ART & TEACHING BY JESSIE FRITSCH

## WAX & COLLAGE WORKSHOP

Learn to combine molten beeswax—a natural adhesive and preservative—with layered collage elements to create rich, textured art. We'll focus on floral and tree themes, but you're free to choose your own subject or work abstractly. You'll build depth with wax layers, embed materials for texture, and fuse everything into a cohesive, lasting surface.

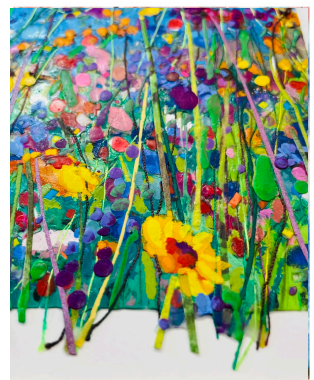
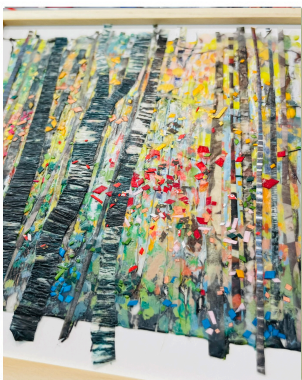
## ALL SUPPLIES ARE INCLUDED.

Guests work at their own encaustic station stocked with heated palette, wax paint brushes, carving tools, brayers, heat tools, and collage materials such as paper, pressed flowers, lace, string, and yarn. You may also bring small, flat items to personalize your work.

## WOOD PANEL SIZES-

2-Hour Workshop: 5:00 – 7:00 PM (1 small panel: 5x7" or 6x6")

4-Hour Workshop: 10:00 AM – 2:00 PM (2 small panels or 1 large 8x10")



## SCHEDULE OVERVIEW

**ARRIVAL TIME** – Arrive up to 15 minutes early to settle in. Morning: 9:45 AM | Afternoon: 4:45 PM

**WELCOME & DEMO** (15–20 min) – Introduction to encaustic safety, tools, and materials. Jessie demonstrates layering, embedding collage materials, and fusing.

**FIRST LAYERS & FUSING** (15–20 min) – Apply colored wax to your panel(s) and learn proper fusing techniques to create a strong surface.

## CREATIVE WORK TIME

2-Hour: 1 hour of guided creation. | 4-Hour: 3 hours of guided creation.

Layer collage elements into the wax, build texture, add depth, and use heat tools to unify your design.

**FINISHING & CARE** (15–20 min) – Refine the surface, add final details, learn how to care for your beeswax art, take photos, and have your work wrapped for safe travel.