

LEWISTON STATE NORMAL



P2008.8.001

ZIMMERLY AIR TRANSPORT

P2008.8.001a

ZIMMERLY

Air Transport

FLIGHT CONTRACTOR

FOR

C.A.A. - W.T.S.

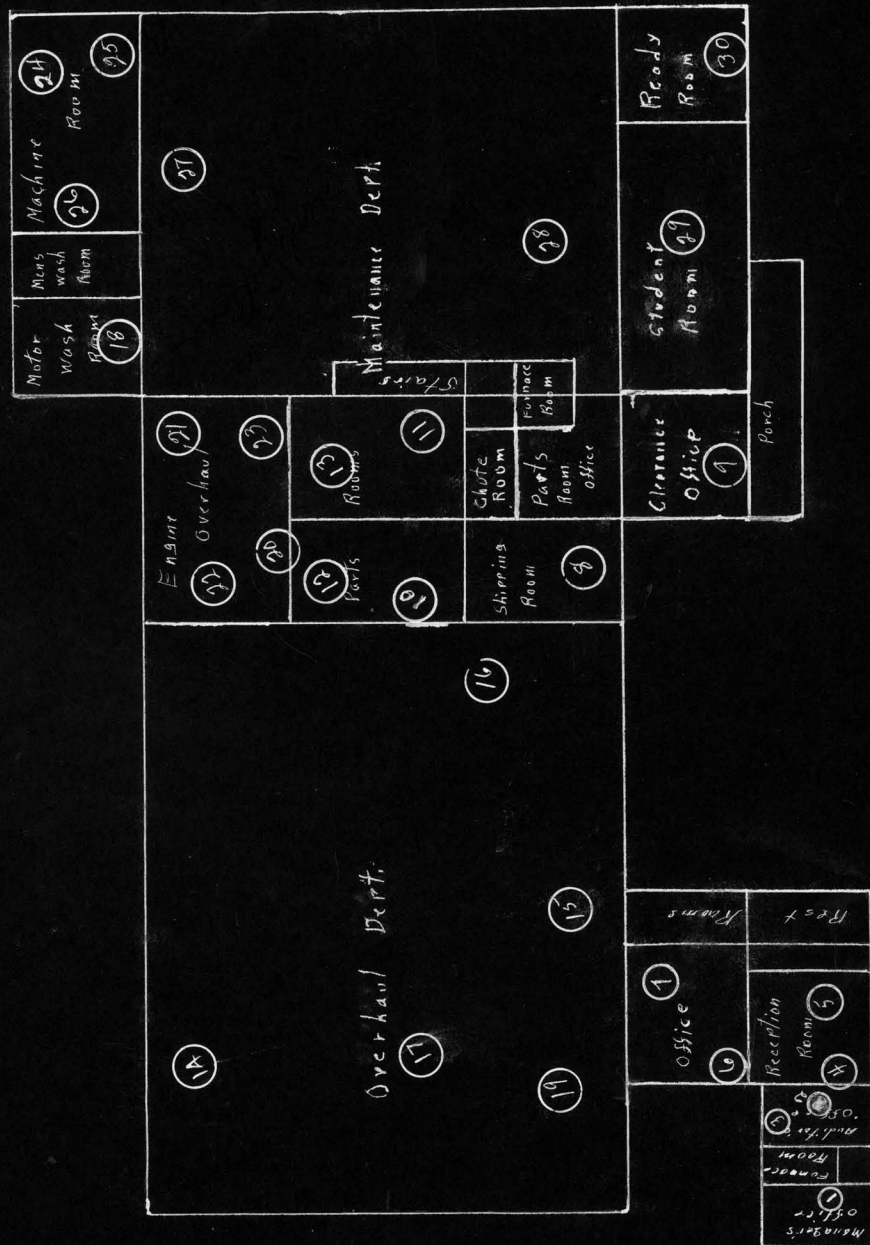
NAVY PROGRAM

★ ★ ★ ★ ★
LEWISTON IDAHO
★ ★ ★ ★ ★

Floor

Plans

Area 10,800 sq. ft.



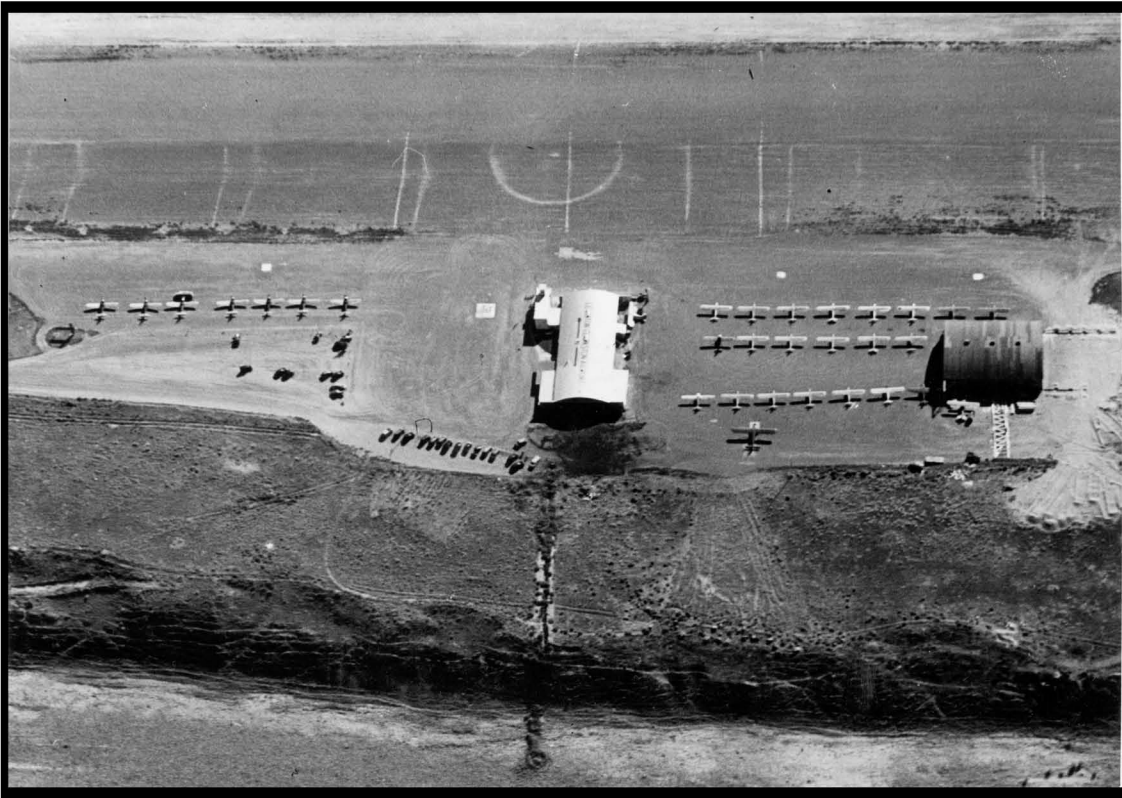
North

South



P2008.8.004

What we stand for: Speed and efficiency; and our way of life.

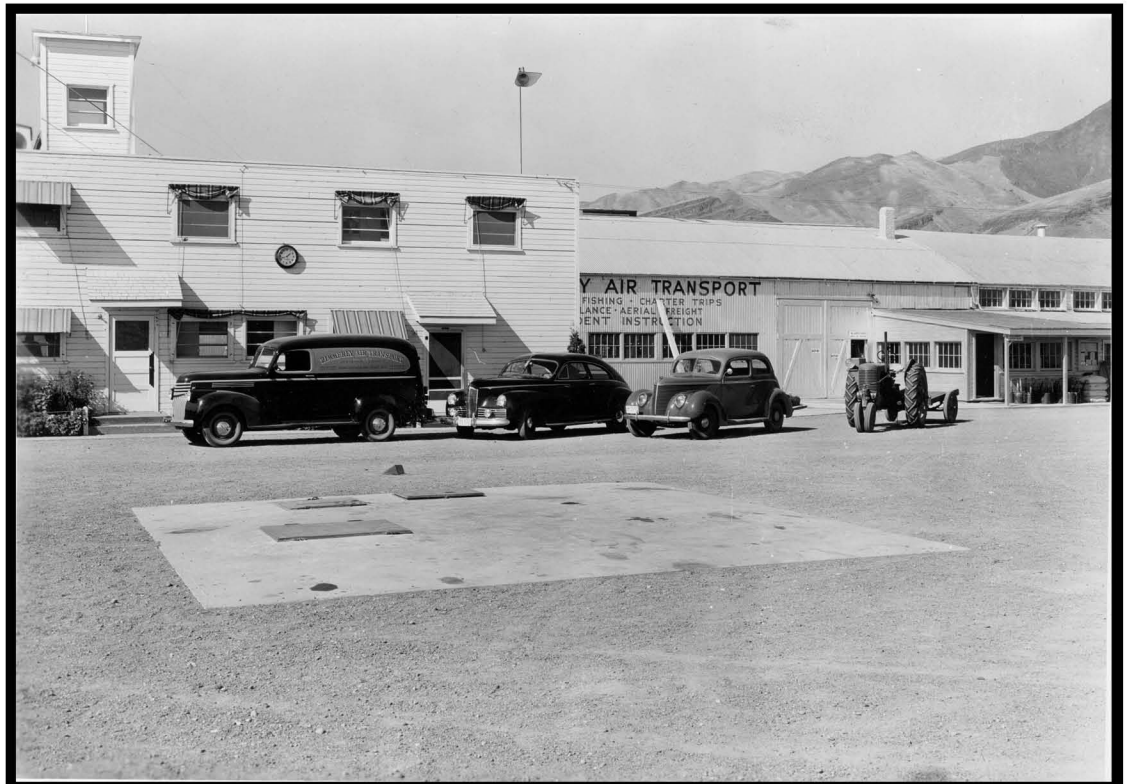


P2008.8.005

Above: This is an aerial close-up of the Airport and buildings. Between the main building and the large hangar may be seen 20 Cubs used for Elementary training. To the left of the main building is the line of Fairchild trainers used for Intermediate training. The central building houses the Main office, Clearance office, Shop, etc.. The white squares on the taxi strip are concrete surfaces for running up engines while checking mags. The large hangar to the right is newly completed and houses the greater part of the planes in view. There will be an addition of 75 feet added to the West of the hangar; part of the construction can be seen from the picture.

* * *

Below: Miscellaneous equipment used at Airport. Panel equipped for ambulance and service work. Tractor is used for handling of airplanes and maintenance of runway. The Tractor is also equipped with tow chains, fire extinguisher, and first aid kit. Automobiles are used to transport visiting pilots and conduct company business.



P2008.8.006



P2008.8.007

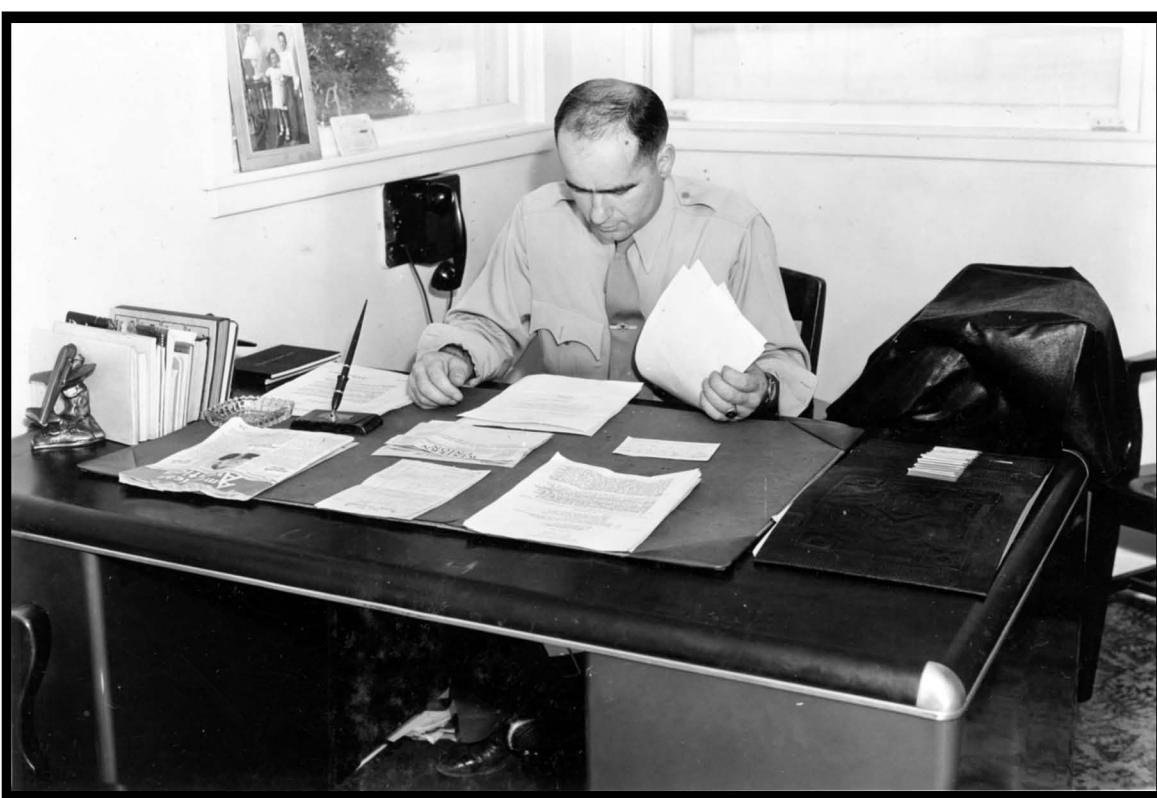
Above: This aerial view of the Airport was taken from three thousand feet. The graveled runway is 3800 feet long and 740 feet above sea level. In the foreground is the Snake River.

* * *

Below: An auxiliary field. The main runway is over 3000 feet long. The cross-runway is rarely used because of the steady prevailing wind. The approaches are excellent from every direction



P2008.8.008



P2008.8.009

Above Picture No. 1. Bert Zimmerly, Owner and Manager.

* * *

Below: Fish Lake is one of the forest service fields in the Mountains of Idaho. Moose, Elk, and Fish are plentiful. Our airplanes frequently use this and many other airports in the wilds of Idaho. Some of the runways are only 1200 feet in length.



P2008.8.010



P2008.8.011

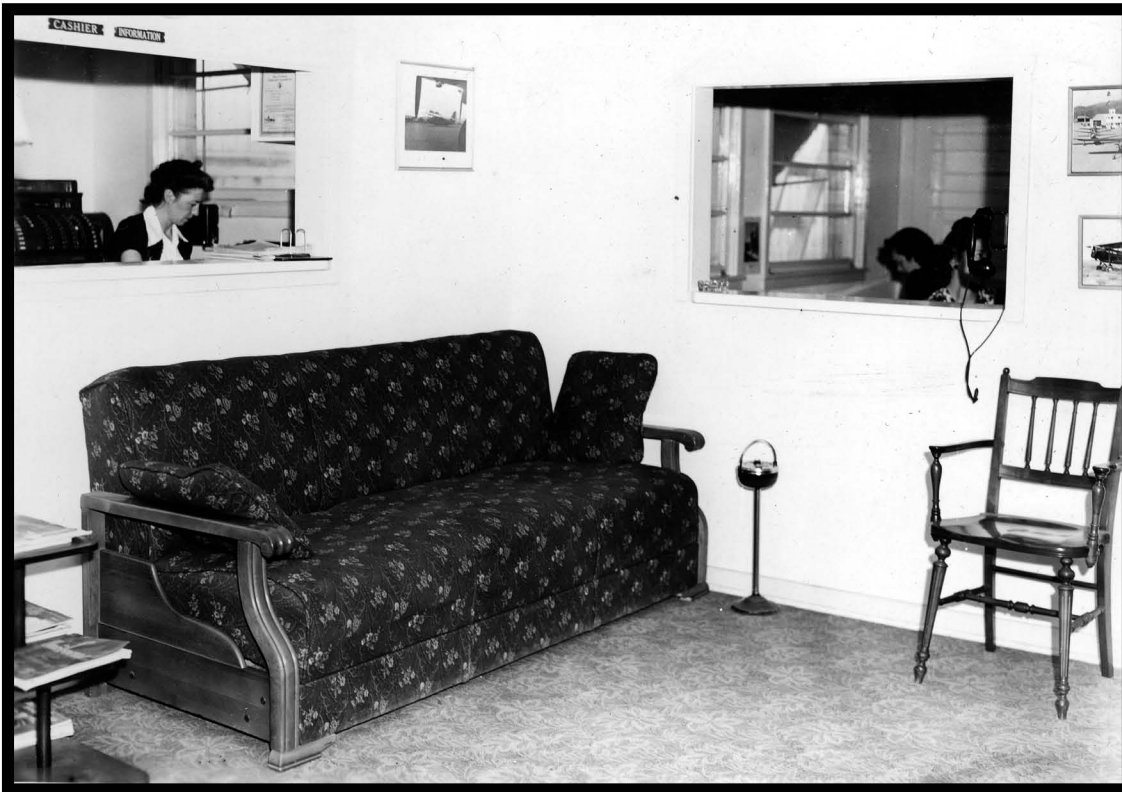
Above Picture No. 2. Mr. Nelson, Company Auditor, checking completed stage forms.

* * *

Lower Picture No. 3. Virginia Wilson, Bookkeeper, at work on company records.



P2008.8.012



P2008.8.013

Above Picture No. 4. Our reception room can seat 7 visitors or persons waiting to transact business.

* * *

Lower Picture No. 5. Another view of our reception room.



P2008.8.014



P2008.8.015

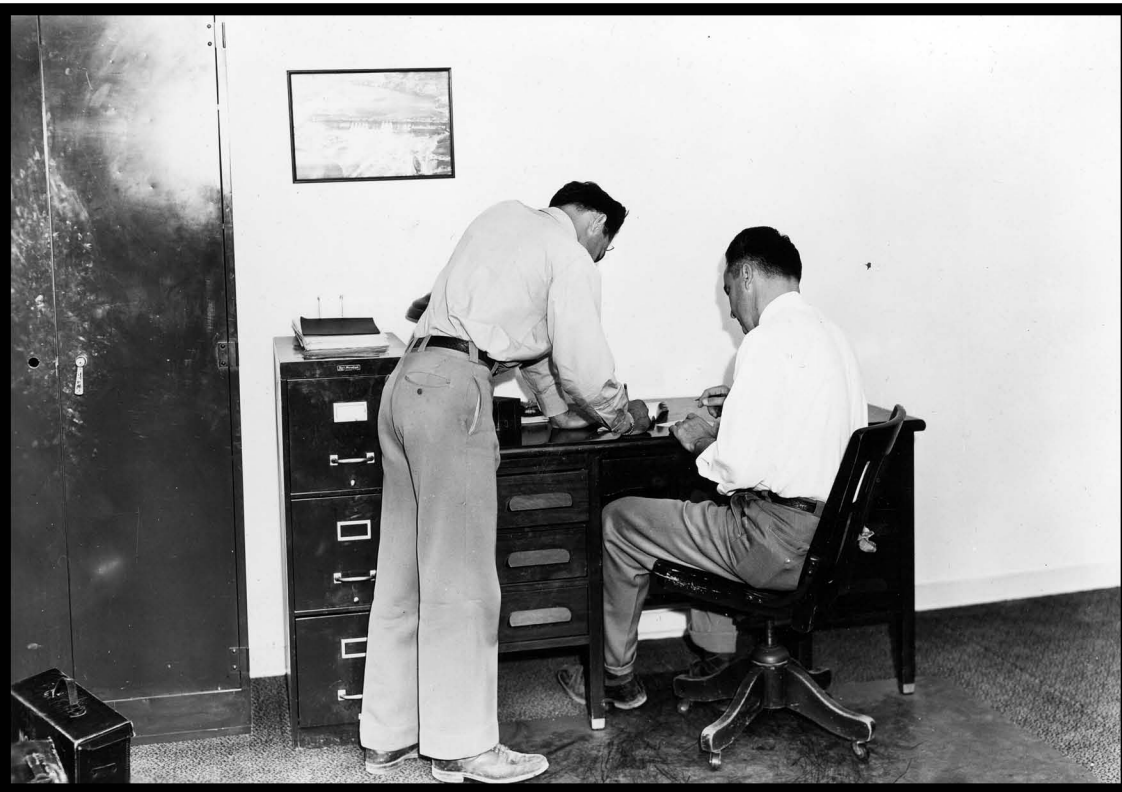
Above: Aerial view of Blum's Dude Ranch on the West slope of the Bitterroot Mountains. Elk, Deer, Bear, Goat, and Fish are plentiful. On the white line to the left of the picture is an airport that we use many times.

* * *

Lower Picture No. 6. Myrtle Stout, Secretary, in charge of War Training Service records, and Harold Haines, CAA Resident Flight Supervisor, completing a board action, Isabella Robertson, in charge of student progress and flight schedules, working on tomorrows flight schedule.



P2008.8.016



P2008.8.017

Above Picture No. 7. Don Wolf, Assistant chief pilot, seated at the chief pilots desk discussing a flight with Stanley Hepler, Flight instructor.

* * *

Below: This gas pit is used chiefly for itinerent aircraft. Here one of the three Cessna's owned by Zimmerly Air Transport is being refueled. All trainers are gased by truck on the flight line.



P2008.8.018



P2008.8.019

Above Picture No. 8. Shipping and receiving room of the Parts department.

* * *

Lower Picture No. 9. Shows the new addition to our Parts room office (refer to floor plan). The Parts room office and the new addition are used by Earl Myers, Purchasing Agent; Bernadette Lowery, his Assistant; Mary Lou Whitmore, Telephone operator and Clearance Officer; and Leona Druffel, Secretary, in charge of airplane log books, work orders, and time cards.



P2008.8.020



P2008.8.021

Above Picture No. 10. A South view of the Parts room with Earl Myers, Purchasing Agent, on the ladder and Walter Millard, Parts Manager, seated.

* * *

Lower Picture No. 11. Another view of the Parts room.



P2008.8.022

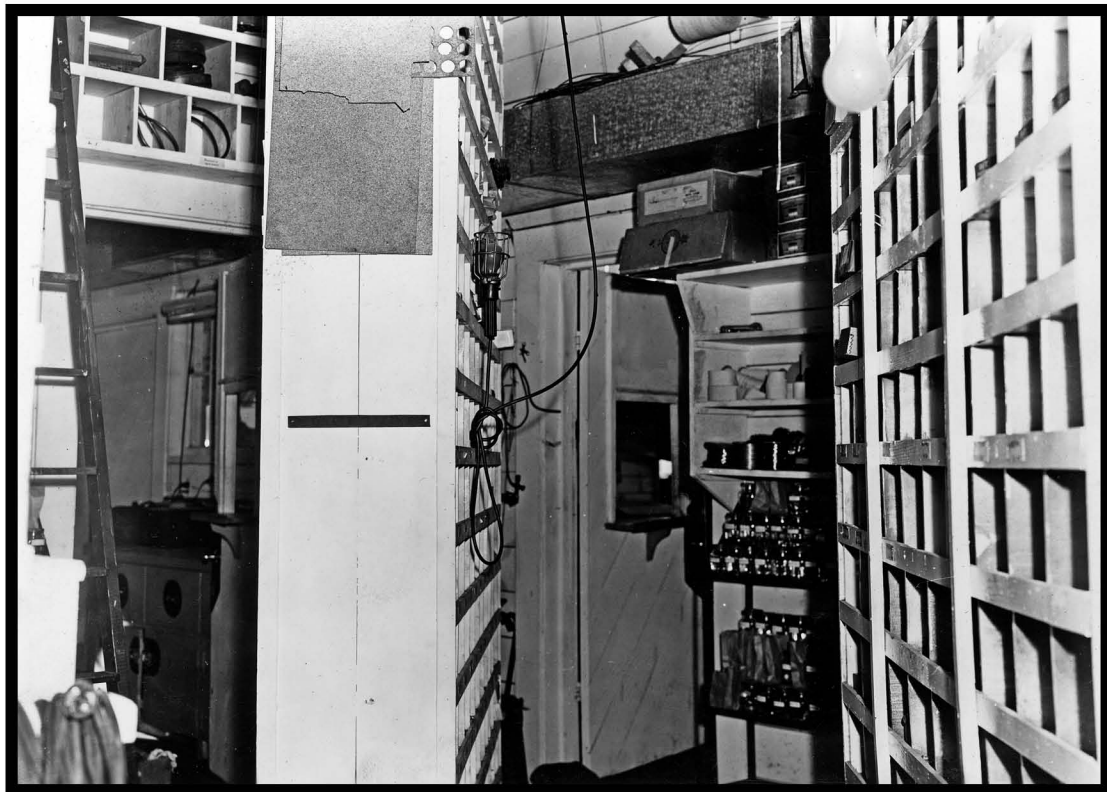


P2008.8.023

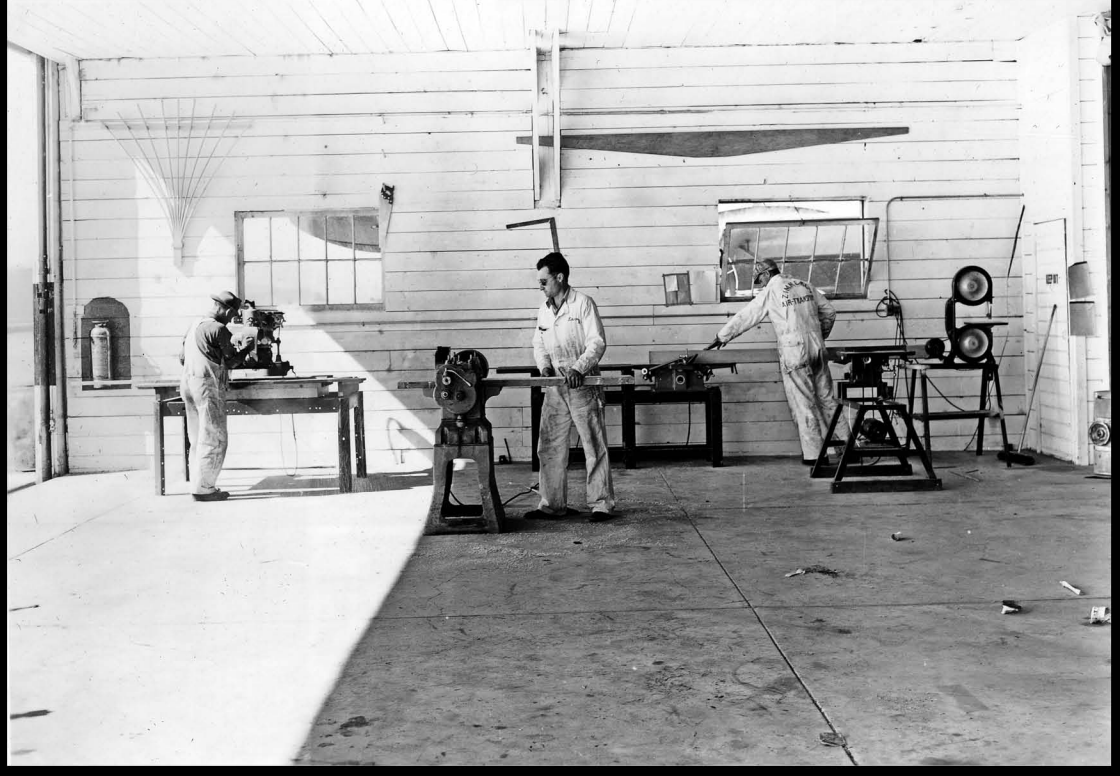
Above Picture No. 12. Another view of the Parts room.

* * *

Lower Picture No. 13. Another view of the Parts room.



P2008.8.024



P2008.8.025

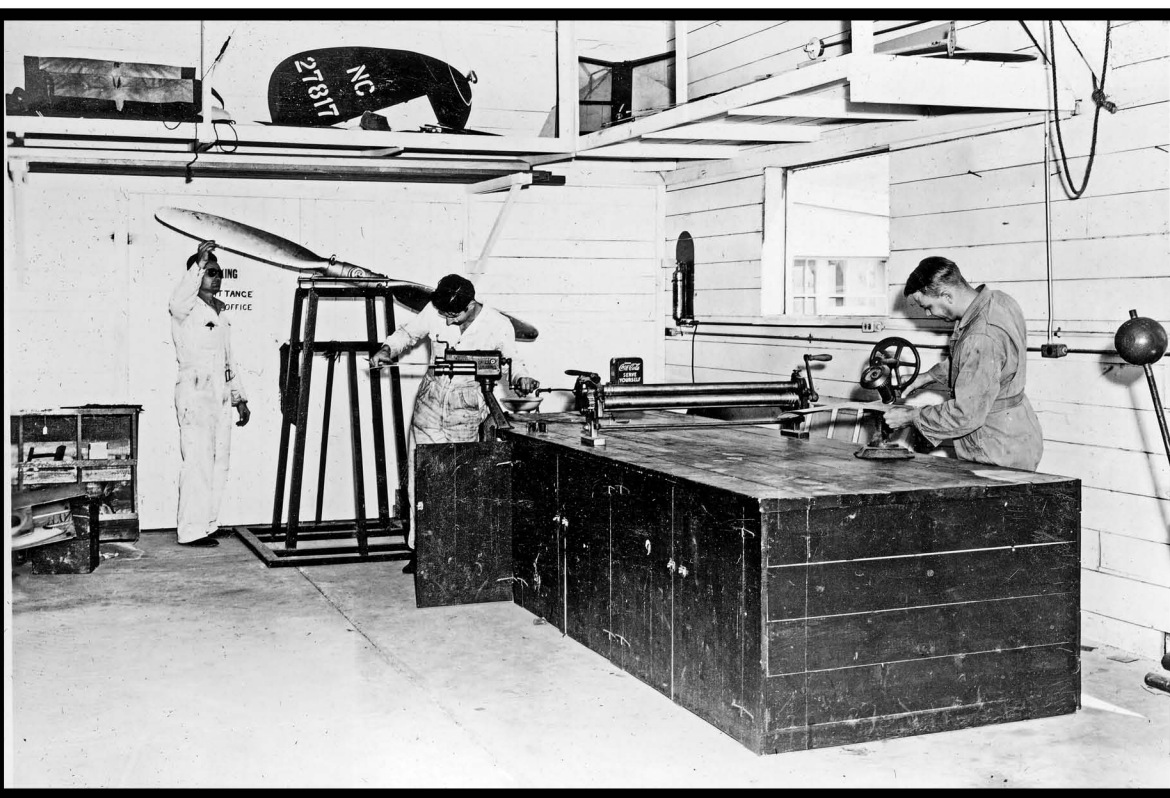
Above Picture No. 14. Shows part of our Wood Working equipment used in our Approved Shop No. 2350.

* * *

Lower Picture No. 15. Another partial view of our well equipped Sheet Metal department in operation.



P2008.8.026

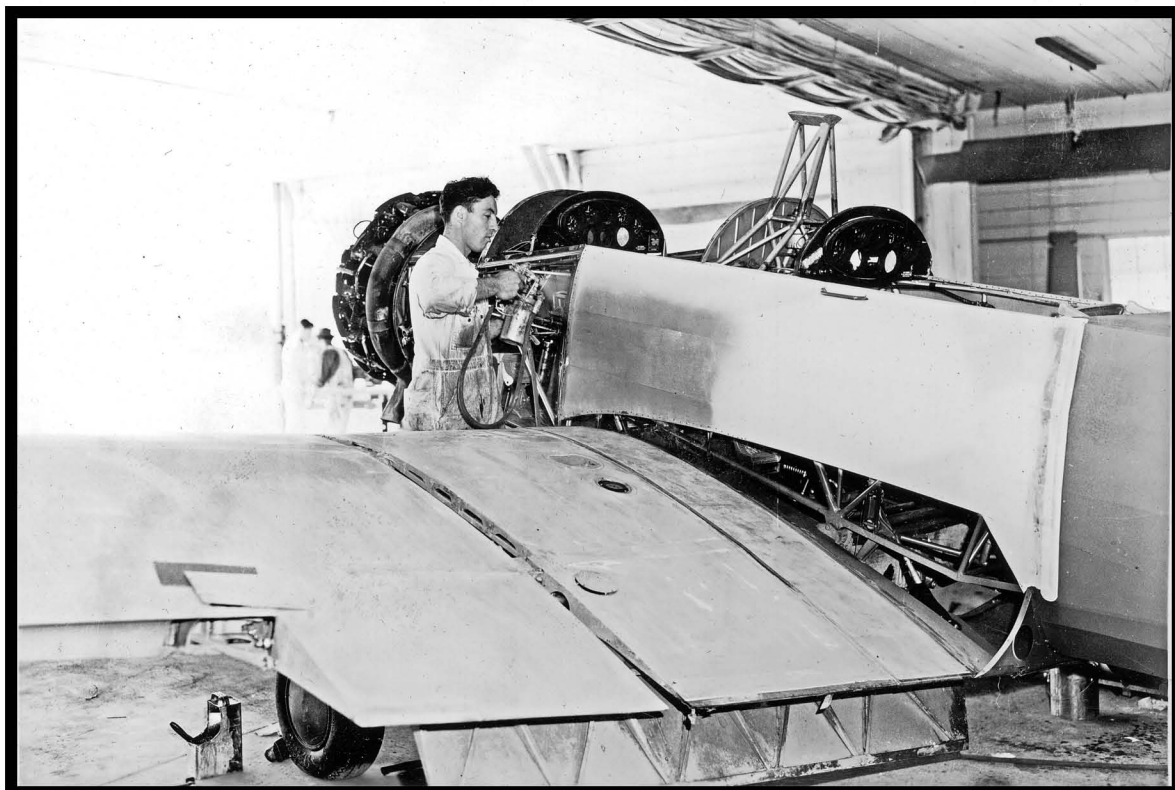


P2008.8.027

Above Picture No. 16. Frank Brockway and Floyd Smith at work in the Metal department. Dave Barr, Parachute rigger and mechanics helper is balancing a propeller.

* * *

Lower Picture No. 17. This Fairchild M62B was recently completely repainted. Bob Nelson is shown spraying on the first coat of silver.



P2008.8.028



P2008.8.029

Above Picture No. 18. Our electrically heated vat for cleaning motors and other parts before magnfluxing. This picture shows a 3/4 inch hose and foamite gun. Six fire hose which include 2-2 inch hose are in locations approved by the fire inspectors. In addition to these we have numerous hand fire extinguishers. Fire drills are conducted weekly.

* * *

Lower Picture No. 19. A customers Piper Cub Coupe being overhauled in our aircraft overhaul shop after accident.



P2008.8.030



P2008.8.031

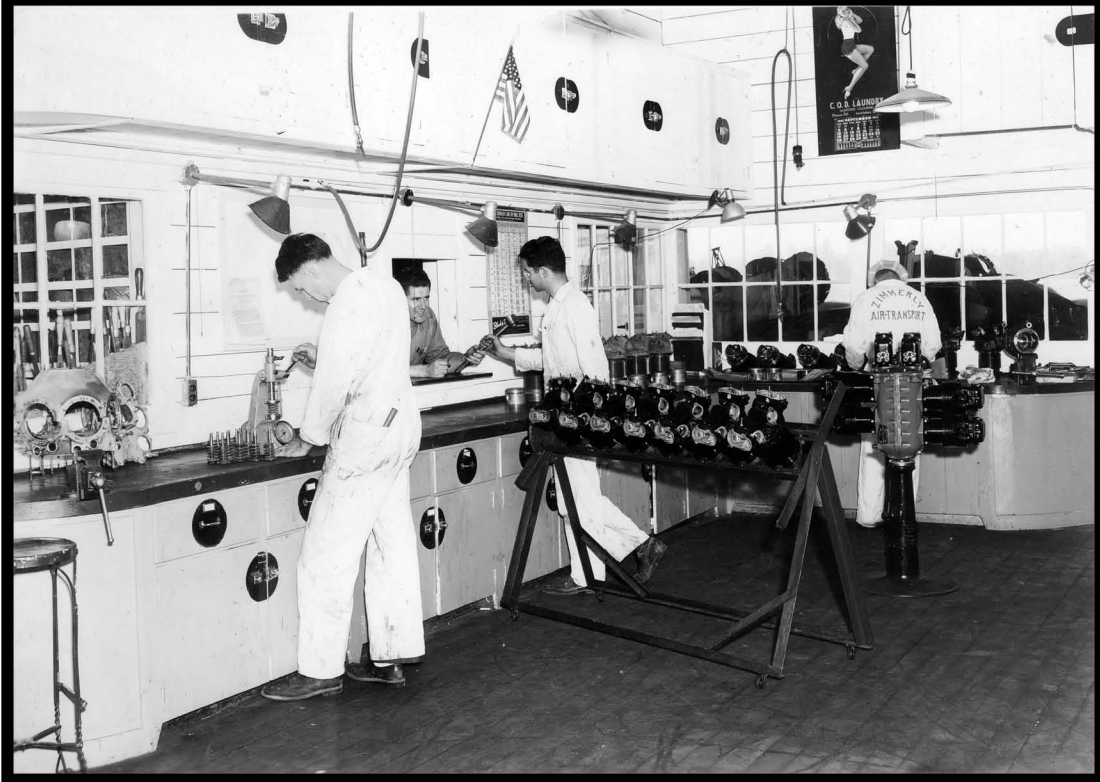
Above: Another one of our Cessna's used for instrument training and business trips.

* * *

Below: In addition to overhauling and maintenance on War Training Service airplanes our shop completely rebuilt this S-6000-B Travelair 7 passenger airplane. This airplane is used for forest fires and Civil Air Patrol.



P2008.8.032



P2008.8.033

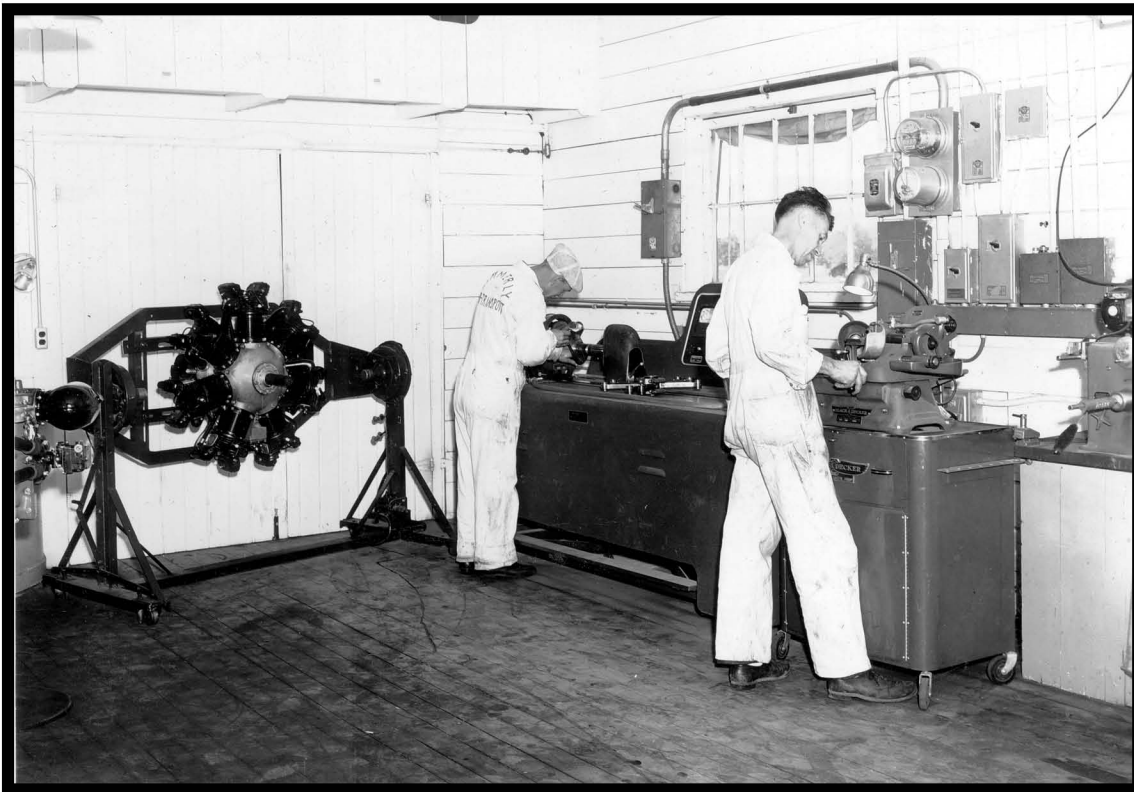
Above Picture No. 20. Another view of the engine room showing convenient work bench, motor stand, and valve spring testing machine.

* * *

Lower Picture No. 21. Frank Brockway, operating the Sunnen Reamer. Earl Clark, overhauling a carburetor. We have all parts and complete testing equipment for carburetors.



P2008.8.034



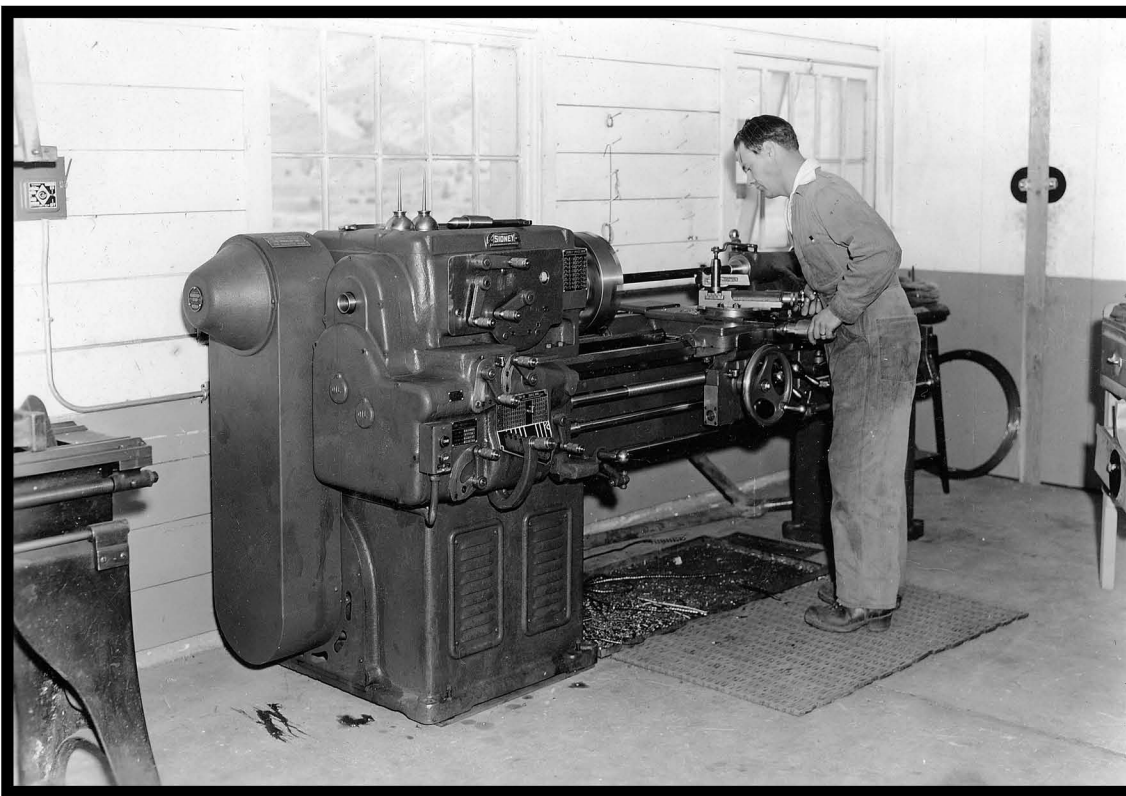
P2008.8.035

Above Picture No. 22. Bun Phay, left, is operating a Magnflux machine used to detect minute cracks in vital engine parts thus cutting possible engine failure to a minimum. Three of the mechanics have taken special training in the operation of this machine from special representatives of the Magnflux Corporation. Earl Clark, at the right, operating a valve refacing machine.

Lower Picture No. 23. Harold Holbrook, licensed mechanic with years of experience with electrical equipment, is shown testing a magneto. Our Magneto department is well equipped with parts and facilities for complete overhaul.



P2008.8.036

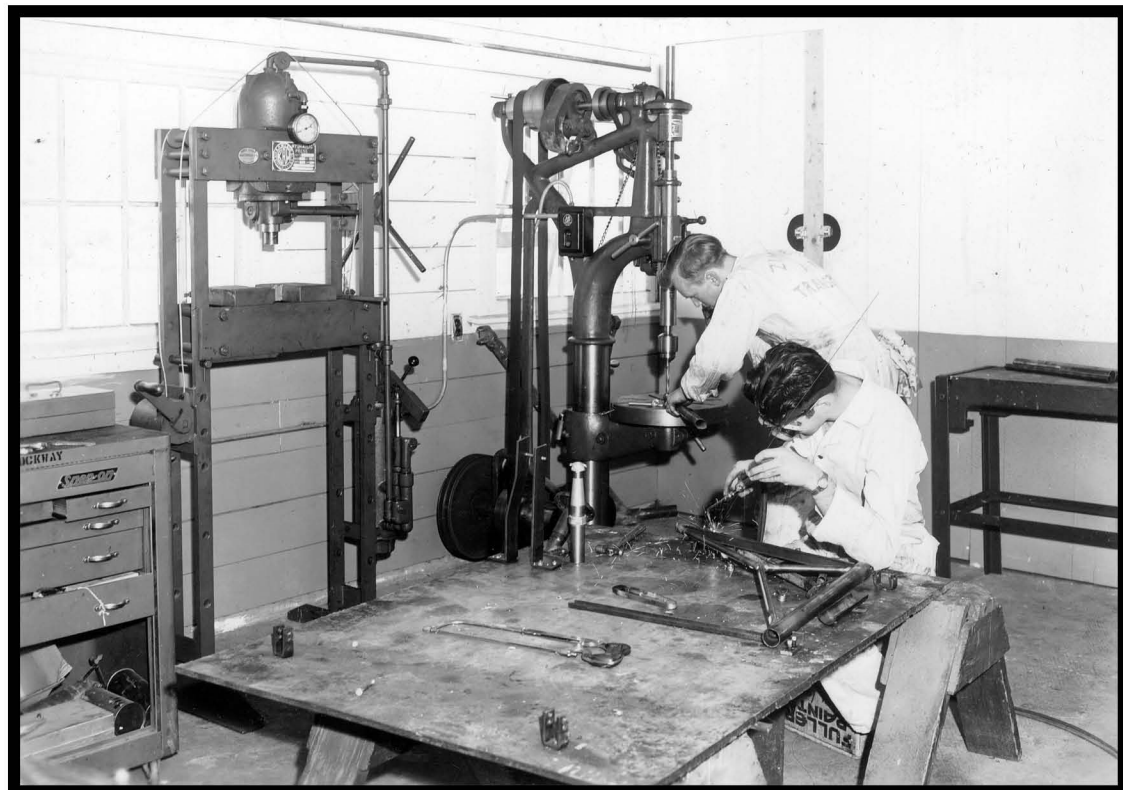


P2008.8.037

Above Picture No. 24. Our new Sidney precision lathe is operated at least 8 hours a day by our experienced machinist, Jean Frick.

* * *

Lower Picture No. 25. This picture shows additional machine shop equipment and a landing gear for a Piper J4 being completely rebuilt.



P2008.8.038

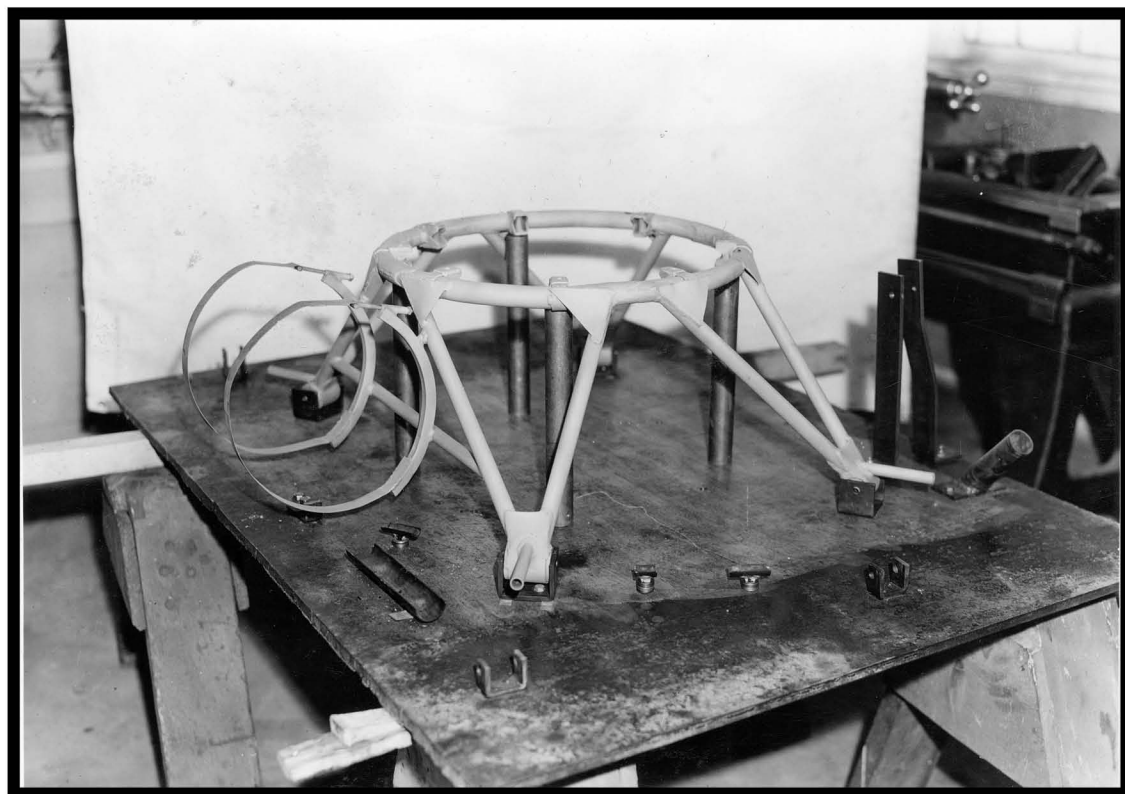


P2008.8.039

Above Picture No. 26. This picture shows our metalizing gun being operated by Jean Frick, experienced machinist.

* * *

Below: With the exception of the motor ring this entire mount was built in our shop for a War Training Service operator. This operator was unable to purchase this part any where in the United States.



P2008.8.040



P2008.8.041

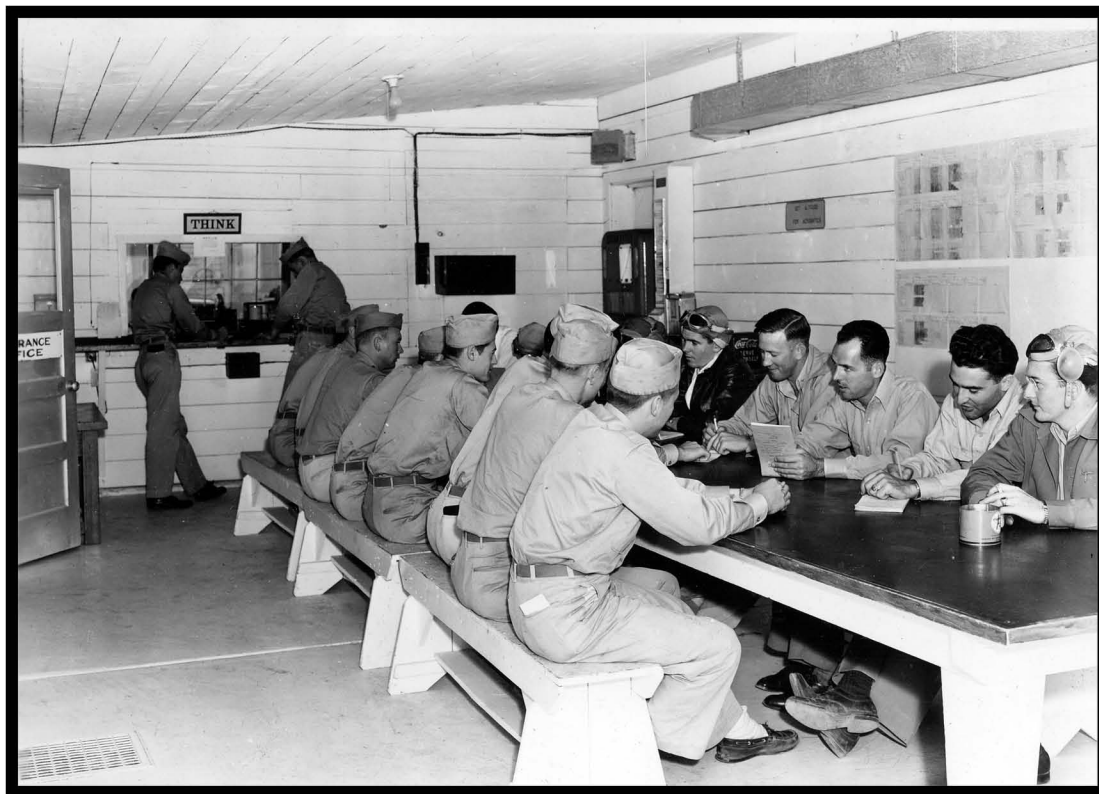
Above Picture No. 27. A Howard DGA18 and Fairchild M62B Trainer are shown in the maintenance department undergoing a 100 hour inspection. During this inspection the entire airplane and motor are thoroughly cleaned.

* * *

Lower Picture No. 28. Gunnar Anderson, licensed mechanic, J.C. Hamaker, A & E mechanic, with Allen McClain, mechanics helper, completing a 100 hour inspection.



P2008.8.042



P2008.8.043

Above Picture No. 29. A view of the "Ready Room" showing a group of Naval Cadets and their Instructors. The "Ready Room" is used to prepare for flight and to give ground instruction after each flight.

* * *

Lower Picture No. 30. Another view of part of the "Ready Room, showing part of the winter flying equipment used by the Cadets and furnished by Zimmerly Air Transport.



P2008.8.044



P2008.8.045

Above Picture No. 31. This picture shows a part of the parachutes used in our program.

* * *

Below: Howard DGA18 trainer.



P2008.8.046



P2008.8.047

Above: Fairchild M62B trainer, one of a fleet of five.

* * *

Below: Piper J3 C65, one of a fleet of twenty.



P2008.8.048



P2008.8.049

Above: Fairchild M62B's and Howard DGA18's on the flight line between flights. The gas truck has refueled all but the last plane and the Cadets are in the cockpits getting ready for the next flight. The trainers are wiped down after every flight. One of the boxes containing clean rags can be seen behind the first plane.

* * *

Below: The Intermediate flight line. Trainers are Fairchild M62B and Howard DGA18.



P2008.8.050



P2008.8.051

Above: The 9:20 flight of Intermediate students are taxiing in a zig-zag manner to the end of the field for takeoff.

* * *

Below: Floyd Bennett, lineman, and his gas truck refueling the last airplane on the flight line. All airplanes needing gas are refueled during the intermission in flight schedules.



P2008.8.052



P2008.8.053

Above: All trainers are gased by truck on the flight line, saving time and confusion at the gas pit.

* * *

Below: One of our Cessna airplanes used for instrument training and business trips.



P2008.8.054



P2008.8.055

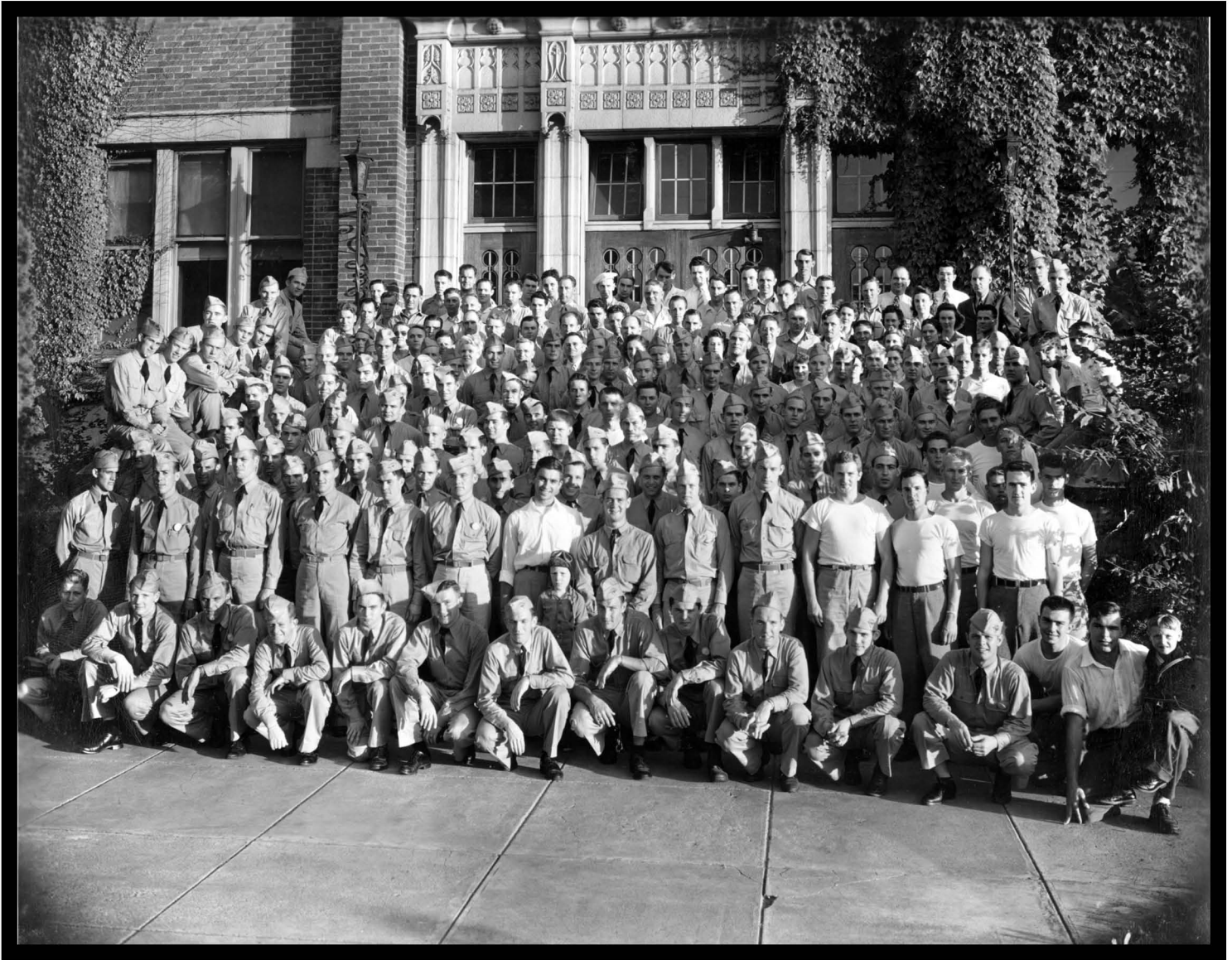
Above: Head-on view of Fairchild trainer.

* * *

Below: Two trainers illustrating the tie-downs used for all training planes. These tie-downs conforming to WTS specifications assure adequate protection from strong winds which may occur while planes are not hangared.

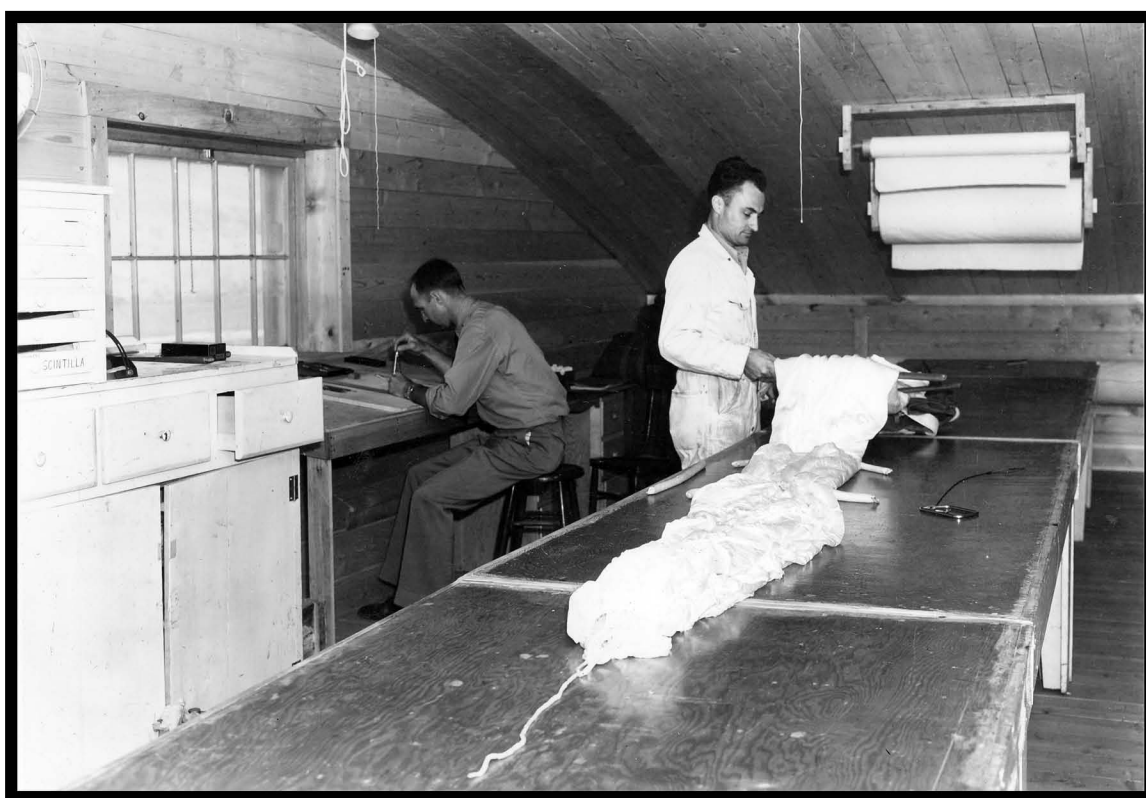


P2008.8.056



P2008.8.057

Group picture of Navy Cadets, Lewiston State Normal Ground School and all personnel of Zimmerly Air Transport. At the time this picture was taken there were approximately 150 cadets enrolled.



P2008.8.058

Above: Dave Barr, certificated parachute rigger, repacks all of our parachutes. Ivan Gustin, Chief Pilot is shown at the drafting board.

* * *

Below: North portion of the second floor showing parachute table and sewing equipment.



P2008.8.059



P2008.8.060

Above: Irma Gilleland, Secretary, and Harold Haines, CAA Resident Flight Supervisor, at work in the War Training Service office at the Asotin County Airport. Doug Balsillie, Maintenance Supervisor, was at Pullman when this picture was taken.

* * *

Below: Lt.(jg) Yerkes, Naval Flight Supervisor, shown in his private office at the Airport.



P2008.8.061



P2008.8.064

Above: Office personnel and Chief Pilots.

* * *

Below: Zimmerly Air Transport employs 27 certificated instructors. Three of the group were on vacation when this picture was taken.



P2008.8.065



P2008.8.066

Above: Shop, Parts department, and Clearance office personnel are shown in this picture. A large percentage of all employees have been with Zimmerly Air Transport for more than a year.

* * *

Below: One of our storage rooms on the second floor of the shop building. We have a complete stock of aircraft tubing, aluminum tubing, chromoly and aluminum sheeting of all thicknesses, brass and steel bar stock. We are able to keep 100% of our equipment on the flight line with our modern shop, experienced mechanics and a very complete stock of supplies, including nine spare engines for Fairchild's, Howards, and Cubs.



P2008.8.067

LEWISTON STATE
NORMAL

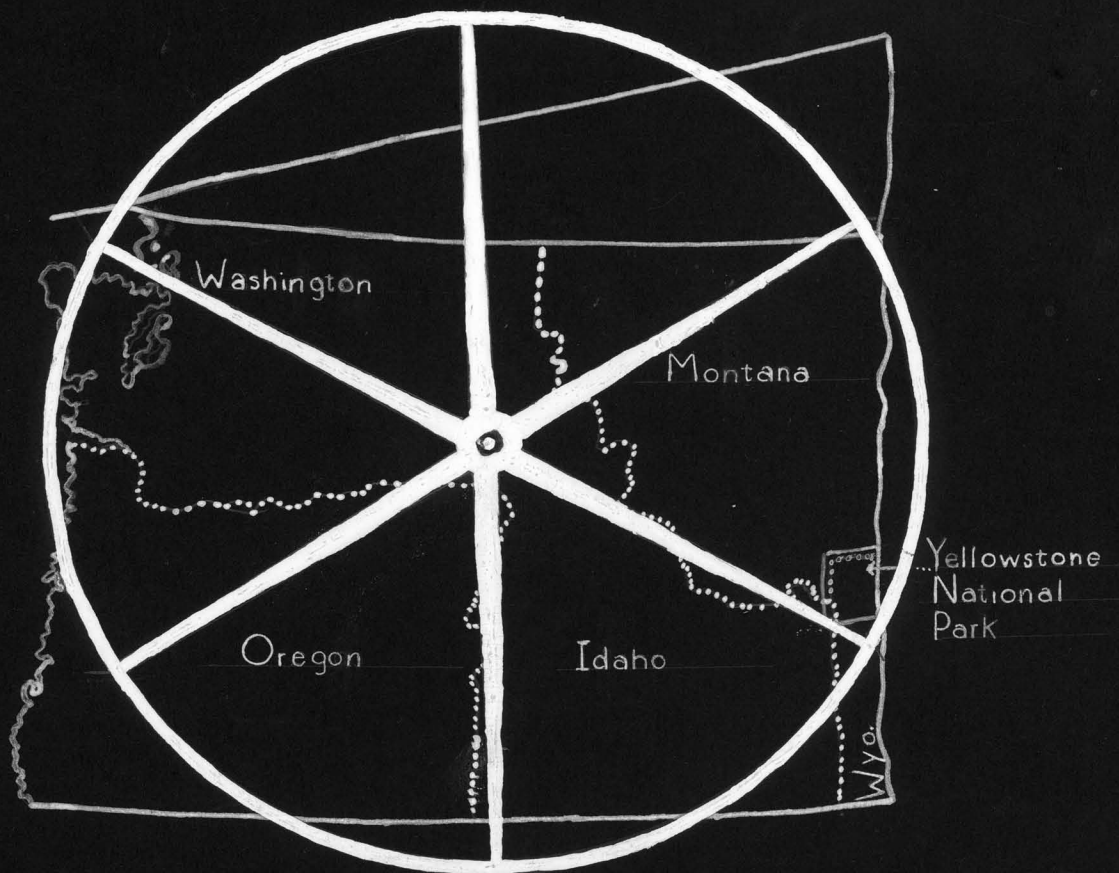
LEWISTON, IDAHO

TRANSPORTATION
LODGING
BOARD

AND

GROUND SCHOOL

LEWISTON, IDAHO
HUB
OF
THE PACIFIC NORTHWEST



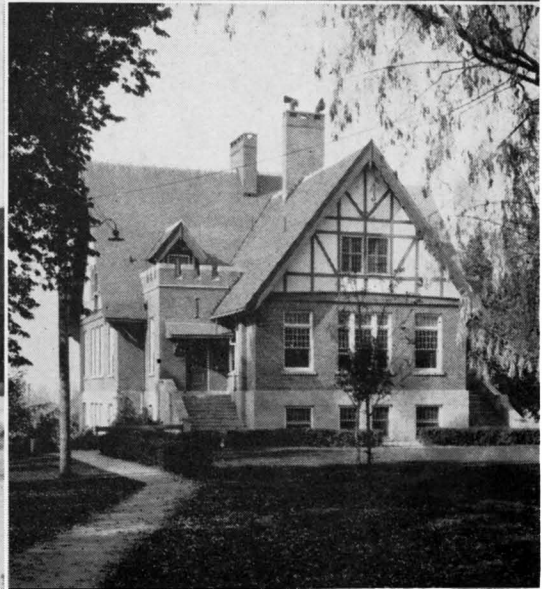
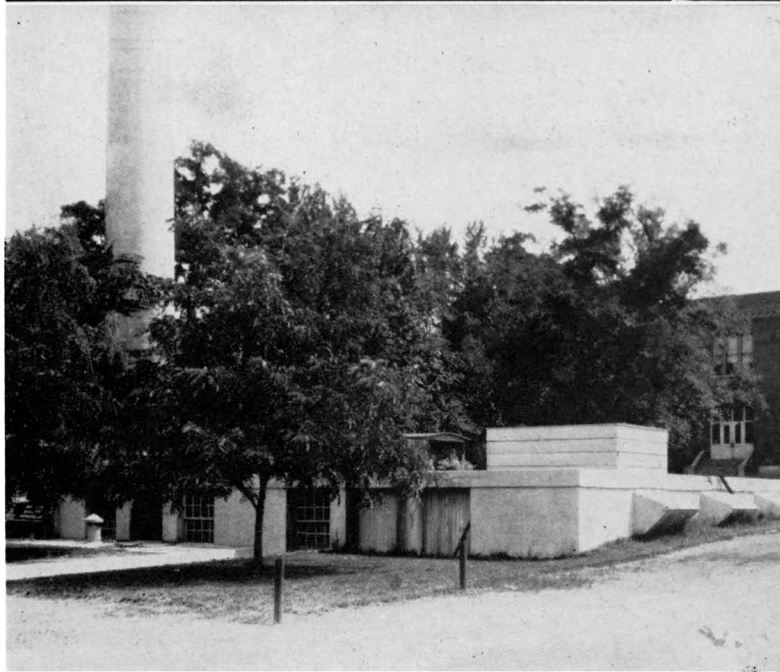
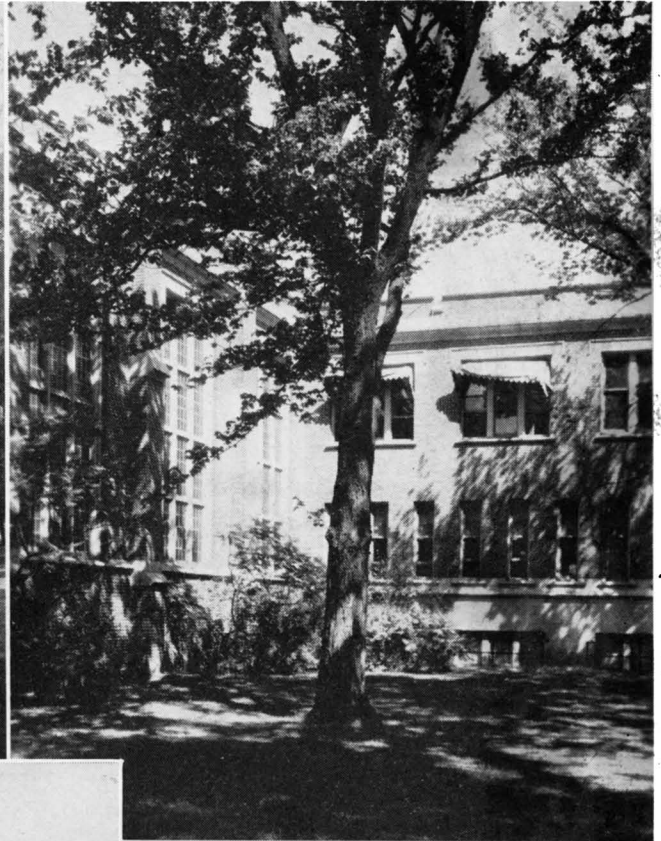
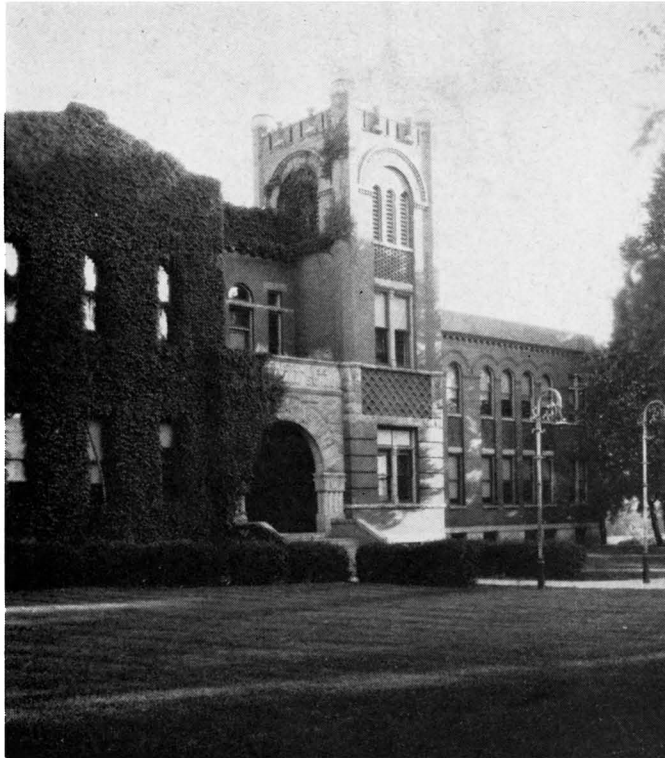


P2008.8.070

CAMPUS AND BUILDINGS

The campus of the Normal School, containing 30 acres, is situated on "Normal Hill," in one of the best and most pleasant residence sections of the city. It is made attractive by spacious lawns, flower gardens, trees, shrubbery artistically arranged about buildings, tennis courts, and in the arrangement of the well-built and well-equipped buildings, of which there are nine.

Our Campus



Training School
Heating Plant

View of Ad Building
Science Building

P2008.8.071

CAMPUS AND BUILDINGS

The campus of the Normal School, containing 30 acres, is situated on "Normal Hill," in one of the best and most pleasant residence sections of the city. It is made attractive by spacious lawns, flower gardens, trees, shrubbery artistically arranged about buildings, tennis courts, and in the arrangement of the well-built and well-equipped buildings, of which there are nine.



P2008.8.072

LEWIS HALL, the oldest dormitory on the campus, is of the English type of architecture. The rooms include sixteen suites, consisting of a study and alcove bedroom. Each suite has an open fireplace in addition to steam heat. Single rooms do not have fireplaces. All rooms are equipped with study tables, chairs, beds, bureaus, and curtains. There is a bath for every eight students. The living room, with its huge fireplace and attractive furnishings, is very inviting and comfortable.



P2008.8.073

TRANSPORTATION

With flight schedules running throughout the daylight hours, transportation to and from the airport became a major problem. The distance to the airport is fortunately only two and one half miles. A trip is made about every 20 minutes so Cadets will not have to waste time between schedules. We drive about 180 miles per day.

The bus shown above was built to our special order by Fitzjohn Coach Co. of Muskegon, Michigan. It is a Fleetline Sedan 1942 Chevrolet cut in two, with two additional seats added.

The cost was approximately \$3000.00.



GYMNASIUM

STUDENT LOUNGE

P2008.8.074

A room in the Student Union Building furnished with California-type sofas, chairs, and incidental pieces, as well as a large automatic radio-phonograph, game and writing tables, etc., was opened in January, 1942, as a recreation and lounging room for all students. A modern kitchen opens off the lounge, and special club functions may be held in the lounge by arrangement. Current popular magazines are available, and every effort has been made to provide a comfortable student meeting place for leisure hours. Furnishing the lounge was made possible by funds saved over a period of years by the Associated Women Students.

P2008.8.075





P2008.8.076

LEWIS HALL for men, the oldest dormitory on the campus, is of the English type of architecture. The rooms include sixteen suites, consisting of a study and alcove bedroom. Each suite has an open fireplace in addition to steam heat. Single rooms do not have fireplaces. All rooms are equipped with study tables, chairs, beds, bureaus, and curtains. There is a bath for every eight students. The living room, with its huge fireplace and attractive furnishings, is very inviting and comfortable. The campus dining hall and kitchen are located in this building. Lewis Hall is at present being used for living quarters for Navy trainees as well as for men students.



P2008.8.077

SPALDING HALL, the dormitory completed in 1924 and converted into a men's hall two years ago, furnishes accommodations for a maximum of sixty-eight men. The rooms are arranged in suites, with two study rooms, a dressing room, and a sleeping porch for four students. Each study room is furnished with a study table, reading lamp, book stand and chairs. The dressing room contains two chiffoniers, four lockers, and a hand basin; and the sleeping porch has four single beds. The living room and a small reception parlor are on the main floor. The basement contains complete laundry, and a trunk and store room.

Location of Airport

NORMAL
CAMP
S



Lewiston Clarkston Valley

P2008.8.078

OBSTACLE COURSE

Lewiston State Normal School

Lewiston, Idaho

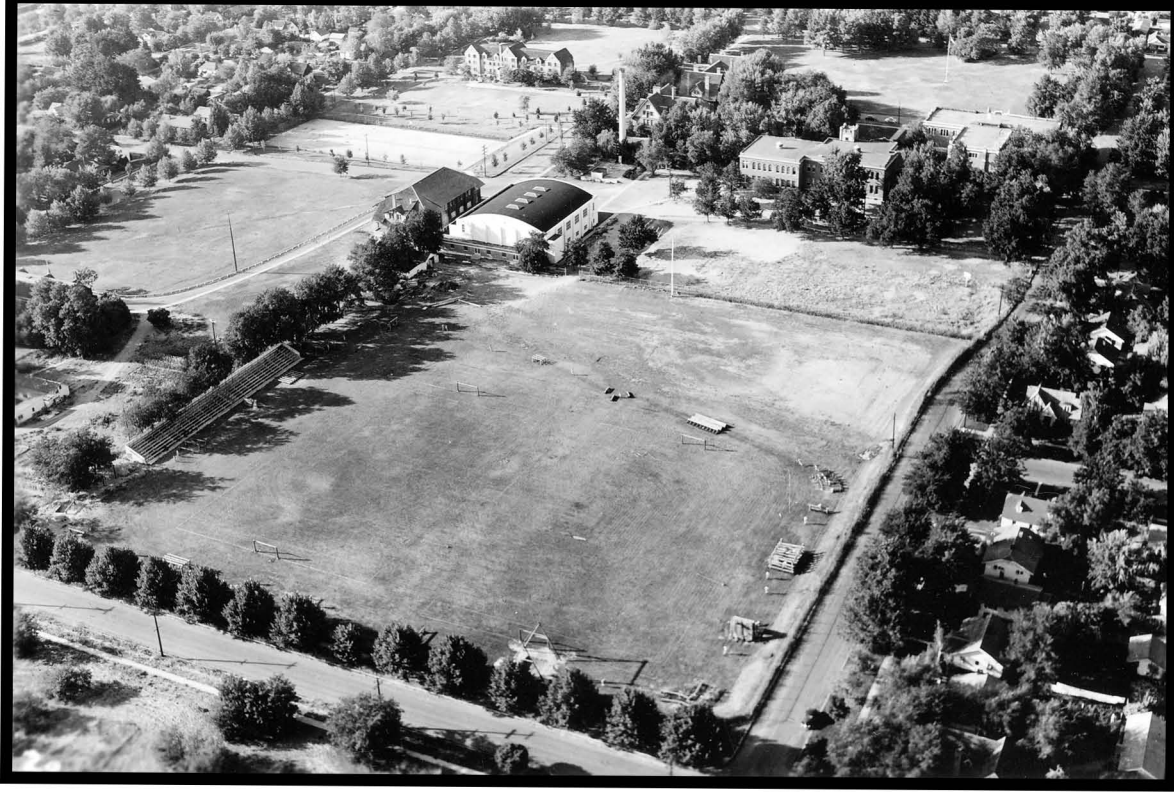
An obstacle course is recognized by the Navy as an integral part of a Naval Cadet's physical training program. Lewiston State Normal determined to build one unsurpassed by any other school and the result is a course recognized as one of the best balanced and toughest in the country.

Construction was begun on June 1. Cadets were used as laborers, under the supervision of W. S. Thornber, a log construction expert. White fir logs were used. They were peeled, sandpapered and treated with linseed oil to preserve and add to their natural color.

The course contains twenty obstacles encircling the athletic field and is an even five hundred yards in length. It is designed to develop and strengthen all muscles besides testing an individual's strength, agility, endurance, coordination and courage.

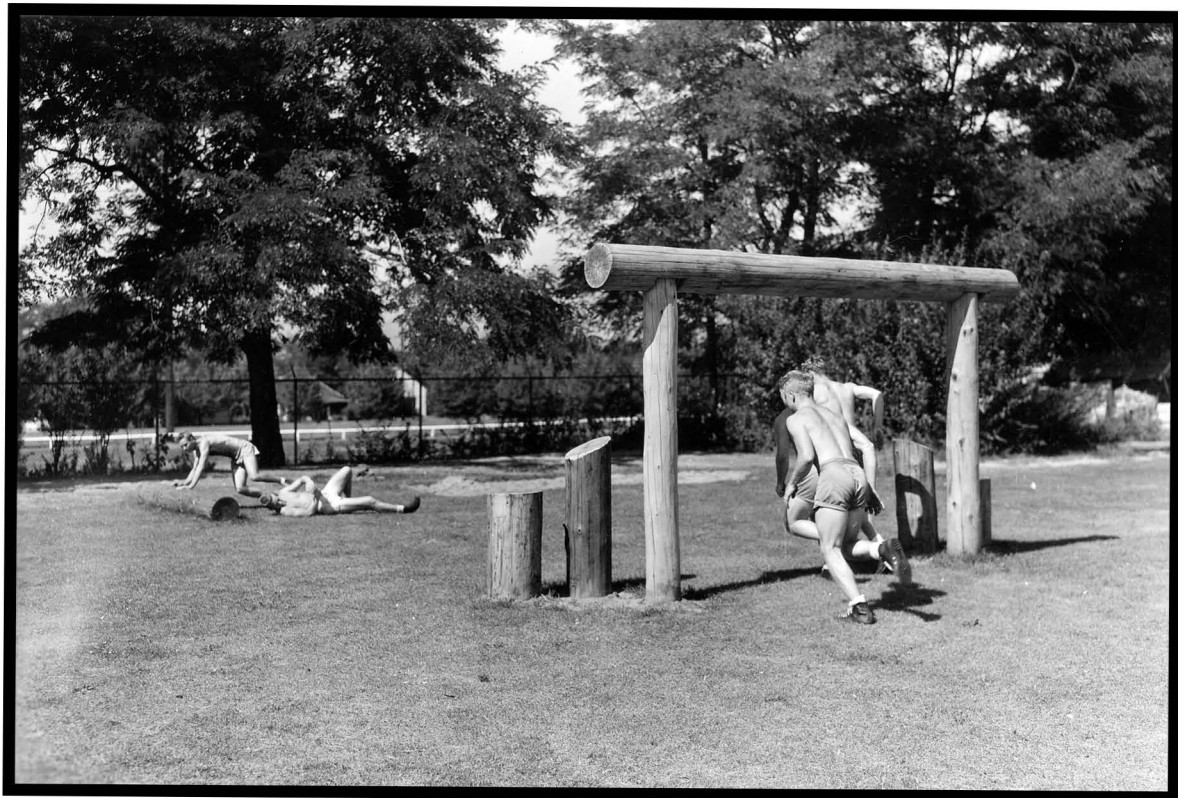
The obstacles were put into use as soon as each was finished and on July 15 the entire course was run for the first time. Spectators marvelled at the ruggedness as well as the beauty of the log obstacles.

Built for permanence, all of the obstacles are securely anchored and as a result the danger element has been largely eliminated. A few minor sprains and bruises have been the only injuries so far resulting from "the race that kills champions and makes champion fighters."



P2008.8.080

"AERIAL VIEW OF ATHLETIC FIELD."



P2008.8.081

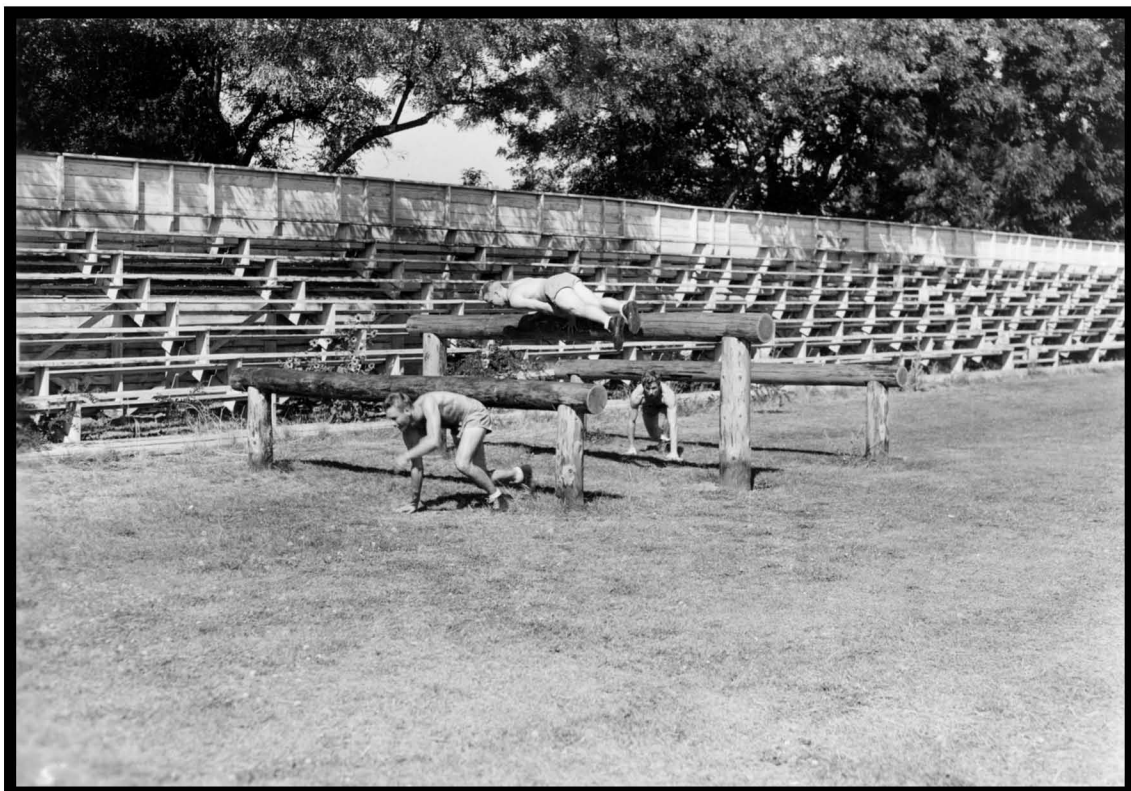
START & FINISH.
Develops fast starting from Prone.



P2008.8.082

HAND-OVER-HAND ON LOGS.

Develops Strength of Hand-arm & Shoulder.



P2008.8.083

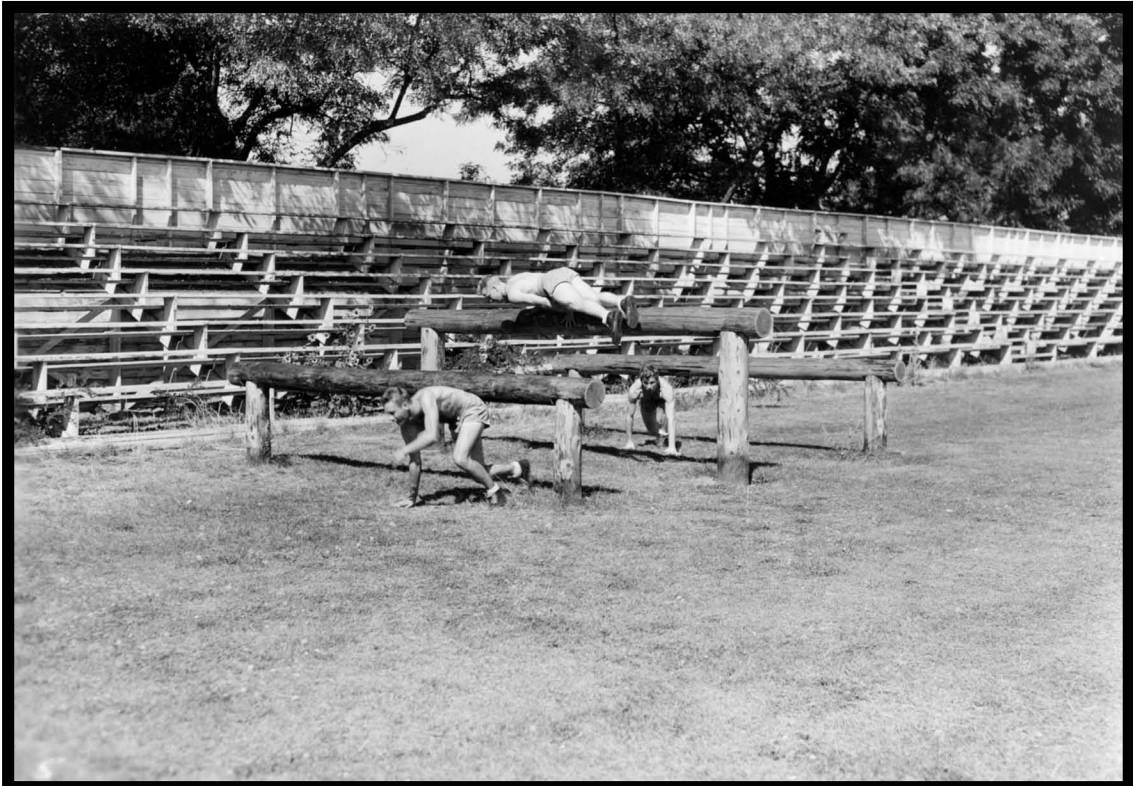
CHECKERBOARD.

Develops Agility.



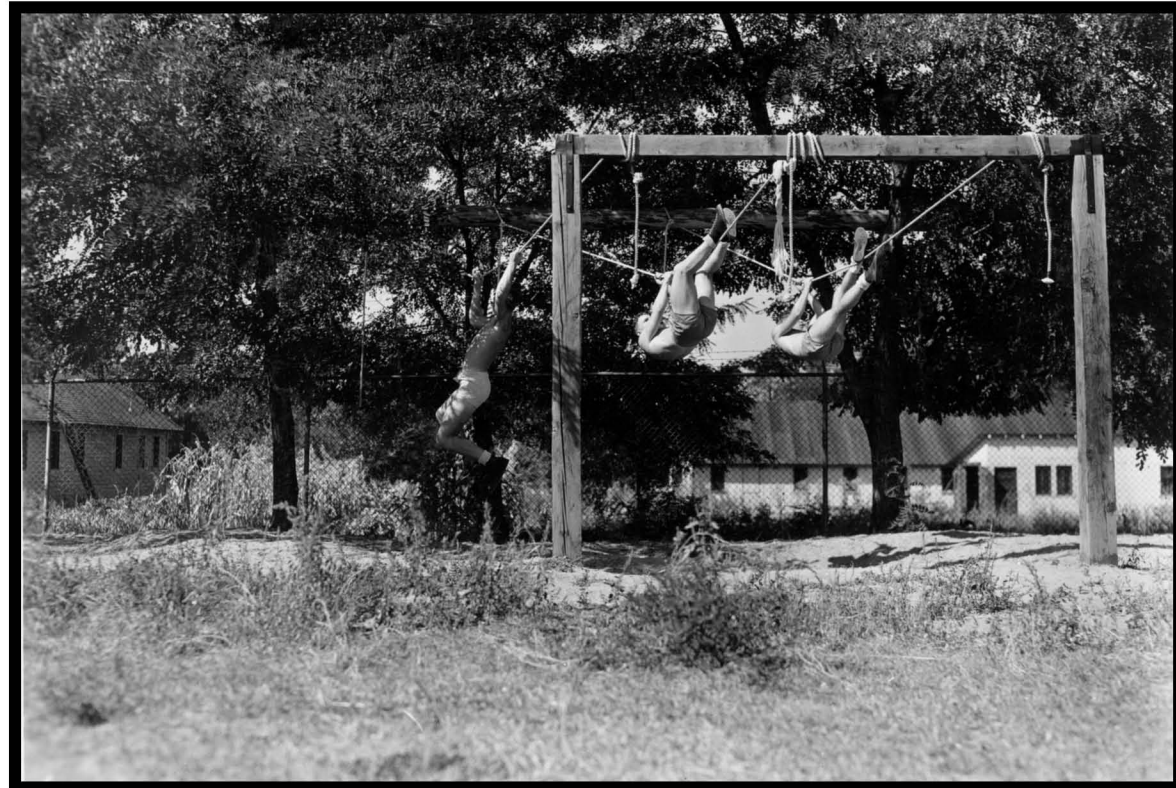
P2008.8.084

7 FT. WALL.
Develops "Power Explosiveness" & Courage.



P2008.8.085

UNDER-OVER-UNDER.
Develops Coordination & Agility.



P2008.8.086

MONKEY CLIMB.

Develops Arm & Shoulder Girdle.



P2008.8.087

TANK TRAP - MOUND A PIT.

Develops Running & Jumping Ability in sand.



P2008.8.088

OVERHEAD LADDER.

Arm & Shoulder developer.



P2008.8.089

ZIGZAG RUN.

Develops Coordination.



P2008.8.090

HURDLE.

Develops legs & takeoff judgment.



P2008.8.091

ROPE SWING.

Develops Ability to leap with "eyes open".



P2008.8.092

BALANCE RUN.
Develops Balance.



P2008.8.093

14 FT. WALL.
Develops ability to scale & to land without injury.



P2008.8.096

ANGLE JUMPS.

Develops change of direction at fullspeed.



P2008.8.097

STRADDLE RUN.

Develops speed for angle running.



P2008.8.098

HANDWALK.
Arm & Shoulder developer deluxe.



P2008.8.099

STUDENT UNION BUILDING
Contains Swimming Pool & Recreation Rooms.



P2008.8.100

GYMNASIUM.

Main Playing Court 48 by 88.
2 Cross Courts each 40 by 60.
Seating Capacity 1600.
Man's locker room accommodates
192 men.



P2008.8.101

HEALTH CENTER.

Completely remodeled to provide room
for 6 to 10 Cadets at a time. Regis-
tered Nurse with years of experience
on duty 24 hours a day.



P2008.8.102

GROUND SCHOOL OFFICE.
The School employs a full-time Coordinator who has all his ground school ratings and several years experience in teaching Aviation classes. Two competent, full-time secretaries and two part-time secretaries work in the Coordinator's Office.



P2008.8.103

ENGINES ROOM.
Our worst looking classroom but please note material available to aid in instruction.



P2008.8.104

RESIDENT NAVAL PERSONNEL.

A suite of four office rooms is provided for the Resident Naval Officer, Resident Athletic Officer, Naval Flight Supervisor, the Yeoman, and the Pharmacist Mate.



P2008.8.105

SWIMMING POOL.

Dimensions 44 ft. long.
20 ft. wide.
Varies from 3 ft. shallow to
10 ft. depth



P2008.8.106

CODE ROOM