

Certificate of Analysis

These test results are for Research and Development purposes only

Page 1 of 1

Sample

Sour Suver Haze

Strain

<LOQ	12.25%	14.27%
$\Delta 9$ THC	Total CBD	Total Cannabinoids
Not tested	Pass	142.7
Water Activity	10.97	mg / g Total Cannabinoids
	Moisture	



Sample ID

22110990534

Matrix

Flower

Metric

Harvest/Prod Date

Report Created

11/22/2022

Results Valid Until

11/22/2023

Sample Extracted
11/17/2022 17:15

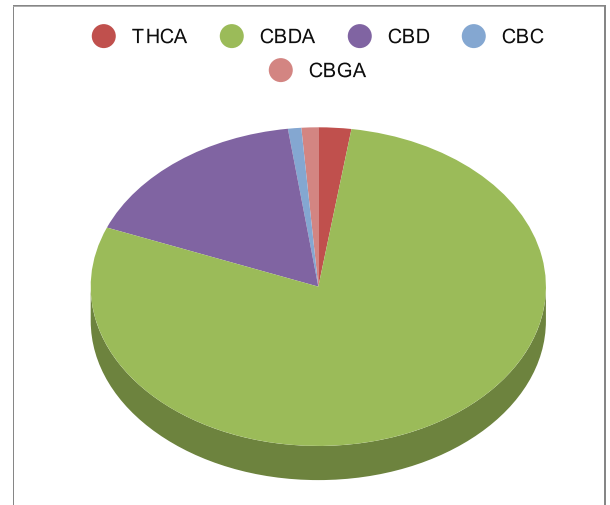
Sample Analyzed
11/18/2022 14:53

Method SOP LO001-R10

Cannabinoids

%Weight mg/ gram LOQ(% /w)

$\Delta 9$ THC	<LOQ	<LOQ)	0.06
THCA	0.33	3.3	0.06
Total THC (THCA*0.877)+9THC	0.29	2.9	0.11
CBDA	11.23	112.3	0.06
CBD	2.40	24.0	0.06
CBN	<LOQ	<LOQ)	0.06
$\Delta 8$ THC	<LOQ	<LOQ)	0.06
‡ CBC	0.14	1.4	0.06
‡ CBGA	0.17	1.7	0.06
‡ CBG	<LOQ	<LOQ)	0.06
‡ CBDV	<LOQ	<LOQ)	0.06
‡ CBDVA	<LOQ	<LOQ)	0.06
‡ THCVA	<LOQ	<LOQ)	0.06
‡ CBDQ	<LOQ	<LOQ)	0.06



Total THC and Total CBD are calculated values per OAR 333-064-0100. Cannabinoid values for plant matter samples are reported on a dry weight basis. Water activity action level is 0.65Aw. LOQ= Limit of Quantitation. NR=Not Reported.

- Lab Director

11/22/22

Results pertain to submitted samples only. [redacted] makes no claims as to the consumer safety or other risks associated with any detected or non-detected amounts of any pesticides, solvents or other adulterants. This report shall not be reproduced, unless in its entirety, without written approval from [redacted]. Samples were received in good condition and all QC samples met acceptance criteria of the method; data available upon request. Analytes accompanied by dagger (‡) are not within the scope of accreditation and are for informational purposes only.

.....
 Sour Suver Haze Seedless
 N/A
 Sample Type : Hemp Flower

Certificate of Analysis

Sample : CE11020006-002
 Harvest/LOT ID: N/A

Batch# : N/A
 Sampled : 10/20/21
 Ordered : 10/20/21

Sample Size Received : 3 gram
 Total Weight/Volume : N/A
 Completed : 10/25/21 Expires: 10/25/22
 Sample Method : SOP-024





Terpenes

TESTED

Terpenes	LOQ(mg/g)	Result (mg/g)	Result	Terpenes	LOQ(mg/g)	Result (mg/g)	Result
TRANS-CARYOPHYLLENE	0.08	6.114	<div style="width: 98%;"></div>	TERPINOLENE	0.08	3.822	<div style="width: 47%;"></div>
(1R)-ENDO-(+)-FENCHYL ALCOHOL	0.08	<LOQ	<div style="width: 0%;"></div>	LINALOOL	0.08	0.279	<div style="width: 3%;"></div>
CAMPHOR	0.08	<LOQ	<div style="width: 0%;"></div>	GERANIOL	0.08	<LOQ	<div style="width: 0%;"></div>
(1R)-(+)-CAMPHOR	0.08	<LOQ	<div style="width: 0%;"></div>	GAMMA-TERPINENE	0.08	<LOQ	<div style="width: 0%;"></div>
(1S)-(-)-CAMPHOR	0.08	<LOQ	<div style="width: 0%;"></div>	EUCALYPTOL	0.08	<LOQ	<div style="width: 0%;"></div>
HEXAHYDROTHYMOL (L-MENTHOL)	0.08	<LOQ	<div style="width: 0%;"></div>	(-)-ALPHA-BISABOLOL	0.08	0.41	<div style="width: 5%;"></div>
TERPINEOL	0.08	0.272	<div style="width: 3%;"></div>	(-)-ISOPULEGOL	0.08	<LOQ	<div style="width: 0%;"></div>
NEROL	0.08	<LOQ	<div style="width: 0%;"></div>	(-)-CARYOPHYLLENE	0.08	0.142	<div style="width: 1%;"></div>
(+)-PULEGONE	0.08	<LOQ	<div style="width: 0%;"></div>	OXIDE			
GERANYL ACETATE	0.08	<LOQ	<div style="width: 0%;"></div>	ISOBORNEOL	0.08	<LOQ	<div style="width: 0%;"></div>
ALPHA-CEDRENE	0.08	<LOQ	<div style="width: 0%;"></div>	CAMPHERE	0.08	<LOQ	<div style="width: 0%;"></div>
ALPHA-HUMULENE	0.08	2.83	<div style="width: 3%;"></div>				
VALENCENE	0.08	<LOQ	<div style="width: 0%;"></div>				
ALPHA FARNESENE	0.02	0.896	<div style="width: 1%;"></div>				
BETA FAMESENE	0.059	2.754	<div style="width: 4%;"></div>				
CIS-NEROLIDOL	0.08	<LOQ	<div style="width: 0%;"></div>				
TRANS-NEROLIDOL	0.08	0.18	<div style="width: 0%;"></div>				
GUAJOL	0.02	0.988	<div style="width: 1%;"></div>				
(+)-CEDROL	0.08	<LOQ	<div style="width: 0%;"></div>				
BETA-PINENE	0.08	0.363	<div style="width: 0%;"></div>				
FENCHONE	0.08	<LOQ	<div style="width: 0%;"></div>				
ALPHA-TERPINENE	0.08	0.125	<div style="width: 0%;"></div>				
SABINENE HYDRATE	0.08	<LOQ	<div style="width: 0%;"></div>				
BETA-OCIMENE, CIS-OCIMENE	0.012	0.124	<div style="width: 0%;"></div>				
TRANS-BETA-OCIMENE	0.067	<LOQ	<div style="width: 0%;"></div>				
(R)-(+)-LIMONENE	0.08	0.957	<div style="width: 1%;"></div>				
(1S)-(+)-3-CARENE	0.08	0.162	<div style="width: 0%;"></div>				
P-MENTHA-1,5-DIENE (ALPHA-PHELLANDRENE)	0.08	0.16	<div style="width: 0%;"></div>				
BETA-MYRCENE	0.08	2.717	<div style="width: 3%;"></div>				
SABINENE	0.08	<LOQ	<div style="width: 0%;"></div>				
A-PINENE	0.08	0.345	<div style="width: 0%;"></div>				
Total (mg/g)		23.64	<div style="width: 100%;"></div>				


Terpenes

TESTED

Analyzed by 12	Weight 3056g	Extraction date 10/21/21 03:10:25	Extracted By 12
Analysis Method -SOP-T.40.090		Reviewed On - 10/22/21 13:56:49	
Analytical Batch -CE000471TER			
Instrument Used : GCMS-QP2020 EID:0170			
Running On : 10/21/21 15:24:58			
Batch Date : 10/21/21 15:19:33			
Reagent	Dilution	Consums. ID	
	80		

Terpenoid profile screening is performed using GC-MS with Liquid Injection (Gas Chromatography - Mass Spectrometer) using Method SOP-T.40.091 Terpenoid Analysis Via GC-MS

This report shall not be reproduced, unless in its entirety, without written approval from Kaycha Labs. This report is an Kaycha Labs certification. The results relate only to the material or product analyzed. Test results are confidential unless explicitly waived otherwise. Void after 1 year from test end date. Cannabinoid content of batch material may vary depending on sampling error. IC=In-control QC parameter, NC=Non-controlled QC parameter, ND=Not Detected, NA=Not Analyzed, ppm=Parts Per Million, ppb=Parts Per Billion. Limit of Detection (LoD) and Limit Of Quantitation (LoQ) are terms used to describe the smallest concentration that can be reliably measured by an analytical procedure. RPD=Reproducibility of two measurements. Action Levels are State determined thresholds variable based on uncertainty of measurement (UM) for the analyte. The UM error is available from the lab upon request. The "Decision Rule" for the pass/fail does not include the UM. The limits are based on F.S. Rule 64-4.310.

Lab Director
 State License #
 010-10166277B9D
 ISO Accreditation # 99861

Anthony Smith

Signature

10/25/21

Signed On

Certificate of Analysis

These test results are for Research and Development purposes only

Page 1 of 1

Horn Creek Hemp

Sample CBG White

Strain

0.08%	1.01%	14.24%
$\Delta 9$ THC	Total CBD	Total Cannabinoids
Not tested	Pass	142.4
Water Activity	10.38	mg / g Total Cannabinoids
	Moisture	



Sample ID **22110990532**

Matrix Flower

Metric

Harvest/Prod Date

Report Created 11/22/2022

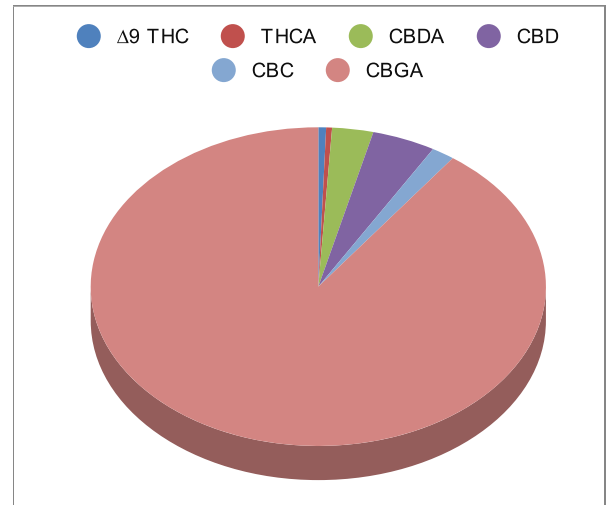
Results Valid Until 11/22/2023

Sample Extracted
11/17/2022 17:15

Sample Analyzed
11/18/2022 14:29

Method SOP LO001-R10

Cannabinoids	%Weight	mg/ gram	LOQ(% /w)
$\Delta 9$ THC	0.08	0.8	0.06
THCA	<LOQ	<LOQ)	0.06
Total THC ($_{THCA*0.877}+9_{THC}$)	0.13	1.3	0.11
CBDA	0.42	4.2	0.06
CBD	0.64	6.4	0.06
CBN	<LOQ	<LOQ)	0.06
$\Delta 8$ THC	<LOQ	<LOQ)	0.06
‡ CBC	0.24	2.4	0.06
‡ CBGA	12.80	128.0	0.06
‡ CBG	<LOQ	<LOQ)	0.06
‡ CBDV	<LOQ	<LOQ)	0.06
‡ CBDVA	<LOQ	<LOQ)	0.06
‡ THCVA	<LOQ	<LOQ)	0.06
‡ CBDQ	<LOQ	<LOQ)	0.06



Total THC and Total CBD are calculated values per OAR 333-064-0100. Cannabinoid values for plant matter samples are reported on a dry weight basis. Water activity action level is 0.65Aw. LOQ= Limit of Quantitation. NR=Not Reported.


Lab Director 11/22/22

Results pertain to submitted sample. [Redacted] makes no claims as to the consumer safety or other risks associated with any detected or non-detected amounts of any pesticides, solvents or other adulterants. This report shall not be reproduced, unless in its entirety, without written approval from [Redacted]. Samples were received in good condition and all QC samples met acceptance criteria of the method; data available upon request. Analytes accompanied by dagger (‡) are not within the scope of accreditation and are for informational purposes only.

.....
 CBG White
 N/A
 Sample Type : Hemp Flower


Certificate of Analysis

Sample : CE11020006-010
 Harvest/LOT ID: N/A

Batch# : N/A
 Sampled : 10/20/21
 Ordered : 10/20/21

Sample Size Received : 3 gram
 Total Weight/Volume : N/A
 Completed : 10/25/21 Expires: 10/25/22
 Sample Method : SOP-024





Terpenes

TESTED

Terpenes	LOQ(mg/g)	Result (mg/g)	Result	Terpenes	LOQ(mg/g)	Result (mg/g)	Result
TRANS-CARYOPHYLLENE	0.08	2.143	<div style="width: 100%; height: 10px; background-color: #28a745;"></div>	TERPINOLENE	0.08	<LOQ	<div style="width: 0%; height: 10px; background-color: #28a745;"></div>
(1R)-ENDO-(+)-FENCHYL ALCOHOL	0.08	0.126	<div style="width: 15%; height: 10px; background-color: #28a745;"></div>	LINALOOL	0.08	0.383	<div style="width: 48%; height: 10px; background-color: #28a745;"></div>
CAMPHOR	0.08	<LOQ	<div style="width: 0%; height: 10px; background-color: #28a745;"></div>	GERANIOL	0.08	<LOQ	<div style="width: 0%; height: 10px; background-color: #28a745;"></div>
(1R)-(+)-CAMPHOR	0.08	<LOQ	<div style="width: 0%; height: 10px; background-color: #28a745;"></div>	GAMMA-TERPINENE	0.08	<LOQ	<div style="width: 0%; height: 10px; background-color: #28a745;"></div>
(1S)-(-)-CAMPHOR	0.08	<LOQ	<div style="width: 0%; height: 10px; background-color: #28a745;"></div>	EUCALYPTOL	0.08	<LOQ	<div style="width: 0%; height: 10px; background-color: #28a745;"></div>
HEXAHYDROTHYMOL (L-MENTHOL)	0.08	<LOQ	<div style="width: 0%; height: 10px; background-color: #28a745;"></div>	(-)-ALPHA-BISABOLOL	0.08	0.841	<div style="width: 105%; height: 10px; background-color: #28a745;"></div>
TERPINEOL	0.08	0.172	<div style="width: 21%; height: 10px; background-color: #28a745;"></div>	(-)-ISOPULEGOL	0.08	<LOQ	<div style="width: 0%; height: 10px; background-color: #28a745;"></div>
NEROL	0.08	<LOQ	<div style="width: 0%; height: 10px; background-color: #28a745;"></div>	(-)-CARYOPHYLLENE	0.08	<LOQ	<div style="width: 0%; height: 10px; background-color: #28a745;"></div>
(+)-PULEGONE	0.08	<LOQ	<div style="width: 0%; height: 10px; background-color: #28a745;"></div>	OXIDE			
GERANYL ACETATE	0.08	<LOQ	<div style="width: 0%; height: 10px; background-color: #28a745;"></div>	ISOBORNEOL	0.08	<LOQ	<div style="width: 0%; height: 10px; background-color: #28a745;"></div>
ALPHA-CEDRENE	0.08	<LOQ	<div style="width: 0%; height: 10px; background-color: #28a745;"></div>	CAMPHERE	0.08	<LOQ	<div style="width: 0%; height: 10px; background-color: #28a745;"></div>
ALPHA-HUMULENE	0.08	0.63	<div style="width: 79%; height: 10px; background-color: #28a745;"></div>				
VALENCENE	0.08	<LOQ	<div style="width: 0%; height: 10px; background-color: #28a745;"></div>				
ALPHA FARNESENE	0.02	0.502	<div style="width: 251%; height: 10px; background-color: #28a745;"></div>				
BETA FAMESENE	0.059	1.6	<div style="width: 271%; height: 10px; background-color: #28a745;"></div>				
CIS-NEROLIDOL	0.08	<LOQ	<div style="width: 0%; height: 10px; background-color: #28a745;"></div>				
TRANS-NEROLIDOL	0.08	0.213	<div style="width: 266%; height: 10px; background-color: #28a745;"></div>				
GUAJOL	0.02	0.884	<div style="width: 442%; height: 10px; background-color: #28a745;"></div>				
(+)-CEDROL	0.08	<LOQ	<div style="width: 0%; height: 10px; background-color: #28a745;"></div>				
BETA-PINENE	0.08	0.085	<div style="width: 106%; height: 10px; background-color: #28a745;"></div>				
FENCHONE	0.08	<LOQ	<div style="width: 0%; height: 10px; background-color: #28a745;"></div>				
ALPHA-TERPINENE	0.08	<LOQ	<div style="width: 0%; height: 10px; background-color: #28a745;"></div>				
SABINENE HYDRATE	0.08	<LOQ	<div style="width: 0%; height: 10px; background-color: #28a745;"></div>				
BETA-OCIMENE, CIS-OCIMENE	0.012	<LOQ	<div style="width: 0%; height: 10px; background-color: #28a745;"></div>				
TRANS-BETA-OCIMENE	0.067	<LOQ	<div style="width: 0%; height: 10px; background-color: #28a745;"></div>				
(R)-(+)-LIMONENE	0.08	0.655	<div style="width: 819%; height: 10px; background-color: #28a745;"></div>				
(1S)-(+)-3-CARENE	0.08	<LOQ	<div style="width: 0%; height: 10px; background-color: #28a745;"></div>				
P-MENTHA-1,5-DIENE (ALPHA-PHELLANDRENE)	0.08	<LOQ	<div style="width: 0%; height: 10px; background-color: #28a745;"></div>				
BETA-MYRCENE	0.08	0.856	<div style="width: 1070%; height: 10px; background-color: #28a745;"></div>				
SABINENE	0.08	<LOQ	<div style="width: 0%; height: 10px; background-color: #28a745;"></div>				
A-PINENE	0.08	0.089	<div style="width: 112%; height: 10px; background-color: #28a745;"></div>				
Total (mg/g)		9.179	<div style="width: 100%; height: 15px; background-color: #28a745;"></div>				


Terpenes
TESTED

Analyzed by 12	Weight 1047g	Extraction date 10/21/21 03:10:26	Extracted By 12
Analysis Method - SOP-T.40.090		Reviewed On - 10/22/21 13:58:13	
Analytical Batch - CE000471TER			
Instrument Used : GCMS-QP2020 EID:0170			
Running On : 10/21/21 15:24:58			
Batch Date : 10/21/21 15:19:33			
Reagent	Dilution	Consums. ID	
	80		

Terpenoid profile screening is performed using GC-MS with Liquid Injection (Gas Chromatography - Mass Spectrometer) using Method SOP-T.40.091 Terpenoid Analysis Via GC-MS

This report shall not be reproduced, unless in its entirety, without written approval from . This report is an certification. The results relate only to the material or product analyzed. Test results are confidential unless explicitly waived otherwise. Void after 1 year from test end date. Cannabinoid content of batch material may vary depending on sampling error. IC In-control QC parameter, NC Non-controlled QC parameter, ND Not Detected, NA Not Analyzed, ppm Parts Per Million, ppb Parts Per Billion. Limit of Detection (LoD) and Limit Of Quantitation (LoQ) are terms used to describe the smallest concentration that can be reliably measured by an analytical procedure. RPD Reproducibility of two measurements. Action Levels are State determined thresholds variable based on uncertainty of measurement (UM) for the analyte. The UM error is available from the lab upon request. The "Decision Rule" for the pass/fail does not include the UM. The limits are based on F.S. Rule 64-4.310.

Lab Director
 State License #
 010-10166277B9D
 ISO Accreditation # 99861

Anthony Smith

 Signature

10/25/21

 Signed On