

## GENERAL LEDGER AND FINANCIAL REPORTING Microsoft Dynamics 365 Finance

### Overview

Microsoft Dynamics 365 Finance provides a full-featured General ledger solution with deep integrations with Office 365 and a powerful shared services model. In the General ledger module, you can setup a shared chart of accounts, have unlimited financial dimensions, define financial controls with journals and rules, and streamline your period end close with the Financial period close workspace. Analysis becomes easy with account balance list pages, drill down in Financial reporting and a comprehensive CFO workspace to view the state of the business.

#### CFO Overview

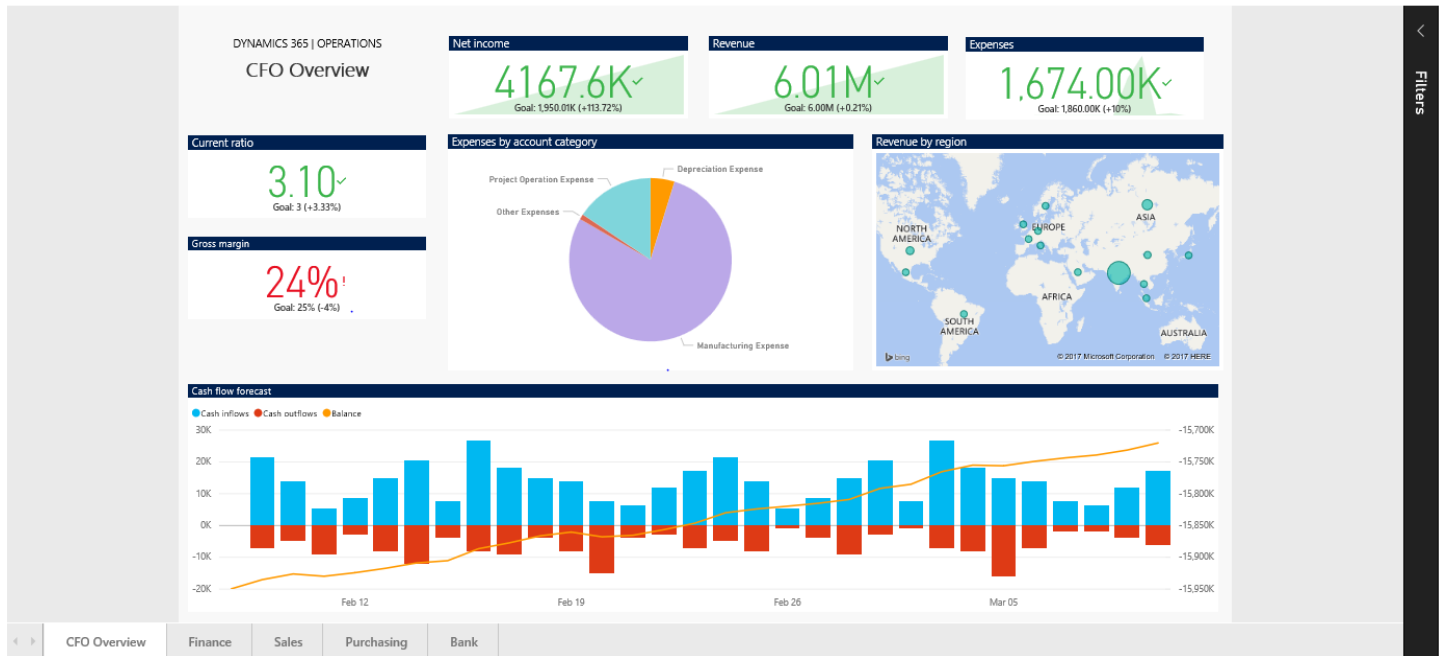
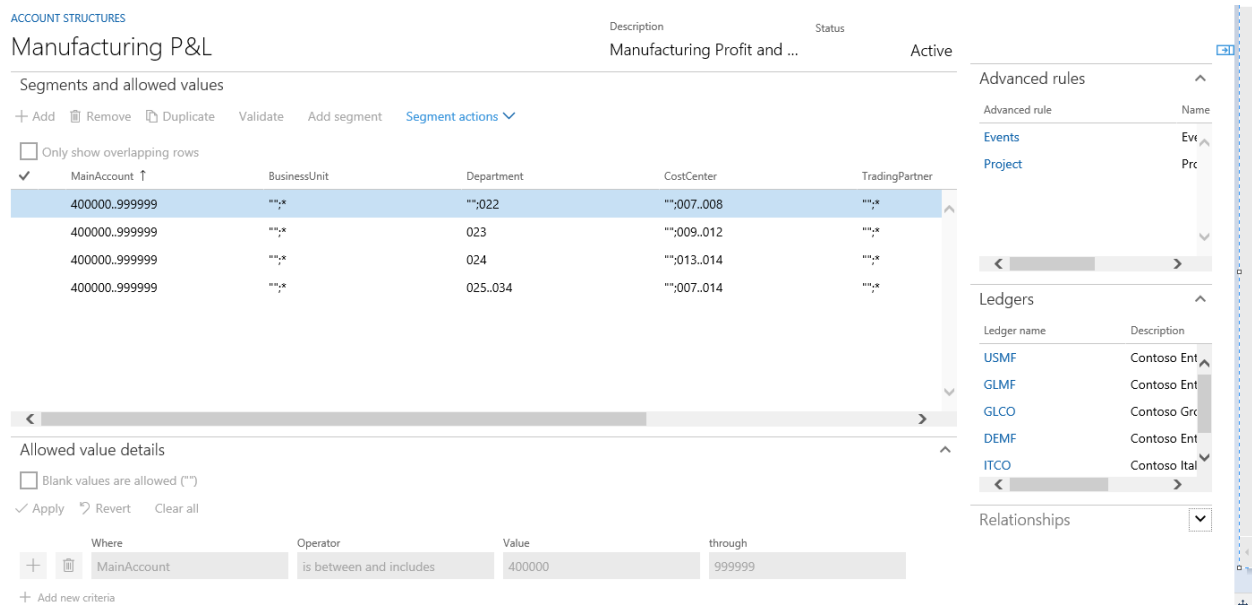


Figure 1: CFO Workspace

## Global setup

- **Chart of accounts** in general ledger can be shared across legal entities, or you can set up different charts based on statutory or line of business needs. A rule based accounting system allows you to define ranges, rules and if then criteria to make managing your changing financial dimensions and accounts seamless, saving time and costly mistakes.
- **Financial dimensions** can be defined as custom dimensions or entity backed dimensions, based on the needs of your business. By being able to define as many financial dimensions as your organization needs, you can pair the financial dimensions with the flexible account structures to have a powerful financial system.
- **Currencies** and exchange rate tables are shared across the legal entities. You can define the exchange rate type per legal entity and easily import your daily exchange rates using Foreign Exchange Rates Powered by Oanda, or import them using Office 365.
- **Intercompany accounting** is used to define the legal entities that can transact using intercompany journals. You have control over which company can post the transactions and your due to and due from accounts.



**ACCOUNT STRUCTURES**  
Manufacturing P&L

Description: Manufacturing Profit and ...  
Status: Active

Segments and allowed values

+ Add Remove Duplicate Validate Add segment Segment actions

Only show overlapping rows

MainAccount	BusinessUnit	Department	CostCenter	TradingPartner
400000.999999	"";*	"";022	"";007.008	"";*
400000.999999	"";*	023	"";009.012	"";*
400000.999999	"";*	024	"";013.014	"";*
400000.999999	"";*	025.034	"";007.014	"";*

Allowed value details

Blank values are allowed ("")

✓ Apply Revert Clear all

Where	Operator	Value	through
MainAccount	is between and includes	400000	999999

+ Add new criteria

**Advanced rules**

Advanced rule	Name
Events	Evt
Project	Prc

**Ledgers**

Ledger name	Description
USMF	Contoso Ent
GLMF	Contoso Ent
GLCO	Contoso Gr
DEMF	Contoso Ent
ITCO	Contoso Ital

**Relationships**

Figure 2: Account Structures

## Multi-company financial processes

- **Global general journals** enter and post all your journals across company in a single location, or from the General journal processing workspace. Complete the experience in the application with a guided experience from your rule based account structures, or complete the experience in Excel with full lookup and publishing capabilities.
- **Foreign currency revaluation** lets you define the exchange rate type by main account and simulate your foreign currency evaluation across multiple companies at a single time. Review the changes in the application or Excel, and choose whether to post for one or more companies.
- **Year-end close** and managing your ledger calendars is made easy by being able to group or pick and choose the companies that require processing, allowing you to focus on more critical tasks during your day.
- **Financial period close** is streamlined in a single workspace. Users can view what tasks are assigned to them, see when they are due and what the dependencies are. Accounting managers have visibility into all the tasks required for a close across all the companies.

Financial period close

Q1 2017

Summary

- 315 Past due tasks
- 0 Today's remaining tasks
- 0 Today's blocked tasks
- 315 All remaining tasks

Tasks and status

Status by company: All tasks | USMF

Status by area

Status by person

Task list

Completed	Task	Company	Responsible	Due date	Completed
<input type="checkbox"/>	Add new accounts and dimensions	USMF	Phyllis Harris	3/31/2017 05:00:00 PM	
!	Update account posting rules	USMF	Phyllis Harris	3/31/2017 06:00:00 PM	
!	Post accrual transactions	USMF	Cassie Hicks	4/5/2017 12:00:00 AM	
!	Process allocations	USMF	Cassie Hicks	4/5/2017 12:00:00 AM	
!	General journal adjustments	USMF	Cassie Hicks	4/6/2017 05:30:00 PM	
!	Currency revaluation	USMF	Cassie Hicks	4/6/2017 06:30:00 PM	
!	Stop period	USMF	Phyllis Harris	4/6/2017 07:00:00 PM	
!	Balance sheet	USMF	Phyllis Harris	4/8/2017 12:00:00 AM	
!	Detailed trial balance	USMF	Phyllis Harris	4/8/2017 12:00:00 AM	
!	Income statement	USMF	Phyllis Harris	4/8/2017 12:00:00 AM	
!	Refresh budget forecast	USMF	Phyllis Harris	4/10/2017 07:00:00 PM	
!	Budget vs. Actual review	USMF	Phyllis Harris	4/10/2017 08:00:00 PM	
!	Review CFO Workspace	USMF	Phyllis Harris	4/10/2017 09:00:00 PM	

Figure 3: Financial period close workspace

## Financial reporting and analysis

Financial reporting is easily managed by the accounting and finance department by out of the box reports with full drill down to transaction level across all companies. Modifications are simple in the Financial reporting designer that allows you to create custom designs and add reporting hierarchies, all without asking the IT department for help.

Reporting Tree Show Zoom Publish Currency Export Report Options Print

Search in report Previous Next

*Contoso Entertainment  
CONSOL  
For the Three Months Ending Friday, March 31, 2017*

Current Month				YTD
January	February	March		2017
4,452,805	4,093,628	4,005,684	Sales	12,552,116
1,652	131,130	2,489	Other Income	135,272
<b>4,454,457</b>	<b>4,224,758</b>	<b>4,008,173</b>	<b>Total Revenue</b>	<b>12,687,388</b>
593,389	428,381	610,629	Cost of Good	
<b>3,861,068</b>	<b>3,796,377</b>	<b>3,397,544</b>	<b>Gross Profit</b>	
115,733	120,260	78,945	Manufacturin	
179,709	81,199	80,134	Selling and A	
100,705	85,915	100,705	Salary Expens	
23,545	23,545	23,545	Other Emplo	
1,626,065	326,700	57,370	Vehicle, Build	
5,689	3,439	553	Travel and Er	
26,506	5,370,697	26,821	Other Expens	
<b>2,078,353</b>	<b>6,011,756</b>	<b>368,083</b>	<b>Total Oper</b>	<b>12,000,882</b>
1,652	131,130	2,489	Interest Incom	
<b>1,784,367</b>	<b>(2,084,249)</b>	<b>3,031,950</b>	<b>Net Operat</b>	

Reporting Tree Show Zoom Publish Currency Export Report Options Print

Contoso Entertainment  
SM  
Months Ending Friday, March 31, 2017

YTD	2017
11,958,505	12,687,388
396,710	

SALES & MARKETING

- Contoso Retail - France Sales & Marketing 36,128
- Contoso Retail - USA Sales & Marketing 32,656
- Contoso Retail Sales & Marketing 5,765
- and Administration Expenses 45,270
- Contoso Manufacturing - USA - SM 421

### Transactions for 600150-001-022--

Show unsettled transactions only

OVERVIEW GENERAL

Journal number	Voucher	Date ↑	Year closed	Type	Ledger account	Account name	Description	Curre
000768	APIN000004	1/18/2017		Operating	600150-001-022--	Other Miscellaneous Expenses	USC,	
000762	APIN000002	2/9/2017		Operating	600150-001-022---	Other Miscellaneous Expenses	USC	
000790	4000	2/9/2017		Operating	600150-001-022---	Other Miscellaneous Expenses	USC	

Figure 4: Financial reports with drill down to transaction level detail

## About Unify Dots

Unify Dots helps you connect the Dots by providing solutions that enable digital transformation. Unify Dots specializes in ERP, CRM, Customer Engagement, Field Service, Project Operations, Human Resources, Talent Management, Ecommerce and Point of Sale solutions.



Unify Dots has local presence in Asia Pacific, Australia, New Zealand, Europe, North America and operate in a global scale with a local touch. Unify Dots is also committed to improving the world and has pledged donating at least 25% of its profit towards the case of helping educate children from low-income families in developing countries.

## Contact Unify Dots

Email us at [info@unifydots.com](mailto:info@unifydots.com) to get more information on implementing Microsoft Dynamics 365 Finance or contact us by calling one of our office locations or visit us at <https://unifydots.com>

**Australia:** +61 2 4504-8307

**Malaysia:** +60 3 9212 6121

**New Zealand:** +64 9801-1069

**Philippines:** +63 2 8271 2458

**Singapore:** +65 3165-0911

**United Kingdom:** +44 20 3885 0765

**United States of America:** +1 206 452-7498