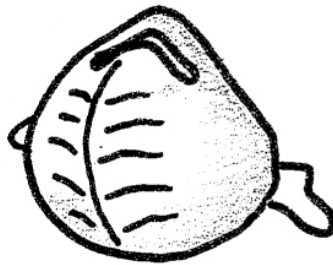


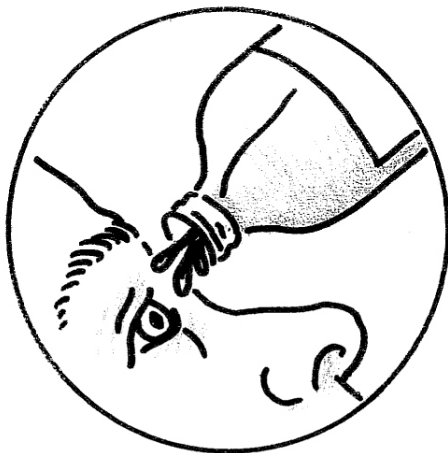
PERSONAL PROTECTION

The following PPE is recommended when fitting a Cure It roof.

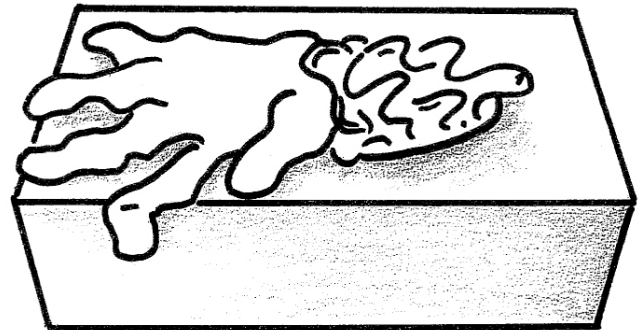
Dust mask: To be worn while sanding down the roof.



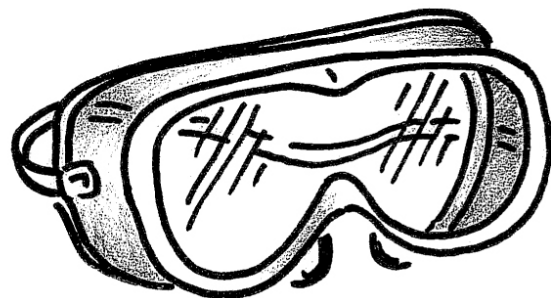
Safety gloves: To be worn while fitting boards / trims.



Eye wash: To be kept close to hand during installation in case of splashes of liquid materials to the eyes.



Latex gloves: To be worn while mixing / applying roofing resin / topcoat.



Safety goggles: To be worn when using hardener / mixing resin / topcoat.