

SELNA

SOUTHEAST LOUISIANA
NURSERY ASSOCIATION

**SOUTHEAST
LOUISIANA
WHOLESALE
PLANT
LOCATOR LIST**

2017

www.selna.org

An extensive listing of plants
grown and sold by wholesale nurseries
in St. Tammany, Washington and
Tangipahoa parishes and funded by
Southeast Louisiana Nursery Association (SELNA).

For membership or other information about
Southeast Louisiana Nursery Association contact:
Whitney Wallace, SELNA Secretary
PO Box 848
Amite, LA 70422
(985) 748-9381
wwallace@agcenter.lsu.edu

Revised May 2017

TABLE OF CONTENTS

Name	List & Map Number	Page
Nurseries		
Arcola Nursery	42	1
Bamboo Co. Nursery	33	1
Blackwell's Nursery	2	1
Bracy's Nursery	3	2
Brumfield Nursery	4	2
Dub's Nursery	35	2
Folsom Nursery, Inc.	9	3
Frazier's Nursery	36	3
Jenkins Farm & Nursery, L.L.C	17	3
LaCroix Nursery, Inc.	18	4
Louisiana Growers	19	4
Mark Jenkins Nursery	21	4
Mizell's Camellia Hill Nursery.....	43	5
Norris Nursery	23	5
Philip-Pine Indy Tree Farm Nursery	41	5
Schilling Greenhouses, Inc.	24	6
Seal Nursery & Landscaping, Inc.	26	6
Stelz Nursery, Inc.	29	6
The Topiary Nursery	30	7
Westfarms Nursery, Inc.	31	7
Windmill Nursery, Inc.	32	7
Plant Index		8
Common Names Index		42
Allied Members		
Graco Fertilizer Company		53
Keeling Company.....		53
Map		Centerfold

PLANT LOCATOR LIST NURSERIES

Arcola Nursery

42

12355 Arcola Road
Roseland, La, 70456

Mike DeLatte

(985) 517-3745

Member: SELNA & LNLA

arcolanursery@hotmail.com

33

Bamboo Co.
Nursery

Alain D. Flexer Esq.
16483 Fisher Rd.
Franklinton LA, 70438
985.789.2584
www.moso.us



Field Grown
Trees & Shrubs

2

Container
Trees & Shrubs

985-796-5313
985-630-6289 Rosanne
601-596-6720 Bo



North Factory Road
83067 Hwy 1080
Folsom, LA 70437

Email: blackwellsnursery@yahoo.com



64624 Dummyline Rd.
Amite, LA 70422

800/899-4716

985/748-4716

Fax 985/748-9955

Email: sales@bracys.com

www.bracys.com

3

Container-grown trees & shrubs for the South

Brumfield Nursery, Inc.

P.O. Box 653, 85349 Hwy. 450, Folsom, LA 70437

4

B & B

Trees & Shrubs

Large Containers

985-796-0687

FAX 985-796-9969

Dub's Nursery

29007 Otto Passman e Lawrence Creek Rd.
PO Box 85 Franklinton, LA 70438

35

**Container Crape Myrtles, Trees,
Ornamentals, Ground Covers**

Phone (985)839-4133

(985) 515-4104

(985) 515-3069

Fax (985)795-7998

Dub Jenkins

Nancy Jenkins

Folsom Nursery, Inc.

P.O. Box 580, 14425 Hwy. 40 East, Folsom, LA
70437

9

Containerized Azaleas
Woody Ornamentals
Groundcovers – Irises

'We Specialize In Large Container Azaleas.'

PHONE & FAX 985-796-3488
Pat Newman -- CELL: 985-630-1335
folsomnursery33@aol.com

FRAZIERS' NURSERY

Taylor Frazier

25336 Taylor Creek Road
Amite, La. 70422

36

PHONE: (504) 957-4678

Jenkins Farm & Nursery, L.L.C.

62188 Dummyline Road, Amite, LA 70422

Field and Container Grown Trees & Shrubs
Parsley Hawthorn and Large Japanese Magnolias
Great Selection of Azaleas, Including Fall Bloomers

17

985-748-7746
FAX 985-748-8219

LaCroix Nursery, Inc.

21324 LaCroix Lane, Kentwood, LA 70444

18



*Premium Field Grown
Trees & Shrubs*

985-229-4570

FAX: 985-229-6247

Email: lacroixnursery@hughes.net

19



63279 Lowery Road, Amite, LA 70422

We grow to your order.

Diverse Selection of
Native & Adapted Species

985-747-0510

Cell: 985-748-1122

www.lanativeplants.com

Email: rick@lanativeplants.com

Most Major Credit Cards Accepted

Mark Jenkins Nursery

Mail – 301 Hickory St.

Physical Location - 62188 Dummyline Rd.

Amite, LA 70422

21

Ground Covers – Palms – Ferns
Semi – Tropicals & Shrubs

985-748-6177 - FAX 985-748-8219

MIZELL'S CAMELLIA HILL
NURSERY

43

Specializing in Camellias

12497 Josephs Road
Folsom, LA 70437
(985) 796-4304 – Office
(985) 630-2688 – Cell
(985) 796-3209 - Fax



www.mizellscamelliahillnurseries.com
email: mizellscamelliahillnursery@AOL.com

David & Mary Mizell

P.O. Box 1005
13129 Verger Rd.
Folsom, LA 70437
norrisnursery.com

Container & Field
Trees & Shrubs
Groundcovers
Bamboo
Windmill Palms

23



985-796-3040
Cell: 985-264-2488
Fax: 985-796-9671

Email: flht952001@acadiacom.net



Like our stone work
on Facebook
"Philip Pine"
Steve (Cowboy)

Garden Center
Big Trees
Water Native Plants
Patio Stone Works

41

PHILIP-PINE INDY
Tree Farm Nursery

Open 7 Days
7:00 a.m. to 5:00 p.m.

18035 Hwy 25
Franklinton, LA 70438

Frank Chokilo 845-988-6568
Steve (Cowboy) 985-285-3677

SCHILLING GREENHOUSES, INC.

2486 SOUTH COLUMBIA ST., BOGALUSA, LA 70427

BLOOMING PLANTS • FOLIAGE
bedding plants

24

Email: sales@3plants.com

985-735-9333
FAX 985-732-1662

Seal Nursery & Landscape, LLC

42174 Seal Road, Franklinton, LA 70438

Nursery Stock, Trees, Shrubs, Fruit Trees,
Bagged Cypress Mulch

26

Billy Cell: 985-515-2004 985-839-5701
Mattie Cell: 985-630-1190 FAX 985-839-5900
Email: mseal47@yahoo.com

Stelz Nursery, Inc.

19238 Million Dollar Rd., Covington, LA 70435

Annuals, Perennials, Vegetables & Herbs
Foliage & Flowering Hanging Baskets

29

Wholesale Only
Delivery to Most Locations

Phone 985-892-9313 – FAX 985-893-7429

Email: StelzNursery@aol.com
www.stelznursery.citymax.com

The Topiary Nursery

83138 Holiday Rd., Folsom, Louisiana 70437

Mature Shaped Ornamentals

985-796-9653

Cell: 703-577-9322

topiarynursery@aol.com

30

Westfarms Nursery, Inc.

13529 Hwy. 450, Franklinton, La. 70438

Daylilies – Azaleas – Camellias

Ornamental Shrubs in 1-15 gallon Containers

31

985-839-5713

FAX 985-839-5713

Windmill Nursery, Inc.

P.O. Box 400, 12398 Hwy. 25, Folsom, LA 70437

Container Grown Trees – Shrubs

Azaleas – Ground Covers

Well-stocked Wholesale Pick Up Center
for Garden Centers & Landscapers

Email: david@windmillnurseryllc.com

www.windmillnurseryllc.com

Phone 800-535-1887 • Fax 800-370-3854

32

PLANT INDEX

- A -

- Abelia chinensis*** (Chinese Abelia) – 32, 41
- Abelia grandiflora*** (Glossy Abelia) – 2, 3, 21, 31, 32, 41
'Canyon Creek' – 17, 31, 32, 35
'Francis Mason' – 35
'Hopley's' – 32
'Kaleidoscope' – 32
'Mardi Gras' – 32
'Rose Creek' – 3, 17, 31, 32
- Abutilon pictum*** (Flowering Maple) – 23
- Acalypha pendula*** (Chenille) – 31
- Acer*** (Maple) – 2, 3, 17, 18, 19, 21, 23, 26, 31, 32, 35, 36, 41
- Acer barbatum*** (Southern Sugar Maple, Florida Maple) – 31, 41
- Acer buergerianum*** (Trident Maple) – 41
- Acer palmatum*** (Japanese Maple) – 3, 17, 19, 21, 23, 26, 31, 32, 35, 41, 42
'Atropurpureum' – 17, 21, 31, 35
'Bloodgood' – 31, 35, 41
'Coral Bark' – 32, 35
'Tamukeyama' – 31, 35
- Acer rubrum*** (Red Maple) – 2, 3, 17, 18, 19, 21, 31, 32, 35, 36, 41, 43
- Acer rubrum* var. *drummondii***
(Drummond Red Maple, Red Swamp Maple) – 2, 3, 17, 18, 19, 21, 23, 26, 32, 35, 36, 41
- 'Brandywine' – 35
'Florida Flame' – 35, 36
- Acer saccharinum*** (Silver Maple) – 4
- Acer saccharum* ssp. *'Floridanum'*** (Sugar Maple) – 17, 19
- Acer saccharum* ssp. *leucoderme*** (Chalk Bark Maple) – 17, 19, 23
- Acer truncatum*** (Purpleblow Maple, Shantung Maple) – 19
- Achillea millefolium***
(Common Yarrow) – 21
'Paprika' – 29, 32, 42
- Adiantum capillus-veneris***
(Maidenhair Fern) – 21, 24
- Aechmea species***
(Bromeliads) – 24, 41
- Aesculus parviflora***
(Bottlebrush Buckeye) – 17, 41
- Aesculus pavia*** (Red Buckeye) – 17, 19
- Agapanthus africanus***
(Agapanthus, Blue Lily of the Nile) – 2, 3, 4, 9, 23, 31, 32, 35, 41, 42
'Elaine' – 2, 3, 9, 21, 23, 41
'Ella Mae' – 3, 21, 41
'Getty White' – 35, 42
'Mood Indigo' – 2, 9, 32, 41
'Peter Pan' – 3, 21, 32, 41
'Queen Mum' – 3, 32, 41
- Agarista populifolia*** (Florida Leucothoe) – 17, 32
- Agastache foeniculum***
(Anise hyssop) – 29
- Agave americana*** (Century Plant) – 35, 42

- ‘Blue Glow’ – 3, 41
- Aglaonema* sp.** (Chinese Evergreen) – 24
- Ajuga reptans*** (Ajuga, Bugle Weed) – 9, 21, 32, 41
- Allium cepa*** (Onions)
‘Evergreen Hardy Green Bunching’ – 29
- Allium sativum*** (Garlic) – 29
- Allium schoenoprasum*** (Chives) – 29, 41
- Alocasia macrorrhiza***
Elephant Ear) – 21, 24, 31, 41
‘Jurassic Dark’ – 3
- Aloe barbadensis*** (Aloe Vera) – 24, 41
- Alpinia japonica*** (Japanese Ginger) – 21, 41
- Alpinia mutica*** (Small Shell Ginger) – 21, 41
- Alpinia zerumbet*** (Shell Ginger) – 3, 9, 21, 23, 31, 32, 35, 41
- Alsophila cooperi*** (Tree Fern) – 21, 41
- Amsonia hubrechtii*** – 17
- Andropogon gerardii*** (Big Bluestem) – 19
- Andropogon glomeratus*** (Bushy Bluestem) – 19
- Anethum graveolens*** (Dill) – 29, 41
- Angelonia***
‘Angelmist White’ – 3, 24, 29, 32
- Angelonia* x** ‘Serena’ – 29
‘Serena Purple’ – 3, 32
- Anthriscus cerefolium*** (Chervil) ‘Vertissimo’ – 29
- Anthurium*** – 24
- Antigonon leptopus*** (Rose of Montana, Coral Vine) – 3
- Antirrhinum majus*** (Snapdragon) – 29, 41
- Antirrhinum mujus* x** ‘Candy Showers Orange’ – 29
‘Candy Showers Purple Deep’ – 29
‘Candy Showers Rose’ – 29
‘Candy Showers Yellow’ – 29
‘Rocket Golden’ – 29
‘Snapshot Mix’ dwarf – 29
‘Snapshot Plumblossom’ dwarf – 29
‘Snapshot Purple’ dwarf – 29
‘Snapshot Red’ dwarf – 29
‘Snapshot Rose’ dwarf – 29
‘Snapshot White’ dwarf – 29
‘Snapshot Yellow’ dwarf – 29
‘Sonnet Crimson’ – 29
‘Sonnet Mix’ – 29
‘Sonnet Orange Scarlet’ – 29
‘Sonnet Rose’ – 29
‘Sonnet White’ – 29
‘Sonnet Yellow’ – 29
- Aphelandra squarrosa*** (Zebra Plant) – 24
- Apium graveolens dulce*** (Celery) ‘Conquistador’ – 29
- Aquilegia* x** ‘Swan Blue and White’ (Columbine) – 29
‘Swan Pink and Yellow’ – 29
‘Swan White’ – 29
‘Swan Yellow’ – 29
- Aralia***
‘Balfour’ – 24, 32, 41
- Araucaria heterophylla*** (Norfolk Island Pine) – 24, 41
- Arborvitae plicata***
‘Green Giant’ – 3, 18, 32, 41, 42

Ardisia crenata (Christmas Berry) – 7, 9, 21, 24, 31
Ardisia japonica (Japanese Ardisia) – 7, 9, 21, 31, 32, 35, 41
Arecastrum romanzoffianum (Queen Palm) – 21, 32
Artemisia dracunculus (Tarragon) – 29, 41
Arundia graminifolia (Bamboo Orchid) – 31
Arundinaria funghomii (Bamboo) – 41
Arundinaria sp. (Bamboo) – 21, 31, 33, 41
Asarum arifolium (Native ginger) – 21, 41
Asclepias curassavica (Blood Flower, Annual Milkweed)
 'Silky Gold' – 32
 'Silky Red' – 32
Asimina triloba (Pawpaw) – 3, 17, 19, 41
Asparagus densiflorus (Asparagus Fern) – 3, 9, 21, 24, 31, 32, 35
Asparagus densiflorus (Asparagus Fern)
 'Sprengerii' – 9
Asparagus meyeri – 41
Aspidistra elatior (Cast Iron Plant) – 2, 3, 4, 9, 21, 23, 30, 31, 32, 35, 41, 42
Asplenium nidus (Bird's Nest Fern) – 24, 41
Athyrium filix-femina (Lady Fern) – 17, 19, 21
Athyrium niponicum 'Pictum' (Japanese Painted Fern) – 3, 21, 32
Aucuba japonica (Japanese Aucuba) – 2, 3, 17, 21, 31, 32, 35, 41

'Gold Dust' – 35
 'Serratifolia' – 17

- B -

Bacopa – 29, 32
Bambusa sp. (Bamboo) – 3, 4, 21, 31, 33, 41
Bambusa davidii (Bamboo) – 3, 31, 41, 42
Bambusa dolichomerithalla (Bamboo) – 41
Bambusa eutuldoide
 'Viridivittata' (Bamboo) – 34, 41
Bambusa floribunda (Bamboo) – 21, 31
Bambusa multiplex (Hedge Bamboo) – 3, 21, 23, 31, 32, 33, 35, 41
 'Alphonse Karr' – 21, 32
 'Golden Goddess' – 21, 32, 41
 'Riviereorum' (Chinese Goddess) – 21,
Bambusa oldhamii (Giant Timber Bamboo) – 21, 33, 41
Bambusa tuldoides (Punting Pole Bamboo) – 41
Bambusa vulgaris 'Vittata' (Painted Bamboo) – 41
Baptisia alba (White Wild Indigo) – 19
Baptisia australis (Blue False Indigo) – 17
 'Carolina Midnight' – 17
 'Purple Smoke' – 17
Begonia semperflorens cultorum (Wax-Leaf Begonia) – 3, 24, 29, 32, 41
 'Angel Wing' – 24, 29, 32
 'Baby Wing' – 29, 32
Begonia semperflorens cultorum x 'Cocktail

- Gin' – 29
 'Cocktail Tequila' – 29
 'Cocktail Vodka' – 3, 29
 'Cocktail Whiskey' – 29
Berberis (Barberry) – 32, 41
 'Crimson Pygmy' – 41
Berberis thunbergii
 (Japanese Barberry) – 3,
 41
Beta vulgaris (Beet) 'Red
 Ace' – 29
Beta vulgaris var. cicla
 (Swiss Chard) – 29
Betula nigra (River Birch)
 – 17, 21, 31, 32, 35, 36, 41
 'Sugarland' – 19
Bletilla striata (Chinese
 Ground Orchid) – 41
Borago officinalis (Borage) –
 29
Bougainvillea spectabilis
 (Bougainvillea) – 24, 21, 32
Brassaia actinophylla
 (Schefflera) – 9, 24
Brassaia arboracola (Dwarf
 Schefflera) – 21, 24, 41
Brassica juncea (Mustard)
 'Florida Broadleaf' – 29
 'Red Giant' – 29
Brassica oleracea
 (Ornamental Kale and
 Cabbage) – 'Dynasty Pink'
 – 29
 'Dynasty Red' – 29, 41
 'Dynasty White' – 29
 'Emperor Red' – 29, 41
 'Emperor White' – 29
 'Kamone White' – 29, 41
 'Pigeon White' – 29
 'Redbor' – 29, 41
Brassica oleracea var.
acephala (Collards)
 'Georgia' – 29
Brassica oleracea var.
acephala (Kale) 'Toscano' –
 29
Brassica oleracea var.
botrytis (Cauliflower)
 'Snow Crown F1' – 29
Brassica oleracea var.
capitata (Cabbage)
 'Chinese Blues' (Napa) –
 29
 'Early Platinum Dynasty' –
 29
 'Ruby Perfection' – 29
 'Stonehead F1' – 29
Brassica oleracea var.
gemmifera (Brussels
 sprouts) 'Jade Cross E' –
 29
Brassica oleracea var. italica
 (Broccoli)
 'Packman F1' – 29
 'Aspabroc F1 (Broccolini) –
 29
Brassica rapa (Pak Choi)
 'Toy Choy' – 29
 'White F1 Hybrid' – 29
Brugmansia sp – 32
Brugmansia arborea (Angel's
 Trumpet) – 21, 41
Brunfelsia pauciflora
 (Yesterday, Today and
 Tomorrow) – 9, 21, 31, 32
 'Magnifica' – 32
Buddleia alternifolia
 (Butterfly Bush) – 3, 32, 41
Buddleia davidii (Butterfly
 Bush) – 17, 21, 31, 35
 'Black Knight' – 35
 'Blue Chip' – 32
 'Griffin's Blue' – 41
 'Miss Molly' – 32
 'Pink Delight' – 31
 'Potter's Purple' – 17
 'Purple Haze' – 32
 'Tutti Fruitti' – 32

Butia capitata (Jelly or Pindo Palm) – 21

Buxus harlandii (Harland Boxwood) – 9

Buxus japonica (Japanese Boxwood) – 3, 9, 21, 30, 31, 32, 35, 41, 42, 43

***Buxus microphylla* var.**

koreana (Boxwood) – 18, 21, 30, 31, 35, 41

Buxus microphylla japonica

(Japanese Boxwood) – 2, 3, 9, 21, 26, 30, 31, 32, 35, 41, 43

‘Baby Gem’ – 32

‘Orlando’ – 35

‘Winter Gem’ – 32

‘Winter Green’ – 3, 4, 9, 18, 21, 31, 32, 35, 41, 42, 43

- C -

Caladium x hortulanum

(Caladium) – 24, 29

Calamagrostis x acutiflora

(Feather Reed Grass) – 32

Calathea picturata – 24

Calendula officinalis

(Calendula) – 29

‘Bon Ton’ Mix – 29

‘Bon Ton’ Yellow – 29

Calibrochoa x

‘Cabaret’ – 24

‘Cabaret Deep Blue’ – 29

‘Cabaret Mix’ – 29

‘Cabaret Rose’ – 29

‘Cabaret Scarlet’ – 29

‘Cabaret White’ – 29

‘Cabaret Yellow’ – 29

‘Can Can Terracotta’ – 29

Callicarpa americana

(American Beautyberry) – 17, 19, 41

Callistemon citrinus (Lemon Bottlebrush) – 17, 31

‘Little John’ – 21, 32

‘Woodlander’s Hardy’ – 17

Callistemon rigidus

(Bottlebrush) – 3, 21, 31, 32, 35, 36, 41

Calycanthus floridus (Sweet

Shrub, Carolina Allspice) – 17, 19

Camellia cuspidata Camellia)

– 9, 21, 41

Camellia hiemalis (Camellia)

– 19, 32, 41, 42, 43

‘Martha Sims’ – 19, 31

‘Shi-Shi Gashira’ – 2, 3, 4, 9, 21, 23, 31, 32, 35, 41, 42, 43

Camellia japonica (Camellia)

– 3, 17, 21, 23, 26, 31, 32, 41, 42, 43

‘Alba Plena’ – 43

‘Allyne Brothers’ (white) – 19, 23

‘Brushfield’s Yellow’ – 42

‘Carters Sunburst’ – 43

‘Debutante’ – 42, 43

‘Dr. Tinsley’ – 43

‘Governor Mouton’ – 43

‘Gunsmoke’ – 31, 43

‘Jacks’ – 42

‘Kramers Supreme’ – 43

‘La Peppermint’ – 42, 43

‘Lady Clare’ – 43

‘Marie Bracey’ – 43

‘Nina Avery’ – 43

‘Pink Perfection’ – 43

‘Prince Eugene Napoleon’ – 21, 43

‘Professor Charles

Sargent’ – 31, 42, 43

‘Purple Dawn’ – 7, 19, 21, 23, 31, 32, 43

‘Rose Dawn’ – 43

‘Royal Velvet’ – 31, 32, 43

‘Sara Frost Pink’ – 19, 23, 31, 32, 43

- ‘Seafoam’ – 31, 43
 ‘Taylors Perfection’ – 31, 43
 ‘White Empress’ – 43
- Camellia sasanqua***
 (Sasanqua) – 3, 4, 9, 17, 18, 19, 21, 23, 26, 30, 31, 32, 35, 41, 42, 43
 ‘Apple Blossom’ – 41, 43
 ‘Bonanza’ – 3, 32, 43
 ‘Cotton Candy’ – 3, 4, 23, 31, 32, 35, 41, 43
 ‘Daydream’ – 32, 35, 43
 ‘Dazzler’ – 43
 ‘Hana-Jiman’ – 43
 ‘Kanjiro’ – 3, 4, 21, 23, 31, 32, 35, 43
 ‘Leslie Ann’ – 19, 31, 32, 35, 42, 43
 ‘Maiden’s Blush’ – 3, 4, 18, 21, 23, 31, 32, 35, 43
 ‘Marti’ – 19
 ‘Mine-no-yuki’ – 21, 31, 32, 35, 41, 43
 ‘October Orchid’ – 3, 32, 41
 ‘October Snow’ – 32
 ‘Pink Snow’ – 4, 9, 17, 21, 23, 32, 35, 43
 ‘Porcelain’ – 19, 31
 ‘Reverend Ida’ – 23
 ‘Showa-No-Sakae’ – 32, 41, 43
 ‘Snow on the Mountain’ – 42
 ‘Sparkling Burgundy’ – 3, 4, 17, 21, 23, 26, 31, 32, 41, 42, 43
 ‘Winter’s Snowman’ – 43
 ‘Yuletide’ – 3, 4, 19, 21, 23, 31, 32, 35, 41, 42, 43
- Camellia sinensis*** (Tea Camellia) – 41, 43
- Camellia splendens***
 (Camellia) – 7, 9, 31, 41
- Camellia x lutchuensis*** – 17
- ‘Quintessence’ – 17
- Canna indica*** (Canna) – 17, 21, 32, 41
 ‘Pretoria’ – 3
 ‘Tropical Red’ – 3, 32
 ‘Tropical’ series – 3, 32
- Capsicum annuum*** (Pepper)
 ‘Aristotle F1 Green Bell’ – 29
- Capsicum frutescens***
 (Ornamental Pepper) – 24, 29
- Carex jooarii*** (Cypress Swamp Sedge) – 19
- Carpinus caroliniana***
 (Ironwood, Hornbeam) – 17, 19
- Carum carvi*** (Caraway) – 29
- Carya aquatica*** (Water Hickory) – 17, 19
- Carya illinoensis*** (Sweet Pecan) – 3, 17, 19, 31, 32, 41
- Carya tomentosa*** (Mockernut Hickory) – 17
- Cassia corymbosa*** (Cassia) – 35
- Cassia splendida*** (Golden Wonder, Cassia) – 3, 21, 32
- Catalpa bignonioides***
 (Southern Catalpa) – 17, 31, 41
- Celosia argenta*** (Cock’s Comb) – 29
- Celtis laevigata*** (Hackberry) – 17, 19
- Cephalanthus occidentalis***
 (Buttonbush) – 17, 19, 21
- Cephalotaxus harringtonia***
 (Harrington Plum-Yew)
 ‘Yewtopia’ – 32
 ‘Prostrata’ – 32
- Ceratostigma lumbaginooides***

- (Plumbago) – 29, 32
- Cercis canadensis*** (Redbud)
– 3, 17, 21, 32, 35, 41,
43
‘Forest Pansy’ – 3, 41
- Cercis reniformis*** (Chinese
Redbud) – 3, 41
- Cestrum nocturnum*** (Night
Blooming Jessamine) – 9,
21
- Chaenomeles speciosa***
(Flowering Quince) – 3,
17, 21, 31, 32, 41
- Chamaecyparis obtuse***
(Hinoki False Cypress,
Southern Lace) – 31
‘Crippsii’ – 31
- Chamaedorea elegans***
(Neanthe Bella Palm) – 24
- Chamaedorea erumpens***
(Bamboo Palm) – 24
- Chamaedorea microspadix***
(Hardy Bamboo Palm) – 21
- Chamaerops humilis***
(Mediterranean Fan Palm)
– 21
- Chasmanthium latifolium***
(Inland Sea Oats) – 19, 31,
41
- Chasmanthium sessiliflorum***
(Longleaf Woodoats) – 19
- Chenopodium ambrosioides***
(Epazote) – 29
- Chicorium intybus*** (Chicory)
– 29
- Chimonobambusa***
marmorea (Bamboo)
‘Variegata’ – 33, 41
- Chimonobambusa***
quadrangularis (Square
Bamboo) (Houchiku) –
41
- Chionanthus retusus***
(Chinese Fringe Tree) –
17, 31, 41
- Chionanthus virginicus***
(Grancy Graybeard) – 17,
19, 26, 31, 32, 35, 41
- Chlorophytum comosum***
(Airplane Plant, Spider
Plant) – 24
- Chrysanthemum x***
morifolium
(Chrysanthemum) – 24
‘Beth Purple’ – 29
‘Bonnie Red’ – 29
‘Dazzling Stacy’
‘Orange/Red’ – 29
‘Dawn Yellow’ – 29
‘Fiona Coral Orange’ – 29
‘Hestia Red’ – 29
‘Jacqueline Pink’ – 29
‘Marilyn White’ – 29
‘Ursula Lavender’ – 29
- Chrysanthemum x***
superbum (Shasta Daisy) –
29, 32, 41
- Cissus rhombifolia*** (Grape
Ivy) – 24
- Cleome***
‘Senorita Rosalita’ – 3, 32
‘Sparkler’ – 29
- Clerodendrum ugandense***
(Common Buckeye) – 32
- Clethra alnifolia*** (Sweet
Pepperbush) – 2, 41
- Cleyera japonica*** (Japanese
Cleyera) – 2, 3, 9, 17, 21,
23, 26, 30, 31, 32, 35,
42
- Cliftonia monophylla***
(Cliftonia, Black Titi) – 17,
19
- Codiaeum variegatum***
(Croton, Variegated
Croton) – 24
- Coffea arabica*** (Coffee) – 24,
33
- Coleus x hybridus*** (Coleus) –
29, 24, 31, 35, 41

- Colocasia** (Elephant's Ear, Taro) – 3, 25, 41
 'Black Stem' – 3, 41
 'Little Black Magic' – 3, 35, 41
 'Little Black Stem' – 32, 41
 'Mojito' – 3
- Cordyline** – 3, 21, 24, 32
Cordyline australis – 3, 21, 24
 'Chocolate Queen' – 3
 'Jackie' – 3
 'Maria' – 3
 'Red Sensation' – 3, 32
 'Red Sister' – 3, 32
 'Ruby' – 3
- Coreopsis auriculata** (Dwarf Coreopsis) – 3, 21, 31, 32
 'Fruit Punch' – 3
- Coreopsis grandiflora** (Coreopsis) – 29, 32
 'Jethro Tull' – 3
- Coreopsis lanceolata** – 31
 'Moonbeam' – 3
 'Nana' – 3, 31, 32
 'Route 66' – 3
- Coriandrum sativum** (Foliage: Cilantro) – 29
- Coriandrum sativum** (Seed: Coriander) – 29, 41
- Coreopsos verticillata** – 3, 32
- Cornus angustata** (Chinese Evergreen Dogwood) – 17
- Cornus drummondii** (Rough-leaf Dogwood) – 3
- Cornus florida** (Flowering Dogwood) – 23, 26, 41
- Cornus foemina** – 41
- Cornus kousa** (Kousa Dogwood) – 31, 41
- Cortaderia selloana** (Pampas Grass) – 2, 3, 9, 17, 21, 26, 31, 32, 35, 41
- Costus speciosus** (Spiral or Crepe Ginger) – 31, 41
- Crataegus flava** (Mayhaw) – 35, 41
- Crataegus marshallii** (Parsley Hawthorn) – 17, 19
- Crataegus opaca** (Mayhaw) – 2, 17, 19, 31, 35, 41
- Crinum** species – 17, 19, 31, 32
 'Ellen Bosanquet' – 17, 31
 'Sangria' – 31
 'St. Christopher' – 17
- Crinum asiaticum** (Crinum) – 21, 31
- Crossandra infundibuliformis** (Firecracker Plant) – 29
- Cryptomeria japonica** (Cryptomeria, Japanese Cedar) – 3, 17, 18, 31, 35, 41
 'Yoshino' – 18, 41
- Ctnanthe** – 24
- Cucumis sativa** (Cucumber) 'Sweet Slice F1 Burpless' – 29
- Cupressus hyssopifolia** (Mexican Heather) – 2, 3, 9, 21, 24, 29, 31, 32, 35, 41
- Cupressocyparis leylandii** (Leyland Cypress) – 2, 3, 31, 32
- Cupressus arizonica** (Arizona Cypress) – 3, 31, 32, 35, 41
- Cupressus Leylandii** (Leyland Cypress) – 3, 31, 32, 41
- Cupressus sempervirens** (Italian Cypress) – 3, 31, 32, 35
- Curcuma** – 9, 21, 31, 32

Curcuma petiolata
(Pineapple Lily, Hidden
Ginger) – 31

Curcuma roscoeana (Pride of
Burma) – 21, 41

Curcubita pepo (Squash)
'Multipak Straightneck
Yellow' – 29

Cyathea cooperi (Australian
Tree Fern) – 21

Cycas revoluta (Sago Palm)
– 2, 3, 9, 21, 23, 24, 31,
32, 35, 41

Cyclamen persicum
(Cyclamen) – 24

Cydonia sinensis (Quince) –
17, 31, 32, 41

Cymbopogon citratus (Lemon
Grass) – 21, 29, 31, 41

Cyperus alternifolius
(Umbrella Plant, Cyperus) –
21, 31

Cyrilla arida (Arid Cyrilla) –
17

Cyrilla racemiflora (Titi,
Leatherwood) – 17, 19

Cyrtomium falcatum (Holly
Leaf Fern, Japanese Holly
Fern) – 2, 3, 9, 21, 24, 29,
31, 32, 41

- D -

Datura (Angel's Trumpet) –
21, 41

Delphinium chinensis
'Diamonds Blue' – 29

Dendrocalamus sp.
(Bamboo) – 33, 41

Dendrocalamus brandisii
(Bamboo) – 41

Dendrocalamus giganteus
(Bamboo) – 41

Dendrocalamus minor
(Bamboo)

'Ameomus' – 41

Deutzia gracilis (Slender
Deutzia) – 31, 41

Deutzia scabra (Fuzzy
Deutzia) – 41

Dianella sp. (Flax Lily) – 2, 3,
9, 21, 31, 32, 35

Dianella tasmanica
(Tazmanian Flax Lily) – 31

Dianella variegated – 3, 4, 9,
31, 32, 35

Dianthus
'Dash Pink' – 29, 41
'Dash Violet' – 29, 41
'Dash White' – 29, 41

Dianthus x
'Amazon Neon Cherry' –
29, 41
'Amazon Neon Purple' –
29, 41
'Amazon Rose Magic' –
29, 41

Dianthus x 'Dulce White to
Pink' – 29, 41

Dianthus x
'Parfait Crimson Venti' with
eye – 29, 41
'Parfait Super Raspberry' –
29, 41
'Telstar Crimson' – 29, 41
'Telstar Mix' – 29, 41
'Telstar Picotee' – 29, 41
'Telstar Purple' – 29, 41

Dianthus gratianopolitanus
– 3, 29, 32, 41

Dieffenbachia (Dieffenbachia,
Dumb Cane) – 24

Dietes bicolor (Butterfly Iris) –
3, 9, 21, 31, 32, 35, 41

Dietes iridoides (Butterfly Iris)
– 31, 35

Dietes vegeta (Butterfly Iris) –
3, 9, 21, 32, 35

Digitalis (Foxglove) – 3, 29,
32, 41

'Camelot Cream' – 29
 'Camelot Mix' – 29
 'Camelot Roxe' – 29
 'Camelot White' – 29
 'Dalmation Purple' – 29
Diospyros virginiana
 (Common Persimmon) – 3,
 17, 19, 26, 31, 35, 41,
 42, 43
Diospyros kaki (Japanese
 Persimmon) – 31
 'Fuyu' – 31
 'Jiro' – 31
Dipladenia splendens – 21
Dipsacus laciniatus (Fuller's
 Teasel) – 29
Dizygotheca elegantissima
 (False Aralia) – 24
Dracaena surculosa (Gold
 Dust Dracaena) – 24
Dracaena deremensis
 (Striped Dracaena) – 24, 41
Dracaena marginata (Red-
 edged Dracaena) – 24, 41
Dryopteris atrata (Shaggy
 Shield Fern) – 32, 41
Dryopteris australis (Dixie
 Wood Fern) – 3, 21, 32
Dryopteris erythrosora
 (Autumn Fern) – 3, 9, 21,
 24, 31, 32, 41
Dryopteris ludoviciana
 (Southern Wood Fern) – 9,
 19, 32, 41
Dryopteris normalis
 (Southern Wood Fern) – 21
Duranta repens (Brazilian
 Sky Flower) – 17, 21, 24,
 32
Dyopsis lutescens (Areca
 Palm, Golden Cane Palm)
 – 24

- E -

Echinacea purpurea (Purple
 Coneflower) – 3, 21,
 29, 32, 41
 'Hot Papaya' – 3
 'Magnus' – 3
 'Marmalade' – 3
Edgeworthia chrysantha
 (Paper Bush) – 17
Elaeagnus x ebbengei
 (Elaeagnus) – 3, 31, 32, 35
Elaeagnus pungens
 (Elaeagnus, Russian Olive)
 – 7, 9, 26
Elaeocarpus decipiens
 (Japanese Blueberry Tree)
 – 3, 32, 35, 41, 42
Eleocharis dulcis (Chinese
 Water Chestnut) – 41
Ensete ventricosum
 (Abyssinian Banana) – 21,
 32
Epipremnum aureum
 (Pothos, Golden Pothos) –
 24, 29
Equisetum hyemale
 (Horsetail) – 21, 32, 41
Eragrostis spectabilis
 (Purple Love Grass) – 19
Eriobotrya japonica
 (Japanese Plum, Loquat) –
 3, 21, 32, 35, 41, 42
Erysimum 'Citrona Yellow' –
 29
Erisimum x
 'Sugar Rush Mix' – 29
 'Sugar Rush Purple Bicolor'
 – 29, 41
 'Sugar Rush Yellow' – 29
Eruca vesicaria var. sativa
 (Lettuce) 'Arugula' – 29
Eubotrys racemosa 'Sandy
 Hollow' – 41
Eucalyptus cinerea
 (Eucalyptus) – 21, 41

Eucomis comosa 'Sparkling Burgundy' – 17

Euonymus americanus (Strawberry Bush, Wahoo) – 17, 19

Euonymus kiautschovicus (Spreading Euonymus) – 3

Eupatorium (Joe-Pye Weed) – 17, 41

Eupatorium coelestinum (Ageratum) – 29

Euphorbia (Poinsettia) 'Breathless White' – 3, 41

Euphorbia pulcherrima (Poinsettia) – 24

Euphorbia tirucalli – 24, 41

Evolvulus glomeratus (Blue Daze) – 3, 9, 29, 32
'Blue Daze'

Exacum affine (Persian Violet) – 24

- F -

Fagus grandifolia (American Beech) – 19

Farfugium japonicum (Giant Ligularia) 'Gigantae' – 17, 21

Fatsia japonica (Fatsia) – 3, 21, 31, 32, 35

Feijoa sellowiana (Pineapple Guava, Guava) – 3, 21, 31, 32, 41

Ficus benjamina (Weeping Fig) – 24, 41

Ficus carica (Common Fig) – 26, 32, 35, 41, 42

Ficus decora (Rubber Plant) – 24

Ficus pumila (Fig Vine, Creeping Fig) – 3, 32, 41

Ficus lyrata (Fiddle-Leaf Fig) – 24

Ficus repens (Fig Vine,

Creeping Fig) – 3, 21, 32, 41

Firmiana simplex (Chinese Parasol Tree) – 21

Foeniculum vulgare (Fennel) – 29

Foresteria acuminata – 19

Forsythia x (Forsythia) – 17, 35

Forsythia x lynwood (Forsythia) – 31

Fothergilla gardenii (Witch Alder) – 3, 41

Fothergilla major (Witch Alder) – 3, 17, 31
'Mount Airy' – 3, 17, 31

Franklinia axillaris (Franklinia) – 17, 41

Fraxinus pennsylvanica (Green Ash) – 2, 3, 21, 35

Fujisanensis – 3

Fuschia 'Dainty Angel Erring' – 29

- G -

Gaillardia aristata (Gaillardia, Blanketflower)

'Arizona Sun' – 3

'Fanfare' – 3

'Mesa Yellow' – 3, 29

'Oranges and Lemons' – 3

Gaillardia x grandiflora – 32

Gardenia augusta variegata (Variegated Dwarf Gardenia) – 42

Gardenia jasminoides (Cape Jasmine) – 2, 3, 4, 9, 17, 21, 23, 26, 31, 32, 35, 41, 42

'August Beauty' – 9, 35, 42

'Daisy' – 35

'Daruma' – 17

'Frost Proof' – 35, 41, 42, 43

'Four Seasons' – 17, 41
 'Heaven Scent' – 32
 'Jubilation' – 3, 32
 'Kleims Hardy' – 32
 'Mystery' – 9, 41, 42, 43
Gardenia radicans (Dwarf
 Gardenia) – 9, 35, 42
Gaura 'Corrie's Gold' – 3
Gaura lindheimeri (White
 Gaura) – 3, 32, 35
 'Siskiyou Pink' – 3, 32
 'Whirling Butterflies' – 3
Gelsemium rankinii (Swamp
 Jessamine) – 32, 41
Gelsemium sempervirens
 (Caroline Yellow
 Jessamine) – 3, 21, 31, 32,
 42
Gerbera jamesonii (Gerbera
 Daisy, African Daisy) – 3,
 24, 29
Gigantochloa sp. (Bamboo) –
 34
Ginkgo biloba (Ginkgo,
 Maidenhair Tree) – 3, 19,
 21, 31, 41
Gladiolus montbretia – 21
Gleditsia triacanthos (Honey
 Locust) – 2, 41
Globba winitti (Dancing
 Ladies) – 21, 31
Gordonia axillaris – 17
Gordonia lasianthis (Loblolly
 Bay) – 17

- H -

Halesia diptera (Silverbell,
 Two-wing Silverbell) – 19
Hamamelis virginiana (Witch
 Hazel) – 41
Hamelia – 3
Hamelia patens (Firebush) –
 32
Hedera helix (English Ivy) – 7,
 9, 21, 24

Hedychium coronarium
 (Butterfly Lily, Common
 Ginger Lily) – 3, 9, 21, 31,
 41
Hedychium flavum (Yellow
 Butterfly Ginger) – 21, 35,
 41
Hedychium gardeneranum
 (Kahili Ginger) – 21, 41
Hedychium greenii (Red
 Butterfly Ginger) – 21, 41
Helianthus angustifolia
 (Sunflower) – 17, 19
Heliconia angusta
 'Red Christmas' – 9
Hemerocallis fulva (Daylily) –
 2, 17, 21, 31, 32, 35, 41,
 42
Hesperaloe parvifolia (Red
 Yucca) – 17, 32
Heuchera micrantha – 3, 32
 'Blackout' – 3
 'Palace Purple' – 3
 'Plum Pudding' – 3
 'Tiramisu' – 3
Hibanobambusa sp.
 (Bamboo) – 33, 41
Hibanobambusa
tranquillans (Bamboo)
 'Shiroshima' – 41
Hibiscus coccineus (Native
 Red Hibiscus, Texas Star)
 – 3, 17, 19, 41, 42
 'Alba' – 17, 42
Hibiscus laevis (Halberdleaf
 Rosemallow) – 19
Hibiscus lasiocarpus
 (Woolly Rose-mallow) – 17,
 41
Hibiscus moscheutos
 (Swamp Mallow) – 3, 17,
 19, 31, 41
 'Lord Baltimore' – 3, 41
Hibiscus moscheutos x
 'Luna' – 29

- 'Luna Red' – 29, 31
 'Luna White' – 3, 29
- Hibiscus mutabilis***
 (Confederate Rose) – 3, 9,
 31, 41, 42
 'Painted Lady' – 3, 32
 'Seminole' Pink – 3, 21, 32
- Hibiscus rosa-sinensis***
 (Chinese Hibiscus) – 31, 32
 'Tropic Wind' series – 29
- Hibiscus syriacus*** (Althea,
 Rose of Sharon) – 3, 17,
 31, 41
 'Aphrodite' – 17
 'Brilliant Red' – 3, 21
 'Diana' – 17
 'Minerva' – 17
- Hibiscus x paramutabilis***
 'Terri's Pink' – 17, 41
- Hibiscus x sp***
 'Peppermint Flare' – 41
- Hippeastrum sp.*** (Amaryllis) –
 31, 41
- Homalomena*** – 24
- Hosta*** species (Hosta,
 Plantain Lily) – 3, 17, 21,
 31, 32, 35, 41
 'Blue Angel' – 32
 'Diamond Tiara' – 3
 'Francee' – 3, 31, 32, 43
 'Ginko Craig' – 17
 'Guacamole' – 17, 31, 32
 'Halcyon' – 3, 17, 32
 'Patriot' – 3, 32
 'Paul's Glory' – 3
 'So Sweet' – 3, 17, 31
 'Stained Glass' – 3, 31, 32
 'Sum & Substance' – 31,
 32, 43
- Hoya carnosa*** (Wax Plant) –
 24
- Hydrangea macrophylla***
 (Common Hydrangea) – 2,
 3, 9, 17, 31, 32, 35, 41
 'Big Daddy' – 3, 32
 'Bloomstruck' – 32
 'Blushing Bride' – 32
 'Bombshell' – 3, 32
 'Endless Summer' – 32, 41
 'Expression' – 3
 'Incrediball' – 3
 'Invincibelle Spirit' – 3
 'Nikko' – 31
 'Pink Beauty' – 31
 'Sister Theresa' – 31
 'Twist and Shout' – 32
- Hydrangea paniculata***
 (Peegee Hydrangea) – 3,
 17, 32, 41
 'Chantilly Lace' – 35
 'Limelight' – 17, 31, 32, 41
 'Little Lime' – 31, 32, 41
 'Mini Penny' – 3, 32
 'Pee Wee' – 3
 'Phantom' – 17
 'Pinky Winky' – 3, 32
 'Vanilla Strawberry' – 32,
 41
- Hydrangea quercifolia***
 (Oakleaf Hydrangea) – 3,
 17, 19, 31, 41
- Hydrangea serrata***
 (Hydrangea) – 24, 35, 41
- Hymenocallis*** (Spider Lily,
 Swamp Lily) – 19, 21, 31,
 41
- Hypericum gladioides*** (St.
 John's-wort) – 31
- Hypoestes phyllostachya***
 (Polka-dot Plant) – 24, 29,
 41
- | -
- Ilex aquifolium*** (English
 Holly) – 3
- Ilex cassine*** (Cassine Holly,
 Dahoon Holly) – 17, 19,
 36
 'Perdido' – 19
 'St. Tammany' – 17

- Ilex cornuta*** (Chinese Holly) –
 2, 3, 17, 18, 21, 23, 26,
 31, 32, 35, 41
 ‘Burfordii’ – 2, 3, 18, 21, 26,
 41
 ‘Burfordii Nana’ – 2, 3, 31,
 32, 36, 41
 ‘Carissa’ – 3, 31, 32, 35
 ‘Needlepoint’ – 2, 3, 9,
 17, 18, 23, 31, 32, 35,
 40, 41
 ‘Rotunda’ – 31
- Ilex cornuta* x** – 2, 3, 18, 31,
 36
 ‘Emily Bruner’ – 3, 17, 18,
 32
 ‘Mary Nell’ – 2, 17, 18
 ‘Nellie R. Stevens’ – 2, 3,
 17, 18, 31, 32, 35, 36,
 41
- Red Holly Group
 ‘Liberty’ – 3, 32
 ‘Oakland’ – 3, 32
 ‘Oakleaf’ – 3, 18, 23, 31,
 32, 35
 ‘Robin’ – 3, 31, 32
- Ilex crenata*** (Japanese Holly)
 – 2, 3, 17, 21, 23, 26,
 30, 31, 32, 35, 41, 43
 ‘Compacta’ – 2, 3, 21, 26,
 31, 32, 35, 41, 42, 43
 ‘Green Luster’ – 3
 ‘Helleri’ – 2, 3, 30, 31, 41
 ‘Sky Pencil’ – 2, 3, 17, 23,
 31, 32, 35, 41, 42,
 43
 ‘Soft Touch’ – 3, 17, 31, 32,
 35
 ‘Steeds’ – 32
- Ilex decidua*** (Deciduous
 Holly, Possum Haw) – 17,
 19
 ‘Warren’s Red’ – 19
- Ilex glabra*** (Inkberry,
 Gallberry)
 ‘Shamrock’ – 19
 ‘Nigra’ – 17, 32, 41
- Ilex opaca*** (American Holly) –
 17, 18, 19, 23
- Ilex verticillata*** (Winterberry)
 – 17, 19
 ‘Winter Red’ – 17, 19
 ‘Sunset’ – 19
- Ilex vomitoria*** (Native
 Yaupon) – 2, 3, 4, 17, 18,
 19, 21, 26, 30, 32, 35,
 41, 43
 ‘Anna’s Choice’ – 19
 ‘Hoskins Shadow’ – 17, 18,
 19, 21, 32
 ‘Pride of Houston’ – 19
- Ilex vomitoria*** ‘Nana’ (Dwarf
 Yaupon) – 2, 3, 17, 21, 26,
 30, 32, 35, 42, 43
 ‘Oscar’s Dwarf’ – 19
 ‘Schillings’ – 17, 21, 32,
 43
- Ilex vomitoria pendula***
 (Weeping Yaupon) – 3,
 17, 32, 35, 41
- Ilex x attenuata*** (Holly) – 2, 3,
 18, 19, 23, 31, 32, 36, 41
 ‘East Palatka’ – 18, 32
 ‘Eagleson’ – 17, 18, 19, 23,
 32, 35, 36
 ‘Fosteri’ – 18, 32
 ‘Savannah’ – 2, 3, 18, 21,
 23, 30, 31, 32, 35,
 36
- Ilex x meserveae*** (Holly) – 32
- Illicium anisatum*** (Japanese
 Anise Tree) – 17, 41
- Illicium floridanum*** (Star
 Bush, Florida Anise) – 3,
 17, 19, 21, 31, 35, 41
- Illicium parviflorum*** (Anise
 Tree) – 3, 17, 32, 35
 ‘Florida Sunshine’ – 17
- Impatiens wallerana***
 (Impatiens) – 29, 41

'New Guinea' – 29, 41
 'SunPatiens' – 29, 41
Indigofera cylindrical
 (Indigo) – 21
Indigofera kirilowii (Indigo) –
 3, 31, 32, 35
Indocalamus sp. (Bamboo) –
 33, 41
Indocalamus latifolius
 (Bamboo) – 41
Indocalamus tessellatus
 (Bamboo) – 41
Ipomea batatas (Sweet
 Potato Vine) – 3, 29, 32, 41
Iris ensata (Kaempferi,
 Japanese Iris) – 17, 32
Iris giganticaerulea (Giant
 Blue Flag Iris) – 19
Iris Louisiana hybrid – 2, 3,
 17, 19, 21, 31, 32, 35,
 41
 'Delta Star' – 32
 'Jeri' – 32
 'Marie Dolores' – 32
 'Sinfonietta' – 32
Iris moraea – 2, 3, 9, 21, 32
Iris pseudacorus – (Yellow
 Flag Iris) 3, 19, 21, 23, 31,
 32, 35, 41, 43
Iris siberica (Siberian Iris) –
 3, 21, 32
Iris virginica – 19, 21, 41
Iris x fulva – 19, 23, 41
Iris x nelsonii (Abbeville Iris)
 – 19
Itea virginica (Virginia Willow,
 Sweetspire) – 3, 17, 19,
 32
 'Henry's Garnet' – 3, 17, 19
 'Little Henry' – 32
Ixora (*Ixora*)
 'Maui' – 21, 32
 'Maui Yellow' – 3, 32
 'Maui Red/Orange' – 3, 32

- J -

Jacobinia velutina
 (Jacobinia) – 21
Jasminum floridum (Florida
 Jasmine) – 3, 41
Jasminum mesnyi (Primrose
 Jasmine) – 3, 9, 35, 41
Jasminum nudiflorum
 (Pinwheel Jasmine) – 3, 32,
 41
Jasminum sambac (Grand
 Duke Jasmine) – 21, 41
Juglans nigra (Black Walnut)
 – 17, 41
Juncus effusus (Soft Rush) –
 19, 21
Juniperus chinensis (Blue
 Vase Juniper) – 3, 21, 35,
 41
 'Blue Point' – 31, 32, 35, 41
 'Parsoni' – 31, 32
Juniperus conferta (Shore
 Juniper) – 3, 21, 31, 35, 41
 'Blue Pacific' – 32, 35
Juniperus davurica – 3, 21,
 31, 32, 41
Juniperus excelsa (Spiny
 Greek Juniper) – 3, 41
Juniperus horizontalis
 (Creeping Juniper) – 3, 31,
 32, 35, 41
Juniperus procumbens
 (Japanese Garden Juniper)
 – 3, 31, 32, 41
Juniperus procumbens
 'Nana' – 32, 35
Juniperus Sabina (Savin
 Juniper) – 41
Juniperus scopulorum
 (Rocky Mountain Juniper) –
 32, 41
Juniperus squamata (Blue
 Carpet Juniper) – 31, 41
Juniperus virginiana

(Eastern Red Cedar) – 2,
17, 19, 30, 31, 41
'Grey Owl' – 32
'Manhattan Blue' – 41

Justicia brandegeana
(Shrimp Plant) – 3, 28, 29,
41

- K -

Kaempferia pulchra
(Peacock Ginger) – 3, 9, 21

Kalanchoe blossfeldiana
(Kalanchoe) – 24, 41

Kerria japonica (Kerria,
Japanese Rose) – 16, 31,
41

Koelreuteria bipinnata
(Golden Rain Tree) – 31

Kosteletzkya virginica (White
Seashore Mallow) – 19
'Immaculate' – 19

- L -

Lactuca sativa (Lettuce) – 29
'Buttercrunch' – 29
'Parris Island Romaine'
29
'Red Sails' – 29
'Salad Bowl' – 29

Lagerstroemia fauriei
(Crapemyrtle)
'Fantasy' – 41

Lagerstroemia indica
(Crapemyrtle) – 2, 3, 17,
18, 23, 26, 29, 31, 32,
35, 36, 41, 42, 43
'Bashan Party Pink' – 35,
42
'Burgundy Cotton' – 42
'Byers White' – 42
'Carolina Red' – 35, 42
'Catawba' – 31, 42
'Cherry Dazzle' – 3, 32
'Centennial' – 42

'Chickasaw' – 42
'Coral Magic' – 32
'Country Red' – 35, 42
'Delta Jazz' – 3, 32
'Dwarf Delta Jazz' – 3
'Dynamite' – 2, 3, 23, 31,
41, 42

'Hardy Lavender' – 42
'Houston' – 42
'Lafayette' – 42
'Mardi Gras' – 42
'Near East' – 21
'New Orleans' – 42
'Pink Blush' – 42
'Pink Ruffle' – 42
'Pink Velour' – 3, 21, 23,
31, 41, 42
'Pokomoke' – 42
'Purple Cow' – 32
'Purple Magic' – 32
'Red Rocket' – 42
'Red Rooster' – 32
'Regal Red' – 42
'Rhapsody in Pink' – 41, 42
'Royalty' – 42
'Tightwad Red' – 42
'Twilight' – 3, 13, 31, 35,
41, 42
'Victor' – 42
'White Chocolate' – 42

Lagerstroemia x fauriei
(Crapemyrtle) – 3, 31,
32, 35, 36, 41, 42
'Acoma' – 3, 17, 31,
35, 41, 42
'Arapaho' – 3, 31, 35,
41, 42
'Choctaw' – 17, 42
'Hopi' – 42
'Miami' – 3, 17, 31, 41, 42
'Muskogee' – 2, 3, 17, 18,
32, 35, 41, 42
'Natchez' – 2, 3, 17, 18, 21,
23, 26, 31, 32, 35, 36,
41, 42, 43

- 'Osage' – 17
 'Sarah's Favorite' – 3, 35, 41
 'Sioux' – 17, 31, 35, 42
 'Tonto' – 3, 17, 21, 31, 32, 35, 41, 42
 'Tuscarora' – 2, 3, 18, 21, 23, 31, 32, 35, 41, 42
 'Tuskegee' – 17, 21, 41
 'Yuma' – 42
 'Zuni' – 41, 42
- Lantana camara** (Lantana) – 3, 9, 17, 29, 31, 41, 42
 'Bandana Cherry' – 3, 29, 41
 'Bandana Light Yellow' – 29
 'Bandana Red' – 3, 29
 'Bandana Rose' – 29
 'Chapel Hill Yellow' – 31
 'Dallas Red' – 32, 42
 'Miss Huff' – 3, 17, 32
 'New Gold' – 3, 24, 31, 32, 35, 41, 42
 'Tangerine' – 31
- Lantana montevidensis** (Trailing Lantana) – 3, 21, 24, 29, 32, 35, 41, 42
 'Sonset' – 3
 'Trailing Lavender' – 32, 42
 'Trailing White' – 42
- Lavandula angustifolia** (Lavender) – 29
- Leitnera floridana** (Florida Corkwood) – 17
- Leonurus** (Motherwort) – 29
- Lespedeza bicolor** (Shrub Bush Clover) – 17
 'Little Volcano' – 17
- Leucanthemum x superbum** (Shasta Daisy) – 3, 29, 32
- Leucophyllum frutescens** (Texas Sage, Purple Sage) – 32
- Leucophyllum greado** – 32
- Leucothoe axillaris** (Dog-Hobble) – 17, 41
 'Jenkins' – 17
- Leucothoe populifolia** (Florida Leucothoe) – 17, 32, 41
- Leucothoe racemosa** (Sweetbells) – 41
- Liatris pycnostachya** (Prairie Blazing Star) – 19
- Ligularia tussilaginea** (Libularia, Kaempfer Gondenray, Leopard Plant) – 21
- Ligustrum amurense** (Privet) – 31, 35, 41
- Ligustrum japonicum** (Wax Leaf Ligustrum) – 2, 3, 4, 9, 17, 18, 21, 23, 26, 31, 32, 35, 36, 41, 42
- Ligustrum lucidum** (Tree Ligustrum, Glossy Privet) – 2, 3, 18, 21, 31
- Ligustrum recurvifolium** (Curly-Leaf Ligustrum) – 4, 23, 31, 32, 41, 42, 43
- Ligustrum sinense** (Chinese Privet, Common Privet) – 31, 32, 41
- Lilium formosanum** (Philippine Lily) – 17
- Lilium x** (Garden Lilies)
 'Royal Trinity' – 17
 'Triumphator' – 17
- Lindera benzoin** (Spicebush) – 17
- Liquidambar styraciflua** (American Sweetgum) – 2, 17, 21, 41
- Liriodendron tulipifera** (Tuliptree, Yellow Poplar) – 2, 3, 21, 31, 41
- Liriope gigantea** – 2, 9, 21, 23, 31, 32, 35, 41

Liriope muscari – (Liriope, Lily Turf) – 2, 3, 9, 21, 23, 26, 31, 32, 35, 41, 42
'Aztec' – 9
'Big Blue' – 42
'Super Blue' – 31, 32
'Variegata' – 31, 32

Liriope spicata (Creeping Lily Turf) – 21, 41

Livistona chinensis (Chinese Fan Palm) – 21, 23, 24, 33

Lobelia cardinalis (Cardinal Flower) – 17

Lobularia maritima (Sweet Alyssum)
'Easter Bonnet Mix' – 29
'Easter Bonnet Pink/Lavender' – 29
'Easter Bonnet White' – 29

Lonicera fragrantissima (Winter Honeysuckle) – 3, 17, 41

Lonicera sempervirens (Coral or Trumpet Honeysuckle) – 3, 21, 31, 41, 43

Loropetalum chinense (Loropetalum, Chinese Witch Hazel) – 3, 9, 18, 21, 23, 31, 32, 35, 41, 42, 43
'Burgundy' – 9, 35
'Carolina Midnight' – 31, 35, 42, 43
'Crimson Fire' – 32
'Emerald Snow' – 3, 32
'Ever Red' – 3, 9, 32
'Ever Red Sunset' – 3, 32
'Merlot Lace' – 32
'Plumleaf' – 35, 41
'Purple Diamond' – 3, 32
'Ruby' – 35
'Suzanne' – 31, 32, 41
'Virginia Midnight' – 35

'Zhuzhou fuschia' – 3, 18, 31, 32, 35, 41

Loropetalum chinense var. rubrum

'Little Rose Dawn' – 32
'Purple Pixie' – 3, 32

Lyonia lucida (Fetter Bush)
17, 19
'Round Lake' – 17

Lysimachia nummularia (Turkey Ivy, Moneywort, Creeping Jenny, Creeping Charlie) – 21, 24, 41

- M -

Magnolia ashei (Ashe Magnolia) – 17, 19

Magnolia fuscata (Banana Shrub) – 3, 17, 21, 26, 31, 32, 35, 41, 43

Magnolia grandiflora (Southern Magnolia) – 3, 17, 18, 19, 21, 23, 26, 32, 35, 36, 41

'Alta' – 3, 21, 35
'Brackens Brown Beauty' – 32, 41

'D.D. Blanchard' – 3, 18, 21, 23, 26, 32, 35, 36, 43

'Little Gem' – 18, 31, 32, 35, 36, 41, 43

'Samuel Somner' – 19

Magnolia kobus – 19, 41

Magnolia macrophylla (Bingleaf Magnolia) – 17, 31

Magnolia x hybrids

(Japanese Magnolia)
'Ann' – 17, 31, 35, 42
'Betty' – 17, 26, 41
'Jane' – 2, 3, 17, 26, 31, 32, 35, 41, 42
'Susan' – 17, 41

- Magnolia kobus* var. *loebneri*** 'Merrill' – 3
- Magnolia Skinneriana*** – 3, 21, 31, 35
- Magnolia stellata*** (Star Magnolia) – 3, 17, 31, 32, 35, 41, 42
- Magnolia virginiana*** (Sweetbay Magnolia) – 2, 3, 17, 21, 26, 31, 32, 35, 36, 41
- Magnolia virginiana* var. *australis*** (Evergreen Magnolia) – 3, 17, 19
- Magnolia x kewensis*** 'Wada's Memory' – 17
- Magnolia x kobus* var. *loebneri*** 'Merrill' – 3
- Magnolia x soulangiana*** (Oriental Magnolia, Saucer Magnolia) – 2, 3, 17, 23, 35, 41, 42, 43
- Mahonia bealei*** (Leatherleaf Mahonia, Oregon Grape Holly) – 3, 21, 31, 41
- Mahonia eurybracteata*** 'Soft Caress' – 3
- Mahonia fortunei*** (Chinese Mahonia) – 21, 32
- Mahonia x*** 'Charity' – 17
- Mahonia x media*** 'Charity' – 17
- Malus angustifolia*** (Southern Crab Apple) – 2, 3, 17, 21, 31, 35, 41, 43
- Malus pumila*** (Apple) – 26, 31, 41
- Malus* sp.** 'Callaway' – 3, 35
- Malvaviscus arboreus* var. *drummondii*** (Turk's Cap) 'Big Mamma' – 17, 42
- Mandevillia x amabilis*** (Allamanda) – 24
- Manettia cordifolia*** (Firecracker Vine) – 9, 21
- Manettia leuconeura*** – 24
- Marshallii trinervia*** (Barbara's Buttons) – 19
- Mazus reptans*** – 21
- Melampodium paludosum*** (Melampodium) – 29, 41
- Melissa officinalis*** (Citronella Lemon Balm) – 29, 41
- Mentha piperita*** (Peppermint) – 29
- Mentha piperita citrate*** (Orange Mint) – 29, 41
- Mentha rotundifolia*** – 29, 41
- Mentha spicata*** (Spearmint) – 29, 41
- 'Spanish' – 29, 41
- 'Swiss' – 29, 41
- 'The Best' – 29, 41
- Mentha suaveolens*** (Apple Mint) – 29, 41
- Mentha suaveolens variegata*** (Pineapple Mint) – 29, 41
- Mentha x gracilis Sole*** (Ginger Mint) – 29, 41
- Metasequoia glyptostroboides*** (Dawn Redwood) – 3, 17, 41
- Michelia figo*** (Banana Shrub, Magnolia Fuscata) – 3, 17, 21, 26, 31, 35, 41, 42, 43
- 'Foggy' – 31
- 'Inspiration' – 31
- Michelia x foggii*** 'Jack Foggii' – 31
- Michelia yunnanensis*** 'Inspiration' – 31
- Michrolepia strigosa*** (Lace Fern) – 21
- Millettia reticulata*** (Evergreen Wisteria) – 21, 41
- Miscanthus sinensis*** – (Japanese Silver Grass) 3, 21, 31, 32, 35, 41

Miscanthus sinensis
 ‘Gracillimus’ (Maiden
 Grass) – 3, 21, 31, 32, 41

Miscanthus sinensis
 ‘Variegatus’ (Variegated
 Japanese Silvergrass) – 3,
 21, 31, 35, 41

Miscanthus sinensis
 ‘Zebrinus’ (Zebra Grass) – 3,
 9, 21

Monarda didyma (Beebalm) –
 17
 ‘Jacob Cline’ – 17

Moraea (Weeping Mulberry) -
 41

Moraea bicolor (Butterfly Iris,
 African Iris) – 3, 9, 21, 31,
 32, 35, 41

Moraea iridioides (Butterfly
 Iris, African Iris) – 3, 9, 21,
 23, 31, 32, 35, 41

Morus alba ‘Issai’ (Dwarf
 Mulberry) – 42

Morus rubra (Red Mulberry) –
 3, 41

Muhlenbergia capillaris
 (Muhly Grass) – 3, 19, 21,
 31, 32, 35, 41
 ‘White Cloud’ – 19

Murraya koenigii (Curry) – 29

Musa (Banana) – 2, 3, 9, 21,
 31, 32, 33, 35, 41

Musa acuminata (Dwarf
 Cavendish Banana) – 2, 9,
 21, 33, 41

Musa cavendishii (Cavendish
 Banana) – 2, 9, 21, 33, 41

Musa maurelii – 21, 31, 32,
 41

Musa ornata (Rose Banana,
 Dwarf Banana) – 41

Musa paradisiaca (Common
 Banana, Plantain) – 21, 41

Musa zebrina (Blood Banana)
 ‘Rojo’ – 9

Myrica cerifera (Southern
 Wax Myrtle) – 2, 3, 18, 19,
 21, 23, 26, 32, 41, 42
 ‘Don’s Dwarf’ – 19, 32
 ‘Tom’s Dwarf’ – 19
 ‘Wolf Boy’ – 19

- N -

Nandina domestica
 (Nandina) – 2, 17, 21, 23,
 31, 41
 ‘Blush Pink’ – 3, 32
 ‘Compacta’ – 2, 3, 21,
 23, 32, 35
 ‘Firepower’ – 2, 3, 4, 21,
 31, 32, 35, 41
 ‘Flirt’ – 3, 32
 ‘Gulfstream’ – 3, 21, 31, 32,
 41
 ‘Harbor Belle’ – 3, 21
 ‘Harbour Dwarf’ – 3, 21
 ‘Obsession’ – 3, 32

Nassella tenuissima
 (Mexican Feathergrass) –
 35, 41

Nemesia ‘Poetry Blue’ – 29

Neomarica gracilis (Walking
 Iris) – 2, 9, 21, 23, 32, 35
 ‘Caerula’ – 9
 ‘Regina Blue’ – 9

Nephrolepis biserrata
 (Macho Fern) – 21, 32

Nephrolepis exaltata (Sword
 Fern) – 21, 31, 35, 41

Nephrolepis exaltata
 ‘*Bostoniensis*’ (Boston
 Fern) – 2, 24, 29

Nepta cataria (Catnip) – 29,
 41

Nerium oleander (Oleander)
 – 3, 21, 31, 32, 35, 41

Nicotiana glauca (Flowering
 Tobacco) – 29

Nyssa aquatica (Water
 Tupelo) – 17, 19, 35

Nyssa sylvatica (Black Gum)
– 17, 19

- O -

Ocimum basilicum (Basil) –
29, 41
'African Blue' – 29, 41
'Blue Spice' – 29, 41
'Red Rubin' – 29, 41
'Sweet Large Leaf Italian' –
29
'Thai Siam Queen' – 29
Odontonema strictum
(Firespike) – 21
Ophiopogon jaburan (Giant
Lirope) – 9, 21, 31, 32, 35,
41
Ophiopogon japonicas
(Mondo, Monkey Grass) –
2, 3, 4, 9, 21, 23, 31,
32, 35, 41, 41, 42
Ophiopogon japonicus
'Nana' (Dwarf Mondo
Grass) – 4, 9, 31, 35, 42
Ophiopogon planiscapus
(Black Mondo Grass) – 21
Origanum majorana (Sweet
marjoram) – 29, 41
Origanum vulgare (Italian,
Greek Oregano) – 29
Osmanthus americanus
(Devilwood) – 17, 19
Osmanthus fragrans (Sweet
Olive) – 2, 3, 9, 17, 18,
21, 23, 26, 31, 32, 35,
41, 42
Osmanthus x fortunei
(Fortunes Osmanthus,
Thorney Sweet Olive, Tea
Osmanthus, False Holly) –
21, 41
Osmunda cinnamomea
(Cinnamon Fern) – 3, 19,
17, 21

Osmunda regalis (Royal
Fern) – 17, 19, 21
Osteospermum (Daisybush)
– 29, 32
Otatea sp. (Bamboo) – 33
Oxydendrum arboreum
(Sourwood) – 17, 19, 41

- P -

Panicum virgatum (Switch
Grass) – 19, 21
'Cloud Nine' – 19
'Dallas Blues' – 19
Parrotia persica (Parrotia) –
17
Passiflora pfordtii (Passion
Flower, Maypop) – 21
Passiflora coccinea (Red
Passion Flower) – 21
Pellaea rotundifolia (Button
Fern, Roundleaf Fern) – 24,
29
Pennisetum alopecuroides
(Fountain Grass) – 2, 3, 9,
21, 31, 32, 35, 41
'Moudry' – 21, 41
'Fireworks' – 3, 32
Pennisetum rubrum
(Fountain Grass) – 31, 32,
35, 41, 43
Pennisetum setaceum
(Fountain Grass) – 2, 3, 9,
21, 31, 32, 41
Pentas lanceolata (Pentas) –
3, 29
Peperomia caperata
(Peperomia) – 24, 29
Persea borbonia (Red Bay) –
17, 19, 41
Persea palustris (Swamp
Bay) – 17
Petroselinum crispum
(Parsley) – 29
Petunia x hybrida
'Black Velvet' – 29, 41

- 'Phantom' – 29, 41
 'Pinstripe' – 29, 41
 'Dreams Coral Morn' – 29, 41
 'Pretty Flora Midnight' – 29, 41
 'Pretty Flora Mix' – 29, 41
 'Pretty Flora Pink' – 29, 41
 'Pretty Flora Red' – 29, 41
 'Pretty Flora White' – 29, 41
 'Madness Yellow' – 29, 41
 'Shockwave Coconut' – 29, 41
 'Shockwave Denim' – 29, 41
 'Shockwave Pink Shades' – 29, 41
 'Shockwave Rose' – 29
- Philadelphus coronarius*** (Mock Orange) – 31, 41
Philadelphus x virginialis – 3, 31, 41
Philodendron erubescens (Philodendron)
 'Imperial Red' – 24
 'Red Emerald' – 24
 'Xanadu' – 9, 24, 31, 32, 41
- Philodendron selloum*** (Split Leaf Philodendron) – 2, 3, 9, 21, 23, 24, 31, 32, 35, 41
- Phlox divaricata*** (Blue Phlox) – 3, 17, 21, 32, 41
 'Emerald Blue' – 3, 41
 'La Blue' – 3, 41
- Phlox paniculata*** (Summer Phlox, Garden Phlox) – 17, 19, 32, 41
 'Robert Poore' – 19
 'Scarlet Flame' – 3, 41
- Phoenix canariensis*** (Canary Island Date Palm) – 21
- Photinia x fraseri*** (Photinia Fraseri, Fraser's Photinia) – 9, 21, 31, 32
- Phyllostachys sp.*** (Bamboo) – 21, 33, 41
- Phyllostachys angusta*** (Stone Bamboo) – 41
- Phyllostachys aurea*** (Golden Bamboo, Fishpole – 41 Bamboo) – 4, 21, 23, 33, 'Holo-chrysa' (Golden Golden) – 41
- Phyllostachys nigra*** (Black Bamboo) – 21
 'Henon' – 21
- Phyllostachys violascens*** (Bamboo) – 41
- Phyllostachys***
- Pieris japonica*** (Japanese Pieris) – 3, 17, 31, 32, 41
- Pieris ryukyuensis*** ('Temple Bells' Pieris) – 31, 42, 43
- Pinus echinata*** (Shortleaf Pine) – 41
- Pinus elliottii*** (Slash Pine) – 2, 21, 41
- Pinus glabra*** (Spruce Pine) – 2, 3, 17, 19, 21, 35
- Pinus palustris*** (Longleaf Pine) – 2, 17, 19, 21, 31, 41
- Pinus taeda*** (Loblolly Pine) – 2, 3, 17, 21, 31, 32, 35, 36, 41
- Pistacia chinensis*** (Pistachio, Chinese Pistache) – 17, 19, 35
- Pittosporum tobira*** (Pittosporum) – 3, 21, 31, 41
 'Dwarf Wheelers' – 3, 21, 32
 'Mojo' – 32
- Pittosporum tobira***
 'Variegata' (Japanese White Spot Pittosporum) – 31, 32, 41

- Platanus occidentalis***
(Sycamore) – 2, 3, 17,
23, 35, 36, 41
- Platycerium bifurcatum***
(Staghorn Fern) – 24, 41
- Platycodon grandiflora***
(Balloon Flower)
'Sentimental Blue' – 3
- Plectranthus amboinicus***
'Variegatus' (Variegated
Oregano) – 29
- Plectranthus australis***
(Swedish Ivy) – 24, 29, 41
- Plectranthus australis*** Green
– 29
- Plectranthus australis*** Red –
29
- Pleioblastus sp.*** (Bamboo) –
33
- Plumbago auriculata***
(Plumbago) – 3, 9, 21, 29,
32, 35, 41
- Podocarpus macrophyllus***
(Japanese Yew) – 2, 3, 4,
18, 21, 23, 26, 30, 31, 32,
35, 41
'Pringles' – 31, 32
'Yewtopia' – 32, 41
- Polystichum acrostichoides***
(Christmas Fern) – 17, 19,
21, 41
- Polystichum polyblepharum***
(Tassel Fern) – 3, 21
- Polystichum setosum***
(Japanese Lace Fern) – 21
- Pontederia cordata*** (Pickerel
Weed) – 19
- Portulaca grandiflora*** (Rose-
Moss, Portulaca) – 29, 41
- Portulaca oleracea***
(Purslane) – 24, 29, 41
- Prunus sp.*** – 3, 17, 26, 31,
32, 35, 41
- Prunus campanulata*** (Taiwan
Flowering Cherry) – 3,
17, 19, 32, 35
- Prunus caroliniana*** (Cherry-
Laurel) – 17, 21, 30, 32, 41
- Prunus cerasifera*** (Purpleleaf
Plum) – 3, 32, 41
- Prunus laurocerasus***
(English Laurel) – 30, 32
- Prunus mexicana*** (Mexican
Plum) – 19
- Prunus mume*** (Flowering
Apricot) – 17
- Prunus persica*** (Peach) – 3,
26, 31, 32, 41
- Prunus salicina*** (Plum) – 3,
31, 32, 35, 41
- Prunus serotina*** (Black
Cherry) – 19, 41
- Prunus serrulata*** (Japanese
Flowering Cherry) – 35
- Prunus x cistena*** – 26, 32, 41
- Prunus x yeodensis*** (Yoshino
Cherry) – 32, 35, 41
- Pseudocyonia sinensis***
(Chinese Quince) – 17, 41
- Ptelea trifoliata*** (Wafer Ash,
Hop Tree) – 17, 19
- Punica granatum***
(Pomegranate) – 3, 31, 32,
35, 41
- Punica granatum nana***
(Dwarf Pomegranate) – 3,
41
- Pyrostegia*** (Flame Vine) – 3
- Pyrus calleryana*** (Flowering
Pear) – 2, 3, 18, 26, 32, 35,
41
'Bradford' – 18, 41
'Cleveland' – 2, 3, 17, 18,
21, 26, 32, 35, 41
- Pyrus communis*** (Common
Pear) – 3, 18, 26, 31, 41

- Q -

- Quercus acutissima*** –
(Sawtooth Oak) – 2, 3,
23, 26, 31, 35, 41
- Quercus alba*** (White Oak) –
2, 17, 31, 35, 41
- Quercus bicolor*** (Swamp
White Oak) – 2, 3, 31, 35,
41
- Quercus falcata*** (Southern
Red Oak) – 23, 31, 41, 43
- Quercus falcata var.***
pagodifolia (Cherrybark
Oak, Swamp Red Oak) –
2, 19
- Quercus lyrata*** (Overcup
Oak) – 2, 19, 41
- Quercus michauxii*** (Cow
Oak) – 3, 17, 19, 31, 35, 41
- Quercus myrsinifolia*** – 23,
- Quercus nigra*** (Water Oak) –
2, 21, 23, 26, 41, 43
- Quercus nuttallii*** (Nuttall
Oak) – 2, 3, 17, 18, 19,
23, 31, 32, 35, 36, 41,
42, 43
- Quercus pagoda*** (Cherrybark
Oak) – 19
- Quercus palustris*** (Pin Oak)
– 3, 36, 41
- Quercus phellos*** (Willow
Oak) – 2, 3, 17, 18, 19,
23, 26, 31, 41, 43
- Quercus rubra*** (Northern Red
Oak) – 2, 18, 23, 32, 36, 41
- Quercus shumardii***
(Shumard Oak) – 2, 3,
17, 18, 26, 31, 32, 36,
42
- Quercus virginiana*** (Live
Oak) – 2, 3, 7, 17, 18,
19, 21, 23, 26, 31, 32,
35, 36, 41, 43
- Qiongzhuea sp.*** (Bamboo) –
33

- R -

- Radermachera sinica*** (China
Doll) – 24
- Raphiolepis indica*** (Indian
Hawthorn) – 2, 3, 9, 21, 23,
30, 31, 32, 35, 41
- ‘Eleanor Tabor’ – 3, 31, 32
- ‘Pink Snow’ – 9, 31, 35
- ‘Snow’ – 31, 35, 42
- ‘Snow Cap’ – 32
- ‘Spring Sonata’ – 32
- Ravenea rivularis*** (Majesty
Palm) – 24
- Rhapidophyllum hystrix***
(Needle Palm) – 21, 31
- Rhapis excelsa*** (Lady Palm)
– 21, 24, 33
- Rhododendron austrinum***
(Flame Azalea, Florida
Azalea) – 17, 19, 31, 41
- Rhododendron canescens***
(Native Azalea,
Honeysuckle Azalea) – 17,
19, 31, 41
- Rhododendron indica*** (Indian
Azalea, Southern Indica
Azalea) – 2, 3, 9, 17, 19,
24, 26, 31, 32, 35, 41,
42, 43
- ‘Cavendish’
- ‘Daphne Salmon’
- ‘Duchess Cypress’
- ‘Fielder’s White’
- ‘Fisher Pink’
- ‘Formosa’ – 17, 19, 31, 32,
35, 41, 42, 43
- ‘G.G. Gerbing’ – 17, 19, 31,
32, 35, 42, 43
- ‘George L. Taber’ – 17, 19,
31, 32, 35, 42, 43
- ‘Gulf Pride’
- ‘Iveryana’
- ‘Jennifer’ – 31
- ‘Judge Solomon’ – 31 35,
41, 43

'King's White'
 'Kissimee' – 42
 'Macrantha'
 'Mattapan'
 'Moss Point Orange'
 'Mrs. G.G. Gerbing' – 17,
 19, 31, 32, 35, 41, 42,
 43
 'Pink Formosa' – 42
 'President Clay' – 19, 43
 'Pride of Mobile' – 31, 35,
 41, 42
 'Red Formosa' – 31, 32, 35,
 41, 42, 43
 'Rosae' – 31, 41
 'Salmon Solomon'
 'Sekidera'
 'Southern Charm' – 19, 31,
 41

Rhododendron kurume

(Dwarf Azalea, Kurume
 Azalea) – 3, 17, 26, 31, 42
 'Amelia Rose' – 31, 41, 42
 'Christmas Cheer' – 31, 41
 'Coral Bell' – 31, 41
 'Edna B'
 'Pink Pearl' – 31, 41
 'Snow' – 3, 31, 41

Rhododendron, other azalea
 hybrid groups:

Aichele – 9
 'Easter Morn'
 'Laura'
Back Acre – 3, 17, 31, 41
 'Red Slipper' – 17, 31, 41
Carla – 3, 9, 17, 31, 41
 'Carror'
 'Pink Camilla' – 31, 41
 'Sunglow' – 31, 41
 'Wolfpack'
Encore
 'Autumn Amethyst' – 3, 32
 'Autumn Angel' – 3, 32
 'Autumn Belle' – 3
 'Autumn Bravo' – 3, 32

'Autumn Carnation' – 3, 32
 'Autumn Carnival' – 3
 'Autumn Cheer' – 3, 32
 'Autumn Chiffon' – 3, 32
 'Autumn Coral' – 3, 32
 'Autumn Embers' – 3, 32
 'Autumn Empress' – 3, 32
 'Autumn Ivory' – 32
 'Autumn Jewel' – 32
 'Autumn Lilac' – 3, 32
 'Autumn Lily' – 32
 'Autumn Moonlight' – 3, 32
 'Autumn Princess' – 3, 32
 'Autumn Rouge' – 3, 32
 'Autumn Royalty' – 3, 32
 'Autumn Ruby' – 3, 32
 'Autumn Sangria' – 3, 32
 'Autumn Starlite' – 3, 32
 'Autumn Sunburst' – 32
 'Autumn Sundance' – 3, 32
 'Autumn Sunset' – 3, 32
 'Autumn Sweetheart' – 3
 'Autumn Twist' – 3, 32
Gable
 'Corsage'
Glenn Dale – 2, 3, 4, 9, 17,
 31, 32, 35, 41, 43
 'Fashion' – 31, 32, 35, 42,
 43
 'Vesper'
Harris – 9
 'Coronado Red' – 17, 31,
 41, 42
 'Joan Garrett'
Kaempferi – 17
 'Johanna'
Linwood – 3, 9, 31
 'Hardy Gardenia' – 35, 42
Nuccio's – 3, 9
 'Wild Cherry'
Pennington – 17
 'R.W. Pennington'
Pericat – 9
 'Hampton Beauty' – 43

- Robin Hill – 3, 9, 17, 23,
 31, 32, 35, 42
 ‘Congo’ – 31, 42
 ‘Conversation Piece’ – 31,
 32, 35, 42, 43
 ‘Corry’
 ‘Dorothy Hayden’- 17, 31,
 41
 ‘Dorothy Rees’ – 9, 42
 ‘Greta’
 ‘Gwenda’
 ‘Hilda Niblett’ – 9
 ‘Nancy of Robin Hill’ – 9
 ‘Robin Dale’
 ‘Sir Robert’
 ‘Talbot’ – 9, 17, 27
 ‘Watchet’ – 31, 35, 41, 42
 ‘Wendy’ – 9
 ‘White Moon’
Rutherford – 2, 3, 4, 9, 26,
 31, 32, 35, 41, 42, 43
 ‘Mary Cochran’
 ‘Pink Ruffles’ – 9, 31, 32,
 35, 41, 42
 ‘Red Ruffles’ – 9, 31, 32,
 35, 41, 42
Satsuki – 3, 4, 9, 17, 26,
 31, 32, 35, 41, 42
 ‘Amaghasa’ – 31, 41
 ‘Arabesk’ – 9, 17, 31, 41
 ‘Balsaminae’
 ‘Chinzan’ – 31, 41
 ‘Eishi’ – 9
 ‘Gunrei’ – 9
 ‘Gyokushin’
 ‘Huang 3-5-72’
 ‘Huang 4-1-21’
 ‘Kazan’
 ‘Koromo Shikibu’ – 31, 41
 ‘Momo No Haru’
 ‘Polypetalum’ – 9
 ‘Wakaebisu’ – 9, 31, 41
Rhododendron, other azalea
 hybrids:
 ‘Aromi Sunrise’ – 31, 41
 ‘Astronaut’ – 31, 41
 ‘Belle of Dixie’
 ‘Canary Isles’ – 31, 41, 43
 ‘Clear Creek’ – 31, 41
 ‘Coral Cascade’ – 31,
 41
 ‘Country Cousin’ – 31, 41
 ‘Crimson Majesty’ – 3
 ‘Crimson Princess’ – 3
 ‘Crimson Queen’ – 3
 ‘Elsie Lee’
 ‘Four Kings’ – 31, 41
 ‘Gold Strike’ – 31, 41
 ‘H.H. Hume’ – 9
 ‘Hallie’ – 42
 ‘Hebert’
 ‘High Tide’ – 31
 ‘Holly Springs’ – 9
 ‘Irish Cream’ – 9, 17, 31,
 41, 42
 ‘Jacob Allen’ – 31, 41
 ‘Kissimmee’ – 42
 ‘Mardi Gras’ – 17, 41
 ‘Midnight Flare’ – 3, 31, 35,
 41
 ‘Poulkanese’ – 42
 ‘Red Lustre’ – 42, 43
 ‘Rosie’ – 17, 41
 ‘Spring Sensation’ – 31, 41
 ‘T-60-9’ – 17, 41
 ‘Touch of Pink’ – 31
 ‘Variegated Dogwood’ – 9,
 17, 31, 41
 ‘Vernwood’ – 17, 41
 ‘White Ruffle’ – 17, 41
 ‘Will of the Wisp’ – 17
 ‘Willow Run’ – 17
Rhododendron serrulatum
 (Swamp Azalea) – 19
Rhododendron sp.
Rhynchospora colorata
 (Starrush Whitetop) – 19
Rhus copallina (Shining
 Sumac, Flameleaf Sumac)
 – 17

Rhus copallinum – 19
Rhus glabra (Smooth Sumac)
 – 17
Roebelinii palm – 21, 24
Rohdea japonica (Sacred
 Lily) – 17
Rosa (Rose) – 3, 31, 32,
 35, 41
 ‘Cinco de Mayo’ – 3, 31,
 32, 41
 ‘Carefree Sunshine’ – 3
 ‘Drift Apricot’ – 32
 ‘Drift Coral’ – 29, 32
 ‘Drift Icy’ – 31
 ‘Drift Peach’ – 29, 32
 ‘Drift Pink’ – 29, 32
 ‘Drift Popcorn’ – 29, 32
 ‘Drift Red’ – 29, 32
 ‘Drift Sweet’ – 32
 ‘Julia Child’ – 3, 31, 32
 ‘Knockout’ – 3, 4, 21, 31,
 32, 35, 41
 ‘Knockout Pink’ – 31, 32,
 41
 ‘Knockout Double Pink’ – 3,
 32, 41
 ‘Knockout Double Red’ –
 31, 32, 41
 ‘Knockout Sunny PPAF’ –
 3, 31, 32
 ‘Thrive’ – 32
 ‘Whiteout’ – 32
Rosmarinus officinalis
 (Dwarf Rosemary) – 29, 32
 ‘Barbecue’ – 29
 ‘Prostrata’ – 3, 29, 32
 ‘Tuscan Blue’ – 29, 32
Rubus ursinus – 3, 41
Rudbeckia (Coneflower) – 3,
 19, 21, 29, 31, 32, 41
 ‘Cappuccino’ – 3
 ‘Early Bird Gold’ – 3
 ‘Goldilocks’ – 3
 ‘Goldstrum’ – 3, 21, 31, 32,
 41

‘Prairie Sun’ – 3
Rudbeckia fulgida
 ‘Goldstrum’ – 17
Rudbeckia fulgida sullivantii
 (Bracted Coneflower) – 3,
 29
Rudbeckia hirta (Black-eyed
 Susan) – 21, 29, 31, 32, 41
Ruellia brittoniana (Mexican
 Petunia) – 3, 7, 9, 17, 21,
 29, 32, 41, 43
 ‘Katie Purple’ – 3, 9, 17, 21,
 32
 ‘Purple Shower’ – 3
 ‘Southern Star Blue’ – 3
 ‘White’ – 32
Ruellia elegans
 ‘Ragin Cajun’ (SL) – 3
Rumohra adiantiformis
 (Leatherleaf Fern) – 29
Russelia sarmentosa – 9, 21

- S -

Sabal minor (Dwarf Palmetto)
 – 21, 19, 31, 41
Sabal palmetto (Cabbage
 Palm) – 21
Sagittaria lancifolia
 (Lanceleaved Arrowhead) –
 19
Saintpaulia ionantha (African
 Violet) – 24
Salix (Willow) – 2, 3, 17, 21,
 32, 41
Salix babylonica (Weeping
 Willow) – 2, 3, 21, 32,
 35, 41, 43
Salix caprea (Pussy Willow) –
 3, 41
Salix matsudana (Corkscrew
 Willow) – 3, 17
Salix nigra (Black Willow) –
 41
Salvia (Sage)
 ‘Black and Blue’ – 3, 32

- Salvia elegans** (Pineapple Sage) – 29
- Salvia greggii** (Cherry Sage, Autumn Sage) – 3, 32
Red – 3, 32
Coral – 32
- Salvia guaranitica** (Anise Sage) – 3
'Indigo Spires' – 32
- Salvia leucantha** (Mexican Bush Sage) – 3, 21, 32
- Salvia miniata** (Belize Sage)
'Mystic Spires' – 3, 29, 32
- Salvia officinalis** (Garden Sage) – 29
'Tricolor' – 29
- Sambucus Canadensis** (Elderberry) – 19
- Sansevieria trifasciata** (Sanseveria, Mother-in-law's Tongue) – 24
- Saponaria indicum** (Soapwort) – 29
- Sarcandra glabra** – 17
- Sarracenia** (Pitcher Plant) – 19
- Sasa sp.** (Bamboo) – 33
- Sasa palmata** (Palm Bamboo) – 21, 24, 33
- Sasa pygmaea** (Bamboo) – 21, 33
- Sasa veitchii** (Kuma-zasa) (Dwarf Bamboo) – 3, 21, 23, 31, 32, 33, 41
- Sasaella sp.** (Bamboo) – 33
- Satureja hortensis** (Savory) – 29
- Saururus cernuus** (Lizard's Tail) – 19
- Saxifraga stolonifera** (Strawberry Geranium) – 21
- Scaevola aemula** (Scaevola, Fan Flower) – 29
- Schizachyrium scoparium** (Little Bluestem Grass) – 19
- Scutellaria sp.** (Skullcap) – 29
- Sedum acre** (Sedum, Stonecrop) – 21, 41
'Lemon Ball' – 3, 32, 41
- Sedum spectabile** (Showy Stonecrop) – 3, 21, 41
- Selaginella** (Spikemoss) – 21
- Selaginella braunii** (Braun's Spikemoss, Arborvitae Fern) – 21
- Selaginella pallescens** (Arborvitae Fern) – 21
- Selaginella uncinata** (Peacock Fern) – 21
- Semiarundinaria sp.** (Bamboo) – 33
- Sempervivum** (Hen and Chickens) – 32, 41
- Senecio cineraria** (Dusty Miller) – 29, 41
'Silver Dust' – 29, 41
- Sesamum indicum** (Sesame) – 29, 41
- Setcreasea pallida** (Setcreasea, Purple Heart) – 31, 32
- Sinobambusa sp.** (Bamboo) – 33
- Solanum lycopersicum** (Tomato)
'Bella Rosa F1' – 29
'Big Beef F1' – 29
'Creole Improved' – 29
'Florida 91' – 29
'Phoenix' – 29
'Solar Fire F1' – 29
'Talledega' – 29
- Solidago rugosa** (Rough-stemmed Goldenrod)
'Fireworks' – 19, 41
- Spathiphyllum** (Spathiphyllum, Spathe)

Flower, Peace Lily) –
24

Spigelia marilandica (Indian Pink) – 17

Spiraea cantoniensis
(Reeve's Spirea, Bridal Wreath) – 3, 17, 21, 31, 32, 35, 41

Spiraea japonica (Red Japanese Spirea) – 3, 21, 32, 41

Spiraea nipponica – 32, 41

Spiraea prunifolia (Shoe Button Spirea) – 17, 41

Spiraea reevesiana (Reeve's Spirea, Bridal Wreath) – 3, 9, 17, 21, 31, 32, 35, 41

Spiraea thunbergii (Baby's Breath Spirea) – 17, 41
'Fujino Pink' – 17
'Ogon' – 17

Spiraea x bumalda – 3, 41

Spiraea x vanhouttei (Bridal Wreath Spirea, Vanhoutte Spirea) – 41

Stokesia laevis (Stoke's Aster) – 17, 19, 21, 31, 41

Strelitzianicolai – 21, 24

Strelitzia reginae (Bird-of-Paradise) – 21, 24, 32, 35

Stromanthe sanguinea
'Triostar' – 9, 32

Styrax americanus
(Snowbell) – 19

Syagrus romanzoffiana
(Queen Palm) – 21

Symphotrichum ellottii
(Elliott's Aster) – 19

Syngonium podophyllum
(Arrowhead Plant, Nephthytis) – 24, 29

Syringa patula (Korean Lilac, Manchurian Lilac) – 41

- T -

Tagetes erecta (Marigold, French Marigold) – 29

Tagetes patula – 29

Tanacetum parthenium
(Feverfew) – 29

Tanacetum vulgare (Tansy) – 29

Taxodium ascendens (Pond Cypress) – 17, 19, 31, 35, 36, 41

Taxodium distichum
(Common Bald Cypress) – 2, 3, 17, 18, 19, 21, 23, 26, 31, 32, 35, 36, 41, 42

Taxus (Yew) – 31, 41

Tectaria cicutaria – 24

Ternstroemia gymnanthera
(Cleyera, Japan Ternstoremia) – 3, 9, 17, 21, 26, 31, 32, 35, 41
'Big Foot' – 32
'Bronze Beauty' – 3, 32
'LeAnn' – 3, 32

Teucrium chamaedrys
(Germander) – 29

Thachycarpus fortunei – 3, 21, 23

Thelypteris kunthii (Wood Fern, Marsh Fern, Maiden Fern, Shield Fern) – 9, 19

Thuja occidentalis (American Arborvitae) – 3, 18, 28, 41

Thuja plicata (Giant Arborvitae) 'Green Giant' – 3, 18, 32, 41, 42

Thunbergia
'Blue Sky' – 3, 21

Thymus praecox Opiz
(Mother of Thyme) – 29, 41

Thymus species (Thyme) – 29, 41

Thymus x citriodorus – 29
'Orange Thyme' – 29, 41

Thymus x citriodorus

'Variegata' (Variegated
Lemon Thyme) – 29, 41

Thyrallis

'Gold Shower' – 3

Tibouchina urvilleana

(Princess-flower) – 21, 31,
32, 41

Torenia fournieri (Torenia,
Wishbone Flower) – 29

Trachelospermum asiaticum

(Asian Jasmine, Dwarf
Confederate Jasmine) – 2,
3, 9, 21, 31, 32, 35, 41

Trachelospermum

jasminoides (Star
Jasmine, Confederate
Jasmine) – 21, 31, 32, 35,
41, 42, 43

Trachelospermum

mandaiianum (Yellow Star
Jasmine) – 21

Trachycarpus fortunei

(Windmill Palm) – 3, 18, 21,
23, 31, 32, 35, 42

Tradescantia fluminensis

(Inch Plant, Wandering
Jew) – 24, 29

Tradescantia fluminensis

'variegata' – 29

Tradescantia spathacea

(Rhoeo) 'Tricolor' – 3, 21,
24

Tulbaghia violacea (Society

Garlic) – 3, 21, 32

- U -

Ulmus alata (Winged Elm) –
17, 19, 41

Ulmus parvifolia (Chinese

Elm, Lacebark Elm) – 2, 18,
21, 23, 31, 32, 35, 36,
41

'Allee' – 35

'Drake' – 18, 35, 36

- V -

Vaccinium sp. – 3, 17, 19, 31,
32, 35, 41

Vaccinium ashei (Blueberry)
– 3, 26, 31, 32, 35, 41,
42

Vaccinium darrowii

'John Blue' – 31, 41

'Rosa's Blush' – 19

Vaccinium elliottii – 17

Verbena canadensis

(Verbena) – 3, 24, 31, 32

Verbena officinalis (Vervain)
– 29

Verbena x hybrida

'Aztec Light Pink' – 3, 29,
32, 41

'Aztec Raspberry' – 3, 29,
32, 41

'Aztec Violet' – 3, 29

'Aztec White Pearl' – 3, 29,
41

'Homestead Purple' – 3, 21,
31, 32

'Princess Darl Lav.' – 3

'Tapien Lavender' – 32

'Tapien Pink' – 32

'Tapien Purple' – 32

Veronica peduncularis

(Veronica) – 32

Viburnum awabuki – 17, 41

Viburnum cinnamomifolium
– 41

Viburnum dentatum

(Arrowwood) – 17, 19, 41

Viburnum dentatum

scabrellum – 41

'Chemekete' – 41

'Lee's Landing' – 41

'Osceola' – 41

'Robert #4' – 41

Viburnum luscum – 17,
41

Viburnum macrocephalum

(Chinese Snowball)

- Viburnum) – 3, 17, 31, 32, 41, 43
- Viburnum nudum***
(Possumhaw Viburnum) – 17, 41
- Viburnum nudum cassinoides*** – 41
- Viburnum obovatum*** (Small or Little Leaf Viburnum) – 17, 19, 41
'Mrs. Schiller's Delight' – 17, 19
- Viburnum odoratissimum***
(Sweet Viburnum) – 3, 4, 21, 23, 31, 32, 35, 41, 42
- Viburnum plicatum***
(Doublefile Viburnum) – 3, 17, 41
- Viburnum rufidulum*** (Rusty Blackhaw Viburnum) – 17, 41
- Viburnum suspensum***
(Viburnum Suspensum) – 23, 32, 41
- Viburnum tinus*** (Laurustinus Viburnum) – 21, 23, 41
- Vinca major*** (Vinca, Periwinkle) – 21, 29, 41
- Vinca minor*** (Dwarf Vinca) – 21, 41
- Viola*** (Pansy) – 24, 29
- Viola x***
'Cool Wave Mix' – 29
'Cool Wave Mix Berries and Cream' – 29
'Cool Wave Mix Pastel' – 29
'Cool Wave Purple' – 29
'Cool Wave Violet Wing' – 29
'Cool Wave Yellow Golden' – 29
'Delta Tapestry Premium Mix' – 29
- 'Mammoth Blue Deep Dazzle' – 29
'Mammoth Mix' – 29
'Mammoth Pink Berry' – 29
'Mammoth Red Big' – 29
'Mammoth Sangria Punch' – 29
'Mammoth White Glamorama' – 29
'Mammoth Yellorina Prima' – 29
'Mammoth Yellow Queen Bee' – 29
'Mammoth White Hot' – 29
'Matrix Blue Blotch' – 29
'Matrix Blue Light' – 29
'Matrix Blue True' – 29
'Matrix Mix Blotch' – 29
'Matrix Mix Citrus' – 29
'Matrix Mix Clear' – 29
'Matrix Mix Ocean Breeze' – 29
'Matrix Mix Raspberry Sundae' – 29
'Matrix Morpheus' – 29
'Matrix Orange' – 29
'Matrix Primrose' – 29
'Matrix Purple' – 29
'Matrix Red Blotch' – 29
'Matrix White' – 29
'Matrix White Blotch' – 29
'Matrix Yellow' – 29
'Matrix Yellow Blotch' – 29
'Sorbet Shangri-la Marina' – 29
'Sorbet Coconut Duet' – 29
'Sorbet Delft Blue' – 29
'Sorbet Mix' – 29
'Sorbet Mix Blueberry Frost' – 29
'Sorbet Orange' – 29
'Sorbet Purple' – 29
'Sorbet White' – 29

'Sorbet Yellow' – 29
'Sorbet Yellow Jump Up' –
29
Vitex agnus-castus (Lilac,
Chaste Tree) – 3, 17, 21,
31, 32, 35, 42
Vitis sp. (Grape Vine) – 3, 41

Zenobia pulverulenta – 17,
19
'Woodlander's Blue' – 17
Zingiber zerumbet (Ginger) –
21, 30, 32, 41

- W -

Washingtonia robusta
(Mexican Fan Palm) – 21,
41
Weigela florida (Weigela) – 3,
17, 31, 41
Wisteria frutescens
(American Wisteria) – 17,
41
'Amethyst Falls' – 17, 32
Wisteria sinensis (Chinese
Wisteria) – 21, 31, 41

X – Y – Z -

Xanthosoma atrovirens
'albo-marginatum
Monstrosum' (Mickey
Mouse Taro) – 3, 31
X Gordlinia grandiflora
'Sweet Tea' – 17
Yucca filamentosa (Adam's
Needle, Spoonleaf Yucca)
– 21, 31, 33, 41
'Color Guard' – 3, 32
Yucca gloriosa (Spanish-
dagger) – 41
Yushiana sp. (Bamboo) – 33
Zamia pumila (Zamia,
Cardboard Sago) – 21
Zamioculcas zamifolia (ZZ) –
24
Zantedeschia – 21
Zantedeschia aethiopica
(Calla Lily) – 2, 21
Zanthoxylum americanum –
17

Common Names Index

Adam's Needle	<i>Yucca filamentosa</i>
African Violet	<i>Sainpaulia ionantha</i>
Agave, False Red	<i>Beschorneria septentrionalis</i>
Ageratum	<i>Eupatorium coelestinum</i>
Airplane Plant	<i>Chlorophytum comosum</i>
Allamananda	<i>Mandevilla x amabilis</i>
Almond, Flowering	<i>Prunus glandulosa</i>
Althea	<i>Hibiscus species</i>
Amaryllis	<i>Hippeastrum species</i>
American Beautyberry..	<i>Callicarpa americana</i>
Angel's Trumpet	<i>Brugmansia arborea</i> , also <i>Datura arborea</i>
Anise Hyssop	<i>Agastache foeniculum</i>
Anise Tree	<i>Illicium species</i>
Apple	<i>Malus species</i>
Apricot	<i>Prunus species</i>
Aralia, False	<i>Dizygotheca elegantissima</i>
Arborvitae, American ...	<i>Thuja species</i>
Ardisia, Japanese	<i>Ardisia japonica</i>
Arid Cyrilla	<i>Cyrilla arida</i>
Arrowhead Plant	<i>Syngonium podophyllum</i>
Arrowhead, Lanceleaved....	<i>Sagittaria lancifolia</i>
Ash, Green	<i>Fraxinus pennsylvanica</i>
Aster, Elliott's	<i>Symphotrichum elliotii</i>
Azalea	<i>Rhododendron species</i>
Bald Cypress.....	<i>Taxodium distichum</i>
Balloon Flower	<i>Platycodon grandiflora</i>
Bamboo	<i>Bambusa</i>
Bamboo	<i>Chimonobambusa</i>
Bamboo	<i>Arundinaria species</i>
Bamboo	<i>Dendrocalamus species</i>
Bamboo	<i>Gigantochloa species</i>
Bamboo	<i>Hibanobambuse species</i>
Bamboo	<i>Indocalamus species</i>
Bamboo	<i>Otatea species</i>
Bamboo	<i>Phyllostachys species</i>
Bamboo	<i>Pleioblastus species</i>
Bamboo	<i>Pseudosasa species</i>
Bamboo	<i>Qiongzhusa species</i>
Bamboo	<i>Semiarundinaria species</i>
Bamboo	<i>Shibabaea species</i>
Bamboo	<i>Sinobambusa species</i>
Bamboo	<i>Thyrosostachys species</i>
Bamboo	<i>Yushiana species</i>

Banana	<i>Musa species</i>
Banana Shrub	<i>Michelia figo</i>
Banana, Abyssinian	<i>Ensete ventricosum</i>
Barbara's Butons	<i>Marshallii trinervia</i>
Barberry	<i>Berberis</i>
Basil	<i>Ocimum basilicum</i>
Beebalm	<i>Monarda didyma</i>
Beech, American	<i>Fagus grandifolia</i>
Beet	<i>Beta vulgaris</i>
Big Bluestem	<i>Andropogon gerardii</i>
Bird-of-Paradise	<i>Strelitzia</i>
Black Gum	<i>Nyssa sylvatica</i>
Black Walnut	<i>Juglans nigra</i>
Blanketflower	<i>Gaillardia aristata</i>
Bleeding Heart Vine	<i>Clerodendrum thomsoniae</i>
Blood Flower	<i>Asclepias curassavica</i>
Blue Daze	<i>Evolvulus glomeratus</i>
Blueberry	<i>Vaccinium species</i>
Borage	<i>Borago officinalis</i>
Bottlebrush	<i>Callistemon species</i>
Bottlebrush Buckeye	<i>Aesculus species</i>
Bower Vine	<i>Pandorea jasminoides</i>
Boxwood	<i>Buxus species</i>
Brazilian Sky Flower	<i>Duranta repens</i>
Bridal Wreath	<i>Spirea species</i>
Broccoli	<i>Brassica oleracea</i>
Bromeliads	<i>Aechmea species</i>
Brussels Sprouts	<i>Brassica oleracea</i>
Buckeye, Common	<i>Clerodendrum ugandense</i>
Buckthorn, Carolina	<i>Rhamnus caroliniana</i>
Bugleweed	<i>Ajuga</i>
Burning Bush	<i>Euonymus alatus</i>
Bushy Bluestem	<i>Andropogon glomeratus</i>
Butterfly Bush	<i>Buddleia species</i>
Buttonbush	<i>Cephalanthus occidentalis</i>
Cabbage	<i>Brassica species</i>
Cally Lily	<i>Zantedeschia aethiopica</i>
Camellia, Tea	<i>Camellia species</i>
Candlestick Tree	<i>Cassia alata</i>
Cape Jasmine	<i>Gardenia jasminoides</i>
Caraway	<i>Carum carvi</i>
Cardboard Sago	<i>Zamia pumila</i>
Cardinal Flower	<i>Lobelia cardinalis</i>
Carolina Allspice	<i>Calycanthus floridus</i>
Cast Iron Plant	<i>Aspidistra elatior</i>

Catnip	<i>Nepta cataria</i>
Cauliflower	<i>Brassica species</i>
Cedar, Japanese	<i>Cryptomeria japonica</i>
Celery	<i>Apium graveolens</i>
Century Plant	<i>Agave americana</i>
Chaste Tree	<i>Vitex agnus-castus</i>
Chenille	<i>Acalypha pendula</i>
Cherry	<i>Prunus species</i>
Cherry, Indian	<i>Rhamnus caroliniana</i>
Chervil	<i>Ahthruscus cerefolium</i>
Chicory	<i>Chicorium</i>
China Doll	<i>Radermachera sinica</i>
Chinese Evergreen	<i>Aglaonema species</i>
Chinese Parasol Tree ..	<i>Firmiana simplex</i>
Chives	<i>Allium schoenoprasum</i>
Chokeberry	<i>Aronia arbutifolia</i>
Christmas Berry	<i>Ardisia crenata</i>
Cilantro	<i>Coriandrum sativum</i>
Citronella	<i>Melissa officinalis</i>
Cock's Comb	<i>Celosia argenta</i>
Collards	<i>Brassica oleracea</i>
Columbine	<i>Aquilegia</i>
Coneflower	<i>Rudbeckia</i>
Coneflower, Purple	<i>Echinacea purpurea</i>
Coral Bells	<i>Heuchera</i>
Coral Vine	<i>Antigonon leptopus</i>
Coriander	<i>Coriandrum sativum</i>
Corkwood, Florida	<i>Leitnera Floridaana</i>
Crab Apple	<i>Malus angustifolia</i>
Crapemyrtle	<i>Lagerstroemia species</i>
Creeping Jenny, Creeping Charlie	<i>Lysimachia nummularia</i>
Croton	<i>Codiaeum variegatum</i>
Cucumber	<i>Cucumis sativa</i>
Curry	<i>Murraya koenigii</i>
Cypress	<i>Cupressus species</i>
Cypress, Leyland	<i>Cupressocyparis leylandii</i>
Cypress, Pond / Bald ...	<i>Taxodium species</i>
Cypress Swamp Sedge	<i>Carex jorii</i>
Daisy, African	<i>Gerbera jamesonii</i>
Daisy, Gerbera	<i>Gerbera jamesonii</i>
Daisybush	<i>Osteospermum</i>
Dancing Ladies	<i>Globba winitti</i>
Daylily	<i>Hemerocallis fulva</i>
Devil's Walking Stick	<i>Aralia spinosa</i>
Devilwood	<i>Osmanthus americanus</i>

Dill	<i>Anethum graveolens</i>
Doghobble	<i>Eubotrys racemosa</i> ; also <i>Leucothoe racemosa</i>
Dogwood	<i>Cornus species</i>
Dusty Miller	<i>Senecio</i>
Elderberry	<i>Sambucus canadensis</i>
Elephant ear	<i>Alocasia macrorrhiza</i>
Elm	<i>Ulmus species</i>
English Ivy	<i>Hedera helix</i>
Epazote	<i>Chenopodium ambrosioides</i>
False Cypress, Hinoki ..	<i>Chamaecyparis obtusa</i>
Feather Reed Grass	<i>Calamagrostis x acutiflora</i>
Fennel	<i>Foeniculum vulgare</i>
Fern, Arborvitae	<i>Selaginella species</i>
Fern, Asparagus	<i>Asparagus densiflorus</i>
Fern, Australian Tree	<i>Cyathea cooperi</i>
Fern, Autumn	<i>Dryopteris erythrosora</i>
Fern, Bird's Nest	<i>Asplenium nidus</i>
Fern, Christmas	<i>Polystichum acrostichoides</i>
Fern, Cinnamon	<i>Osmunda cinnamomea</i>
Fern, Cinnamon	<i>Osmundastrum cinnamomeum</i>
Fern, Dixie Wood Fern	<i>Dryopteris australis</i>
Fern, Holly Leaf	<i>Cyrtomium falcatum</i>
Fern, Japanese Holly ..	<i>Cyrtomium fortunei</i>
Fern, Japanese Lace Fern	<i>Polystichum setosum</i>
Fern, Japanese Painted	<i>Athyrium species</i>
Fern, Lace	<i>Michrolepia strigosa</i>
Fern, Lady	<i>Athyrium species</i>
Fern, Leatherleaf	<i>Rumohra adiantiformis</i>
Fern, Macho / Sword / Boston	<i>Nephrolepis species</i>
Fern, Maidenhair	<i>Adiantum capillus-veneris</i>
Fern, Peacock	<i>Selaginella uncinata</i>
Fern, Roundleaf / Button	<i>Pellaea rotundifolia</i>
Fern, Royal	<i>Osmunda regalis</i>
Fern, Shaggy Shield	<i>Dryopteris atrata</i>
Fern, Southern Wood ...	<i>Dryopteris ludoviciana</i> ; <i>Dryopteris normalis</i>
Fern, Staghorn	<i>Platycterium bifurcatum</i>
Fern, Tassel	<i>Polystichum polyblepharum</i>
Fern, Tree	<i>Alsophila cooperi</i>
Fern, Wood / Marsh / Maiden / Shield	<i>Thelypteris kunthii</i>
Fetter Bush	<i>Lyonia lucida</i>
Feverfew	<i>Tanacetum parthenium</i>
Fig, Common	<i>Ficus carica</i>
Fig, Creeping or Vine ...	<i>Ficus repens</i>

Firebush	<i>Hamelia</i>
Firecracker Plant	<i>Crossandra infundibuliformis</i>
Firecracker Vine	<i>Manettia cordifolia</i>
Firespike	<i>Odontonema strictum</i>
Flame Vine	<i>Pyrostegia</i>
Flax Lily	<i>Dianella species</i>
Fountain Grass	<i>Pennisetum species</i>
Foxglove	<i>Digitalis</i>
French Mulberry	<i>Callicarpa americana</i>
Fringe Tree, Chinese ...	<i>Chionanthus retusus</i>
Garlic	<i>Allium sativum</i>
Garlic, Society	<i>Tulbaghia violacea</i>
Germander	<i>Teucrium chamaedrys</i>
Ginger	<i>Alpinia japonica</i>
Ginger	also <i>Asarum arifolium</i>
Ginger	<i>Hedychium species</i>
Ginger	<i>Zingiber zerumbet</i>
Ginger, Crepe	<i>Costus Speciosus</i>
Ginger, Hidden	<i>Curcuma petiolata</i>
Ginger, Peacock	<i>Kaempferia pulchra</i>
Ginger, Spiral	<i>Costus speciosus</i>
Glorybower	<i>Clerodendrum trichotomum</i>
Golden Rain Tree	<i>Koelreuteria bipinnata</i>
Goldenrod	<i>Solidago species</i>
Gordlinia	<i>xGordlinia</i>
Grape Ivy	<i>Cissus rhombifolia</i>
Grape Vine	<i>Vitis species</i>
Grass, Bluestem	<i>Schizachryium scoparium</i>
Grass, Mondo	<i>Ophiopogon species</i>
Grass, Muhly	<i>Muhlenbergia capillaris</i>
Grass, Silver / Maiden / Zebra	<i>Miscanthus sinensis species</i>
Guava	<i>Feijoa Sellowiana</i>
Hackberry	<i>Celtis laevigata</i>
Hawthorn	<i>Raphiolepis species</i>
Hen and Chickens	<i>Sempervivum</i>
Hickory	<i>Carya tomentosa</i>
Holly	<i>Ilex species</i>
Honey Locust	<i>Gleditsia triacanthos</i>
Honeysuckle	<i>Lonicera species</i>
Hop Tree	<i>Ptelea trifoliata</i>
Hornbeam	<i>Carpinus caroliniana</i>
Horsetail	<i>Equisetum hyemale</i>
Ice Plant, Hardy	<i>Delosperma cooperi</i>
Indian Pink	<i>Spigelia marilandica</i>
Indigo, Blue False	<i>Baptisia australis</i>

Indigo, White Wild	<i>Baptisia alba</i>
Iris, Abbeville	<i>Iris x nelsonii</i>
Iris, Butterfly	<i>Dietes species</i>
Iris, Butterfly / African ...	<i>Moraea species</i>
Iris, Walking	<i>Neomarica gracilis</i>
Ironwood	<i>Carpinus carolina</i>
Ivy, Swedish	<i>Plectranthus australis</i>
Jacktree	<i>Sinojackia rehderiana</i>
Japanese Blueberry Tree	<i>Elaeocarpus decipiens</i>
Japanese Plum	<i>Eriobotrya japonica</i>
Jasmine	<i>Jasminum species</i>
Jasmine, Asian / Confederate / Star	<i>Trachelospermum species</i>
Jessamine, Caroline Yellow	<i>Gelsemium sempervirens</i>
Jessamine, Swamp	<i>Gelsemium rankinii</i>
Joe-Pye Weed	<i>Eupatorium</i>
Juniper	<i>Juniperus species</i>
Kale	<i>Brassica species</i>
Laurel, English	<i>Prunus laurocerasus</i>
Lavender	<i>Lavendula augustifolia</i>
Leatherwood	<i>Cyrilla racemiflora</i>
Lemon Balm	<i>Melissa officinalis</i>
Lemon Grass	<i>Cymbopogon citrates</i>
Leopard Plant	<i>Ligularia tussilaginea</i>
Lettuce	<i>Lactuca sativa</i>
Lettuce, Arugula	<i>Eruca vesicaria var. sativa</i>
Leucothoe	<i>Agarista</i>
Ligularia	<i>Farfugium japonicum</i>
Lilac	<i>Vitex agnus-castus</i>
Lilac, Korean / Manchurian	<i>Syringa patula</i>
Lilies, Garden	<i>Lilium species</i>
Lily	<i>Crinum species</i>
Lily of the Nile	<i>Agapanthus africanus</i>
Lizard's Tail	<i>Saururus cernuus</i>
Loblolly Bay	<i>Gordonia lasianthis</i>
Loquat	<i>Eriobotrya japonica</i>
Love Grass, Purple	<i>Eragrostis spectabilis</i>
Maidenhair Tree	<i>Ginkgo biloba</i>
Mallow	<i>Hibiscus species</i>
Mandevilla	<i>Dipladenia splendens</i>
Maple	<i>Acer species</i>
Maple, Flowering	<i>Abutilon pictum</i>
Margiold	<i>Tagetes species</i>
Marjoram, Sweet	<i>Origanum majorana</i>
Mayhaw	<i>Crataegus opaca</i>
Maypop	<i>Passiflora pfordtii</i>

Mexican Feathergrass .	<i>Nassella tenuissima</i>
Mexican Heather	<i>Cuphea hyssopifolia</i>
Mickey Mouse Taro	<i>Xanthosoma atrovirens</i>
Milkweed	<i>Asclepias curassavica</i>
Million Bells	<i>Calibrochoa</i>
Mint	<i>Mentha species</i>
Mock Orange	<i>Philadelphus coronaries</i>
Moneywort	<i>Lysimachia nummularia</i>
Motherwort	<i>Leonurus</i>
Mulberry, Dwarf	<i>Morus alba</i>
Mulberry, Red	<i>Morus rubra</i>
Mulberry, Weeping	<i>Moraea</i>
Mustard	<i>Brassica juncea</i>
Myrtle, Southern Wax ..	<i>Myrica cerifera</i>
Nephthytis	<i>Syngonium podophyllum</i>
Oak	<i>Quercus species</i>
Oleander	<i>Nerium oleander</i>
Onions	<i>Allium cepa</i>
Orchid	<i>Phaius species</i>
Orchid, Bamboo	<i>Arundia graminifolia</i>
Orchid, Chinese Ground ...	<i>Bletilla species</i>
Oregano, Greek	<i>Salvia fruticosa</i>
Oregano, Italian	<i>Origanum vulgare</i>
Oregano, Variegated ...	<i>Plectranthus amboinicus</i>
Oxblood Lily	<i>Rhodophiala bifida</i>
Pak Choi / Bok Choy	<i>Brassica rapa</i>
Palm, Areca	<i>Dypsis lutescens</i>
Palm, Bamboo	<i>Chamaedorea microspadix</i> or <i>C. erumpens</i>
Palm, Cabbage	<i>Sabal palmetto</i>
Palm, Canary Island Date....	<i>Phoenix canariensis</i>
Palm, Chinese Fan	<i>Livistona chinensis</i>
Palm, Golden Cane	<i>Dypsis lutescens</i>
Palm, Jelly	<i>Butia capitata</i>
Palm, Lady	<i>Rhapis excelsa</i>
Palm, Majesty	<i>Ravenea rivularis</i>
Palm, Mediterranean Fan ...	<i>Chamaerops humilis</i>
Palm, Mexican Fan	<i>Washingtonia robusta</i>
Palm, Neanthe Bella	<i>Chamaedorea elegans</i>
Palm, Needle	<i>Rhapidophyllum hystrix</i>
Palm, Pindo	<i>Butia capitata</i>
Palm, Queen	<i>Syagrus romanzoffiana</i>
Palm, Queen	<i>Arecastrum romanzoffianum</i>
Palm, Sago	<i>Cycas revolute</i>
Palm, Windmill	<i>Trachycarpus fortunei</i>

Palmetto, Dwarf	<i>Sabal minor</i>
Pampas Grass	<i>Cortaderia selloana</i>
Pandora Vine	<i>Pandorea pandorana</i>
Pansy	<i>Viola species</i>
Paper Bush	<i>Edgeworthia chrysantha</i>
Parsley	<i>Petroselinum crispum</i>
Parsley Hawthorn	<i>Crataegus marshallii</i>
Passion Flower	<i>Passiflora pfordtii</i>
Pawpaw	<i>Asimina triloba</i>
Peace Lily	<i>Spathiphyllum</i>
Peach	<i>Prunus species</i>
Pear	<i>Pyrus species</i>
Pecan	<i>Carya illinoensis</i>
Pepper	<i>Capsicum annum</i>
Periwinkle	<i>Vinca species</i>
Persian Violet	<i>Exacum affine</i>
Persimmon, Common ...	<i>Diospyros virginiana</i>
Persimmon, Japanese ..	<i>Diospyros kaki</i>
Philippine Lily	<i>Lilium formosanum</i>
Pickrel Weed	<i>Pontederia cordata</i>
Pine	<i>Pinus species</i>
Pine, Norfolk Island	<i>Araucaria heterophylla</i>
Pineapple Lily	<i>Curcuma petiolata</i>
Pineapple Lily	<i>Eucomis comosa</i>
Pistachio	<i>Pistacia chinensis</i>
Pitcher Plant	<i>Sarracenia</i>
Plaintain Lily	<i>Hosta</i>
Plum	<i>Prunus species</i>
Plumbago	<i>Ceratostigma lumbaginoides</i>
Plum-Yew, Harrington ...	<i>Cephalotaxus harringtonia</i>
Poinsettia.....	<i>Euphorbia</i>
Polka-dot Plant.....	<i>Hypoestes phyllostachya</i>
Pomegranate	<i>Punica granatum</i>
Possum Haw	<i>Ilex decidua</i>
Prairie Blazing Star	<i>Liatris pycnostachya</i>
Pride of Burma	<i>Curcuma roscoeana</i>
Princess Flower	<i>Tibouchina species</i>
Privet	<i>Ligustrum species</i>
Purple Heart	<i>Setcreasea pallida</i>
Purslane	<i>Portulaca oleracea</i>
Quince	<i>Cydonia sinensis</i> <i>Pseudocydonia</i>
Quince, Flowering	<i>Chaenomeles speciosa</i>
Red Bay	<i>Persea borbonia</i>
Redbud	<i>Cercis reniformis</i> or <i>C. canadensis</i>
Red Tip or Red Top.....	<i>Photinia</i>

Redwood, Dawn	<i>Metasequoia glyptostroboides</i>
River Birch	<i>Betula nigra</i>
Rose	<i>Rosa species</i>
Rosemary	<i>Rosmarinus species</i>
Rose of Montana	<i>Antigonon leptopus</i>
Rose of Sharon	<i>Hibiscus species</i>
Rubber Plant	<i>Ficus decora</i>
Rush, Soft	<i>Juncus effusus</i>
Sacred Lily	<i>Rohdea japonica</i>
Sage	<i>Salvia officinalis</i> or <i>S. species</i>
Sage, Pineapple	<i>Salvia elegans</i>
Sage, Texas or Purple .	<i>Leucophyllum frutescens</i>
Sasanqua	<i>Camellia sasanqua</i>
Savory	<i>Satureja hortensis</i>
Schefflera	<i>Brassaia species</i>
Sea Oats, Inland	<i>Chasmanthium latifolium</i>
Seashore Mallow	<i>Kosteletskyia virginica</i>
Sedge, Cypress Swamp ...	<i>Carex jorii</i>
Sesame	<i>Sesamum indicum</i>
Shasta Daisy	<i>Chrysanthemum</i>
Shrimp Plant	<i>Justicia species</i>
Shrub Buch Clover.....	<i>Lespedeza bicolor</i>
Silverbell, Two-wing	<i>Halesia diptera</i>
Skullcap	<i>Scutellaria species</i>
Snapdragon	<i>Antirrhinum majus</i>
Snowbell	<i>Styrax species</i>
Soapwort	<i>Saponaria indicum</i>
Sourwood	<i>Oxydendrum arboretum</i>
Southern Lace.....	<i>Chamaecyparis obtuse</i>
Spicebush	<i>Lindera benzoin</i>
Spider Lily	<i>Hymenocallis</i>
Spider Plant	<i>Chlorophytum comosum</i>
Spikemoss	<i>Selaginella species</i>
Squash	<i>Curcubita pepo</i>
St. John's-wort	<i>Hypericum gladioides</i>
Starrush Whitetop	<i>Hynchospora colorata</i>
Stoke's Aster	<i>Stokesia</i>
Stonecrop	<i>Sedum spectabile</i>
Strawberry Bush	<i>Euonymus americanus</i>
Sumac	<i>Rhus species</i>
Sunflower	<i>Helianthus angustifolia</i>
Swamp Bay	<i>Persea Palustris</i>
Swamp Privet	<i>Foresteria acuminata</i>
Sweet Alyssum	<i>Lobularia maritime</i>
Sweet Olive	<i>Osmanthus fragrans</i>

Sweet Pepperbush	<i>Clethra alnifolia</i>
Sweet Potato Vine	<i>Ipomea batatas</i>
Sweet Shrub	<i>Calycanthus floridus</i>
Sweetgum, American ...	<i>Liquidambar styraciflua</i>
Sweetheart Tree	<i>Euscaphis japonica</i>
Sweetspire	<i>Itea virginica</i>
Switch Grass	<i>Panicum virgatum</i>
Swiss Chard	<i>Beta vulgaris</i>
Sycamore	<i>Platanus occidentalis</i>
Tansy	<i>Tanacetum vulgare</i>
Taro	<i>Colocasia</i>
Tarragon	<i>Artemesia dracunculus</i>
Teasel , Fuller's	<i>Dipsacus laciniatus</i>
Thryallis	<i>Galphimia gracillis</i>
Thyme	<i>Thymus species</i>
Titi	<i>Cyrilla racemiflora</i>
Tobacco, Flowering	<i>Nicotiana glauca</i>
Tomato	<i>Solanum lycopersicum</i>
Triostar Ginger	<i>Stromanthe sanguinea</i>
Tuliptree	<i>Liriodendron tulipifera</i>
Turk's Cap	<i>Malvaviscus species</i>
Umbrella Plant	<i>Cyperus alternifolius</i>
Vervain	<i>Verbena species</i>
Virginia Willow	<i>Itea virginica</i>
Wafer Ash	<i>Ptelea trifoliata</i>
Wahoo	<i>Euonymus americanus</i>
Wandering Jew	<i>Tradescantia species</i>
Water Chestnut, Chinese ...	<i>Eleocharis dulcis</i>
Water Hickory	<i>Carya aquatica</i>
Water Tupelo	<i>Nyssa aquatica</i>
Wax Plant	<i>Hoya Carnosa</i>
Weeping Fig	<i>Ficus benjamina</i>
White Wild Indigo	<i>Baptisia alba</i>
Willow	<i>Salix species</i>
Wishbone Flower	<i>Torenia fournieri</i>
Wisteria, Evergreen	<i>Millettia reticulata</i>
Witch Alder	<i>Fothergilla gardenia; Fothergilla major</i>
Witch Hazel	<i>Hamamelis virginiana</i>
Woodoats, Longleaf	<i>Chasmanthium sessiliflorum</i>
Yarrow	<i>Achillea millefolium</i>
Yellow Bells	<i>Tecoma stans</i>
Yellow Poplar	<i>Liriodendron tulipifera</i>
Yesterday, Today and Tomorrow	<i>Brunfelsia pauciflora</i>
Yew	<i>Taxus</i>
Yew, Japanese	<i>Podocarpus macrophyllus</i>

Yucca, Red *Hesperaloe parvifolia*
Zebra Plant *Aphelandra squarrosa*
Zebra Plant *Calathea picturata*
ZZ *Zamioculcas zamifolia*

ALLIED MEMBERS

GRACO FERTILIZER COMPANY

'When Quality and Service Count'
P.O. Box 89 Cairo, Georgia 39828

ROBERT (BOB) MILLER
Sales representative

Cell: (601) 325-7300
Office: (601) 268-6664
Fax: (601) 579-8015



email: vol1968@comcast.net
Toll Free: 1-800-343-5620



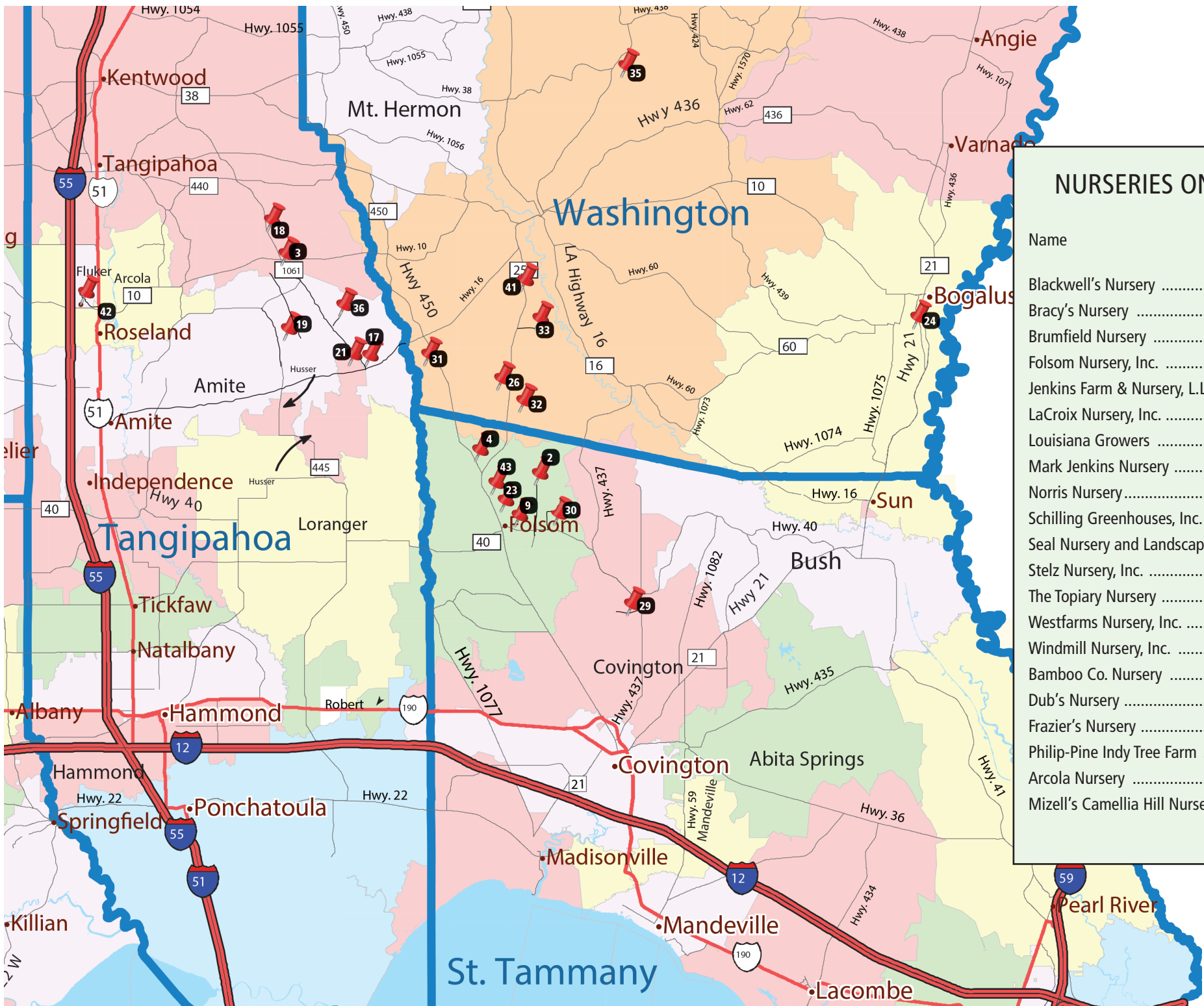
Irrigation Equipment

WAYNE ORTON

Cell: (985) 966-6776 email br9@keelingcompany.com

311 HOLIDAY BLVD, COVINGTON, LA 70433
(985) 898-2299 N.O. (504) 522-0346 FAX: (985) 898-3660

www.keelingcompany.com



NURSERIES ON MAP

Name	Map Number
Blackwell's Nursery	2
Bracy's Nursery	3
Brumfield Nursery	4
Folsom Nursery, Inc.	9
Jenkins Farm & Nursery, L.L.C.	17
LaCroix Nursery, Inc.	18
Louisiana Growers	19
Mark Jenkins Nursery	21
Norris Nursery	23
Schilling Greenhouses, Inc.	24
Seal Nursery and Landscaping, Inc.	26
Stelz Nursery, Inc.	29
The Topiary Nursery	30
Westfarms Nursery, Inc.	31
Windmill Nursery, Inc.	32
Bamboo Co. Nursery	33
Dub's Nursery	35
Frazier's Nursery	36
Philip-Pine Indy Tree Farm	41
Arcola Nursery	42
Mizell's Camellia Hill Nursery	43

Place
stamp
here.
