


COMPANY PORTFOLIO

www.dreamzspa.com

 [dreamz_international](https://www.instagram.com/dreamz_international)

34, Lakeside Rd, Vidya Nagar, T. Dasarahalli, Bengaluru, Karnataka 560057



SPA & WELLNESS CONSULTANCY

SPA & WELLNESS ARCHITECTURE - INTERIOR DESIGN

SPA & WELLNESS FUNCTIONAL DESIGN & ENGINEERING

SALON DESIGN AND ENGINEERING

PRODUCT DESIGN AND SUPPLY OF FFE & OSE

The image features a white background with two large, light blue geometric shapes in the corners. The shape in the top-left corner is a square with a smaller square cut out from its bottom-right corner. The shape in the bottom-right corner is a square with a smaller square cut out from its top-left corner. These shapes are positioned such that they appear to be part of a larger frame or design.

SPA & WELLNESS COSULTANCY

MARKET RESEARCH & FEASIBILITY



CONCEPT & BRAND DEVELOPMENT



DESIGN & TECHNICAL SERVICES



PRE-OPENING SERVICES & TRAINING



MANAGEMENT

Scope includes:

1. Site Inspection & Kick-off Meeting
2. Competitive Analysis
3. Market Analysis and Development Opportunities
4. Development Strategy
5. Architecture Programme Planning & Adjacency Diagram
6. Demand Analysis & Financial Forecast
7. Investment Analysis





Scope includes:

1. Overview of the Regional Spa and Wellness Market
2. Positioning Strategy and Target Market
3. Description of the Guest Journey
4. Unique Selling Points
5. Service Platform
6. Initial Look & Feel Recommendations
7. Initial Treatment Menu Recommendations
8. Architecture Programme Planning & Adjacency Diagram



MARKET RESEARCH & FEASIBILITY



CONCEPT & BRAND DEVELOPMENT



DESIGN & TECHNICAL SERVICES



PRE-OPENING SERVICES & TRAINING



MANAGEMENT

Scope includes:

1. Concept Presentation and Vision
2. Initial Space Planning and Key Relationships
3. Architecture and Interior Look and Feel
4. Consultant Team Recommendation
5. Review of Design Drawings from Concept Design to Construction Documentation
6. OS&E Planning and Specifications
7. Recommendation of MEP Specialist for Design of Thermal & Water Experiences
8. Site Administration & Inspection



MARKET RESEARCH & FEASIBILITY



CONCEPT & BRAND DEVELOPMENT



DESIGN & TECHNICAL SERVICES



PRE-OPENING SERVICES & TRAINING



MANAGEMENT

Scope includes:

1. Pre-opening Critical Path Planning
2. Pre-opening Sales & Marketing Plan
3. Executive Recruitment & Hiring Process
4. Equipment Vendor Specification
5. Standard Operating Procedures
6. Job Descriptions
7. Pre-opening Training, Set-up and Simulations
8. Operating Budget Planning



MARKET RESEARCH & FEASIBILITY



CONCEPT & BRAND DEVELOPMENT



DESIGN & TECHNICAL SERVICES



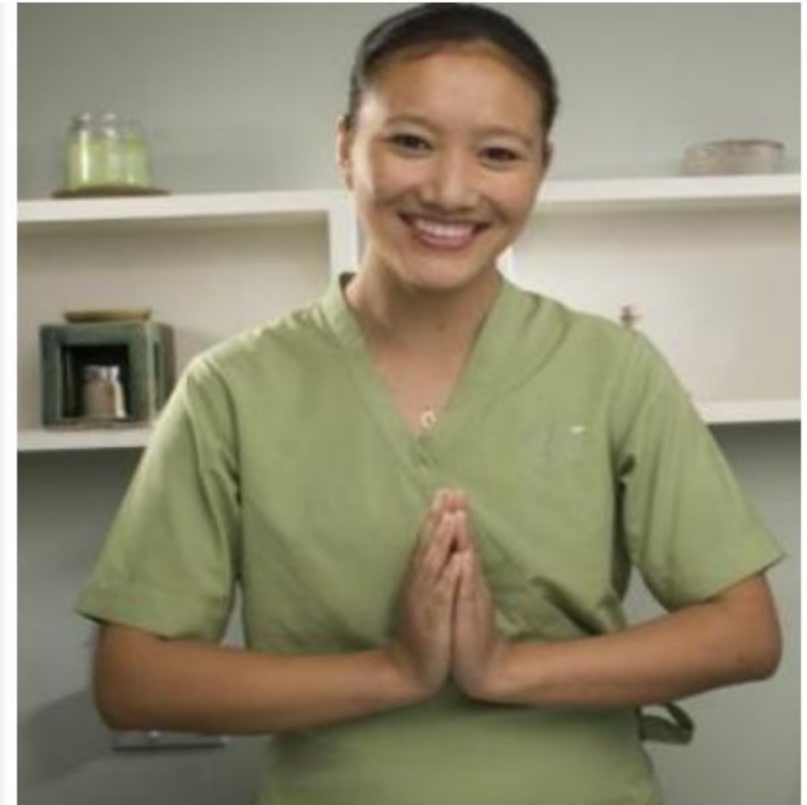
PRE-OPENING SERVICES & TRAINING



MANAGEMENT

Scope includes:

1. On-going Operational Management
2. Sales & Marketing Support
3. Operational Collateral Development
4. KPIs and P&L Analysis and Action Planning
5. Operational Reviews
6. HR, Training and Development
7. Mystery & Operational Audit
8. Quarterly Performance Audit





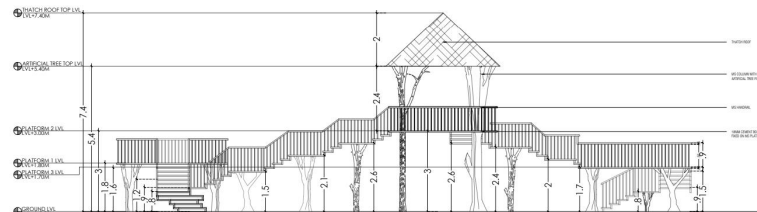
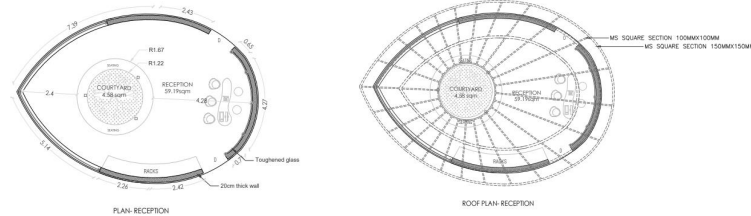
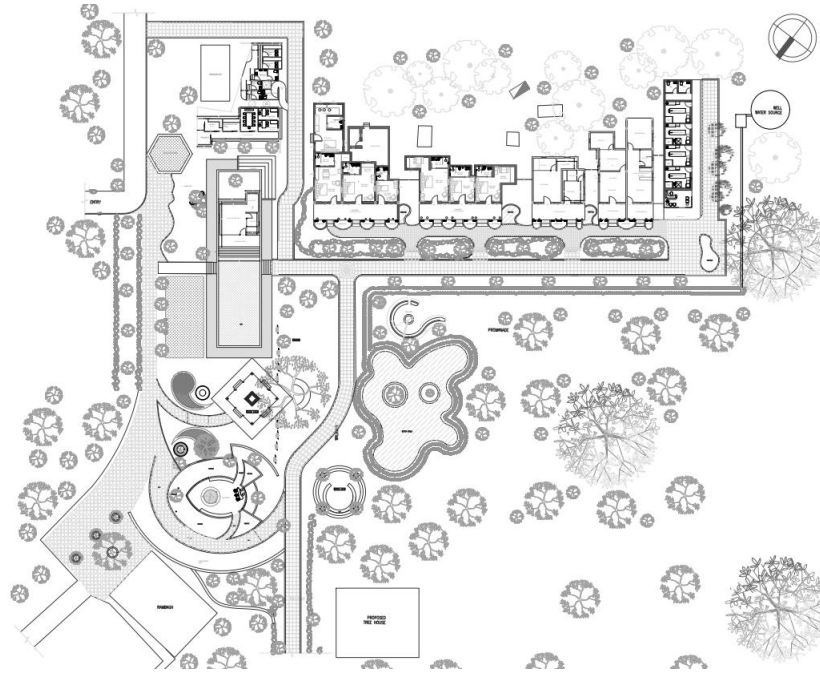
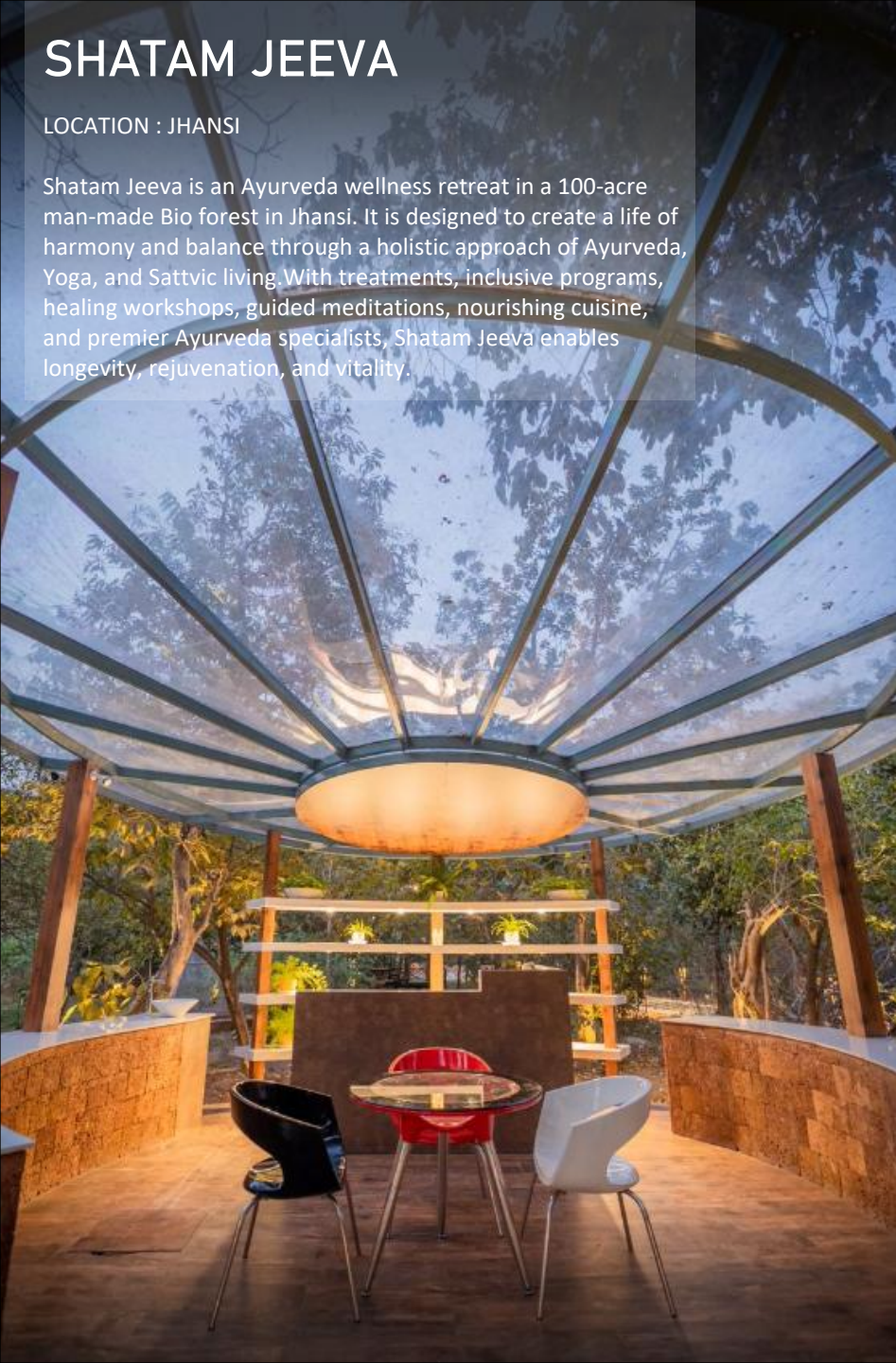
SPA & WELLNESS ARCHITECTURE, INTERIOR DESIGN AND
TURNKEY CONSULTANCY PROJECTS

(WELLNESS RETREATS, HOTEL SPAS & SALONS)

SHATAM JEEVA

LOCATION : JHANSI

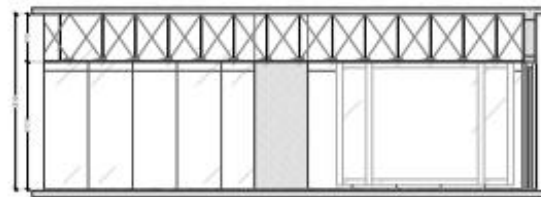
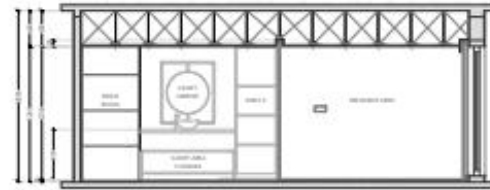
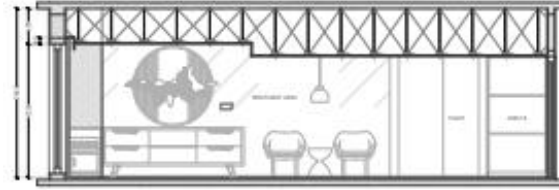
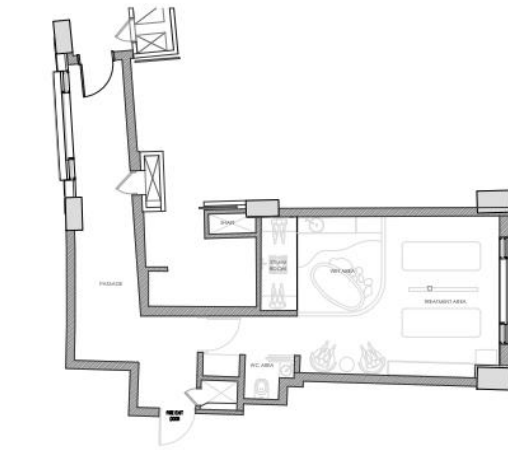
Shatam Jeeva is an Ayurveda wellness retreat in a 100-acre man-made Bio forest in Jhansi. It is designed to create a life of harmony and balance through a holistic approach of Ayurveda, Yoga, and Sattvic living. With treatments, inclusive programs, healing workshops, guided meditations, nourishing cuisine, and premier Ayurveda specialists, Shatam Jeeva enables longevity, rejuvenation, and vitality.



QUAN SPA, JW MARRIOTT

LOCATION : CHANDIGARH

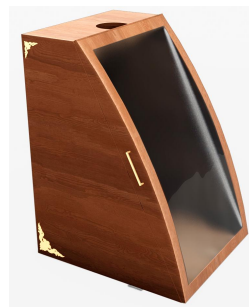
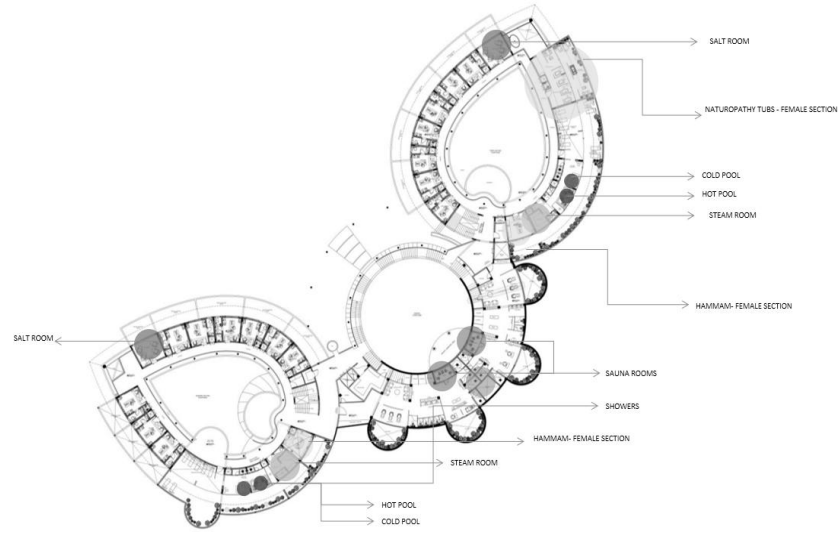
With 6 treatment rooms and a exclusive couple treatment room, the Quan Spa interiors is the definition of grandeur and luxury. The couple treatment room was done in a rustic finish with elements to subtly accentuate each area and give a very fulfilling experience.



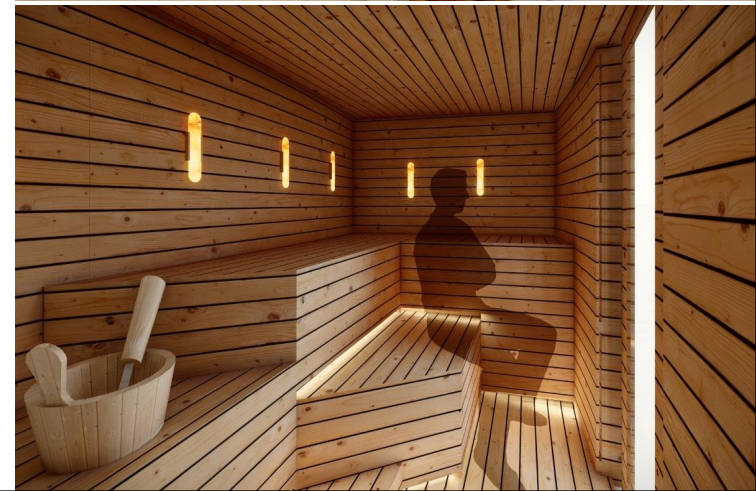
SWASTIK SPIRITUAL RETREAT

LOCATION : PUNE

SPREAD OVER A SPRAWLING 5 ACRES OF LUSH GREEN LANDSCAPES, THIS RETREAT HAS A WIDE RANGE OF TREATMENTS LIKE SALT THERAPY, HYDROTHERAPY, AYURVEDA ROOMS, ETC FOR WHICH CONCEPTS WERE DERIVED AND FF&E SUPPLIED.



FF&E



KSHEMAVANA

LOCATION : BANGALORE

Kshemavana is a sanctuary for those who seek a wholesome healing process – for their body as well as mind. Every method is natural and holistic within its walls, allowing naturopathy and yogic sciences to set a course of rejuvenation.



HYDROTHERAPY TUBS

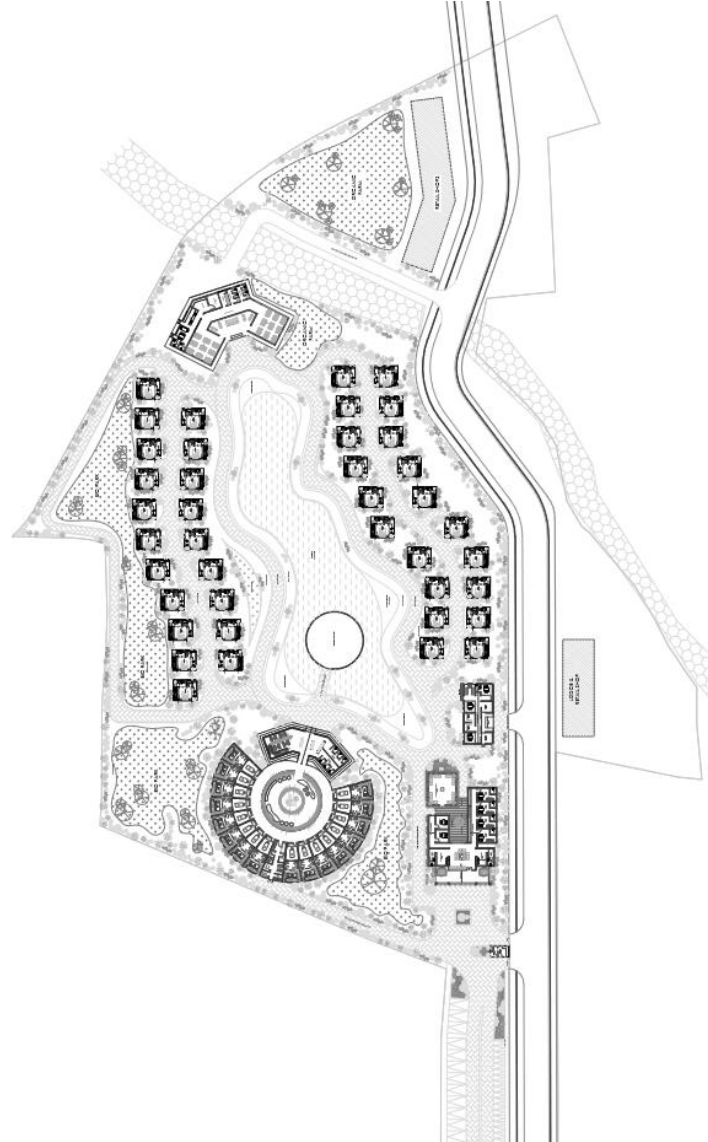


STEAM ROOM,
JACUZZI & SAUNA
DESIGN



ORGANO ANTHARAM RESORT

LOCATION : HYDERABAD



DIGANTAA RESORT

LOCATION : UTTARAKHAND

Digantaa Resort is a luxurious accommodation in Mukteshwar that offers a host of modern amenities for a relaxing vacation in the arms of nature.



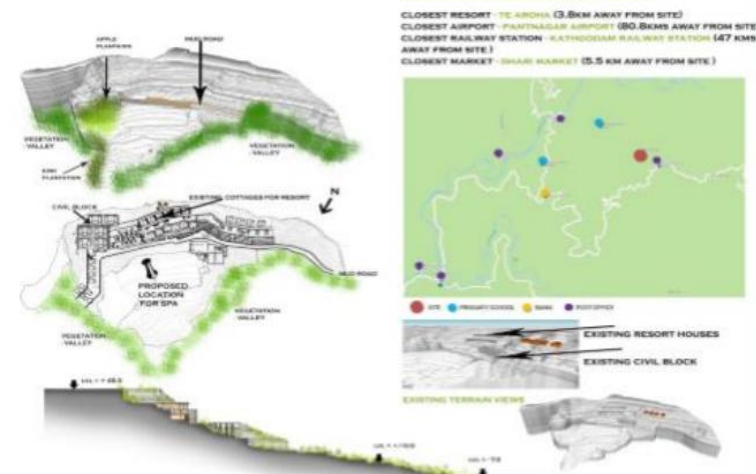
MASTER PLAN
VERTIKA DESTINATION SPA RESORT
DHAMACHALI

DESTINATION SPA RESORT



DESIGN
CONCEPT

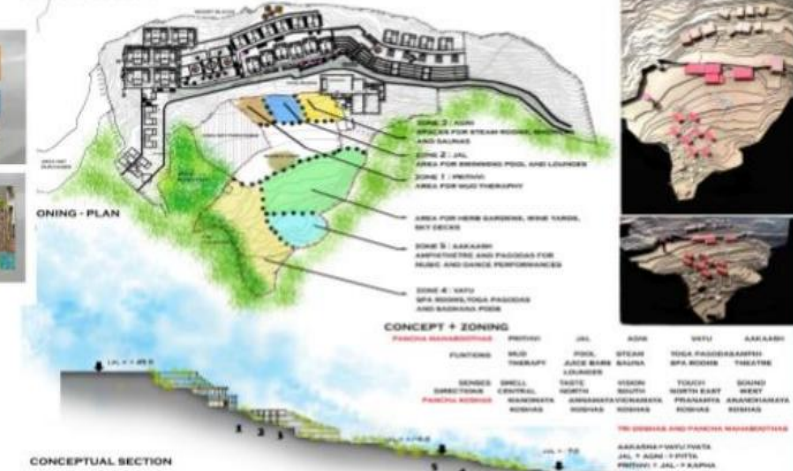
SITE ANALYSIS



AMENITIES AVAILABLE AROUND THE SITE

CLOSEST RESORT - TE ARONIA (3.8KM AWAY FROM SITE)
CLOSEST AIRPORT - PANTNAGAR AIRPORT (80.8KMS AWAY FROM SITE)
CLOSEST RAILWAY STATION - KATHODGAN RAILWAY STATION (47 KMS AWAY FROM SITE)
CLOSEST MARKET - DHAM KUREET (5.5 KM AWAY FROM SITE)

ZONING



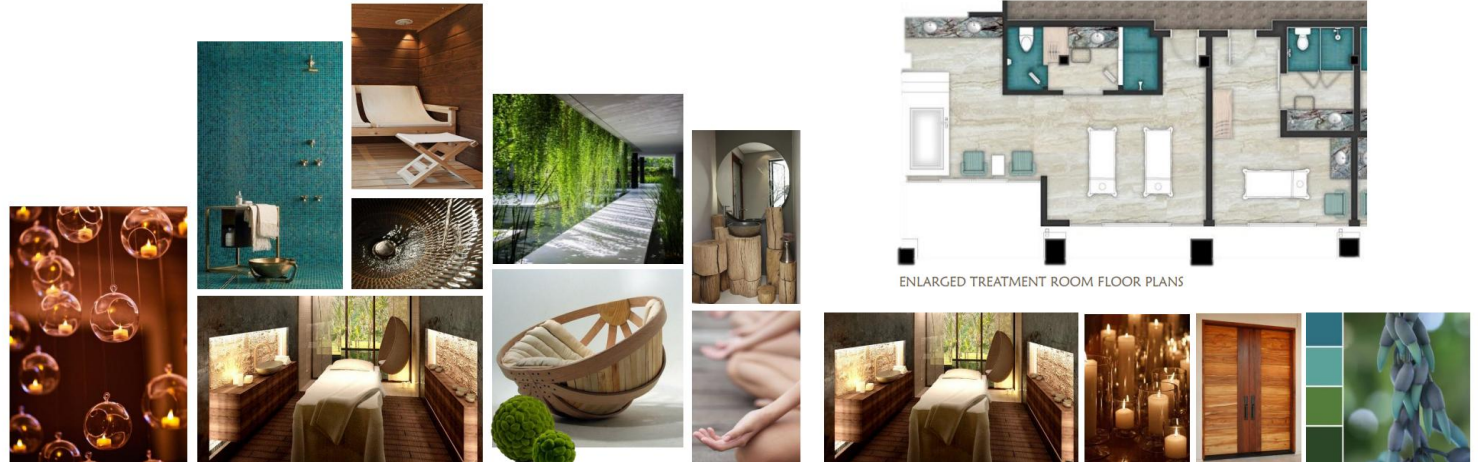
CONCEPT + ZONING

PINK	GREEN	BLUE	YELLOW	ORANGE	RED	GREY	TEAL	WHITE	BLACK
PLANTING	SPA	YOGA	SAKASHI	RESTAURANT	RECEPTION	OFFICE	STAIRS	WALLS	ROOF
SAKASHI	RESTAURANT	OFFICE	STAIRS	WALLS	ROOF	SAKASHI	RESTAURANT	OFFICE	STAIRS
RESTAURANT	OFFICE	STAIRS	WALLS	ROOF	SAKASHI	RESTAURANT	OFFICE	STAIRS	WALLS



WESTIN HEAVENLY SPA

LOCATION : RISHIKESH



ENLARGED TREATMENT ROOM FLOOR PLANS



VIJAYSHREE HERITAGE VILLAGE

LOCATION : HAMPI, KARNATAKA

Jayshree Resort and Heritage Village is a landmark resort spread over 20 acres of beautifully landscaped garden.

The design of the resort is the perfect blend of classic colonial aristocratic architecture in a contemporary setting. The elegant cottages are laid out in small clusters, they are garland with soothing landscapes with Manicured Lawns and pathways with intermingled Magical Fountains and Water-Bodies to give a Mystic Atmosphere, the Trees Bloom with Seasonal Colors.



QUAN SPA, JW MARRIOTT

LOCATION : BANGALORE



CONRAD SPA

LOCATION : BANGALORE

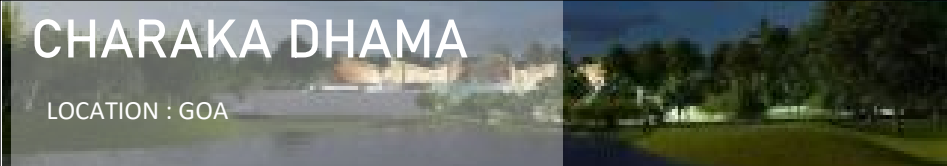


KEY PLAN — LEVEL 3



CHARAKA DHAMA

LOCATION : GOA



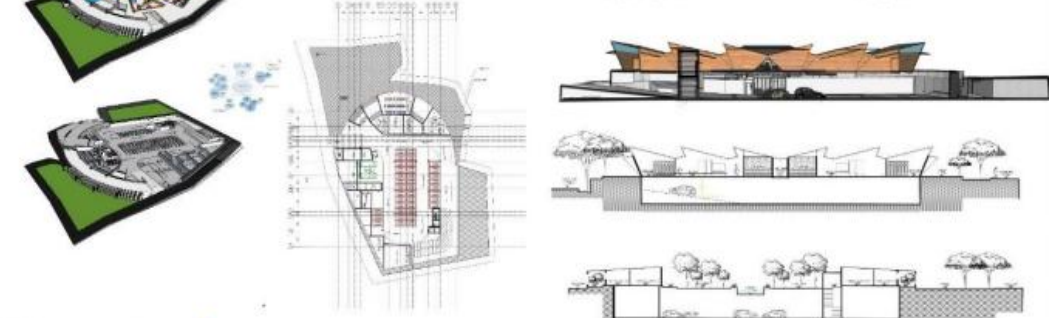
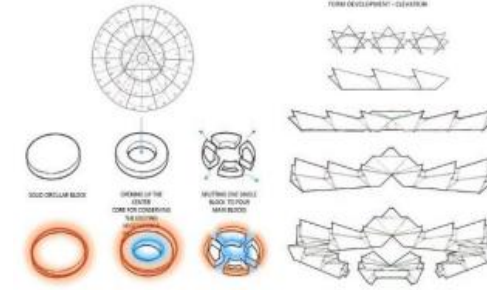
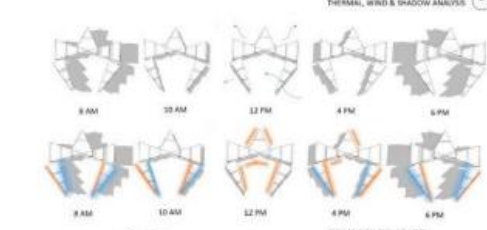
MADE WITH LUMION



MADE WITH LUMION



MADE WITH LUMION TRIAL VERSION

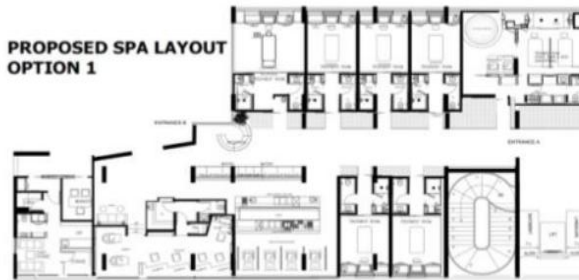


JIVA SPA,TAJ VIVANTA

LOCATION : GOA



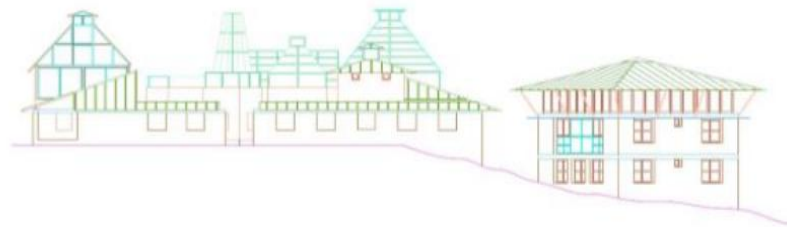
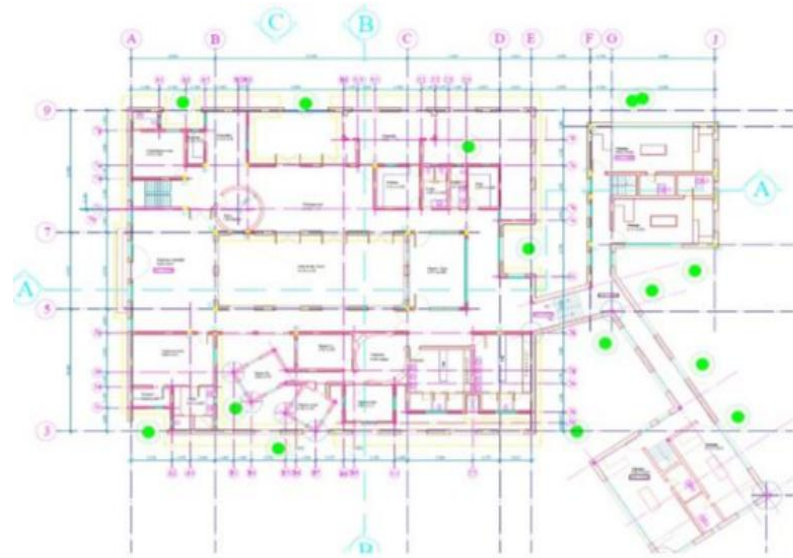
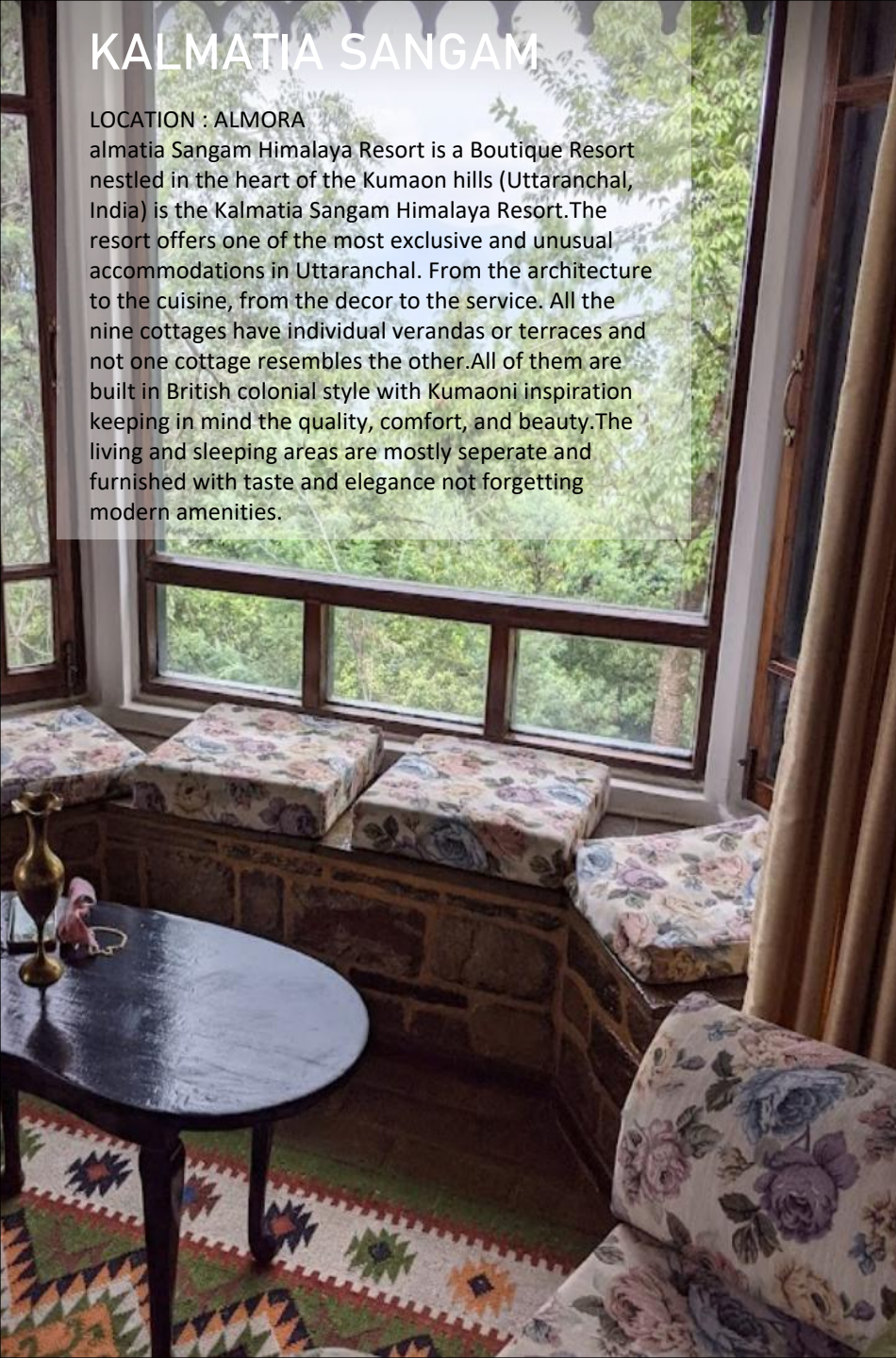
PROPOSED SPA LAYOUT
OPTION 1



KALMATIA SANGAM

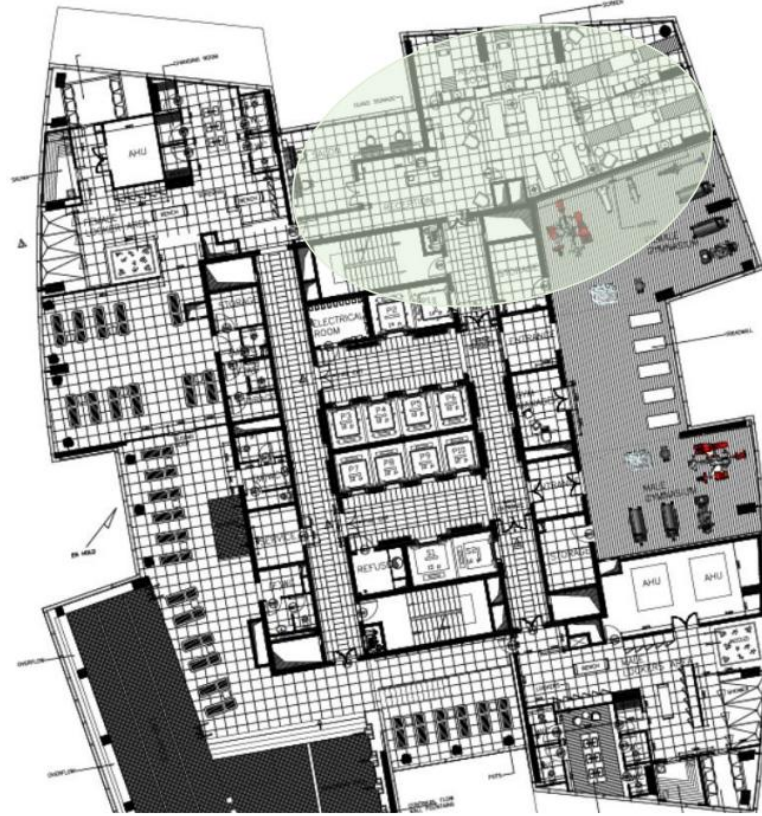
LOCATION : ALMORA

almatia Sangam Himalaya Resort is a Boutique Resort nestled in the heart of the Kumaon hills (Uttaranchal, India) is the Kalmatia Sangam Himalaya Resort. The resort offers one of the most exclusive and unusual accommodations in Uttaranchal. From the architecture to the cuisine, from the decor to the service. All the nine cottages have individual verandas or terraces and not one cottage resembles the other. All of them are built in British colonial style with Kumaoni inspiration keeping in mind the quality, comfort, and beauty. The living and sleeping areas are mostly separate and furnished with taste and elegance not forgetting modern amenities.



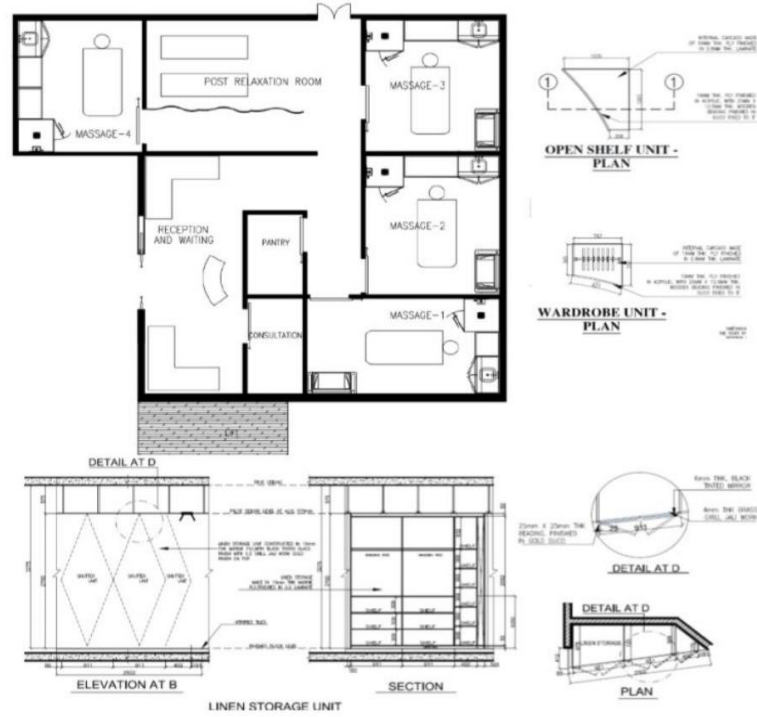
INTERCONTINENTAL SPA

LOCATION : DOHA



RAMADA HOTEL

LOCATION : BANGALORE



NAAD WELLNESS

LOCATION : HARYANA

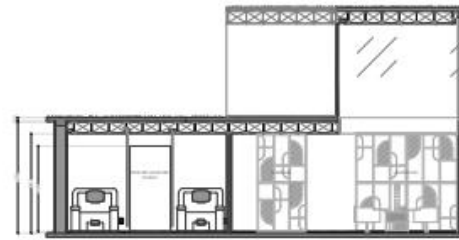
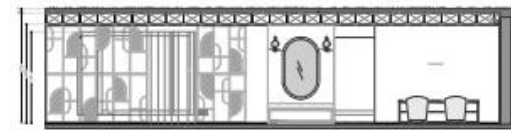
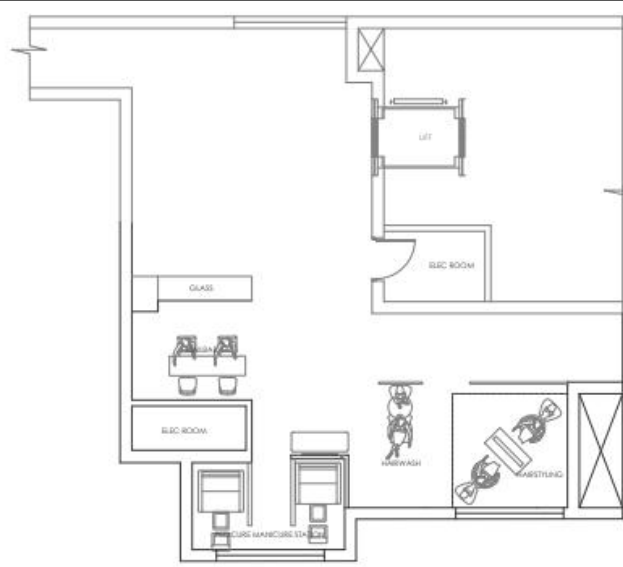
With 6 treatment rooms and a exclusive couple treatment room, the Quan Spa interiors is the definition of grandeur and luxury. The couple treatment room was done in a rustic finish with elements to subtly accentuate each area and give a very fulfilling experience.



love my 'do SALON JW MARRIOTT

LOCATION : CHANDIGARH

Love my do is the in-house salon located in JW MARRIOTT, Chandigarh. With a total area of 500 sqft, it has a luxury nailbar, hair styling stations, Pedicure stations and all facilities for a luxurious self-pampering session.

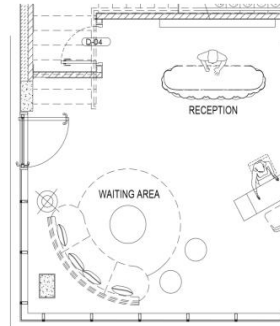


EMBASSY BOULEVARD SALON

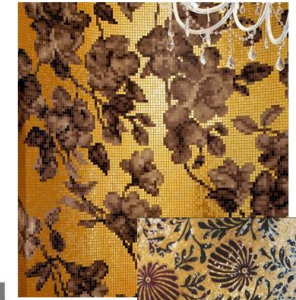
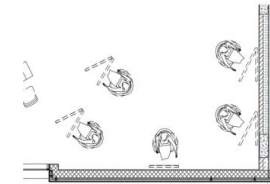
LOCATION : Bangalore

A Luxury Salon in the contemporary club for selected few to get together and take a break all in the luxury and comfort of a private place. This club is a private haven away from home. A place to entertain friends, family and clients, hold business meetings or spend a lazy Sunday afternoon.

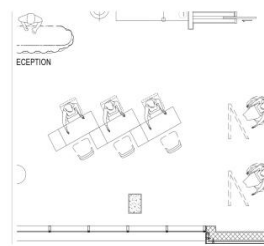
RECEPTION AND WAITING AREA



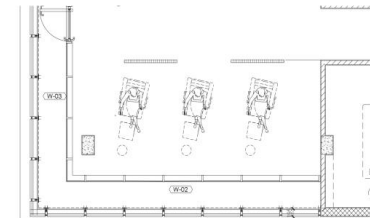
HAIR STYLING AREA



MANICURE AREA



PEDICURE AREA



The image features a white background with two large, light blue geometric shapes in the corners. The shape in the top-left corner is a square with a diagonal cut from the top-right to the bottom-left. The shape in the bottom-right corner is a square with a diagonal cut from the bottom-left to the top-right. Centered between these shapes is the text "SPA & WELLNESS CONSULTANCY/OPERATIONS/FF&E AND OSE".

SPA & WELLNESS CONSULTANCY/OPERATIONS/FF&E AND OSE

PROJECT :

CAPE WELIGAMA RESORT & SPA ,
KAPPARATATO, WELIGAMA, SRILANKA

PROJECT TIMELINE :

Jan 2014 - May 2014

SCOPE OF WORK :

Oakworks Spa Equipments Supply and
Installation



PROJECT :

AWAY SPA / W DUBAI The PALM

PROJECT TIMELINE :

Jun 2017 - Jan 2018

SCOPE OF WORK :

SUPPLY OF SPA OSE



PROJECT :
ONE & ONLY SPA AND RESORTS - RWANDA

PROJECT TIMELINE :

Jun 2017 - Sep 2018

SCOPE OF WORK :

SPA FFE & OSE SUPPLY



PROJECT :

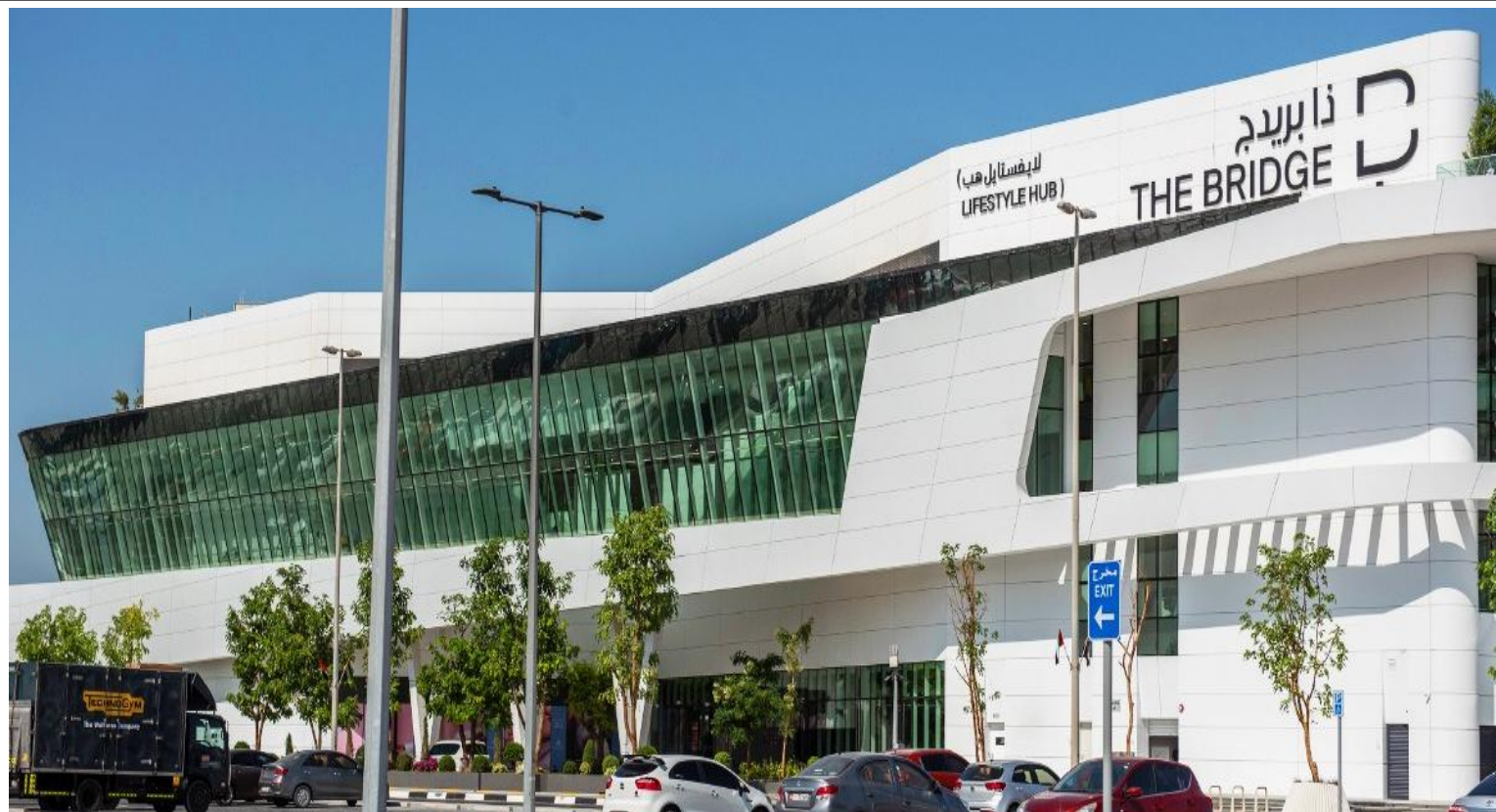
THE BRIDGE, ABUDHABI

PROJECT TIMELINE :

Sep 2021 - Feb 2022

SCOPE OF WORK :

FFE SUPPLIES, PRODUCT CUSTOMISATION



PROJECT :

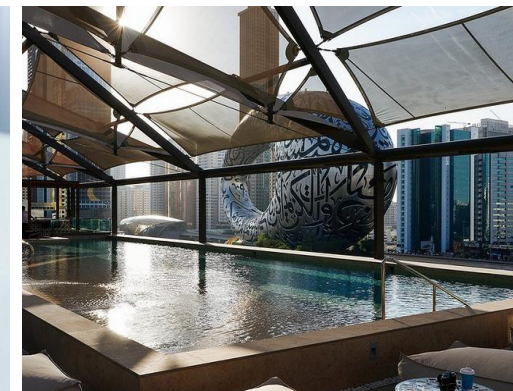
SPA @ 25h ONE CENTRAL , DUBAI

PROJECT TIMELINE :

Sep 2021 - Feb 2022

SCOPE OF WORK :

FFE SUPPLIES



PROJECT :

THE SPA AT ADDRESS FOUNTAIN VIEWS,
DUBAI

PROJECT TIMELINE :

Jun 2017 - Feb 2018

SCOPE OF WORK :

SUPPLY OF SPA OSE



PROJECT :

PEMA RESORT, VISHAKAPATNAM,
ANDHRA PRADESH, INDIA

PROJECT TIMELINE :

May 2014 - Apr 2015

SCOPE OF WORK :

Human Resource Consultancy Services
Spa Equipments Supply and Installation



PROJECT :
WESTIN KOLKATA

PROJECT TIMELINE :

Jan 2018 - Mar 2018

SCOPE OF WORK :

FF&E OSE



PROJECT :

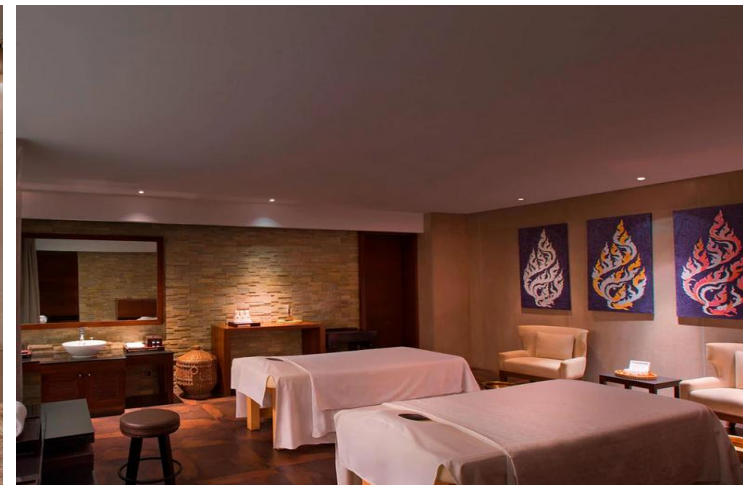
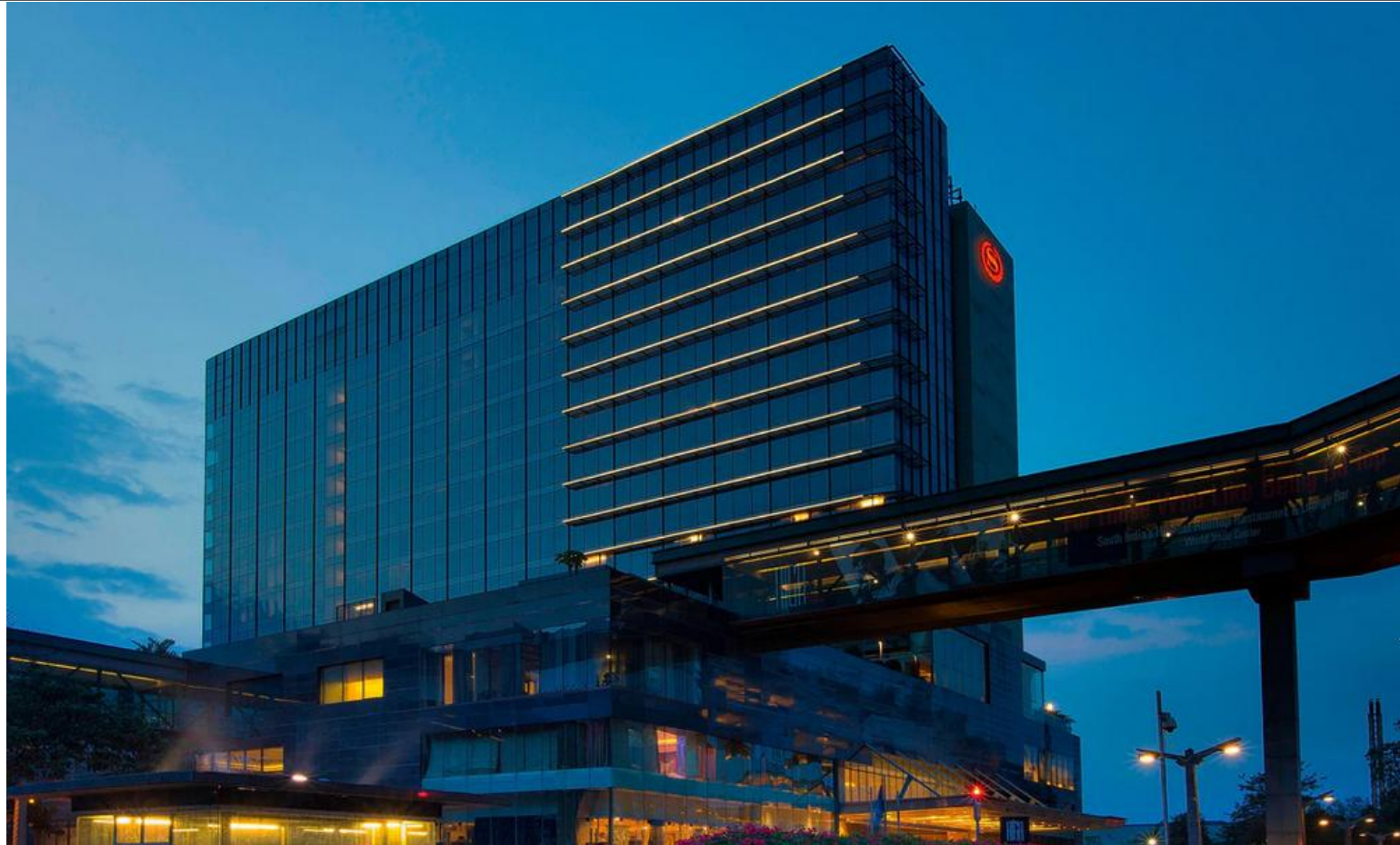
SHERATON GRAND , BENGALURU

PROJECT TIMELINE :

Apr 2017 - Mar 2018

SCOPE OF WORK :

Shine Spa turnkey consultancy and Equipment supply



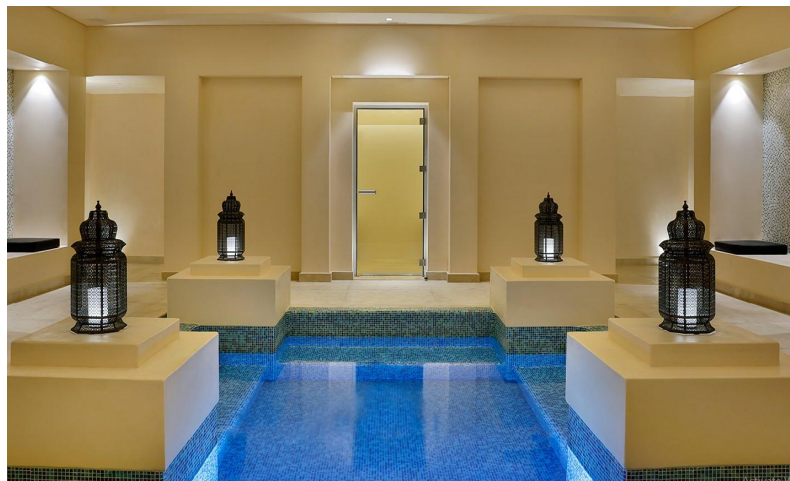
PROJECT :
SARAY SPA-JUMEIRA AL WATBA RESORTS,
ABUDHABI

PROJECT TIMELINE :

Jun 2017 - Apr 2018

SCOPE OF WORK :

SUPPLY OF SPA OSE



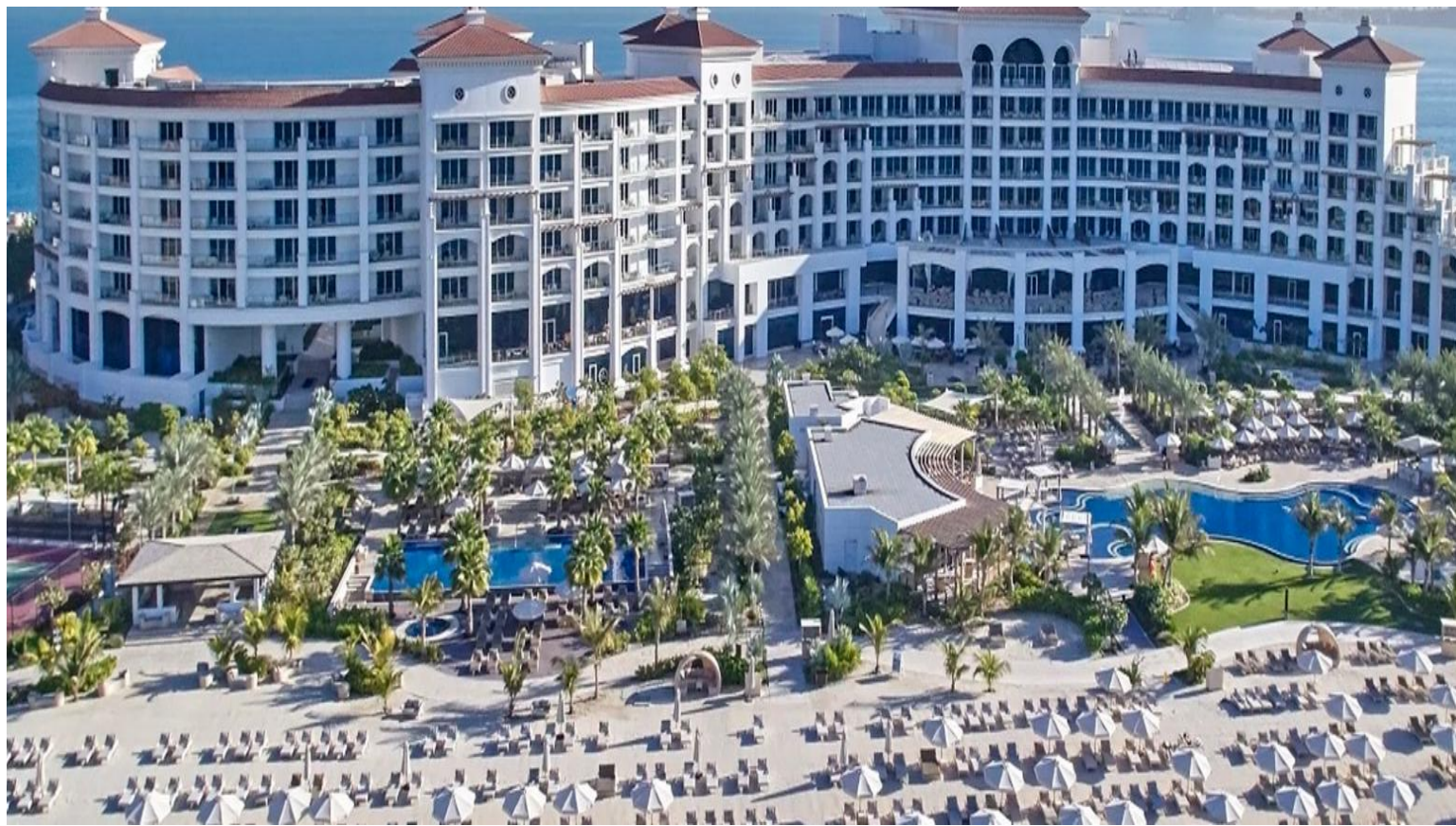
PROJECT :
WALDORF ASTORIA SPA, DUBAI

PROJECT TIMELINE :

Jun 2017 - Aug 2018

SCOPE OF WORK :

SUPPLY OF SPA EQUIPMENTS AND OSE



PROJECT :

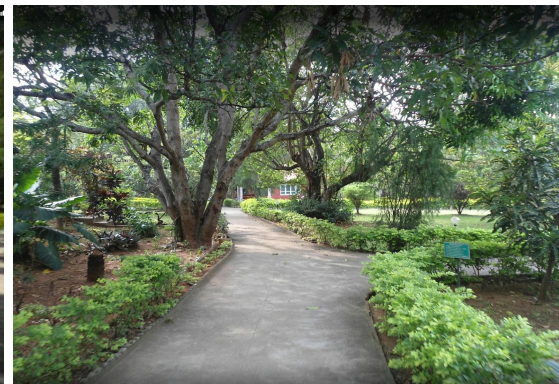
PRAKRUTHI AROGYA DHAMA , Mandya, Karnataka, INDIA

PROJECT TIMELINE :

Apr 2001 - Sep 2002

SCOPE OF WORK :

Turn Key Wellness Center Set up and operations
Management



PROJECT :

CHAMPNEYS SPA -AYURVEDA SECTION,
Intercontinental The Grand Resort & Spa ,
Canacona, Goa ,INDIA

PROJECT TIMELINE :

Oct 2003 - Feb 2005

SCOPE OF WORK :

AYURVEDA SPA STANDARD OPERATING
PROCEDURE AND PROTOCOLS
FORMULATIONS, AYURVEDA TREATMENTS
TRAINING



PROJECT :

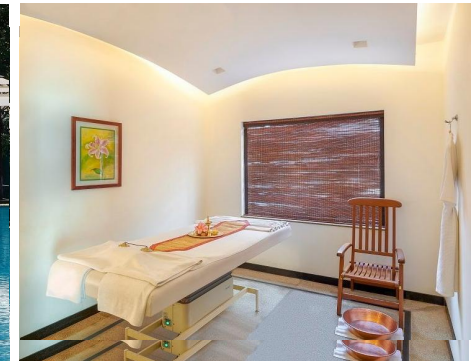
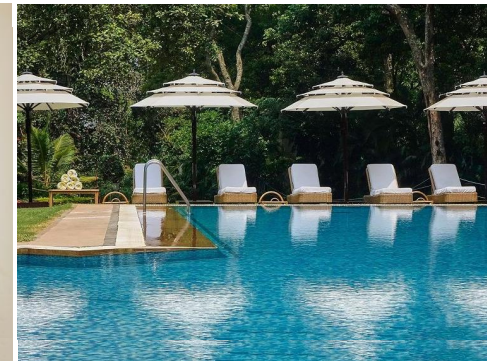
REJUVE SPA , Bangalore, INDIA

PROJECT TIMELINE :

Apr 2005 - Sep 2005

SCOPE OF WORK :

Pre Opening & Spa Marketing Consultancy



PROJECT :

SOBHA LIFESTYLE HEALTH CLUB , Bangalore,
Karnataka , INDIA

PROJECT TIMELINE :

Mar 2011 - Jun 2012

SCOPE OF WORK :

TURN KEY SUPPLY OF SPA AND SALON
EQUIPMENTS AND CONSULTANCY SERVICES



PROJECT :

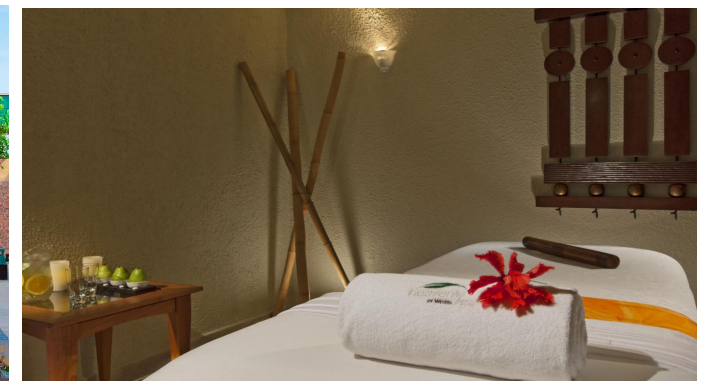
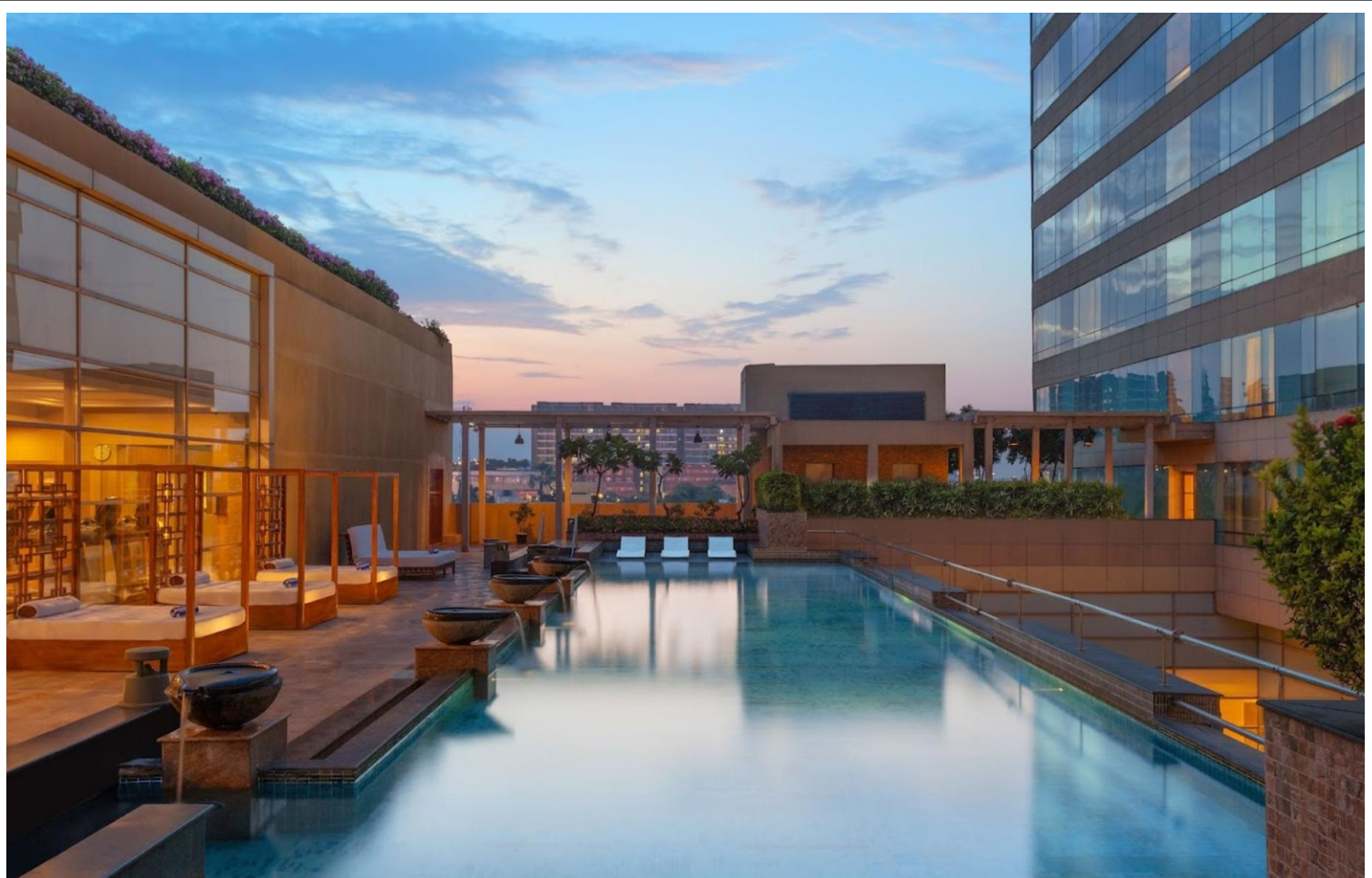
WESTIN , HEAVENLY SPA , Chennai , Tamilnadu,
INDIA

PROJECT TIMELINE :

Apr 2012 - Sep 2012

SCOPE OF WORK :

Turn key supply of spa Equipments and
Operating Tools



PROJECT :

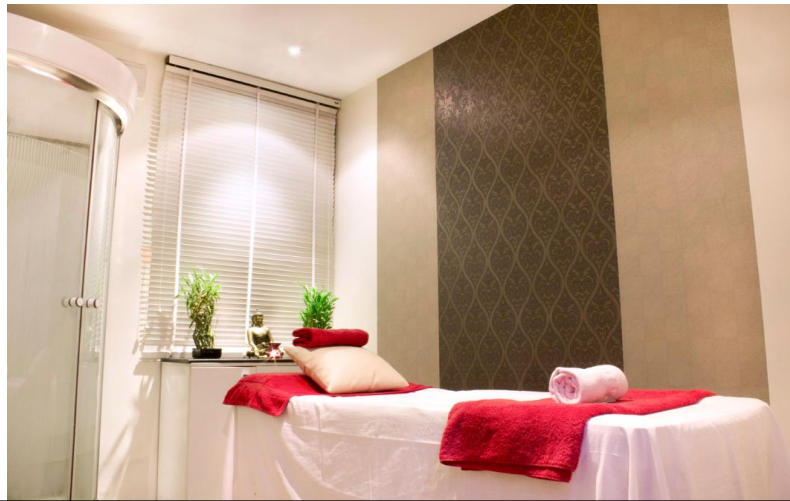
SHEHNAZ STARLITE SALON ,
Chennai ,Tamilnadu, INDIA

PROJECT TIMELINE :

Dec 2012 - Jan 2013

SCOPE OF WORK :

Pre -Opening Consultancy ,Designing and MEP
with Interiors Execution



PROJECT :

NIRVA SPA , Hyderabad, Andhra Pradesh,
INDIA

PROJECT TIMELINE :

Mar 2010 - Oct 2010

SCOPE OF WORK :

OPERATIONAL CONSULTANCY



PROJECT :

HBN COUNTRY CLUB & SPA, Bhatinda , Punjab ,
INDIA

PROJECT TIMELINE :

Jan 2011 - Apr 2011

SCOPE OF WORK :

TURN KEY SUPPLY OF CLUB EQUIPMENTS AND
OPERATIONS MANAGEMENT



PROJECT :

INNS SPA , AMET MAJESTY CRUISE-SHIP,
Chennai , Tamilnadu, INDIA

PROJECT TIMELINE :

Nov 2010 - Dec 2011

SCOPE OF WORK :

SPA CONSULTANCY SERVICES, TURN KEY
SUPPLY OF EQUIPMENTS AND OPERATING
TOOLS , OPERATIONS MANAGEMENT



PROJECT :

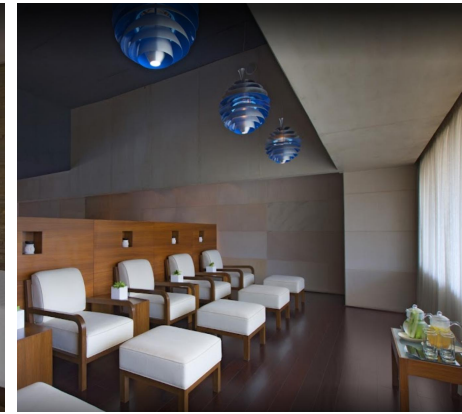
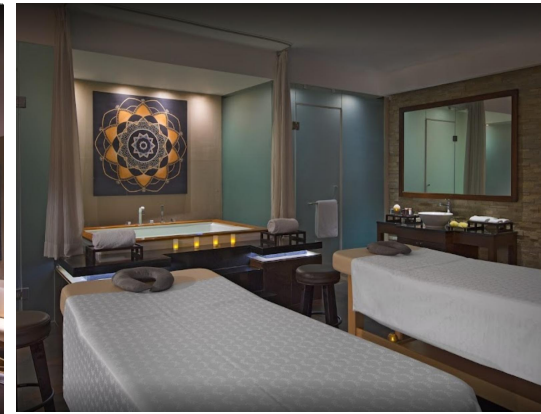
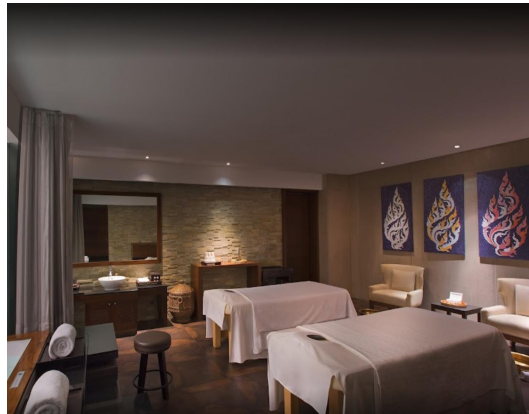
SHINE SPA , SHERATON , Bangalore, Karnataka,
INDIA

PROJECT TIMELINE :

Mar 2013 - Sep 2013

SCOPE OF WORK :

Equipment & Operating Tools supply and
Products Consulting



PROJECT :

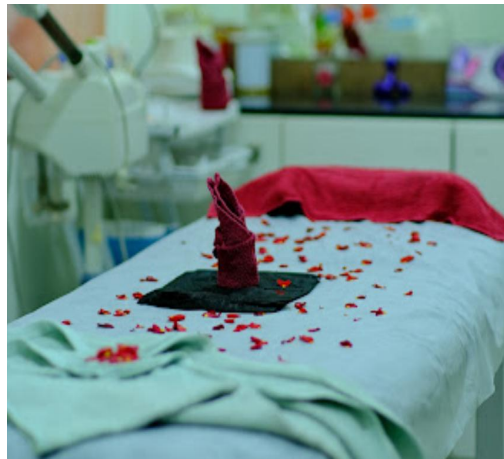
SPALON, SHIMOGA, KARNATAKA,, INDIA

PROJECT TIMELINE :

Dec 2013 - Feb 2014

SCOPE OF WORK :

SPALON Turn key set up Franchise including Interiors, MEP Contract, Equipment supply, Human Resource recruitment and training and Operational assistance



SPA & WELLNESS FUNCTIONAL DESIGN & ENGINEERING

STEAM HYDRO^{CO}
SAUNA & BIO SAUNA

SAUNA & BIO SAUNA HYDRO^{CO}
SAUNA & BIO SAUNA

WATER & ICE HYDRO^{CO}
SAUNA & BIO SAUNA

The Hydroco Touch is a separate control panel that pairs perfectly with the steam generators. Steam Generators are made from thick and fine hairline stainless metal which can be mounted on a concrete or acrylic surface. This on-resonant control is perfect for modern design steam rooms. The touch control can be ordered as a set with steam generators or as a separate item to upgrade your existing control. You may also want to include the decalcifying solution in your purchases in order to easily remove the calcium deposits in your steam tank. Try the aroma therapy oils as well to freshen your steam room in your every steam bathing.

Reliable, efficient and user-friendly. Those are proven adjectives of the Hydroco Steam generators. These steam generators are engineered to last long. It is crafted from high quality stainless steel (SS304), dependable and fully concealed steam tanks. They have an integrated water detection system that relay signal to automatically fill water in the tank when needed.

STP steam generators are fabricated from high quality stainless steel sheets that are highly resistant in corrosion. It comes with plenty of product features that are beneficial to users. It has a standby mode option that allows water inside to stay close to its boiling point which produces steam quickly after switching on.

The Hydroco steam generator control uses soft rubber buttons that can be gently pressed for your steam operation. The rectangular design with alluring silver lining fits in a classy steam room. It can be mounted directly on a wall or use a wooden holder to avoid deep wall cutting.

Hydroco control has a LED digital display and keys with significant functions for a lavish steam bathing. The keys are with significant functions for a lavish steam

Power (kW)	Steam Room Volume (m ³)	Supply Voltage	Current (Ampere)	Phase	Wire Size (mm ²)	Water Usage (L)
3.0	3 max	220-240 / 380-415	14 / 8	1N / 2N	2.5 / 2.5	3.5
3.5	3.5 max	220-240 / 380-415	16 / 9	1N / 2N	4.0 / 2.5	3.5
4.0	4 max	220-240 / 380-415	17 / 10	1N / 2N	4.0 / 2.5	3.5
4.5	2-5	220-240 / 380-415 / 380-415	20 / 12 / 7	1N / 2N / 3N	4.0 / 2.5 / 2.5	3.5 / 4.75
5.0	2-6	220-240 / 380-415	22 / 8	1N / 2N	4.0 / 2.5	3.5
6.0	3-10	220-240 / 230 / 380-415	26 / 16 / 9	1N / 3 / 3N	6.0 / 2.5 / 2.5	4.75
7.5	4-15	220-240 / 230 / 380-415	33 / 19 / 11	1N / 3 / 3N	6.0 / 4.0 / 2.5	4.75
9.0	8-20	220-240 / 230 / 380-415	40 / 22 / 13	1N / 3 / 3N	10 / 4.0 / 2.5	4.75
12.0	15-18	380-415	18	3N	4.0	8
15.0	22-40	380-415	22	3N	4.0	8

Included in the steam generator package

Optional sensor features



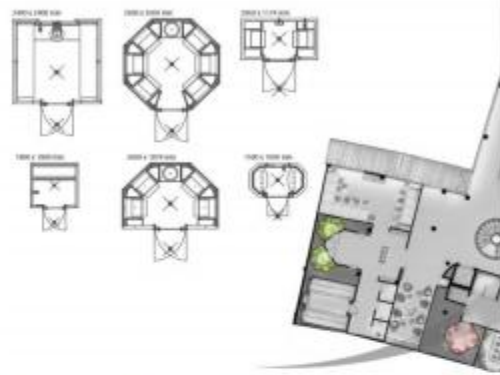
Wooden holder for Classic control Steam head cover Aroma pump Aroma program feature Fan program feature Dimmer program feature

HydrocoControl Steamhead Temperature sensor with wire and sensor holder Autodrain * Over pressure Valve R12 Cable



STEAM HYDRO^{CO}

BOOK YOUR UNIT



EASY OPERATION

The easy mode operation allows users a quick use. The most important keys are prompt into the display (Temperature, Session Time and Lights). This setting also secures the control's main settings from unauthorized configuration.

ANIMATED BUTTONS

Buttons are animated so that users can easily distinguish which functions are switched ON. These functions are the Steam ON, Aroma, Light (Dimmer) and Fan.

FLEXIBLE PRESET SESSION TIME

The preset session time can be set up to 24hrs in any day of the week. One may have multiple setups in a day. You may also set your session time days ahead with this function. The preset function also allows you to copy the pre-setup from day to another.

DECALCIFING

Using the Control Eliminating calcium deposits inside the steam tank can now be done quickly using the decalcifying function. Follow the simple procedures on the control.

MEMORY BACKUP

The Blackout Memory function saves current settings and automatically continues to operate with the same settings, in case of a power interruption. When blackout memory is switched ON, it auto-save the settings every 4 hours.

HEATING ELEMENT ERROR DISPLAY

The control is capable of displaying errors when there is a broken heating element. This helps a lot to ease determining malfunctions of the steam generator.

REMOTE CONTROL

The remote control operation is used for automated households. Previous settings are used during this operation. You may set the Light, Fan and Aroma when the remote control is activated.

EMERGENCY ALARM

The control has a provision for emergency alarm system that can be hooked into a panic button inside the steam room.

TEMPERATURE UNIT OF MEASURE

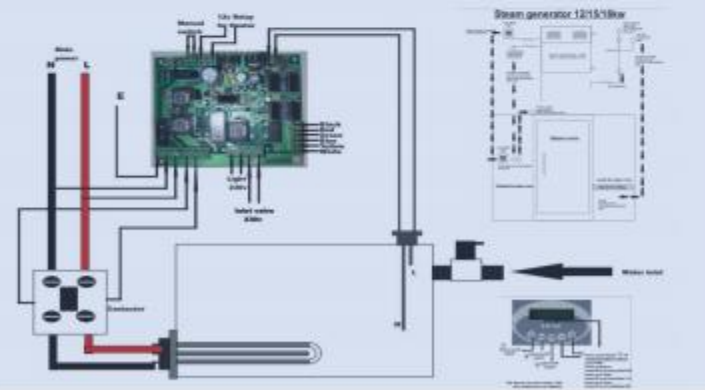
There will be no worries converting from Celsius to Fahrenheit as the control manages to easily convert them.

AUTODRAIN FUNCTION

Automatically drains the water after every use and refills every time steam generator is switched ON. It makes sure that the water used for steam bathing is fresh and new.

Steam tank	1.8 tank 100-gal flow pressure withstand capacity (Over 100psi)
Outer body	MS body powder coated (inner tank treatment) (300-120 inches)
Water inlet pipe	1/2 inch through floor and HWI
Water inlet Pressure	Maximum 2bar
Steam outlet pipe	1/2 inch for hole
Drain pipe	1/2 inch
Drain type	Manual operation
Heater coil capacity	10w, 1.5kw, 3kw, 4.5kw, 6kw, 9kw, 12kw, 20kw
Power supply	110V, 220V, Three phase line connection
Pressure Valve	2bar pressure withstand capacity and electronic valve of 1.2bar
Thermostat	100deg celsius
Steam control system	Digital Electronic control system with variable temp and time set
Operating pressure	1.2bar (100kPa-200kPa)
Capacity of the Tank	30L
Water fill	10-15L
Usage of water /hour	1L/2m
Internal wiring	Tuffan wire
Glass wool density	100mm fabric
Water level sensor	100 grade float

SPECIFICATIONS



STEAM HYDRO^{CO}

BOOK YOUR UNIT



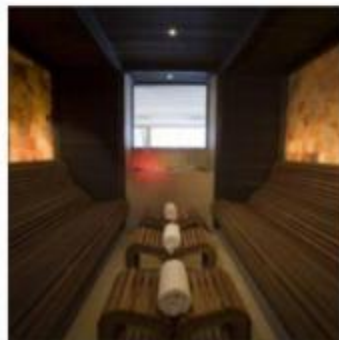
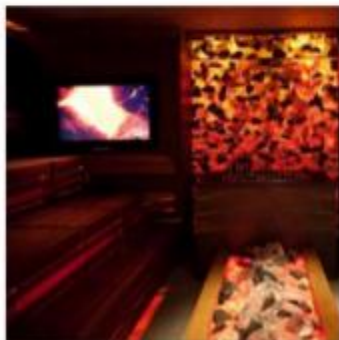
Herbal sauna Aqua Dome



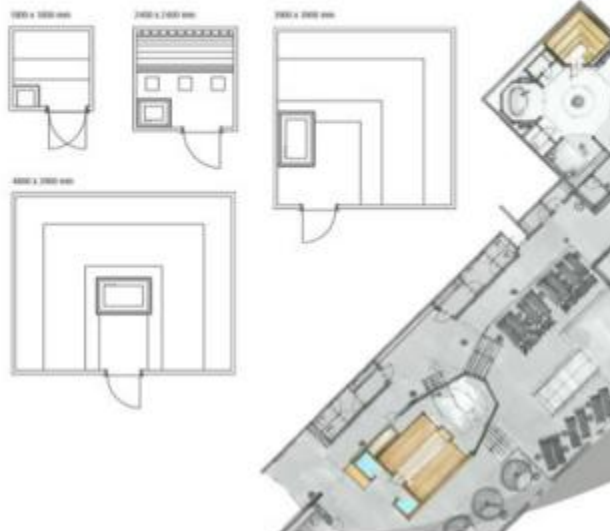
Panoramic sauna Golf & Spa Resort Austria



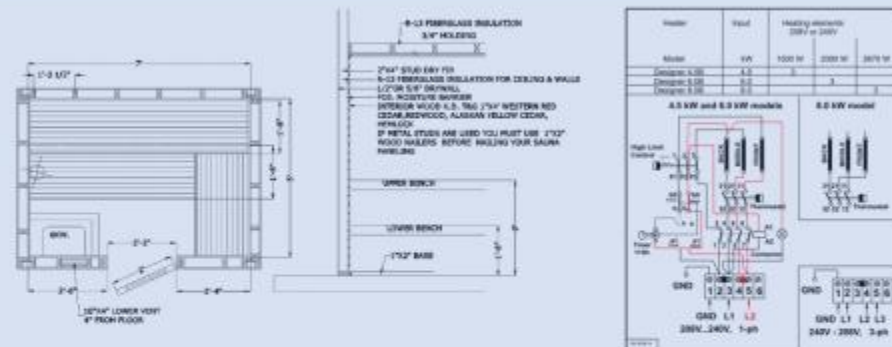
Sauna with natural stone Modified Natural



SAUNA & BIO SAUNA HYDROCO

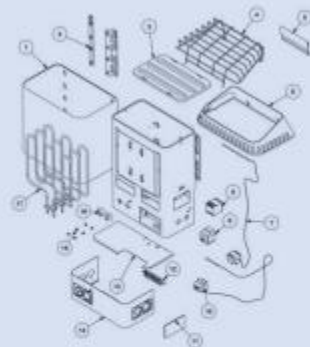


Heat is not just heat, and a sauna is not just a sauna. Hydroco appreciates the importance of using only the best materials and the most modern techniques and designs. All our saunas are available in our standard design series eco, lifestyle, alpine, stripe line, frame line, salt stone and ergo in the versions of balance, elegance or rustic as well as in an individual design. Our Saunas are available in 3 different versions – attractive, premium and luxury (corresponding characteristics of the cabin).



ELECTRONIC SAUNA		MANUAL SAUNA	
HYD-EL-SA-03	SINGLE/THREE PHASE	HYD-NL-SA-03	SINGLE/THREE PHASE
HYD-EL-SA-06	SINGLE/THREE PHASE	HYD-NL-SA-06	SINGLE/THREE PHASE
HYD-EL-SA-09	THREE PHASE	HYD-NL-SA-09	THREE PHASE
HYD-EL-SA-12	THREE PHASE	HYD-NL-SA-12	THREE PHASE
HYD-EL-SA-15	THREE PHASE	HYD-NL-SA-15	THREE PHASE
HYD-EL-SA-18	THREE PHASE	HYD-NL-SA-18	THREE PHASE

Free-standing floor model sauna heater which has been the industry standard for more than 25 years. Designed for large, commercial sized sauna rooms with the use of a separate control panel. A soft, even heat from the 60kg rock mass will provide great enjoyment to your customers. The Hydroco sauna heaters require three phase power.



#	Description	Part #
1	Designer Heater Skroud	8512-506
2	Heater Supports 4.5 & 8.0 kW	8250-960
3	Heater Supports 6.0 kW	8280-800
3	Rock Grate	8519-200
4	Rock Cap	8519-800
5	Capillary Heater	N/A
6	Heater Cap	8512-460
7	High Limit Switch	2128-510
8	Control Panel	2121-917
9	Terax	3183-804
10	Thermostat Control	3155-822
11	Control Hole - Cover	N/A
12	Terminal Block	2190-530
13	Lower Heater Cap	8512-448
14	Electrical Protective Cover	N/A
15	Thermit Switch	8555-18
16	Control Handle	2140-530
17	Stainless	See Chart



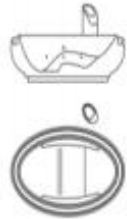
SPECIFICATIONS



SAUNA & BIO SAUNA HYDROCO



WATER & ICE HYDRO^{co}



105 x 173 x 600 mm



100 x 100 mm



110 x 60 x 400 mm

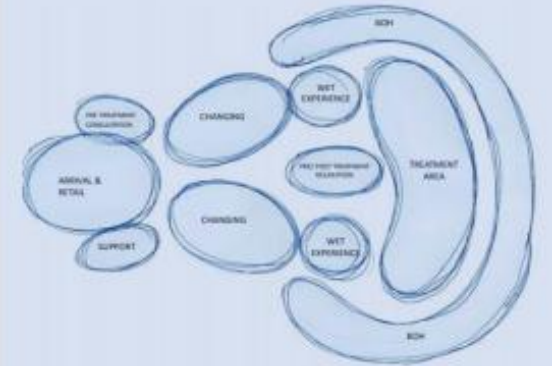


121 x 100 mm



As designers + engineers we provide a fully coordinated and integrated spa interior design solution. The combination of our experience and expertise combined with the creative flair of our design team has resulted in the company being acknowledged as highly innovative and successful in a truly competitive market. In addition to our design capability, we have a reputation for providing design and build solutions on time and on budget, thus providing our customers with high levels of confidence and peace of mind that are essential in the spa industry.

With our vast knowledge and experience you will receive a complete engineering package covering all the aspects of the pools and water features including all associated plant rooms. We can offer Concept Design Schematic Design Detailed & Design Development Construction & Tender Site Supervision





Chill Shower Systems With 2 ton compressor Water boosting pumping system Capacity 200 Ltrs S/S water Tanks And with digital controller

Power Output 1.5 ton Tr.

No of Person at a Time 6 per. Hr

Power Supply 1 phase 220v

Electricity current (A) 25Ax3

Specification for power wire (Sq.mm) 4

Heaters Cap. 1.0 kw comp

Electrical unit consume per hour 4

Duration >1500V

Resistance >20M Ω

TEMP Range +5 / +15°C

TIMER Range 1- 5 Hr

Pressure 3.5 kg

Pump 1 Hp Booster

Volume 200 ltrs

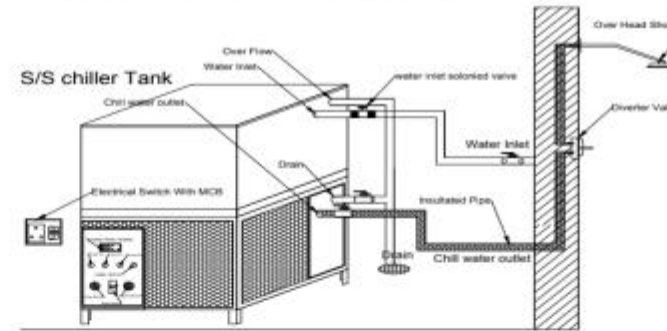
Production Time Chilling time 45 / 60 min

Water Tank Volume 200 ltrs

Outlet Single Line



Chilled Shower Bath Plumbing and electrical Layout



Plumbing Details
 Water Inlet: 1/2" with Ball valve Connection
 Drain: 1" with Ball valve Connection
 Chill water outlet: 1" with Ball valve Connection

Electrical Details
 MiniSwitch: ELCB-MCB 25 Ampe 100MA
 Phase: 1-Phase / 2 pole with 50 Hz N & Earthing
 Wire Size: 4 sqmm With color Code

WATER & ICE HYDRO^{CO}

CHILLED SHOWER

As designers + engineers we provide a fully coordinated and integrated spa interior design solution. The combination of our experience and expertise combined with the creative flair of our design team has resulted in the company being acknowledged as highly innovative and successful in a truly competitive market. In addition to our design capability, we have a reputation for providing design and build solutions on time and on budget, thus providing our customers with high levels of confidence and peace of mind that are essential in the spa industry. With our vast knowledge and experience you will receive a complete engineering package covering all the aspects of the showers and water features including all associated plant rooms. We can offer Concept Design Schematic Design Detailed & Design Development Construction & Tender Site Supervision

CHILLED SHOWER

FF&E AND OSE CATALOGUE



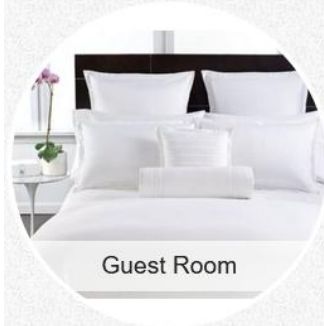
Spa & Wellness



Food & Beverage



Retail



Guest Room



Wellart



Wellcraft



Wellbuild



Housekeeping



AV

SPA FURNITURE & EQUIPMENTS



AYURVEDA EQUIPMENTS



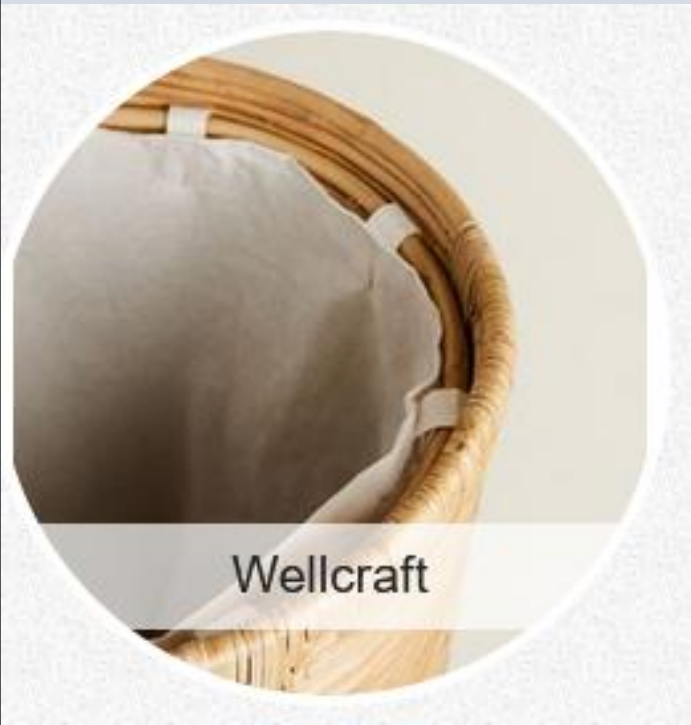
TRENDELBURG / REVERSE TRENDELBURG MOVEMENTS

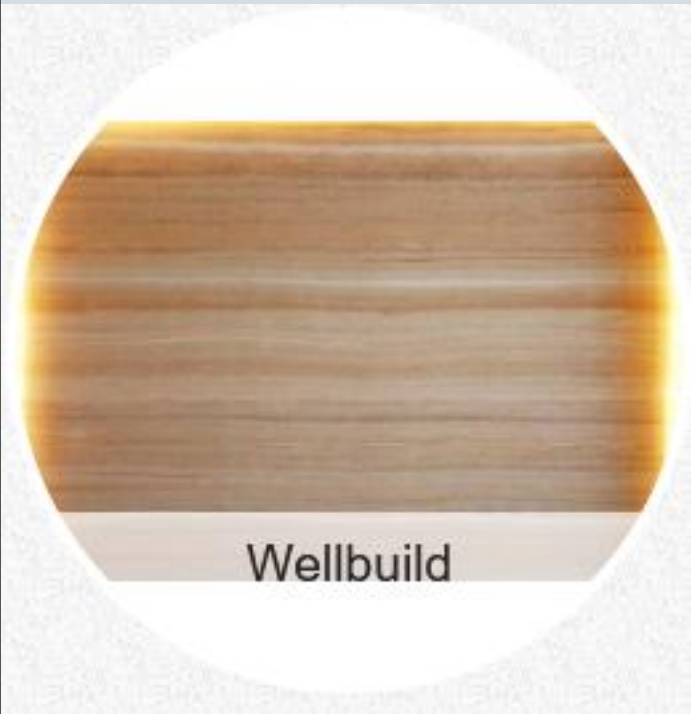


PREMIUM SALON FURNITURE & EQUIPMENTS

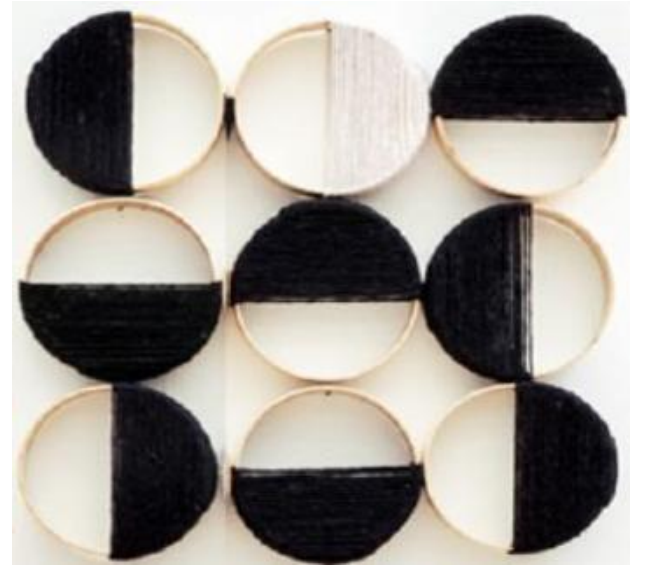


Spa & Wellness









www.dreamzspa.com



DREAMZ INTERNATIONAL
Consider It Done.