

# CHAIN DESIGN

## CATALOGUE

Space is more defined and has added character when a adaptable aesthetic element is blended with light that will pose as a show stopper of that space. The Organic Chandelier designs and patterns creates a story and speaks profoundly about the rhythm, patterns and balance when it interacts with light.

RLB + Architects take pride in manufacturing these inspiring Chandelier designs that are tailor made to the project.

# TABLE OF CONTENTS

**01**

## RHYTHM

Rhythmic dynamic play of lights and light elements with repetitions and variations of sizes, shapes and intervals between the design elements in the chandelier makes it more interesting and creates an organized design in space and time and space will become more aesthetically pleasing.

**02**

## UNITY

Unity is the principle of design that unifies all other principles within a piece of work, allowing each individual element to coexist with one another to form an aesthetically pleasing design.

**03**

## EMPHASIS

Emphasis is the part of the design that catches the viewer's attention. Usually the artist will make one area stand out by contrasting it with other areas. The area could be different in size, color, texture, shape, etc.

**04**

## HARMONY

Harmony is accomplished by the repetition of a particular design element, such as color, shape, texture, etc. That harmony is what creates the sense of unity.

**05**

## COLOR PALETTE

Creating a color palette is a possibility to generate different sensations in the perception of space.



# RHYTHM

Rhythmic dynamic play of lights and light elements with repetitions and variations of sizes, shapes and intervals between the design elements in the chandelier makes is more interesting and creates an organized design in space and time and space will become more aesthetically pleasing.



Reminiscent of luxury and royalty

Palette

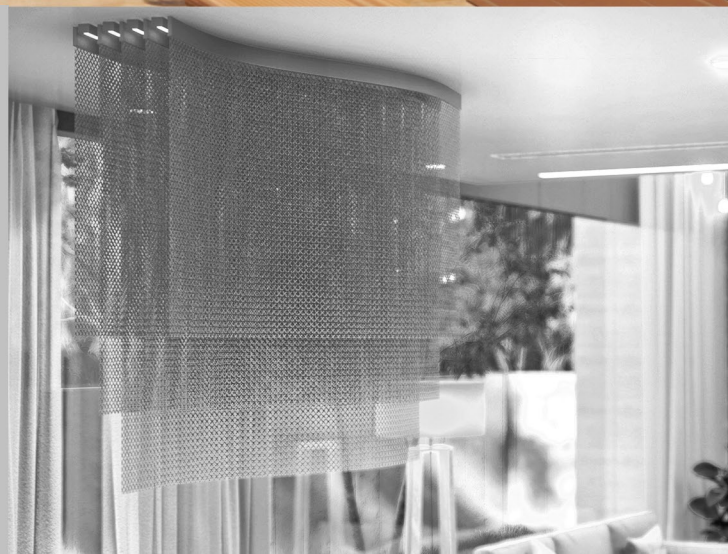


GOLD  
FFD700

R | L | B

DR.ROOPA LAKSHMI BHAT

Hospitality & Healthcare • Design Consulting • Project Management



# UNITY

The chandelier design unifies all design elements in the room and allows every design element to coexist with one another to form an aesthetically pleasing design.



**TURQUOISE  
BLUE**  
30D5C8



**EMERALD  
GREEN**  
50C878



**GOLD**  
FFD700



**R | L | B**

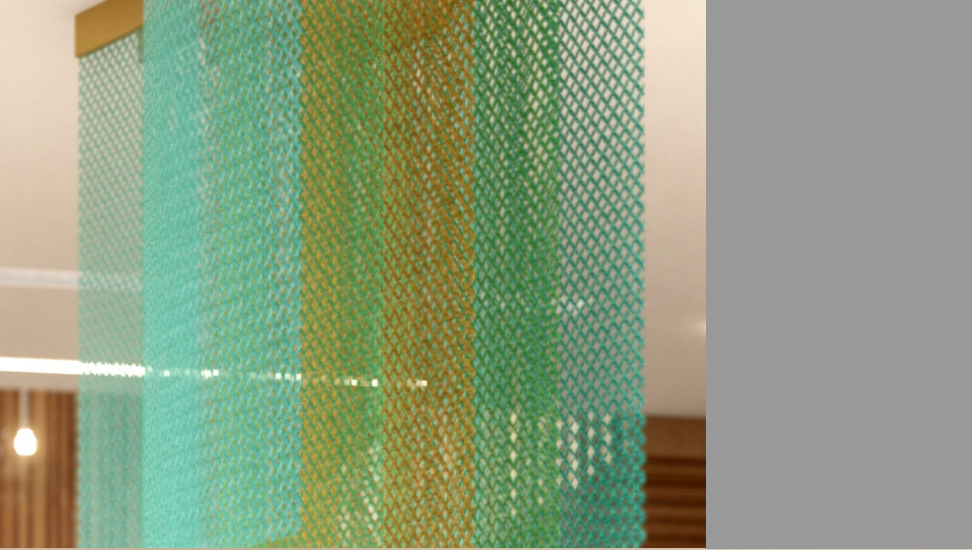
DR. ROOPA LAKSHMI BHAT

Hospitality & Healthcare • Design Consulting • Project Management

R | L | B

DR. ROOPA LAKSHMI BHAT

Hospitality & Healthcare • Design Consulting • Project Management



## COLOR GRADIENT

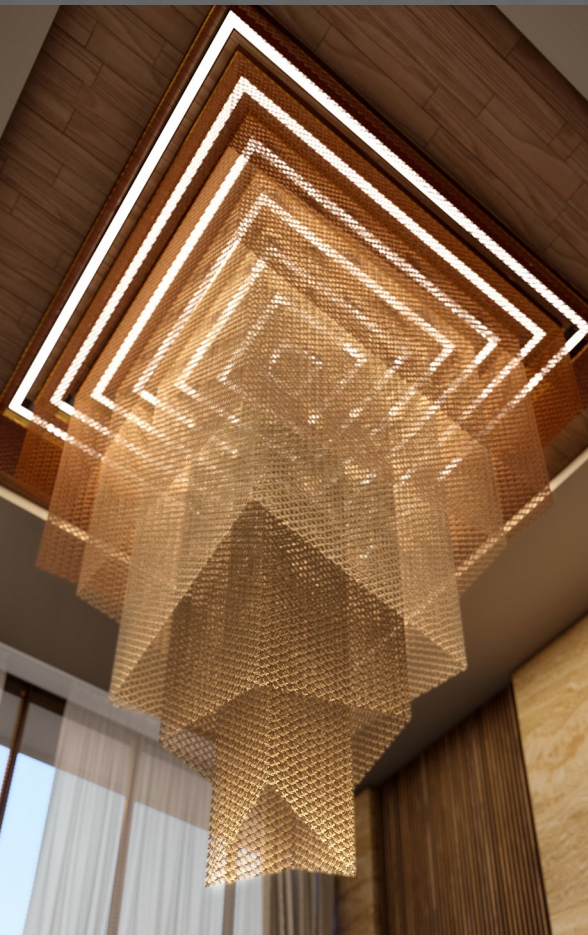
By modulating the magnitude of the size or the intensity of the light or color becomes experiential moment causing mental balance and comfort or excitement. It allows the chandelier to stand out by adding a new dimension to the space.

# EMPHASIS

The chandelier and its composition becomes the focal point of the space and helps in steering the viewer's eyes to one spot. The variation in the composition is emphasized in order to hold the viewer's interest by providing visual "surprises".



Reminiscent of luxury and royalty



## SHADES OF BROWN



2d1509



51331b



82614e



a48a71



b8a68e



ccbba3

R | L | B

DR. ROOPA LAKSHMI BHAT

Hospitality & Healthcare • Design Consulting • Project Management



# COLOR GRADIENT

---

By modulating the magnitude of the size or the intensity of the light or color becomes experiential moment causing mental balance and comfort or excitement. It allows the chandelier to stand out by adding a new dimension to the space.



SHADES OF BLUE



ddded9



c3c7c6



93b0b6



7697a0



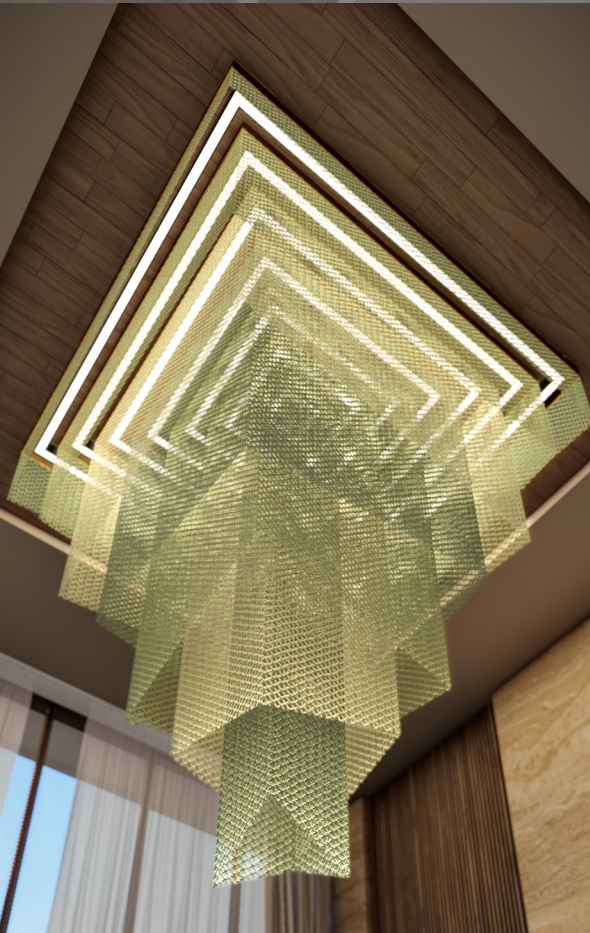
4a7079

R | L | B

DR. ROOPA LAKSHMI BHAT

Hospitality & Healthcare • Design Consulting • Project Management





## SHADES OF GREEN



MOSS  
GREEN  
738054



OLIVE  
GREEN  
a3a86d



LIVEABLE  
GREEN  
e1d5b8

R | L | B

DR. ROOPA LAKSHMI BHAT

Hospitality & Healthcare • Design Consulting • Project Management

# HARMONY

The chandelier design are visually satisfying when there is composition of similar elements and all the elements comes together in a unified way yet they still look alike lending them selves to the whole.



Reminiscent of luxury and royalty



The anodising process brings colour, stability and hardness to the chain links. Customise your project with our extensive colour palette with brilliant and satin finishes. The anodising process brings colour, stability and hardness to the chain links. Customise your project with our extensive colour palette with brilliant and satin finishes.

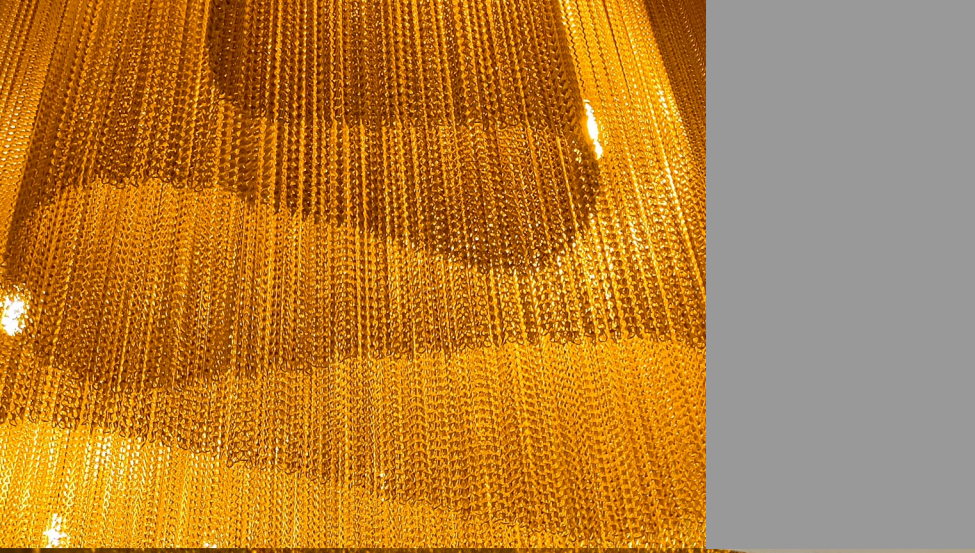


GOLD  
ffd701

R | L | B

DR.ROOPA LAKSHMI BHAT

Hospitality & Healthcare • Design Consulting • Project Management



# COLOR GRADIENT

---

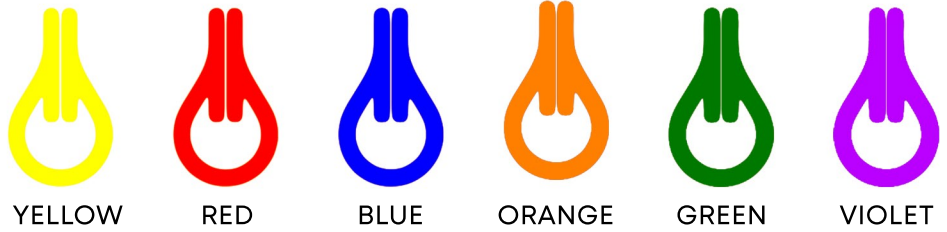
By modulating the magnitude of the size or the intensity of the light or color becomes experiential moment causing mental balance and comfort or excitement. It allows the chandelier to stand out by adding a new dimension to the space.

# COLOR PALETTE

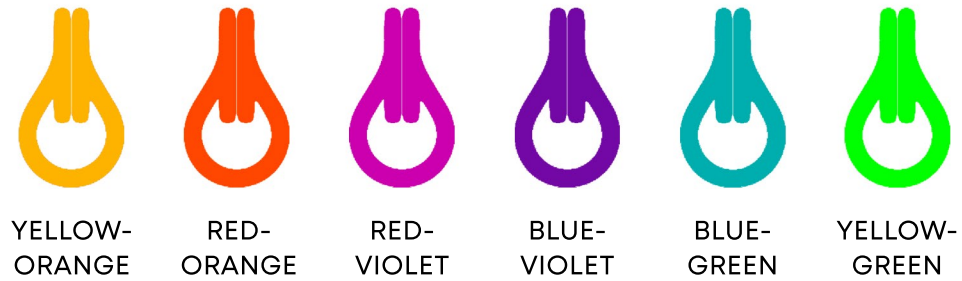
For Prioritizing the user experience and leveraging natural experience we have provided a reference of color scheme to set the mood of the concept of the space. We will recommend the right options and provide tailor made chandelier designs.



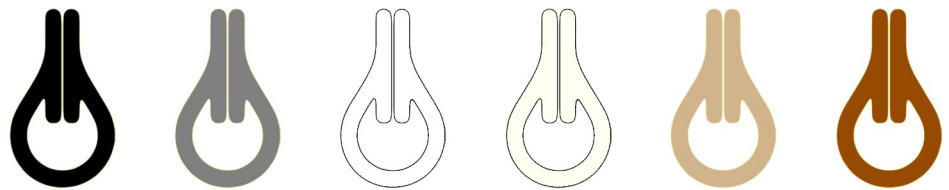
## PRIMARY AND SECONDARY COLORS



## TERTIARY COLORS

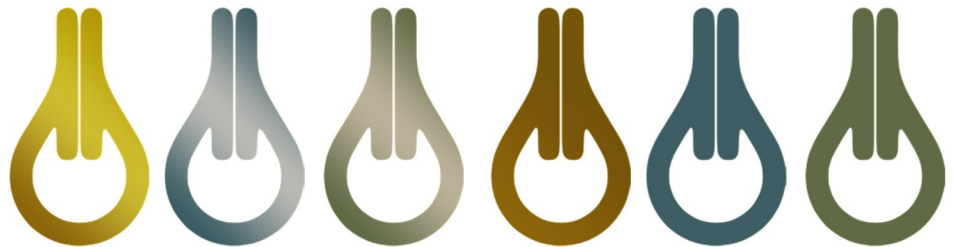


## NEUTRAL COLORS



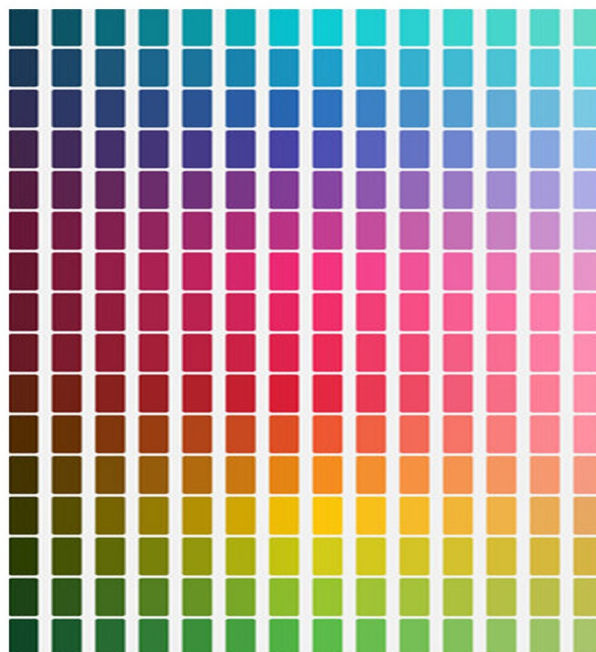
Neutral colors include black, white, gray, tans, and browns. They're commonly combined with brighter accent colors but they can also be used on their own in designs. The meanings and impressions of neutral colors depend more so upon the colors around them.

## FINISHES



METALLIC FINISHES

MATTE FINISHES



Neutral colors include black, white, gray, tans, and browns. They're commonly combined with brighter accent colors but they can also be used

---

**WE ENVISAGE**  
**WE DESIGN**  
**WE DELIVER**

---

**R | L | B**

DR.ROOPA LAKSHMI BHAT

Hospitality & Healthcare • Design Consulting • Project Management

34, LAKESIDE RD, VIDYA NAGAR, T.  
DASARAHALLI, BENGALURU,

**+91 96113 02802**

**[dreamzspa.com](http://dreamzspa.com)**

