

Three Sisters

Wolf Theatre

Production Team

Director:
Scenic Designer: Stephanie Bernadini
Lighting Designer:
Sound Designer:
Costume Designer:
Prop Designer:

Drawn By: Stephanie Bernadini

Submittals

1) Date	Description
2)	
3)	
4)	
5)	

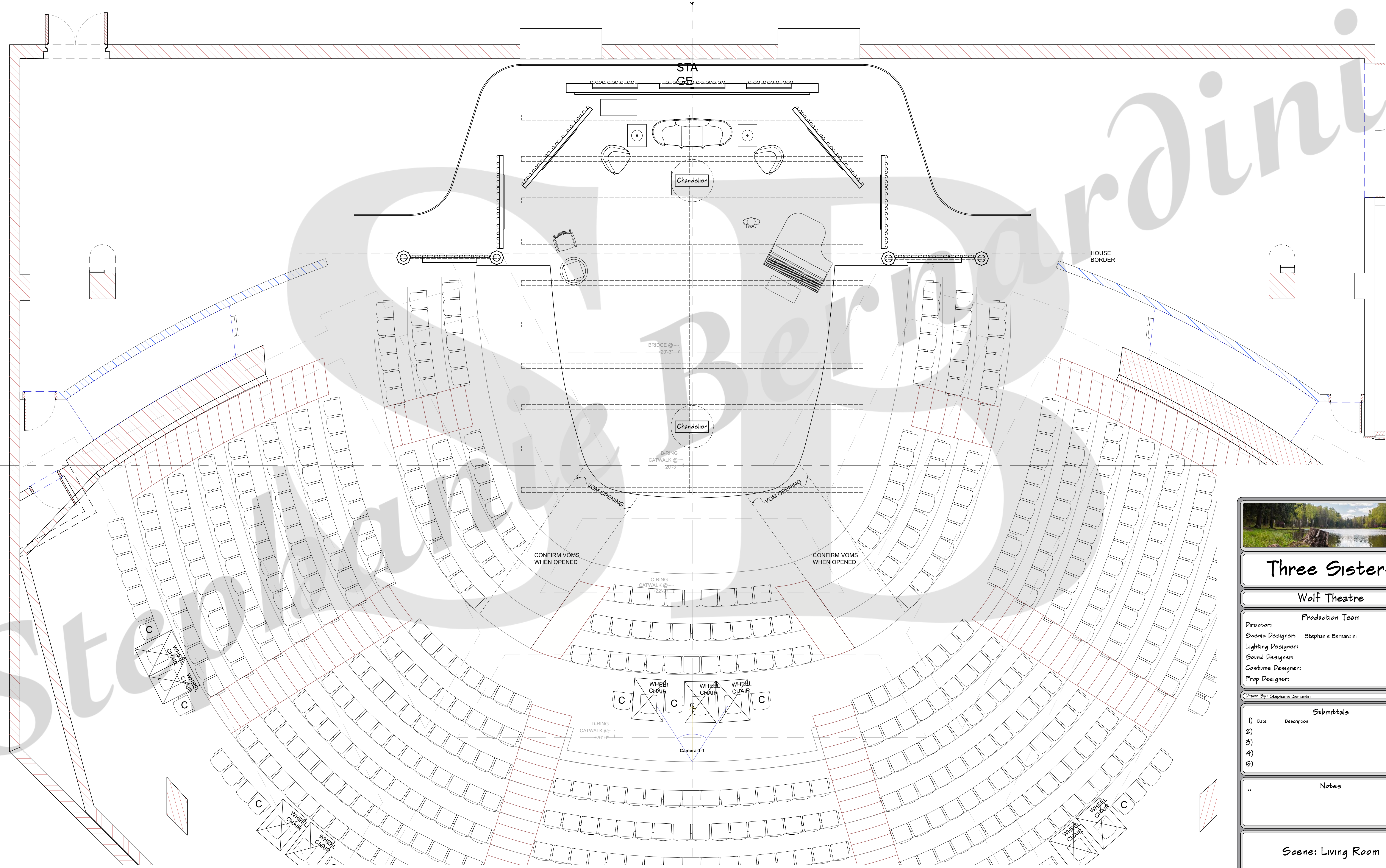
Notes

..

Master Groundplan

Scale: 1:48
Date: 02.27.2022

PLATE
1 of 21



Three Sisters

Wolf Theatre

Production Team

Director:
Scenic Designer: Stephanie Bernardini
Lighting Designer:
Sound Designer:
Costume Designer:
Prop Designer:

Drawn By: Stephanie Bernardini

Submittals

1) Date Description
2)
3)
4)
5)

Notes

..

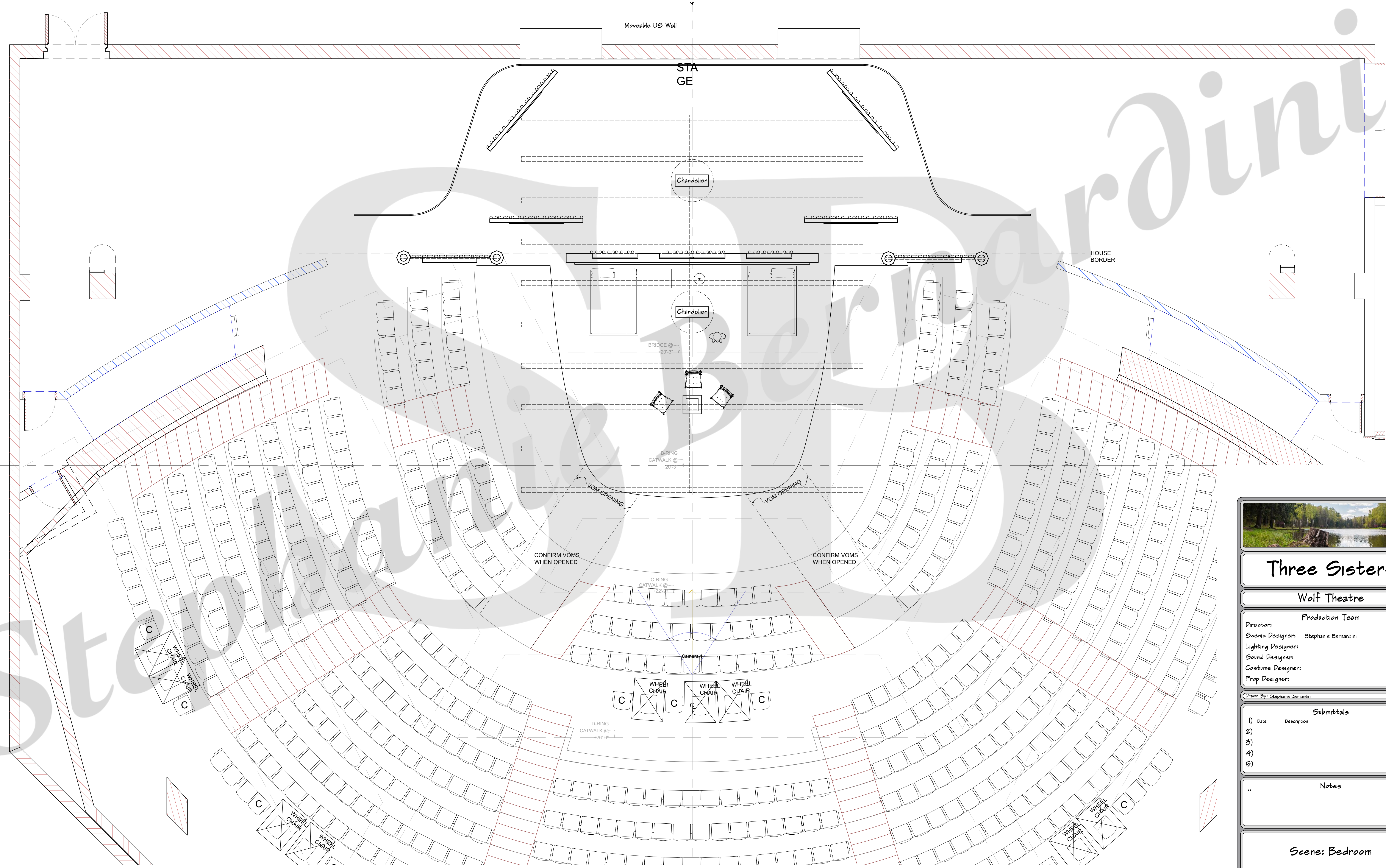
Scene: Living Room

Scale: 1:48

Date: 02.27.2022

PLATE

2 of 21



Three Sisters

Wolf Theatre

Production Team

Director:
Scenic Designer: Stephanie Bernadini
Lighting Designer:
Sound Designer:
Costume Designer:
Prop Designer:

Drawn By: Stephanie Bernadini

Submittals

1) Date Description
2)
3)
4)
5)

Notes

Scene: Bedroom

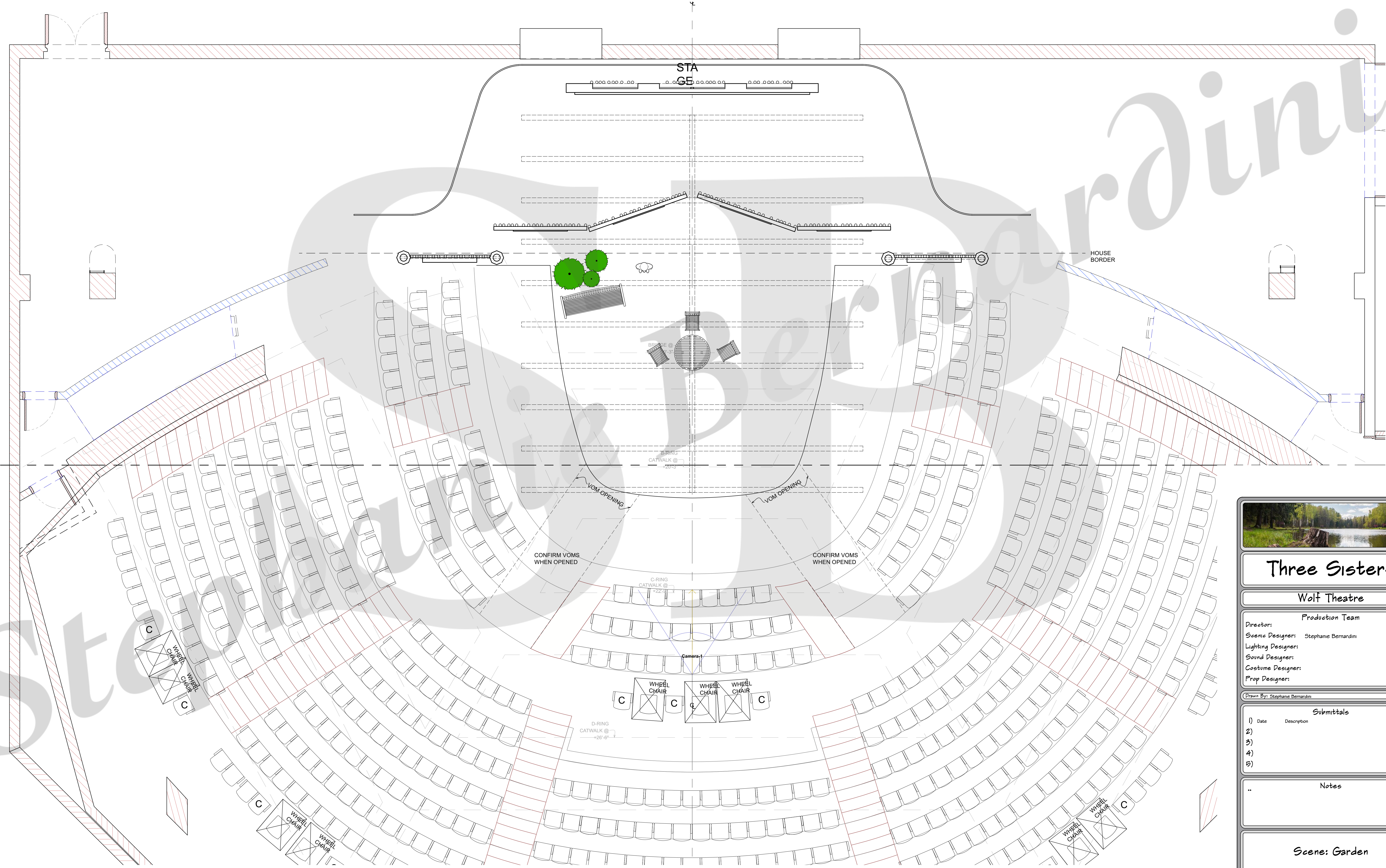
Scale: 1:48

Date: 02.27.2022

PLATE

3

of 21



Three Sisters

Wolf Theatre

Production Team

Director:
Scenic Designer: Stephanie Bernadini
Lighting Designer:
Sound Designer:
Costume Designer:
Prop Designer:

Drawn By: Stephanie Bernadini

Submittals

1) Date Description
2)
3)
4)
5)

Notes

Scene: Garden

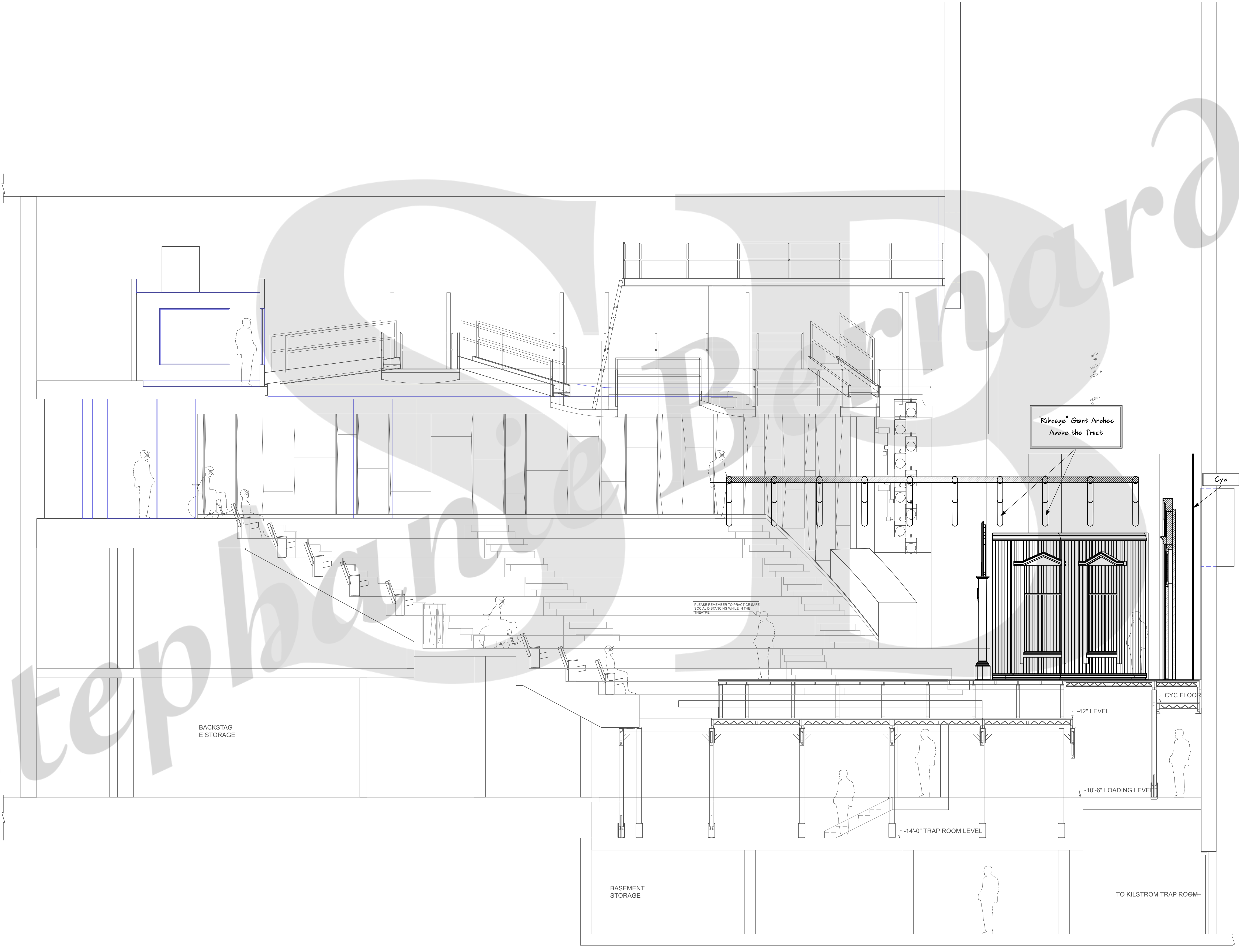
Scale: 1:48

Date: 02.27.2022

PLATE

4

of 21



Three Sisters

Wolf Theatre

Production Team

Director:
Scenic Designer: Stephanie Bernadini
Lighting Designer:
Sound Designer:
Costume Designer:
Prop Designer:

Drawn By: Stephanie Bernadini

Submittals

1) Date Description
2)
3)
4)
5)

Notes

Section

Scale: 1:48

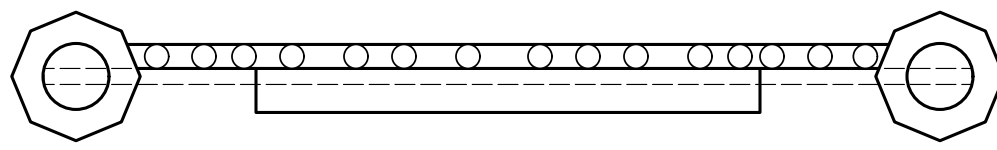
Date: 02.27.2022

PLATE

5

of 21

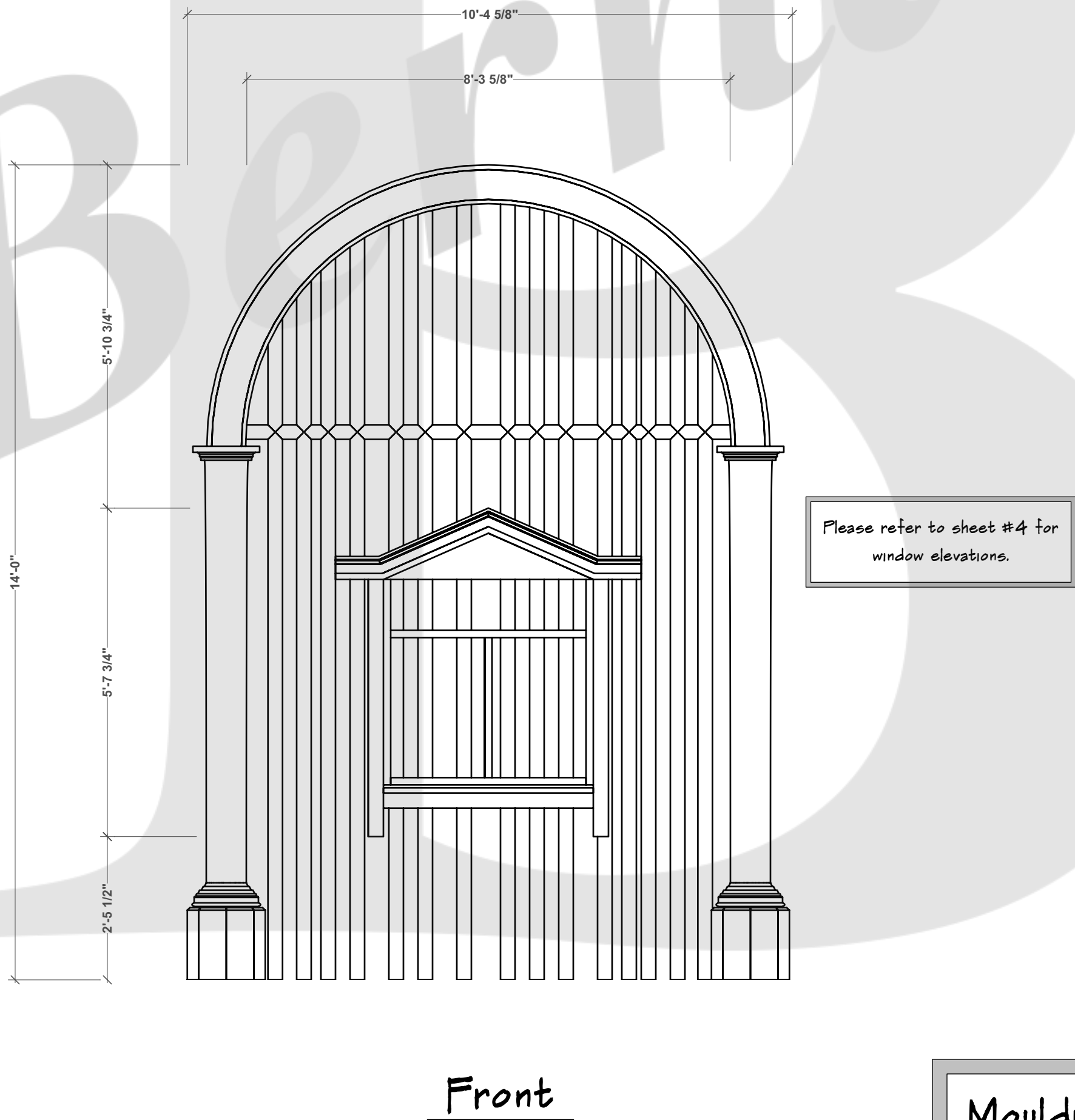
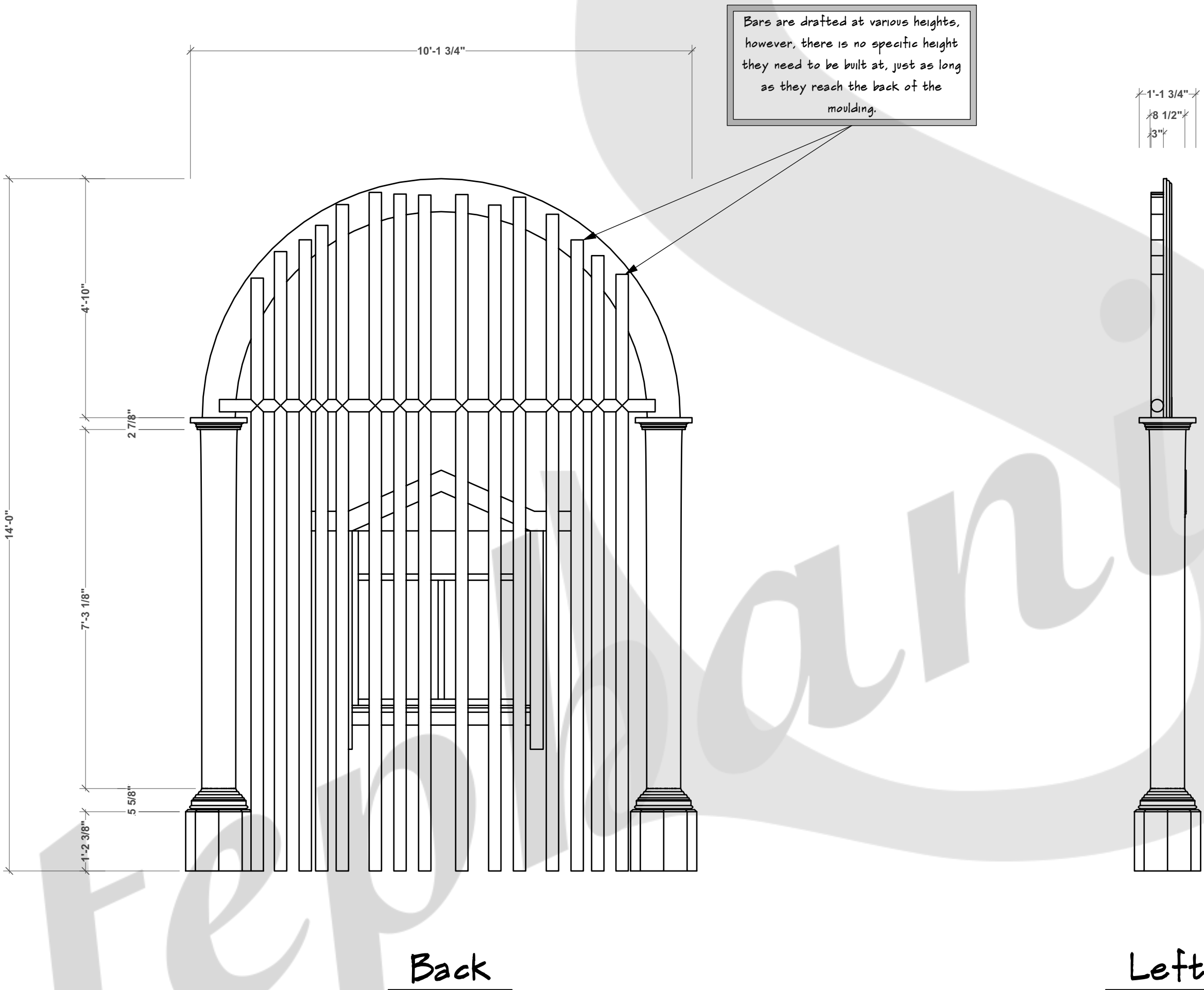
Reverse & Repeat



Pro. Wall Top/Plan Symbol

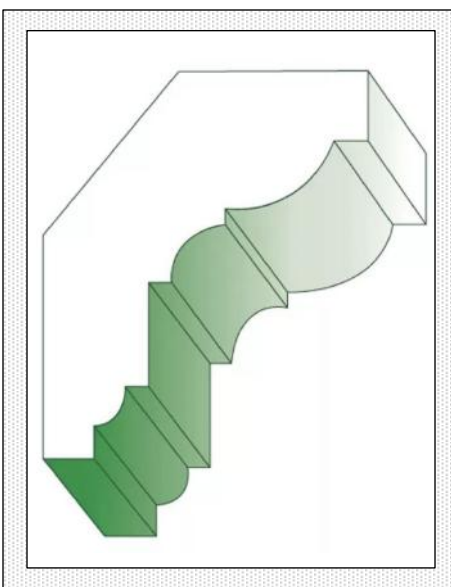


Right Isometric



Moulding Details

Name: 173 Crown
Manufacturer: Dykes Lumber
Size: 1 1/2" x 2 1/4"



Three Sisters

Wolf Theatre

Production Team

Director:
Scenic Designer: Stephanie Bernadini
Lighting Designer:
Sound Designer:
Costume Designer:
Prop Designer:

Drawn By: Stephanie Bernadini

Submittals

1) Date Description
2)
3)
4)
5)

Notes

Pro. Cage Detail Elevations

Scale: 1:24

Date: 02.27.2022

PLATE

6 of 21

1

6

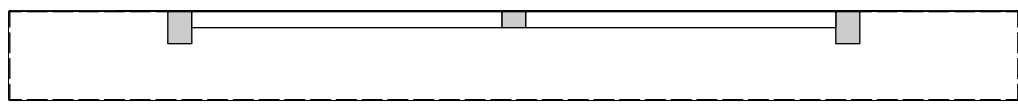
Proscenium Cage Elevations

x2

Scale: 1/2" = 1' 0"

Column Capital Details

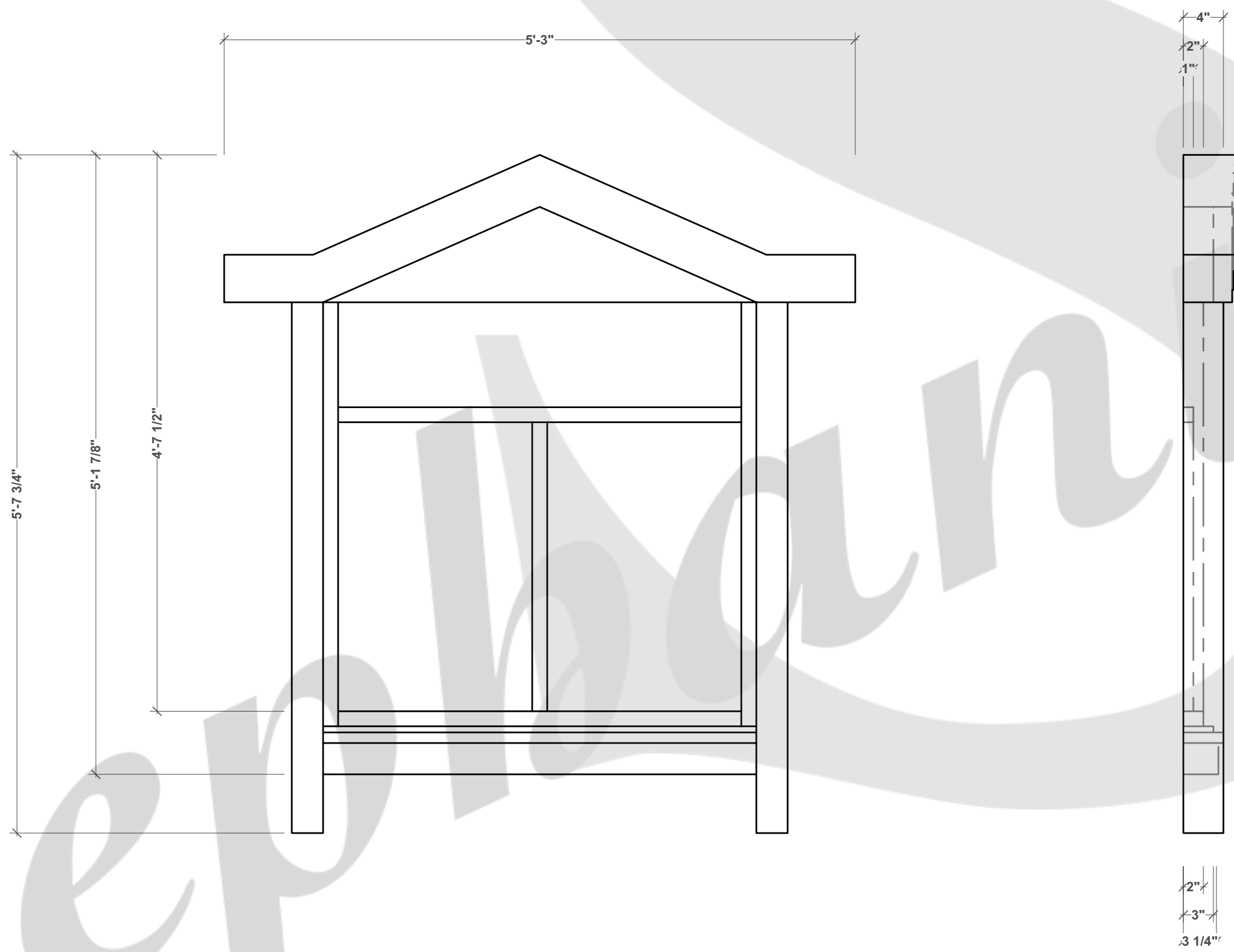
Column Pedestal & Base Details



Pro. Wall Top/Plan Symbol

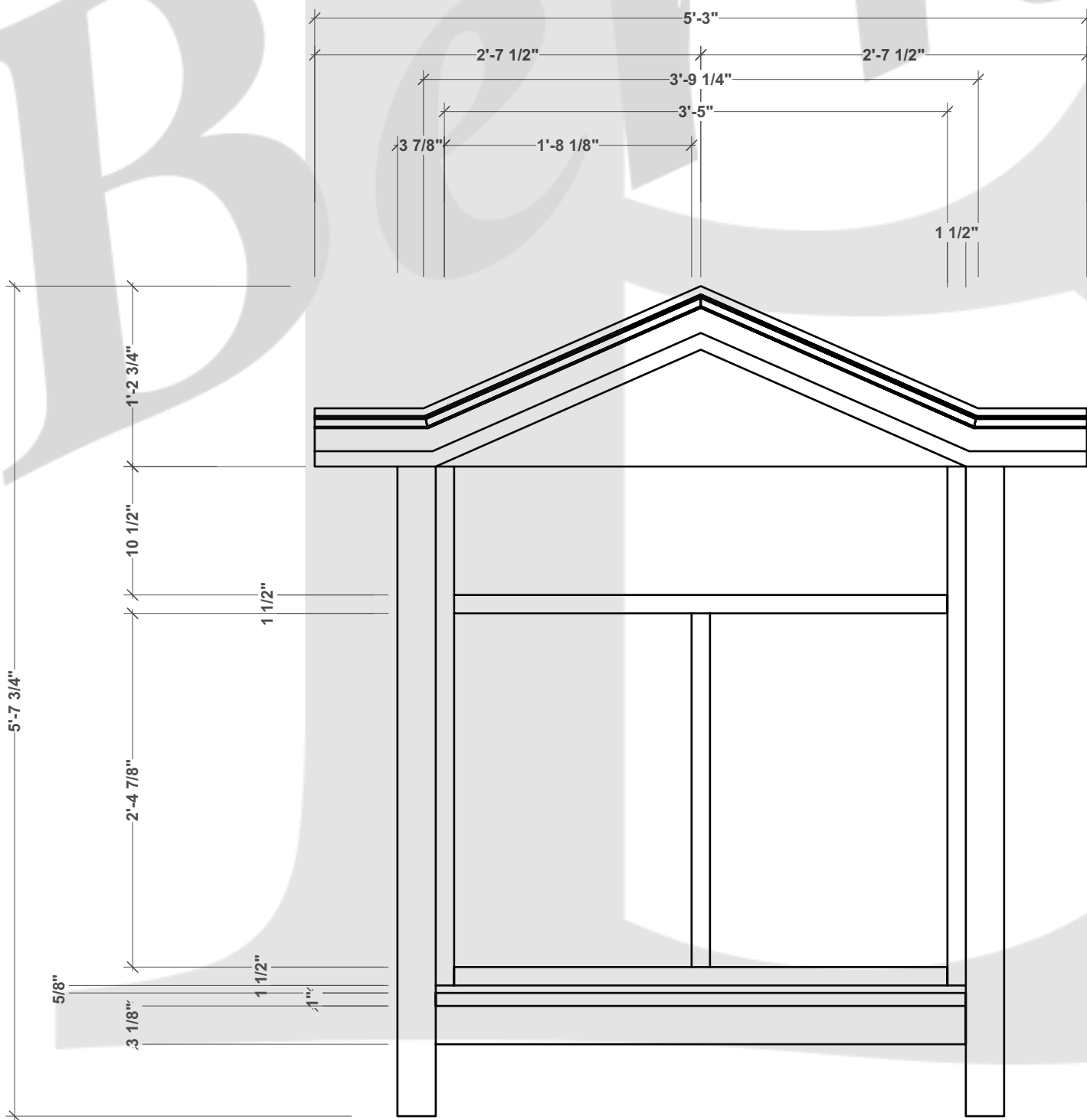


Right Isometric



Back

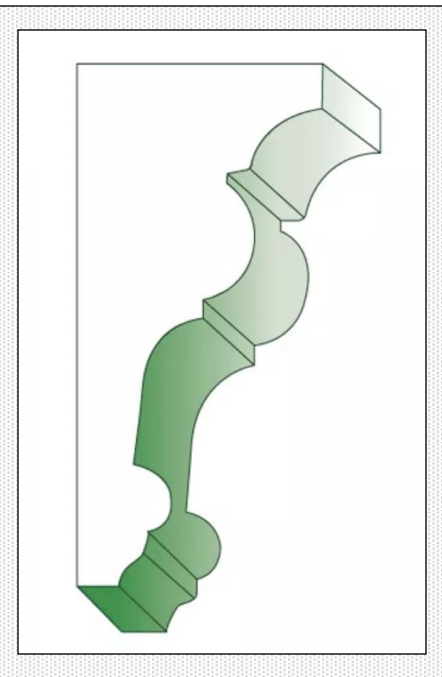
Left



Front

Moulding Details

Names: 132 Solid Crown
Manufacturers: Dykes Lumber
Size: 1-3/4 x 3-3/4



Three Sisters

Wolf Theatre

Production Team

Director:
Scenic Designer: Stephanie Bernardini
Lighting Designer:
Sound Designer:
Costume Designer:
Prop Designer:

Drawn By: Stephanie Bernardini

Submittals

1) Date Description
2)
3)
4)
5)

Notes

..

Pro. Window Detail Elevations

Scale: 1:12

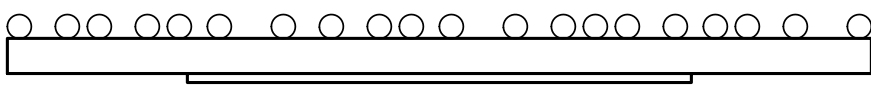
Date: 02.27.2022

PLATE

7

of 21

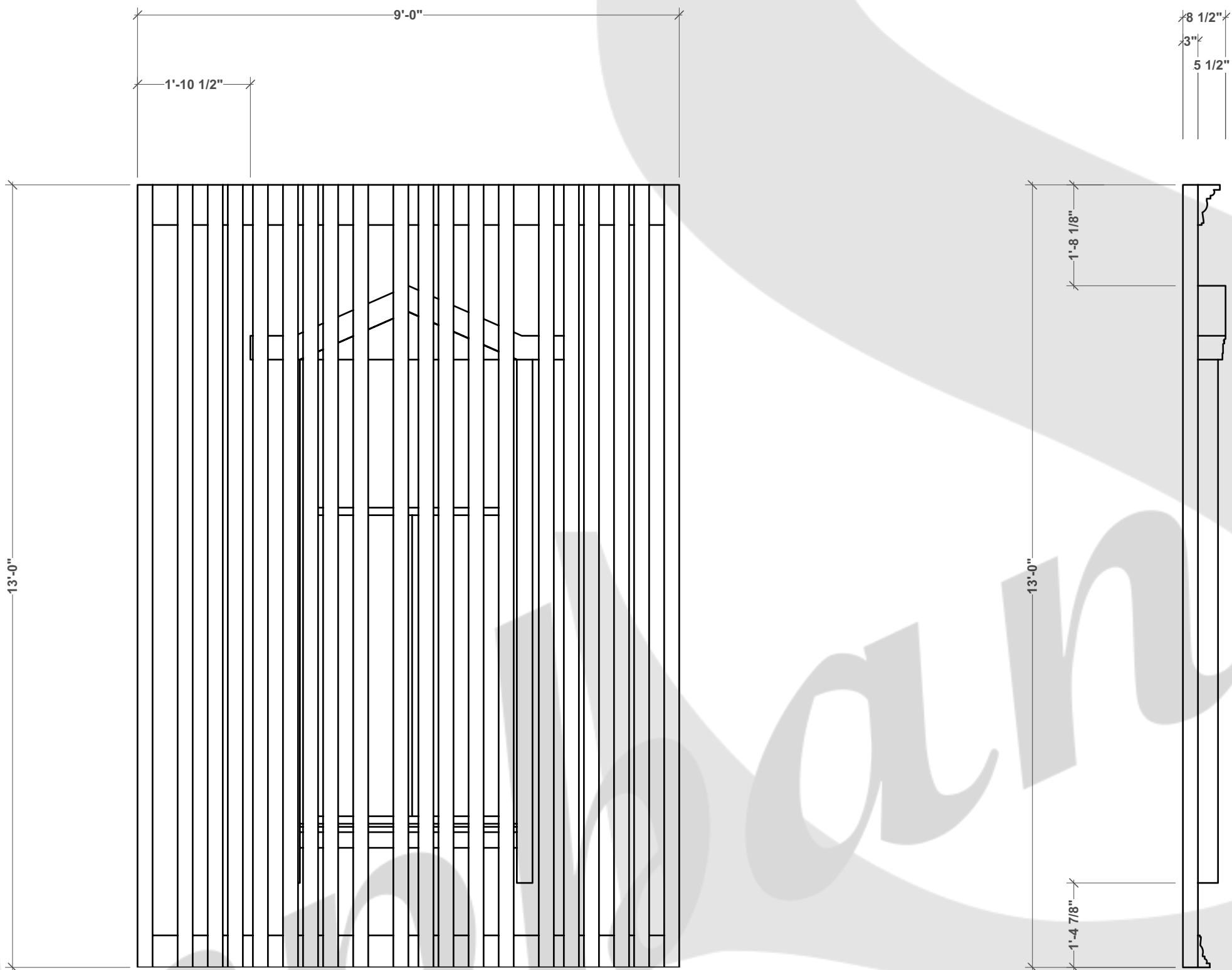
Reverse & Repeat



Pro. Wall Top/Plan Symbol

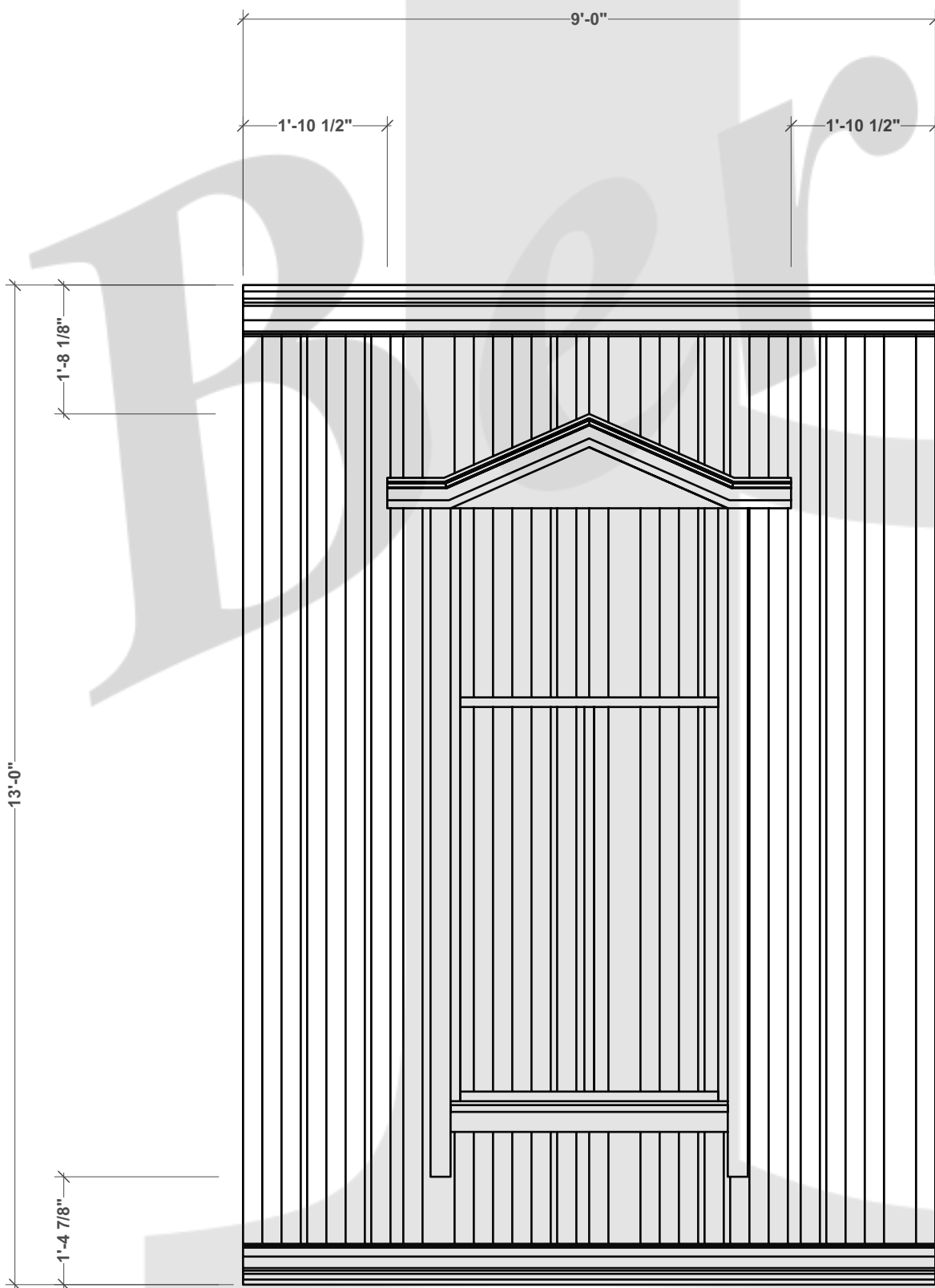


Right Isometric



Back

Left

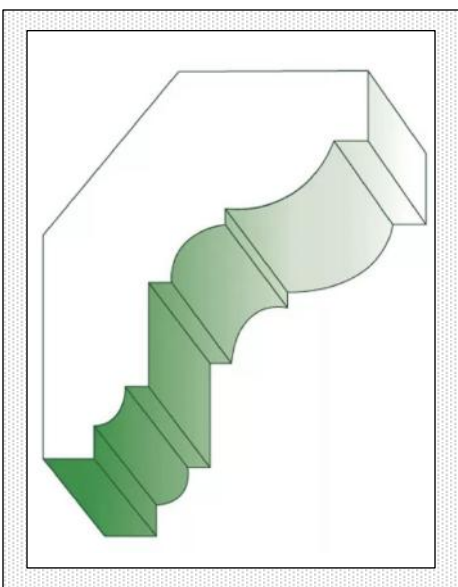


Front

Please refer to sheet #10 for window elevations.

Moulding Details

Name: 173 Crown
Manufacturer: Dykes Lumber
Size: 11/16 x 2-1/4



Three Sisters

Wolf Theatre

Production Team

Director:
Scenic Designer: Stephanie Bernadini
Lighting Designer:
Sound Designer:
Costume Designer:
Prop Designer:

Drawn By: Stephanie Bernadini

Submittals

1) Date Description
2)
3)
4)
5)

Notes

Small Cage Detail Elevations

Scale: 1:24

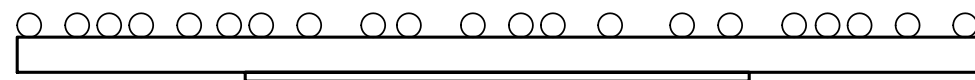
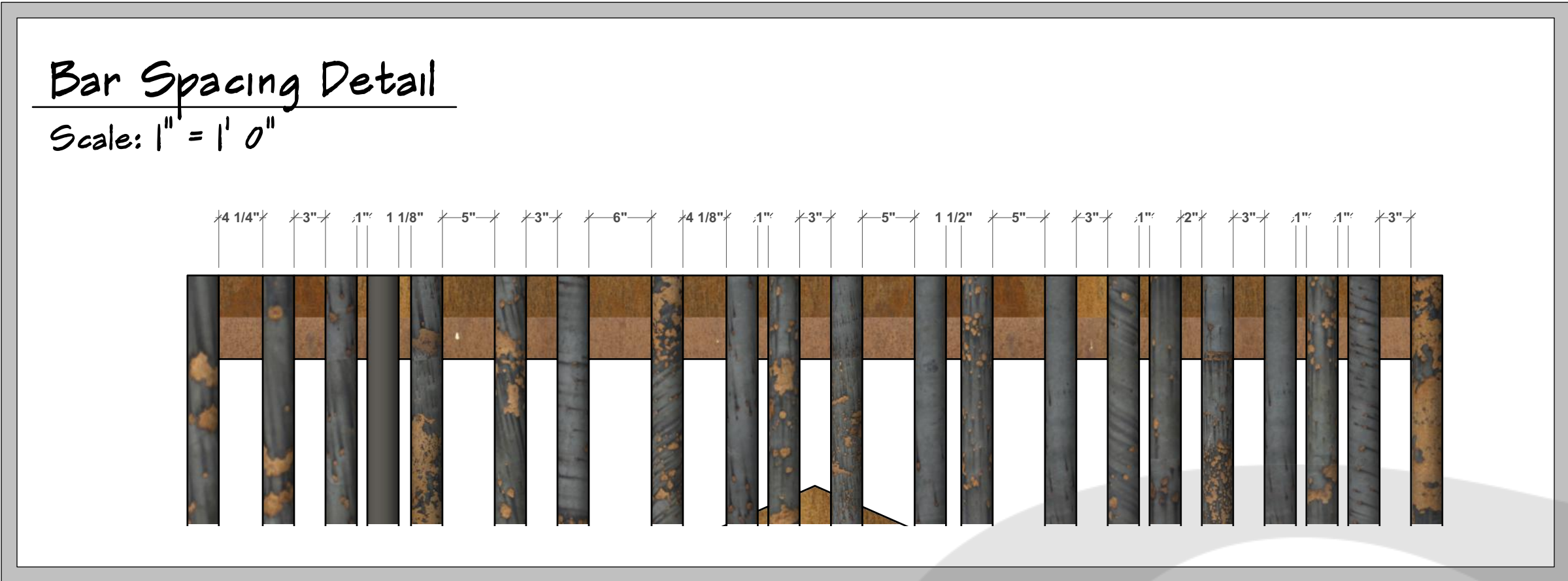
Date: 02.27.2022

PLATE

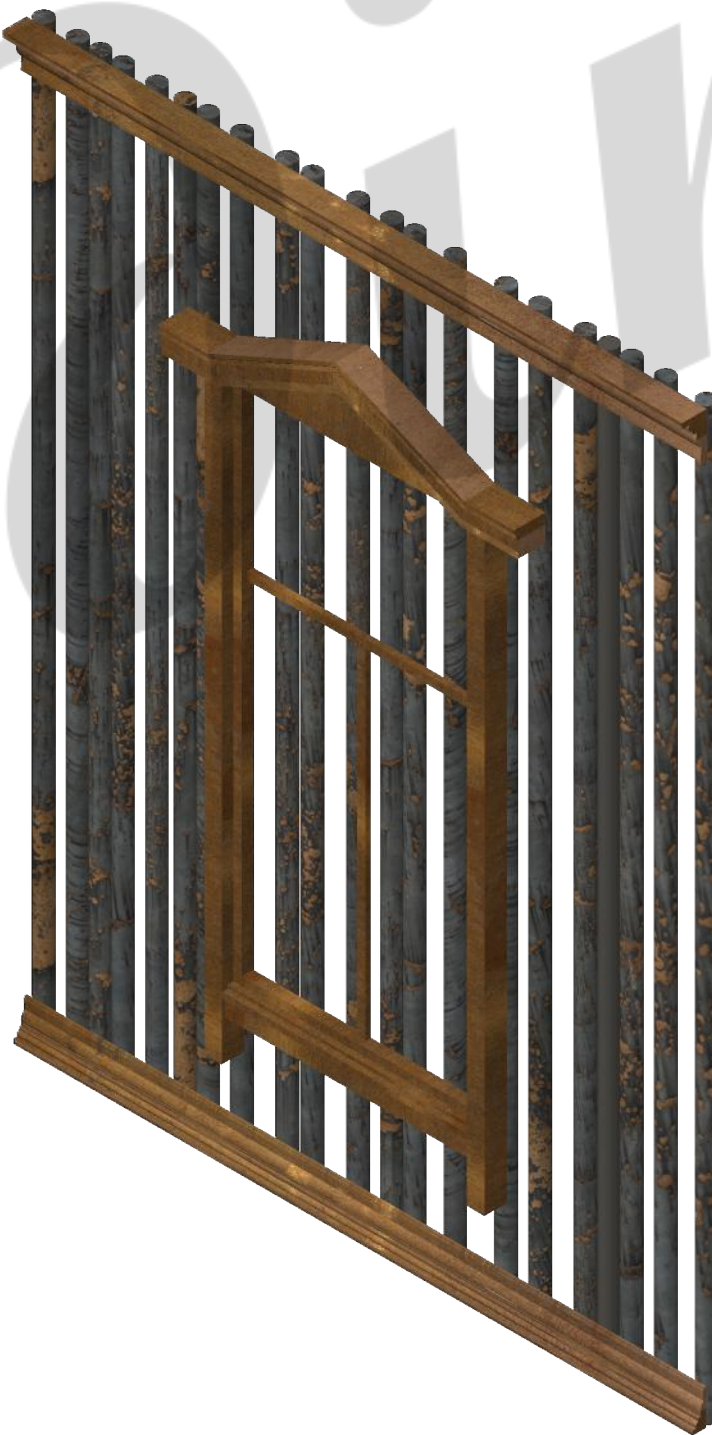
8

of 21

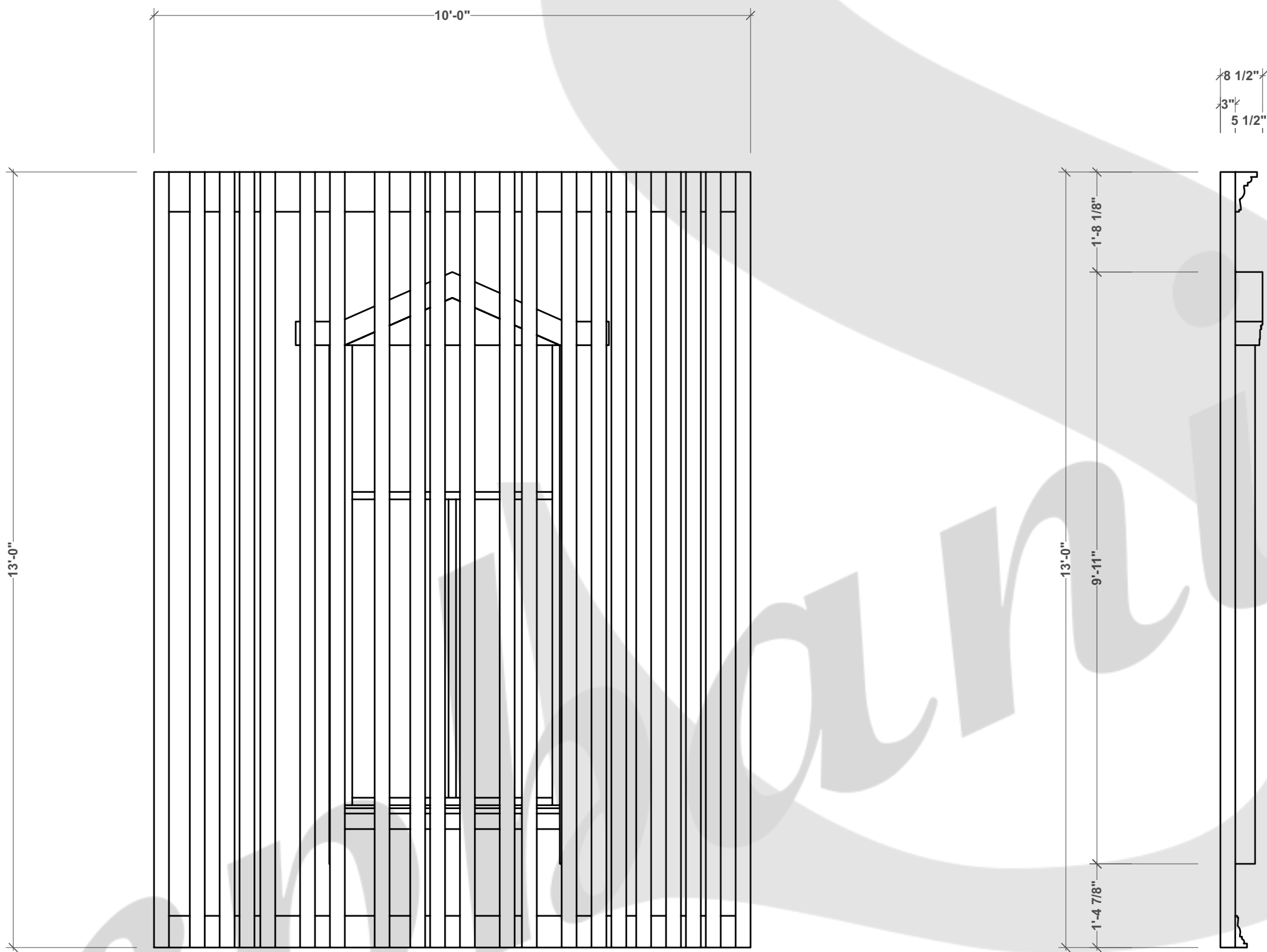
Reverse & Repeat



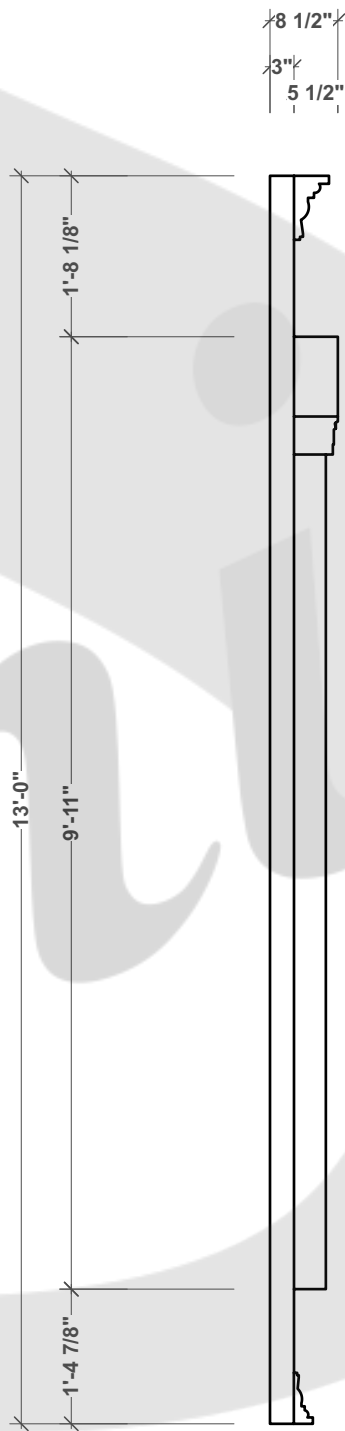
Pro. Wall Top/Plan Symbol



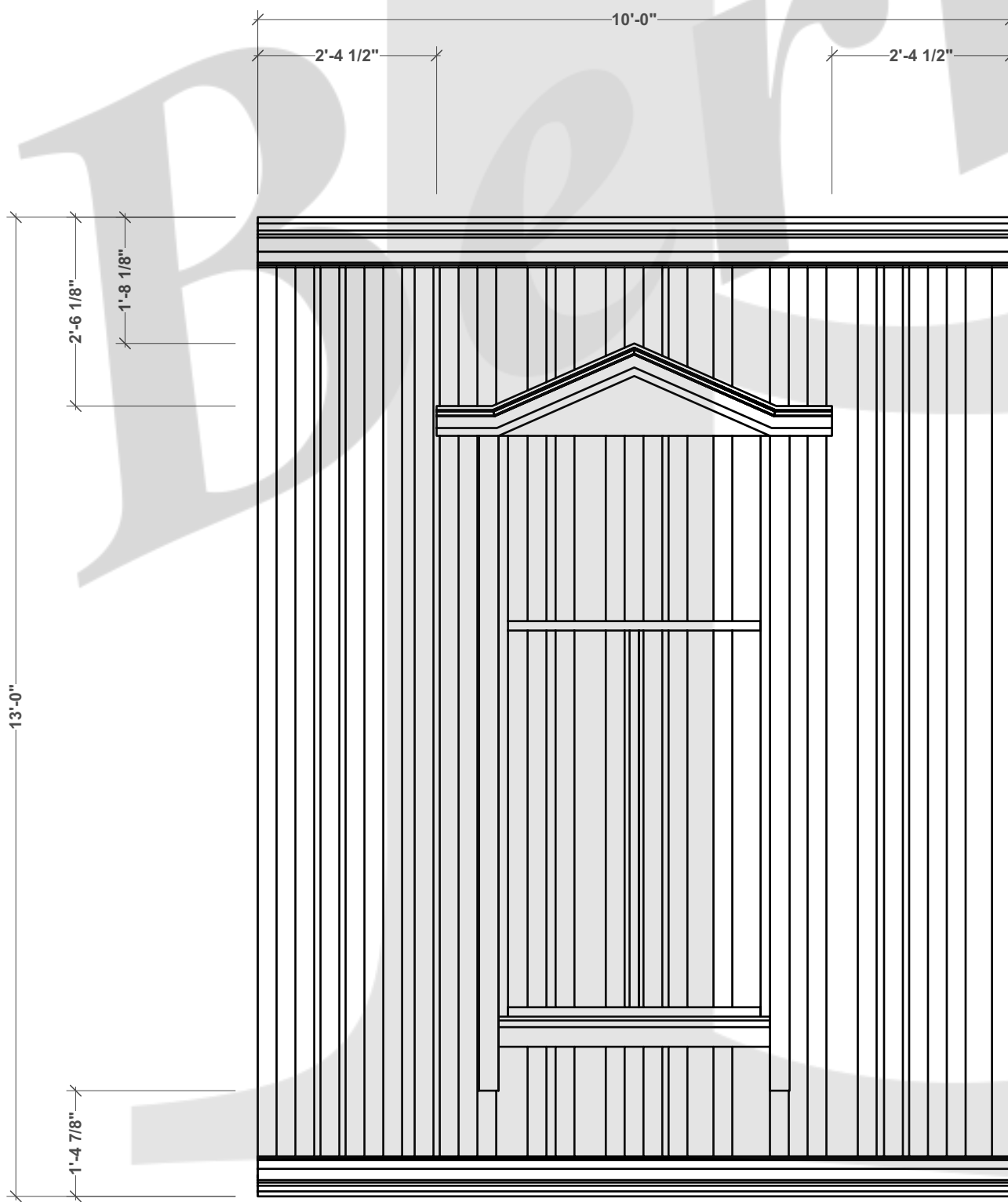
Right Isometric



Back



Left

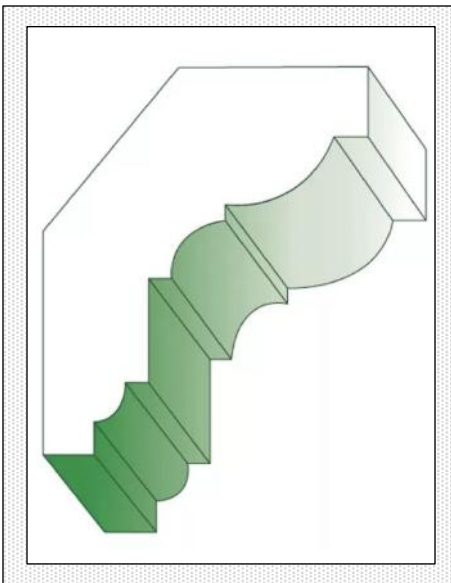


Front

Please refer to sheet #10 for window elevations.

Moulding Details

Name: 173 Crown
Manufacturer: Dykes Lumber
Size: 1 1/16 x 2 1/4



Three Sisters

Wolf Theatre

Production Team

Director:
Scenic Designer: Stephanie Bernardini
Lighting Designer:
Sound Designer:
Costume Designer:
Prop Designer:

Drawn By: Stephanie Bernardini

Submittals

1) Date Description
2)
3)
4)
5)

Notes

Large Cage Detail Elevations

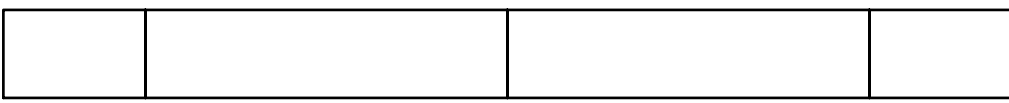
Scale: 1:24

Date: 02.27.2022

PLATE

9

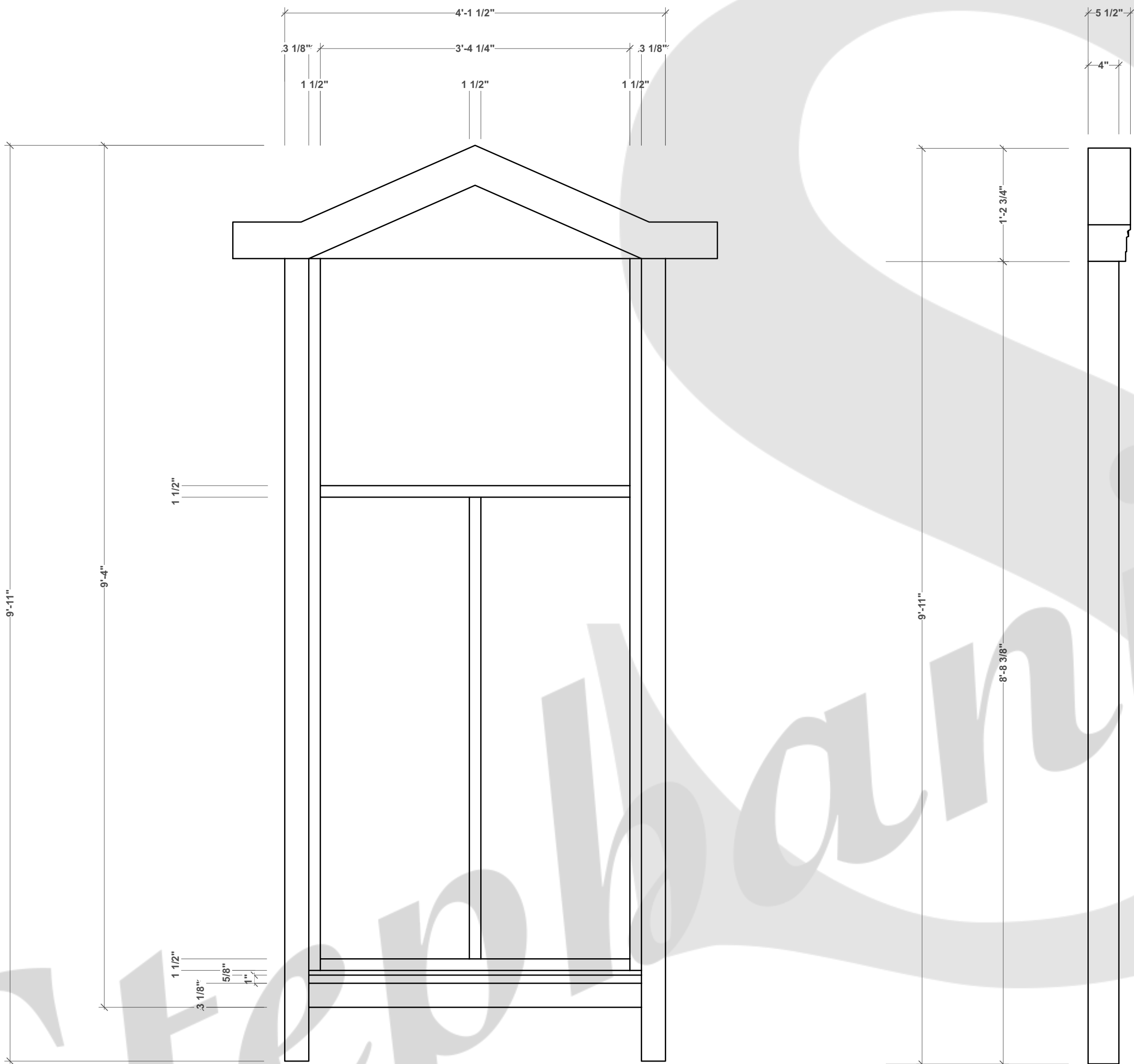
of 21



Pro. Wall Top/Plan Symbol

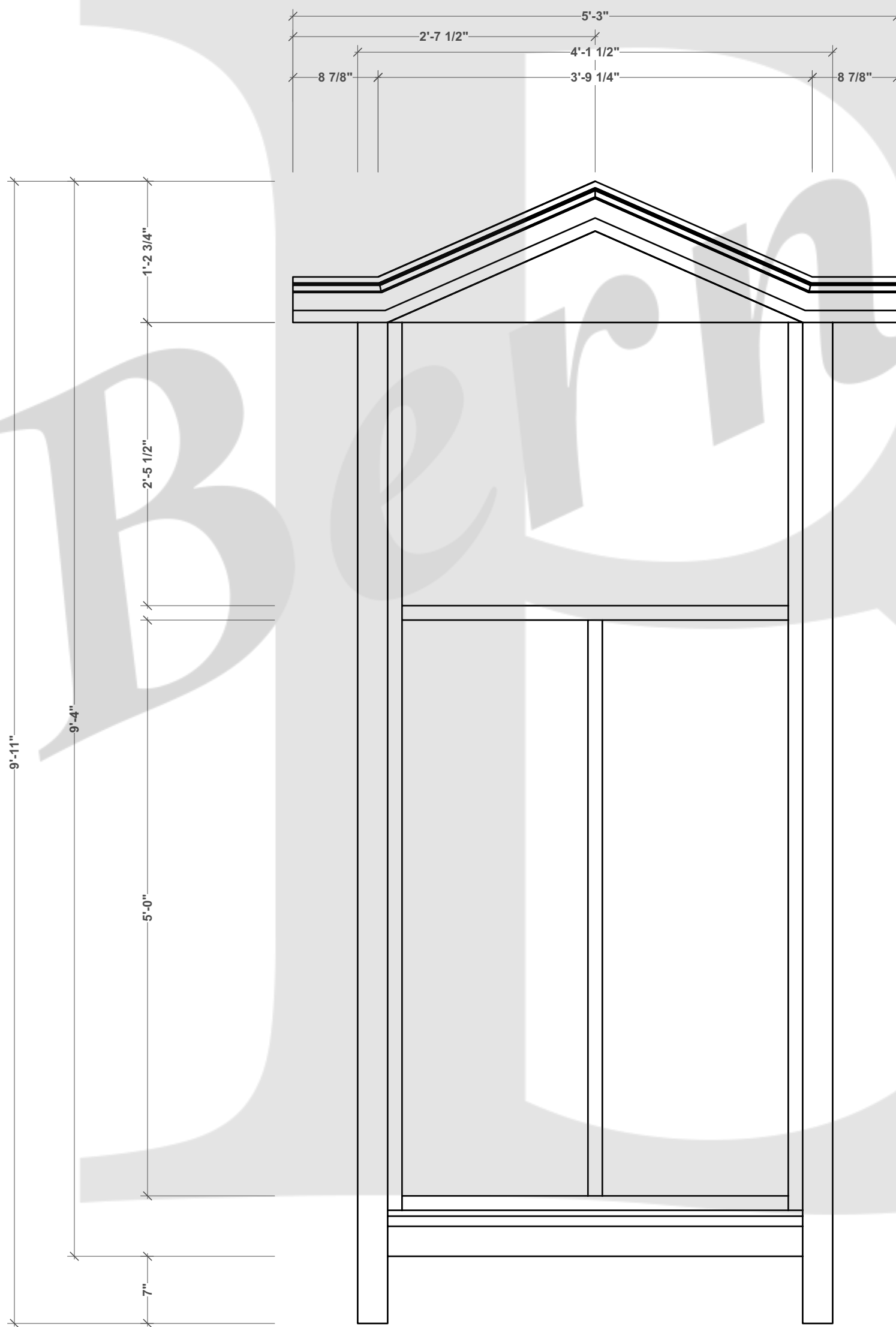


Right Isometric



Back

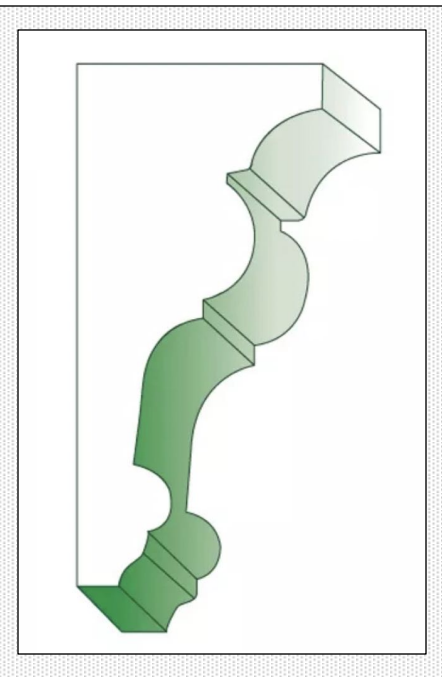
Left



Front

Moulding Details

Names: 132 Solid Crown
Manufacturer: Dykes Lumber
Size: 1-3/4 x 3-3/4



Three Sisters

Wolf Theatre

Production Team

Director:
Scenic Designer: Stephanie Bernadini
Lighting Designer:
Sound Designer:
Costume Designer:
Prop Designer:

Drawn By: Stephanie Bernadini

Submittals

1) Date Description
2)
3)
4)
5)

Notes

..

Cage Window Detail Elevations

Scale: 1:12

Date: 02.27.2022

PLATE

10 of 21

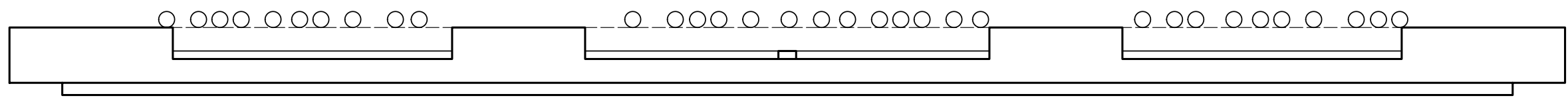
1

10

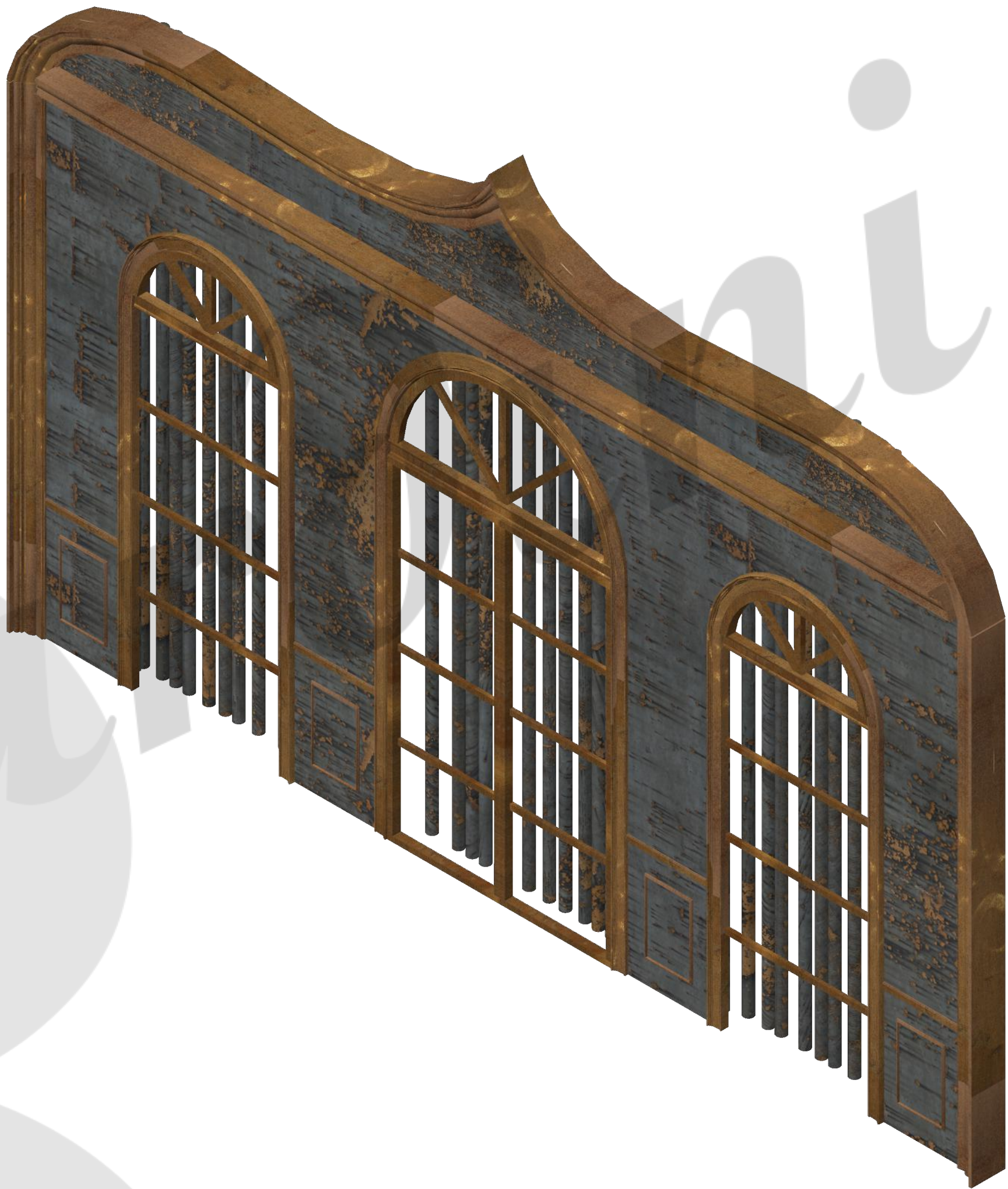
Cage Panel Window Elevation

x4

Scale: 1" = 1'0"



Pro. Wall Top/Plan Symbol



Right Isometric

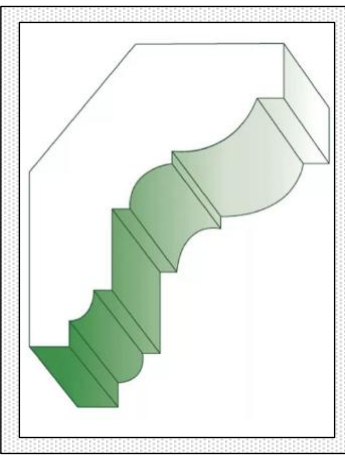


Left

Front

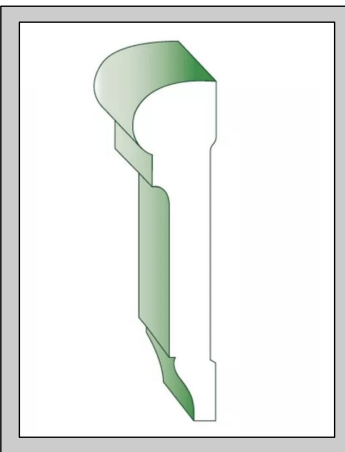
Crown Moulding Details

Name: 173 Crown
Manufacturer: Dykes Lumber
Size: 1 1/16 x 2-1/4



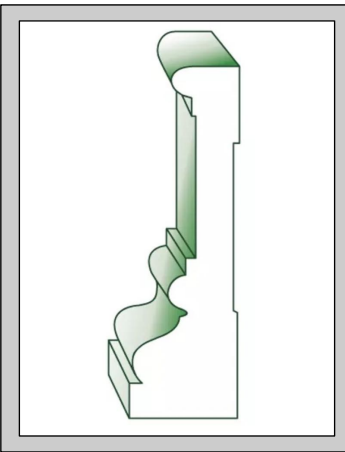
Wainscoting Details

Name: 258 Chair Rail
Manufacturer: Dykes Lumber
Size: 3/4 x 3-1/4



Casing Details

Name: 244 Casing
Manufacturer: Dykes Lumber
Size: 1-1/16 x 3-5/8



Three Sisters

Wolf Theatre

Production Team

Director:
Scenic Designer: Stephanie Bernardini
Lighting Designer:
Sound Designer:
Costume Designer:
Prop Designer:

Drawn By: Stephanie Bernardini

Submittals

1) Date Description
2)
3)
4)
5)

Notes

..

US Wall Detail Elevations

Scale: 1:24

Date: 02.27.2022

PLATE

11 of 21

US Back Wall

4

US Back Wall Elevation

x1

Scale: 1/2" = 1'0"



Smaller Window

Larger Window x1

Repeat : 2 Total

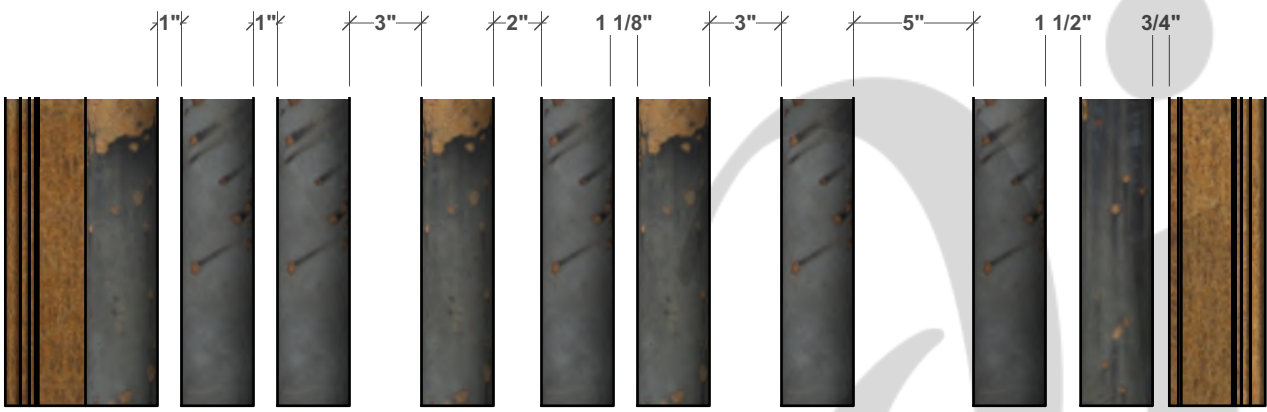
2
12

US Back Wall Window Elevation

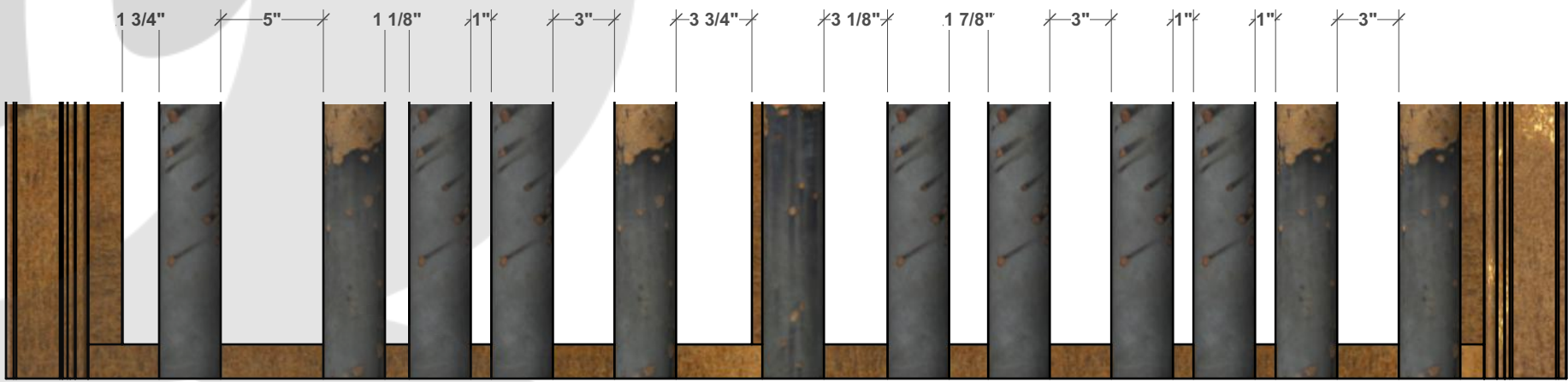
Scale: 1" = 1' 0"

Small Window: Bar Spacing Detail
Scale: 1-1/2" = 1' 0"

Reverse & Repeat

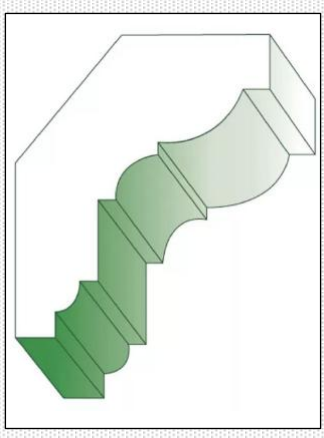


Large Window: Bar Spacing Detail
Scale: 1-1/2" = 1' 0"



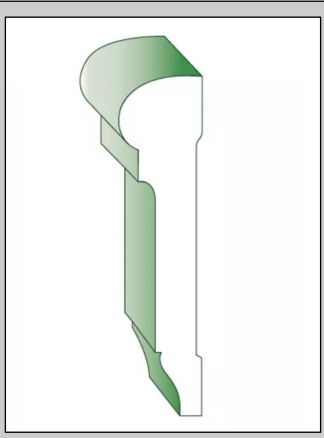
Crown Moulding Details

Name: 173 Crown
Manufacturer: Dykes Lumber
Size: 11/16 x 2-1/4



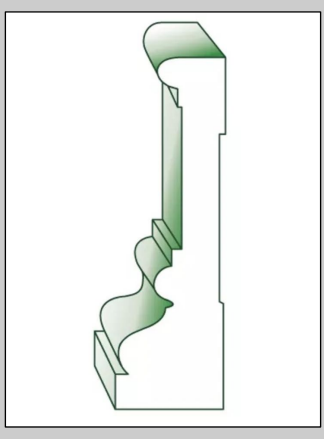
Wainscoting Details

Name: 258 Chair Rail
Manufacturer: Dykes Lumber
Size: 3/4 x 3-1/4



Casing Details

Name: 244 Casing
Manufacturer: Dykes Lumber
Size: 1-1/16 x 3-5/8



Three Sisters

Wolf Theatre

Production Team

Director:
Scenic Designer: Stephanie Bernardini
Lighting Designer:
Sound Designer:
Costume Designer:
Prop Designer:

Drawn By: Stephanie Bernardini

Submittals

1) Date Description
2)
3)
4)
5)

Notes

..

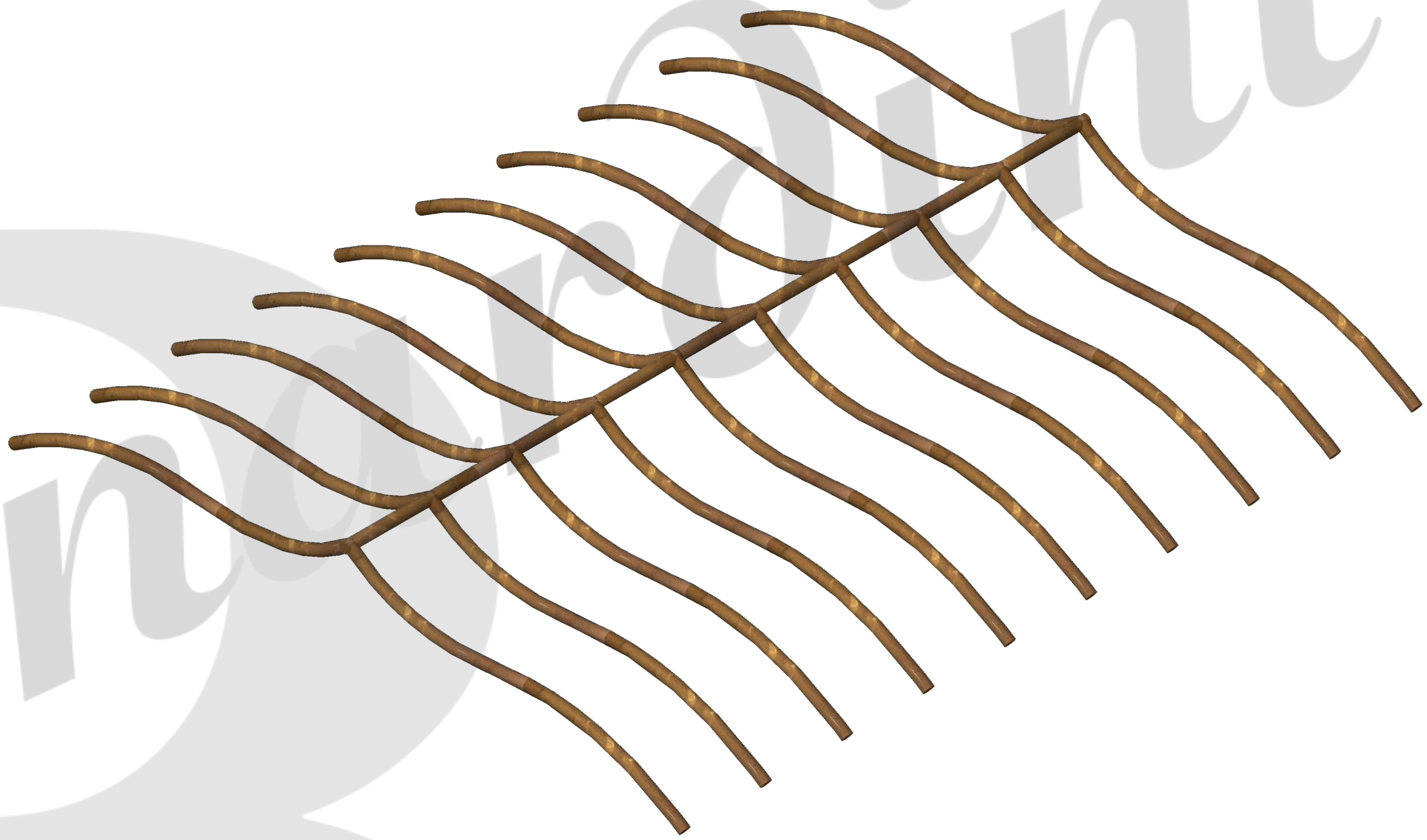
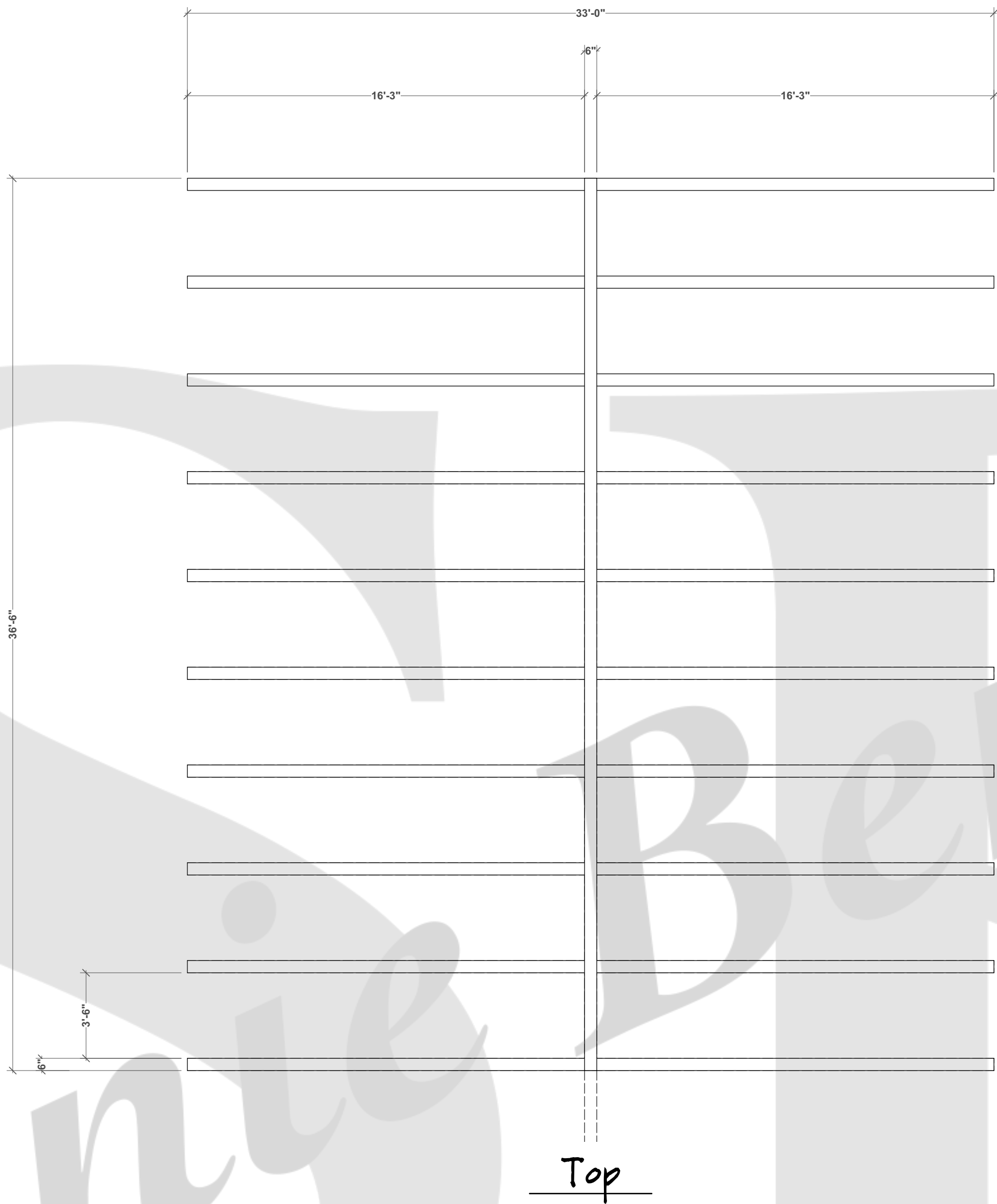
US Wall Window Detail Elevations

Scale: 1:24

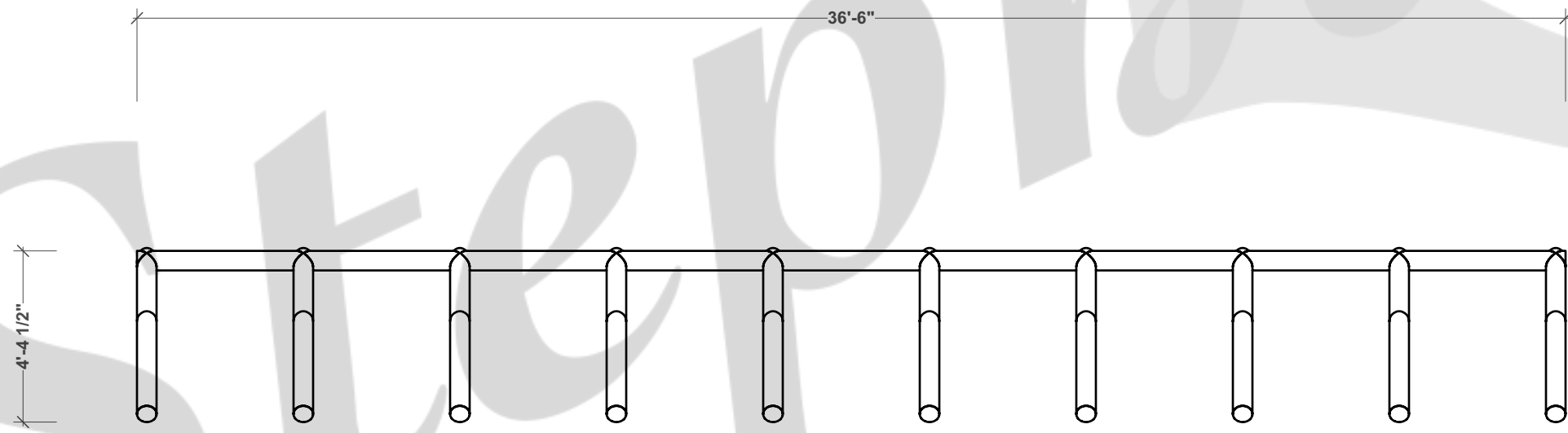
Date: 02.27.2022

PLATE
12 of 21

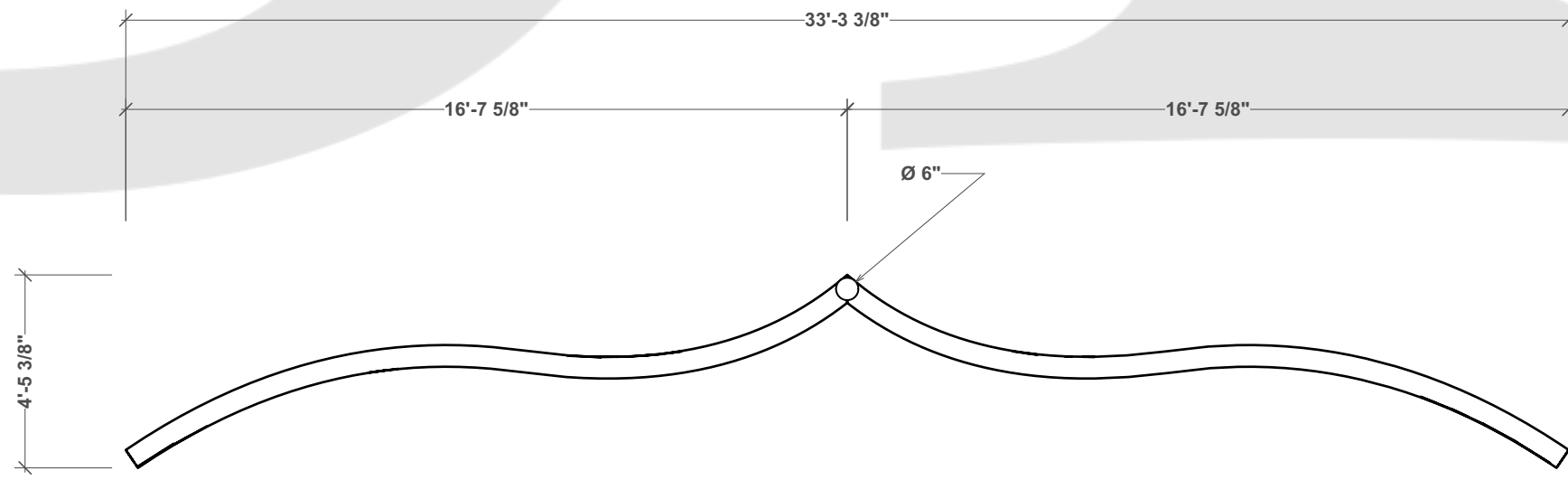
Ribcage Research Images



Right Isometric



Left



Front x10

1

12

Ribcage Elevations

Scale: 1/4" = 1'0"



Three Sisters

Wolf Theatre

Production Team

Director:
Scenic Designer: Stephanie Bernadini
Lighting Designer:
Sound Designer:
Costume Designer:
Prop Designer:

Drawn By: Stephanie Bernadini

Submittals

1) Date Description
2)
3)
4)
5)

Notes

..

Ribcage Detail Elevations

Scale: 1:48

Date: 02.27.2022

PLATE

13

of 21