

WEST RIDGE

SKYLINE HOMES OF McMinnville, OREGON

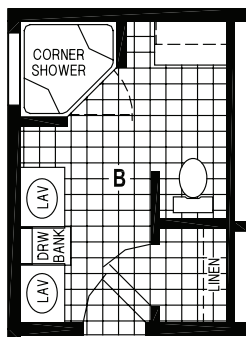
123ICT/5628

1,512 SQ. FT.
4 BEDROOM • 2 BATHS
CATHEDRAL THRU-OUT

OPTION SLIDING GLASS DOOR

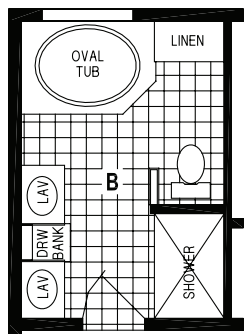
56'-0" *

OPT WINDOW

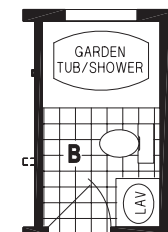
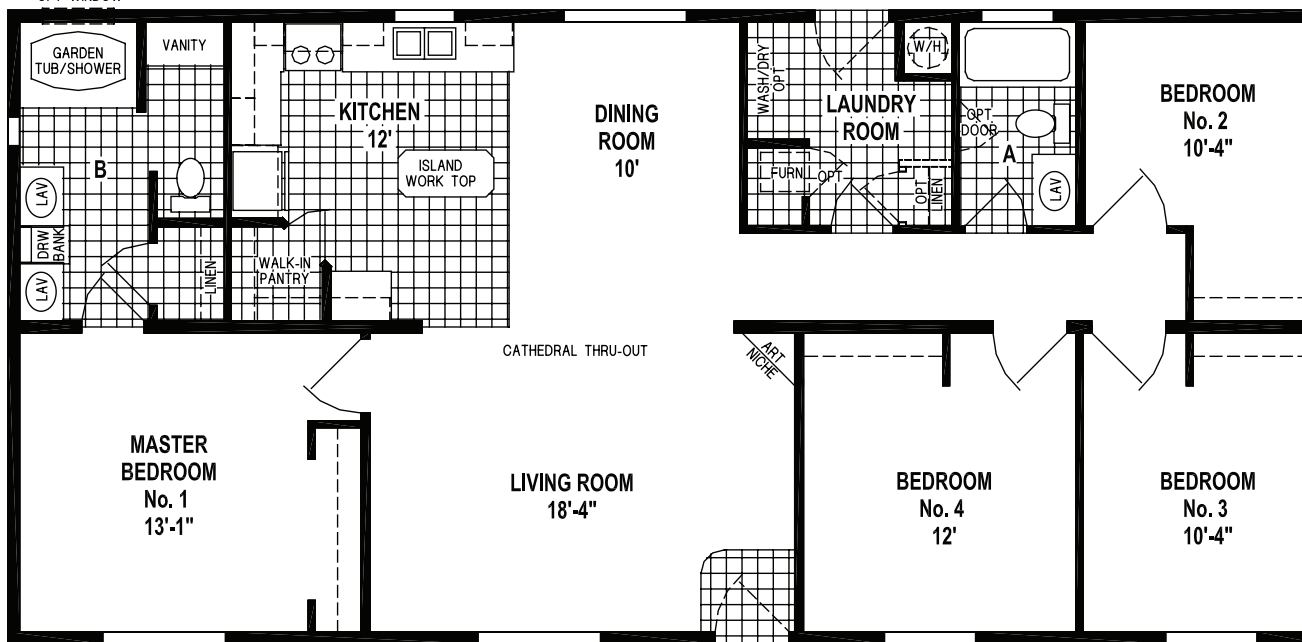


OPTION CORNER SHOWER BATH

27'-0" *



OPTION DELUXE BATH



OPTION GARDEN TUB/SHOWER



SKYLINE
BRINGING AMERICA HOME. BRINGING AMERICA FUN.
WWW.SKYLINEHOMES.COM



WEST RIDGE

SKYLINE HOMES OF McMinnville, OREGON

I23ICT/5628

STANDARD FEATURES

LIVING AREAS

- Choice of (6) Interior Paint Colors
- 52" Ceiling Fan with Light in Living Room
- Wood Cornice Valances on All Windows Except Bathroom
- Metal Mini Blinds
- Shaw Carpet with Rebond Pad
- Decorative Chandelier in Dining Room

KITCHEN

- Choice of (2) Natural Hardwood Cabinets (Butternut or Espresso)
- Lined Overhead Cabinets with Adjustable Shelves
- Fully Extended Drawer System with Ball Bearing Guides
- Residential Hidden Cabinet Door Hinges
- 18 Cu. Ft. Double Door Frost Free Refrigerator
- 30" Deluxe Electric Range with Glass Door, Clock and Timer
- Stainless Steel Sink with Single Lever Faucet and Sprayer
- 6" Ceramic Tile Backsplash
- Plumb for Ice Maker

BATHROOMS

- Choice of (2) Natural Hardwood Cabinets (Butternut or Espresso)
- Natural Hardwood Trimmed Mirrors with (2) Bulb Wall Light
- 60" x 42" Oval Fiberglass Tub/Shower in Master Bath

- 60" Fiberglass Tub/Shower Combo in Hall Bath
- Single Lever Faucet at Lav
- Single Lever Tub/Shower Faucet
- Residential Hidden Cabinet Door Hinges
- Power Vent Fan with Light
- Elongated China Commodes
- China Lavs
- Residential Height Counter Tops

BEDROOMS

- Shaw Carpet with Rebond Pad
- Overhead Lights with Separate Switch
- Double Ventilated Wire Shelving in Closets (where applicable)
- 36" Interior Doors with Lever Handles

ADDITIONAL FEATURES

- Board and Batt Exterior on Front Door Side
- 10' Dormer Centered Above Front Door (per floor plan)
- 30-Year Shingles (Fiberglass – Class A Fire Rated) Choice of Colors
- Vaulted Ceilings Throughout
- Residential Finished Drywall Throughout
- Baseboards Throughout
- 2-Panel Beaded Interior Doors with Lever Handles
- Mortised Hinges Throughout
- Linoleum Floor at Entry
- Electric Forced Air Furnace
- Insulated Fiberglass Heat Ducts
- Perimeter Heating System Throughout with Toe-Kick Registers in Kitchen and Bathrooms

- 40 Gal. Electric Water Heater (Dual Element)
- Whole House Water Shut-off Valve
- Residential PEX Waterlines
- Plumb for Washer; Wire for Dryer
- Wire Shelf over Washer/Dryer Area
- Wire for Freezer (per floor plan)
- 36" 6-Panel In-Swing Fiberglass Front and 9-Lite Rear Door with Deadbolts
- Energy Star Rated Low "E" Vinyl Windows
- Tongue and Groove OSB Decking
- 200 Amp Service Entrance
- 2 x 6 Sidewalls, 16" O.C.
- 2 x 6 Floor Joists, 16" O.C.
- 30# Roof Load
- Exterior Receptacle with GFI Breaker
- Code Insulation (R-14 Floor, R-19 Walls and R-25 Ceiling) *The Higher the "R-Value" the Greater the Insulating Power!*

SKYLINE®

For your comfort and safety, Skyline home designs are approved and inspected for conformance to federal standards.

*Dimensions stated to industry standards. Width and length dimensions are nominal and are not to be used for setup of home on site; consult selling retailers for exact specifications.

Overall length does not include approximately four foot hitch. The square footage is approximate and based upon nominal exterior floor size. Room sizes are measured from floor ends and wall centers.

Because of progressive product improvement, all prices and specifications are subject to change without prior notice or obligation to Skyline Corporation.

Your retailer, an independent contractor, who is not an agent of Skyline Corporation, is the party responsible for your purchase contract and any additions, deletions, alterations, or attachments made to or in your home.