

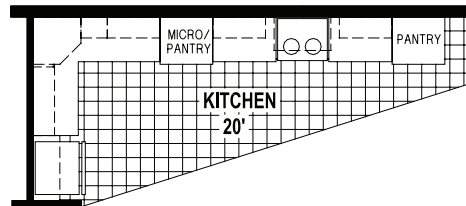
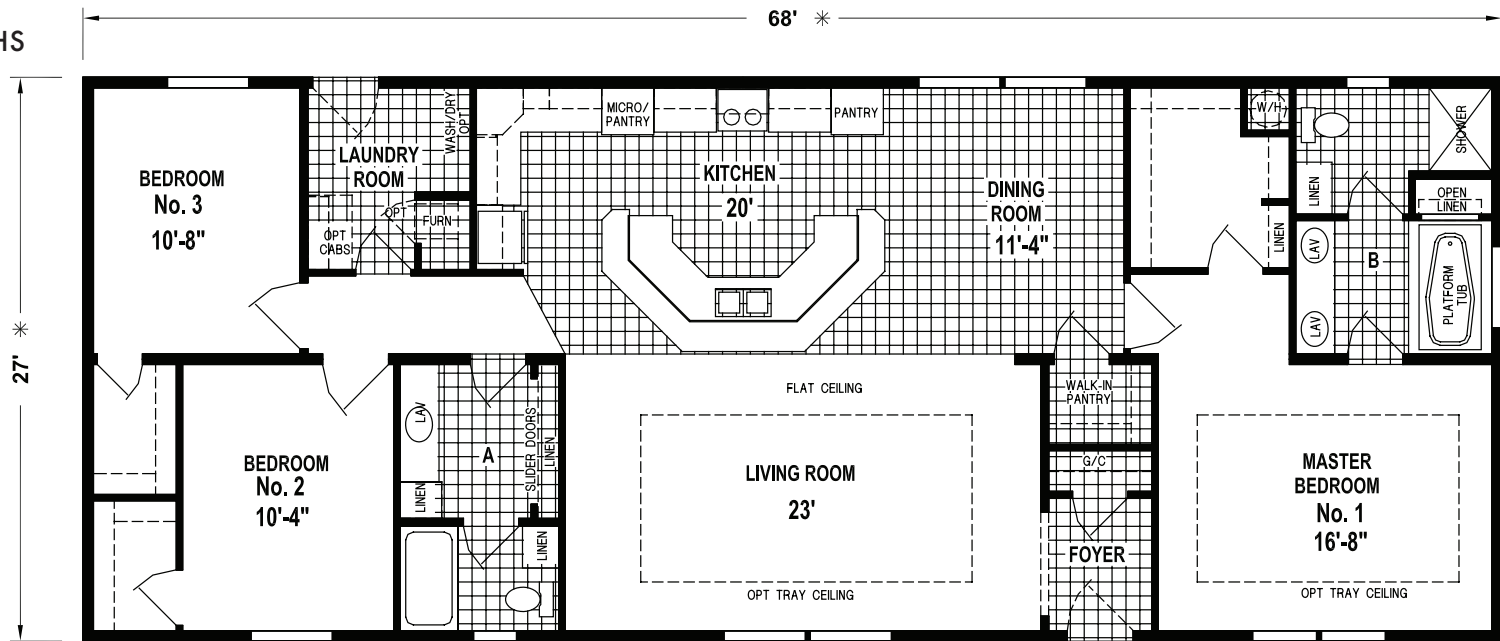
WOODBIDGE

SKYLINE HOMES OF McMinnville, OREGON

7568/6828

1,843 SQ. FT.
3 BEDROOM • 2 BATHS

OPTION SLIDING GLASS DOOR



OPTION RANGE HOOD KITCHEN



SKYLINE[®]
BRINGING AMERICA HOME. BRINGING AMERICA FUN.
WWW.SKYLINEHOMES.COM



7568/6828



LIVING AREAS

- Choice of (5) Interior Paint Colors
- 9' High Flat Ceilings
- Optional Tray Ceilings with Crown Moulding
- Crown Moulding in Living Room, Kitchen and Hallways
- 52" Ceiling Fan with Light in Living Room
- Wood Cornice Valances on All Windows Except Bathroom
- 5-1/4" Baseboards Throughout
- Metal Mini Blinds

KITCHEN

- Choice of (2) Natural Wood Cabinets (Butternut or Espresso)
- Lined Overhead Cabinets with Adjustable Shelves
- Full Extension Soft Close Drawer System
- Residential Hidden Cabinet Soft Close Door Hinges
- Round Cabinet Door Drawer Hardware
- 18 Cu. Ft. Double Door Frost-Free Refrigerator
- 30" Deluxe Electric Range with Glass Door
- Microwave Built into Pantry Cabinet with Trim Kit
- Stainless Steel Sink with Single Lever Faucet and Sprayer
- Bullnose Edge Counter Tops
- 6" Ceramic Tile Backsplash
- Plumb for Ice Maker

BATHROOM

- Choice of (2) Natural Wood Cabinets (Butternut or Espresso)
- Luxury Master Bath with Large Soaking Tub and Separate Shower
- Full Extension Soft Close Drawer System in Master Bath
- Residential Hidden Cabinet Soft Close Door Hinges
- Round Cabinet Door Drawer Hardware
- Power Vent Fan with Light
- Elongated China Commodes

- China Lav Sinks
- Bullnose Edge Counter Tops
- 6" Ceramic Tile Backsplash

BEDROOM

- Ventilated Wire Shelving in Closets
- 36" Interior Doors with Lever Handles
- Metal Mini Blinds
- Double Ventilated Wire Shelving in Closets (where applicable)

ADDITIONAL FEATURES

- Horizontal Cemplank Siding
- 30-Year Shingles (Fiberglass – Class A Fire Rated) in Choice of Colors
- Residential Finished Drywall Throughout
- 2-Panel Interior Doors
- Linoleum Floor at Entry
- Electric Forced Air Furnace
- Insulated Fiberglass Heat Ducts
- Perimeter Heating System Throughout with Toe Kick Registers in Kitchen and Bathrooms
- 40 Gallon Electric Water Heater
- Whole House Water Shut-Off Valve
- Residential PEX Waterlines
- Plumb for Washer
- Wire for Dryer
- 36" 6-Panel Fiberglass Front and Rear Doors with Deadbolts
- Energy Star Rated Low "E" Vinyl Windows
- Tongue and Groove OSB Decking
- 2 x 6 Sidewalls, 16" O. C.
- Exterior Receptacle with GFI Breaker



*For your comfort and safety, Skyline home designs are approved and inspected for conformance to federal standards.
Dimensions stated to industry standards. Width and length dimensions are nominal and are not to be used for setup of home on site; consult selling retailers for exact specifications. Overall length does not include approximately four foot hitch. The square footage is approximate and based upon nominal exterior floor size. Room sizes are measured from floor ends and wall centers.

Because of progressive product improvement, all prices and specifications are subject to change without prior notice or obligation to Skyline Corporation. Your retailer, an independent contractor, who is not an agent of Skyline Corporation, is the party responsible for your purchase contract and any additions, deletions, alterations, or attachments made to or in your home.