



**INFORMATION BROCHURE**



**TECTA**  
**SYSTEMS**

Making buildings smarter

☎ 020 8370 8393

✉ [info@tectasystems.com](mailto:info@tectasystems.com)

📍 Nicholas House, River Front, Enfield, EN1 3TF

🌐 [www.tectasystems.com](http://www.tectasystems.com)





# ABOUT US

TECTA Systems are the ultimate trusted advisors for all specialist system requirements.

Whether a standalone or a fully integrated solution , TECTA understands that no two situations are the same and will construct a seamless and tailored solution suited to your specific requirements.

TECTA's dedicated team have vast experience and knowledge across the security industry, and provide advice and guidance on deployment of the right solution for the right environment.

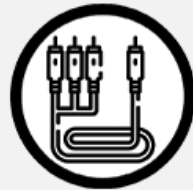
# WHAT WE OFFER



ACCESS  
CONTROL



AUTOMATION



A.V.



CCTV



DATA



DOOR  
ENTRY



FIBRE  
OPTICS



SECURITY

TECTA has a team of dedicated design, installation and maintenance engineers. Allowing us to ensure all aspects of your project are covered.





# ACCESS CONTROL

TECTA provides advice and guidance on choosing the right solution for the right environment. With access to all the leading access control systems, we choose the best suited product and design to fit your needs.

There are various access control systems available on the market, each one of these has different capabilities and limitations. At TECTA we have the experience and expertise to advise which system will best suit your needs.



ACCESS CONTROL



AUTOMATION



A.V.



CCTV



DATA



DOOR ENTRY



FIBRE OPTICS



SECURITY





# CCTV

CCTV systems have become a necessity of late, as crime is on the rise. Let TECTA put you one step ahead to safely secure your property.

We have access to all major CCTV brands allowing us to supply you with a system tailored to all your requirements. Whether a small analogue system or a large integrated IP solution.



ACCESS CONTROL



AUTOMATION



A.V.



CCTV



DATA



DOOR ENTRY



FIBRE OPTICS



SECURITY





# DOOR ENTRY

Door entry systems can be installed and applied to multiple client demands and situations. Big or small residential blocks, office blocks, warehouses.

There are multiple manufactures who build and supply door entry systems. There are also various types of systems available. We at TECTA have partnered with the leading manufactures in the industry, allowing the customer to benefit from a high quality and value for money system. TECTA will be able to design an install the system best suited to your needs and requirements no matter how big or small.



ACCESS CONTROL



AUTOMATION



A.V.



CCTV



DATA



DOOR ENTRY



FIBRE OPTICS



SECURITY





# SECURITY

Intrusion systems are an important part of any buildings security systems. TECTA design and supply systems with audible alerts which sound a siren if triggered or silent alarms which can send a message to a mobile phone or an alarm through to a third party operated control room.

There are 2 types of intrusion systems - wired and wireless systems. Wired systems are still our preferred choice as they offer a higher degree of resilience.



ACCESS CONTROL



AUTOMATION



A.V.



CCTV



DATA



DOOR ENTRY



FIBRE OPTICS



SECURITY





# BUILDING AUTOMATION

TECTA integrates all aspects of the building security project, safety equipment, lighting, air conditioning and ventilation. Integrating all components allows for easy monitoring and simple management of all systems. Intelligent building automation systems reduce energy consumption, saving you money.



ACCESS CONTROL



AUTOMATION



A.V.



CCTV



DATA



DOOR ENTRY

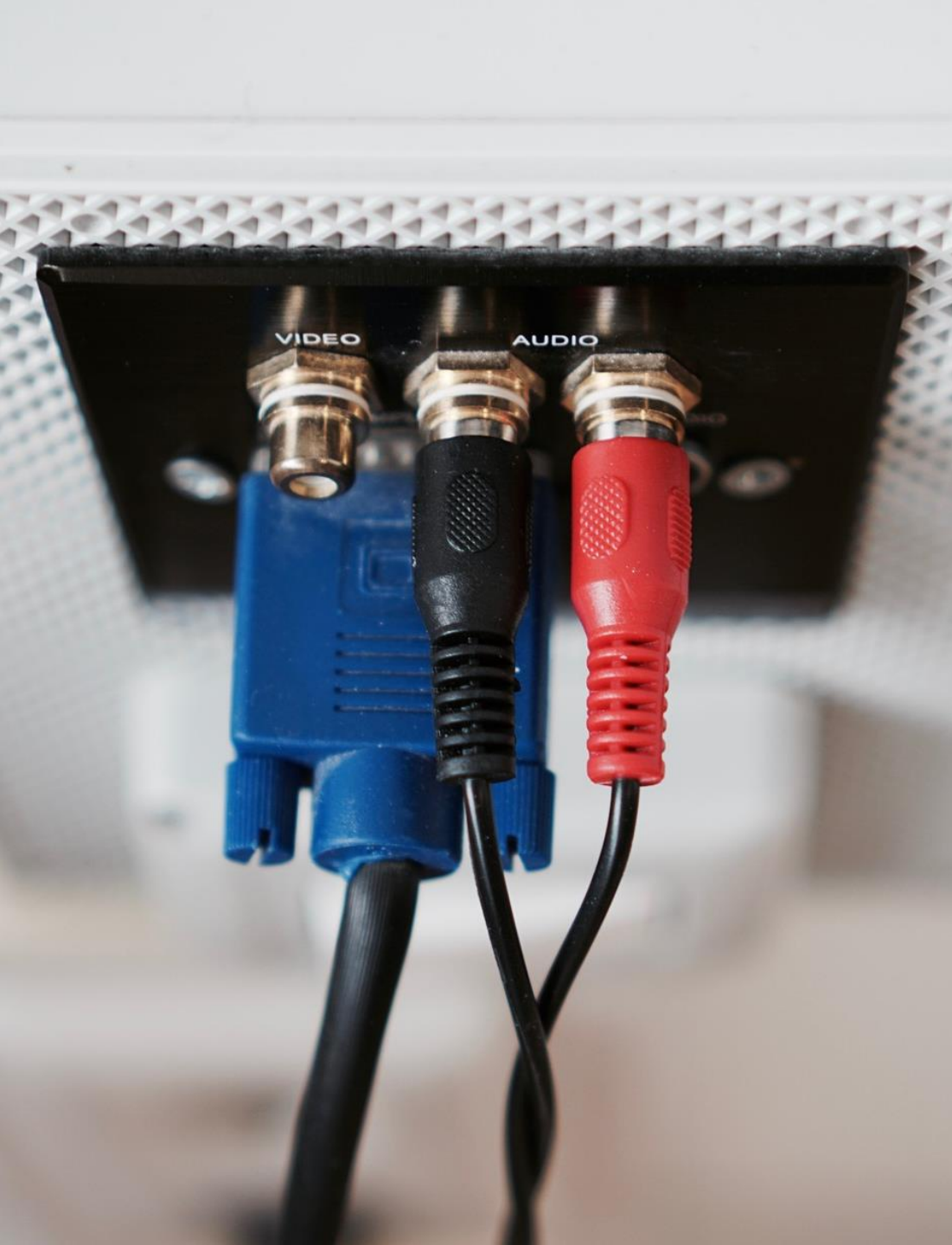


FIBRE OPTICS



SECURITY





## A.V. SYSTEMS

TECTA has the knowledge and experience to design and install any of your AV system needs, from simple projectors to full video conferencing solutions for your location. We can help you find the best solution for you at the best price.



ACCESS  
CONTROL



AUTOMATION



A.V.



CCTV



DATA



DOOR  
ENTRY



FIBRE  
OPTICS



SECURITY





# DATA INFRASTRUCTURE

TECTA has data installation experience in small office environments to bigger multi story buildings and data centres.

Our team has multiple years of experience in installing and maintaining data infrastructure.



ACCESS CONTROL



AUTOMATION



A.V.



CCTV



DATA



DOOR ENTRY



FIBRE OPTICS



SECURITY





# WIFI

As technology advances systems are moving from hard wired systems to wireless systems. We are at the forefront , with access to all the latest WIFI equipment designed around the office and the hospitality environment.

The team at TECTA are dedicated to design, install, configure and maintain a bespoke wireless network.



ACCESS CONTROL



AUTOMATION



A.V.



CCTV



DATA



DOOR ENTRY

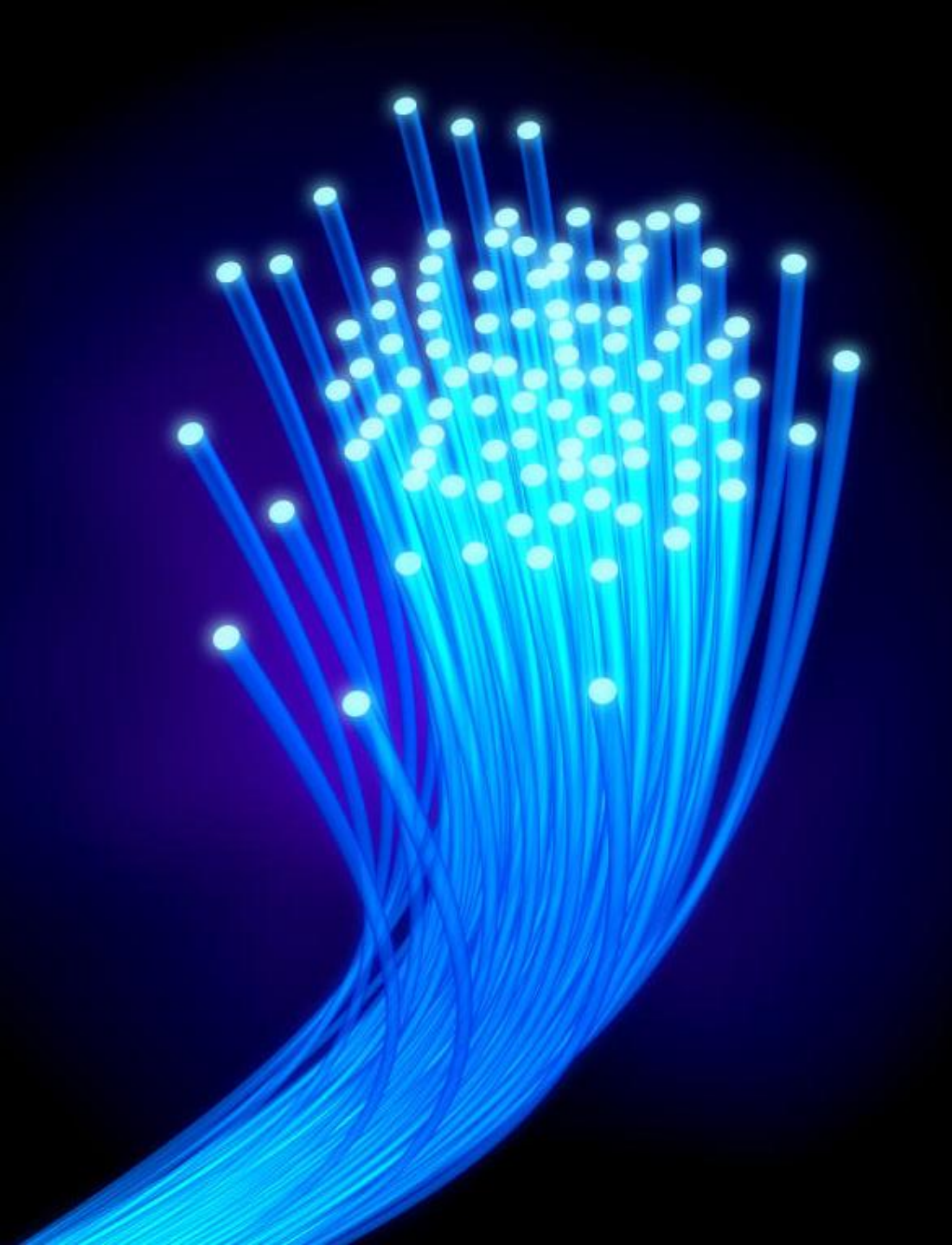


FIBRE OPTICS



SECURITY





# FIBRE OPTICS

TECTA Systems has a history of installing single mode and multi mode fibre networks, with systems comprised of blown fibre aerial fibre and dark fibre.

We have access to high end fusion splice machines allowing for the perfect splice every time. Our engineers are trained in using state of the art fault finding and testing equipment ensuring your fibre network meeting exact industry standards.



ACCESS  
CONTROL



AUTOMATION



A.V.



CCTV



DATA



DOOR  
ENTRY



FIBRE  
OPTICS



SECURITY



# WHY CHOOSE US

- Over 12 years experience in the specialised systems industry.
- Tecta offer a comprehensive service that sees through your project from start to finish.
- Dedicated service and maintenance division.
- Dedicated design team.
- Full working as a division of the Award-Winning Network Communications Group.





# TECTA SYSTEMS IS A DIVISION OF THE NETWORK COMMUNICATION GROUP



NETWORK BUSINESS CALL



NETWORK VOICE & DATA

NETWORK FINANCE LTD.



[enquiries@netcomms.co.uk](mailto:enquiries@netcomms.co.uk)



020 8370 8370



[www.netcomms.co.uk](http://www.netcomms.co.uk)



Nicholas House, River Front,  
Enfield, EN1 3TF



**TECTA**  
**SYSTEMS**



**info@tectasystems.com**



**020 8370 8393**



**www.tectasystems.com**



**Nicholas House, River Front,  
Enfield, EN1 3TF**

Part of

