

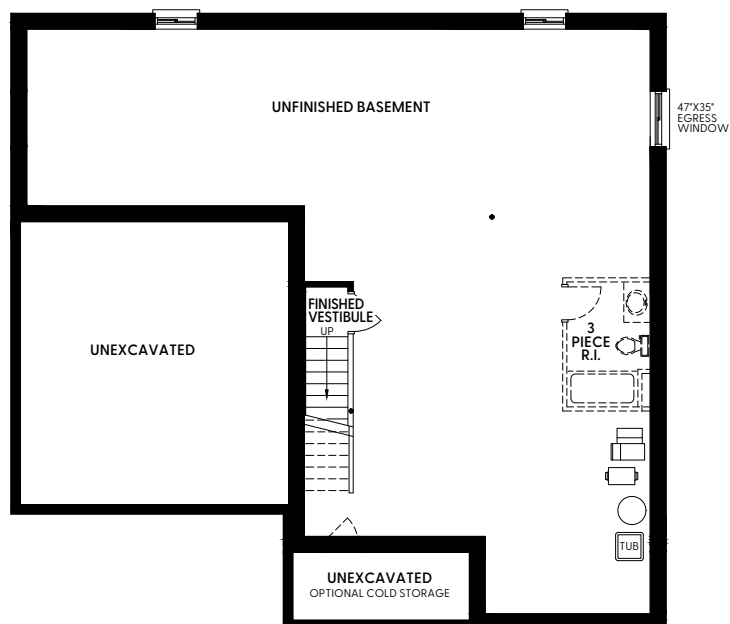
2 BEDROOMS | INCLUDES 69 SQ. FT. FINISHED VESTIBULE AREA IN BASEMENT



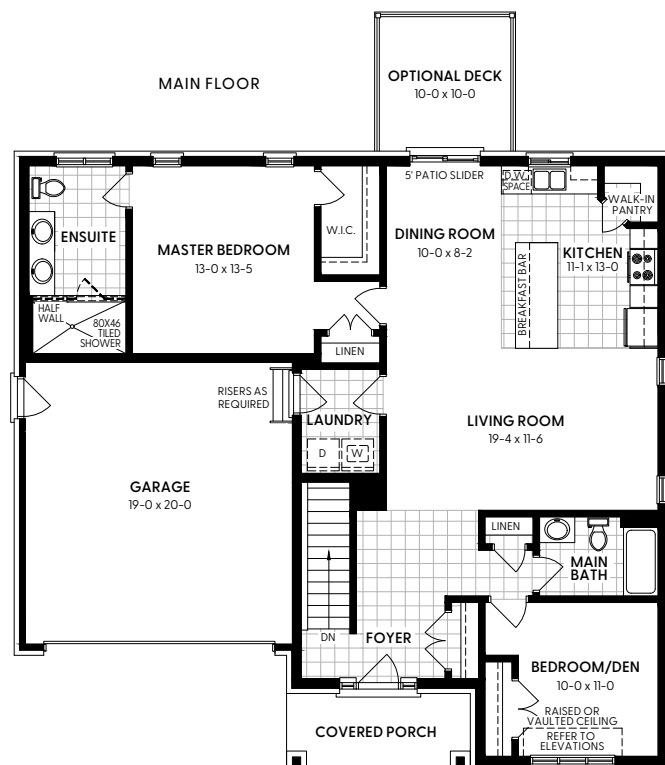
Elevation A



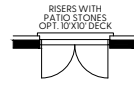
BASEMENT
(Finished vestibule)



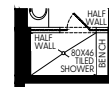
MAIN FLOOR



OPTIONAL
FRENCH DOOR



OPTIONAL
ENSUITE SHOWER



OPTIONAL
LINEAR GAS FIREPLACE



THE DUCHESS

1,838 SQ. FT. | 3 BEDROOMS

2,009 SQ. FT. | 4 BEDROOMS



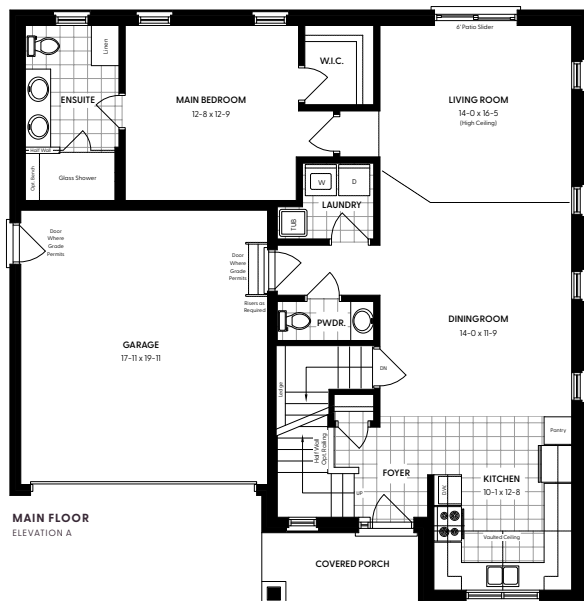
Elevation A



OPTIONAL LAUNDRY LAYOUT

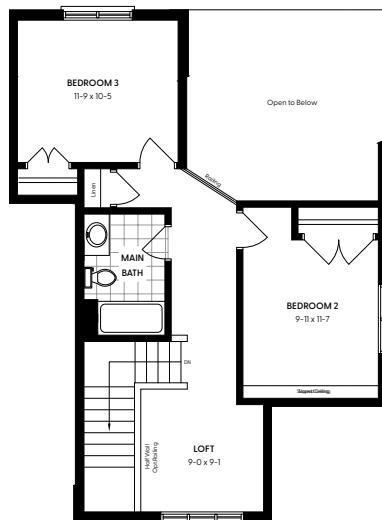


OPTIONAL FRENCH DOOR



MAIN FLOOR
ELEVATION A

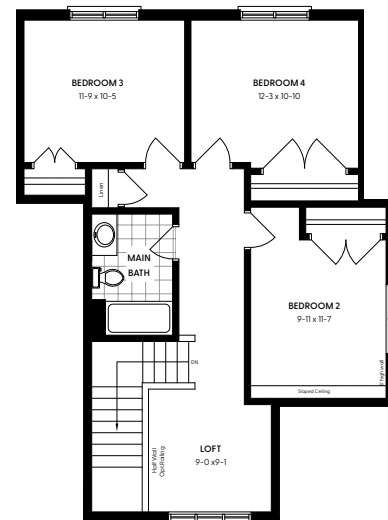
MAIN FLOOR
ELEVATION B



LOFT LEVEL
ELEVATION A



LOFT LEVEL
ELEVATION B



LOFT LEVEL - 4 BED LAYOUT
ELEVATION A



LOFT LEVEL - 4 BED LAYOUT
ELEVATION B



All illustrations are artistic concepts. Specifications, terms, and conditions are subject to change without notice. Plans and room dimensions may vary based on elevation. Actual usable floor space may differ from the stated floor area. Illustrations may depict optional features not included in the base price. Landscaping and plantings are conceptual and may differ from the final landscaping. The number of exterior steps may vary based on lot grading conditions. The locations of mechanical equipment and sump pumps are subject to change without notice and will be determined in accordance with approved building plans. Errors and Omissions Excepted (E.&O.E.).

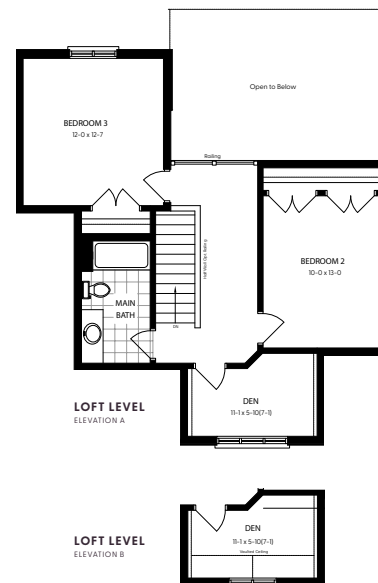
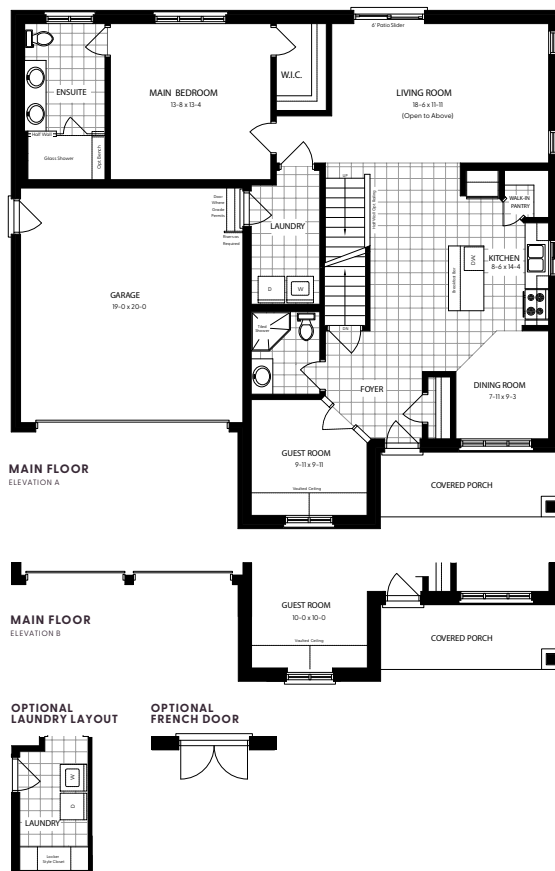
THE MONARCH

2,056 SQ. FT.

3 BEDROOMS

RM
ROYAL MAPLE
ROOTED IN LUXURY | JORDAN STATION

Elevation A



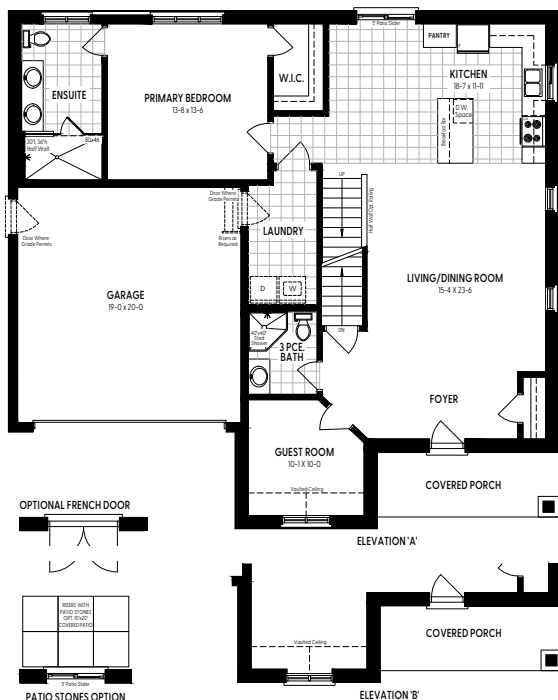
THE MONARCH

2,056 SQ. FT. | 3 BEDROOMS

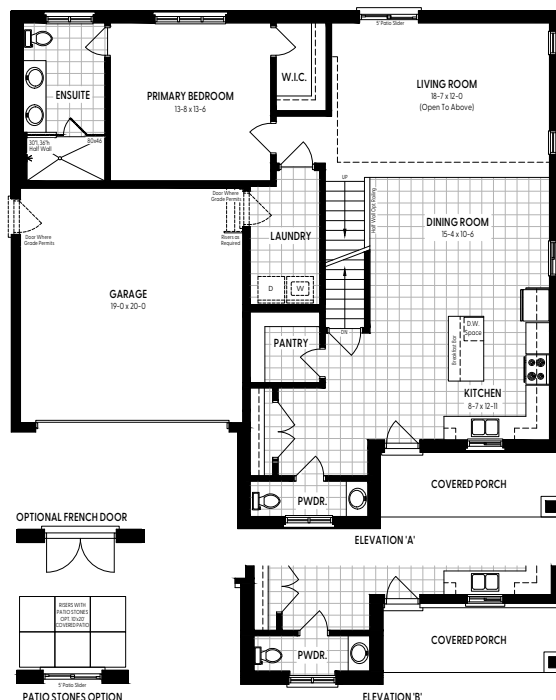
OPTIONAL MAIN FLOOR LAYOUTS



Elevation A



OPTIONAL MAIN FLOOR PLAN – OPTION 1



OPTIONAL MAIN FLOOR PLAN – OPTION 2

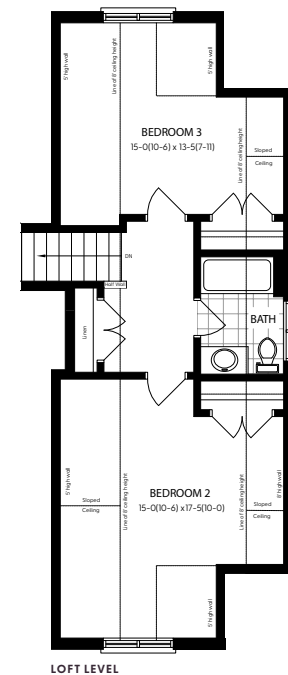
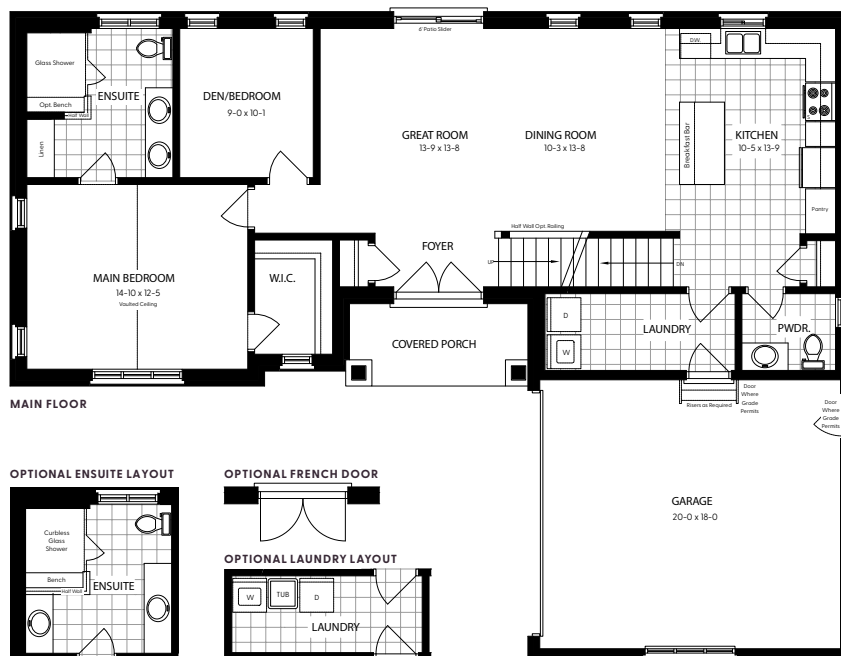
THE MARQUEE

2,036 SQ. FT.

3 BEDROOMS | INCLUDES 65 SQ. FT. FINISHED VESTIBULE AREA IN BASEMENT

RM
ROYAL MAPLE
ROOTED IN LUXURY | JORDAN STATION

Elevation A



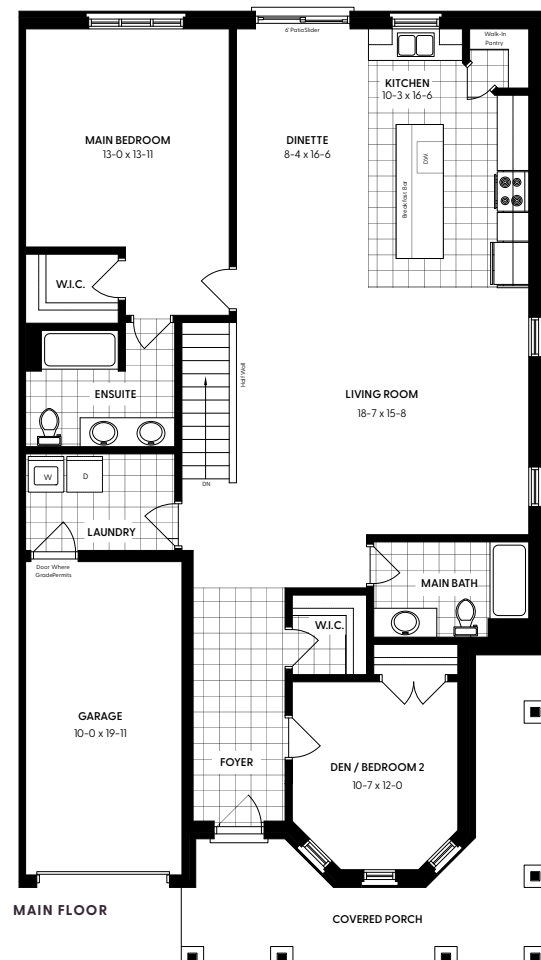
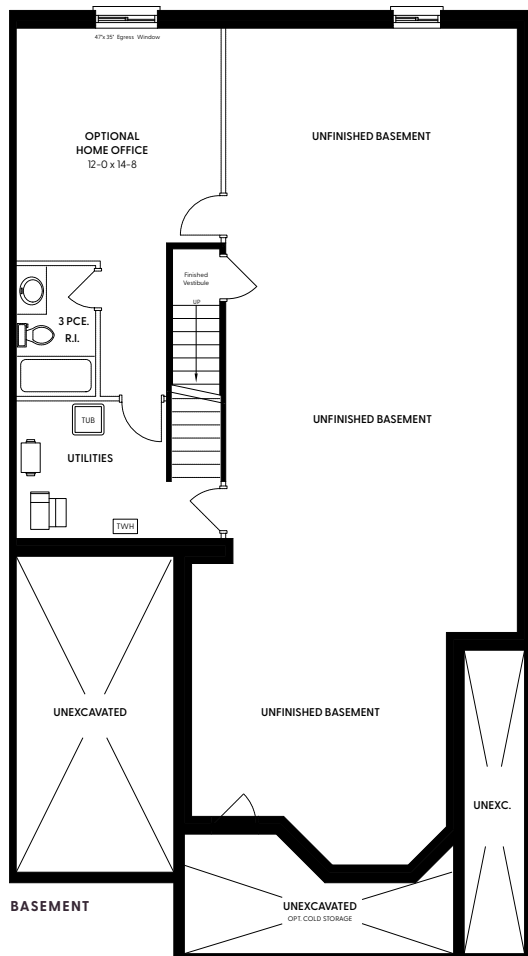
INCLUDES 57 SQ. FT. FINISHED VESTIBULE AREA IN BASEMENT



Townhome Exterior-End



A photograph of the exterior of a townhome end unit. The house features a dark grey shingled roof with a prominent front-facing gable over a covered porch. The porch is supported by four white columns and has a dark base. To the right of the porch is a two-car garage with a light-colored wood-grain door. The house is surrounded by green landscaping, including bushes and trees, and is set on a paved driveway.



THE NOBLE

1,279 SQ. FT.

INCLUDES 57 SQ. FT. FINISHED VESTIBULE AREA IN BASEMENT



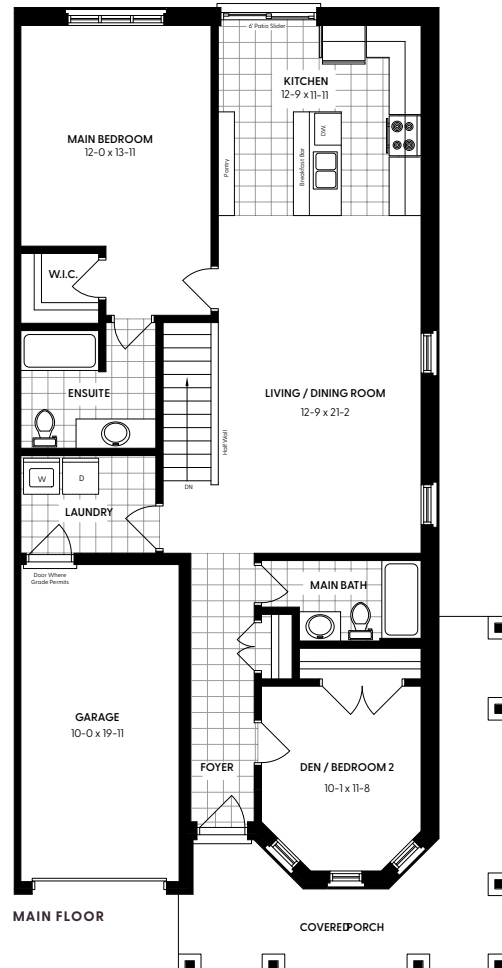
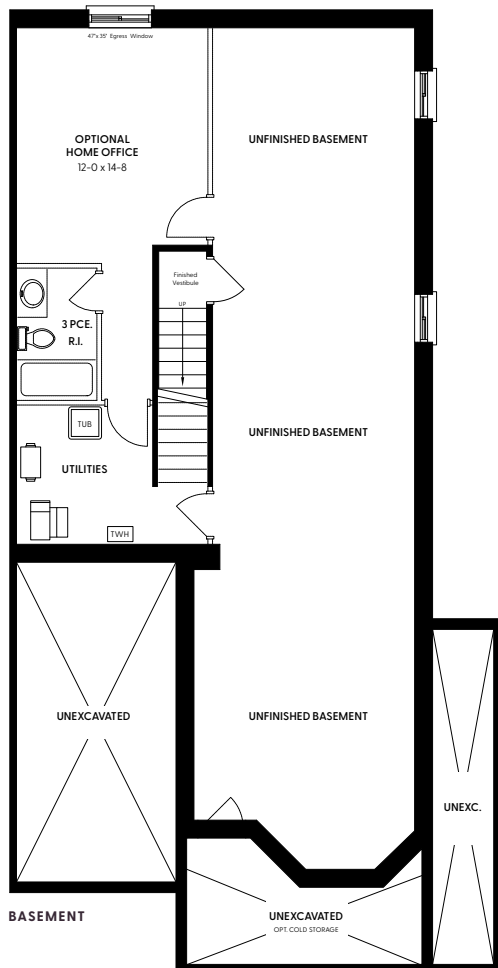
Townhome End Unit



TOWNHOME BLOCK A



TOWNHOME BLOCK B



THE BARON

1,271 SQ. FT.

INCLUDES 57 SQ. FT. FINISHED VESTIBULE AREA IN BASEMENT

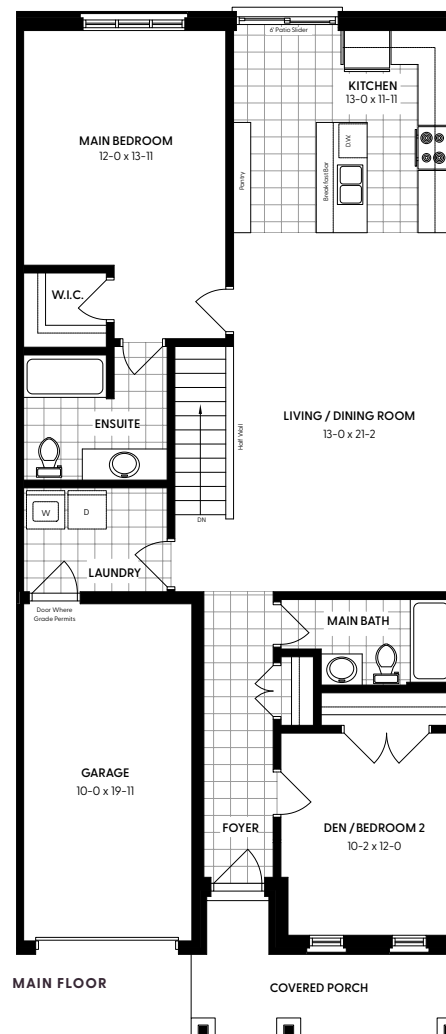
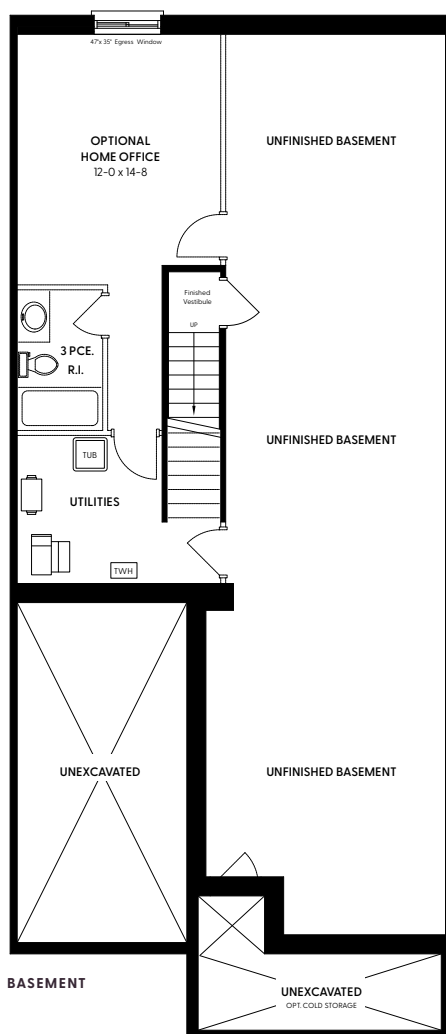


Townhome Interior Unit



TOWNHOME BLOCK A

TOWNHOME BLOCK B



All illustrations are artistic concepts. Specifications, terms, and conditions are subject to change without notice. Plans and room dimensions may vary based on elevation. Actual usable floor space may differ from the stated floor area. Illustrations may depict optional features not included in the base price. Landscaping and plantings are conceptual and may differ from the final landscaping. The number of exterior steps may vary based on lot grading conditions. The locations of mechanical equipment and sump pumps are subject to change without notice and will be determined in accordance with approved building plans. Errors and Omissions Excepted (E.&O.E.).