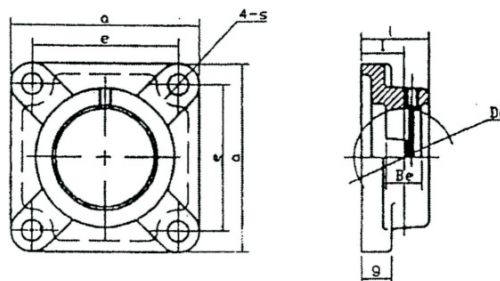


# Pillow block bearings

F SQUARE FLANGE UNITS  
 F200 Series  
 F300 Series



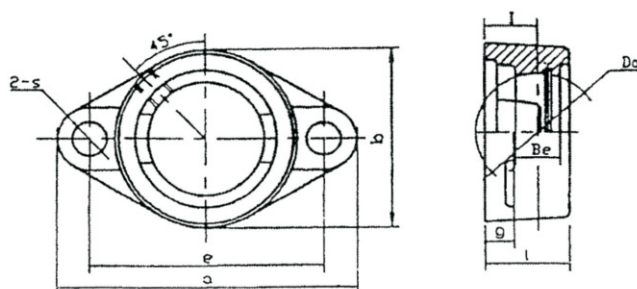
Housing No.	Dimensions mm								Weight(kg)
	Da	l	a	e	l	g	Be	s	
F201	47	15	86	64	25.5	11	17	12	0.38
F202	47	15	86	64	25.5	11	17	12	0.38
F203	47	15	86	64	25.5	11	17	12	0.38
F204	47	15	86	64	25.5	11	17	12	0.38
F205	52	16	95	70	27	13	17	12	0.65
F206	62	18	108	83	31	13	19	12	0.85
F207	72	19	117	92	34	15	20	14	1.05
F208	80	21	130	102	36	15	21	16	1.25
F209	85	22	137	105	38	16	22	16	1.31
F210	90	22	143	111	40	16	23	16	1.30
F211	100	25	162	130	43	18	24	19	1.60
F212	110	29	175	143	48	18	26	19	3.00
F213	120	30	187	149	50	22	27	19	3.40
F214	125	31	193	152	54	22	29	19	3.70
F215	130	34	200	159	56	22	30	19	4.85
F216	140	34	208	165	58	22	32	23	5.00
F217	150	36	220	175	63	24	34	23	4.90
F218	160	40	235	187	68	24	36	23	6.30

Housing No.	Dimensions mm								Weight(kg)
	Da	l	a	e	l	g	Be	s	
F305	62	16	110	80	29	13	20	16	0.90
F306	72	18	125	95	32	15	23	16	1.28
F307	80	20	135	100	36	16	25	19	1.57
F308	90	23	150	112	40	17	27	19	2.00
F309	100	25	160	125	44	18	29	19	2.60
F310	110	28	175	132	48	19	32	23	2.68
F311	120	30	185	140	52	20	34	23	3.30
F312	130	33	195	150	56	22	36	23	4.10
F313	140	33	208	166	58	22	39	23	4.90
F314	150	36	226	178	61	25	41	25	5.60
F315	160	39	236	184	66	25	43	25	7.00
F316	170	38	250	196	68	27	45	31	9.00
F317	180	44	260	204	74	27	47	31	10.45
F318	190	44	280	216	76	30	49	35	12.80
F319	200	59	290	228	94	30	51	35	13.80
F320	215	59	310	242	94	32	55	38	15.20
F321	225	59	310	242	94	32	57	38	15.00
F322	240	60	340	266	96	35	59	41	21.80
F324	260	65	370	290	110	40	63	41	25.20
F326	280	65	410	320	115	45	67	41	37.00
F328	300	75	450	350	125	55	71	41	57.80



# Pillow block bearings

FL TWO-BOLT FLANGE UNITS  
 FL200 Series  
 FL300 Series



Housing No.	Dimensions mm									Weight(kg)
	Da	l	a	e	l	g	Be	b	s	
FL201	47	15	113	90	25.5	12	17	60	12	0.25
FL202	47	15	113	90	25.5	12	17	60	12	0.25
FL203	47	15	113	90	25.5	12	17	60	12	0.25
FL204	47	15	113	90	25.5	12	17	60	12	0.28
FL205	52	16	130	99	27	14	17	68	16	0.40
FL206	62	18	148	117	31	14	19	80	16	0.54
FL207	72	19	161	130	34	16	20	90	16	0.65
FL208	80	21	175	144	36	16	21	100	16	0.80
FL209	85	22	188	148	38	18	22	108	19	1.15
FL210	90	22	197	157	40	18	23	115	19	1.25
FL211	100	25	224	184	43	20	24	130	19	1.85
FL212	110	29	250	202	48	20	26	140	23	2.10
FL213	120	30	258	210	50	24	27	155	23	2.80
FL214	125	31	265	216	54	24	29	160	23	3.20
FL215	130	34	275	225	56	24	30	165	23	2.80
FL216	140	34	290	233	58	24	32	180	25	3.53
FL217	150	36	305	248	63	26	34	190	25	5.50
FL218	160	40	320	265	68	26	36	205	25	6.00

Housing No.	Dimensions mm									Weight(kg)
	Da	l	a	e	l	g	Be	b	s	
FL305	62	16	150	113	29	13	20	80	19	0.70
FL306	72	18	180	134	32	15	23	90	23	1.10
FL307	80	20	185	141	36	16	25	100	23	1.20
FL308	90	23	200	158	40	17	27	112	23	1.50
FL309	100	25	230	177	44	18	29	125	25	2.20
FL310	110	28	240	187	48	19	32	140	25	2.70
FL311	120	30	250	198	52	20	34	150	25	3.15
FL312	130	33	270	212	56	22	36	160	31	3.30
FL313	140	33	295	240	58	25	39	175	31	5.10
FL314	150	36	315	250	61	28	41	185	35	6.10
FL315	160	39	320	260	66	30	43	195	35	6.50
FL316	170	38	355	285	68	32	45	210	38	8.50
FL317	180	44	370	300	74	32	47	220	38	10.45
FL318	190	44	385	315	76	36	49	235	38	12.50
FL319	200	59	405	330	94	40	51	250	41	16.00
FL320	215	59	440	360	94	40	55	270	44	17.30
FL321	225	59	440	360	94	40	57	270	44	15.09
FL322	240	60	470	390	96	42	59	300	44	20.20
FL324	260	65	520	430	110	48	63	330	47	29.50
FL326	280	65	550	460	115	50	67	360	47	38.00
FL328	300	75	600	500	125	60	71	400	51	54.00

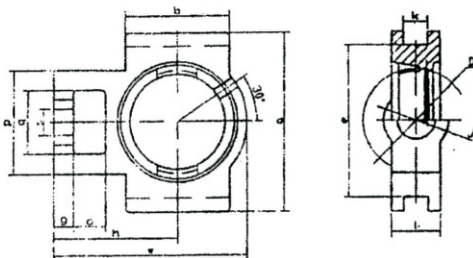


# Pillow block bearings

## T TAKE-UP UNITS

T200 Series

T300 Series



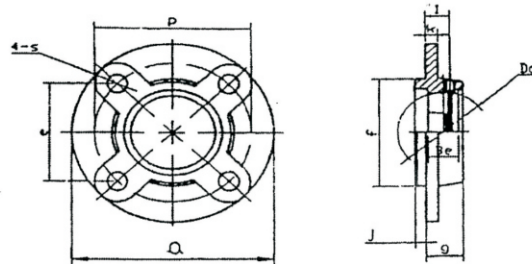
Housing No.	Dimensions mm														Weight
	Da	O	g	p	q	s	b	k	e	g	w	l	j	h	
T201	47	16	10	51	32	19	51	12	76	89	96	21	32	61	0.56
T202	47	16	10	51	32	19	51	12	76	89	96	21	32	61	0.56
T203	47	16	10	51	32	19	51	12	76	89	96	21	32	61	0.56
T204	47	16	10	51	32	19	51	12	76	89	94	21	32	62	0.56
T205	52	16	10	51	32	19	51	12	76	89	97	24	32	62	0.63
T206	62	16	10	56	37	22	57	12	89	102	113	28	37	70	0.95
T207	72	16	13	64	37	22	64	12	89	102	129	30	37	78	1.09
T208	80	19	16	83	49	29	83	16	102	114	144	33	49	88	1.72
T209	85	19	16	83	49	29	83	16	102	117	144	35	49	87	1.75
T210	90	19	16	83	49	29	86	16	102	117	149	37	49	90	1.75
T211	100	25	19	102	64	35	95	22	130	146	171	38	64	106	2.80
T212	110	32	19	102	64	35	102	22	130	146	194	42	64	119	3.40
T213	120	32	21	111	70	41	121	26	151	167	224	44	70	137	5.00
T214	125	32	21	111	70	41	121	26	151	167	224	46	70	137	4.70
T215	130	32	21	111	70	41	121	26	151	167	232	48	70	140	5.10
T216	140	32	21	111	70	41	121	26	165	184	235	51	70	140	5.50
T217	150	38	29	124	73	48	157	30	173	198	260	54	73	162	7.40
T218	160	40	30	130	80	48	140	30	190	215	275	55	80	170	10.20

Housing No.	Dimensions mm														Weight
	Da	O	g	p	q	s	b	k	e	g	w	l	j	h	
T305	62	16	12	62	36	26	65	12	80	89	122	26	36	76	1.05
T306	72	18	14	70	41	28	74	16	90	100	137	28	41	85	1.24
T307	80	20	15	75	45	30	80	16	100	111	150	32	45	94	1.69
T308	90	22	17	83	50	32	89	18	112	124	162	34	50	100	2.04
T309	100	24	18	90	55	34	97	18	125	138	178	38	55	110	2.72
T310	110	27	20	98	61	37	106	20	140	151	191	40	61	117	3.35
T311	120	29	21	105	66	39	115	22	150	163	207	44	66	127	4.33
T312	130	31	23	113	71	41	123	22	160	178	220	46	71	135	5.00
T313	140	32	25	116	71	43	134	26	170	190	238	50	80	146	6.00
T314	150	36	25	130	85	46	140	26	180	202	252	52	90	155	7.05
T315	160	36	25	132	85	46	150	26	192	216	262	55	90	160	9.28
T316	170	42	28	150	98	53	160	30	204	230	282	60	102	174	10.03
T317	180	42	30	152	98	53	170	32	214	240	298	64	102	183	13.30
T318	190	46	30	160	106	57	175	32	228	255	312	66	110	192	14.10
T319	200	46	31	165	106	57	180	35	240	270	322	72	110	197	16.30
T320	215	48	32	175	115	59	200	35	260	290	345	75	120	210	21.20
T321	225	48	32	175	115	59	200	35	260	290	345	75	120	210	19.80
T322	240	52	38	185	125	65	215	38	285	320	385	80	130	235	25.70
T324	260	60	42	210	140	70	230	45	320	355	432	90	140	267	36.50
T326	280	65	45	220	150	75	240	50	350	385	465	100	150	285	46.00
T328	300	70	50	230	160	80	255	50	380	415	515	100	155	315	55.50



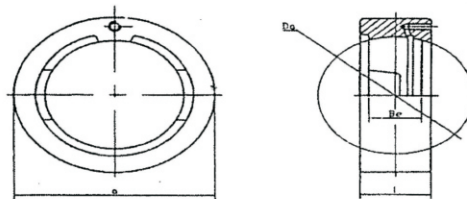
# Pillow block bearings

FC FLANGE CARTRIDGE UNITS  
 FC200 Series  
 FCS200 Series  
 FCF200 Series



Housing No.	Dimensions mm											Weight(kg)
	Da	l	a	e	j	g	Be	s	f	p	k	
FC201	47	10	100	55.1	5	20.5	17	12	62	78	7	0.55
FC202	47	10	100	55.1	5	20.5	17	12	62	78	7	0.55
FC203	47	10	100	55.1	5	20.5	17	12	62	78	7	0.55
FC204	47	10	100	55.1	5	20.5	17	12	62	78	7	0.55
FC205	52	10	115	63.6	6	21	17	12	70	90	7	0.80
FC206	62	10	125	70.7	8	23	19	12	80	100	8	1.00
FC207	72	11	135	77.8	8	26	20	14	90	110	9	1.20
FC208	80	11	145	84.8	10	26	21	14	100	120	9	1.45
FC209	85	10	160	93.3	12	26	22	16	105	132	14	2.10
FC210	90	10	165	97.6	12	28	23	16	110	138	14	2.10
FC211	100	13	185	106.1	12	31	24	19	125	150	15	3.10
FC212	110	17	195	113.1	12	36	26	19	135	160	15	3.20
FC213	120	16	205	120.2	14	36	27	19	145	170	15	3.75
FC214	125	17	215	125.1	14	40	29	19	150	177	18	4.75
FC215	130	18	220	130.1	16	40	30	19	160	184	18	5.00
FC216	140	18	240	141.4	16	42	32	23	170	200	18	6.10
FC217	150	18	250	147.1	18	45	34	23	180	208	20	7.10
FC218	160	22	265	155.5	18	50	36	23	190	220	20	8.00

C CARTRIDGE UNITS  
 C200 Series



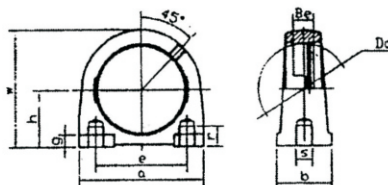
Housing No.	Dimensions mm				Weight(kg)
	Da	a	l	Be	
C201	47	72	20	17	0.33
C202	47	72	20	17	0.33
C203	47	72	20	17	0.33
C204	47	72	20	17	0.33
C205	52	80	22	17	0.50
C206	62	85	27	19	0.57
C207	72	90	28	20	0.51
C208	80	100	30	21	0.65
C209	85	110	31	22	0.90
C210	90	120	33	23	1.20
C211	100	125	35	24	1.25
C212	110	130	38	26	1.47
C213	120	140	40	27	1.75



# Pillow block bearings

## PA PILLOW BLOCKS

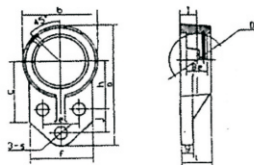
### PA200 Series



Housing No.	Dimensions mm										Weight(kg)
	Da	h	a	e	g	w	b	Be	S	r	
PA201	47	30.2	76	52	8	62	38	17	M10	12	0.40
PA202	47	30.2	76	52	8	62	38	17	M10	12	0.40
PA203	47	30.2	76	52	8	62	38	17	M10	12	0.40
PA204	47	30.2	76	52	8	62	38	17	M10	12	0.42
PA205	52	36.5	84	56	10	72	38	17	M10	15	0.61
PA206	62	42.9	94	66	10	84	48	19	M14	18	0.93
PA207	72	47.6	110	80	12	95	48	20	M14	20	1.21
PA208	80	49.2	116	84	12	100	54	21	M14	20	1.47
PA209	85	54.2	120	90	12	108	54	22	M14	25	1.50
PA210	90	57.2	130	94	14	116	60	23	M16	25	2.00
PA211	100	63.5	140	104	14	125	66	24	M16	25	2.50
PA212	110	69.9	150	114	15	138	68	26	M16	25	2.70
PA213	120	76.2	160	124	15	150	70	27	M16	25	4.37

## FB THREE-BOLT FLANGE UNITS

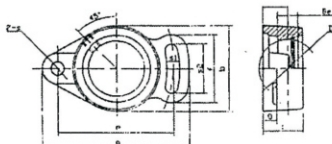
### FB200 Series



Housing No.	Dimensions mm												Weight(kg)	
	Da	h	a	e	j	l	g	l	c	s	f	Be		b
FB201-FB203	47	42.9	108	38.1	22	15.9	8	25.4	52	10	60.3	17	63.5	0.38
FB204	47	42.9	108	38.1	22	15.9	8	25.4	52	10	60.3	17	63.5	0.38
FB205	52	46	121	41.3	28.5	16.7	9.5	28.5	52	10	63.5	17	70	0.49
FB206	62	54.4	137	47.6	31.7	18.6	9.5	32	55	10	70	19	83	0.61
FB207	72	60.3	156	50.8	31.7	21	12.7	36.5	62	13	83	20	95	0.75
FB208	80	60.3	164	50	41.3	21	15.9	35.7	72	12	78	21	100	0.80
FB209	85	65	174	54	42.9	21.8	18.3	38	76	12	80	22	106	1.50
FB210	90	74.6	190	70	41.3	21.8	12.7	38	82	13	102	23	118	1.80

## FA TWO-BOLT FLANGE UNITS

### FA200 Series

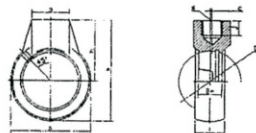


Housing No.	Dimensions mm												Weight(kg)
	Da	h	a	e	j	l	g	l	c	s	f	b	
FA204	47	15	98	78	25.5	12	17	60	10	10	40	54	0.30
FA205	52	16	125	98	27	14	17	68	12	13	51	65	0.50
FA206	62	18	144	117	31	14	19	80	12	13	58	72	0.65
FA207	72	19	161	130	34	16	20	90	14	15	66	82	0.90
FA208	80	21	175	144	36	16	21	100	14	15	71	87	1.00
FA209	85	22	171	148	38	18	22	108	16	17	72	90	1.20
FA210	90	22	190	157	40	18	23	115	16	17	76	94	1.40
FA211	100	25	219	184	43	20	24	130	16	17	86	104	2.30



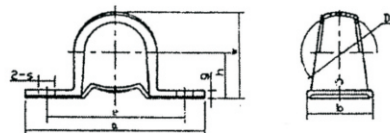
# Pillow block bearings

## HA HANGER BEARING UNITS HA200 Series



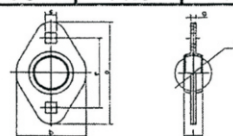
Housing No.	Dimensions mm										Weight(kg)
	Da	Be	a	d	w	h	c	j	s	l	
HA201-HA204	47	17	64	40	96	64		19.1	PF3/4	21	0.50
HA205	52	17	78	40	103	64		19.1	PF3/4	24	0.50
HA206	62	19	78	40	103	64		19.1	PF3/4	28	0.50
HA207	72	20	92	40	116	70		19.1	PF3/4	30	0.60
HA208	80	21	96	40	121	73	2	19.1	PF3/4	33	0.50
HA209	85	22	108	48	136	82	5	21	PF1	35	1.40
HA210	90	23	118	48	142	83	5	21	PF1	37	1.80
HA211	100	24	126	60	158	95	7	25	PF1-1/4	38	1.82
HA212	110	26	142	60	173	102	9	28	PF1-1/4	42	2.87
HA213	120	27	166	70	200	117	9.5	32	PF1-1/2	44	4.75

## PP CUSHIONED PILLOW BLOCKS PP200 Series



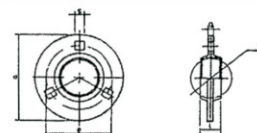
Housing No.	Dimensions mm								Weight(kg)
	Da	h	a	e	b	s	g	w	
PP203	40	22.2	86	68	25	43.8	9.5	3.2	0.12
PP204	47	25.4	98	76	32	50.5	9.5	3.2	0.13
PP205	52	28.6	108	86	32	56.6	11.5	4	0.14
PP206	62	33.3	117	95	38	66.3	11.5	4	0.15
PP207	72	39.7	129	106	42	78	11.5	4.6	0.23

## PFL CUSHIONED FLANGE UNITS PFL200 Series



Housing No.	Dimensions mm							Weight(kg)
	Da	a	e	g	s	l	b	
PFL203	40	81	63.5	4	7X7	14	59	0.08
PFL204	47	90	71.5	4	9X9	16	67	0.13
PFL205	52	95	76	4	9X9	18	71	0.15
PFL206	62	113	90.5	5.2	11X11	19	84	0.19
PFL207	72	125	100	5.2	11X11	22	94	0.21
PFL208	80	148	119	6.8	14X14	23	110	0.34

## PF CUSHIONED CIRCLE UNITS PF200 Series



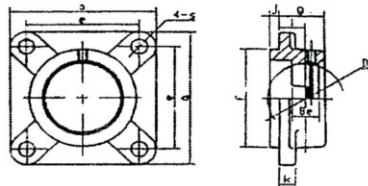
Housing No.	Dimensions mm						Weight(kg)
	Da	a	e	g	s	l	
PF203	40	81	63	4	7X7	14	0.08
PF204	47	90	71	4	9X9	17	0.13
PF205	52	95	76	4	9X9	18	0.2
PF206	62	113	90	5.2	11X11	19	0.29
PF207	72	122	100	5.2	11X11	21	0.31
PF208	80	148	119	6.8	14X14	21	0.34



# Pillow block bearings

## FS FLANGE CARTRIDGE UNITS

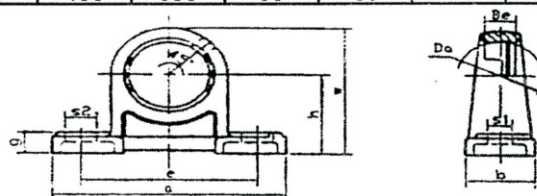
### FS300 Series



Housing No.	Dimensions mm										Weight(kg)
	Da	l	f	j	a	e	g	k	Be	s	
FS305	62	9	80	7	110	80	22	13	20	16	0.82
FS306	72	10	90	8	125	95	24	15	23	16	1.15
FS307	80	11	100	9	135	100	27	16	25	19	1.45
FS308	90	13	115	10	150	112	30	17	27	19	2.00
FS309	100	14	125	11	160	125	33	18	29	19	2.35
FS310	110	16	140	12	175	132	36	19	32	23	3.15
FS311	120	17	150	13	185	140	39	20	34	23	3.60
FS312	130	19	160	14	195	150	42	22	36	23	4.20
FS313	140	15	175	18	208	166	40	22	39	23	5.00
FS314	150	18	185	18	226	178	43	25	41	25	6.30
FS315	160	21	200	18	236	184	48	25	43	25	7.40
FS316	170	18	210	20	250	196	48	27	45	31	8.50
FS317	180	24	220	20	260	204	54	27	47	31	9.20
FS318	190	24	240	20	280	216	56	30	49	35	12.50
FS319	200	39	250	20	290	228	74	30	51	35	14.50
FS320	215	39	260	20	310	242	74	32	55	38	17.00
FS321	225	39	260	20	310	242	74	32	57	38	14.00
FS322	240	35	300	25	340	266	71	35	59	41	21.50
FS324	260	35	330	30	370	290	80	40	63	41	30.00
FS326	280	35	360	30	410	320	85	45	67	41	41.50
FS328	300	45	400	30	450	350	95	55	71	41	61.50

## PH PILLOW BLOCKS

### PH200 Series



Housing No.	Dimensions mm										Weight(kg)
	Da	h	a	e	g	w	b	Be	s1	s2	
PH201	47	70	125	95	13	97	38	17	13	19	0.65
PH202	47	70	125	95	13	97	38	17	13	19	0.65
PH203	47	70	125	95	13	97	38	17	13	19	0.65
PH204	47	70	127	95	15	101	40	17	13	19	0.75
PH205	52	80	140	105	16	114	50	17	13	19	1.00
PH206	62	90	165	121	18	130	50	19	17	21	1.42
PH207	72	95	167	127	19	140	60	20	17	21	1.55
PH208	80	100	184	137	19	150	70	21	17	25	2.15
PH209	85	105	190	146	20	158	70	22	17	25	2.31
PH210	90	110	206	159	22	165	70	23	20	25	2.80
PH211	100	120	220	171	22	181	75	24	20	25	4.40
PH212	110	130	235	184	25	197	85	26	20	25	4.80
PH213	120	140	262	203	27	212	95	27	23	28	5.60
PH214	125	150	268	210	28	225	105	29	23	28	6.20
PH215	130	160	275	217	29	238	115	30	23	28	7.40
PH216	140	170	290	232	30	253	125	32	23	28	8.00