



RTO and GO – PUBLIC TRANSACTION WITH

April, 2026

Executive Summary

Pre- Money Shares:
51.4mm shares o/s, 69.5 f/d

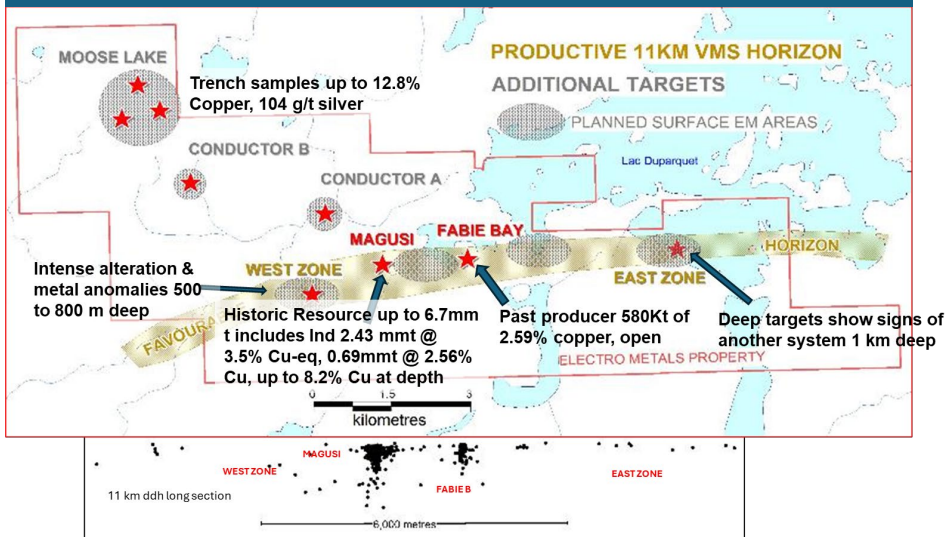


Electro Metals is targeting to go-public via an RTO with BWR Exploration (BWR-TSXV). The Company is focused on its Magusi project, a high-grade copper-zinc-silver-gold VMS deposit 35km northwest of the Glencore smelter in Rouyn-Noranda, Québec and high grade gold in Manitoba.

- ✓ Historical 43-101 resource for **Magusi** Indicated 2.43Mt @ 3.5% CuEq and Inferred 687kt @ 3.3% CuEq for **total contained resources of 253 mm lbs CuEq*** removing substantial risk with over 100,000 metres of prior drilling
- ✓ Focused on **quick and low-cost development of Magusi from a shallow open pit**, shipping to local concentrators, providing early cash-flow plus **on strike & down dip VMS exploration targets**
- ✓ Additionally, the **Little Stull Lake** high-grade gold project in NE Manitoba has a historic non-compliant resource estimate of **750kt @ 10.3g/t gold, for 250,000 oz** located in a 1 km portion of a 100%-owned 40 km long district

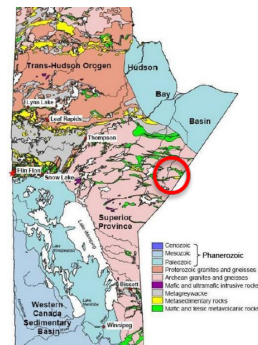
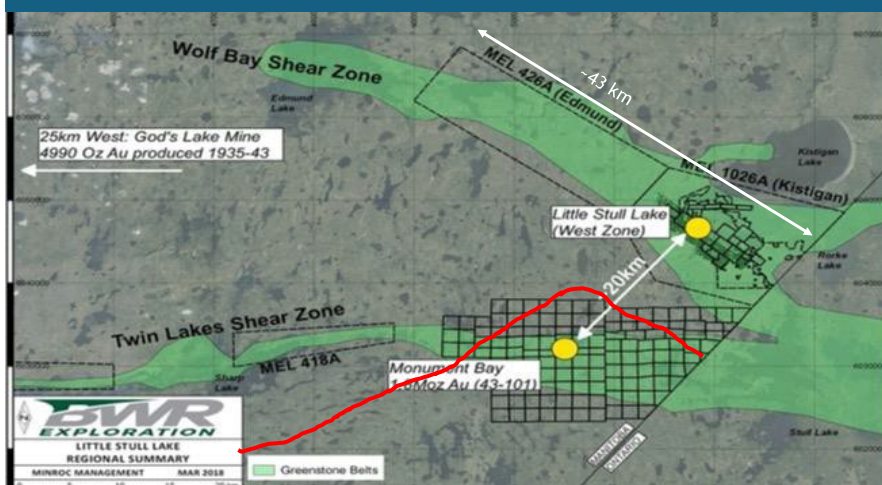
Why Electro Metals? Near Term Multi-Metal Cash Flow, Long Term Gold Upside

Multi - deposit Setting of Magusi Project



- Proven Mining District. Tier 1
- Two known deposits on site
- Past economic production
- Resource expansion upside
- New discovery potential
- “Brownfield Restart”

District Scale of Little Stull Lake Project



- Historic mining area, pre WW2
- Emerging new District Play
- High grade resource >10 g/t
- Scalable, resource drilled to 150m
- Additional high grade intercepts
- Scalable, only 2.5% explored

Electro Metals Flagship Asset Magusi Project

Resource*	Tonnes	Copper %	Zinc %	Silver (g/t)	Gold (g/t)
Indicated	2,430,000	1.54%	3.53%	37.2 g/t	1.0 g/t
Inferred**	687,000	2.56%	0.46%	21 g/t	0.27 g/t

Excellent access to infrastructure, low-cost power at site and proximity to multiple mills + smelter within 100kms, a "brownfields project"

Initial focus on Magusi *resource expansion* and *new discoveries*, while preparing Little Stull for major drill campaign

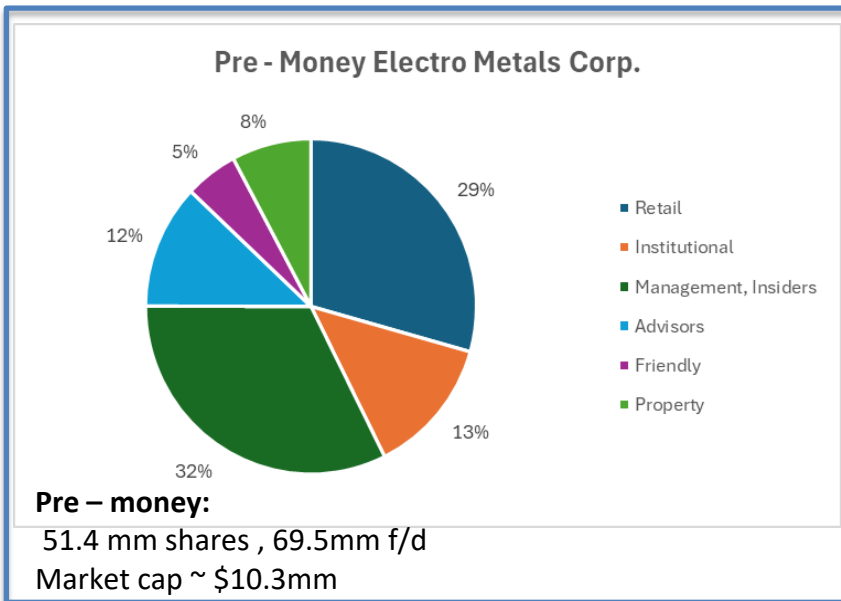
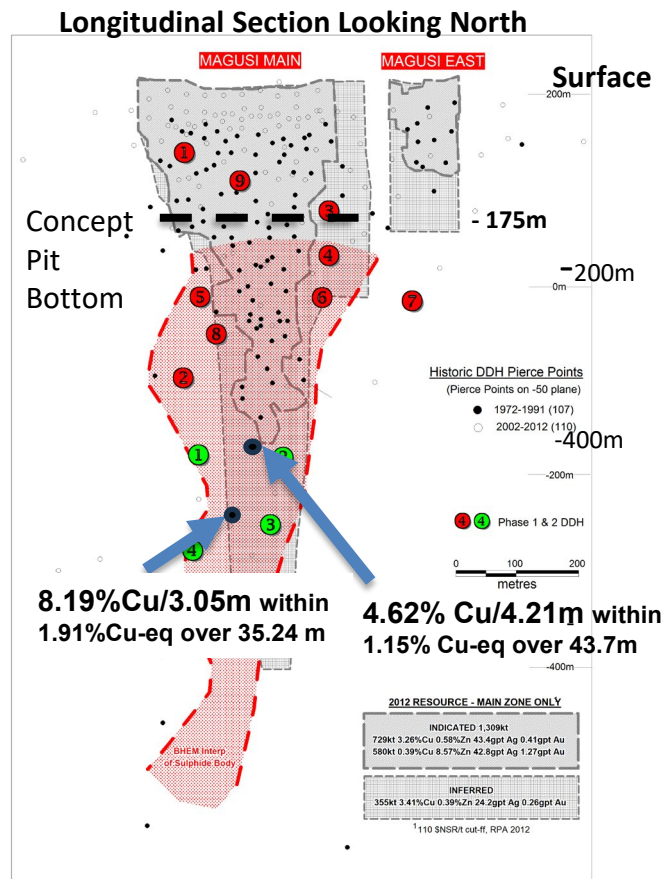
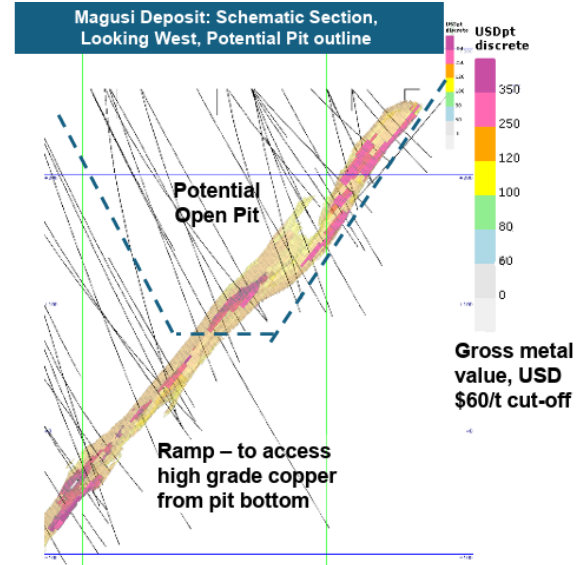
Simple Development Concept: Drill, blast, crush, ship

Prior history of mining and processing, demonstrates viability

Potential for deeper "Company Maker" discoveries is untested

Assets provide near – term exposure to high-grade copper cash flow, and long term optionality with high grade gold

Team brings extensive geologic expertise in metals exploration, resource development, mining and capital markets



For more information:

