



Spex•Crete™ 400

Description

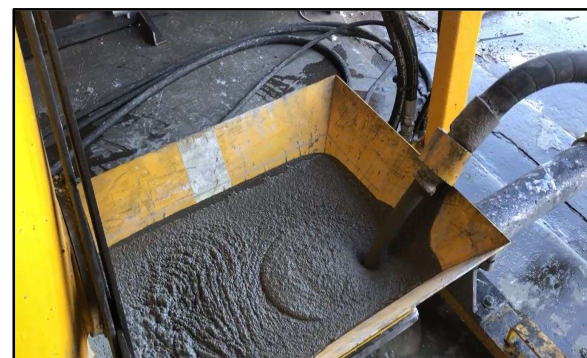
Spex•Crete™ 400 is a **pre-sanded, just add water**, Ultra Lightweight Polymer Modified Underlayment designed for deep fill applications and requires an overlay. Spex•Crete™ 400 provides a weight savings of ~65% as compared to traditional underlayments and gives you the competitive advantage for your commercial lightweight concrete projects.

Applications

- Indoor Deep Fill Flooring for High Rise Commercial and Residential Structures
- Lightweight Void Fill
- Great for Mass Timber Construction

Features

- **Yield per Bag is ~Triple** that of Traditional Underlayments
- ~65% Lighter than Traditional Underlayments
- Only ~3.5 pounds per square foot at 1"
- All-In-One: Pre-Sanded - Just Add Water
- Mix, Pump and Place with Ease
- Simple to Finish; Can be Sloped
- Can be Topped with an Overlay in 18 – 24 Hours
- Can be Poured Over Utilities Installed on the Floor
- Improved Logistics
- Better Worker Ergonomics



Pumping Spex•Crete™ 400



Spex•Crete™ 400 Topped with a Self-leveling Overlay

Technical Data	
Fresh Density	~47 – 49 pcf
Final Density	~40 – 44 pcf
Spread	~21 – 23"
Compressive Data	
1 Day	125 – 175 psi
7 Day	250 – 300 psi
28 Day	325 – 375 psi
Initial Set	300 – 400 minutes
Minimum Thickness	1"
Maximum Thickness	6"
Time to Top Coat	18 – 24 hours

Estimating Guide

Each Bag Covers Approximately:
 19 ft² at 1" Thickness
 9 1/2 ft² at 2" Thickness
 6 1/3 ft² at 3" Thickness

Packaging

~50 lb. (22.68 kg) Bags 33 Bags per Pallet

*Results are based on lab conditions. Field results may vary.



Spex•Crete™ 400

Directions

Preparing the Substrate: Inspect substrate to ensure floor is structurally sound and in good working condition. Remove all debris, unsound concrete, loose or broken surfaces, coatings, primers and/or sealing compounds. Patch holes and cracks as needed. Control and contraction joints must be maintained through Spex•Crete™ 400. Mark locations prior to pouring and cut once Spex•Crete™ 400 cures.

PRIMER IS REQUIRED: Follow recommended instructions on the container.

Mixing: Mix one ~50 pound (22.68 kg) bag to 9 – 10.5 quarts (8.5 – 9.9 L) of clean, cool, potable water. **DO NOT OVER WATER! DO NOT MIX PARTIAL BAGS OR IN A BUCKET.** Mix for approximately 2 – 6 minutes or until lightweight aggregate is incorporated into the slurry and the batch is consistent. Mixing conditions may vary depending on atmospheric conditions and the mixer / pump.

Pump/Place: Spex•Crete™ 400 can be pumped. Place using a gauge rake set to desired depth. Spiked roller the surface once desired depth is achieved. Use smoother for a less textured surface profile. Working time, cure time, pumping, handling and surface finish may be affected by temperature, humidity and other factors. Typical working time is 10 – 15 minutes. Once the Spex•Crete™ 400 is ready to accept overlay (required; typically after 18 – 24 hours), apply primer and overlay per manufacturer's requirements.

Cleanup: Clean all mixers, pumps and tools with water promptly after use. Dispose of contents/containers in accordance with local/regional/national regulations.

Limitations

- Do not mix a partial bag or in a bucket
- Do not install Spex•Crete™ 400 if the ambient temperature and or substrate temperature is below 50° F or above 90° F
- Do not apply to frosted or frozen surfaces or below grade
- Do not over water or retemper
- Exposure to direct sunlight and drafts should be avoided while mixing, placing and curing
- This product is formulated for Industrial and Commercial use only
- Keep out of reach of children

Packaging & Shelf Life

Spex•Crete™ 400 is packaged in ~2 cubic foot multiwall paper bags. The bag weight is ~50 pounds (22.68 kg). This product should be stored, handled and used in accordance with good industrial safety and hygiene practices and according to local regulations. This product should be stored indoors in dry conditions and is not to be stored outdoors or in direct contact with the ground. Humidity and moisture will affect the shelf life and performance of this product. Spex•Crete™ 400 has a shelf life of 6 months from date of manufacture.

SpexCrete Limited Warranty and Safety Information

SpexCrete warrants that this product, at the time of shipment, conforms to the specifications noted in the Technical Data section above. All other information provided in this Technical Data Sheet is to be used as guidance only and there are no warranties relating to the information which extend beyond the description on the face hereof. ALL OTHER WARRANTIES, INCLUDING WITHOUT LIMITATION THE WARRANTIES OF MERCHANTABILITY AND FITNESS FOR A PARTICULAR PURPOSE, ARE EXCLUDED. SpexCrete has a sole obligation and the sole and exclusive remedy under this limited warranty shall be the replacement of any defective product if justified by SpexCrete. No warranty is given for any technical advice or recommendations provided by SpexCrete. Buyer waives all claims under this limited warranty unless it has given written notice and proof of defect to SpexCrete within 15 days of delivery.

DANGER Harmful if swallowed. May cause an allergic skin reaction or burn, serious eye damage and/or respiratory irritation. This product may contain a chemical known to the state of California to cause cancer, or birth defects, or other reproductive harm. May cause damage to organs through prolonged or repeated exposure if inhaled.

Prevention Statement: Do not breathe dust/fume/gas/mist/vapor/spray. Wash hands and skin thoroughly after handling. Do not eat, drink or smoke while using this product. Mix outdoors or in a well-ventilated area. Contaminated work clothes should not be allowed out of the workplace. Wear protective gloves/protective clothing/eye protection/face protection. Response: **IF IN EYES:** Rinse cautiously with water for several minutes. Remove contact lenses, if present and easy to do. Continue to rinse. **IF SWALLOWED:** Rinse mouth. DO NOT induce vomiting. Immediately call a POISON CENTER/Doctor. **IF ON SKIN:** Immediately take off all contaminated clothing. Rinse skin with plenty of water or shower. Immediately call a POISON CENTER/Doctor. Wash contaminated clothing before reuse. If skin irritation or rash occurs: Get medical advice or attention. **IF INHALED:** Remove person to fresh air and keep comfortable for breathing. Call a POISON CENTER/Doctor if you feel unwell.

If exposed or concerned: Get medical advice/attention. **Repeat Exposure:** Get medical advice/attention if you feel unwell.

Disposal: Dispose of contents/container in accordance with local/regional/national regulations.