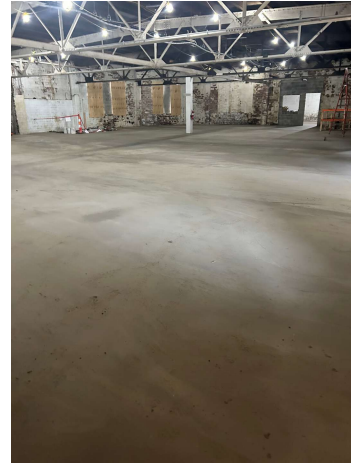
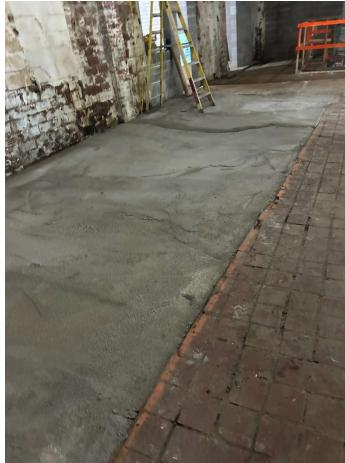


SPEX•CRETE™ Commercial Underlayments *Restore Your Subfloor™*



Lightweight Floor Levelup for High School Renovation

Purpose for Use: Ultra Lightweight Deep Fill
Floor Leveling

Location: Ohio

Leveling Products:

Spex•Crete™ 350 Super Set Ultra Lightweight
Spex•Crete™ Primer
USG Levelrock® 2500

Building Use: High School

Advantages

Spex•Crete™ 350 Super Set provided an ultra lightweight floor system that conformed and contoured to the uneven concrete subfloor to create a solid base for a gypsum leveler.

Spex•Crete™ Water Based Bonding Agent was applied to the concrete substrate.

Spex•Crete™ 350 Super Set was then barrel mixed and laid down to level up ~1½". It was then primed and capped using **USG Levelrock® 2500** at 1 ½".

A secondary benefit is Spex•Crete™ 350 Super Set dries faster than gypsum for a faster project timeframe.

