

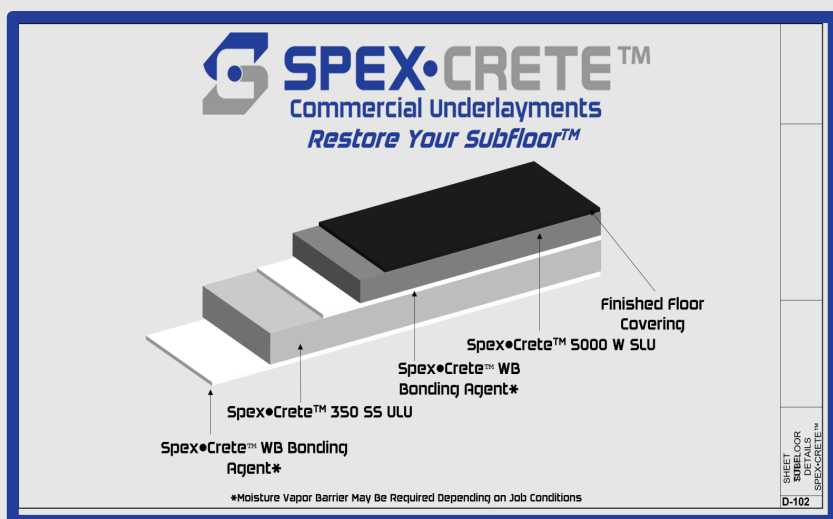


SPEX•CRETE

Commercial Underlayments



- **ULTRA LIGHTWEIGHT UNDERLAYMENTS**
- **SELF LEVELING UNDERLAYMENT**
- **WATER BASED BONDING AGENT**
- **LIGHTWEIGHT ADDITIVES**





SPEX•CRETE

Commercial Underlayments

Table of Contents

Page 3	Introduction
Page 4	Spex•Crete™ Product Offerings
Pages 5 - 6	Spex•Crete™ 350 Super Set ULU
Pages 7 - 8	Spex•Crete™ 5000 W SLU
Pages 9 - 10	Spex•Crete™ WB Bonding Agent
Pages 11 - 12	Spex•Crete™ G5 LWA
Pages 13 - 14	Spex•Lite® Lightweight Additives
Page 15	Applications
Page 16	Partners





SPEX•CRETE

Commercial Underlayments

Spex•Crete Commercial Underlayments deliver innovative solutions to the commercial flooring industry. Our proprietary and patent-pending technologies include Spex•Crete™ 350 Super Set ULU and Spex•Crete™ 5000 W SLU. Spex•Crete™ 350 SS is an ultra lightweight pumpable faster setting cementitious underlayment that is designed for deep fill flooring applications where strict weight parameters have been set. Spex•Crete™ 5000 W SLU, boasts high compressive and flexural strengths. This product is resistant to cracking and can be installed over gypsum.

Adding to our product list, Spex•Crete™ G5 Lightweight Additive is our new lightweight product that can decrease the weight of self leveling systems while maintaining similar performance characteristics.

At Spex•Crete, we take great pride in offering exceptional customer service, quality products and shipping support to the hard working contractors and installers across the country. If you need great underlayments delivered to your warehouse or job site, please give us a call at 440-462-1500 or email us at info@spexcrete.com!



Restore Your Subfloor™



SPEX•CRETE

Commercial Underlayments

Spex•Crete™ Commercial Underlayments Product Benefits

Spex•Crete™ 350 Super Set

- Ultra Lightweight 35 pcf, Fast Setting, Great for Deep Fill
- Pumps Easily at Wide Ranges of Thicknesses and Distances
- All-In-One; Just Add Water
- Unsurpassed Yield Per Truck, Up to ~20,520 sq ft at 1"
- ~ 40% Labor and Logistics Savings

Spex•Crete™ 5000 W SLU

- Wear Surface
- Shrinkage Compensated
- Self Curing
- Water Resistant
- Excellent Compressive and Flexural Strengths

Spex•Crete™ WB Bonding Agent

- VOC Compliant
- Water Based Bonding Agent
- Not Affected by Alkalinity of Portland Cement
- Ready to Use
- Bonds to New or Old Concrete, Wood, Gypsum

Spex•Crete™ G5 LWA

- Lightweight Sand Replacement
- Makes Pumpable Lightweight Self Levelers
- Helps With Excellent Compressive Strengths
- Provides Excellent Surface Profile
- Non-Toxic, Low Dust

Spex•Lite® 6724 LWA

- Proprietary Modified EPS Bead
- Mix With Portland Cement / Binders to Reduce Density
- Little To No Dust, No Silicosis
- Ultra Low Bulk Density; - 80x Lighter Than Sand



SPEX-CRETE™

350 Super Set ULU



Restore Your Subfloor™



SPEX•CRETE™

350 Super Set ULU

Description

Spex•Crete™ 350 Super Set is a **just add water**, Ultra Lightweight Underlayment designed for deep fill flooring applications where set time is critical. Spex•Crete™ 350 SS provides a weight savings of ~69% as compared to traditional underlayments and has a 35% improvement on initial set time as compared to Spex•Crete™ 350 ULU. This gives you the competitive advantage for your commercial lightweight concrete projects. Used as a deep fill replacement for EPS board or bead mixes, Spex•Crete™ 350 SS can easily be pumped and finished, saving both time and money on your next job.

Features

- **YIELD: ~20,520 square feet at 1" per truck!!!**
- **Improved Logistics and Operations**
- **~69% Lighter than Traditional Underlayments**
- **All-In-One: Just Add Water**
- Mix, Pump, and Place with Ease
- Simple to Finish; Can be Sloped
- Better Worker Ergonomics
- Improved Set Time

Applications

- Indoor Deep Fill Flooring for High Rise Commercial and Residential Structures
- Lightweight Void Fill
- Ideal for Fixing out of Level Floors
- Building/Flooring Restoration
- Mass Timber Construction
- Luxury Apartments / Condos

Limitations

- **FOR PROFESSIONAL USE ONLY**
- Do not mix a partial bag
- Do not install Spex•Crete™ 350 SS if the ambient temperature and or substrate temperature is below 50° F or above 90° F
- Do not apply to frosted or frozen surfaces or below grade
- Designed for interior use
- Do not over water or retemper
- Exposure to direct sunlight and drafts should be avoided while mixing, placing and curing
- This product is formulated for Industrial and Commercial use only
- **KEEP OUT OF REACH OF CHILDREN**

Technical Data*

Fresh Density	~38 – 42 pcf
Final Density	~34 – 39 pcf
Pounds / ft² at 1"	~3 pounds
Spread	~19 – 21"
Compressive Data 1 Day 28 Day	200 – 250 psi 400+ psi
Initial Set	~90 – 110 Minutes
Minimum Thickness	1"
Time to Topcoat	18 – 24 hours

*Results are based on lab conditions. Field results may vary.

**Coverage shown below is for estimating purposes only. Actual jobsite coverage may vary according to substrate conditions, type of equipment used, thickness applied, and application methods used

Estimating Guide

Each Bag Covers Approximately:
19 ft² at 1" Thickness
9 1/2 ft² at 2" Thickness
6 1/3 ft² at 3" Thickness

Packaging

~45 lb. (20.4 kg) Bags	45 Bags per Pallet
24 Pallets / Truck	1,080 Bags / Truck



SPEX•CRETE
Commercial Underlayments

Spex•Crete™ 5000 W
Self leveling
Underlayment



Restore Your Subfloor™



SPEX•CRETE™

5000 W SLU

Description

Spex•Crete™ 5000 W is a shrinkage-compensated, high-strength, self-leveling underlayment engineered as a floor resurfacer. The versatility of this just-add-water product allows floors to be re-levelled quickly due to its ability to be pumped or poured for easy installation. The labor savings using Spex•Crete™ 5000 W are significant. Another key feature is that this system requires little to no troweling, saving yet more time and making you more money on the jobsite.

Features

- **Wear Surface**
- Shrinkage-Compensated
- Self-Curing
- Self-Leveling
- Water Resistant
- Pumpable
- Excellent Compressive and Flexural Strengths
- Labor Savings Versus Non-pumpable Levelers

Applications

- Ideal for Fixing out of Level Floors
- Great for Mass Timber Construction
- Building Renovation
- Luxury Apartments / Condos
- Install over Concrete, Exterior Grade Plywood, Ceramic Tile, Terrazzo

Limitations

- FOR PROFESSIONAL USE ONLY
- Will not compensate for unstable substrates
- Imperfections in substrate may show through
- Deflection not to exceed L/360 of the span
- Do not install Spex•Crete™ 5000 W if the ambient temperature and or substrate temperature is below 40° F or above 90° F within 24 hours of pour
- Do not apply to frosted or frozen surfaces or below grade
- Do not over water or retemper
- Exposure to direct sunlight and drafts should be avoided while mixing, placing and curing
- This product is formulated for Industrial and Commercial use only
- **KEEP OUT OF REACH OF CHILDREN**

Technical Data*

Final Density	~125 - 128 pcf
Pounds / ft ² at 1"	~11 pounds
Flexural Strength	~1,000 psi
Compressive Data	
1 Day	~3,500 psi
7 Day	~4,500 psi
28 Day	~6,500+ psi
Flowing Time	~15 minutes
Working Time	~20 - 30 minutes
Light Foot Traffic	~4-8 hours
Minimum Thickness	1/4"
Maximum Thickness	1"
Color	Gray

*Results are based on lab conditions. Field results may vary.

**Coverage shown below is for estimating purposes only. Actual jobsite coverage may vary according to substrate conditions, type of equipment used, thickness applied, and application methods used

Estimating Guide

One Bag Covers ~13 ft² at 1/2" Thickness
Truckload Yield: ~11,200 ft² at 1/2" Thickness

Packaging

~50 lb. (22.67 kg) Bags	48 Bags per Pallet
18 Pallets / Truck	864 Bags / Truck





SPEX•CRETE

Commercial Underlayments

Spex•Crete™ WB Bonding Agent



Don't forget the primer!



SPEX•CRETE™

WB Bonding Agent

Description

Spex•Crete™ WB Bonding Agent is an architectural grade, water-based emulsion formulated for bonding cement-based products to interior, structurally sound masonry and concrete surfaces.

Features

- VOC compliant
- Allows overlays to be applied as soon as dry to the touch (~1 hour) or delayed for up to 7 days
- Ready to use, no site dilution
- May be applied over damp or dry substrate
- Non-toxic, non-flammable and non-staining
- Bonds to new or old concrete, masonry, wood, marble, gypsum board
- Unaffected by alkalinity of Portland Cement
- Retains strength and flexibility indefinitely
- Improves tensile and shear strengths
- Unaffected by severe heat / cold (-35° F – 300° F)
- Thick, non-run formula
- Dries clear
- Provides better adhesion to old or new concrete surfaces for patching, grouting, or coating

Applications

- Subfloor Prep
- Cement mixes to concrete, wood, gypsum substrates
- Mass Timber Construction
- Building / Flooring Restoration
- Luxury Apartments / Condos

Limitations

- **DO NOT DILUTE**
- Do not apply over frozen concrete or any substrate where frost is present.
- Do not use or apply when temperature is below 40° F or will fall below 40° F within 24 hours.
- Do not allow material to freeze.
- Do not apply where constant moisture is present as in concrete ceiling areas subject to wetting from above.
- Do not use in areas subject to immersion in water such as pools.
- **KEEP OUT OF REACH OF CHILDREN**

Technical Data*

Density	~8.7 pounds/gal
pH	4.5 – 6.0
VOC Compliant	YES
Water Based	YES
Color	Milky White; Dries Clear

*Results are based on lab conditions. Field results may vary.

**Coverage shown below is for estimating purposes only. Actual jobsite coverage may vary according to substrate conditions, type of equipment used, thickness applied, and application methods used.

Estimating Guide

Each 5 Gallon Pail Covers ~750 – 1,500 square feet

Packaging

5 Gallon Pails	36 Pails / Pallet
----------------	-------------------



SPEX•CRETE
Commercial Underlayments

Spex•Crete™ GS Lightweight Additive



Description

Spex•Crete™ G5 Lightweight Additive is a patent pending proprietary modified mineral based microbead product that is used as a **sand replacement** to decrease the density of self leveling underlayments. This unique non-toxic particle provides **excellent compressive strengths** and workability when added to calcium aluminate, cementitious and gypsum-based products. Spex•Crete™ G5 Lightweight Additive blends very well into self leveling underlayments and provides a homogeneous mix that can be **pumped, placed and finished with ease**.



Physical Properties

Softening Temperature	~1,580 – 1,920°F
Melting Point	~1,920 – 2,280°F
Color	Off – White
pH	~6.5 – 8
Surface Moisture	<0.2 mass %
Particle Shape	Sphere/egg
Mohs Scale	~5.5 – 7.0

Technical Data

Property	Unit of Measure	Value
Average Particle Size	μm	~150 – 175
Loose Bulk Density	lb/ft ³	~18.5
Specific Gravity	g/cm ³	~0.54
Thermal Conductivity	W/(mK)	~0.072 – 0.007
Mechanical Crush Strength	PSI	~315
Isostatic Particle Strength	PSI	~1,000

SpexCrete warrants that this product, at the time of shipment, conforms to the specifications noted in the Technical Data section above. All other information provided in this Technical Data Sheet is to be used as guidance only and there are no warranties relating to the information which extend beyond the description on the face hereof. ALL OTHER WARRANTIES, INCLUDING WITHOUT LIMITATION THE WARRANTIES OF MERCHANTABILITY AND FITNESS FOR A PARTICULAR PURPOSE, ARE EXCLUDED. SpexCrete has a sole obligation and the sole and exclusive remedy under this limited warranty shall be the replacement of any defective SpexCrete product at cost if justified by SpexCrete. No warranty is given for any technical advice or recommendations provided by SpexCrete. Buyer waives all claims under this limited warranty unless it has given written notice and proof of defect to SpexCrete within 15 days of delivery. For more information, visit www.SpexCrete.com.



Spex•Lite® Lightweight
Additives



Spex•Lite® Lightweight Additives

Spex•Lite® Ultra Lightweight Filler Beads are ideally suited to decrease weight in concrete underlayments, blends and products. While primarily used in flooring underlayments and self-leveling underlayments (SLUs), Spex•Lite® Ultra Light Filler Beads can also be used for controlled low-strength material (CLSM), concrete masonry units (CMU), decorative concrete, concrete countertops and more!

- Proprietary Modified EPS Bead
 - Mix With Portland Cement
 - Little To No Dust, No Silicosis
 - ~80x Lighter Than Sand



Spex•Lite® 6724

- ~1.1 pcf
- ~1.6 mm in size



Spex•Lite® 6503

- ~0.80 pcf
- ~3.0-3.5 mm in size

For a Formulating Consultation, Call 440-462-1500!



SPEX•CRETE

Commercial Underlayments

Applications

The Spex•Crete™ Lightweight Flooring System is designed for use in weight restriction flooring applications. Perfect for renovation work, you can use Spex•Crete™ 5000 W SLU to level uneven floors. If you need an ultra lightweight underlayment for deep fill applications, simply install Spex•Crete™ 350 SS ULU prior to installing Spex•Crete™ 5000 W SLU.



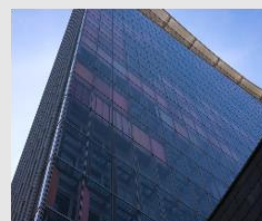
Dorms



Mixed Use/Multi Family



High Rise



Corporate Offices



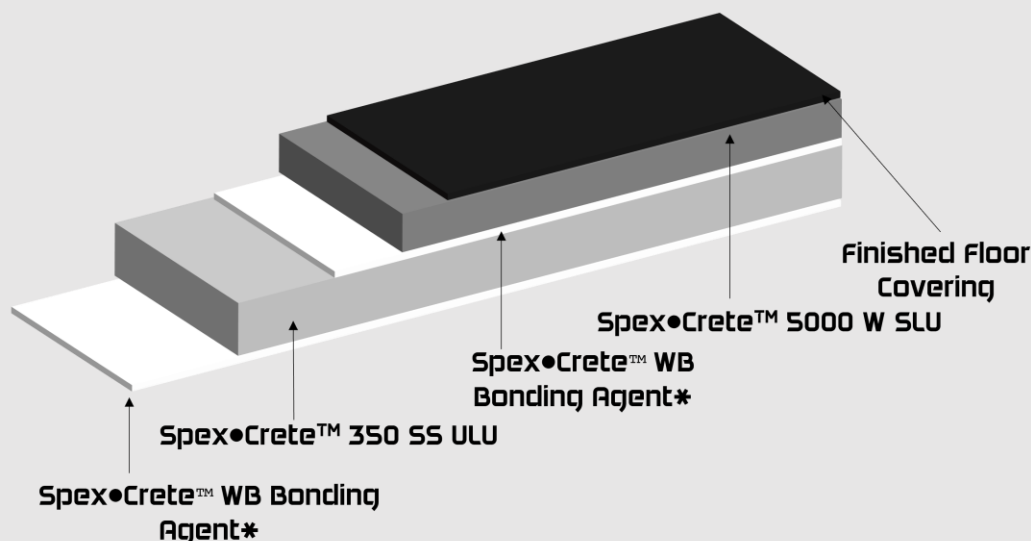
Hotels



SPEX•CRETE™

Commercial Underlayments

Restore Your Subfloor™



*Moisture Vapor Barrier May Be Required Depending on Job Conditions

SHEET
SUBFLOOR
DETAILS
SPEX•CRETE™
D-102

Call Today 440-462-1500



SPEX-CRETE
Commercial Underlayments

Partners





SPEX•CRETE

Commercial Underlayments

Spex•Crete Commercial Underlayments
29299 Clemens Rd. Unit 1-L
Westlake, OH 44145

*The above information is for reference only. Spex•Crete™ warrants that this product, at the time of shipment, conforms to the specifications noted in the Technical Data section above. All other information provided in this Technical Data Sheet is to be used as guidance only and there are no warranties relating to the information which extend beyond the description on the face hereof. ALL OTHER WARRANTIES, INCLUDING WITHOUT LIMITATION THE WARRANTIES OF MERCHANTABILITY AND FITNESS FOR A PARTICULAR PURPOSE, ARE EXCLUDED. Spex•Crete™ has a sole obligation and the sole and exclusive remedy under this limited warranty shall be the replacement of any defective Spex•Crete/Spex•Lite® product if justified by Spex•Crete™. No warranty is given for any technical advice or recommendations provided by Spex•Crete™. Buyer waives all claims under this limited warranty unless it has given written notice and proof of defect to Spex•Crete™ within 15 days of delivery. Visit SpexCrete.com for more.