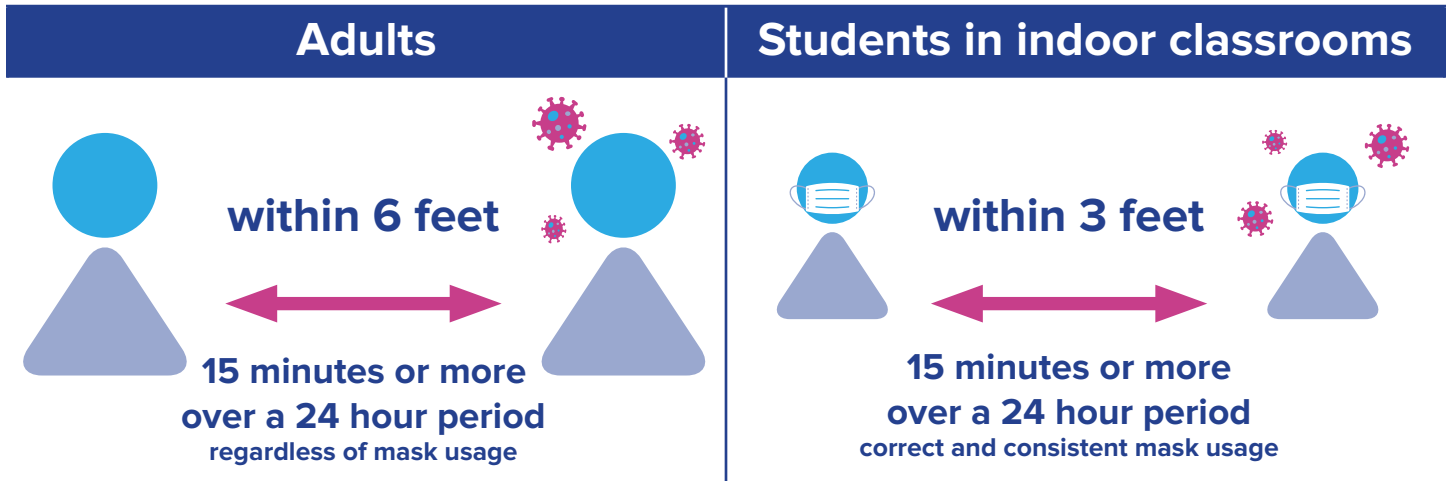
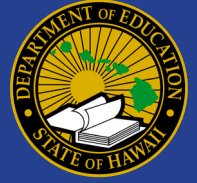
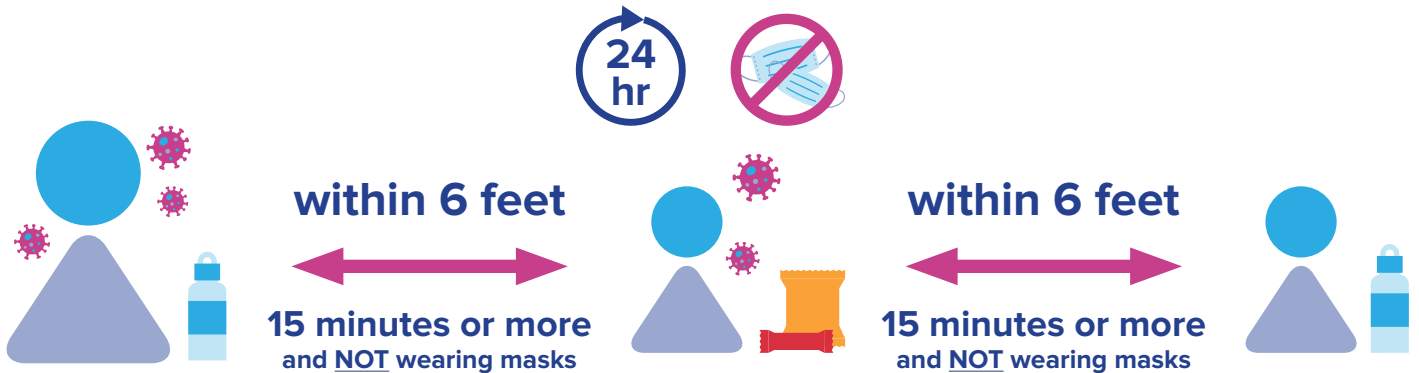


WHEN CLOSE CONTACTS ARE IDENTIFIED AT SCHOOL



Cafeterias or indoor rooms (e.g. breakrooms, classrooms)

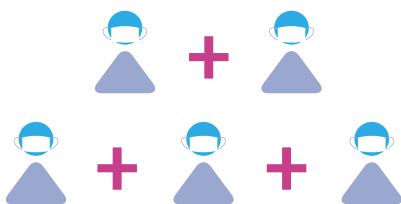
A close contact is any adult or student who was within 6 feet of a person with COVID-19 infection for 15 minutes or more over a 24-hour period where people were eating and drinking and not wearing masks.



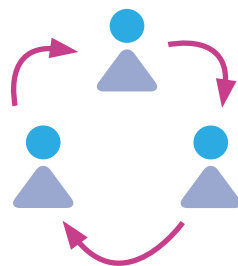
All-class close contact situations

Examples where all persons in the class would be considered close contacts.

Cohorts in classrooms that spend the entire day together and interact with others within the cohort (typically younger grade levels).



Classrooms that do not have assigned seats and/or students are frequently moving around in class.



Cohorts that engage in activities that may increase the risk of transmission while indoors (e.g., eating and drinking, singing, playing brass or woodwind musical instruments).

