

W
S
D
A
C



WESTERN STYLE DRESSAGE
ASSOCIATION OF CANADA

2021 RULEBOOK

WESTERN DRESSAGE RULES ©
Copyright Western Style Dressage Association of Canada 2021

TABLE OF CONTENTS

WSD 1 STANDARDS AND OBJECTIVES.....	7
WSD 1.01 Standard of Western Dressage	7
WSD 1.02 Objective of Western Dressage	7
WSD 2 GAITS AND PACES	8
WSD 2.01 Overview	8
WSD 2.02 Walk	8
WSD 2.03 Jog.....	9
WSD 2.04 Saddle Gait	9
WSD 2.05 Lope	10
WSD 3 MOVEMENTS	11
WSD 3.01 Halt.....	11
WSD 3.02 Rein Back.....	11
WSD 3.03 Counter-Lope	11
WSD 3.04 Change of Lead through the Jog	12
WSD 3.05 Simple Change of Lead (through the Walk)	12
WSD 3.06 Flying Change	12
WSD 3.07 Release of Rein	12
WSD 3.08 Leg-Yield	13
WSD 3.09 Shoulder-In.....	13
WSD 3.10 Haunches-In.....	14
WSD 3.11 Haunches-Out.....	14
WSD 3.12 Half-Pass.....	14
WSD 3.13 Zig-Zag	15
WSD 3.14 Turn on the Forehand	15
WSD 3.15 Turn on the Haunches	15

WSD 3.16	Walk Pirouette.....	16
WSD 3.17	Working Half-Pirouette in Very Collected Lope	16
WSD 4	TACK AND EQUIPMENT.....	17
WSD 4.01	Bridles	17
WSD 4.02	Snaffle Bits.....	17
WSD 4.03	Overview of Curb Bits	18
WSD 4.04	Transitional Curbs.....	19
WSD 4.05	Fixed Shank Curbs	19
WSD 4.06	Two Rein or Spade Bits	19
WSD 4.07	Illegal Bits and Bridles.....	19
WSD 4.08	Bosals	21
WSD 4.09	Reins	21
WSD 4.10	Saddles	22
WSD 4.11	Whips	22
WSD 4.12	Optional Equipment	22
WSD 4.13	Illegal Equipment	22
WSD 4.14	Tack in Warm-Up Ring and Training Areas.....	24
WSD 4.15	Tack Inspection.....	24
WSD 5	PARA RIDERS.....	25
WSD 5.01	Definition	25
WSD 5.02	Accommodation for Physical Disability	25
WSD 5.03	Dispensation Certificate	25
WSD 5.04	Applying for a Dispensation Certificate.....	25
WSD 6	ATTIRE.....	26
WSD 6.01	Required Attire	26
WSD 6.02	Optional Attire	26

WSD 7 FIGURES.....	27
WSD 7.01 Figures	27
WSD 7.02 Arena Dimensions.....	28
WSD 8 TRANSITIONS AND CHANGES OF DIRECTION	29
WSD 8.01 Transitions.....	29
WSD 8.02 Changes of Direction	29
WSD 9 WESTERN DRESSAGE TESTS	30
WSD 9.01 Tests for Western Dressage Competitions	30
WSD 9.02 Purpose of the Levels	30
WSD 9.03 Advancement of Levels Chart.....	31
WSD 10 COLLECTIVE MARKS	32
WSD 10.01 Collective Marks.....	32
WSD 10.02 Gaits.....	32
WSD 10.03 Impulsion and Energy	32
WSD 10.04 Rider Position and Communication	32
WSD 10.05 Accuracy	33
WSD 10.06 Compliance	33
WSD 11 EXECUTION AND JUDGING OF TESTS.....	34
WSD 11.01 Calling Tests	34
WSD 11.02 Salute	34
WSD 11.03 Voice and Touch	34
WSD 11.04 Judging a Test.....	34
WSD 11.05 Points Awarded.....	36
WSD 11.06 Errors	37
WSD 11.07 Elimination.....	38
WSD 12 COMPETITIONS.....	40

WSD 12.01	Eligibility in competition.....	40
WSD 12.02	Divisions for purposes of competition	40
WSD 13 COMPETITION MANAGEMENT.....		43
WSD 13.01	Scoring, Classification and Prize-Giving.....	43
WSD 13.02	Requirements for Competition Management.....	44
WSD 13.03	Competition Schedule.....	45
WSD 13.04	Entering the ring prior to ride	45
WSD 13.05	Judges.....	45
WSD 13.06	Scribes	45
WSD 13.07	Arena Specifications	46
WSD 13.08	Protests:.....	46
WSD 14 PERIPHERAL CLASSES.....		47
WSD 14.01	Overview of Peripheral Classes.....	47
WSD 14.02	Freestyle	47
WSD 14.03	Ride-Ability.....	48
WSD 15 WSDAC JUDGES.....		49
WSD 15.01	Judges for Sanctioned Competitions.....	49
WSD 15.02	Types of Cards.....	49
WSD 15.03	Conflict of Interest Policy	50
WSD 16 WSDAC SHOW PROGRAMS.....		51
WSD 16.01	National Points Program.....	51
WSD 16.02	Lifetime Horse Performance Programs	51
WSD 16.03	Sanctioned Shows	52
WSD 16.04	Virtual Sanctioned Shows.....	53
WSD 17 AFFILIATE STRUCTURE.....		56
WSD 17.01	Overview of Regional Chapter Structure	56

WSD 17.02 Purpose of Regional Chapters.....56

WSD 17.03 Affiliation outside of Canada56

WSD 18 RULE CHANGE PROCEDURES 57

WSD 18.01 Rule Change Procedures.....57

WSD 18.02 Rule Change Process57

NOTES: 58

WSD 1 STANDARDS AND OBJECTIVES

WSD 1.01 Standard of Western Dressage

- 1) A responsive, confident, willingly guided horse that performs all the required gaits correctly with strength and finesse shall be awarded optimum marks.
- 2) An ideal Western Dressage horse has a ground-covering stride of reasonable length in keeping with the individual's conformation. Ideally, the horse should have a balanced movement that requires no more than light contact by the rider.
- 3) The head and neck are carried in a relaxed, natural position appropriate for each individual horse's conformation and level of training.
- 4) The hindquarters display activity and engagement in all movements.
- 5) The horse and rider are seen to work in unison and harmony.

WSD 1.02 Objective of Western Dressage

- 1) The objective of Western Dressage is the correct development of the horse to meet the standard in WSD 1.01 resulting in an athlete that is a pleasure to ride, and works in harmony with the rider. The result of this training is a horse that is calm, supple, loose, balanced and flexible. The horse is also confident and willing to perform the correct basics with little effort.
- 2) The quality of this training is seen in:
 - a) The freedom and regularity of the gaits.
 - b) The harmony, lightness and ease of the movements.
 - c) The lightness of the forehand and the engagement of the hindquarters.
 - d) The acceptance of light contact with the bit, with compliance without any tension or resistance in accordance with the level of training.
- 3) The horse gives the impression of doing, of its own accord, what is required. The horse is confident and attentive, accepting the aids of the rider.

WSD 2 GAITS AND PACES

WSD 2.01 Overview

- 1) The gaits in western dressage are walk, jog, and lope.
- 2) The “saddle gait” replaces the “jog” in tests when performed by gaited horses.

WSD 2.02 Walk

- 1) The walk is a well-marked four beat marching gait in a regular cadence and with equal intervals between each beat. This regularity combined with full relaxation must be maintained throughout all walk movements.
- 2) When the foreleg and the hind leg on the same side swing forward almost at the same time, the walk has a lateral rhythm. This irregularity is a serious fault of the gait.
- 3) The following paces at the walk are recognized:
 - a) Working Walk - A clear, regular and unconstrained walk of moderate length. The horse walks energetically but relaxed with even and determined steps. The rider maintains a light, soft, and steady contact with the mouth, allowing the natural movement of the head and neck. The horse’s nose should be slightly in front of the vertical and the poll is at the highest point.
 - b) Free Walk - The free walk is a pace of relaxation in which the horse is allowed complete freedom to lower and stretch out his head and neck. The horse should maintain the same rhythm and tempo as the working walk, but is asked to stretch forward, down and into the contact. The poll should be lower than the withers with the nose well in front of the vertical. The amount of ground covered and the length of strides, are essential to the quality of the free walk.
 - c) Lengthening of Stride at the Walk - Without rushing, and with good balance, the horse goes freely forward with increased ground cover in the same tempo as the working walk. The horse’s nose should be slightly in front of the vertical and the poll is at the highest point.
 - d) Collected Walk - The horse, remaining in acceptance of contact, moves resolutely forward with uphill tendency showing clear self-carriage. The head approaches the vertical position and a light contact is maintained and the poll is at the highest point. The hind legs are engaged with good flexion of the joints. The step at the collected walk is shorter than at the working walk and shows greater activity while maintaining regular sequence.

WSD 2.03 Jog

- 1) The jog is a two-beat gait of alternating diagonal legs separated by a moment of lift to create the two beat gait. The jog should show free, active and regular steps.
- 2) The quality of the jog is judged by the regularity and cadence of steps.
- 3) Excessive speed or slowness shall be penalized.
- 4) The following paces at the jog are recognized:
 - a) Working Jog - The horse displays proper balance with lightness and moves forward with even and defined steps. The horse's nose should be slightly in front of the vertical and the poll is at the highest point. The working jog may be ridden either posting or sitting.
 - b) Free Jog - The horse maintains the same rhythm and tempo as the working jog, but the horse is asked to stretch forward, down and into the contact. The poll should be lower than the withers with the nose well in front of the vertical. The free jog may be ridden either posting or sitting.
 - c) Lengthening of Stride at the Jog - Without rushing, and with good balance, the horse goes freely forward with increased ground cover in the same tempo as the working jog. The horse's nose should be slightly in front of the vertical and the poll is at the highest point. Lengthening of stride at the jog may be ridden either posting or sitting with exception of Level 3 and above, which must be ridden sitting.
 - d) Collected jog - The horse, remaining in acceptance of contact, moves forward in a two-beat gait with uphill tendency showing clear self-carriage. The head approaches the vertical position and a light contact is maintained and the poll is at the highest point. Although the horse's steps are shorter than in the other jogs, lightness and cadence are not lessened. The collected jog must be ridden sitting.

WSD 2.04 Saddle Gait

- 1) The saddle gait may be either a lateral or diagonal gait. The tempo, rhythm and foot falls of the gait the rider chooses to perform must not change throughout the test. The gait the horse performs, should be able to be ridden in a working, lengthened, free, and collected manner as the Test being ridden specifies.
- 2) The quality of the saddle gait is judged by the regularity and rhythm of the steps. This quality originates from the horse having a supple back and well engaged hind quarters, and the ability to maintain the same rhythm and natural balance in all variations of the saddle gait.
- 3) Excessive speed or slowness will be penalized.

- 4) The following paces at the Saddle Gait are recognized:
 - a) Working Saddle Gait - The horse must go forward with consistent rhythm. The horse must show proper balance and maintain light contact. The horse's nose should be slightly in front of the vertical and the poll is at the highest point.
 - b) Free Saddle Gait - The horse maintains the same rhythm and tempo as the working saddle gait, but is asked to stretch forward, down and into the contact. The poll should be lower than the withers with the nose in front of the vertical.
 - c) Lengthening of Stride at the Saddle Gait - Without rushing, and with good balance, the horse goes freely forward with increased ground cover in the same tempo as the working saddle gait. The horse's nose should be slightly in front of the vertical and the poll is at the highest point.
 - d) Collected Saddle Gait - The horse, remaining in acceptance of contact, moves forward in the gait with uphill tendency showing clear self-carriage. The head approaches the vertical position and a light contact is maintained and the poll is at the highest point. Although the horse's steps are shorter than in the other Saddle Gaits, lightness and cadence are not lessened.

WSD 2.05 Lope

- 1) The lope is a three-beat gait with a moment of lift before the next stride begins.
- 2) The quality of the lope is judged by the regularity and lightness of the steps. Cadence originates from the acceptance of the contact with a supple poll and the engagement of the hindquarters.
- 3) Excessive speed or slowness must be penalized.
- 4) The following paces at the lope are recognized:
 - a) Working Lope - The horse shows balance while remaining in acceptance of the contact with lightness and goes forward with even and active strides. The quality of the working lope originates from a supple back, well-engaged hindquarters, and the ability to maintain the same rhythm and natural balance. The horse's nose should be slightly in front of the vertical and the poll is at the highest point.
 - b) Free Lope - The horse maintains the same rhythm and tempo as the working lope, but is asked to stretch forward, down and into the contact. The poll should be lower than the withers with the nose in front of the vertical.
 - c) Lengthening of Stride at the Lope - Without rushing, and with good balance, the horse goes freely forward with increased ground cover in the same tempo as the working lope. The horse's nose should be slightly in front of the vertical and the poll is at the highest point.
 - d) Collected Lope - The horse, remaining in acceptance of contact, moves forward in a three-beat gait with uphill tendency showing clear self-carriage. The head approaches the vertical position and a light contact is maintained and the poll is at the highest point. Although the horse's steps are shorter than in the other lopes, lightness and cadence are not lessened.

- e) Very Collected Lope – The purpose of the very collected lope is to prepare the horse for the working half-pirouette. The horse should demonstrate clear collected strides of the lope that have the appearance of upward steps while maintaining the three beat footfall of the lope. The horse's hocks are engaged and the balance of the horse enables the forehand to be light. The poll is at the highest point and the face of the horse nears vertical.

WSD 3 MOVEMENTS

WSD 3.01 Halt

- 1) At the halt the horse should stand attentive, engaged, motionless, with the weight evenly distributed over all four legs. The squareness of the halt will increase at the higher levels with the advancement of training. The poll should be the highest point and the nose slightly in front of the vertical. The horse should be ready to move off at the slightest indication of the rider.
- 2) The halt is a minimum of four (4) seconds of immobility.
- 3) The quality of the gaits before and after the halt is an important part of the scoring of the halt movement.

WSD 3.02 Rein Back

- 1) The rein back is a rearward diagonal movement with a two-beat rhythm. Each diagonal pair of legs is raised and returned to the ground alternately, with the forelegs aligned on the same track as the hind legs. The horse should appear to carry more of its weight on the hind legs with the hind end lower than the front.
- 2) The steps are counted as each foreleg moves back.
- 3) The horse should remain relaxed and accepting of the bridle.
- 4) Anticipation of the movement, resistance to or evasion of the contact, deviation of the hindquarters from the straight line, spreading or inactive hind legs and dragging forefeet are serious faults.

WSD 3.03 Counter-Lope

- 1) The counter lope is a balancing and collecting movement.
- 2) The horse is loping on the opposite lead to the direction of travel. The horse maintains a slight flexion in the direction of the lead.

WSD 3.04 Change of Lead through the Jog

- 1) The horse is brought back into the jog from the lope and within (3-5) jog strides develops the lope on the opposite lead.

WSD 3.05 Simple Change of Lead (through the Walk)

- 1) The horse is brought back into the walk from the lope and within (3-5) walk strides develops the lope on the opposite lead.

WSD 3.06 Flying Change

- 1) The flying change is executed at the collected lope. The horse changes from one leading leg to the other. Failing to cleanly change from one lead to the other is a serious fault as are becoming disunited, changing with the front or hind leg first and then developing the new lead, or taking a half step in jog to execute the flying change.
- 2) Flying changes performed in a sequence with a specified or un-specified number of strides between the flying changes. Flying changes of leg can be executed in a series of un-specified strides, or every 4th or 3rd stride. The horse remains light, calm and straight with lively impulsion, maintaining the same rhythm and balance throughout the series. In order not to restrict or restrain the lightness, fluency and ground cover of the flying changes in series, enough impulsion must be maintained.

WSD 3.07 Release of Rein

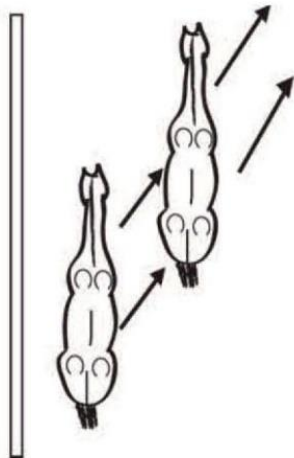
- 1) Release of rein may be asked for at the collected jog, collected saddle gait, or collected lope.
- 2) The rider shows a clear release of contact while the horse maintains rhythm, tempo and quality of the gait.
- 3) Release of rein demonstrates self-carriage and is not a free gait.

WSD 3.08 Leg-Yield

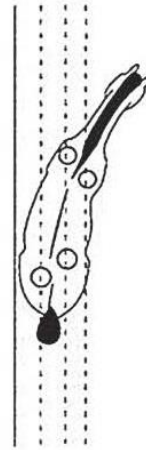
- 1) The horse is almost straight, except for a slight flexion at the poll away from the direction of movement. The inside legs pass and cross in front of the outside legs. A leg-yield is performed on the diagonal in which case the horse should be almost parallel to the long sides of the arena although the forehand should be slightly in advance of the hindquarters.

WSD 3.09 Shoulder-In

- 1) The horse is ridden with a slight but uniform bend around the inside leg of the rider maintaining an angle of approximately 30 degrees. The horse's inside foreleg passes in front of the outside foreleg; the inside hind leg steps forward under the horse's body weight following the same track of the outside foreleg. The horse's footfalls create three tracks.



Leg Yield



Shoulder-In

WSD 3.10 Haunches-In

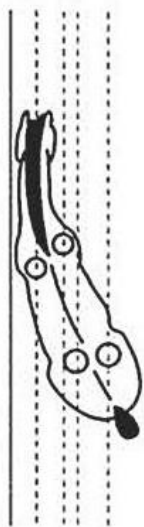
- 1) The forehand remains on the track and the hindquarters are moved inwards. The horse is bent in the direction in which it is moving. At the end of the haunches-in, the hindquarters are brought back on the track without any counter-flexion of the poll/neck, as one would finish a circle. The horse's footfalls create three to four tracks.

WSD 3.11 Haunches-Out

- 1) The hindquarters remain on the track while the forehand is displaced to the inside. The horse is slightly bent around the inside leg of the rider. To complete the haunches-out, the forehand is aligned with the hindquarters on the track. Balance and rhythm of gait are maintained.

WSD 3.12 Half-Pass

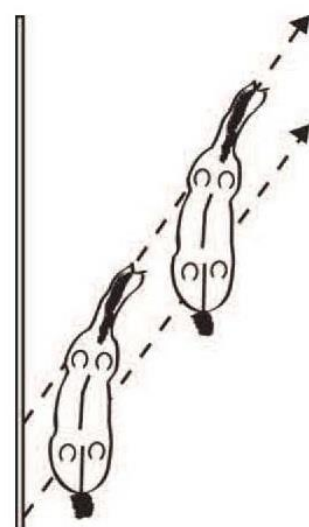
- 1) This movement is a variation of haunches-in, executed on a diagonal line instead of along the wall, and performed at the collected jog or lope. The horse should be slightly bent around the inside leg of the rider in the direction in which it is moving. The horse should maintain the same cadence and balance as the collected jog or lope. The forehand must be slightly leading.



Haunches-In



Haunches-Out



Half-Pass

WSD 3.13 Zig-Zag

- 1) A zig-zag is a half-pass performed either at collected jog or collected lope in which the horse takes steps in one direction and then in the other direction. At the lope the change in direction will incur a flying change.

WSD 3.14 Turn on the Forehand

- 1) The turn on the forehand is executed out of a halt or working walk. The hind legs must move around the forelegs. The horse must bend slightly in its ribcage around the rider's inside leg. The turn on forehand can be executed on a diameter of up to 1 metre. The horse must maintain the same rhythm, contact, activity and straightness of movement and proceed immediately in working walk. Stepping back is a serious fault.

WSD 3.15 Turn on the Haunches

- 1) The turn on the haunches is executed out of the shortened working walk.
- 2) There are two methods of performing a turn on the haunches. Both methods must be judged equally, however switching from one method to the other during a test is not allowed. The two methods are as follows:
 - a) The turn on the haunches is executed on a circle with a diameter of up to 1 metre as measured by the track of the inside hind leg. The forelegs and outside hind leg must inscribe the circle around the inside hind leg while maintaining the rhythm of the walk.
 - b) The turn on the haunches is executed with the horse pivoting the inside hind leg and stepping around it with the outside hind leg. The horse pushes off with the outside hind leg. The pivot leg is allowed to pick up and reset when it reaches the point of stress.
- 3) Backward movement in both methods of the turn on the haunches is a serious fault.

WSD 3.16 Walk Pirouette

- 1) A Walk Pirouette is the advanced level movement of the Turn on the Haunches. The Walk Pirouette is asked from the collected walk and executed in a smaller diameter of the inside hind leg scribing a circle. The Walk Pirouette may be executed as half, full, or one and a half revolutions.

WSD 3.17 Working Half-Pirouette in Very Collected Lope

- 1) The working half-pirouette in very collected lope is a turn of 180 degrees executed on two tracks, with the forehand moving around the haunches. The hind legs of the horse should be scribing a half circle size of approximately three meters.
- 2) In executing the working half-pirouette in very collected lope, the horse should maintain lightness while accentuating the collection. The horse's hindquarters are well engaged and lowered and show a good flexion of the joints. An integral part of the movement is the quality of the lope strides before and after the half-pirouette. The strides should show increase in activity and collection before the half-pirouette, and the balance should be maintained at the end of the movement.
- 3) A working half-pirouette is to be judged giving full credit for a well performed half-pirouette with execution as detailed in WSD 3.17 2. A well performed larger than three metre half-pirouette should also receive full credit. A significant deduction should be made if a rider attempts a regular half-pirouette, but performs it poorly.

WSD 4 TACK AND EQUIPMENT

WSD 4.01 Bridles

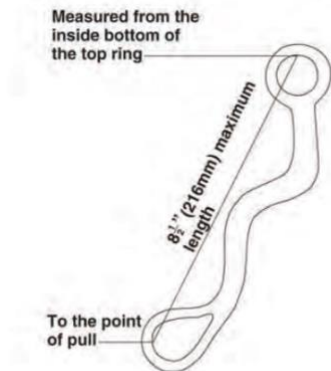
- 1) Any western type headstall may be used. A headstall is defined as a leather or leather like item to carry a bit.
- 2) Snaffle, bosal, hackamore (not mechanical), or bitless bridles may be used at any level of competition by any horse of any age.

WSD 4.02 Snaffle Bits

- 1) The rider must use two (2) hands with a snaffle bit.
- 2) A standard snaffle is a conventional O-Ring, Egg Butt, Full Cheek or D-Ring, all with rings having an inside diameter no smaller than 2 inches (5.08 cm), nor larger than 4 inches (10.16 cm). Other types of snaffle bits not mentioned above such as hanging cheek snaffles or Baucher snaffles are legal and are not considered to be leverage bits. Bits such as the Myler snaffle or Kimberwick which have slots for both the reins and the cheek pieces are permitted.
- 3) Bars: Bars of the mouthpiece must be round, oval or egg shaped, smooth and unwrapped, except with latex; and no less than 5/16 inch (0.79 cm) to ¾ inch (1.91 cm) in diameter measured one inch (2.54 cm) from the cheek. May be inlaid if smooth. The mouthpiece may be single (Mullen, barrel, or ported), two or three pieces. Plastic mouth, and rubber coated bits are permitted.
- 4) Three-Piece Mouthpiece: If a mouthpiece is three pieces, a connecting link must be no larger than 1 1/4 inches (3.18 cm) in diameter, or a connecting flat bar must be no longer than 2 inches (5.08 cm), 3/8 inch (0.95 cm) to ¾ inch (1.91 cm), measured top-to-bottom, and must lie flat in the horse's mouth.
- 5) The port of any snaffle bit must be no higher than 1 1/4 inches (3.18 cm).
- 6) Bit hobbles below the reins are permitted.
- 7) On snaffle bits that have slots for the reins a chin strap or curb chain is permitted above the reins provided it complies with WSD 4.03 (5).

WSD 4.03 Overview of Curb Bits

- 1) A curb bit is a leverage bit and may have loose or fixed shanks (Spade bits are discussed in WSD 4.06).
- 2) The maximum length of the shanks on any curb bit is 8.5 inches (21.59 cm).



- 3) Curb bits must be made of smooth metal and may or may not have a cricket mouth piece. Curb bits must connect directly from the cheek piece to the mouth piece. No curbs may have a double fulcrum effect. The shank when pulled back against the tightened curb strap cannot be less than a 45 degree angle to the bottom of the lower jaw.
- 4) All curb bits must be free of mechanical devices. Nothing, such as extensions, rivets or prongs, may protrude from the mouthpiece.
- 5) A curb chain or strap must be used with curb bits. Curb chains and flat leather chin straps must be at least 1/2 inch (1.27 cm) in width and lie flat against the jaw of the horse. No wire, rawhide, metal or other substance can be used in conjunction with or as part of the flat leather chin strap or curb chain. Round, rolled, braided or rawhide curb straps are prohibited.
- 6) Bars of the mouthpiece must be round, smooth and unwrapped (except with latex) metal of 5/16 inch (0.79 cm to 3/4 inch (1.91 cm) in diameter measured one inch (2.54 cm) from the cheek. It may be inlaid, but smooth, or latex wrapped. The mouthpiece may be one, two or three pieces. A three piece, connecting link of 1 1/4 inch (3.18 cm) or less in diameter, or a connecting flat bar of 3/8 inch to 3/4 inch (0.95 cm - 1.91 cm) measured top to bottom with a maximum length of 2 inches (5.08 cm), which lies flat in the horse's mouth, is acceptable.
- 7) The port of any transitional bit must be no higher than 2 inches (5.08 cm).
- 8) Rollers attached to the center of the bit and covers are acceptable. Broken mouthpieces are permitted.

WSD 4.04 Transitional Curbs

- 1) Transitional Curb Bits permit the shanks to be independently moved and may be ridden with two (2) hands or one (1) hand.
- 2) A rider may use one (1) hand or two (2) hands with the transitional curb bit but may not go from one (1) handed to two (2) handed or vice versa during an individual test.
- 3) A transitional curb bit may only be used by horses five (5) years of age or over at any level.
- 4) Shanks must have an independent swivel action either from the port or the cannons of the bit.
- 5) Bit hobbles are not permitted on transitional curbs.

WSD 4.05 Fixed Shank Curbs

- 1) A fixed shank with a solid mouthpiece is only permitted in classes of Level 2 or higher and must be ridden one (1) handed.
- 2) No horse under six (6) years of age may be ridden in a fixed curb with a solid mouthpiece.
- 3) Bit hobbles below the reins are permitted.

WSD 4.06 Two Rein or Spade Bits

- 1) A spade bit or Two Rein (bosalita and spade bit) is only permitted in classes of Level 3 and above.
- 2) Must be ridden one (1) handed with the exception of the rider's free hand which can be used without penalty in the two rein setup.
- 3) The port of a spade bit may not exceed 3.5 inches (8.89 cm).
- 4) Bit hobbles below the reins are permitted.

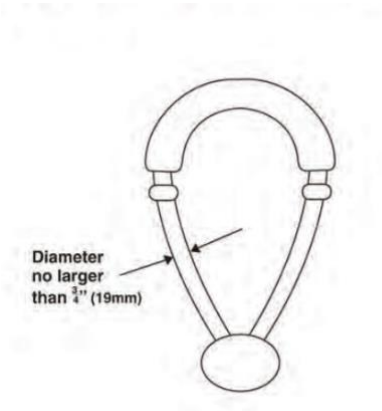
WSD 4.07 Illegal Bits and Bridles

- 1) Flat, sharp, slow twist, twisted or pointed edges on any mouthpiece.
- 2) Slip or gag bits, donut or flat polo mouthpieces.
- 3) Bits with reins attached to a single ring at the centre of a cross bar.
- 4) Any rein design or other device that increases the effective length thereby affecting the leverage of the shank of a curb bit.
- 5) Anything that alters the intended use of equipment as provided for in the description of appointments for a given class/test.
- 6) Curb bits that create double leverage.
- 7) Mechanical Hackamores.

- 8) Bosalita and snaffle configuration.
- 9) Halters of any description.
- 10) Nosebands on any bitted bridle.

WSD 4.08 Bosals

- 1) Bosals are permitted in any test in any level.
- 2) A bosal is rounded in shape and constructed of braided rawhide or leather and must have a flexible non-metallic core, attached to a suitable headstall.
- 3) The diameter must be no wider than $\frac{3}{4}$ inch (1.91 cm).



WSD 4.09 Reins

- 1) Reins must be of leather, rope, horsehair, or synthetic material.
- 2) Loop, buckled, mecate or split reins may be used with a snaffle bit.
- 3) Bridging of split reins is allowed when riding in two hands.
- 4) Split, loop, or romal reins may be used with a transitional curb bit.
- 5) With a romal setup the reins can be held in either hand, with hand around rein in a fist position with thumbs up. The non-rein hand must be on the romal (the keeper, or hobble, that attaches to the romal is considered to be part of the romal). The non-rein hand is not allowed, at any time, to touch the reins. The rider is allowed to shorten the reins while the horse is in motion as long as their hands are held in a legal manner. No fingers are permitted between the reins with a romal setup, except in the two rein setup (WSD 4.06).
- 6) Split or romal reins must be used with a fixed shank bit
- 7) Loop or mecate reins must be used with a bosal.
- 8) Slobber straps are permitted on snaffle bits provided they are no wider than 2 inch (5.08cm) and 8.5 inch in length (21.59 cm).

WSD 4.10 Saddles

- 1) A standard Western stock saddle or Western side saddle is to be used.
- 2) All saddles used must meet at least 2 of the 3 following requirements:
 - a) Saddle Skirt
 - b) Western Fenders which must be a minimum of 3 inches (7.62 cm) at the widest point
 - c) Horn

WSD 4.11 Whips

- 1) One (1) whip is permitted in the competition ring provided it is no longer than 47.24 inches (120 cm) including lash.
- 2) *Exceptions:*
 - a) To accommodate a physical disability more than one whip may be used.
 - b) When riding side saddle a cane may be used in place of a whip provided it is no longer than 36 inches (91.44 cm).

WSD 4.12 Optional Equipment

- 1) Breastplate
- 2) Crupper
- 3) Tapaderos
- 4) Hoof boots instead of horseshoes

WSD 4.13 Illegal Equipment

- 1) The use of illegal equipment will result in elimination from the class and/or competition.
- 2) The following equipment is illegal:
 - a) Martingales
 - b) Bit guards
 - c) Gadgets of any kind (bearing, side, running, balancing reins, nasal strips, tongue ties and tie-downs, etc.)
 - d) Any kind of tail or leg wraps (at the discretion of the judge protective boots may be permitted due to poor footing).
 - e) Any form of blinkers, earmuffs or plugs, hoods.
 - f) Fly masks/bonnets/veils (may be permitted at the discretion of the judge).

- g) Any decoration of the horse with extravagant items, such as ribbons or flowers, etc. in the mane, tail, etc.

WSD 4.14 Tack in Warm-Up Ring and Training Areas

- 1) Longeing is not permitted in warm-up areas where horses are being ridden for safety reasons. While longeing one whip is permitted.
- 2) Side-reins or head altering attachments of the bit or headstall to the saddle are prohibited when mounted.
- 3) In-hand whips for groundwork are prohibited.

Protective boots/bandages and fly masks are permitted in the warm-up ring but are prohibited in the show ring, unless permitted by the judge (WSD 14.13 2d and 2f).

WSD 4.15 Tack Inspection

- 1) The responsibility for the correct attire and equipment rests with the competitor.
- 2) Inspection of tack and bits may be completed by or at the discretion of a Competition Steward/Tack Inspector or judge. A horse must be eliminated from the test just completed if the bit is in violation of the rules and/or the tongue has been tied. All horses in each class/test may be inspected at the judge's discretion if any tack or equipment is thought to be illegal.
- 3) Tack and bits on both sides of each horse may be inspected and checked for each class/ test and may be done immediately as the horse leaves the arena if requested by an official.
- 4) When communicable disease is a concern, any deviations to established tack inspection protocol must be approved by the show management.
- 5) Stewards/Inspectors must use a new disposable protective glove for each horse.
- 6) If checking of the bridle is performed, it is to be done with the greatest caution, as some horses are very touchy and sensitive about their mouths.
- 7) If competitors are required to remove the bridle it should be done in a safe manner.
- 8) Any evidence of blood on the horse's mouth or sides will result in elimination of the entry for that competition. Environmental causes such as insect bites shall normally not be the cause of elimination.

WSD 5 PARA RIDERS

WSD 5.01 Definition

- 1) A Para Rider is any rider who is hearing impaired or otherwise permanently physically disabled and requires a substitution or permanent modification of equipment in order to compete.

WSD 5.02 Accommodation for Physical Disability

- 1) Para Riders may either compete in able bodied or Para only divisions with a dispensation certificate. Modified tack and or attachments or additional equipment required as per the dispensation certificate is permitted for all Para Riders.

WSD 5.03 Dispensation Certificate

- 1) Para Riders may apply for a dispensation certificate from WSDAC or provide a certificate from another National Equestrian Federation.
- 2) Dispensation Certificate. Any individual with a diagnosed permanent physical disability wishing to compete in a WSDAC sanctioned show with a compensatory aid and/or adaptive equipment must obtain a Dispensation Certificate. The Dispensation Certificate will list all compensatory aids and adaptive equipment allowed the individual while competing. Other compensatory aids or special equipment not specifically listed on the Dispensation Certificate are not allowed. A copy of the Dispensation Certificate must be included with the individual's entry. The competition manager or secretary shall include a copy attached to all applicable scoring sheets for the judge's reference.

WSD 5.04 Applying for a Dispensation Certificate

- 1) Applications for a Dispensation Certificate can be obtained via the WSDAC website. Only applications submitted along with supporting medical documentation will be considered.

WSD 6 ATTIRE

WSD 6.01 Required Attire

- 1) Helmet or Western Hat
 - a) WSDAC strongly recommends the wearing of a properly fitted and fastened safety approved protective headgear at all times when in the saddle.
 - b) Helmet use may be deemed mandatory in any competition and/or warm up areas where the show, organizers, show affiliation or facility owner requires the use of a helmet.
- 2) Long-sleeved shirt with any type of collar. Sleeves must come down to the wrist of the rider. Tails of long shirts must be tucked in. In the case of inclement weather it is at the judge's discretion to make concessions in acceptable clothing.
- 3) Trousers, pants, a one-piece long sleeved equitation suit provided it includes a collar, split riding skirt, riding skirt if riding side saddle.
- 4) Boots must have a minimum of 1/2" well defined square cut heel. High English type boots or half chaps are not permitted.

WSD 6.02 Optional Attire

- 1) Necktie, kerchief, bolo tie or pin
- 2) Vests
- 3) Spurs, western or english type, may be worn. Spurs must not be sharp and must be smooth to touch. Rowels are permitted but must be smooth and must rotate freely.
- 4) Chaps, shotgun chaps, chinks or western style half-chaps
- 5) Gloves

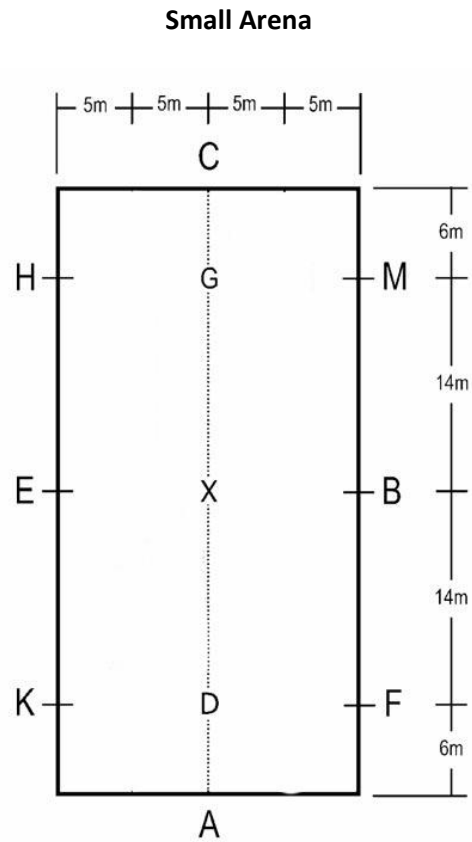
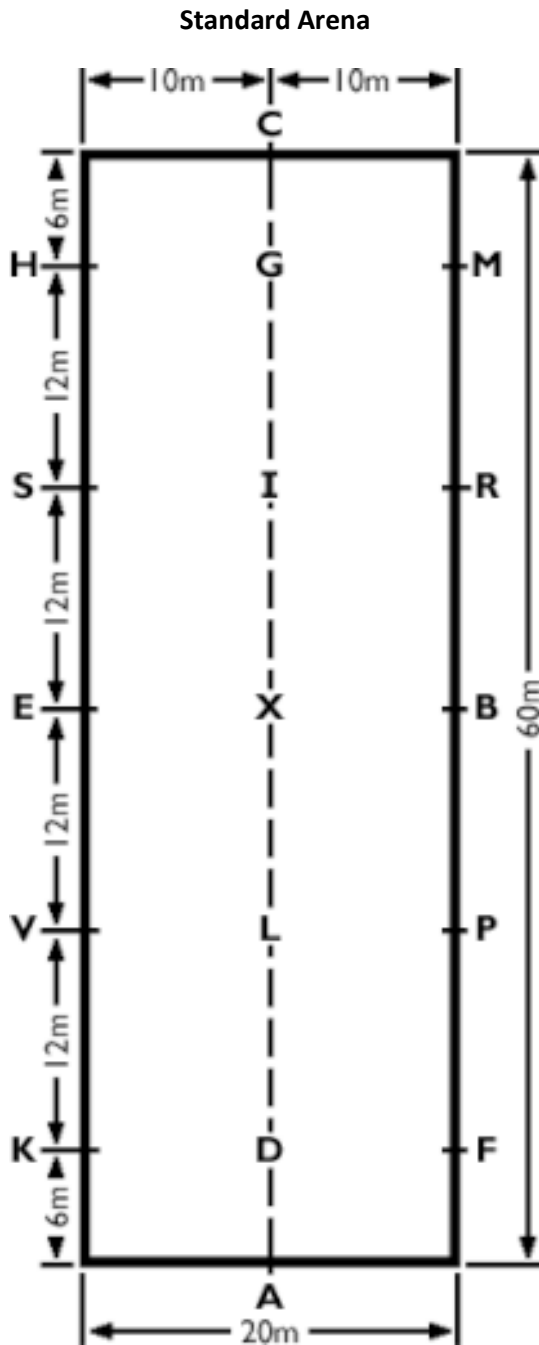
WSD 7 FIGURES

WSD 7.01 Figures

- 1) The figures in Western dressage tests are circles, serpentines, and figure eights:
 - a) Circle - The circle may have varying diameters specifically 8, 10, 15 and 20 metres.
 - b) Serpentine - A serpentine consists of 3 to 6 connected half circles or loops with the horse touching the long side of the arena. When crossing the centreline, the horse should be parallel to the short side. The straight connection varies in length depending on the size/diameter of the half circles. The size/diameter of the circle is determined by the number of loops of the serpentine. Serpentines start and end on the short side of the arena.
 - c) Figure Eight - The figure eight consists of two connected circles of equal size as prescribed in the test. The horse should be straight an instant before changing direction at the centre of the figure eight.

WSD 7.02 Arena Dimensions

The arena dimensions are as follows: Standard (20 x 60 metres), and Small (20 x 40 meters).



WSD 8 TRANSITIONS AND CHANGES OF DIRECTION

WSD 8.01 Transitions

- 1) The changes of gait and pace should be clearly shown when the rider's shoulder is at the prescribed marker; they must be smooth and not abrupt.

WSD 8.02 Changes of Direction

- 1) During changes of direction, the bend of the horse's body should adjust to the curvature of the line it follows, remaining supple and following the aids of the rider, without any resistance or change of gait, rhythm or speed. Corners should be ridden so that the horse maintains balance and regularity of the gaits.
- 2) Changes of directions can be executed in the following ways:
 - a) Right-angled turns
 - b) Through the short and long diagonal
 - c) Half circles with or without a change of rein
 - d) Serpentine
 - e) Turn on the forehand
 - f) Turn on the haunches
 - g) Half Pirouette
 - h) Change of lead (simple change through the walk, through the jog, or flying change)

WSD 9 WESTERN DRESSAGE TESTS

WSD 9.01 Tests for Western Dressage Competitions

- 1) All tests to be used at Western Style Dressage Association of Canada sanctioned shows are the Western Style Dressage Association of Canada Tests, and are copyrighted. Current Tests may be found at www.westernstyledressage.ca.

WSD 9.02 Purpose of the Levels

- 1) Introductory

The requirements of the Introductory Level are that the horse demonstrates correct basics, is supple and moves freely forward in a clear rhythm with a steady tempo, accepting a reasonable amount of connection with the rider's aids.

- 2) Basic

In addition to the requirements of the Introductory Level, the horse at Basic Level has developed increased balance and activity of the hindquarters to achieve improved connection and softness with the rider.

- 3) Level 1

In addition to the requirements of the Basic Level, the horse at Level 1 now accepts more weight toward the hindquarters. The horse moves with more of an uphill tendency, lengthened gaits; and reliably accepts contact. A greater degree of suppleness, balance, straightness and self-carriage is required than at the Basic Level.

- 4) Level 2

In addition to the requirements of Level 1, the horse at Level 2 now demonstrates increased engagement, especially in the lengthened jog and lope. Transitions between collected, and lengthened gaits should be well defined. The horse should show a greater degree of straightness, bending, suppleness, throughness, balance and self-carriage than at Level 1.

- 5) Level 3

In addition to the requirements of Level 2, the horse at Level 3 now remains reliably connected with the rider, showing a clear uphill balance and lightness as a result of improved engagement and collection. The movements are performed with greater straightness, energy and cadence than at Level 2.

- 6) Level 4

In addition to the requirements of Level 3, the horse at Level 4 now maintains a higher degree of connection and collection. The horse remains light and balanced performing the movements required with an emphasis on imperceptibility, accuracy and finesse than at Level 3.

WSD 9.03 Advancement of Levels Chart

LEVEL	GAITS & PACES **	TRANSITIONS **	MOVEMENTS **	FIGURES **
Introductory	<ul style="list-style-type: none"> • Free Walk • Working Walk • Working Jog 	<ul style="list-style-type: none"> • Halt to Working Walk • Working Walk to Working Jog • Working Jog to Working Walk 	<ul style="list-style-type: none"> • Halt • Change of direction 	<ul style="list-style-type: none"> • 20m Circles Working Jog • 20m ½ Circles Working Jog
Basic	<ul style="list-style-type: none"> • Free Jog • Working Lope 	<ul style="list-style-type: none"> • Halt to Working Jog • Working Jog to Working Lope 		<ul style="list-style-type: none"> • 15m Working Jog Circle • 15m Working Jog ½ Circle • 20m Working Lope Circle • 3 Loop Serpentine at Working Jog wall to wall
Level 1	<ul style="list-style-type: none"> • Lengthen Jog • Lengthen Lope 	<ul style="list-style-type: none"> • Working Jog to Lengthen Jog and vice versa • Working Lope to Lengthen Lope and vice versa 	<ul style="list-style-type: none"> • 1/4 Turn on Forehand • 1/2 Turn on Forehand • Leg Yield at Working Jog • Change of Lead through Jog • Rein Back 3-4 Steps • Counter lope 	<ul style="list-style-type: none"> • 10m Circles Working Jog • 15m Circle Working Lope • 3 Loop serpentine at working lope with change of lead through working jog
Level 2	<ul style="list-style-type: none"> • Shortened Walk • Collected Jog • Collected Lope • Free Lope 	<ul style="list-style-type: none"> • Shortened Walk to Collected Lope • Collected Lope to Working Walk 	<ul style="list-style-type: none"> • Walk ½ Turn on Haunches • Shoulder-in Collected Jog • Haunches-in Collected Jog • Haunches-out Collected Jog • Simple Change of Lead Through Walk • Rein Back/Walk Forward Sequence 	<ul style="list-style-type: none"> • 10m Circles at Collected Jog • 10m Circles at Collected Lope • 3 Loop Serpentine wall to wall at Collected Lope
Level 3	<ul style="list-style-type: none"> • Collected Walk • Lengthened Stride in Walk 	<ul style="list-style-type: none"> • Collected Lope to Halt and vice versa • Rein back to collected lope 	<ul style="list-style-type: none"> • Full Walk Pirouette • Zig-Zag Half-Pass Collected Jog • Half Pass Collected Lope • Rein Release in Collected Lope • Single Flying Change 	<ul style="list-style-type: none"> • 3 Loop Serpentine with Flying Changes
Level 4	<ul style="list-style-type: none"> • Very Collected Lope 		<ul style="list-style-type: none"> • Flying changes with un-specified strides • Flying changes on the 4th and 3rd strides • Working Half-Pirouette in Very Collected Lope 	<ul style="list-style-type: none"> • 4 Loop Serpentine with Flying Change at X • Elongated Figure Eight

*** In addition to requirements of previous level*

WSD 10 COLLECTIVE MARKS

WSD 10.01 Collective Marks

- 1) Collective marks are awarded in the Level tests for the following:
 - a) Gaits
 - b) Impulsion and Energy
 - c) Rider Position and Communication
 - d) Compliance

WSD 10.02 Gaits

- 1) Gaits are discussed in WSD 2.

WSD 10.03 Impulsion and Energy

- 1) Impulsion is the term used to describe the transmission of an eager and energetic, yet controlled, positive forward energy generated from the hindquarters into the athletic movement of the horse. Its ultimate expression can be shown through the horse's soft and swinging back guided by light and elastic contact.
- 2) Speed, of itself, is not impulsion. Correct impulsion is demonstrated by a more pronounced articulation of the hind leg in a continuous action. The hock, as the hind foot leaves the ground, should first move forward rather than being pulled upwards.

WSD 10.04 Rider Position and Communication

- 1) All the movements should be obtained with imperceptible aids and without apparent effort of the rider. The rider should be well-balanced, elastic, sitting deep in the center of the saddle letting the core muscles smoothly absorb the movement of the horse, having supple thighs with the legs steady and stretched well down. The heels should be the lowest point. The upper part of the body should be upright. The light contact of the rider's hands should be independent of the rider's seat. The hands should be carried with a straight line from the elbow through the hand to the horse's mouth. The elbows should be close to the body.

WSD 10.05 Accuracy

- 1) Movements of the ride are accurately demonstrated and transitions are performed at the correct location.

WSD 10.06 Compliance

- 1) Compliance is the hallmark of the Western Dressage Horse. Compliance is demonstrated by the willing cooperation, harmony, attention, and confidence during each movement performed. Acceptance of the rider' aids, straightness, lightness, and ease of movements demonstrate compliance during the tests and patterns. Resistance to or evasion of the rider's hand, being either "above the bridle" or "behind the bridle" demonstrate lack of compliance.
- 2) The general demeanor of the horse and acceptance of the aids must be considered before making a judgment for each movement where the tongue is displayed and for the collective marks for compliance. Grinding the teeth or agitation of the tail, are mostly signs of nervousness, tension or resistance on the part of the horse and must be taken into account by the judges in their marks for every movement concerned, as well as in the collective mark for "compliance".

WSD 11 EXECUTION AND JUDGING OF TESTS

WSD 11.01 Calling Tests

- 1) All tests may be called during the competition.
- 2) It is the responsibility of the competitor to arrange for a person to call the test if required. Lateness and errors in calling the test will not relieve the rider from “error penalties”. Calling the tests is limited to reading the movement as it is written twice only.
- 3) All Freestyle tests must be ridden from memory.
- 4) To accommodate hearing impaired riders, callers may call the test letters phonetically when reading the test. For example, the letter B may be called as “Bravo”, and the letter E may be called as “Echo” and so on. Permission must be granted from the judge prior to the caller using this way of reading the test to the rider.

WSD 11.02 Salute

- 1) At the salute all riders must take the reins in one hand. The rider shall let one arm drop loosely along the body and then nod the head in the direction of the judge at C.
- 2) Men wearing cowboy hats may doff the hat to the judge in lieu of the civilian salute as described in WSD 11.02 1.
- 3) Only riders who are in Military Dress Uniform may salute in Military Fashion.

WSD 11.03 Voice and Touch

- 1) Quiet use of the voice and limited clicking of the tongue is permitted.
- 2) Touching the horse in front of the saddle as a reward is permitted.

WSD 11.04 Judging a Test

- 1) The levels of western dressage are offered as a means of evaluating a horse that is changing. The purpose of each test is printed on the cover and the horse shall be considered in light of the degree of training it should have achieved to be shown at that level.
- 2) A test begins with the entry at A and ends after the final salute. The competitor should leave the arena at A at a walk, on a long or loose rein. In Freestyle the test begins in the first stride after the salute and ends at the final salute.

- 3) After the sound of the bell, the competitor should enter the arena at A as soon as possible. Exceeding forty five (45) seconds before entering the arena after the bell has sounded will entail a two (2) point penalty ("other error"). Exceeding ninety (90) seconds before entering the arena after the bell has sounded will entail elimination. No competitor can be required to ride prior to their scheduled time.
- 4) The judge may stop a test and/or allow a competitor to restart a test from the beginning or from any appropriate point in the test if, in the judge's discretion, some unusual circumstance has occurred to interrupt a test. Time-outs are not permitted.
- 5) Any resistance, which prevents the continuation of the test for longer than twenty (20) seconds, results in elimination. However, resistance that may endanger the rider, horse, judge or the public will result in elimination for safety reasons earlier than within twenty (20) seconds. Resistance of twenty (20) seconds is cumulative.
- 6) In the case of a fall of horse and/or rider the competitor will be eliminated from the test they are competing in. If the horse leaves the arena with or without the rider (all four (4) feet outside the fence or line marking the arena perimeter) between the beginning and end of the test, the competitor is eliminated.

WSD 11.05 Points Awarded

- 1) Movements & Transitions: All movements and certain transitions from one to another, which have to be marked by the judge, are numbered on the judge's sheets. The movements are awarded marks from 0 to 10, including half marks (0 being the lowest mark and 10 being the highest). Judges may, upon their discretion, award 0.5 points from 0.5 to 9.5 inclusive.
- 2) Collective marks: Collective marks are awarded from 0 to 10, including half marks, after the competitor has finished their performance. Judges may, upon their discretion, award 0.5 points from 0.5 to 9.5 inclusive. See WSD 10 for discussion on collective marks.
- 3) Co-efficient: Certain movements and collective marks within the test patterns may have a co-efficient. The marks are multiplied by the corresponding co-efficient where applicable and then totaled.
- 4) The scale of marks is as follows:
 - 10 - Excellent
 - 9 - Very Good
 - 8 - Good
 - 7 - Fairly Good
 - 6 - Satisfactory
 - 5 - Marginal
 - 4 - Insufficient
 - 3 - Fairly Bad
 - 2 - Bad
 - 1 - Very Bad
 - 0 - Not executed

("Not executed" means that practically nothing of the required movement has been performed)

WSD 11.06 Errors

- 1) Error of Course: When a competitor makes an “error of course” (i.e. takes the wrong turn, omits a movement, etc.) the Judge at C warns the competitor by sounding the bell.
 - a) The Judge at C shows the competitor, if necessary, the point at which the competitor must take up the test again and the next movement to be executed, then leaves the competitor to continue the test.
 - b) In some cases when the Competitor makes an “error of course”, the sounding of the bell would unnecessarily impede the flow of the test (i.e. the Competitor performs a transition early from collected jog to working walk at P instead of F) it is up to the Judge at C to decide whether to sound the bell or not.
 - c) The decision as to whether or not an “error of course” has been made will be at the sole discretion of the Judge at C. The other Judges’ scores will be adapted accordingly.
- 2) Error of Test/Execution: When the competitor makes an “error of test” (i.e. performs collected jog rising, or at the salute does not take the reins in one hand, changes from one hand to two hands and vice versa during a test etc.) the competitor must be penalised as for an “error of course”.
 - a) In principle a competitor is not allowed to repeat a movement of the test unless the Judge at C decides on an “error of course” (sounds the bell).
 - b) If the competitor has started the execution of a movement and attempts to do the same movement again, the Judges must consider the first movement shown only and at the same time, penalise for the “error of course”.
- 3) Penalties for Error of Course: Every “error of course” whether the bell is sounded or not, must be penalized as follows:
 - a) First time by two (2) points;
 - b) Second time by four (4) points;
 - c) Third time the competitor is eliminated. However, at the discretion of the judge, the rider may continue to finish the test. If the competitor’s continued presence in the ring is about to interfere with the start of the next scheduled ride, then the judge must excuse the competitor from the ring.

Exception: Interception by the caller to correct the competitor will incur elimination and will be cited as unauthorized assistance.

- 4) Other Errors: The following are considered “other errors” and will incur a two (2) point deduction per error. These errors are not cumulative and will not result in Elimination.
 - a) Entering the arena before the sound of the bell.
 - i) Exception: If arena conditions do not permit riding around the perimeter of the arena prior to entry (WSD 13.04).
 - b) Not entering the arena within forty five (45) seconds after the bell, but within ninety (90) seconds.
 - c) Freestyle
 - i) In Freestyle classes, entering the arena after more than twenty (20) seconds of music.
 - ii) If the Freestyle test is longer than the stipulated time on the test sheet, deduct two (2) points from the total artistic score.
- 5) Errors missed by Judge
 - a) If the judge has not noted an error the competitor has the benefit of the doubt.
- 6) Penalty Points from Errors
 - a) Penalty points (detailed above) are deducted on each Judge’s sheet from the competitor’s total points.

WSD 11.07 Elimination

- 1) Elimination from Class
 - a) Three (3) “errors of course” (WSD 11.06 1)
 - b) Not entering the arena within ninety (90) seconds after the sound of the bell.
 - c) Excessive bucking.
 - d) Use of illegal equipment.
 - e) Unauthorized assistance: Any intervention by a third party with the objective of facilitating the task of the competitor, including voice, signals, etc.
 - f) All four feet of the horse leave the arena at the same time during the test.
 - g) Resistance of longer than twenty (20) seconds (individual or cumulative), however any resistance that presents a safety concern for the rider, horse, judge, other exhibitors, or public will result in elimination earlier than twenty (20) seconds.
 - h) In the case of a fall of horse and/or rider the competitor will be eliminated.
 - i) Concern for the safety of rider, horse, judge, other exhibitors, or public.
 - j) Failure to wear competitor number.

2) Elimination from Competition

- a) Misrepresentation of entry or inappropriate entry.
- b) Horse's tongue tied down.
- c) Cruelty including excessive spurring.
- d) Evidence of blood on a horse in the competition arena shall be cause for elimination from the competition by the judge at C.
- e) Evidence of blood on a horse outside the competition arena shall be cause for elimination by competition management.
- f) In the case of marked lameness the judge shall inform the competitor of elimination from the competition.

WSD 12 COMPETITIONS

WSD 12.01 Eligibility in competition

- 1) Western dressage competitions are open to riders on all types of equines including horses, ponies, mules and donkeys.
- 2) Classes are given at different levels commensurate with the horse's stage in training. These are Introductory, Basic, and Levels 1 through 4. These Levels represent the Core Program of the Association and scores earned at sanctioned shows are eligible for Points Programs (WSD 16).
- 3) Shows may offer Peripheral classes including Freestyle and Ride-Ability, however they are not recognized in the WSDAC core program (WSD 14).
- 4) Restrictions on Entries:
 - a) Horses may compete in more than one (1) competition in a day.
 - b) A horse may compete in a maximum of two (2) consecutive test levels (WSD 9) and a maximum of four (4) test rides in any competition day.
 - c) A horse may be ridden at two (2) consecutive levels (WSD 9) with the same or different riders, but may not be entered in the same class with two different riders. A horse may not compete in more than two (2) consecutive levels (WSD 9) at any given competition. See WSD 13.02 4 for additional clarification. It is the upmost responsibility of the rider to ensure the horse is fit enough to compete in all classes entered.
 - d) Peripheral classes including Freestyle and Ride-Ability (WSD 14) are not included in the number of test rides in WSD 12.01 4 b.

WSD 12.02 Divisions for purposes of competition

- 1) Divisions for Competition: WSDAC recognizes three (3) divisions for the purposes of competition:
 - a) Pro: All competitors over the age of 18 who receive remuneration for riding, coaching of any rider, or training of any horse regardless of discipline.
 - i) There are certain circumstances where a competitor can receive remuneration, but still remain eligible for the Amateur division (see WSD 12.02 1 b i and ii for exceptions)

- ii) If during the competition year an Amateur competitor no longer meets the eligibility of an Amateur in regard to remuneration (see WSD 12.02 1b), they will be automatically be considered a Pro. It is the responsibility of the competitor to inform WSDAC of a change in status. Any scores earned up to this point will remain tracked in the Amateur division. Any scores earned after a competitor no longer meets the eligibility of an Amateur will be tracked in the Pro division. Once a Pro, a competitor must wait three (3) years before they are able to regain their Amateur status (see WSD 12.02 1b).
 - iii) An Amateur or Junior competitor may choose, for a competition year, to compete in the Pro division at competitions. An Amateur or Junior competitor wishing to do so must declare Pro as their division to WSDAC for National Points tracking (see WSD 12.02 5). The competitor will then enter the Pro division at competitions, and have their scores tracked in the Pro division for the competition year. If in a following competition year an Amateur wishes to return to the Amateur division, the three (3) year waiting rule for regaining Amateur status does not apply, so long as the competitor has maintained their eligibility as an Amateur competitor.
 - b) Amateur: All competitors who are no longer Juniors (see WSD 12.02 c), and who have not received remuneration for riding, coaching of any rider, or training any horse within the past three (3) years. The following are exemptions:
 - i) Individuals receiving remuneration for driving, in-hand work or therapeutic riding only, are eligible to compete in the Amateur division.
 - ii) Individuals that hold judging cards or receive remuneration for judging, but meet the definition above are eligible to compete in the Amateur division.
 - c) Junior: Individuals are eligible as Junior Exhibitors until the end of the calendar year in which they reach the age of eighteen (18).
 - i) Juniors who receive remuneration for riding, coaching of any rider, or training of any horse regardless of discipline, are not required to ride in the Pro division (WSD 12.02 1a) until they are over the age of 18.
- 2) Open Classes: Competitions can choose whether to offer separate classes for the three divisions of Pro, Amateur or Junior (WSD 12.02 1). If competitions do not separate a class by the divisions, then the class will be considered Open. This means all competitors regardless of age and/or amateur/professional status (see WSD 12.02 3 for treatment of Gaited classes).

- 3) Gaited Classes: All competitors showing a gaited horse. Competitions can choose whether to offer separate classes for the three divisions of Pro, Amateur or Junior for gaited horses (WSD 12.02 1) If competitions do not separate a gaited class by the divisions, then the class will be considered Gaited Open. This means all competitors riding gaited horses regardless of age and/or amateur/professional status (see WSD 12.02 2).
- 4) Declaration of Division for National Points: Scores earned by competitors at WSDAC sanctioned shows are eligible to be tracked in the National Points Program and Lifetime Horse Performance Program (if the horse is registered with WSDAC). WSDAC members must declare on their membership profile which one of the three (3) divisions of Pro, Amateur or Junior (WSD 12.02 1) their scores will be tracked in for the given competition year.

WSD 13 COMPETITION MANAGEMENT

WSD 13.01 Scoring, Classification and Prize-Giving

- 1) It is recommended that scorers are not competitors, owners, coaches, trainers or family members of competitors/horses in the class (es) in which they are scoring.
- 2) After each performance and after the judge has given the Collective Marks (WSD 10), the judge's sheets pass into the hands of the scorers. Scores and comments must be written in ink with errors noted in red. In the case of any corrected scores the judge who has made the correction must initial it. The marks are multiplied by the corresponding co-efficient where applicable and then totaled. Penalty points incurred for errors in the execution of the test are deducted from the final score, not the individual movement.
- 3) The total score for the test is obtained by adding the total points. Total final results must be published in marks as well as in percentages with numbers to three places after the decimal point. Scores must be posted on a public scoreboard as soon as possible after each class. The public scoreboard may be in either paper or electronic format. The name of the judge must be posted. The published final results must remain posted throughout the entire competition.
- 4) In all competitions the winner is the competitor having the highest total points, the second placed competitor is the one with the next highest total points and so on. In case of equality of points the competitor with the highest marks received under Collective Marks shall be declared the winner.
 - a) When the scores for Collective Marks (WSD 10) are also equal the horses must remain tied. Errors on a test may not be used to break ties.
 - b) When the totals of the scores for Collective Marks (WSD 10) are also equal, ties in classes that include prize money, shall remain tied for the purpose of dividing the prize money.
- 5) If a competitor withdraws (scratches) prior to a class or is excused, eliminated or is a "no show" prior to, or during the performance of a test, the words "scratched", "excused", "eliminated", or "no show" or abbreviations of each, must appear after the competitor's name in the result sheet.
- 6) A judge is free to leave when all scores from that judge's class/tests have been totaled.
- 7) After the awards for a class have been pinned, and placings and scores have been displayed, the judge's score sheet shall be given to the competitor. Competition Management must announce said posting and must make test sheets available to competitors immediately after the posting. The score sheet must be handed directly to the competitor or the competitor's representative. Privacy must be maintained. WSDAC highly recommends that show management keep copies of all scoresheets (photocopy or electronically scanned).

- 8) If a mathematical error on the score sheet is discovered by the competitor, it must be brought to the attention of competition management within one (1) hour of the official posting of the scores from the last class of that competition day.
- 9) A video recording may not be used to dispute a judge's decision.

WSD 13.02 Requirements for Competition Management

- 1) All classes and divisions (WSD 12.02) must be clearly listed in the prize list.
- 2) When entries warrant, competitions are encouraged to split classes into separate divisions, and to provide separate awards for Pro, Amateur and Junior (WSD 12.02 1). When separate awards are given, it is considered to be a separate class. If classes are not separated by divisions, the class is considered Open (WSD 12.02 2). Scores earned in an Open class will still be tracked in the competitors declared division for National Points (see WSD 12.02 1 and 4 and WSD 16.01 4).
- 3) Gaited horses must have their own separate classes (WSD 12.02 3). Competitions can choose to split the Gaited classes into separate divisions for Pro, Amateur and Junior (WSD 12.02 1). If gaited classes are not separated by divisions, the class is considered Gaited Open (WSD 12.02 3). Scores earned in a Gaited Open class will still be tracked in the competitors declared division for National Points (see WSD 12.02 1 and 4 and WSD 16.01 4).
- 4) A class is considered a Level, and Test Letter and a Division. For example:
 - a) Class 1 Introductory Test A Pro; Class 2 Introductory Test A Amateur; Class 3 Introductory Test A Junior
 - b) If separate divisions are not offered, then there would only be one class called Class 1 Introductory Test A Open. This class would include all Pro, Amateur and Junior riders entering Test A.
- 5) Horses may be ridden only once in any class. The horse may not compete against itself, even with a different rider.
- 6) If competitions offer separate divisions for classes, a horse/rider combination may only ride in one division. Example, if three (3) divisions are offered for Introductory Test A as per WSD 13.02 4a, a horse/rider combination may only enter one of the three (3) divisions.
- 7) A maximum of 2 riders may ride the same horse in any given competition, provided the same horse is not entered in the same class.
- 8) A separate show number must be issued for each horse/rider combination.

WSD 13.03 Competition Schedule

- 1) Organizers must prepare a time schedule which includes all rides. Competitors shall be notified of their riding times at least forty eight (48) hours prior to that start of the competition.
- 2) Classes must be run in their entirety and rides may only be scheduled out of sequence to allow a reasonable interval between two or more horses entered by the same rider in the same class. Also, when preparing a time schedule, consideration must be given to riders entered in more than one (1) class or riding more than one (1) horse.
- 3) Time intervals should be allowed between rides for judge's breaks and awards presentations.

WSD 13.04 Entering the ring prior to ride

- 1) Competitors should be permitted by management or the Judge to enter the arena prior to their ride if arena conditions do not permit riding around the perimeter of the arena prior to entry. Such permission must be announced prior to the start of the class.

WSD 13.05 Judges

- 1) No judge shall be required to officiate longer than eight (8) hours in one day, and cannot be required to be on the competition grounds longer than ten (10) hours unless the judge has agreed with show management.
- 2) Judges should be given at least a forty five (45) minute lunch break and at least a ten (10) minute break every two (2) hours.
- 3) Judges are not to be housed in private homes unless the judge has agreed to it prior to the competition.
- 4) Judge's comments, while judging, may not be audio-recorded without prior written permission of the judge, the specific competitor(s), and management.

WSD 13.06 Scribes

- 1) Scribes should have knowledge of the tests being judged.
- 2) Scribes must not be an owner, coach, trainer or family member of a competitor/horse in the class(es) in which they are scribing.

WSD 13.07 Arena Specifications

- 1) The arena should be on as flat and as level ground as possible.
- 2) The Standard Arena is sixty (60) metres long and twenty (20) metres wide. The Small Arena is forty (40) metres long and twenty (20) metres wide. Arena measurements are for the interior of the enclosure. Refer to WSD 7.02 for diagrams.
- 3) The enclosure itself should ideally consist of a low fence about 0.3 metres high and should be completely enclosed, except for the entrance at A. The width of the entrance must be at least two (2) metres. Exceptions to the 0.3-metre fence such as poles or ground markings are permitted as long as the arena is visibly marked and presents no safety risk to horse and rider.
- 4) The fence should be as such to prevent the horse's hooves from becoming entangled, and arena stakes, if used, must be covered with balls or similar objects so as to prevent injury. Rope, concrete or unbreakable chain fencing is not permitted.
- 5) Competition management should make every effort to provide the best possible footing in competition and schooling areas.
- 6) Location of Judges: The Judge is preferably placed a maximum of five metres and minimum of three metres from the end of the arena and must be directly behind the letter C. If additional judges are used they must be stationed at either B or E.
- 7) Letters should be placed 1 metre from the edge of the competition ring.

WSD 13.08 Protests:

- 1) In order for a WSDAC competitor to file a protest at a competition where there is no steward present, the following protocol is to be used:
 - a) The person filing the protest must be a current WSDAC member.
 - b) The person protesting takes their protest to the show manager/secretary, citing the rule in question.
 - c) The show manager/secretary must have a copy of the current WSDAC rulebook available on site which may be hard copy or electronic form.
 - d) The show manager/secretary presents the complaint to the judge in due course.
 - e) The person protesting cannot take the protest directly to the judge.
 - f) The judge's decision is final.
- 2) In the case of a steward present at a competition, only the steward shall hear the protest and decide the best course of action to ensure the protest has been dealt with accordingly.

WSD 14 PERIPHERAL CLASSES

WSD 14.01 Overview of Peripheral Classes

- 1) Peripheral classes include Freestyle and Ride-Ability classes.
- 2) These classes are not part of the WSDAC core program and are not eligible for the National Points (WSD 16.01) or the Lifetime Horse Performance Points program (WSD 16.02).

WSD 14.02 Freestyle

- 1) A Western Dressage Freestyle is a performance where the gaits and movements of the discipline are ridden to music. It includes the required movements and gaits of the standard Western Dressage Tests for that level. The competitor is, however, absolutely free to choose the form and manner of the presentation within the fixed time provided. The performance should clearly show the unity between rider and horse as well as harmony in all the movements and transitions. The horse and rider should appear as one; "lightness" of contact is the hallmark of Western Dressage Freestyle.
 - a) The competitor must indicate the level of Freestyle to show management for submission to the judge if the class offered is not specific to the level.
 - b) The competitor should provide two (2) recordings of the music to which the Freestyle will be performed. This allows a backup for the management to use.
 - c) The judge will provide two (2) overall scores; one (1) for compulsory movements and one (1) for artistic marks. The judge shall judge the class in accordance with the freestyle scoring sheet.
 - d) Time begins when the horse moves forward after the competitor's halt and salute and ends with the final halt and salute.
 - e) At the beginning and end of a Freestyle Test a halt with a salute is compulsory.
 - f) Movements "above the level" (found only in higher level tests) receive a deduction of 4 points from the Total Compulsory Movements for each illegal movement, but not for each recurrence of the same movement. All figures (regardless of size), patterns, combinations or transitions composed of elements permitted in the declared level are permitted, even if the resulting configuration is found only in higher levels.
 - g) If a compulsory movement has been left out (no execution can be seen), the movement must be marked with a score of zero. The mark for choreography will be negatively influenced and the mark for degree of difficulty cannot be higher than 5.
 - h) In all competitions the winner is the competitor having the highest total points, the second placed competitor is the one with the next highest total points and so on. In case of equality of points the competitor with the higher score for artistic marks shall be declared the winner.

- i) When the artistic marks scores are also tied the horses must remain tied. Errors on a test may not be used to break ties.
 - ii) When the totals of the artistic marks scores are also equal, ties in classes that include prize money, shall remain tied for the purpose of dividing the prize money.
- i) For other errors refer to WSD 11.06 (4c).

WSD 14.03 Ride-Ability

- 1) The purpose of Western Dressage Ride-Ability Tests is to show the correct training of the horse as it pertains to Western Dressage with a series of obstacles.
- 2) Tests are designed with obstacles and paces relative to the level of training. The Ride-Ability test is used to demonstrate the horses' development of athleticism, correctness, and willingness of negotiating the test, while displaying correct training principles.
- 3) Scoring:
 - a) Scoring shall be on a basis of marks per movement in the pattern (WSD 11.05 1).
 - b) The judge shall allocate marks for collective marks at the end of the test (WSD 11.05 2).
 - c) The highest score wins the class. Ties are to be broken by collective marks. Should there be a tie in collective marks, the riders shall be awarded the same placing (WSD 13.01 4).
- 4) For full details on Ride-Ability please visit the website www.westernstyledressage.ca.

WSD 15 WSDAC JUDGES

WSD 15.01 Judges for Sanctioned Competitions

- 1) Sanctioned competitions are to be judged by WSDAC judges.

WSD 15.02 Types of Cards

- 1) There are three ways to become a WSDAC judge:
 - a) WSDAC Judging Program Card
 - i) Applicants must complete the WSDAC Judges Application Process and complete a WSDAC Judging School Program. Applicants who successfully complete the Application process and Judging School Program will be granted a WSDAC Judges Card.
 - ii) For full details and application for the Judging card please visit the website www.westernstyledressage.ca.
 - b) Equivalency Card
 - i) USEF WD carded Judges qualify for an Equivalency WSDAC Judges Card.
 - ii) For full details and application for the Equivalency card please visit the website www.westernstyledressage.ca.
 - c) Guest Card (per competition basis)
 - i) WSDAC will accept Guest Judge Card applications for sanctioned shows. These guest cards will be issued on a competition basis.
 - ii) **WSDAC will NOT accept Guest Judge Card applications for any Virtual Sanctioned Shows.**
 - iii) To qualify for a guest card individual must hold a current dressage judging card with any of the following: FEI, USEF, USDF "L", Equine Canada, or a Provincial Level card.
 - iv) For full details and application for the Guest Card program please visit the website www.westernstyledressage.ca.

WSD 15.03 Conflict of Interest Policy

- a) Judges shall not officiate in any division in which a member of their family or a horse owned by the immediate family is competing, or in which clients and/or their horses are competing.
- b) No judge who owns or is employed by an establishment may judge any horse or competitor that boards, is trained or takes instruction at said establishment.
- c) A judge may not judge any division where a competitor or exhibitor is the owner or employee of an establishment at which said judge boards, trains or takes instruction.
- d) Judges may not discuss the purchase or sale or lease of any horse during a competition at which they are officiating.
- e) Judges may not provide instruction to any competitor within 14 days prior to a competition in which they are judging. This includes clinics and regular instruction.
- f) Judges may not, the day preceding and during the period of a competition at which they are judging, be the house guests of any person who is exhibiting and/or competing or whose family is exhibiting and/or competing at such competition.
- g) A show organizer may not hire his/her spouse or a member of his/her immediate family as a judge.
- h) Neither competition managers nor members of their families are eligible to serve as judges at any competition they are managing.
- i) In addition, the following persons are ineligible to serve as judges at a competition: the president, chairman, secretary, other officers, committee members, or employees of the competition.

WSD 16 WSDAC SHOW PROGRAMS

WSD 16.01 National Points Program

- 1) Scores earned by Members during the year at sanctioned WSDAC shows (WSD 16.03 & WSD 16.04) are eligible to be recorded by WSDAC. Competitors must be current WSDAC members at the time the scores were earned.
- 2) The National Points Program includes scores earned at any sanctioned shows from December 1 to November 30. Awards will be announced and handed out by January to allow WSDAC time to verify standings and organize awards.
- 3) Scores are recorded by division (Pro, Amateur, Junior, and Gaited) and Level (Introductory, Basic, and Level 1 to 4).
- 4) WSDAC members must declare on their membership profile which one of the three (3) divisions of Pro, Amateur or Junior (WSD 12.02 1) their scores will be tracked in for the year (see WSD 12.02 4). If there are any changes to your division, it is the member's responsibility to inform WSDAC. Scores will only be tracked for current active members.
- 5) Peripheral classes as per WSD 14 (Freestyle and Ride-Ability) are not eligible for this program.
- 6) For full details on the National Points Program please visit the website www.westernstyledressage.ca.
- 7) **Special Circumstances – In the event of a pandemic or any other unforeseen extraordinary event that may affect national year-end and lifetime awards, WSDAC reserves the right to make any changes to the National Points and Awards programs.**

WSD 16.02 Lifetime Horse Performance Programs

- 1) Horses registered with WSDAC will receive a lifetime registration number that will stay with the horse.
- 2) Scores earned by the horse/rider combination at sanctioned chapter or permit shows (WSD 16.03 & 16.04) will be eligible to be recorded in WSDAC's Lifetime Horse Performance Program.
- 3) Scores earned are converted into points according to the Scores & Points Conversion table.
- 4) Points are accumulated by a horse regardless of the rider.
- 5) Peripheral classes as per WSD 14 (Freestyle and Ride-Ability) are not eligible for this program.
- 6) For full details on the Lifetime Horse Performance Programs please visit the website www.westernstyledressage.ca.

WSD 16.03 Sanctioned Shows

- 1) Requirements to sanction a show:
 - a) Must be judged by a WSDAC Judge (see WSD 15 for details on Judges)
 - b) All breeds must be permitted to show
 - c) WSDAC rules and tests must be used
 - d) Applications for sanctioning of WSDAC shows must be submitted at least 14 days prior to the closing date of the show. No exceptions.
- 2) Types of sanctioned shows:
 - a) Chapter Show
 - i) Recognized Regional Chapters that hold shows are automatically eligible to be sanctioned with WSDAC provided the requirements in WSD 16.03 1 are met.
 - ii) Chapters must inform WSDAC of the details of the show. WSDAC will review and issue a Show Number.
 - b) Permit Show
 - i) A Permit is required when hosting a nationally sanctioned WSDAC show that is not affiliated with a chapter.
 - ii) Show organizers must submit an application to WSDAC for approval.
 - iii) Once approved there is a nominal fee payable to WSDAC to sanction the show. Once paid the show will be issued a permit and Show number.
- 3) Show results must be submitted to WSDAC within 14 days after the date of the show. Results must be submitted in the required format, containing the WSDAC rider membership and the WSDAC horse number. Failure to submit the results in the correct format may be subject to an invoiced \$50 administration fee. Outstanding invoices may result in the denial of future show permits.
- 4) For full details on sanctioning a show, including the permit application, please visit the website www.westernstyledressage.ca.

WSD 16.04 Virtual Sanctioned Shows

1) Show Organizers

- a) To be recognized by WSDAC, online shows must meet the same criteria as the in-person sanctioned shows. Refer to the Sanctioned Shows section at www.westernstyledressage.ca
- b) Online show hosts should provide the Sanction Show Criteria and any other show materials to the competitors and judges by directing them to the above link. The above link provides all the information pertaining to how these shows are to be conducted and judged.
- c) All shows that meet the specific criteria provided by the show host in addition to those listed below are eligible for WSDAC show recognition.
- d) WSDAC certified judges only. No Guest Cards will be available for the WSDAC Sanctioned VWD-Shows.

2) Competitors

- a) Use arenas that are as near as possible to regulation size and be sure letters are set appropriately to be viewed by the judge. Cones with large letters on them and poles on the ground to delineate the corners are acceptable. Competition ring **MUST** not have any obstacles.
 - i) Intro and Basic must use a 20 x 40 metre arena
 - ii) Level 1 through Level 4 must use a 20 x 60 metre arena
 - iii) All Freestyles are in a 20 x 60 metre arena
- b) Videos of tests must be **unedited** from start to finish, including the equipment, attire, and bit check. They must be one continuous recording with the horse and rider visible at all times.
- c) Videos **must** be filmed in LANDSCAPE orientation.
- d) After entering the arena, prior to beginning the test, a **CLASS INFORMATION SIGN** must be held up showing:
 - i) the name of the show
 - ii) date of the show
 - iii) horse's name, class # and test

Remove the sign just before beginning the ride. **Please make sure that all information is clear and easy to read for the judge.** The videographer can hold the sign then move back to behind the camera or hold the sign in front of the camera at arm's length while also holding the camera.

- e) Keep the horse in video frame, paying close attention to the near corners. You may zoom in slightly on the far corners. Videos must be in focus.
- f) Make sure to keep the test ring letters in the frame which are elements of the test being performed.
- g) As soon as the test is finished, the camera must slowly circle the horse and rider showing all equipment and attire, including spurs and the whip if used. If the videographer is unable or unwilling to enter the arena to do the filming, the rider may turn the horse at G slowly, wait five seconds, then turn slowly to show the second side, and wait an additional 5 seconds to complete filming of the equipment.
- h) Drop the bridle and hold it so it does not obscure the curb strap or curb chain. Demonstrate that the curb strap or chain is flexible and is at least 1/2 inch wide. Make sure the judge can see all parts of the bridle, including bit and reins clearly.
- i) The test must be videoed from C, where the judge would normally be seated.
- j) The test may be called.
- k) Coaching during the test is NOT permitted.
- l) The natural background sound for the test must be audible. Tests with no sound at all will be eliminated.
- m) Bridle or saddle pad numbers are not permitted.
- n) Ridden tests may be submitted to ONLY ONE online show. A video of a test/ride from another competition that has already been judged will be eliminated. Any video suspected of having been filmed during another competition will be eliminated.
- o) All classes must be designated with a unique class number; no horse may be ridden more than once in any western dressage class with the same class number, including TOC (Test of Choice) classes.
- p) Non-compliance with the above guidelines will cause the test to be eliminated.

- q) Freestyles must have music in the background but not digitally added to the video itself.
- r) Show Management will review all submissions to ensure adherence to the guidelines as stated above. If a test is submitted that does not comply with these guidelines, Show Management will contact the exhibitor immediately via email or telephone.

WSD 17 AFFILIATE STRUCTURE

WSD 17.01 Overview of Regional Chapter Structure

- 1) WSDAC, as the umbrella organization, is responsible for setting national standards in all aspects of Western Style Dressage for members, chapters and affiliates. Without a parent organization establishing a universal protocol, there would be confusion and a general lack of unity in training, testing, showing and competing in this discipline.
- 2) WSDAC recognizes Regional Chapters based on geographical areas.

WSD 17.02 Purpose of Regional Chapters

- 1) The purpose of regional chapters is to make it possible for western dressage riders to have a group of like-minded, nearby individuals to participate in local shows clinics, demonstrations etc.
- 2) Canada is a huge country and there is no way that WSDAC can arrange for these types of activities countrywide. Furthermore, WSDAC is the steering organization, providing the structural foundation for the development of Regional Chapters.

WSD 17.03 Affiliation outside of Canada

- 1) WSDAC welcomes members and groups outside of Canada to become affiliated. For more information please contact WSDAC.

For full details on Regional Chapters please visit the website
www.westernstyledressage.ca.

WSD 18 RULE CHANGE PROCEDURES

WSD 18.01 Rule Change Procedures

- 1) Any member may submit rule change proposals.
- 2) Please see the below for an outline of the steps and a table listing deadlines.
- 3) When a subject is not addressed by these rules it must be addressed by the appropriate committee whose decision will stand as rule until the rule can be formally adopted.

WSD 18.02 Rule Change Process

- Step 1:** Every member of the Western Style Dressage Association of Canada has the right to propose amendments to the Rules. The deadline for member submissions for inclusion in the next year Rulebook is August 31.
- Step 2:** Suggestions for change will be reviewed by the applicable rules committees.
- Step 3:** A notice will be published announcing all proposed changes for Rulebook sections are available for review and comment on the website. An online submission form will be available on the website to send all comments and suggestions to WSDAC.
- Step 4:** The WSDAC rules committees and Board of Directors will review and finalize the changes.
- Step 5:** The new edition will be posted to the website by December 1 and become effective immediately.

RULEBOOK AMENDMENT PROCESS DEADLINES	
DEADLINE	REQUIREMENT
August 31	Deadline for members to submit rule changes to WSDAC
September 30	30-day member comment period ends
December 1	Posting date and effective date of new rulebook edition

NOTES: