



# 2024 LDA COMPETITIONS PRIZELIST

**MAY 26**

**JUNE 23**

**JULY 14**

**AUGUST 25**

**SEPTEMBER 15**

**ANDROMEDA EQUESTRIAN CENTRE –  
3433 CRAMPTON DR, MOSSLEY, N0L 1V0, ON**

1. [Equestrian Canada Required Statements](#)
2. [Contacts](#)
3. [Equestrian Canada Statement of Principles](#)
4. [Scratches and Refunds](#)
5. [Officials](#)
6. [Biosecurity](#)
7. [General Rules](#)
8. [Entries](#)
9. [Bronze](#)
10. [Silver](#)
11. [Western Dressage](#)
12. [Prizes](#)
13. [Andromeda Equestrian Centre](#)
14. [Directions](#)
15. [Sponsors](#)



## Equestrian Canada Required Statements

The London Dressage Association competition is sanctioned as a: Bronze competition of Equestrian Canada 11 Hines Rd , Suite 201, Ottawa, Ontario, K2K 2X1 and is governed by the rules of EC.” (A602.1)

The London Dressage Association competition is sanctioned as a: Silver competition of Equestrian Canada 11 Hines Rd , Suite 201, Ottawa, Ontario, K2K 2X1 and is governed by the rules of EC.” (A602.1)

“Per Article A801, every entry at an EC-sanctioned competition shall constitute an agreement by the person responsible that the owner, lessee, trainer, manager, agent, coach, driver or rider and horse shall be subject to the EC constitution and all rules of EC and any additional rules set by the competition...” (A602.7)

“Every class offered herein is covered by the rules and specifications of the current rules of EC and will be held and judged in accordance with the EC Rule Book.” (A602.2)

“Any horse entered in any class at a competition may be selected for equine medication control testing while at the event location.” (A602.5)

“When registering for EC sanctioned competitions, athletes must indicate the name of their coach on the entry form or specify that they are self coached. Coaches from other countries, must be in good-standing with their home federation and must declare/have proof of insurance. See Rules of Equestrian Canada, Section A, General Regulations, Article 102, Safe Sport Environments

“All horse entered in any class at a competition must have met the requirements of Article A519, Vaccinations. See Rules of Equestrian Canada, Section A, General Regulations, Article A519, Vaccinations.” (A602.8)

## Contacts

Competition Manager:	Aisling Laverty	<a href="mailto:admin@londondressage.com">admin@londondressage.com</a>
Sponsorship Coordinator:	Yvonne Rijk	<a href="mailto:admin@londondressage.com">admin@londondressage.com</a>

Emergency Vet:	Western Ontario Equine Services	(519) 666—3300
----------------	---------------------------------	----------------

First Aid:	Mosaic Medical	To be confirmed
------------	----------------	-----------------



## Equestrian Canada Statement of Principles

Statement of Principles – Horse Welfare. EC supports adherence to humane treatment of horses in all activities under its jurisdiction. 10. EC is committed to:

- a) upholding the welfare of the horse, regardless of monetary value, as a primary consideration in all activities;
- b) requiring that horses be treated with kindness, respect, and the compassion that they deserve, and that they never be subjected to mistreatment;
- c) ensuring that owners, trainers, and exhibitors and their agents exercise appropriate care and responsibility in the handling, treatment, and transportation of their horses, as well as horses placed in their care for any purpose;
- d) providing for the continuous wellbeing of the horse by encouraging routine inspection and consultation with health care professionals and competition officials to achieve the highest possible standards of nutrition, health, comfort, and safety;
- e) continuing to support scientific studies on equine health and welfare;
- f) requiring owners, trainers, and exhibitors to know and follow their sanctioning organization's rules, and to work within industry regulations in all equestrian competitions; and,
- g) reviewing, revising, and developing competition rules and regulations that protect the welfare of the horse.

In determining whether conduct or treatment is cruel, abusive, or inhumane, the standard to be applied will be the conduct or treatment expected of a reasonable person who is informed and experienced in equine training and exhibition procedures. Individuals who interact with horses must also adhere to EC's policies as they relate to horse welfare.

## Scratches and Refunds

- Refunds will be given for all scratches up to the show closing date.
- If you are unable to compete due to a horse's or rider's illness or injury and have scratched, the LDA will refund class fees and levies only upon presentation of a veterinary or medical certificate, (on official letterhead) for illness or injury. **Must be received within 5 days of the competition to receive a refund.**
- Scratches made day of the show will forfeit all show fees.
- All entries will be refunded in the event of a public health mandated closure.
- Substitution of horse to be made on a case-by-case basis at discretion of show manager.



## Officials

Show Date	Entry Closing Date	Judges	Steward
May 26	May 17	Lynne Poole (M) Alison Banbury (B)	Anne Welch (S)
June 23	June 14	Sara Alberni (B) Rebecca Schoenhardt (B)	Noelle Zondervan (B)
July 14	July 5	Vivian Hemsley (M) Nancy McMahon (B)	Noelle Zondervan (B)
August 25	August 16	Sara Alberni (B) Janet Henderson (B)	Lynne Poole (S)
September 15	Sept 6	Lynne Poole (M) Kellie Towers (B)	Noelle Zondervan (B)

\*One judge for each show will have a WSDAC certification or guest card

## Biosecurity

### Stall Cards and Temperature Taking

- Stall labels are available on our website to be printed. Printed copies will also be available at the venue.
- Stall labels must be completed for each horse, including the horse's name and 24-hour emergency contact information, and placed on the horse's stall door.
- You must check your horse's temperature twice a day and record it on the Horse Temperature Chart. A normal horse temperature is between 37.2 – 38.3° C. Any temperature over 38.8° C (102° F) must be reported to the secretary's office.

### In Stabling Area

- Sanitize hands frequently, especially after being in contact with your horse.
- Please dispose of manure in designated areas only.
- Do not submerge the end of a common use water hose into a water bucket.
- If your horse develops a fever or signs of illness, contact the secretary's office immediately.

### Best practices

- Ensure horses are healthy and properly vaccinated. Manage horses from the same barn or farm as a group, and stall together at the event.
- Minimize contact between riders, grooms, trainers, and coaches with horses that are not their own.
- Dedicate equipment to your horses and prevent sharing amongst horses.
- Ensure supplies for cleaning and disinfection are provided or brought to the event and the assigned stalls cleaned if necessary.

- Monitor horse health including body temperature daily while at the event. Report any abnormalities to the show coordinator.
- Avoid any form of direct (for example: nose-to-nose) and indirect (for example: common surfaces in wash stalls) contact between horses.
- Post competition, horses should be monitored closely for signs of illness.

## General Rules

- 2024 Equestrian Canada rules will apply. **It is the competitor's responsibility to know the rules.** Please refer to Equestrian.ca.
- 2024 Equestrian Canada Coaching Requirements will be followed.
- Judge and steward decisions are final.
- Protective headgear must be worn following A E 4.0. Protective headgear must be certified under one of the following standards: ASTM (American Society for Testing Materials), or SEI (Safety Equipment Institute, Inc.); BSI/BS EN (British Standards Institution); EN (European Union Standards; AS/NZS (Australian/New Zealand Standards; or CE VG1 01.040 201412
  - **Protective headgear must be worn when mounted on the show grounds, including for Western Style Dressage.**
- The LDA, the show committee, show officials, club members, property owners nor their relatives or employees or volunteers will in any way be responsible for damage, injury or loss to persons, horses or property of exhibitors or spectators. (Also see the release of Liability on the entry form.)
- Any horse on the show grounds and not entered in a class must pay the administration fee plus a class fee of \$45. A bridle tag number must be always worn for identification by the steward. All rules of competition and tack apply to non-showing horses. All the same requirements apply as to regular entrants (e.g., Sport License). Horse Recordings are not required.
- Any horse entered in any class at this competition may be selected for equine medication control testing while at the event location. (A602.5)
- All horses attending an LDA competition must submit proof of vaccination or a certificate of exemption from a veterinarian. Vaccine certificates can be uploaded with entry, proof of bill is sufficient.
- **All riders** must report to the steward immediately following their test for a tack check. Failing to report will result in elimination from that class. In the event of Random Tack checks it is the responsibility of the rider to check with the steward if they had been selected. For full information on Tack Checks see Dressage E. 4. 16.
- Park in designated areas only and warm up in designated areas only.
- Competition numbers must be always worn and visible while on the show grounds or risk elimination from the show. The handler may wear or carry the number.
- When arriving and leaving the grounds, be respectful of horses competing in the ring. Respect all signage.
- Lunging is allowed in designated areas only. Please see EC rules for specifics regarding Lunging procedures.
- The London Dressage Association reserves the right to amend these rules at any time.

- Lil' LDA horse and riders are exempt from possessing a Bronze Sport License. Lil' LDA horses are not restricted
- Test Of Choice is offered in each level, including Western Style Dressage.
  - TOC classes can be used to qualify for the Silver Championships and the LDA Championships
- BYOBT – Bring your own **bridle tag**. The LDA will have some available for purchase if you forget.

## Entries

- Entries are accepted on a first come first served basis.
- Entries can be made online using the Compete Easy software at Competeeasy.com
  - See our forms sections for helpful step by step instructions of how to enter
  - Forms of payment will be through credit card or PayPal.
- Show office is virtual.
- Entries must be submitted by 6pm of the close date. The closing date is posted on londondressage.com and on our social media sites.
- Incomplete entries will not be accepted by the CompeteEasy software.
- Late entries will be subject to a \$20 late fee and will only be accepted for 24 hours post the closing date and time.
- Minor changes may be made at the discretion of the show organizer.
- Miscellaneous classes (Lil' LDA, Pas De Deux) are part of the Bronze show but are open to entries in both the Silver and Bronze shows. These classes are not rated for EC awards.
- Entries must be signed by the **Person Responsible** (A801.5) who must be an EC Sport License Holder (A801.6). According to A214.2, parents and guardians are entitled to sign their children's entry forms without being EC members or license holders. Note, however, that the horse owner must hold a valid EC Sport License.
- Both Silver and Bronze competitors may enter the Miscellaneous classes (Pas-de-Deux, Masters Test of Choice).
- For Bronze and Silver entries, both owner and rider must be members in good standing with EC and the OE. Proof of EC, and OE memberships for rider and owner must be submitted with the show entry.
- For Silver entries, a horse recording must be provided with entry.
- For information regarding maximum number of levels/tests/classes per horse per day, please reference **Article E 7.11.9**.
- Lil' LDA riders may not cross enter in other divisions.
- Para Riders, please submit a copy of your dispensation certificate with your entry.
- Hors Concours may be allowed, space dependent. Note E.7.11.11 explains the rules that govern Hors Concours rides.
- Entry fees are non-refundable as per "Scratches and Refunds".
- LDA reserves the right to refuse entry to any person or horse for any reason.

Entry Closing Dates			
	Date	Closing Date	Ride Times Posted
LDA #1	May 26	May 17	May 23
LDA #2	June 23	June 14	June 20
LDA #3	July 14	July 5	July 11
LDA #4	August 25	August 16	August 12
LDA #5	Sept 15	September 6	September 12

## Bronze

### Class Info

		Technical	Freestyles	Restrictions	Sport License
<b>EC TESTS</b>	Junior	Intro-4 <sup>th</sup>		Under 18 yrs old	Yes
	Adult Amateur	Intro-4 <sup>th</sup>		Amateur Status	Yes
	Open	Intro-4 <sup>th</sup>	Tr-4 <sup>th</sup>		Yes
<b>FEI TESTS</b>	Children/Jrs/Pony	Team + Individual		Age restrictions, see FEI.org	Yes
	Seniors	PSG-Int II	PSG- Int II		Yes
<b>MISC. TESTS</b>	Lil' LDA*	W only - WT		Under 12 yrs old	No
	Pas De Deux*	Tr-4 <sup>th</sup>			No

\* Miscellaneous classes – not rated for EC awards

<b>Bronze Fees</b>	
EC Tests	per class \$45
FEI Tests	per class \$55
Lil' LDA	per class \$45
Pas de Deux	per horse \$20
Admin	\$40
Drug	\$4
DC Levy	\$10
Medic	\$15
Non-Member of LDA	\$20
CE Processing	5.5% of total
Stabling	\$65 + HST
Late Entry	\$20





## Tests

Current tests can be found on [equestriancanada.ca](http://equestriancanada.ca), [londondressage.com](http://londondressage.com), or [inside.fei.org](http://inside.fei.org)

## Ring Size

Lil' LDA – 20 x 40 arena

Intro & Training – 20 x 40 or 20 x 60 arena

1<sup>st</sup> and up – 20 x 60 arena

Freestyles/Pas De Deux – 20 x 60 arena

## Tack Check

**Immediately** after each class, competitors **must report to the steward** for a tack check.

## Drug Testing

Any horse entered in any class at a competition may be selected for equine medication control testing while at the event location. (A602.5)

## Lil' LDA

- Lead line riders must be under the age of 12 by Jan 1<sup>st</sup>
- Lead line handlers are not required to be in full show attire, but encouraged to dress neatly
- Lead line handlers are required to wear a helmet

## Freestyles/Pas De Deux

- Sound checks are available at the start of the day and at lunch
- Music for freestyles/musical classes must be emailed to the show organizer in an **MP3** file format at least 2 hours prior to the start of the class. Before show day would be preferred.

## Para Tests

- If you wish to ride a Bronze Level EC National Para Test, please contact show administration.

## Test Of Choice

- A Test of Choice (TOC) is offered in each level. All divisions compete in the same class. All tests at the same level are included in one class. TOC classes can be used to qualify for LDA Championships.

## Silver

### Class Info

		Classes	Freestyles	Restrictions	Sport License
<b>EC TESTS</b>	Junior	Intro-4 <sup>th</sup>		Under 18 yrs old	Yes
	Adult Amateur	Intro-4 <sup>th</sup>		Amateur Status	Yes
	Open	Intro-4 <sup>th</sup>	Tr-I I		Yes
<b>FEI TESTS</b>	Children/Jrs/Pony	Team + Individual		Age restrictions, see FEI.org	Yes
	Seniors	PSG-Int I	PSG- Int I		Yes

Silver Fees	
EC Tests	per class \$45
FEI Tests	per class \$55
Admin	\$40
Drug	\$8
DC Levy	\$10
Medic	\$15
Non-Member of LDA	\$20
CE Processing	5.5%
Stabling	\$65 + HST
Late Entry	\$20



### Tests

Current tests can be found on [equestriancanada.ca](http://equestriancanada.ca) or inside [fei.org](http://fei.org)

### Ring Size

Intro & Training – 20 x 40 or 20 x 60 arena

1<sup>st</sup> thru I II – 20 x 60 arena

Freestyles – 20 x 60 arena

### **Tack Check**

**Immediately** after each class, competitors **must report to the steward** for a tack check.

### **Drug Testing**

Any horse entered in any class at a competition may be selected for equine medication control testing while at the event location. (A602.5)

### **Freestyles**

- To ride a silver freestyle, the horse/rider must have obtained a minimum technical test score of 60% at that level at the same or a prior competition (E.10.6).
- Sound checks are available at the start of the day and at lunch.
- Music for freestyles/musical classes must be emailed to the show organizer in an **MP3** file format at least 2 hours prior to the start of the class. Before show day would be preferred.

### **Para Tests**

- If you wish to ride a Silver Level FEI Para Test, please contact show administration.

### **Test Of Choice**

- A Test of Choice (TOC) is offered in each level. All divisions compete in the same class. All tests at the same level are included in one class. TOC classes can be used to qualify for the LDA Championships.

# Western Style Dressage

## Class Info

		Classes	Restrictions	Core Program	Bronze Sport License
<b>WSDAC TESTS</b> NON-GAITED	Junior	Intro-L4	Under 18 yrs old	Yes	Yes
	Amateur	Intro-L4	See Rulebook	Yes	Yes
	Pro	Intro-L4		Yes	Yes
<b>PERIPHERAL CLASSES*</b>	Freestyle	Basic-L4		No	Yes

\* Peripheral Classes are not eligible for National Points Program or Lifetime Horse Performance Points

To be eligible for national awards, competitors and horses must be members registered with WSDAC by the day of the show.

### Western Style Dressage Fees

WSDAC Test	per class \$45
Admin	\$40
Drug	\$4
WSDAC Levy	\$5
Medic	\$15
Non-Member of LDA	\$20
CE Processing	5.5% of total
Stabling	\$65 + HST
Late Entry	\$20



## Tests

Current tests can be found on <https://westernstyledressage.ca>

### Ring Size

Intro to Basic – 20 x 40 m or 20 x 60 m arena

All Freestyles – 20 x 60 m arena

Level 1-4 – 20 x 60 m arena

### Tack Check

**Immediately** after each class, competitors **must report to the steward** for a tack check.

### Drug Testing

Any horse entered in any class at a competition may be selected for equine medication control testing while at the event location. (A602.5)

## Freestyles

- Sound checks are available at the start of the day and at lunch.
- Music for freestyles/musical classes must be emailed to the show organizer in an **MP3** file format at least 2 hours prior to the start of the class. Before show day would be preferred.

## Test Of Choice

- A Test of Choice (TOC) is offered in each level. All divisions compete in the same class. All tests at the same level are included in one class. TOC classes can be used to qualify LDA Championships.

## Prizes

### Ribbons

Ribbons will be awarded to 6<sup>th</sup> place in all classes. No ribbons or prizes will be awarded for scores less than 50%. Note rule E 9.9: If there is only one competitor in the class, the following percentages apply to determine the placing: 1<sup>st</sup>, 63% or higher; 2<sup>nd</sup>, 60% to 62.9%; 3<sup>rd</sup>, 55% to 59.9%; No ribbons or prizes shall be awarded below 3<sup>rd</sup> position.

Ribbons can be picked up via self-serve at the secretary booth.

### High Point

3 high point awards are given for the overall highest score for the divisions: Intro, Training-1st, 2nd + at each show. Awards can be picked up at the following show or arrangements can be made for pick up.

### Li'l LDA

High point and best turned-out awards will be awarded at each show.

**For information on year end awards and bursaries that LDA offers please visit our website for more information.**

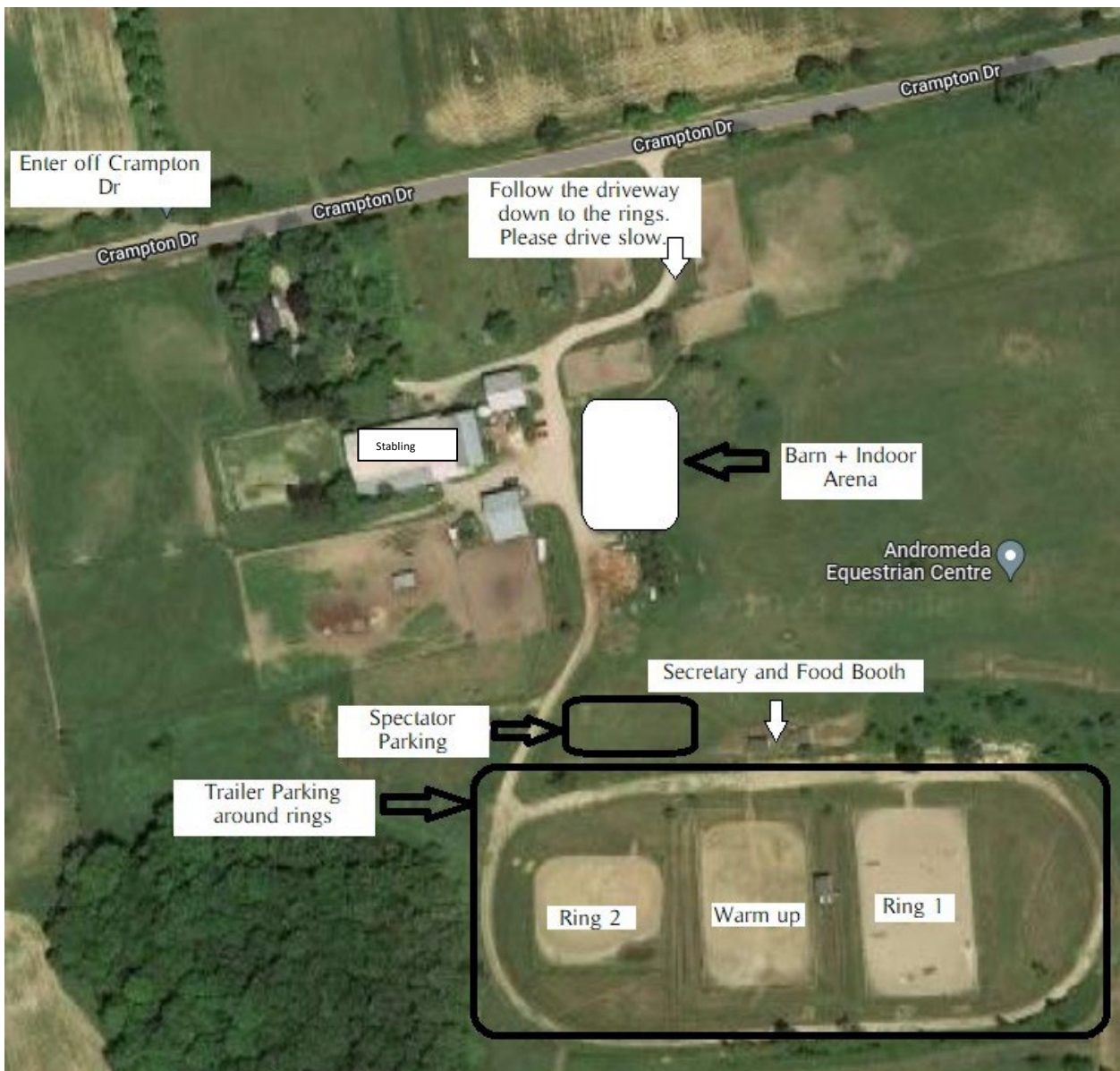


## Andromeda Equestrian Centre

The farm is located on 50 acres of rolling farmland, in a quiet area southeast of London, central to the communities of Belmont, Dorchester, and Ingersoll.

Easy access to the 401 highway makes AEC within 15 minutes of the city limits of London.

There are three outdoor riding rings located in a picturesque valley. Two show sand rings and one fenced warm up ring are centrally placed on the infield of our 1/4 mile racetrack. This quiet secluded location makes it a wonderful place for the horse and rider to school or have a lesson.



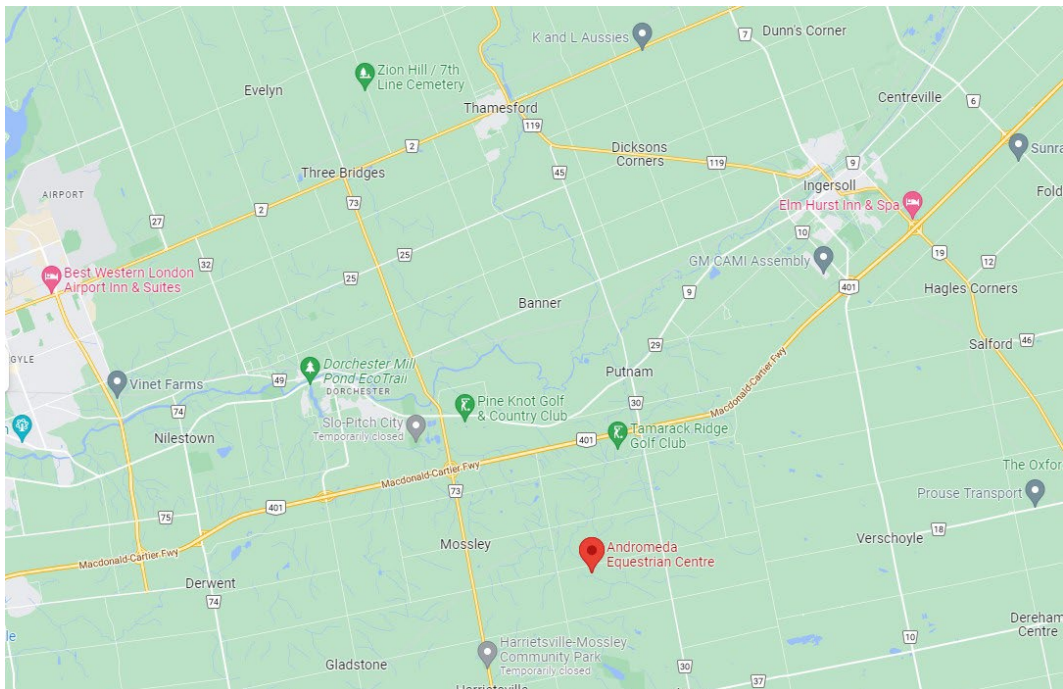
## Directions

### Traveling East on the 401

1. Follow 401 East
2. Take exit 203 for country road 73/Elgin Road toward Aylmer
3. Turn Right onto Elgin Road/County Road 73
4. Turn Left onto Crampton Drive
5. Andromeda Equestrian Centre is on the right

### Traveling West on the 401

1. Follow 401 West
2. Take exit 208 for Country Road 30/Putnam Road towards Putnam/Avon
3. Turn Right onto Putnam Rd/ Middlesex County Rd 30
4. Turn Right onto Crampton Drive
5. Andromeda Equestrian Centre is on the left



## Sponsors

TBA

See you in the sandbox