

Seeking Your Opinions on Our Current and Future Operations



Andy Lee, Fire Chief

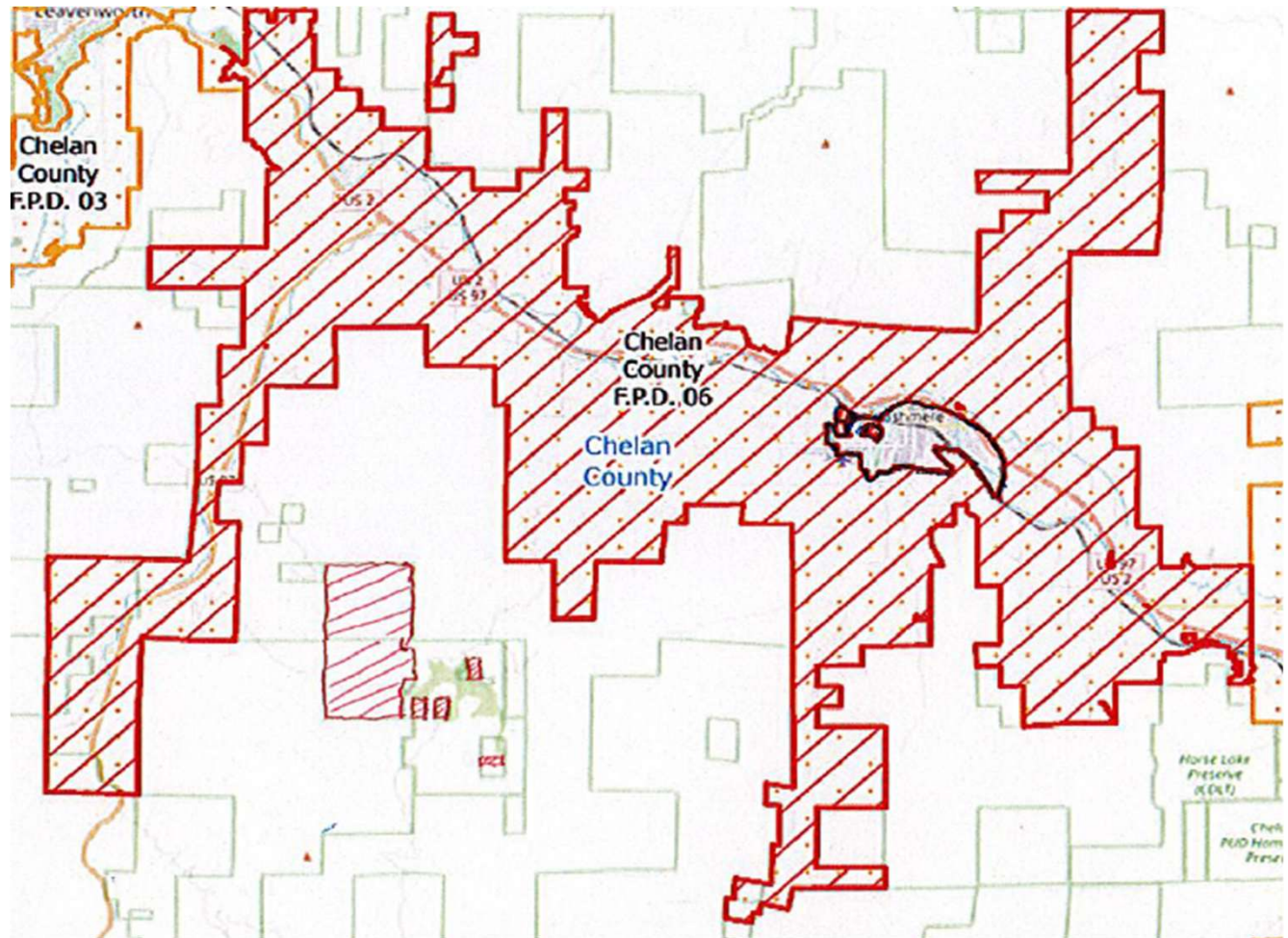
Michelle Mazzola, Resource Solutions LLC



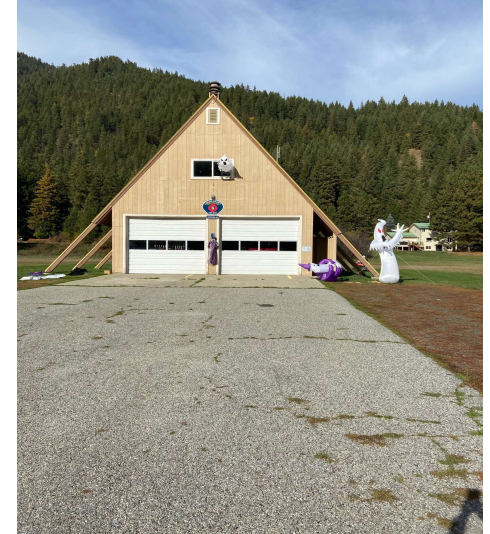
Who We Are



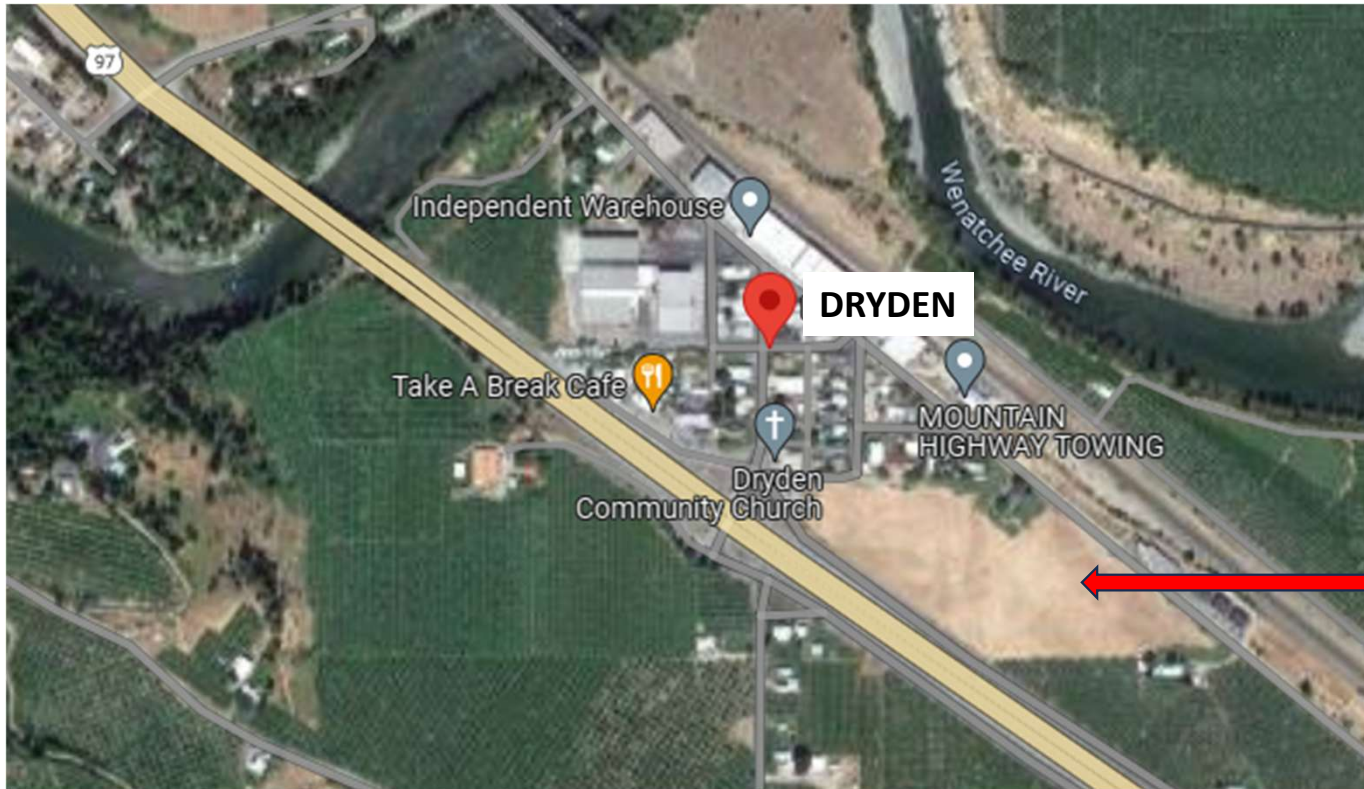
Chelan FD #6 Service Area



We operate out of
four fire stations
located in
Dryden, Monitor,
Peshastin and
Valley High.



Chelan County Fire District 6 has Acquired Land for a Future Regional Fire Station



Who We Are

60 volunteer (unpaid) fire fighters are serving your community



Services we
provide to our
community.



Motor Vehicle Accident/Extrication Response



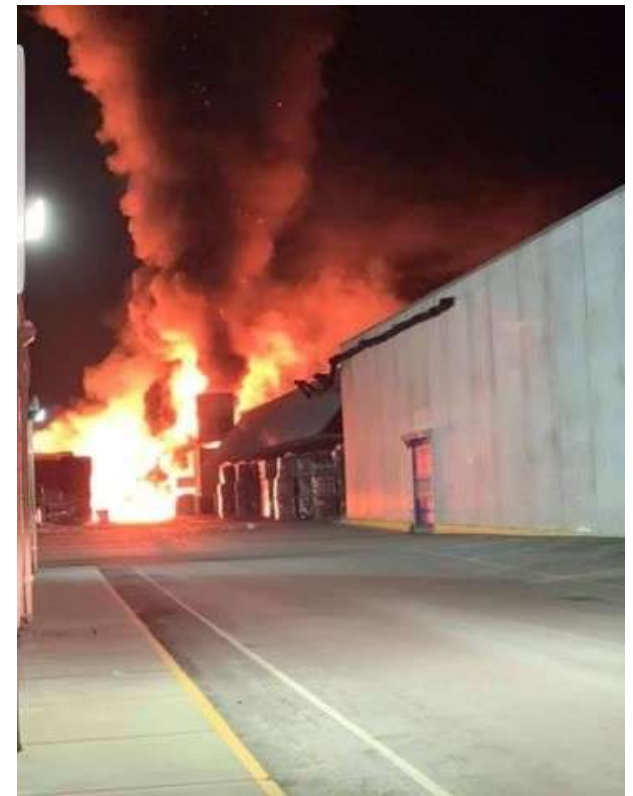
Wildland and Structural Fire Response



Emergency Medical Response

Our Demographics

- Protecting 7,314 residents
- Encompassing 45 square miles
- Safeguarding \$1.4 Billion in residential & commercial property (65% increase in the past 4 years).
- Responding to 1,889 emergency calls in the past 3 years (a 27% increase over past 4 years)



Who We Are NOT

We are not a Federal Agency

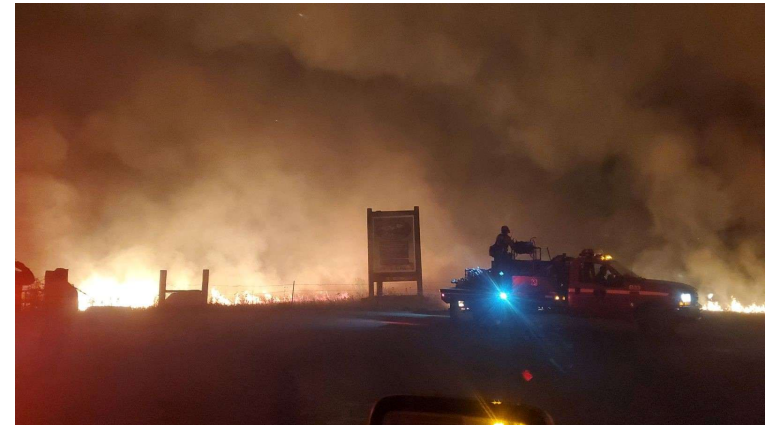
We are not a State Agency

We are not a County Wide Agency



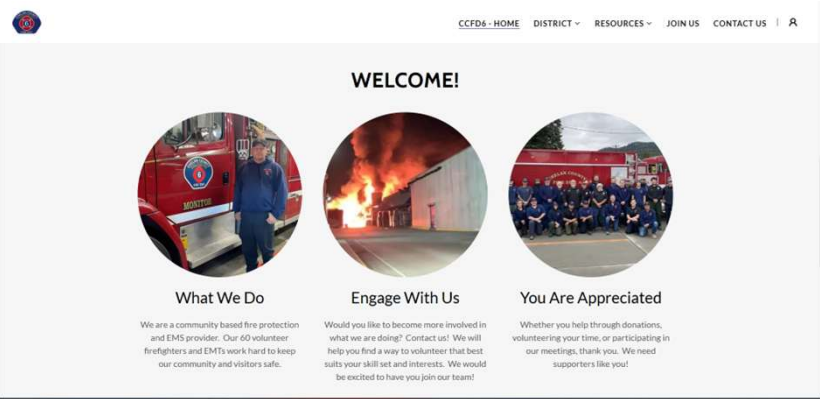
Who We Are

We are your local community-driven fire district, totally funded by your tax dollars



Successful Strategic Planning and Community Engagement in 2024

Website:



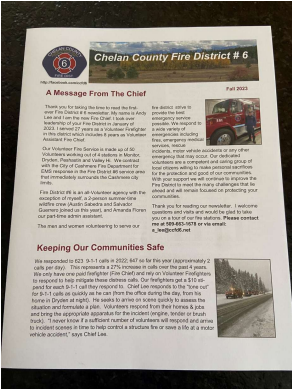
<https://chelanfd6.org/>

Strategic Plan:



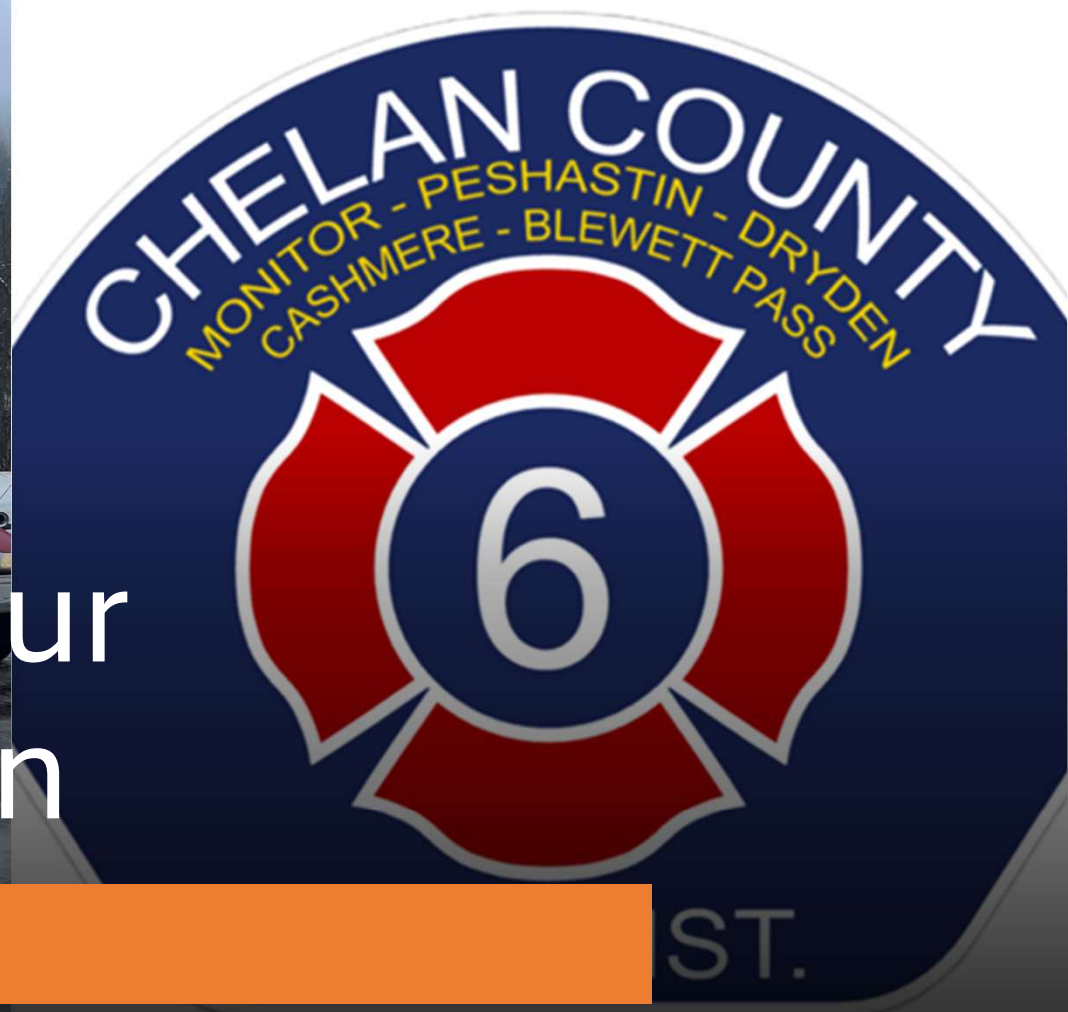
<https://www.facebook.com/CCFD6/>

Newsletter:

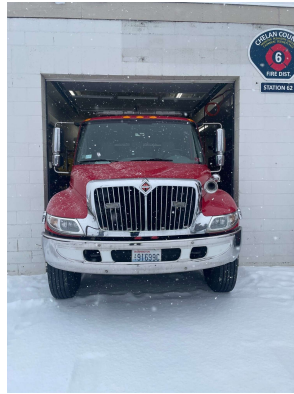




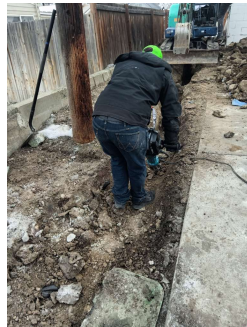
A Snapshot of Our
Current Situation



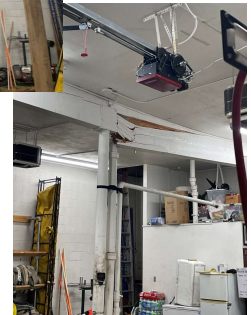
85% of all Firefighter 9-1-1- responses originate from the Dryden Fire Station



2025 water main break shut down operations.

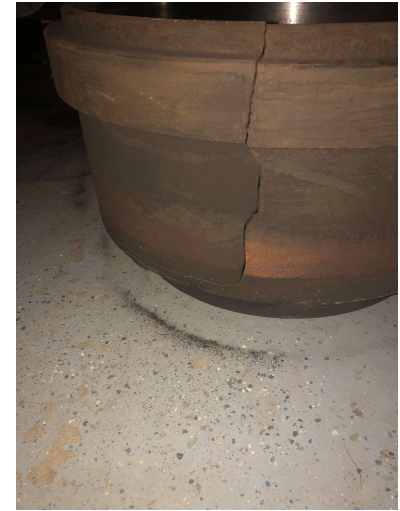
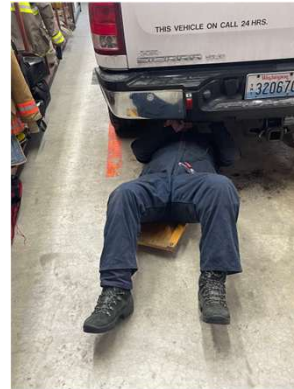


2023 beam collapse resulting from snow load.





Our aging engines 30+ years-old repeatedly experience operational breakdowns



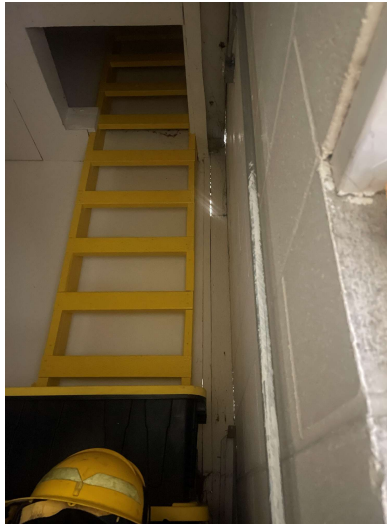
- We are regularly forced to improvise repairs to apparatus & equipment in order to provide emergency response.



Our aging fire stations need renovation, if we keep them



Valley Hi



Monitor



Peshastin



Our Aging Equipment Compromises Our Ability to Respond

Jaws of Life (30-50 years old) are not built for use on modern automobiles resulting in delayed medical assistance to victims





Our Aging Equipment Compromises Our Ability to Respond

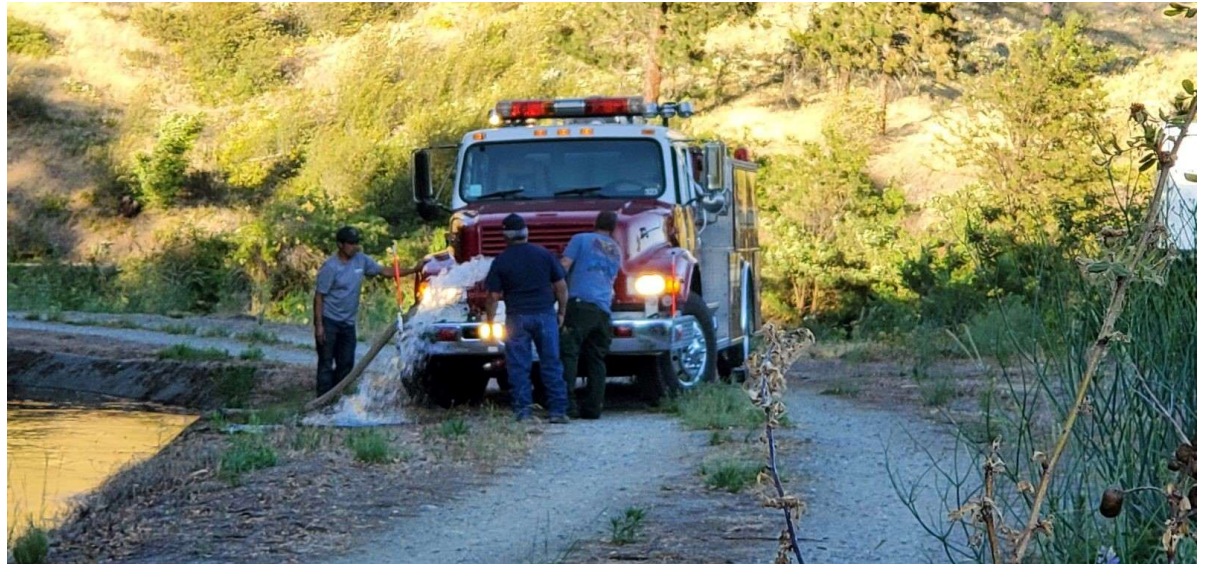
Firefighter Personal Protective Equipment (20+ years old) – is does not meet current flame-retardant standards and is mandated to be replaced at 10 years.





Our Aging Equipment Compromises Our Ability to Respond

Firefighting Hose (25-40 years old) is subject to blowouts and pin holes.



Volunteer Firefighter Stipends

Your Volunteer Firefighters receive a Stipend of \$10 for responding to each of your 9-1-1 emergency calls.

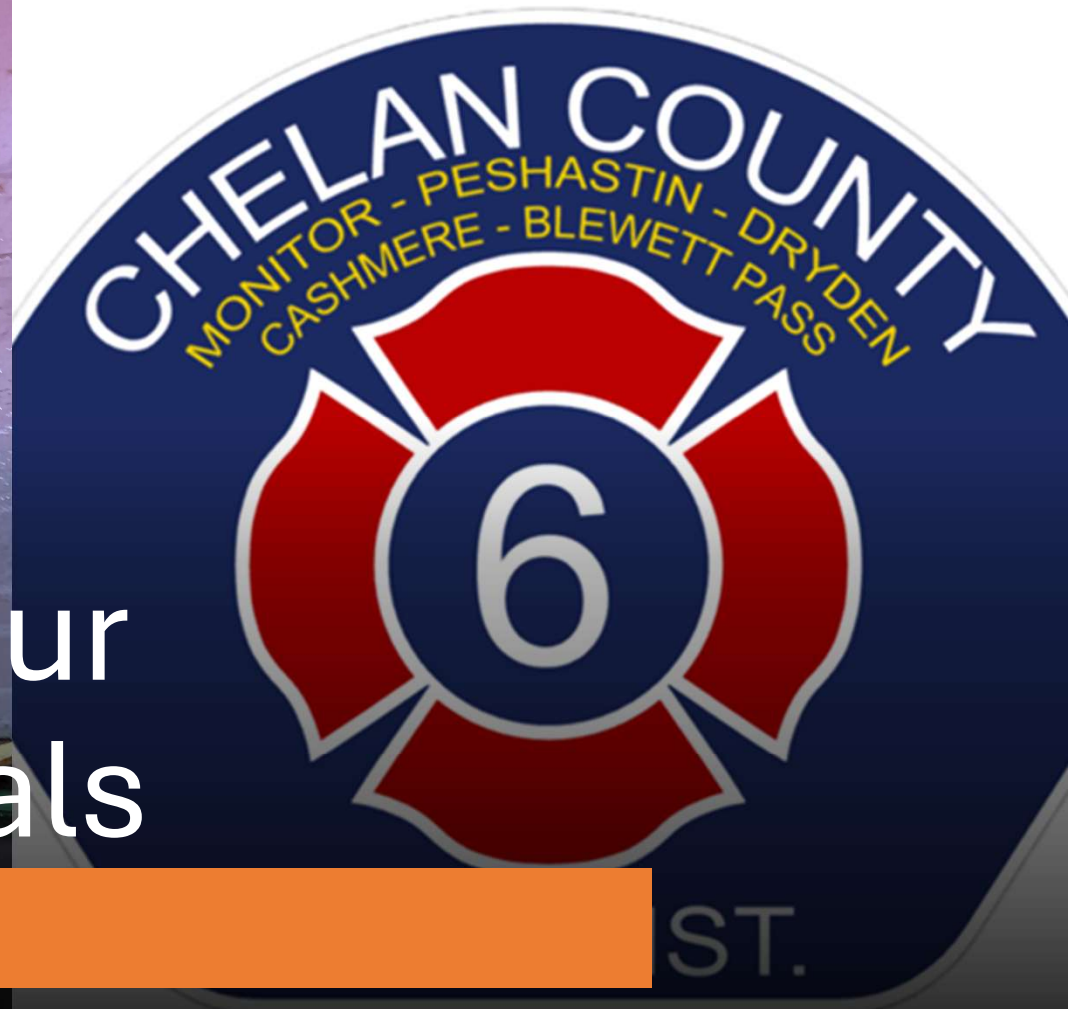


Volunteer Firefighters in Chelan County Fire District #3 - Leavenworth Receive Stipend payments as follows:

Sleeper Shift	\$65 per shift
Training Events	\$30 per event
Shift Coverage	\$135 day shift/\$60 half day

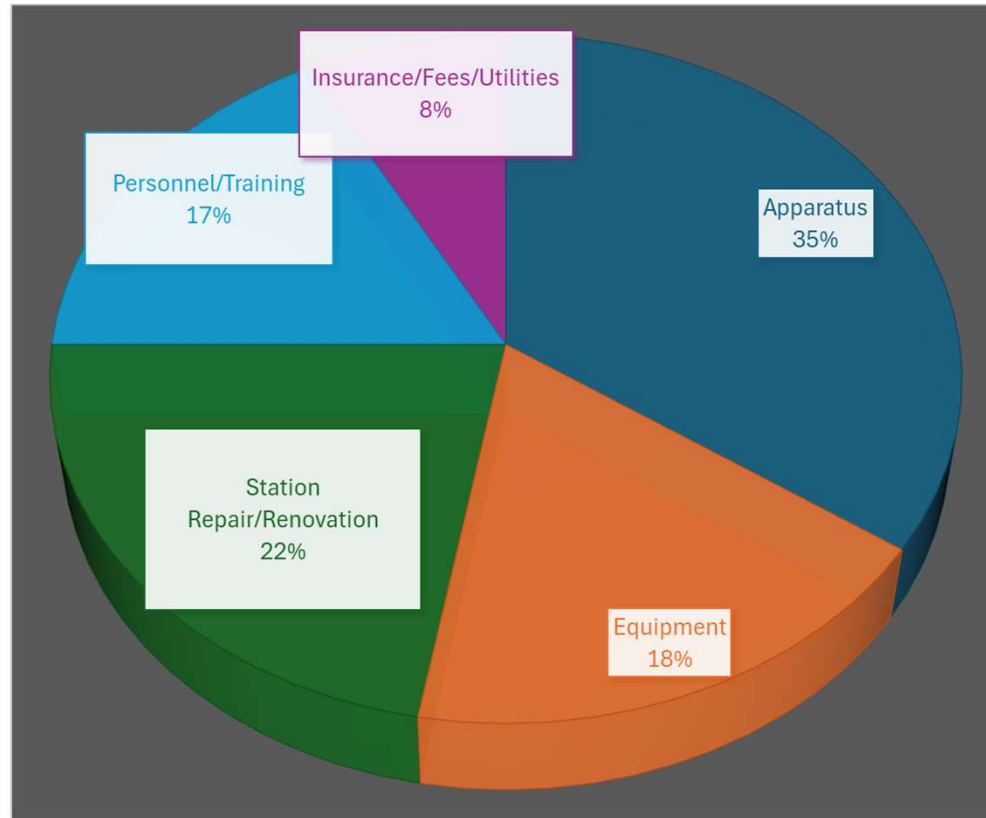


A Snapshot of Our Current Financials





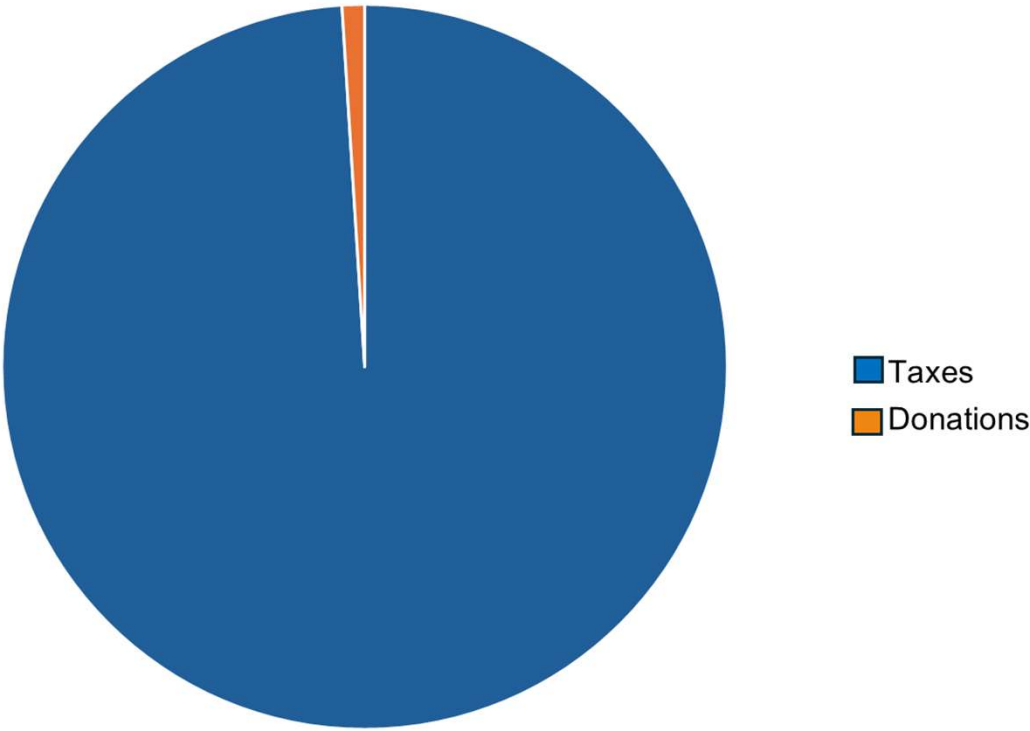
Your Fire District is experiencing a funding gap of \$10,780,600 in Unmet Mission Critical Needs



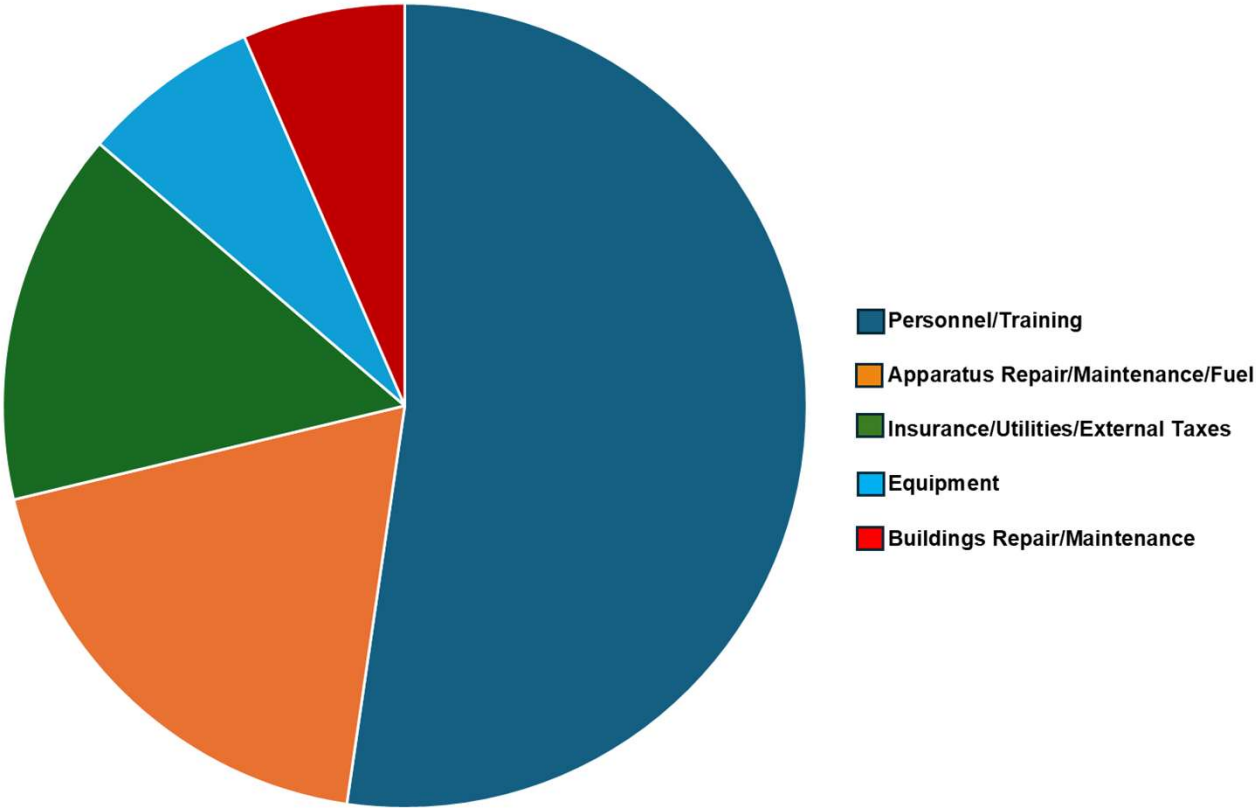
Unmet Mission Critical Need shortfall does not include funding necessary for construction of new regional fire station.

Our Funding Sources

Annual Operating Budget ~\$425,000



How we spend our \$425,000 Operating Budget



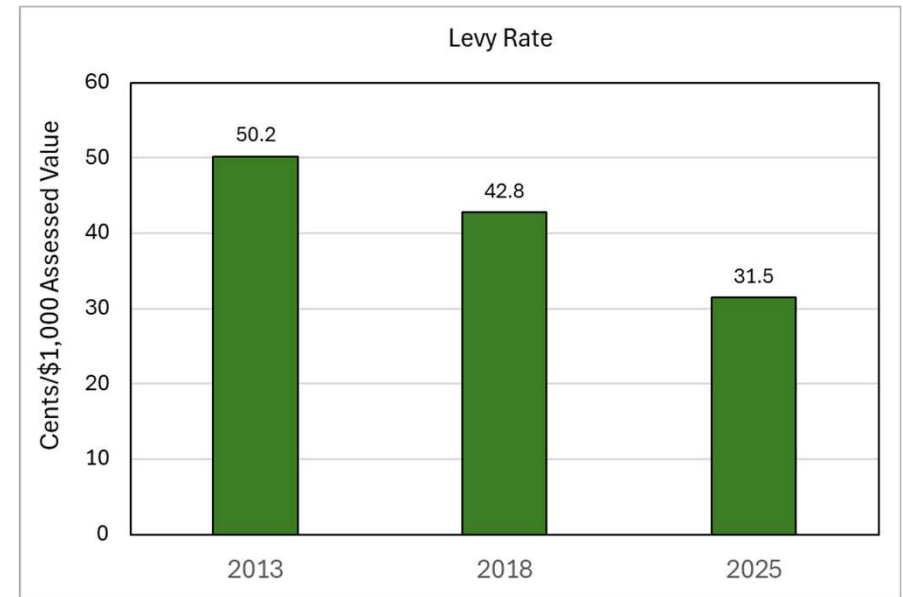
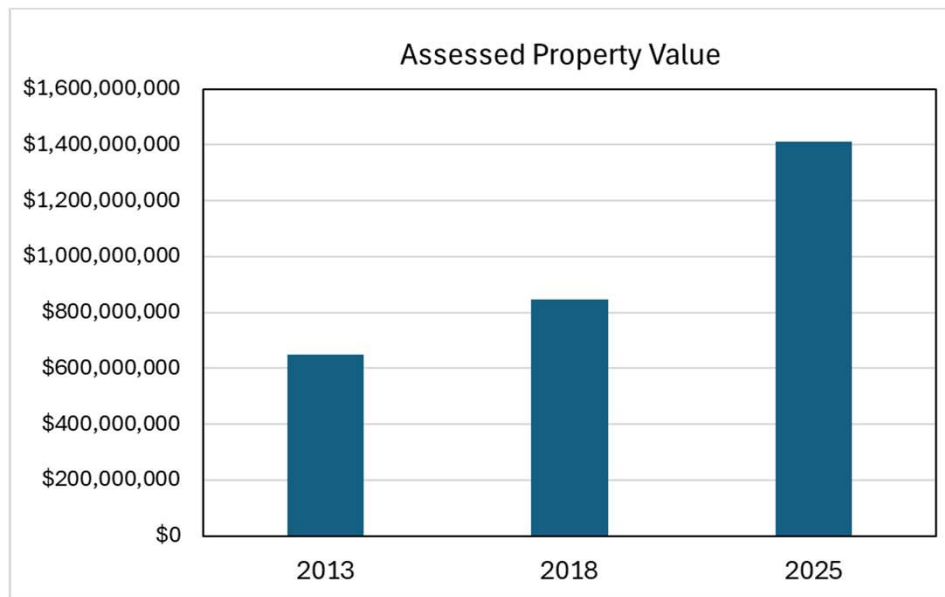
Funding to Deliver Fire Protection is Provided Through Local Taxes



- Current Fire District #6 levy rate is 31.5 cents per \$1,000 in assessed property value.
- This is the lowest levy rate among any Fire District in Chelan or Douglas County (rates range among districts from 31.5 cents to \$1.50/\$1,000).
- Dollar Amount From Tax Levy Can Only Increase 1% From Previous Years Levy (\$4,395 in 2025).
- As a result, our available funding has remained nearly static.

The Amount of Tax Collected by Chelan County Fire District #6 Is FIXED:
(the amount collected can only increase a maximum 1% per year)

Therefore – as property value assessments go up the levy rate must go down:



Cost of Providing Services Exceeds Tax Collection



At the **current levy rate**, the cost of a single emergency response is greater than the annual tax collected (= \$252) from a resident residing in a home valued at \$800,000.

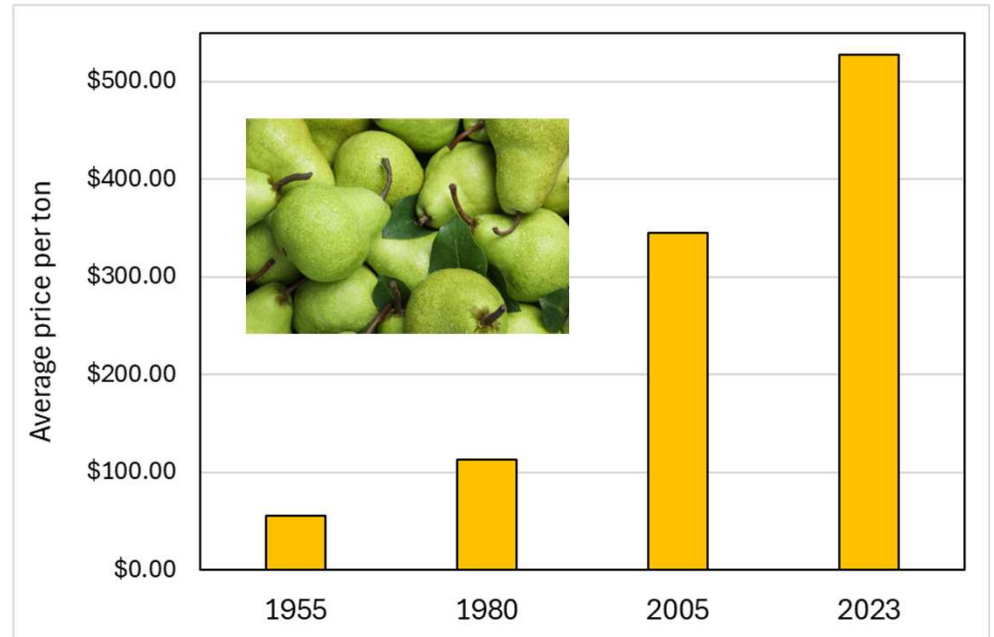
$\$150 \text{ per hour per truck with 2 people} \times 2 \text{ aid vehicles} \times 2\text{-hour average response} = \600



Our LEVY RATE Established in 1955 has NOT Increased

In comparison, the value of the pear crop in Washington State has increased from an average price of \$55.20 per ton in 1955 to \$528 per ton in 2023.

Source: USDA National Agricultural Statistics Service

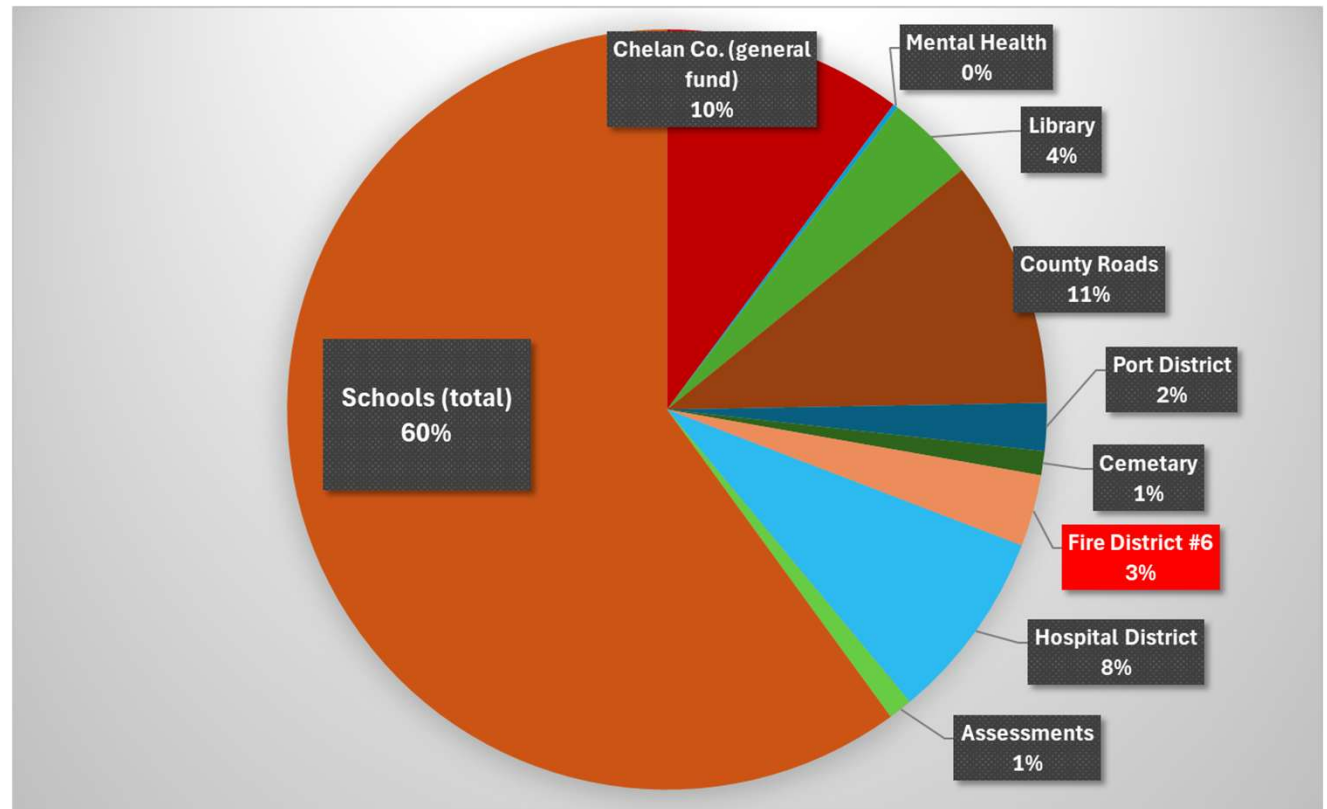


Value of the Washington d'Anjou crop was \$3.50 /box in 1955 and is \$34-\$38/box in 2025.



Chelan County Tax Distribution

A small fraction of your property tax bill supports Chelan County Fire District #6



(This example is representative of tax data for residences located in Cascade School District)

Slide 26

MM0

I would move this slide up in the presentation to just after the slide "Our Funding Sources"

Mark Mazzola, 2025-02-26T19:45:04.389



Our LEVY RATE Established in 1955 has NOT Increased



1955



2025

Since 1955, inflation has resulted in a cumulative price increase of 1,077%

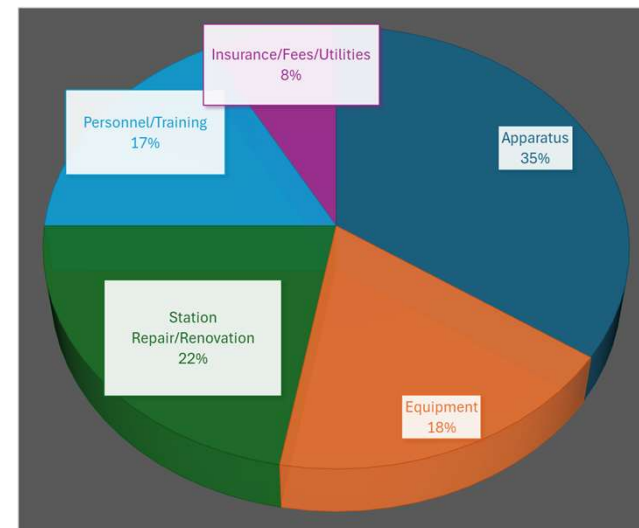
A Comparison of Local Fire District Property Tax Levy Rates



Fire Levy Rate = 0.315/\$1,000 assessed value
(a small proportion of your tax bill)

<u>Assessed Value</u>	<u>Fire District #6 Tax</u>	<u>Fire District #3 Tax</u>	<u>Fire District #7 Tax</u>
\$200,000	\$63.00	\$132.00	\$175.36
\$400,000	\$126.00	\$264.00	\$350.72
\$800,000	\$252.00	\$528.00	\$701.44
<hr/>			
<u>Total 2025 Tax Funding</u>	\$ 441,321	\$1,582,003	\$4,310,436

*Insufficient funding
over the past 30
years has led to an
expansive list of
Unmet Mission
Critical Needs*



\$10,780,600 in Unmet Mission Critical Needs

**Without
Increased Tax
Funding,
Changes for 2026
May Include:**





Financial Contingency Plan: Operational Changes

EMS Service Reductions Are Imminent:

- EMS service responses suspended throughout our fire district.
- Termination of Medical Aid contract with Cashmere Fire Department. This contract provides service to residents adjacent to Cashmere including Monitor, Sleepy Hollow, etc.
- Termination of all fire and EMS responses to areas immediately adjacent to but outside of Chelan County Fire District # 6 (Olalla Canyon, Blewett Pass, Jude Canyon, etc.).





Financial Contingency Plan

Additional Changes to Operations

- Possible suspension of all Motor Vehicle Accident responses which account for 17% of all service calls received by Chelan County Fire District #6.
- Closure of the Valley Hi Fire Station is probable. Closure of the Peshastin Fire Station will require further review.



How Do We Compare With A Similar Sized Fire District



Chelan County Fire District 6



Grant County Fire District 8 (Mattawa)

Annual Call Volume:	647	638
Assessed value of property:	\$1.4 billion	\$1.03 billion
Service Area:	45 sq. miles (+ Blewett Pass)	248 sq. miles
Population Served:	7,314	8,142

How Do We Compare With A Similar Sized Fire District



Chelan County Fire District 6



Grant County Fire District 8 (Mattawa)

Annual Budget:

\$ 425,000

\$2,025,075

Personnel:

Fire Chief (paid)
60 Volunteer (unpaid) fire fighters

Fire Chief (paid), 6 career (Paid) Firefighters
15 Volunteer Firefighters
6 Resident Firefighters

Infrastructure:

Four un-staffed Fire Stations

One staffed (24/7) station and
two un-staffed Fire Stations

How Do We Compare With A Similar Sized Fire District



Chelan County Fire District 6



Grant County Fire District 8 (Mattawa)

Assessed Property Value

\$200,000

\$400,000

\$800,000

Fire District #6 Tax

\$65.38

\$130.76

\$261.52

Grant Co. Fire District #8 Tax

\$200.00

\$400.00

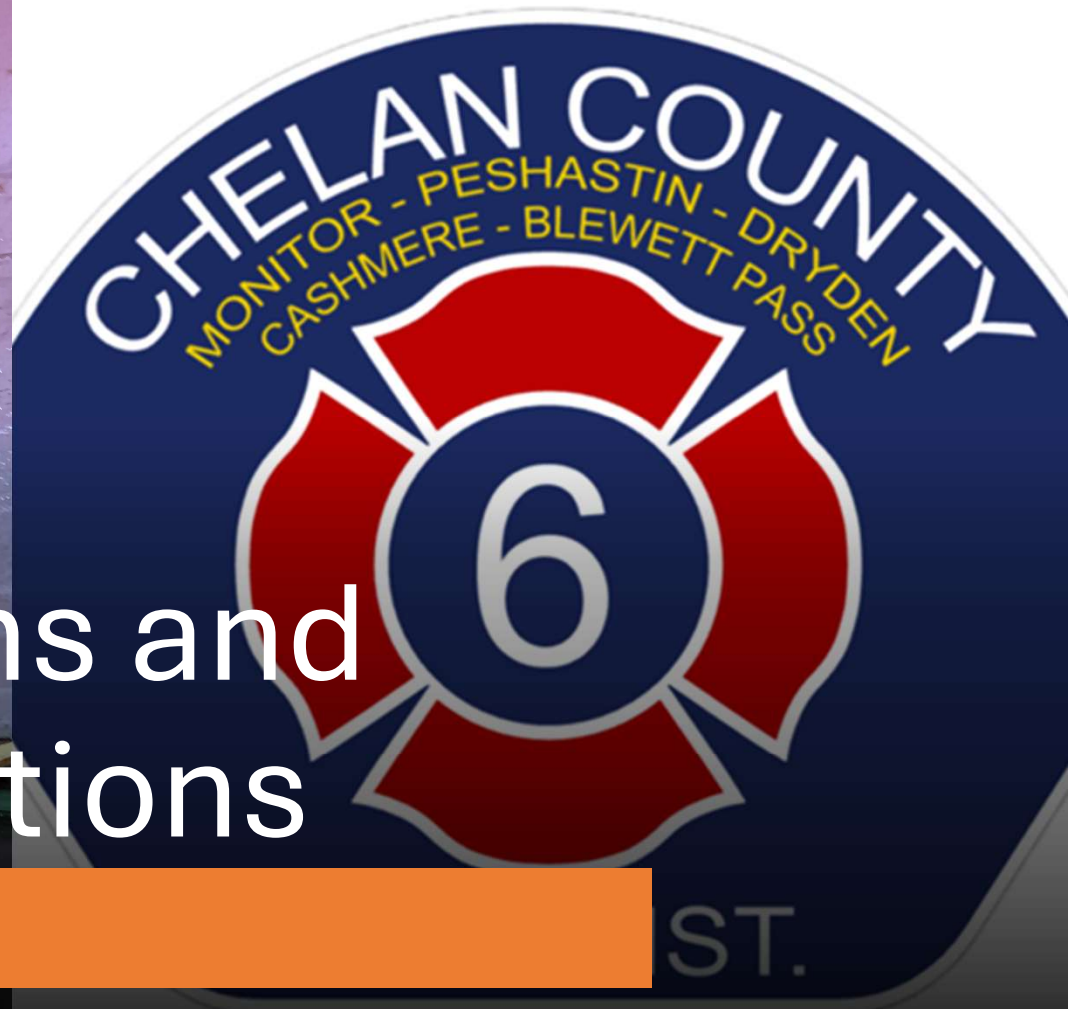
\$800.00

How Do We Compare With A Similar Sized Fire District





Financial Options and Resulting Operations





Annual Funding Available Based Upon Indicated Levy Rate

Levy Rate	Proposed Operating Budget	Total Funding	Annual Funding Available to Address \$10,780,600 Unmet Need
31.5 cents/\$1,000	\$750,000	\$441,321	\$0 (current funding does not meet operating budget needs)
80 cents/\$1,000	\$750,000	\$1,120,000	\$370,000
\$1.40/\$1,000	\$750,000	\$1,960,000	\$1,210,000



Funding Available Over 6-Years to Address \$10,780,600 in Unmet Mission Critical Needs

Levy Rate	Annual Funding Available to Address Unmet Mission Critical Needs	Total 6-Year Funding to Address Unmet Mission Critical Needs	Remaining Unmet Mission Critical Need After 6-years
31.5 cents/\$1,000	\$0	\$0	\$10,780,600+
80 cents/\$1,000	\$370,000	\$2,220,000	\$8,560,600
\$1.40/\$1,000	\$1,210,000	\$7,260,000	\$3,520,600

Estimated Homeowner Monthly Fire District Levy



<u>Assessed Value</u>	<u>0.315/\$1,000 levy</u>	<u>0.80/\$1,000 levy</u>	<u>\$1.40/\$1,000 levy</u>
\$200,000	\$5.25	\$13.33	\$23.33
\$400,000	\$10.50	\$26.67	\$46.67
\$800,000	\$21.00	\$53.33	\$93.33

Contact Information:

Michelle Mazzola

509/663-1678

Email:
Michelle@ResourceSolutionsNow.com

Andy Lee, Fire Chief

509/663-1678

Email: a_lee@ccfd6.net



Website:
<https://chelanfd6.org/>