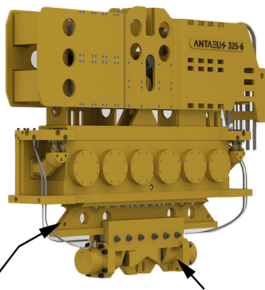
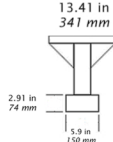
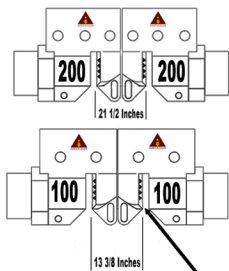
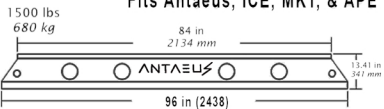


# Caisson Beams & Clamps



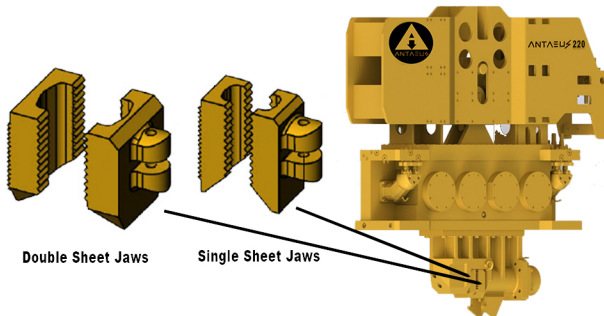
Heavy Duty "T-Bar Beam & Two Model 200 Caisson Clamps

Fits Antaeus, ICE, MKT, & APE



Saw Tooth Mount Caisson Jaws

# Sheet Pile Clamps

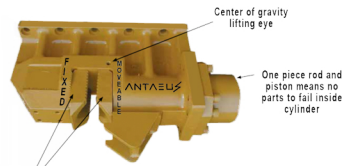


Double Sheet Jaws

Single Sheet Jaws

# Super Heavy Duty Sheet Clamps

Fits Antaeus, ICE, MKT, & APE



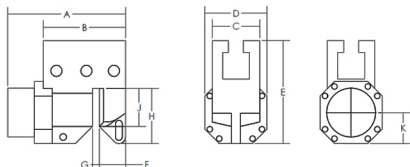
Fixed and Moveable Jaws labeled

## ANTAEUS Model 100 Caisson Clamps for Vibratory Driver/Extractors 4400 inch pounds or less

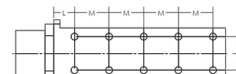
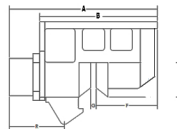
	A	B	C	D	E	F	G	H	J	K
100	27.63 in 702 mm	18.63 in 473 mm	11 in 279 mm	14 in 356 mm	23.38 in 594 mm	6.7 in 170 mm	1.5 in 38 mm	10.88 in 276 mm	6.87 in 175 mm	7.25 in 184 mm
100		1,150 lbs 520 kg		8 in 203 mm			2.25 in 57 mm		113 short tons 1,005 kN	

## ANTAEUS Model 200 Heavy Duty Caisson Clamps for Vibros with more than 4400 inch pounds

	A	B	C	D	E	F	G	H	J	K
200		1,350 lbs 610 kg		8 in 203 mm		2.25 in 57 mm			113 short tons 1,005 kN	
200	34 in 864 mm	25 in 635 mm	11 in 279 mm	14 in 356 mm	23.38 in 594 mm	10.8 in 274 mm	1.5 in 38 mm	10.88 in 276 mm	7 in 178 mm	7.25 in 184 mm



Model	Weight	Piston Diameter						Piston Stroke				Cylinder Force				
200S	2200 lbs 1000 kg	8 in 203 mm						2.25 in 57 mm				113 short tons 1005 kN				
		A	B	C	D	E	F	G	H	J	K	L	M	N	P	R
	50 in 1270 mm	41 in 1041 mm	12 in 305 mm	15 in 381 mm	30.89 in 785 mm	18.2 in 462 mm	1.59 in 40 mm	10.31 in 262 mm	8.13 in 207 mm	7 in 178 mm	5.75 in 146 mm	8.25 in 210 mm	/	4 in 102 mm	22.19 in 564 mm	



Bolt Pattern