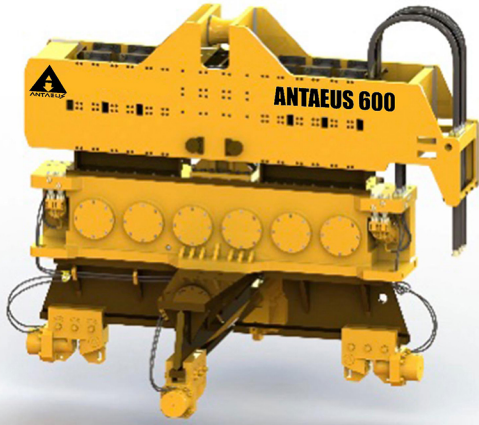




Antaeus Model 600 "Zeus"

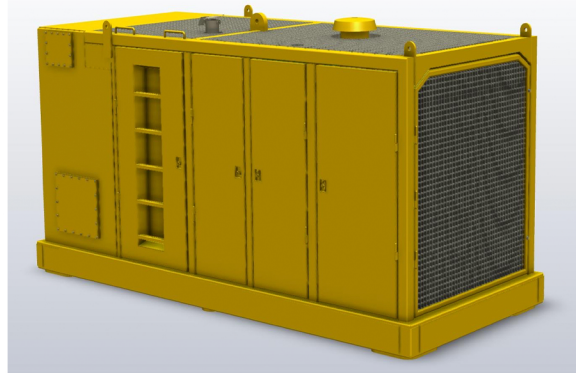
"Designed By Pilebucks"



Antaeus "Zeus" Power Unit

SPECIFICATIONS	DATA
Eccentric Moment	21,000 in-lbs (242 kg-m)
Drive Force	554 tons (5432 kN)
Frequency Maximum (VPM)	0 - 1,350 vpm
Max Line Pull	351 tons (3,123 kN)
Vibro Weight without clamps	48,500 lbs (21,999 kg)
Vibro with Quad Clamp: 17-foot	75,700 lbs (34336 kg)
Vibro with Quad Clamp: 13-foot	67,400 lbs (30572 kg)
Vibro with Quad Clamp: 11-foot	61,600 lbs (27941 kg)
Vibro with single beam and two clamps or sheet clamp: consult factory	
Throat Width	40-in (101.6 cm)
Length	180.00 in (457 cm)
Height w/o Clamp	104.50 in (265 cm)

SPECIFICATIONS	DATA
Engine Type	<i>Hybrid CAT C-18 + Electric Motor Boost</i>
Horse Power	1,200 HP (883 kW)
Drive Pressure	0 - 4,500 psi (310 bar)
Drive Flow	294 gpm (1,113 lpm)
Clamp Pressure	4,800 psi (69,618 bar)
Clamp Flow	10 gpm (3 lpm)
Engine Speed	1800 rpm
Weight	23,000 lbs (10,433 kg)
Length	152 in (385 cm)
Width	82 in (208 cm)
Height	94 in (239 cm)
Hydraulic Reservoir	800 gallon (3028 L)
Fuel Capacity	150 gallon (568 L)
Spare Hydraulic Tank	80 gallons (302 L)



- *Forward and Reverse Hydraulic Flow*
- *Built-in Spare Hydraulic Tank - 80 gallon capacity*
- *Sealed top to prevent dirt from dumping on engine*
- *Full drip pan bottom to prevent oil spills*
- *Tachometer on pendant to control speed*



ANTAEUS FOUNDATION EQUIPMENT, LLC
250 SOUTH WEBSTER
SEATTLE, WA. 98108 (206) 495-7030 John White

www.antaeususa.com