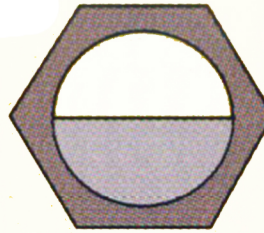
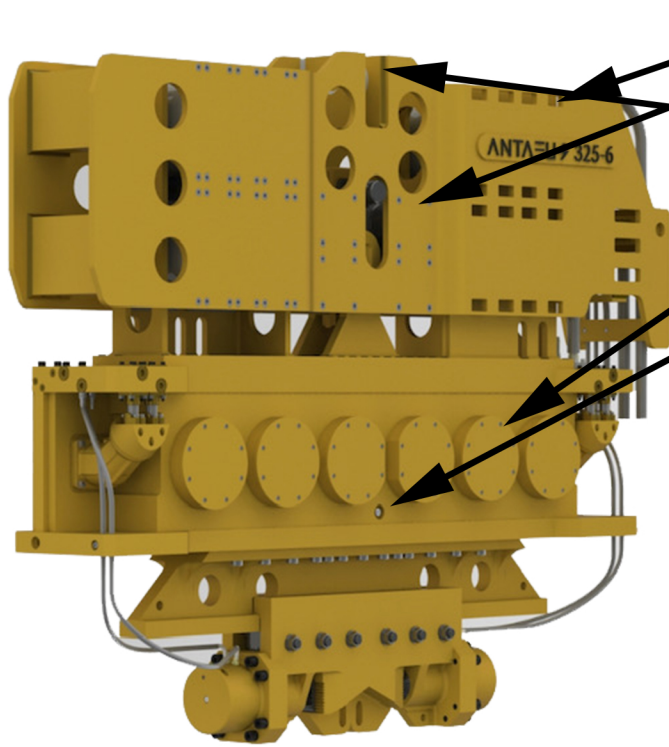


# ANTAEUS Daily Vibro & Power Unit Check List

## Vibratory Pile Driver/Extractor and Clamp

- Check Large Elastomers (Rubber Springs) For Cracks
- Inspect Small Elastomers (Rubber Springs) For Cracks
- Checked all fasteners to make sure nothing is loose
- Inspect Lifting Wire- Remove Any Damaged Wire Rope
- Inspected Hoses for wear and any damages or leaks
- Checked Bearing Covers for dents or damage
- Checked all welds for cracks
- Checked Oil Level Site Glass- Not Cracked Oil Not Milky



Shaffer 268 Gear Oil  
Half Way Up Sight Glass

- Checked Jaws for Wear
- Checked Beam mounting bolts for tightness
- Checked wedges in caisson clamps for tightness

## Power Unit

- Checked Engine Coolant
- Checked Engine Oil Level
- Checked Pump Drive Oil Level (Mounted On Back of Engine)
- Checked Fan Belts
- Checked To Make Sure Power Unit is Level
- Checked Fuel Level
- Checked Hydraulic Oil Level
- Checked Batteries- Level OK
- Checked 50-foot Control Pendant Switches & Cable

