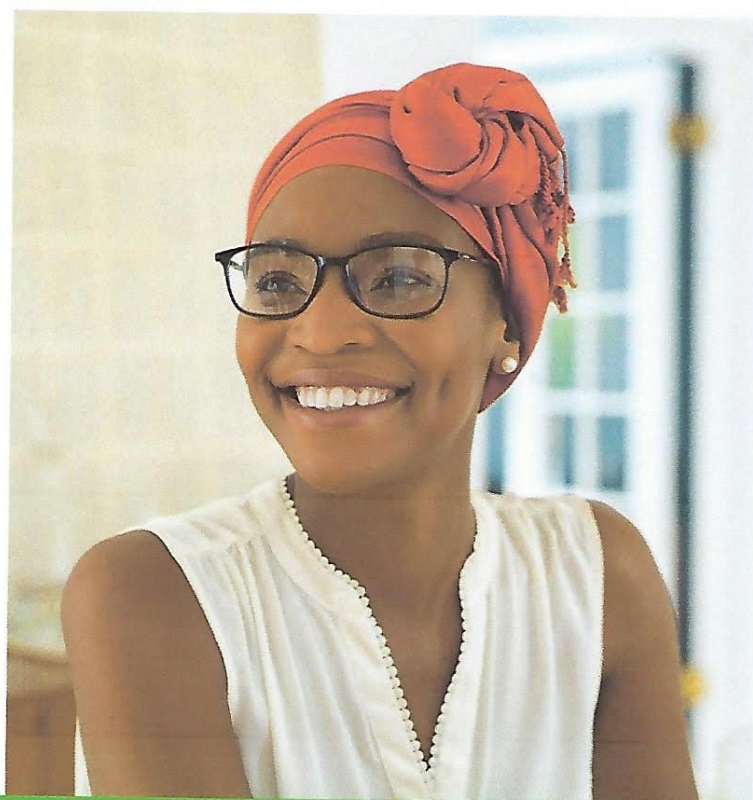


# Set a Goal: Enroll

## We're here to help you get a health plan.

Need health insurance? Our trained experts can help you get covered with a 2023 health plan, just in time for the new year. Last year, people who enrolled saved an average of \$300 a month on their premiums. Let us help you find the most savings.



**Open enrollment: November 1, 2022 - January 15, 2023**

### For each person applying, you'll need:

- » Photo ID
- » Social Security number
- » Immigration/citizenship documents (for some residents)
- » Pay stubs or W-2 wage and tax statement (if employed)
- » Policy numbers for any other health insurance)

#### CALL CENTERS

##### PGC Call Center - (301) 927-4500

Monday - Friday, 8:30 am - 4pm  
Evening Hours: Wednesday, 5pm - 7pm

##### PGC Call Center - (240) 719-2167

Monday - Friday, 9am - 4pm  
Evening Hours: Thursday, 4pm - 7pm

#### PGC ENROLLMENT LOCATIONS

##### Penn Station: (In Person Only)

5746 Silver Hill Rd, District Heights, MD 20747  
Monday - Wednesday, 9am - 4pm  
Thursday, 9am - 7pm, (Late hours start 11/17)  
Friday, 9am - 4pm (Online Only)  
Saturday, 10am - 2pm (In-Person only start 11/19)

##### La Union: (In Person Only)

1401 East University Boulevard/Suite G1, Hyattsville, MD 20783  
Tuesday, Wednesday and Thursday, 9am - 4pm

##### CASA

8151 15th Avenue, Hyattsville MD 20783  
Monday - Friday, 9:00am - 5:00pm (By Appointment Only)  
Monday - Friday, 8:00am - 7:00pm, Information Line  
Tele: (301) 270-8432, Spanish; (240) 270-1318, French

#### CASA (cont.d)

##### \*Saturday In-Person Walk-In Dates:

Nov 12 & 19, 10am - 3pm  
Dec 10 & 17, 10am - 3pm  
January 14, 9am - 5pm  
\*Closed December 23, 2022

#### DSS ENROLLMENT LOCATIONS

##### Landover

425 Brightseat Road, Landover, MD 20785  
Monday - Friday, 8:30am - 3:30pm

##### Hyattsville

6505 Belcrest Road, Hyattsville, MD 20782  
Monday-Friday, 8:30am - 3:30pm

##### Temple Hills

4235 28th Avenue, Temple Hills, MD 20748  
Monday, 8:30am - 3:30pm  
Wednesday, 8:30am-3:30pm (start Nov. 16th)

All sites will be closed November 24th and 25th (Thanksgiving break); December 24th, 26th, 31st, and January 2, 2023 for holidays.

#### HOW TO ENROLL:

**Online:** MarylandHealthConnection.gov

**Call:** 1-855-642-8572 (Toll Free); Relay users dial 711