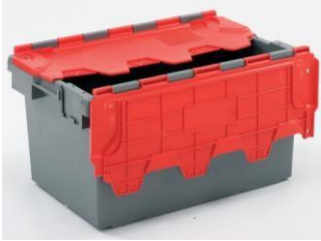




CUSTOMER COST INFORMATION & PRODUCT SHEET (2021)

Standard Utility Crate



Dimensions: - 630 x 410 x 320mm or 0.079cubic metres (80 litres) of storage space

Discontinued as of Jan 2021

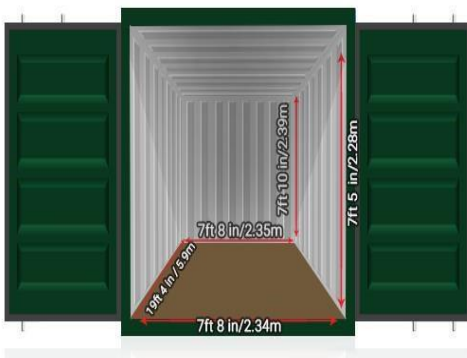
Standard Klimped Warehouse Timber Container with single Door



Dimensions: - 2,184 x 1,574 (40sq ft)x 2,424mm or 8.33cubic metres (250 cub feet) of storage space

Discontinued as of Jan 2021

Standard Insulated Contractor's Container



Dimensions: - 2,440 x 6,080 (160sq ft) x 2,440mm or 33.13 cubic metres (1,170 cubic feet) of storage space

**UNINSULATED CONTAINER -
Discontinued as of Jan 2021**

NSULATED CONTAINER

£35.00/week plus VAT with a £140.00 deposit repaid on return

£42.00/week including VAT

Monthly rental is therefore £168.00/month/container

For Availability, Please Call - 07501555030