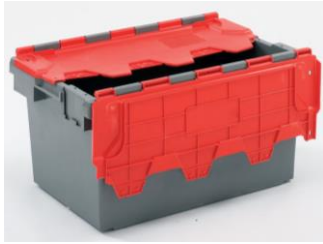




## CUSTOMER COST INFORMATION & PRODUCT SHEET

### Standard Utility Crate



**Dimensions:-** 630 x 410 x 320mm or 0.079cubic metres (80 litres) of storage space

**Charge Rate per Crate:-**

**£0.50/week plus VAT with a £5.00 deposit repaid on return**  
**£0.60/week Including VAT**  
**Monthly rental is therefore £2.40/month/crate**

### Standard Klimped Warehouse Timber Container with single Door

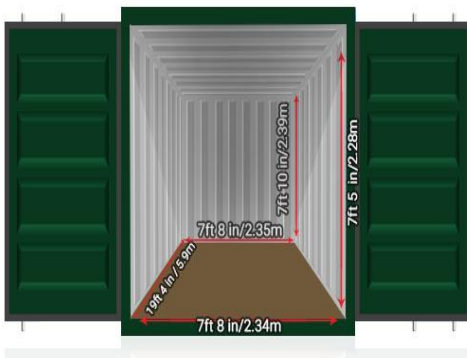


**Dimensions:-** 2,184 x 1,574 (40sq ft)x 2,424mm or 8.33cubic metres (250 cub feet) of storage space

**Charge Rate per Container:-**

**£20.00/week plus VAT with a £80.00 deposit repaid on return**  
**£24.00/week including VAT**  
**Monthly rental is therefore ££96.00/month/crate**

### Standard Insulated Contractor's Container



**Dimensions:-** 2,440 x 6,080 (160sq ft) x2,440mm or 33.13 cubic metres (1,170 cubic feet) of storage space

**Charge Rate per Container:-**

**UNINSULATED CONTAINER**

**£30.00/week plus VAT with a £120.00 deposit repaid on return**  
**£36.00/week including VAT**  
**Monthly rental is therefore £144.00/month/container**

**INSULATED CONTAINER**

**£35.00/week plus VAT with a £140.00 deposit repaid on return**  
**£42.00/week including VAT**  
**Monthly rental is therefore £168.00/month/container**