

# Interested in Keeping Your Top Talent in Town?

We graduate students *on time, fully funded, and ready for employment.*



## Hometown Scholars

Powered by Q3

**Program  
Success 5x  
National  
Average**

### Winning Results

#### Students

- Proven recipe for success
- Reduced stress
- Enhanced development of skills
- Peer mentoring for life skills
- Job placement
- Transitional housing
- Social program
- Emotional resilience

#### Community

- Retention of talent
- Highly educated workforce
- Economic growth over time

#### Industry

- Technically adept workers
- Instilled with management skills
- Professionally developed skills

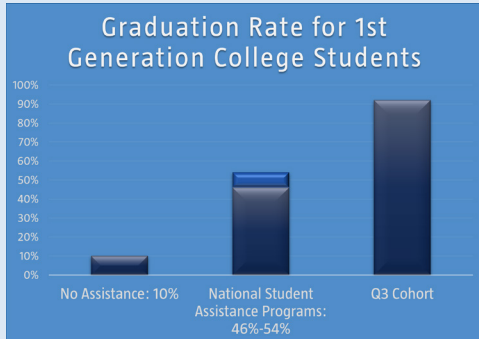
#### Healthcare

- Well-rounded, secure and responsible stream of workers
- Interns to help at peak times

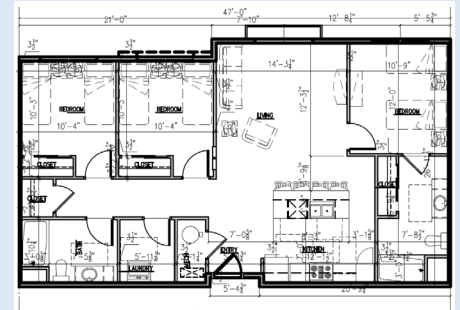
# Program Success Model

The national average for first-generation college students succeeding in a degree program and graduating on time is only 10%. When support services like networking, course selection assistance, FAFSA Renewal, Job Search, and Study Skills, are offered, the graduation percentage increases by at least 5x the national average.

**Hometown Scholars creates a winning solution for the students, community, local industry, and economy, by combining these support services into a robust, on-site mentoring program that has driven graduation rates as high as 92%.**



*By combining five separate national student assistance programs into our mentoring program, we are experiencing a 92% success rate.*



## How it Works

Whether the student is studying to be a robotics technician or a registered nurse the system works the same. Providing intellectual assistance (IQ), emotional support (EQ), and financial intelligence (FQ) is the formula to student success. The services are provided in two ways, through an online dashboard and upperclassmen or graduate live-in mentors.

### Online Dashboard Services

- Support software tracks student progress
- Connections to other valuable campus resources
- In program peer - to - peer support
- Task management assistance

### Mentor - Student Services

- Time management
- Professional communication
- Personal Financial Management
- Emotional self-regulation
- Health and wellness
- Community college advisory boards

**Finally, our team** combines the Hometown Scholars Program with a transitional housing component. This transitional period supports the beginning of the student's career as it continues to give Life-Skills training and Career Development courses. This model strengthens the local economy by assisting the recent graduates to remain in the community while they transition from student to working professional.

## The Complete Hometown Scholar Solution

Not linking the housing with any particular college program allows the housing to serve anyone from a 2-year welding program to a doctoral degree candidate. The housing can be situated anywhere with buses that drive by various educational facilities on a particular schedule.

The building is easily divided so that like-minded students can live in groups together. Being surrounded by students in their own program fosters collaboration on projects, study groups, and a sense of community.



# Challenges for First-Generation College Students

- Poor study conditions
- Distractions from previous life experiences
- Learning challenges
- Time management
- Isolation hurdles
- Cultural bias
- Working full time



## Engage the Team

The best time to engage our team is early in the process when you first identify community need. We assist with:

- Locating and Evaluating sites for new construction
- Designing an affordable facility that aligns with your campus
- Re-purpose of an existing building
- Construction of a new building
- Affordable Class A student apartments

You can expect our team to assess your facility needs, advise quickly, and stand behind our assessment. We will provide a complete program from site location, comfortable and affordable housing, collaborative spaces, the setup of a mentorship program, and the deliberate creation of a support system to promote student success.



*Current Hometown Scholar communities have double the number of applicants than existing capacity.*

## Delivering the Student Solution

Our team successfully provides fast track solutions because we understand how to effectively coordinate and integrate design and construction processes. Our goal is to quickly assist in the feasibility testing of the project performance, uncovering cost savings, and mitigating design and construction risk early in the process to ultimately complete the project safely, on time, and within budget. Our tested professionals approach the project with the objective to overcome any challenges and deliver a high-quality facility ready for the start of the college term.

### Why Work with Our Team:

- Predictable single source to reduce Client risk
- Ready coast-to-coast for immediate projects
- Competitive national purchasing power
- Multiple offices and staff locations
- Local, regional, and national subcontractor base for maximum, competitive pricing
- Architects and designers who specialize in state-of-the-art student housing

# Turnkey Workforce Housing Solution

Producing *College & Technical Graduates* that *Stay* in the Community

## The Bottom Line

This program is possible through partnerships with:

- GIS for site selection & incentives
- Cole Design Group for civil engineering
- Orcutt Winslow for architecture
- BC Construction Group for overall project feasibility, project management & construction
- Q<sup>3</sup> Student Partners for operations and mentoring

Estimated at **\$550 per month**, our rent aligns with the amount provided by Financial Aid for housing (\$3,300 semiannually), allowing the student to complete their education fully funded through the Pell Grant.

## Mentor Involvement

Upper-classmen mentors live on-site with student tenants to provide social, academic, and professional support. They manage internal communication tools to ensure personal & academic progress.

Life Skills Training includes:

- Time Management
- Professional Communication
- Personal Financial Management
- Emotional Self-Regulation
- Health & Wellness

Mentors guide professional development by utilizing planning software to assist in selection of students academic major. Students are also partnered with relevant summer internships that correlate with the student's chosen degree.



**This Program is in High Demand**  
*Current Hometown Scholar communities have double the number of applicants than existing capacity.*

## Contact Our Team:

**GIS - Greg Burkart**

Board Advisor

810-599-7867

greg@hometownscholars.com

**BCCG - Peter Robinson**

Vice President of Specialty Living

810-206-8455

peter@hometownscholars.com