

*Parkman  
Poly*  
OUTDOOR FURNITURE



*Outdoor Furniture*

Custom Built To Last

## OUR POLY FURNITURE IS A "GREEN" PRODUCT MADE FROM RECYCLED MILK JUGS.

- Termite Resistant
- Will Not Crack or Rot
- U.V. Stabilized to Prevent Fading
- Withstands Sand & Salt Water
- Assembled With Stainless Steel Hardware
- Will Not Promote Bacterial Growth
- Weather Resistant
- All Swings Come With Stainless Steel Chains

### TO CARE FOR YOUR FURNITURE

Polywood furniture should be cleaned frequently with soap & water in coastal or harsh conditions. This furniture requires no storage even in snowy climates. Do not place HOT items on poly furniture! With proper care you will get a lifetime of enjoyment out of your fine furniture.

### ORDERING INFORMATION - EXAMPLE SHOWN

Quality	Item#	Description	Color Name	Color #
2	200	Single Glider	Aruba Blue 31 on	White 16

To ensure that your order is correctly processed, please provide the following information: If your furniture is to be in two-tones always provide the top color first.

**Example:** A chair ordered in weatherwood on ivory will have weatherwood back, seat, and the base will be ivory.

### TERMS

A 50% deposit is required on all orders with the balance due when you receive your order.

### SHIPPING INFORMATION

We ship via XPO Logistics & Sunbelt Furniture Express. Customer is responsible for all freight charges.

### WARRANTY

5 yr. Commercial · 20 yr. Residential

Note: Customer is responsible for all freight on returns!

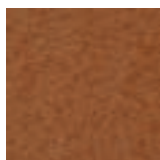
# POLY COLOR OPTIONS

## STANDARD COLOR OPTIONS

These softer shades feature earth tones that pair well with any design.



BLACK



CEDAR



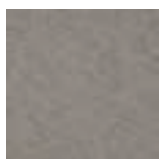
TUDOR BROWN



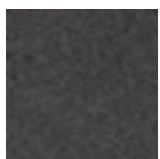
CHERRYWOOD



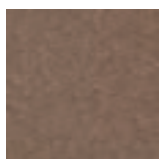
WHITE



LIGHT GRAY



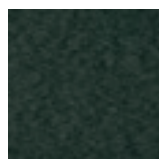
DARK GRAY



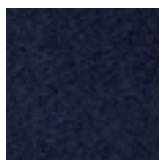
WEATHERED WOOD



IVORY



TURF GREEN



PATRIOT BLUE



BLUE



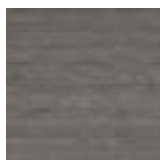
CARDINAL RED

## PREMIUM WOODGRAIN COLOR OPTIONS

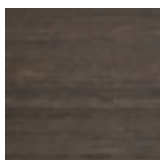
Rich, wood-grain textures highlight this group of offerings.



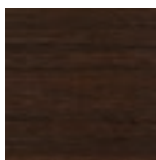
BIRCHWOOD



DRIFTWOOD GRAY



COSTAL GRAY



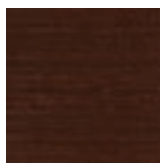
BRAZILIAN



ANTIQUÉ MAHOGANY



NATURAL TEAK



WALNUT

## STANDARD COLOR COMBINATIONS



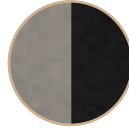
Weathered Wood & Black



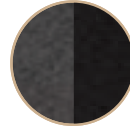
Tudor Brown & Black



Cherry Wood & Black



Light Grey & Black



Dark Grey & Black



Cedar & Black



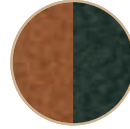
Cedar & Tudor Brown



Weathered Wood & Tudor Brown



Cedar & Cherry Wood



Cedar & Turf Green



Weathered Wood & Cherry Wood



Dark Grey & White



Patriot Blue & White



Weathered Wood & White

## PREMIUM WOODGRAIN COLOR COMBINATIONS



Antique Mahogany & Black



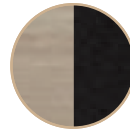
Brazilian & Black



Driftwood & Black



Coastal Grey & Black



Birchwood & Black



Birchwood & Tudor Brown



Antique Mahogany & White



Brazilian & White



Driftwood & White



Coastal Grey & White

Premium colors are 10% more if done in any solid or two-tone premium colors. They are only 5% more if done in two-tone with one premium color & one standard color

Wood Grain is a premium color & is 10% more if done in solid wood grain 20% more.



#405  
 5' Double Glider W/Center Console  
 69"Wx34"Dx39.5"H  
 Shown in Aruba Blue on Light Gray

## SWINGS



#200  
 Single Glider  
 31.5"Wx31.5"Dx39.5"H  
 Shown in Yellow on White



#209  
 Gliding Ottoman  
 22"Wx22.5"Dx15.5"H  
 Shown in Yellow on White



#400  
 Double Glider  
 56 1/4"Wx21.5"Dx39.5"H  
 Shown in Yellow on White



#230  
 Fan Back Swivel Chair  
 Shown in Patriot Blue on White



#800  
 Rollback Single Glider  
 33.5"Wx37"Dx39.5"H  
 Shown in Weatherwood  
 on Tudor Brown





#202

Fan Back Rocker

31.5"Wx27.5"Dx40.5"H

Shown in Light Gray on Dark Gray  
With #207 Side Table with Shelf

## ROCKERS



#203

Porch Rocker

26"Wx33.5"Dx48"H

Shown in Solid White



#217

Kids Rocker

16"Wx26"Dx24"H

Shown in Pink on Light Gray



#205  
 Fan Back Chair  
 31.5"Wx27.5"Dx40.5"H  
 Shown in Patriot Blue on White

## CHAIRS



#206  
 Folding Adirondack Chair  
 30 1/4"Wx35.5"Dx39"H  
 Shown in Aruba Blue on Ivory  
 With pullout footrest  
 (Optional Additional Charges Apply.)



#201  
 Adirondack Chair  
 31"Wx34.5"Dx39"H  
 Shown in Light Gray on Dark Gray



#204  
 Deluxe Adirondack  
 31 1/4"Wx36 1/4"Dx36"H  
 Shown in Cardinal Red on White



#216  
 Kids Chair  
 17 1/4"Wx24"Dx23.5"H  
 Shown in Red-White-Blue





#485  
Backyard Bench  
68"Wx29"Dx39.5"H  
Shown in Aruba Blue on Ivory

# BENCHES



#450  
Chaise Lounge  
27.5"Wx65"Dx38 1/4"H  
Shown in Aruba Blue on White



#495  
Fan Back Bench  
56 1/4"Wx30"Dx40.5"H  
Shown in Lt. Gray on Black



#475  
Garden Bench  
51.5"Wx20.5"Dx37.5"H  
Shown in Cherrywood on Ivory





#308

A Frame Vinyl

Shown in White

Available in Almond or White

#300

5' Fan Back Swing W/Center Console

64 3/4"Wx28.5"Dx30.5"H

Shown in Antique Mahogany on Black

#210

Swing Springs

Zinc Set of 2

## SWINGS

All swings come with 3/16" Stainless Steel Chain



#304

4' Fan Back Swing

52.5"Wx28"Dx31"H

Shown in Patriot Blue on Dark Gray

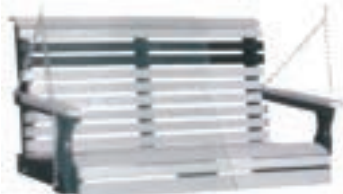


#305

5' Fan Back Swing

61"Wx28"Dx31"H

Shown in Cedar on Black



#306

4' Roll Back Swing

52"Wx23"Dx24.5"H

Shown in Light Gray on Black



#307

5' Roll Back Swing

61"Wx23"Dx24.5"H

Shown in Cherrywood on Black



#214  
Round Side Table  
21"Wx21"Dx22.5"H  
Shown in Cherrywood  
on White

## ACCESSORIES



#207  
Side Table With Shelf  
16"Wx22 1/4"Dx21.5"H  
Shown in Aruba Blue  
on White



#208  
Square Side Table  
22"Wx22"Dx22"H  
Shown in Weathered Wood  
on Tudor Brown



#212  
Coffee Table  
35"Wx22"Dx19 1/4"H  
Shown in Cherrywood  
on Dk. Gray



#211  
Adirondack Footrest  
22"Wx26.5"Dx15"H



#215  
Cup Holder



#219  
Rectangle Side Table  
16.5"Wx22"Dx21.5"H  
Shown in Aruba Blue  
on White



#223  
Two Tier End Table  
Shown in Solid Tropical  
Lime Green



#220  
Folding Side Table  
16.5"Wx22"Dx21.5"H  
Shown in Lt. Gray on  
Black



#506  
Rail Hugger  
56"Wx22"Dx40"H  
Shown in Aruba Blue  
on White



#218  
Pub Slide In Table  
28"Wx22"Dx2"H  
Shown in Solid Blue  
These connect two  
pub Captains chairs



#213  
Conversation Table  
33"Wx33"Dx19 1/2"H





**#500**  
**Small Patio Table**  
 44"Wx56"Dx30.5"H  
 Shown in Aruba Blue on White  
 Also available  
**#501**  
**Patio Table**  
 44"Wx72"Dx30.5"H

**#602**  
**Fan Back Dining Chair**  
 25.5"Wx25.5"Dx39"H  
 Shown in Aruba Blue on White

# DINING HEIGHT TABLE & CHAIRS



**#601**  
**Patio Captions Chair**  
 25.5"Wx19.5"Dx44.5"H  
 Shown in Green on Tudor Brown  
 Also available in Pub Height #502



**#504**  
**Round Dining Height Table**  
 42"Wx42"Dx30.5"H  
 Shown in Antique Mahogany on Black.

**#455**  
**Round Bench**  
 42"Wx11"Dx18"H



**#600**  
**Patio Side Chair**  
 20"Wx19.5"Dx44 1/4"H  
 Shown in Green on Tudor Brown

**#500**  
**Small Patio Table**  
 56"Wx44"Dx30.5"H  
 Shown in Lime Green on Tudor Brown  
 Also available in Pub Height #502



**#503**  
 Pub Table - Counter Height  
 33"Wx33"Dx36"H  
 Shown in Cherry Wood on Black

**#610**  
 Swivel Pub Captain Counter Height  
 29.5"Wx29.5"Dx46.5"H Seat Height 24.5" Arm Height 32.5"  
 Shown in Cherry Wood on Black

# BAR HEIGHT TABLE & CHAIRS



**#504**  
 42" Round Pub Table  
 42"Wx42"Dx40"H  
 Shown in Antique Mahogany  
 on Black.



**#604**  
 Pub Side Chair  
 20"Wx24"Dx48 3/4"H  
 Shown in Weatherwood



**#603**  
 Pub Captains Chair  
 25.5"Wx26"Dx50"H  
 Shown in Blue on White



**#700**  
 Three Bar Set Bar & 2  
 Stools  
 55"Wx23.5"Dx45"H  
 Shown in Cedar on Black

**#701**  
 Extra Bar Stools  
 15"Wx15"Dx30"H  
 Also Available in 24"H



Bar Stool with Footrest



# ABOUT OUR COMPANY

## Components That Make Our Poly Furniture Last

A swivel, spinning, or revolving chair is a chair with a single central leg that allows the seat to rotate 360 degrees to the left or right. The first swivel chair was invented by Thomas Jefferson, and is purported to be the chair on which he drafted the United States Declaration of Independence in 1776.

Glides

Swivels

Springs



#405  
Double Glider W/Center Console



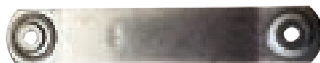
#610  
Swivel Pub Captains Chair



Stainless Glider Arm



Swing Springs



Stainless Swivel Sealed Bearings

### Warranty

Parkman Poly, LLC warrants to the original purchaser that its polyethylene outdoor furniture products will be free of original defects in workmanship and materials for a period of twenty (20) years residential use or five (5) years of commercial use unless otherwise noted in warranty. The warranty is effective starting on the date of purchase. At its option Parkman Poly, LLC will repair or replace this product without charge for materials and labor, providing our inspection indicates that an original defect exists. Should Parkman Poly, LLC choose to replace the product, and the product is no longer available at the time warranty service is required a substitution of similar performance and equal or greater value will be made. Polyethylene is a synthetic product and may scratch, will fade slightly when exposed to sunlight or stain after prolonged contact with other substances. Some expansion and contraction is to be expected during changes in humidity and temperatures. The foregoing shall not be considered defects in materials or workmanship and are not covered under this warranty. Stainless steel may rust in certain extreme conditions (such as coastal areas) if not maintained. This warranty does not cover rusting fasteners or structural failure due to rust fasteners, damage caused by unauthorized service or repairs, alteration of this product abuse or misuse, normal wear and tear on materials, or any attempt to use the product in a manner or for a purpose together that for which it is customarily intended. This warranty does not cover scratching or chipping of polyethylene, however, this warranty shall not limit any warranties made by the manufacturer for such items which may extend to you. The sole remedy provided in this warranty is repair or replacement of this product. Any cost of shipping & handling shall be paid by you.

# TANGENT™

## SUSTAINABLE LUMBER

A combination of strength, durability and aesthetics outdoors, Tangent, as a premium plastic lumber manufacturer, delivers unrivaled performance in alternative materials that are made to live on. Tangent wood will not rot, splinter, corrode, or decay like more traditional materials. They're easy to clean, never need to be painted, stained, or sealed, and are impervious to moisture and insects.





