

COREtec[®]
the Original

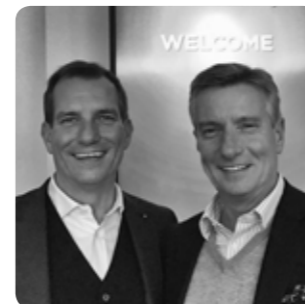
The **NATURALS** BY COREtec
COLLECTION



INCLUDING
HERRINGBONE PATTERN



From one true original to another, it's a family affair!



The real values in life are those created and found within families; authenticity, trust and the opportunity given to be creative and express yourself. These same values drive our company and they define our corporate culture. We saw an opportunity to create a better floor. We chased a dream and created a whole new category along the way. As the innovators of COREtec®, the Original, 100% waterproof floor, we did just that. Today, our consumers are enjoying our solutions of stylish, strong floors that sustain real family lives full of entertaining, kids and pets.

"Click, lock, enjoy. It is as simple as that!"

It all began as an entrepreneurial business in 2001, within our founder's heart and spare bedroom as our "headquarters". With the invention of COREtec®, the original, patented, 100% waterproof floor in 2013, we grew rapidly to become the leading brand of these unique and highly innovative products. We launched our European division in 2016 and that same year were acquired and embraced into the family of Shaw Floors, an industry leader and subsidiary of Berkshire Hathaway, led by the world-renowned investor, Warren Buffett.

We've come a long way from where we started to where we are now. But those family values guide us still. Led by management and embraced by every employee, dealer, and partner, we are recognized as the problem-solvers, innovators and design enthusiasts. Today we offer an incredible range of resilient, durable floors that can be purchased, installed and lived upon in one single day. Click, lock, enjoy. It is as simple as that!

The most difficult task will be choosing from our wide variety of life-like decors. But don't worry, you are sure to find one to match your style because we have a floor for every personality.

Welcome to our family, We promise to remain authentic to the core.

What's in your core?

Your COREtec® floor
always fits your style &
stands up to real life,
it's engineered for simplicity.



Always fits your style

We have a passion for providing a wide selection of authentic natural looks, so you can express what makes you, you. Persistent in product innovation – including micro-beveled edges, enhanced painted bevels & Embossed in Register technology – we create the most appealing designs & textures available.



Stands up to real life

Our floors are 100% waterproof, kid-proof & pet-proof. Try them in your kitchen or bathroom: they won't warp or buckle, even if submerged in water.

Our 100% waterproof core, resilient vinyl and protective wear layer will keep your floor looking good for the life of your home. So naturally, all COREtec® floors come with a limited lifetime residential warranty.



Is engineered for simplicity

COREtec® is easy to install, to care for and to live with. Its secure angle tap system doesn't require any glue or nails and can be installed over existing floors without additional underlayment.

Forget about sanding, polishing, sealing or refinishing: our floors are maintenance-free.

There's a million reasons to choose COREtec®, but here's our top 6.

Our floors:

- ✓ Will not expand or contract
- ✓ Reduce noise
- ✓ Have superior scratch & stain resistance
- ✓ Do not need to acclimate
- ✓ Are suitable for underfloor heating & cooling
- ✓ Install on any surface



Cork, the natural choice

All our floors have a unique attached cork underlayment. Why? It's warmer, quieter and easily installs over existing hard surfaces, perfectly concealing imperfections in subfloors. And: it's one of the most sustainable materials out there. Cork is harvested from the cork tree and can be re-harvested every decade without damaging the tree. A natural solution that brings only benefits to your home or business:



added sound insulation



a comfortable and warmer floor



a natural protection against mold & mildew



no need for separate underlayment



absorbs subfloor imperfections



SOUND CORE[®]

The original 100% waterproof floor, with extra noise reducing technology.

**0.55 mm
HIGH
PERFORMANCE
WEAR LAYERS**

IN STYLE
indistinguishable
from the real thing

COMFORT
warm & quiet
underfoot

ACOUSTIC
excellent
sound reduction

SUSTAINABLE
attached cork
underlayment

*The***NATURALS**
BY CORETEC

**14
PATTERNS**
182 x 1220 mm

**8
AVAILABLE
IN HERRINGBONE**
110 x 660 mm

**8 mm
TOTAL
THICKNESS**



100% waterproof



Will not expand or contract



Pet proof



Reduces noise



Easy to install



Superior scratch resistance



Installation on any surface



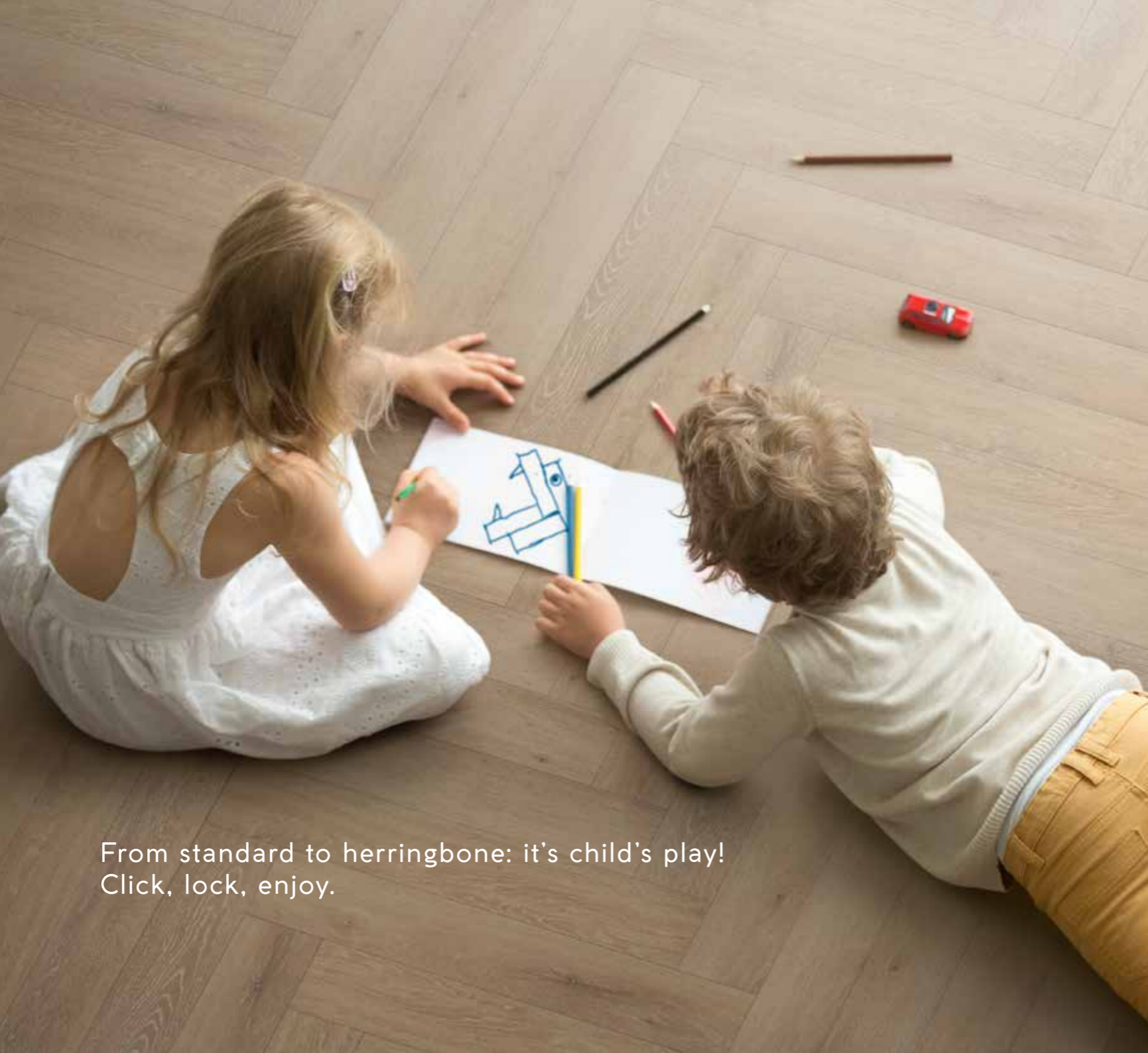
No acclimatization necessary



Ideal for underfloor
heating & cooling



Electrostatic performance



From standard to herringbone: it's child's play!
Click, lock, enjoy.

**COLORS IN
STANDARD PATTERN**

TIMBER 50-LVPE-853	4 V-GROOVE	28
LEAF 50-LVPE-858	4 V-GROOVE	30
SWAMP 50-LVPE-859	4 V-GROOVE	32
HARVEST 50-LVP-801		34
SAND 50-LVP-802		36
GRAIN 50-LVP-803		38



**COLORS IN 2 PATTERNS
STANDARD OR HERRINGBONE**

ACORN 50-LVPE-854	V-GROOVE	4 V-GROOVE 50-LVPEH-854	12
HAZE 50-LVPE-855	4 V-GROOVE	4 V-GROOVE 50-LVPEH-855	14
BARK 50-LVPE-856	4 V-GROOVE	4 V-GROOVE 50-LVPEH-856	16
SPELT 50-LVPE-857	4 V-GROOVE	4 V-GROOVE 50-LVPEH-857	18
LUMBER 50-LVP-804		4 V-GROOVE 50-LVPEH-804	20
DESERT 50-LVP-805		4 V-GROOVE 50-LVPEH-805	22
FOREST 50-LVP-806		4 V-GROOVE 50-LVPEH-806	24
MEADOW 50-LVP-807		4 V-GROOVE 50-LVPEH-807	26



ALSO AVAILABLE IN HERRINGBONE

4 V-GROOVE



50-LVPEH-854



50-LVPE-854

4 V-GROOVE

Standard: 50-LVPE-854
Herringbone: 50-LVPEH-854

ACORN



HAZE

Standard: 50-LVPE-855
Herringbone: 50-LVPEH-855



4 V-GROOVE

50-LVPE-855

ALSO AVAILABLE IN HERRINGBONE

4 V-GROOVE



50-LVPEH-855

The NATURALS
COLLECTION

ALSO AVAILABLE IN **HERRINGBONE**

4 V-GROOVE



50-LVPEH-856



50-LVPE-856

4 V-GROOVE

Standard: 50-LVPE-856
Herringbone: 50-LVPEH-856

BARK



The NATURAL COLLECTION

SPELT

Standard: 50-LVPE-857
Herringbone: 50-LVPEH-857



4 V-GROOVE

50-LVPE-857

ALSO AVAILABLE IN HERRINGBONE

4 V-GROOVE



50-LVPEH-857

The NATURALS
COLLECTION

ALSO AVAILABLE IN HERRINGBONE

4 V-GROOVE



50-LVPEH-804



50-LVP-804

LUMBER

Standard: 50-LVP-804
Herringbone: 50-LVPEH-804



The **NATURALS**
COLLECTION

DESERT

Standard: 50-LVP-805
Herringbone: 50-LVPEH-805



ALSO AVAILABLE IN HERRINGBONE

4 V-GROOVE



The **NATURALS** COLLECTION
by CORELUX

ALSO AVAILABLE IN **HERRINGBONE**

4 V-GROOVE



50-LVPEH-806



50-LVP-806

FOREST

Standard: 50-LVP-806
Herringbone: 50-LVPEH-806



The **NATURALS**
COLLECTION

MEADOW

Standard: 50-LVP-807
Herringbone: 50-LVPEH-807



ALSO AVAILABLE IN HERRINGBONE

4 V-GROOVE





50-LVPE-853

4 V-GROOVE

TIMBER

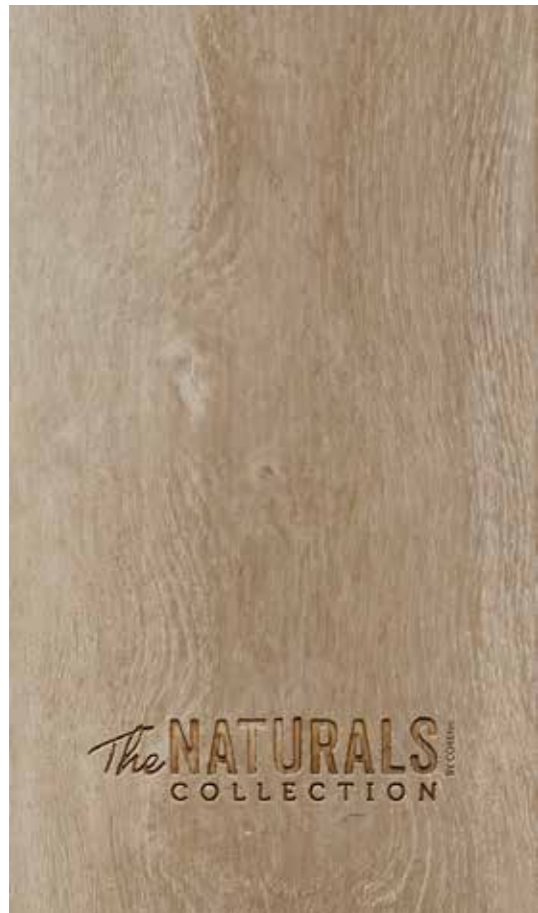
50-LVPE-853



The **NATURALS** COLLECTION
IN COREtec

LEAF

50-LVPE-858



4 V-GROOVE

50-LVPE-858



50-LVPE-859

4 V-GROOVE

50-LVPE-859

SWAMP



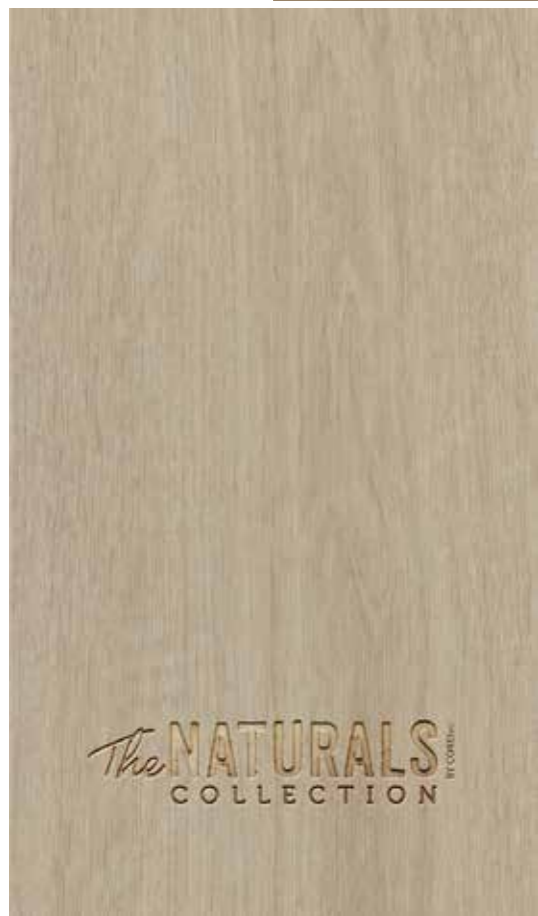
The **NATURALS**
COLLECTION

HARVEST

50-LVP-801



50-LVP-801



The **NATURALS** COLLECTION



50-LVP-802

50-LVP-802

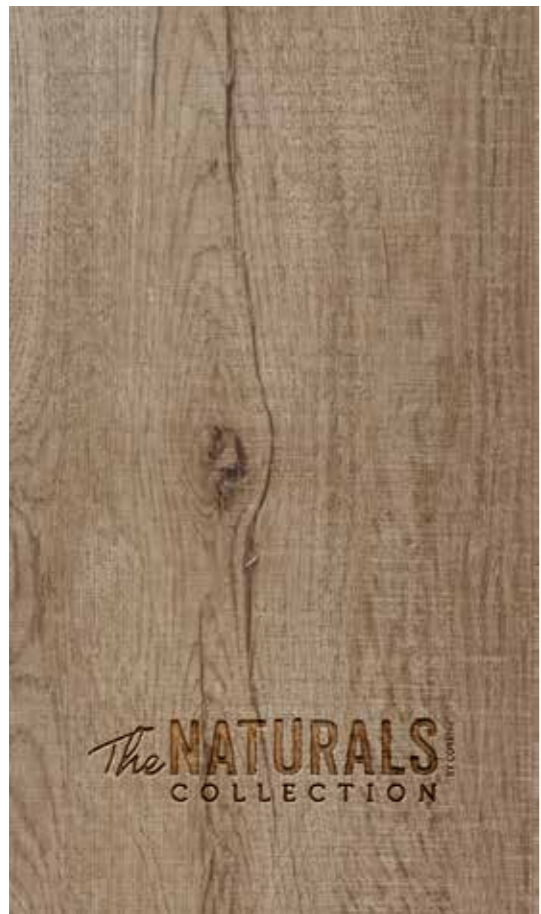
SAND



The **NATURALS** COLLECTION
BY COREtec

GRAIN

50-LVP-803

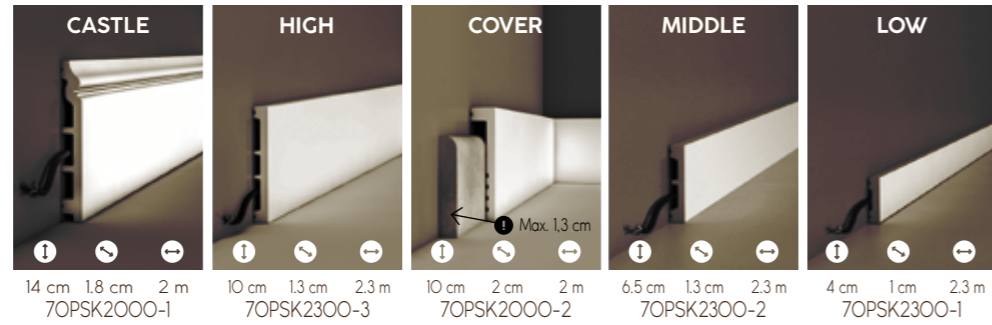


50-LVP-803

ACCESSORIES

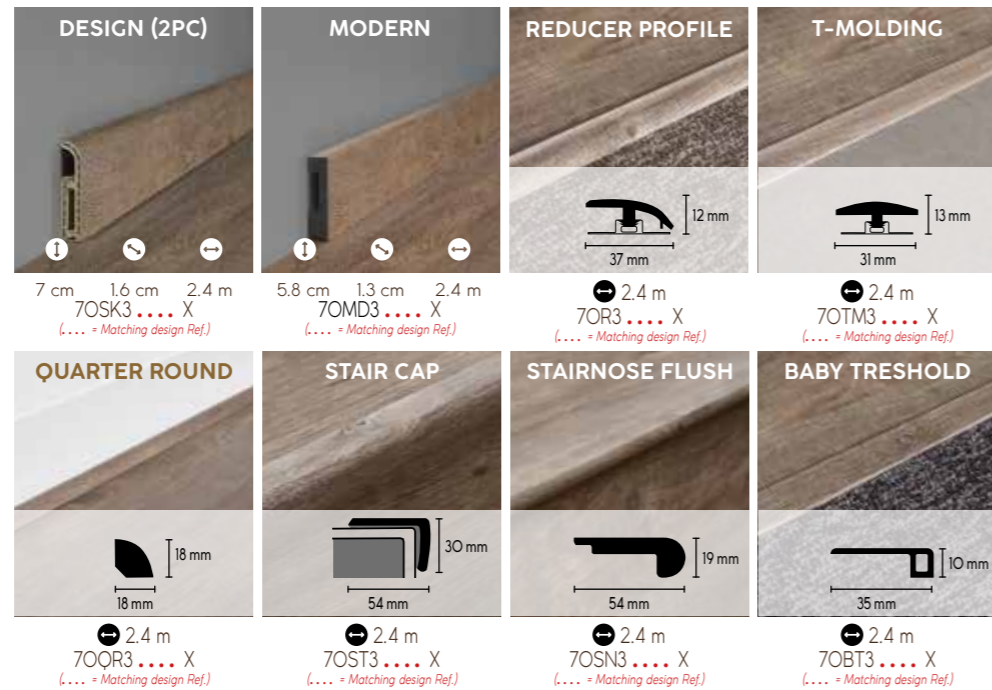
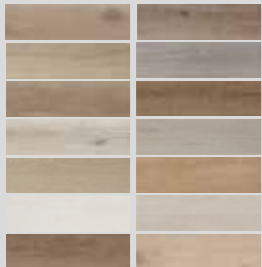
Paintable skirtings

Our paintable skirtings are 100% waterproof & shock resistant.



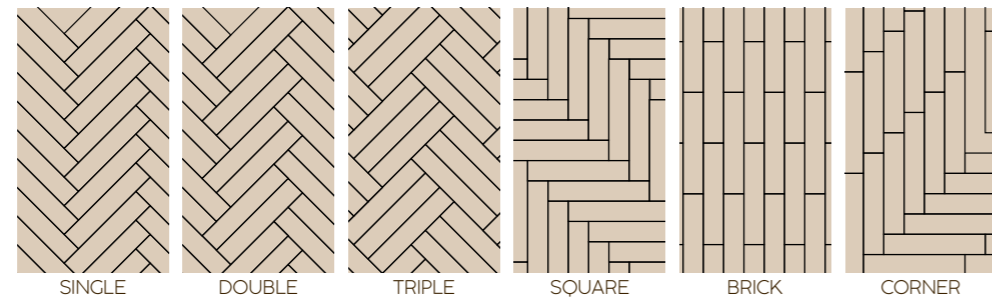
Matching design accessories

Our design accessories match the design of your floor & are also 100% waterproof & shock resistant.



Herringbone variations

Mix & match your own style...

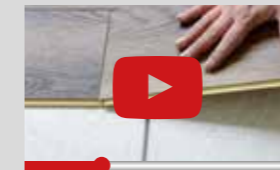
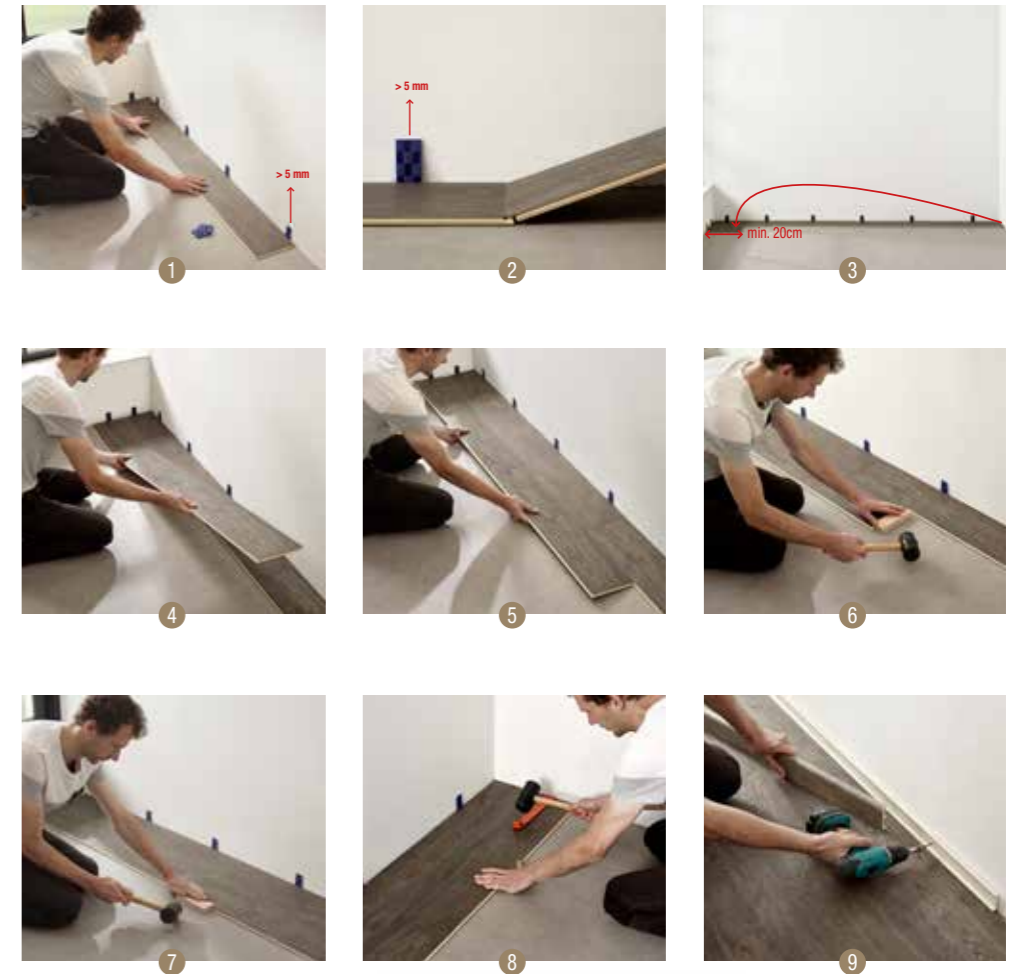


INSTALLATION

Easy to install

COREtec® floors have the easiest install in the market.

Follow the steps or watch our installation video on our website. Surf to www.coretecfloors.com



MAINTENANCE

The COREtec® Clean, quick & green kit:

- Daily cleaner
- Deep cleaner
- Stain remover



TECHNICAL SPECIFICATIONS



8.00 mm
(EN ISO 24346)



0.55 mm
(EN ISO 24340)



STANDARD
182 x 1220 mm
HERRINGBONE
110 x 660 mm



STANDARD
12 pcs
2.66 m²
22.04 kg
HERRINGBONE
32 pcs
2.32 m²
20 kg

LEVEL OF USE

Clasificación de uso / Classe d'uso
Classe de utilização

33-42 (EN ISO 10874)

INFLAMMABILITY

Resistencia al fuego
Classe di resistenza al fuoco
Classificação de Fogo

B_{fl}-S1 (EN 13501)

SCRATCH RESISTANCE

Resistencia a la abrasión
Resistenza ai graffi
Resistencia a riscos

Class T (EN 660-2)

SQUARENESS AND STRAIGHTNESS

Cuadratura y rectitud / Dilatazione
Retidão de parada

< 0.15 mm (EN 24342)

CURLING WHEN EXPOSED TO HEAT

Encorvamiento después de exposición al calor
Incurvamento massim
Incurvation depois de exposição o calor

< 0.02 mm (EN 23999)

DIMENSIONAL STABILITY

Estabilidad dimensional
Stabilità dimensionale
Estabilidade dimensional

< 0.02 mm (EN 23999)

ELECTROSTATIC PERFORMANCE

Rendimiento electroestático
Performance elettrostatica
Acumulação de cargas eletrostáticas

< 2 kV (EN 1815)

SLIP RESISTANCE

Coefficiente de fricción
Coefficiente dinamico di attrito
Anti-derrapagem

DS (EN 13893)

SLIP RESTRAINT

Restricción al resbalamiento
Coefficiente di scivolosità
Resistência o escorrimto

R10 (DIN 51130)

FORMALDEHYDE GROUP

Grupo formaldeído / Classe Formaldeide
Classificação do formaldeído

E1 (EN 717-1)

ACOUSTIC INSULATION

Aislamiento acústico / Isolamento acustico
Eficiência acústica

$\Delta L_w = 20$ dB

$\Delta L_{LIN} = 10$ dB (ISO 10140 & ISO 717-2)

DRUM NOISE

Propagación acústica / Rumore da wcalpestio
Barulho refletiu o andar

45% Reduction / class SL50 (EPLF)

CASTOR CHAIR RESISTANCE

Resistencia a sillas con ruedas
Prova con sedia a ruote
Resistência as cadeiras de rodas

Pass (EN425)

LIGHT FASTNESS

Solidez del color a luz artificial
Resistenza alla luce
Resistência a luz

8 (ISO 105-B02)

HEAT INSULATION

Aislamiento térmico / Isolamento al calore
Isolamento térmico

0.1009 (m² K/W) (EN 12667 ISO 8302)

UNDERFLOOR HEATING

Calefacción por suelo radiante
Riscaldamento a pavimento
Compatível com aquecimento do pavimento

Suitable / Adecuado / Adatto / Adequado

RESISTANCE TO CHEMICALS

Resistencia a los productos químicos
Resistenza ai prodotti chimici
Resistência em substâncias químicas

Very good / Muy bueno
Molto buono / Muito bom

(EN 423)

RESIDUAL INDENTATION CERTIFIED

Huella residual
Indentazione residua certificata
Perfuração remanescente certificada

0.04 mm (EN ISO 24343-1:2012)



LIFETIME
WARRANTY
RESIDENTIAL



10 YEAR
WARRANTY
COMMERCIAL



US PATENT
APPROVED
156,233



GREEN-CODE
ECI PLUS
best emissions



EN 14041
CE
DOP-ELV
USFLOORS Int flc
Textelstraat 20
8790 WAREGEM
Belgium
resilient floor covering



GREENGUARD
PRODUCT CERTIFIED FOR
LOW CHEMICAL EMISSIONS
UL.COM/CGG
UL 2818
GOLD



AgBB
2011



EMISSION CLASS FOR
RESIDENTIAL
M1



PHTHALATE FREE



LEAD FREE



SOUND
core
BY COREtec

Warranty (Years) The warranty covers manufacturing defects and premature wear in the event of normal use.

Garantía (años) La garantía cubre los defectos de fabricación y el desgaste prematuro en caso de uso normal.

Garanzia (anni) La garanzia copre i difetti di produzione e usura prematura in caso di corretto e normale utilizzo.

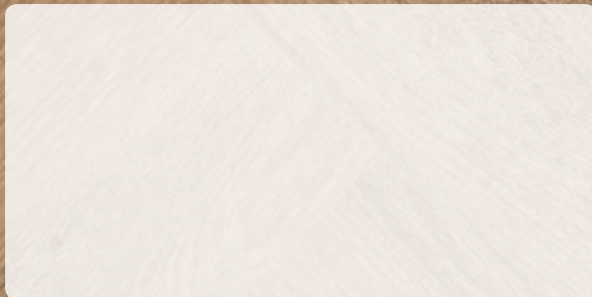
Garantia (Anos) A garantia cobre defeitos industriais e uso prematuro usado normal.

The **NATURALS** BY COREtec
COLLECTION

BY



A PROUD DIVISION OF



info@usfloors.be • www.coretecfloors.eu