

Art Basel Miami

2022

MOME 206

Professor Shin

By: Erin O'Donnell

Concept Statement

In this project I will show how Art Basel can be an immersive experience by introducing a character dashing through a painting and installations to reach Art Basel. I will introduce scale by making the gorilla small. I will implement line weight by varying the width of the paint strokes and paint splatters that the gorilla will run on. This is meant to show how someone's eyes travel across in a painting or installation. The effect of this is coming together at this event to have a conversation.

MOME206 |
Winter Quarter 2022

02

ERIN O'DONNELL



Research: Art Basel

Art Basel is an art fair that supports artists, art curators, and galleries. Art Basel is located in Basel, Switzerland; Hong Kong, China; and Miami, Florida. Art Basel promotes artistic expression by exhibiting artworks. The artworks are placed as the artist wants it to be seen. These events help cultivate the art community and builds a network for creators to rely on. Art Basel Miami 2022 will be held in the Miami Beach Convention Center (MBCC) on December 1-3, 2022.

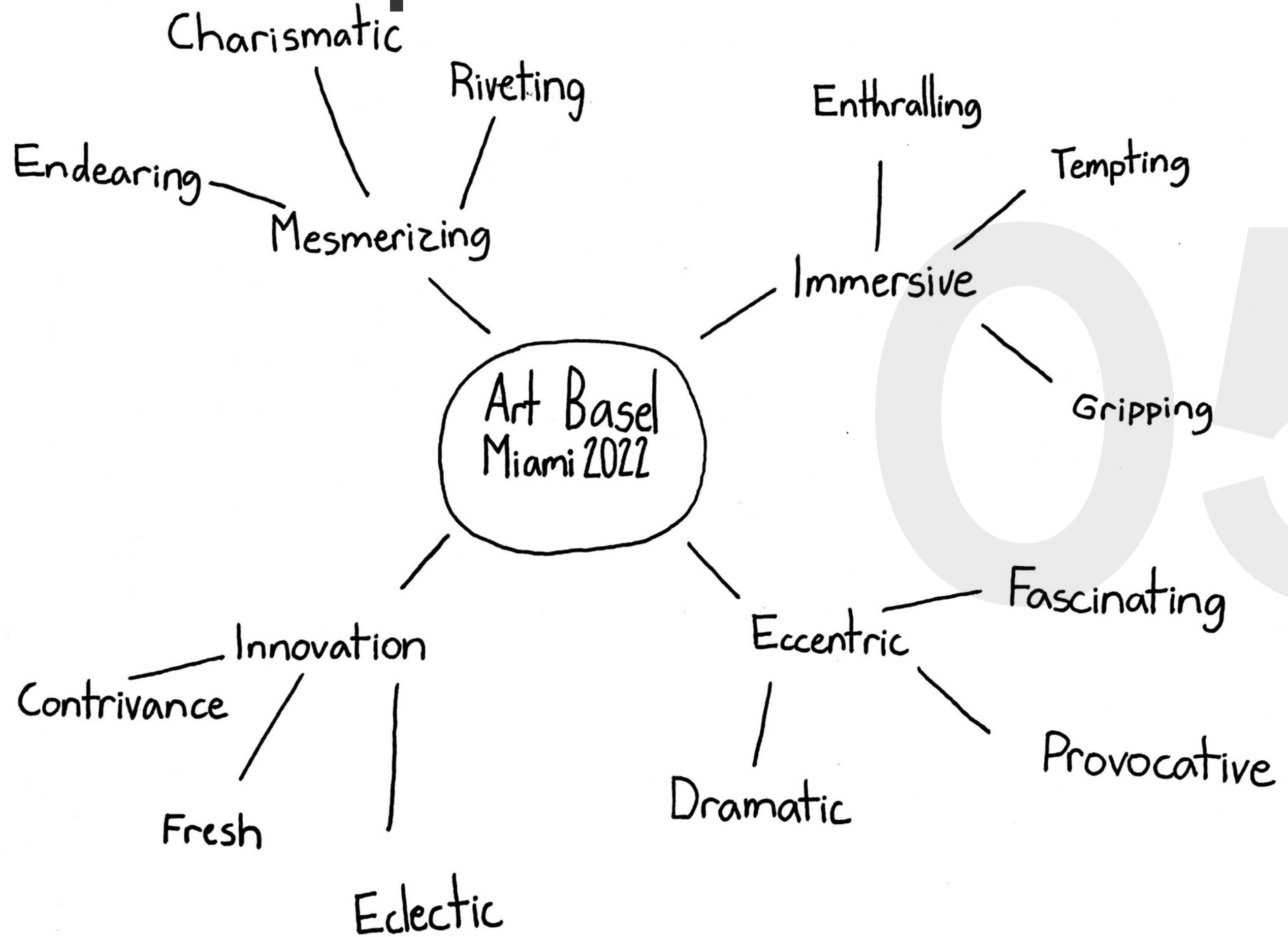


Written Description: Brainstorming

I want to build my animation in 2.5 D with Adobe After Effects. 2.5 D is placing objects that only have two dimensions, domain and range, in three dimensional space. A problem I may face is how to make a transition in three dimensional space. To solve this I will position the camera to match the speed of the animation. Also, I may possibly segment particular pieces to match the speed of the animation.



Mindmap



Word List

- Immersive
- Innovation
- Enthralling
- Tempting
- Endearing
- Gripping
- Mesmerizing
- Contrivance
- Fresh
- Eclectic
- Fascinating
- Charismatic
- Provocative
- Riveting
- Dramatic
- Eccentric



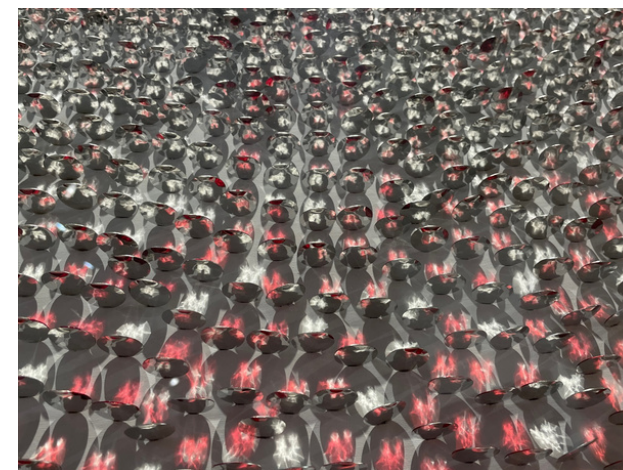
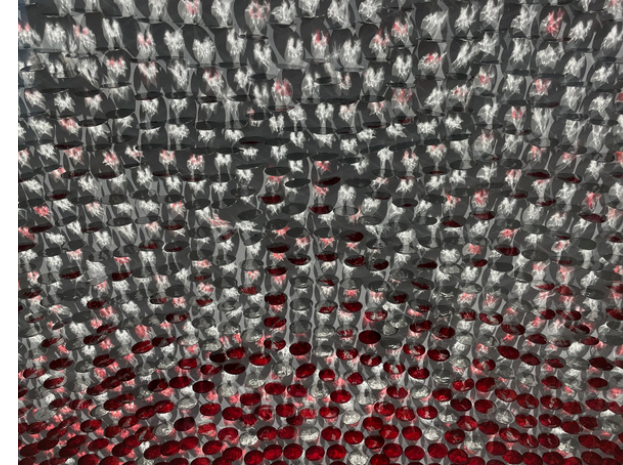
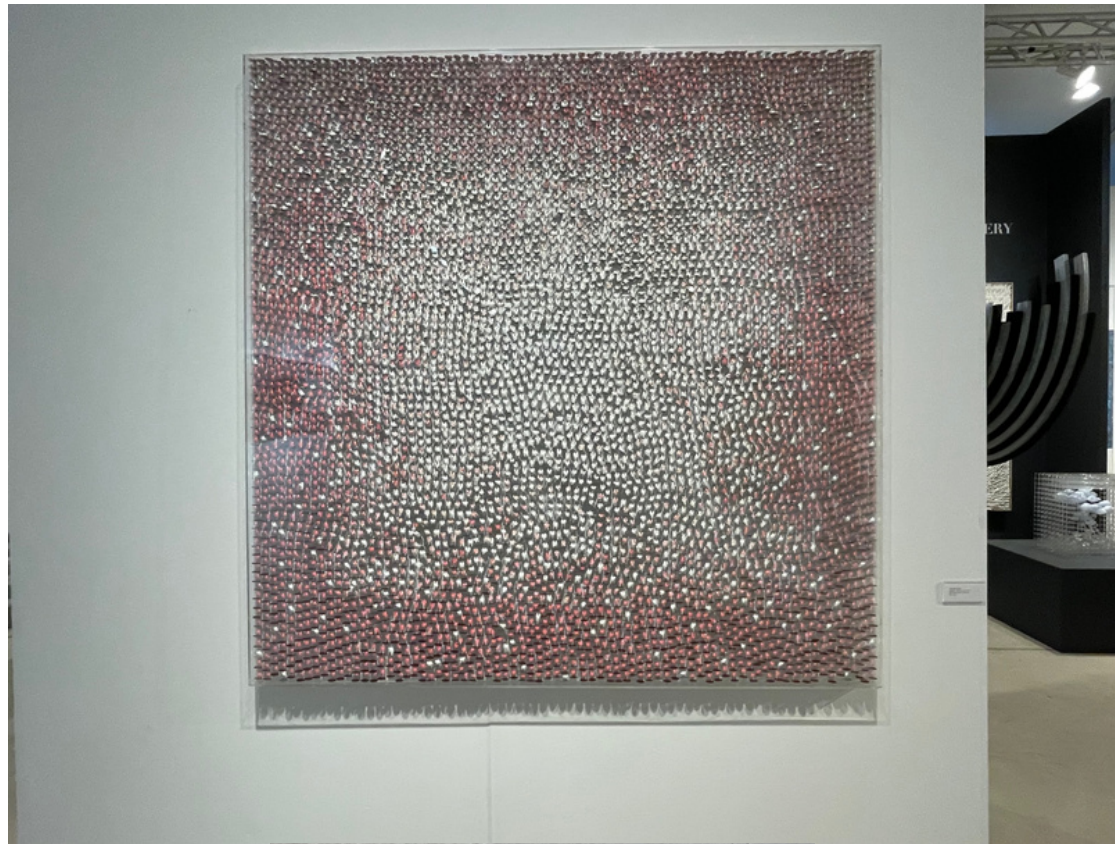
Word List: Dos and Don'ts

- Immersive/ One-Dimensional
- Innovation/ Imitation
- Enthralling/ Dismal
- Tempting/ Undesirable
- Endearing/ Releasing
- Gripping/ Trite
- Mesmerizing/ Unappealing
- Contrivance/ Disorganization
- Fresh/ Dreary
- Eclectic/ Narrow
- Fascinating/ Tedious
- Charismatic/ Repellant
- Provocative/ Unstimulating
- Riveting/ Banal
- Dramatic/ Dull
- Eccentric/ Typical

07



Mood Board



Yong R. Kwon
Square - Red in Light, 2017
Stainless steel on canvas
59 x 59 in

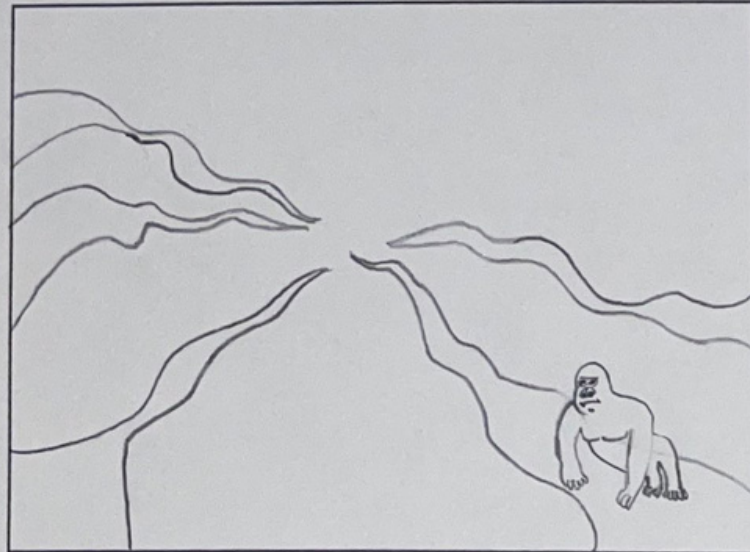


Color



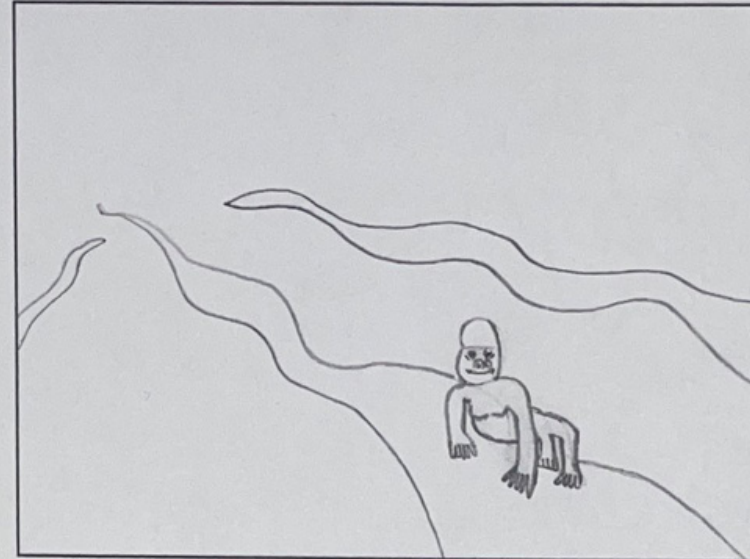
Storyboard

Panel Number 01



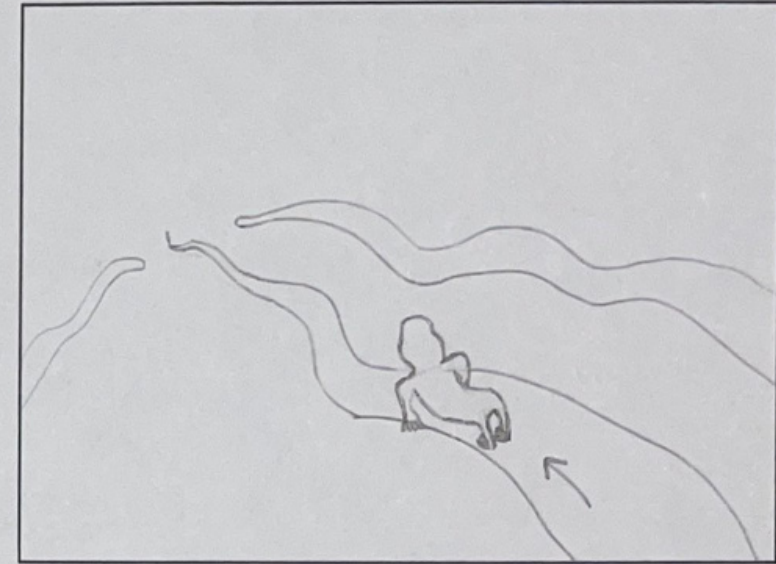
Keyword:

Panel Number 02



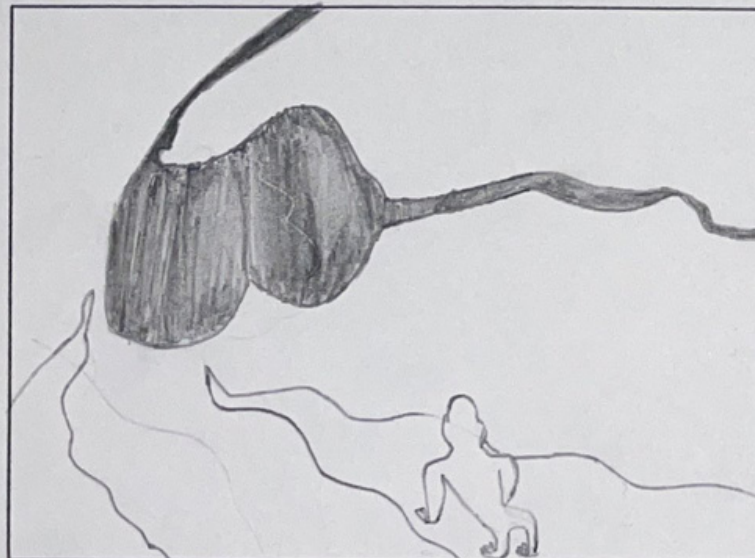
Keyword:

Panel Number 03



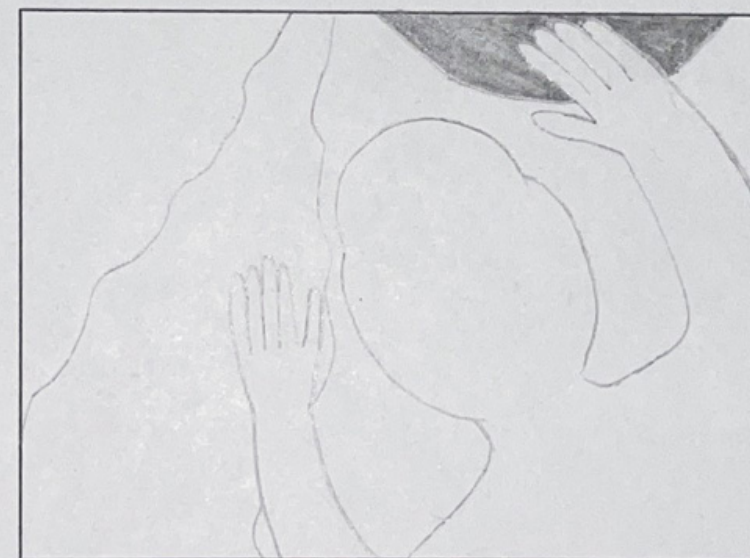
Keyword:

Panel Number 04



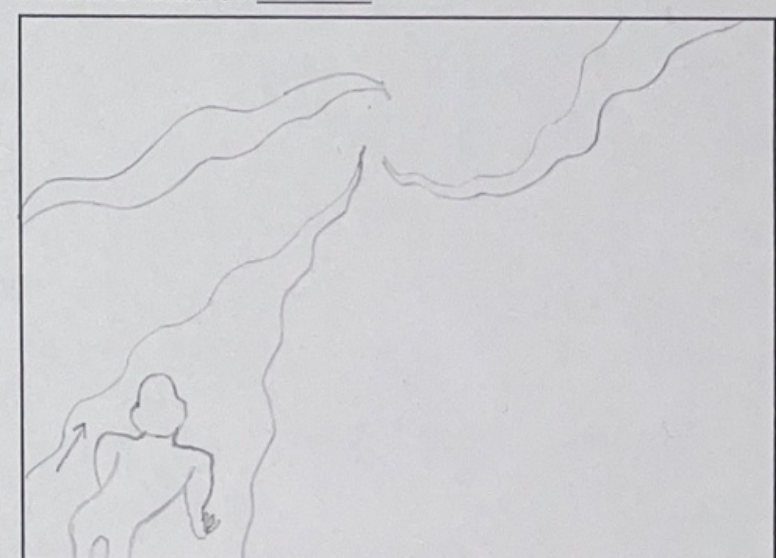
Keyword:

Panel Number 05



Keyword:

Panel Number 06

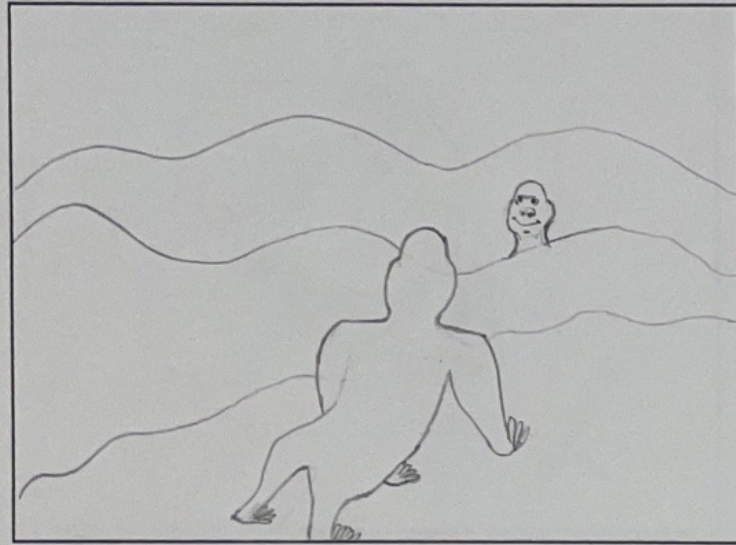


Keyword:

Scanned with CamScanner

Storyboard (Continued)

Panel Number 07



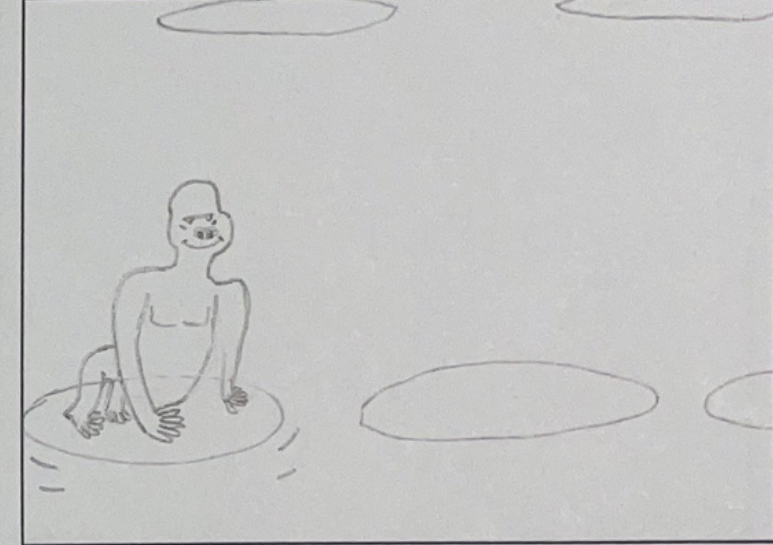
Keyword:

Panel Number 08



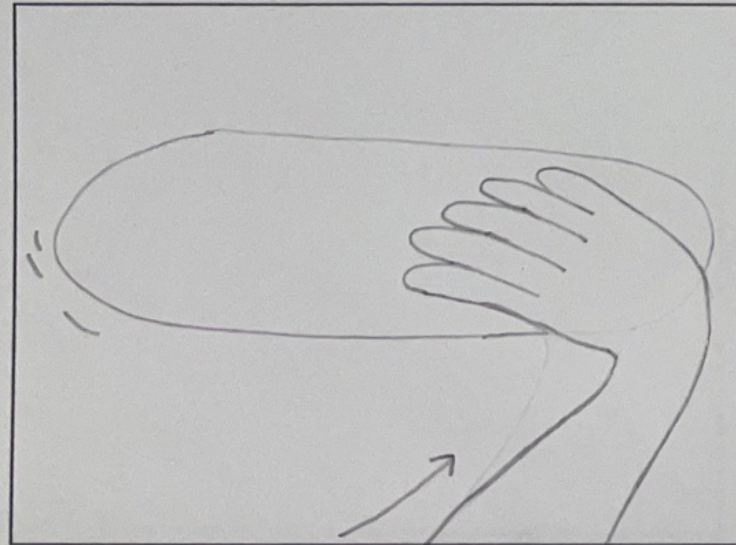
Keyword:

Panel Number 09



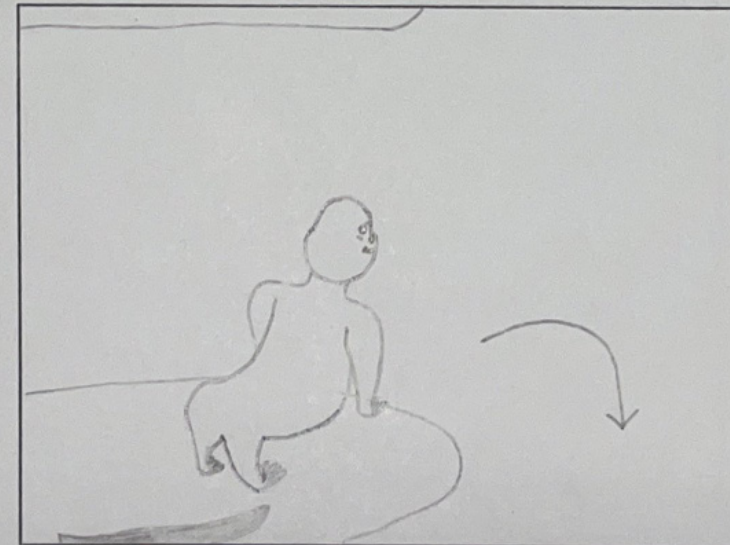
Keyword:

Panel Number 10



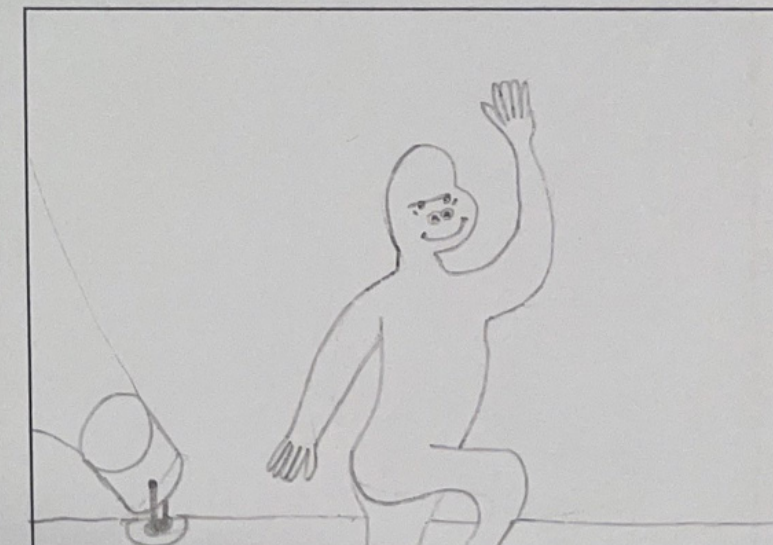
Keyword:

Panel Number 11



Keyword:

Panel Number 12

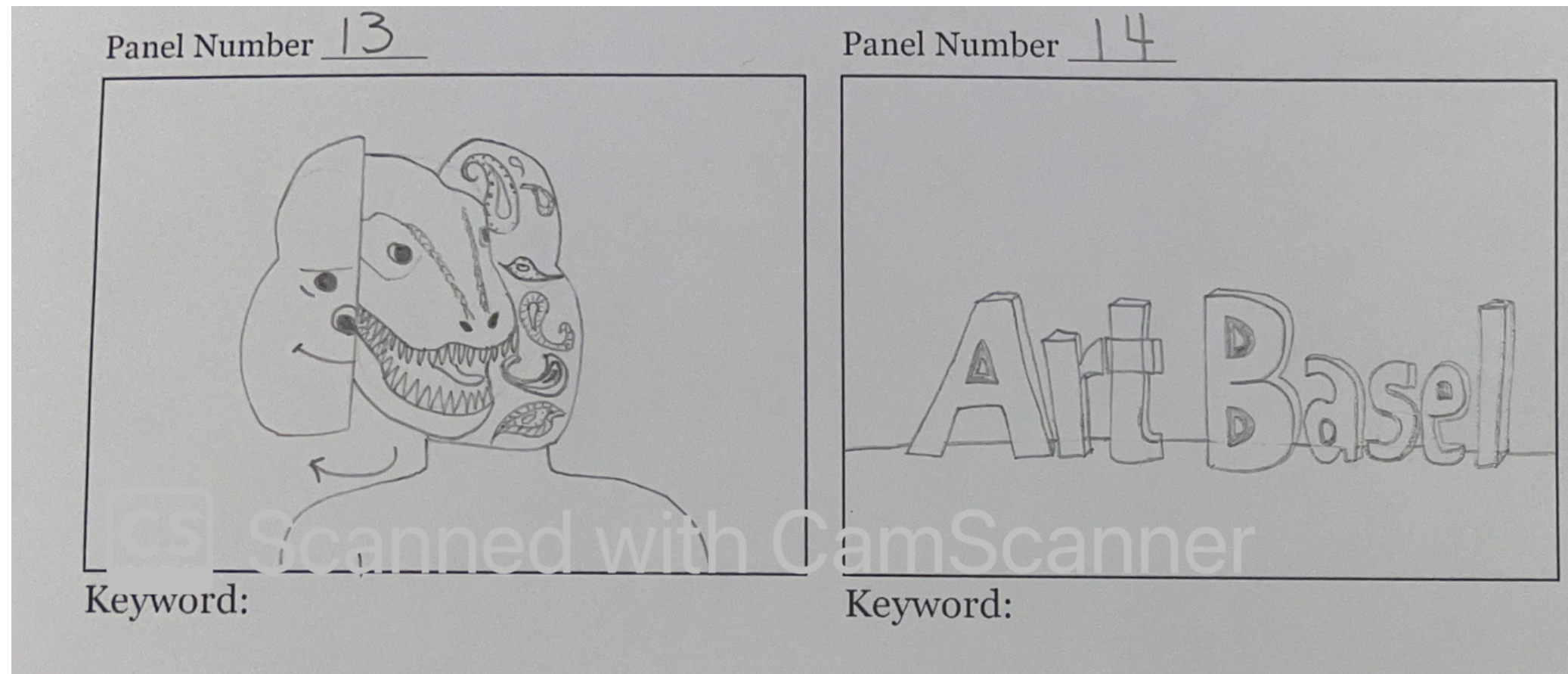


Keyword:

CS Scanned with CamScanner

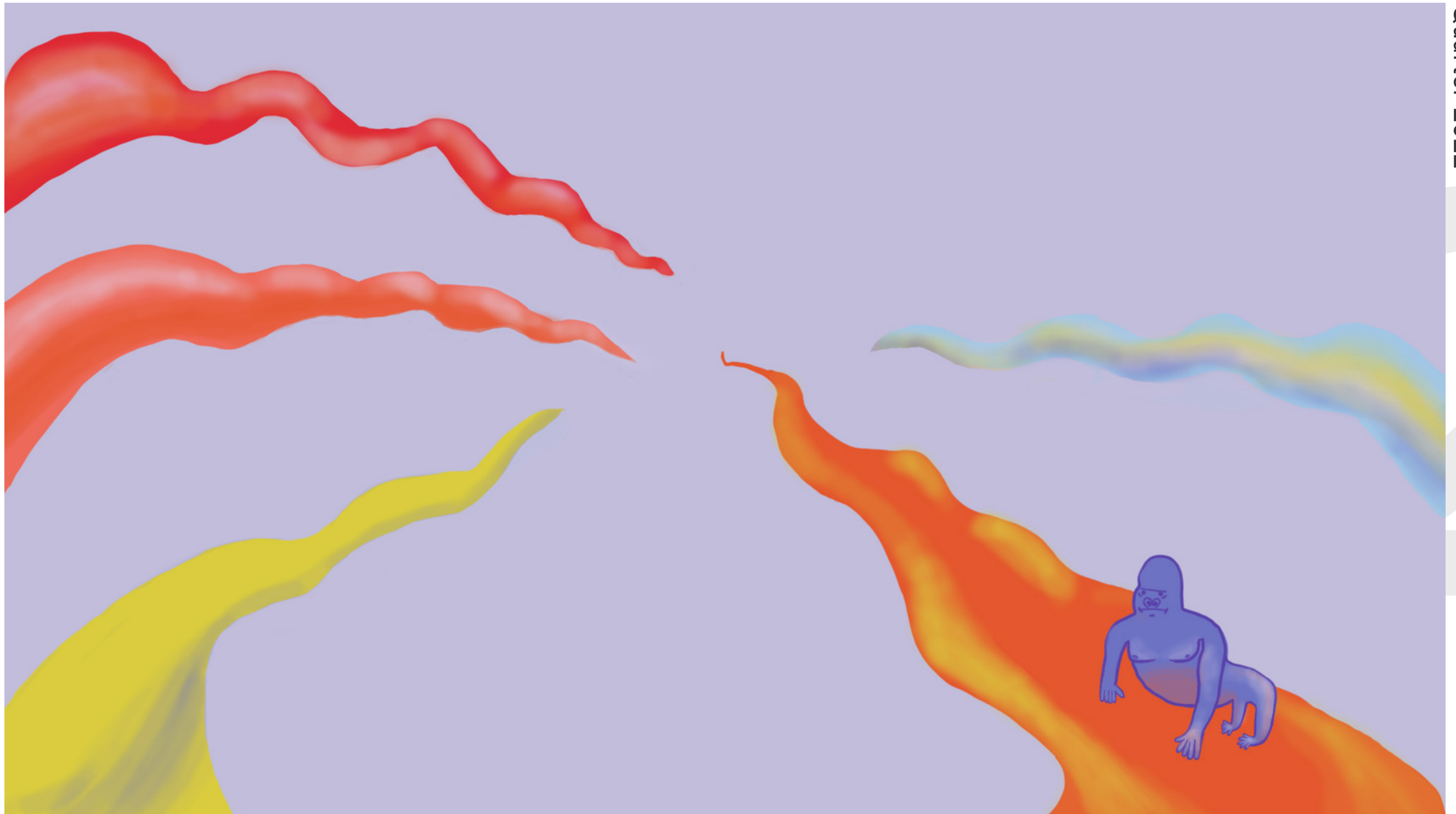


Storyboard (Continued)



Style Frames

MOME206 |
Winter Quarter 2022

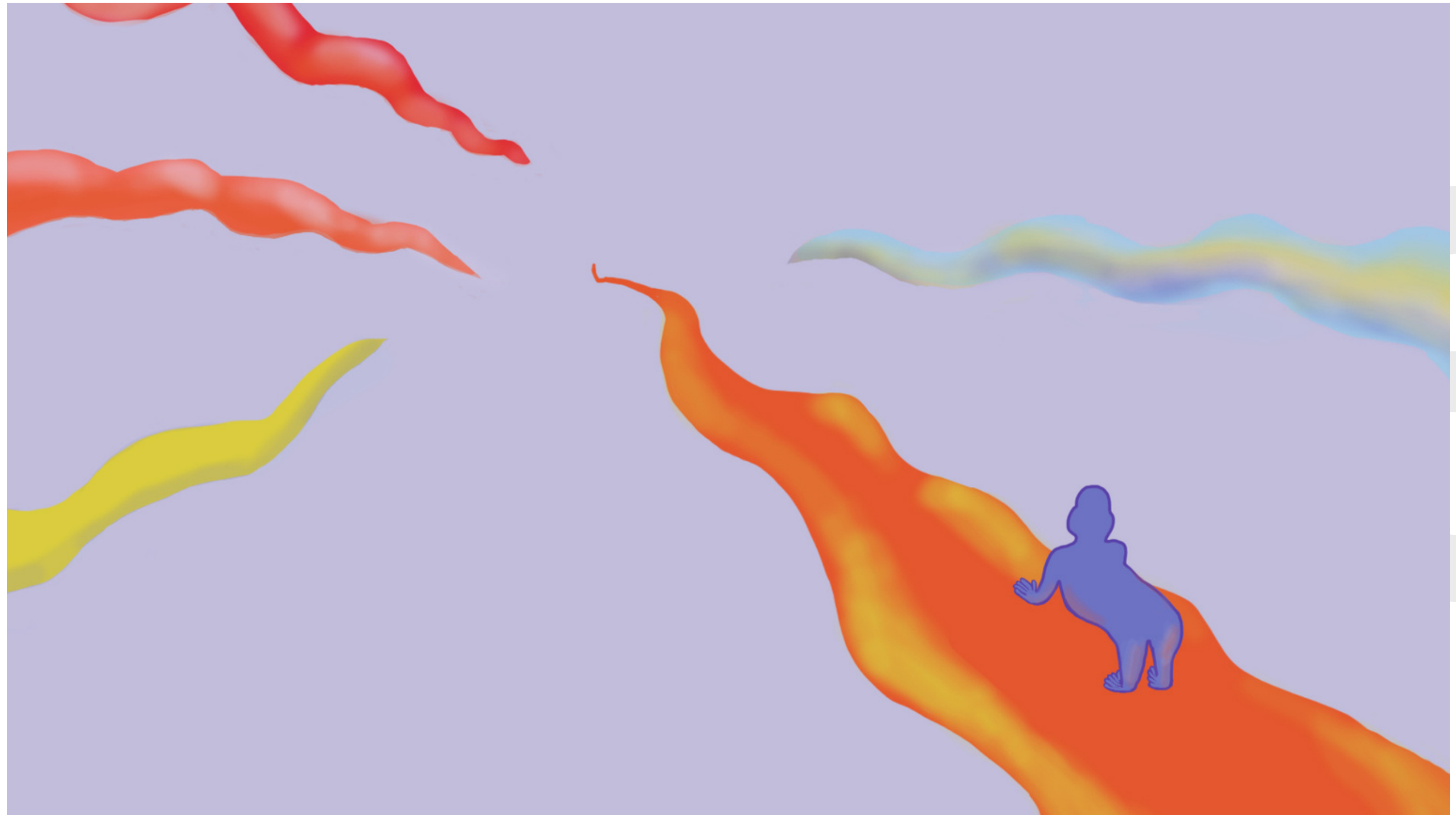


ERIN O'DONNELL



Style Frames (Continued)

MOME206 |
Winter Quarter 2022



ERIN O'DONNELL

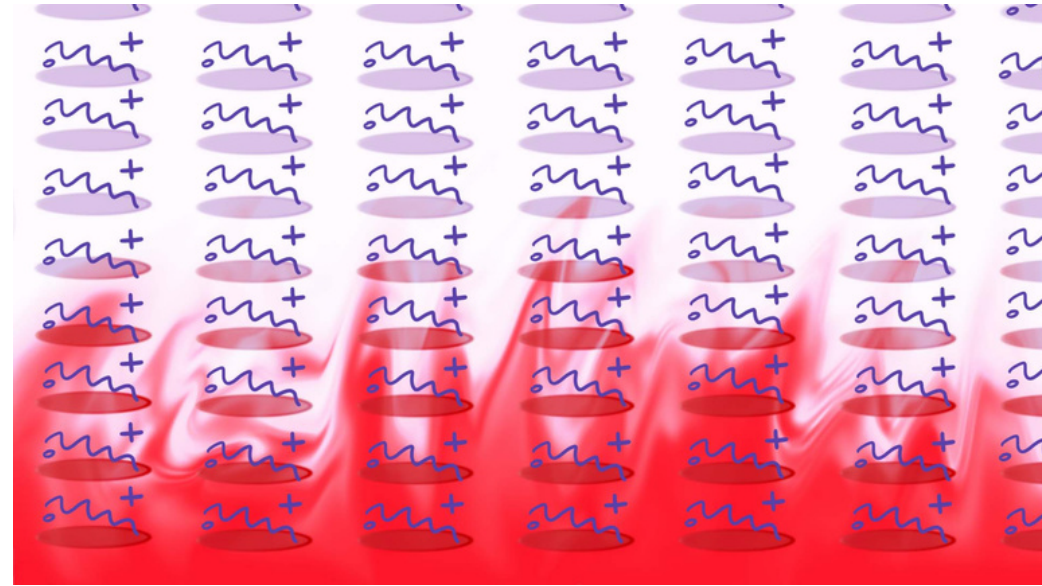
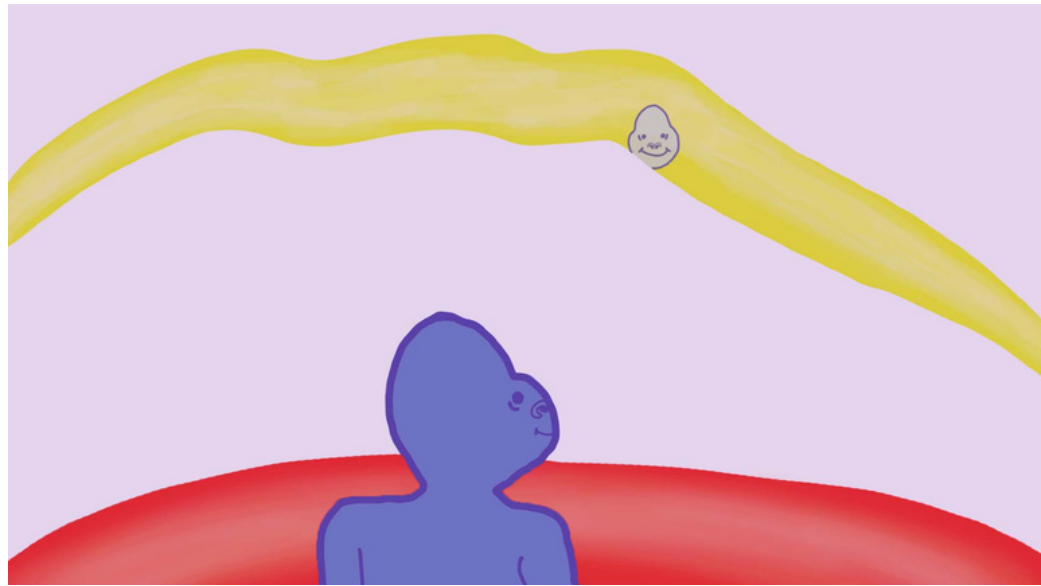
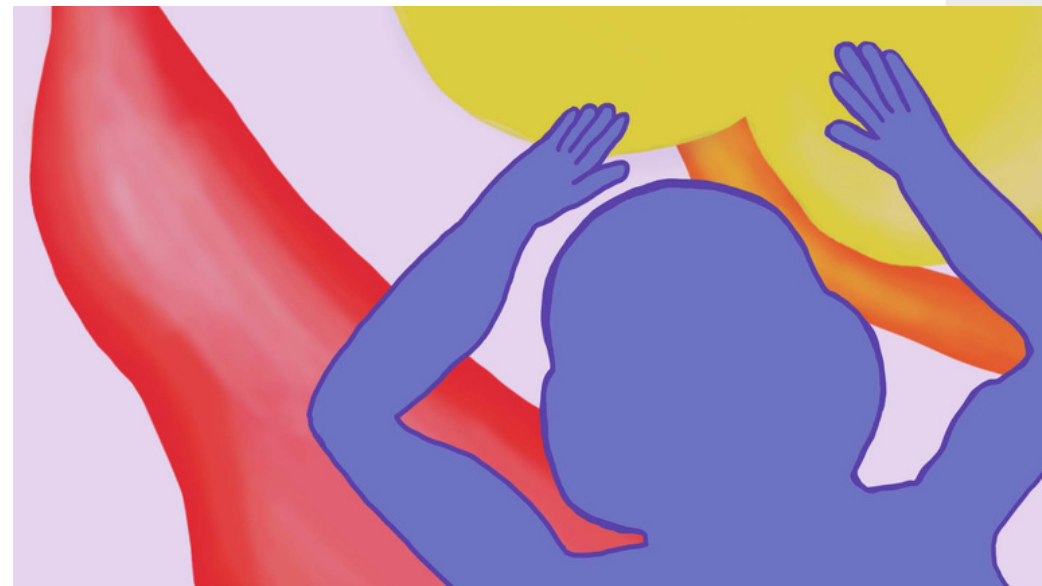
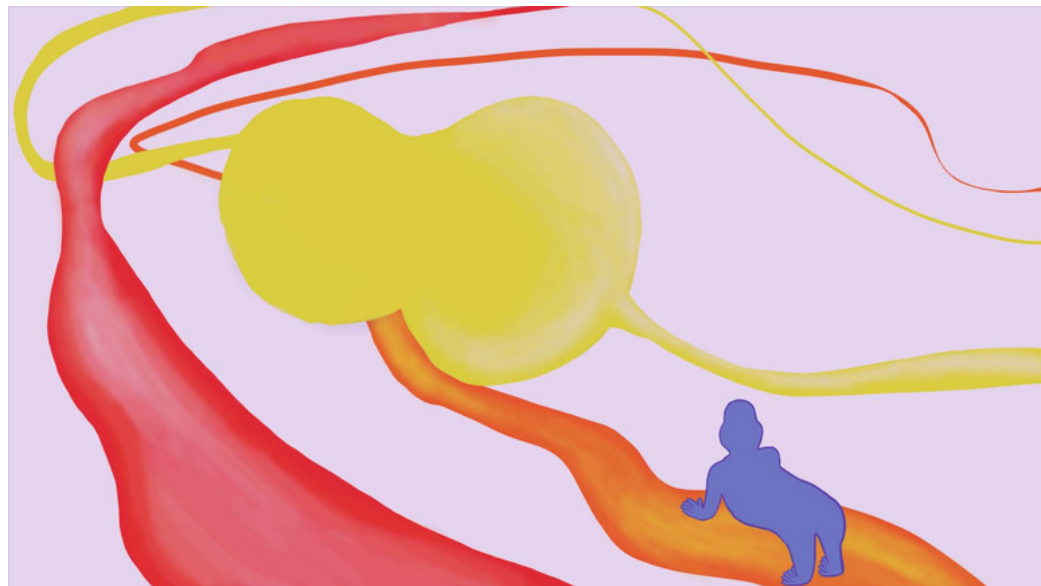
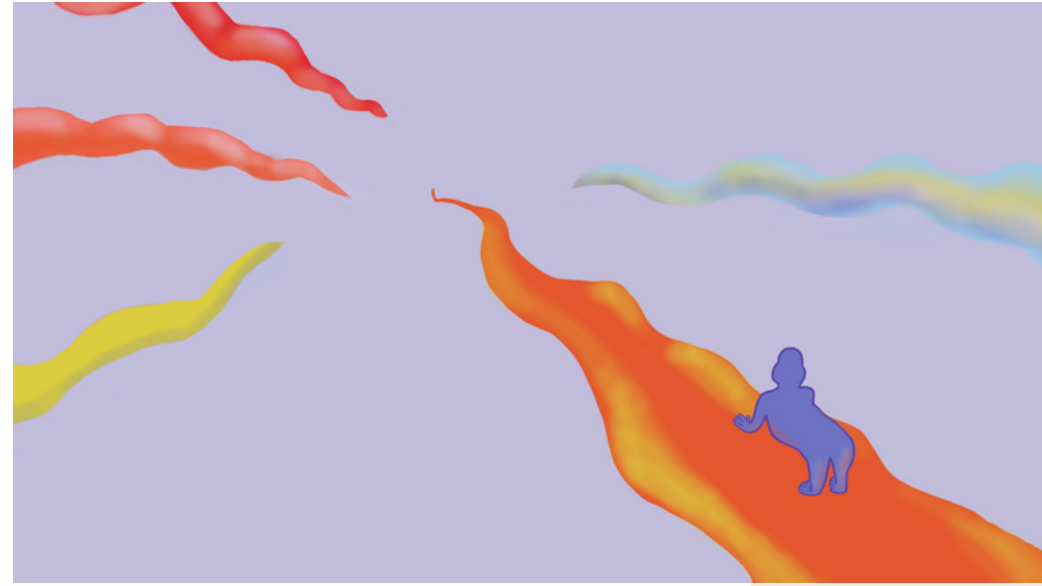
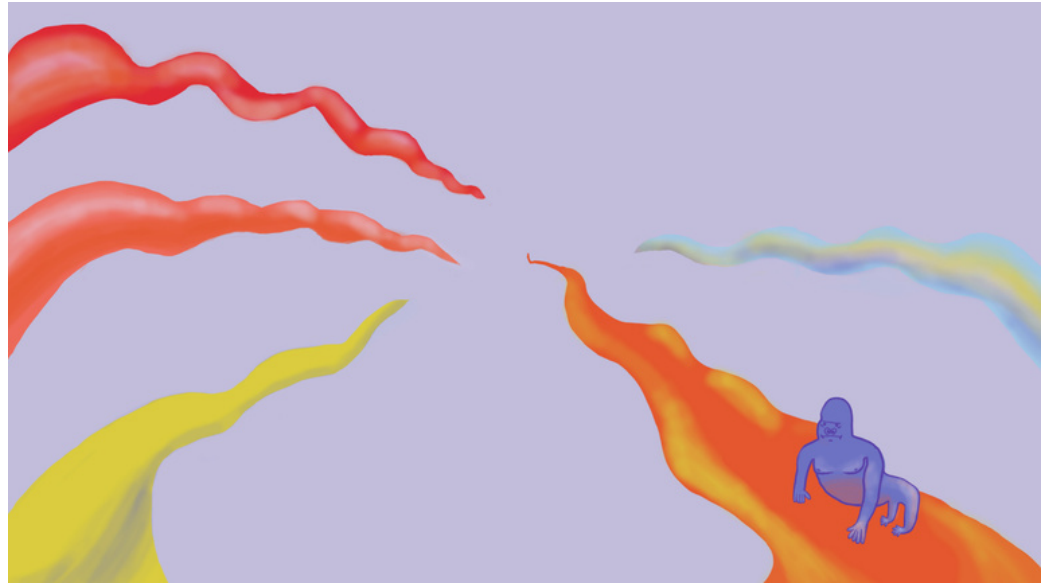


Design Board

MOME206 |
Winter Quarter 2022

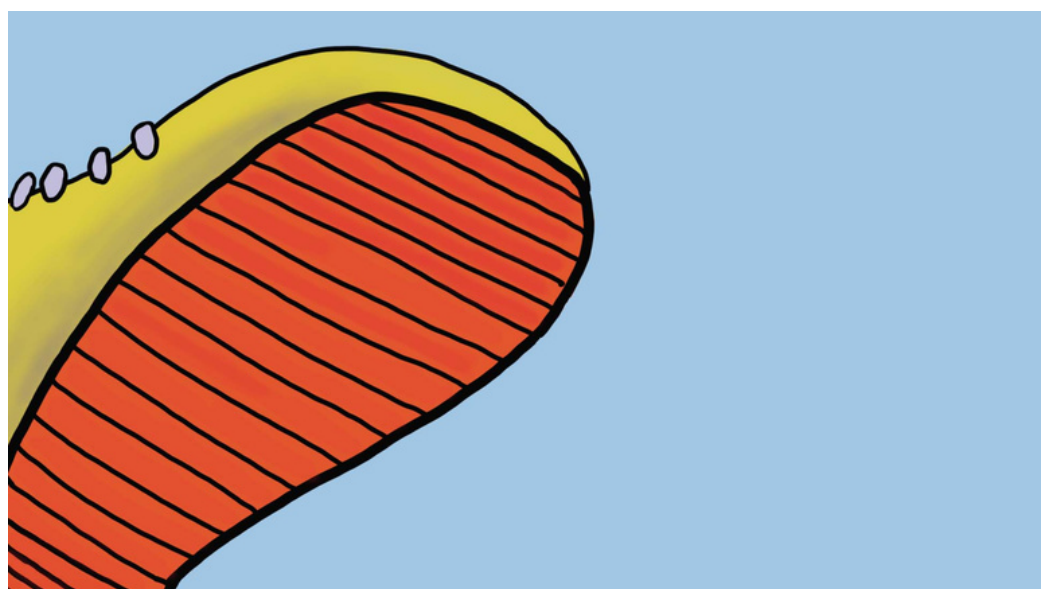
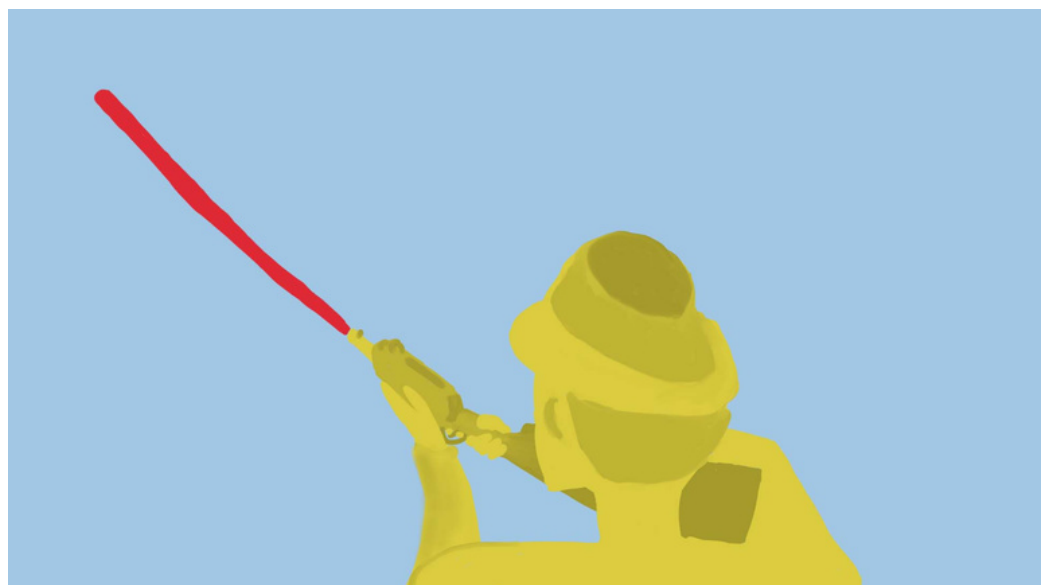
4

ERIN O'DONNELL



Design Board (Continued)

MOME206 |
Winter Quarter 2022



ERIN O'DONNELL

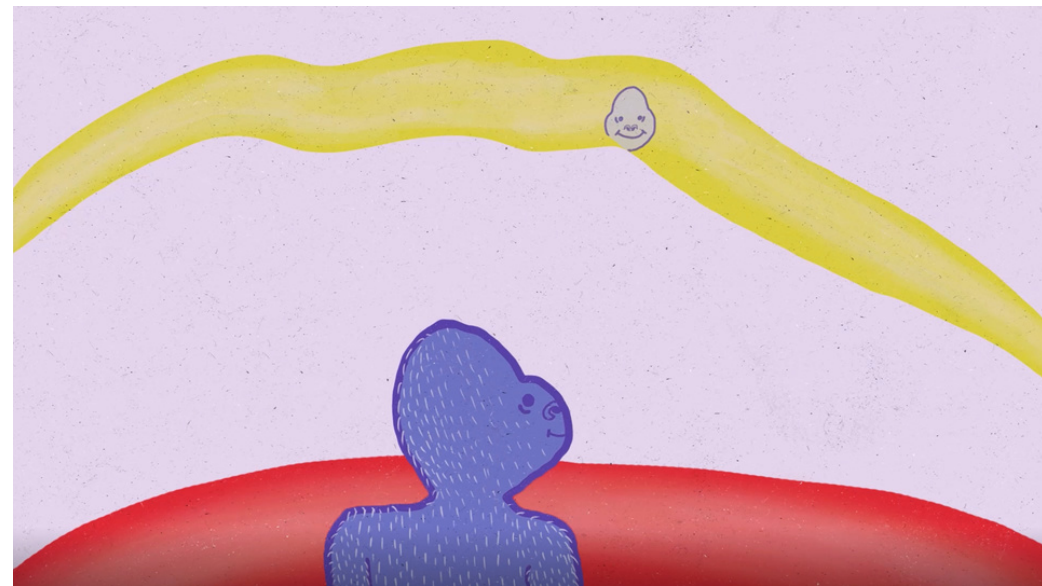
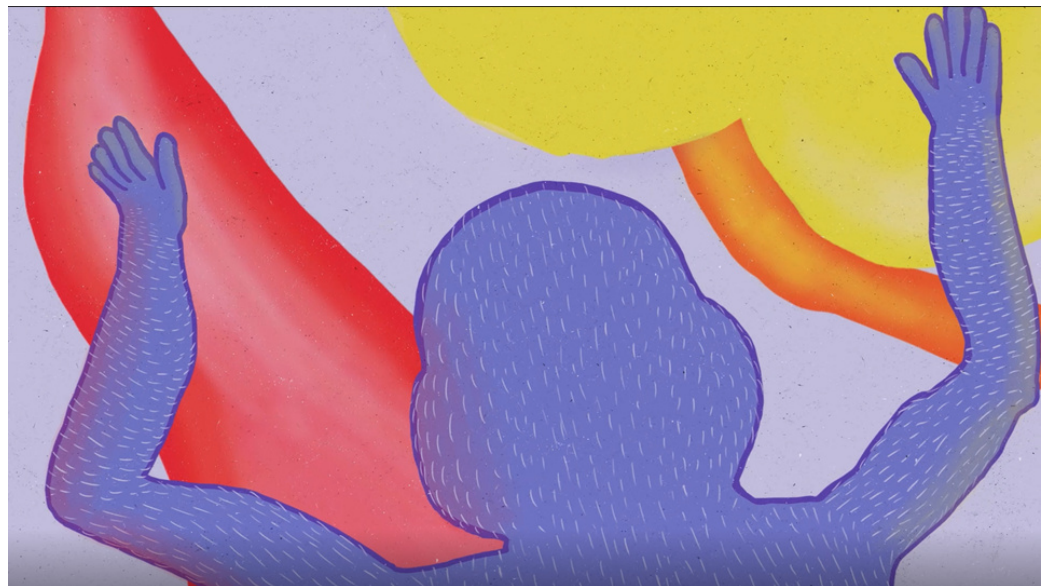
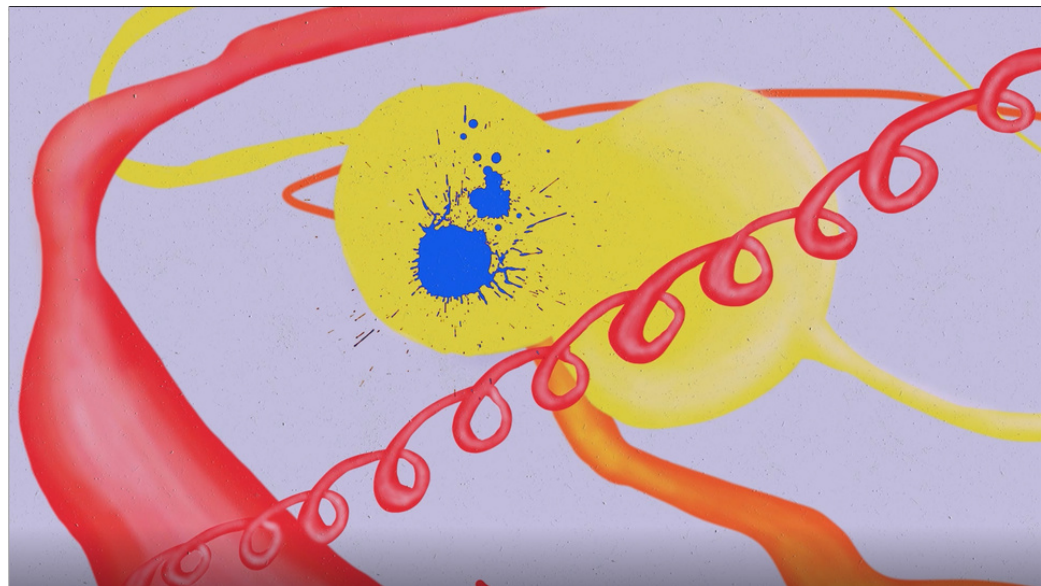
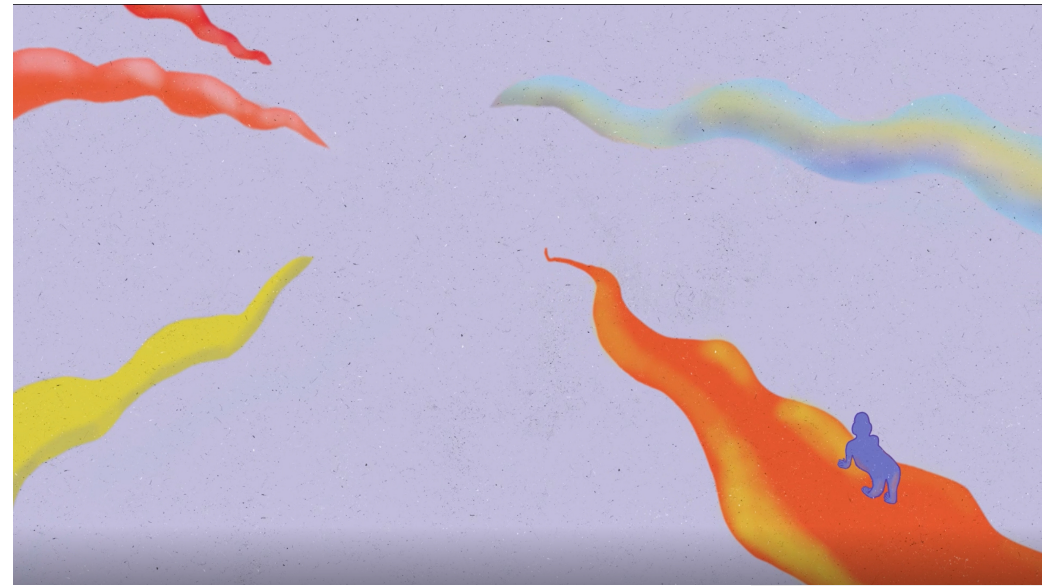
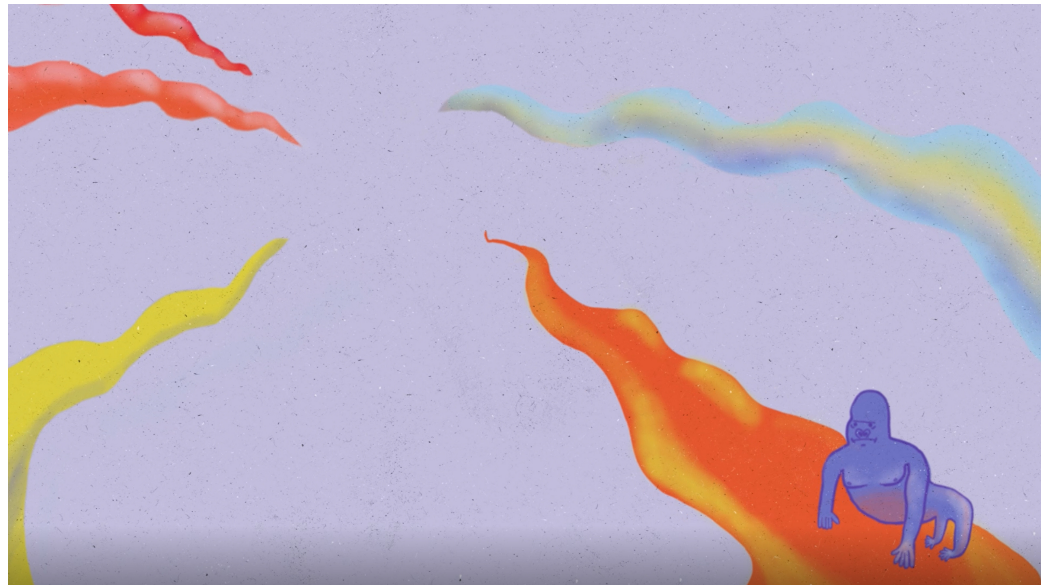


Final Design Board

MOME206 |
Winter Quarter 2022



ERIN O'DONNELL

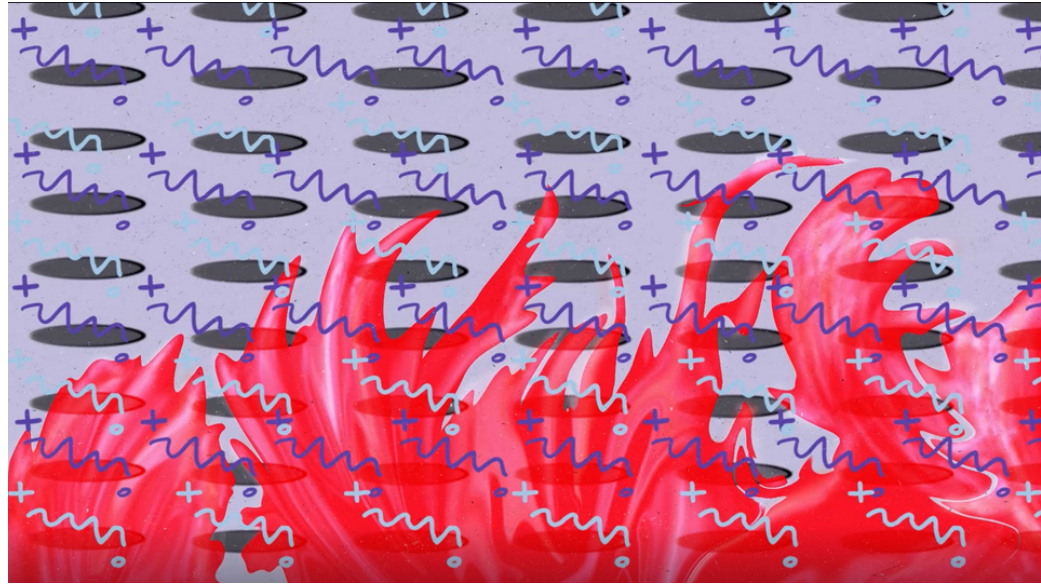


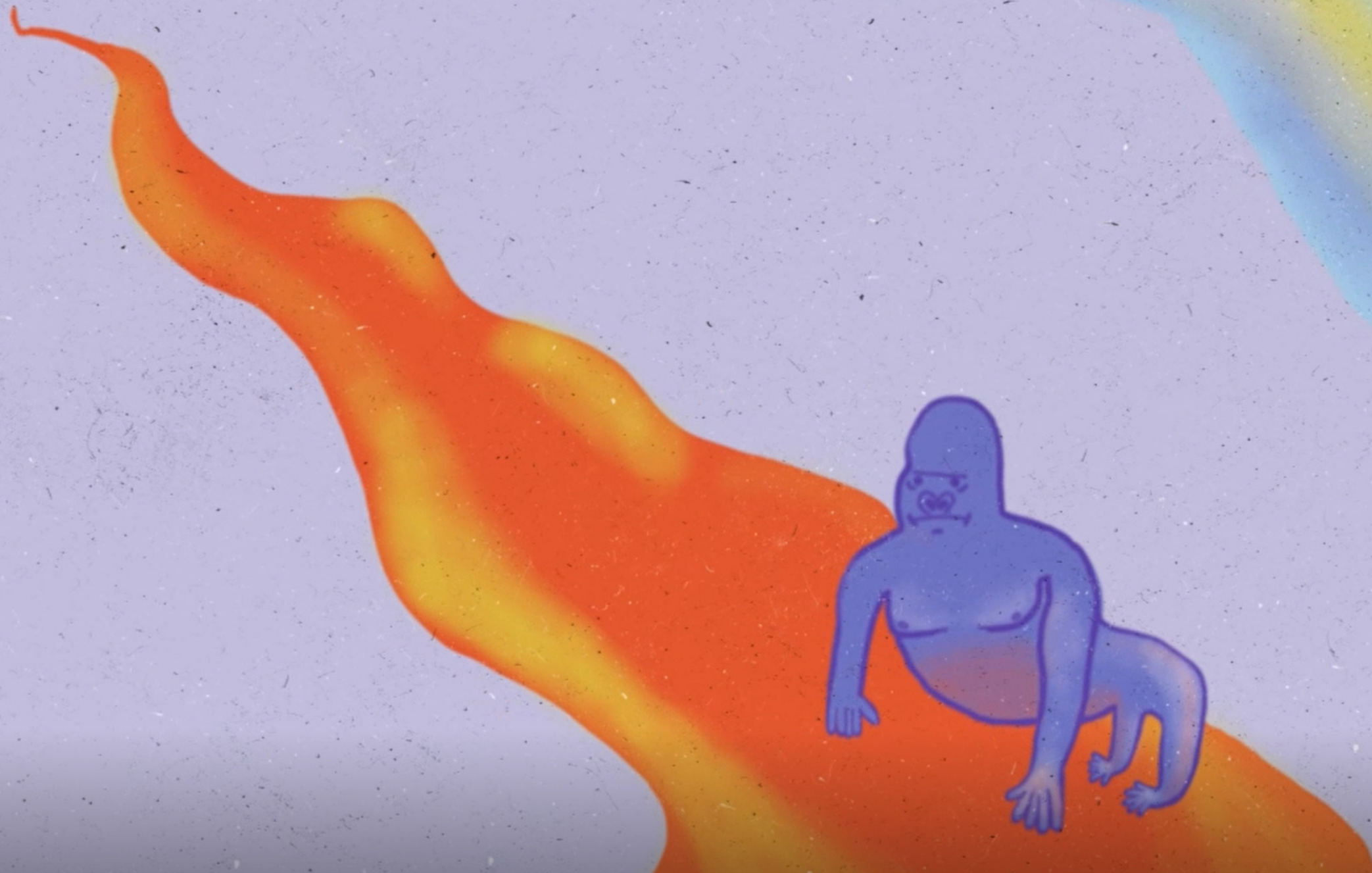
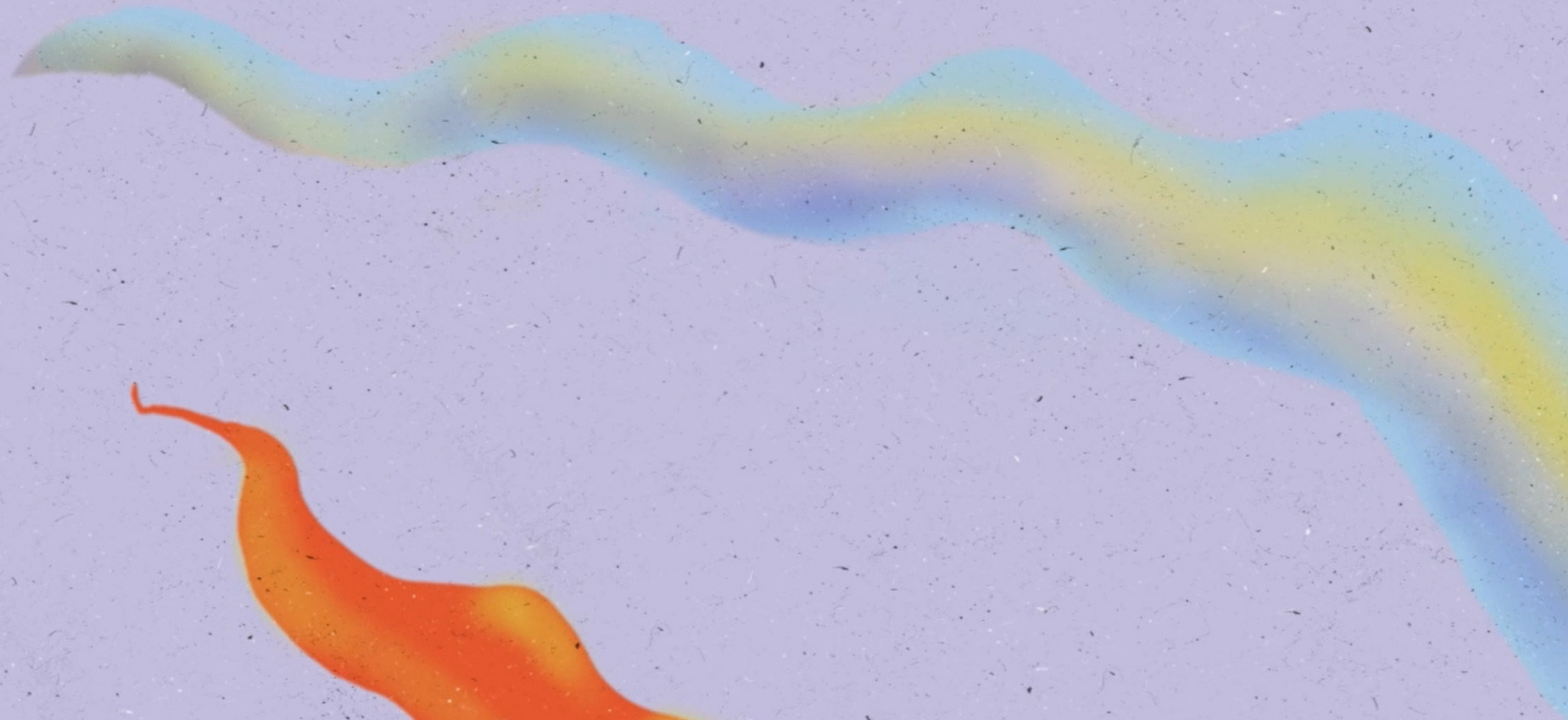
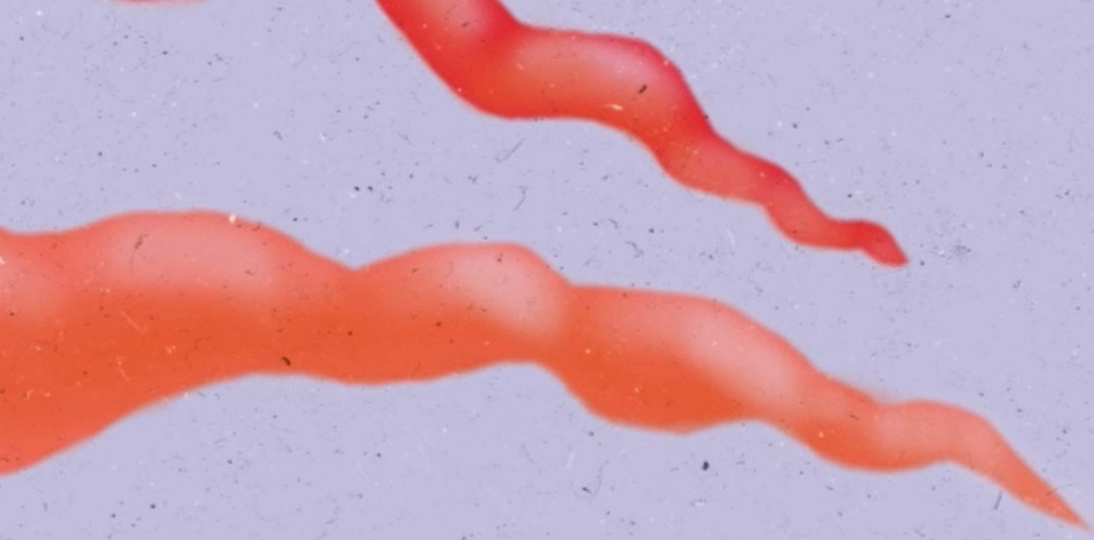
Final Design Board (continued)

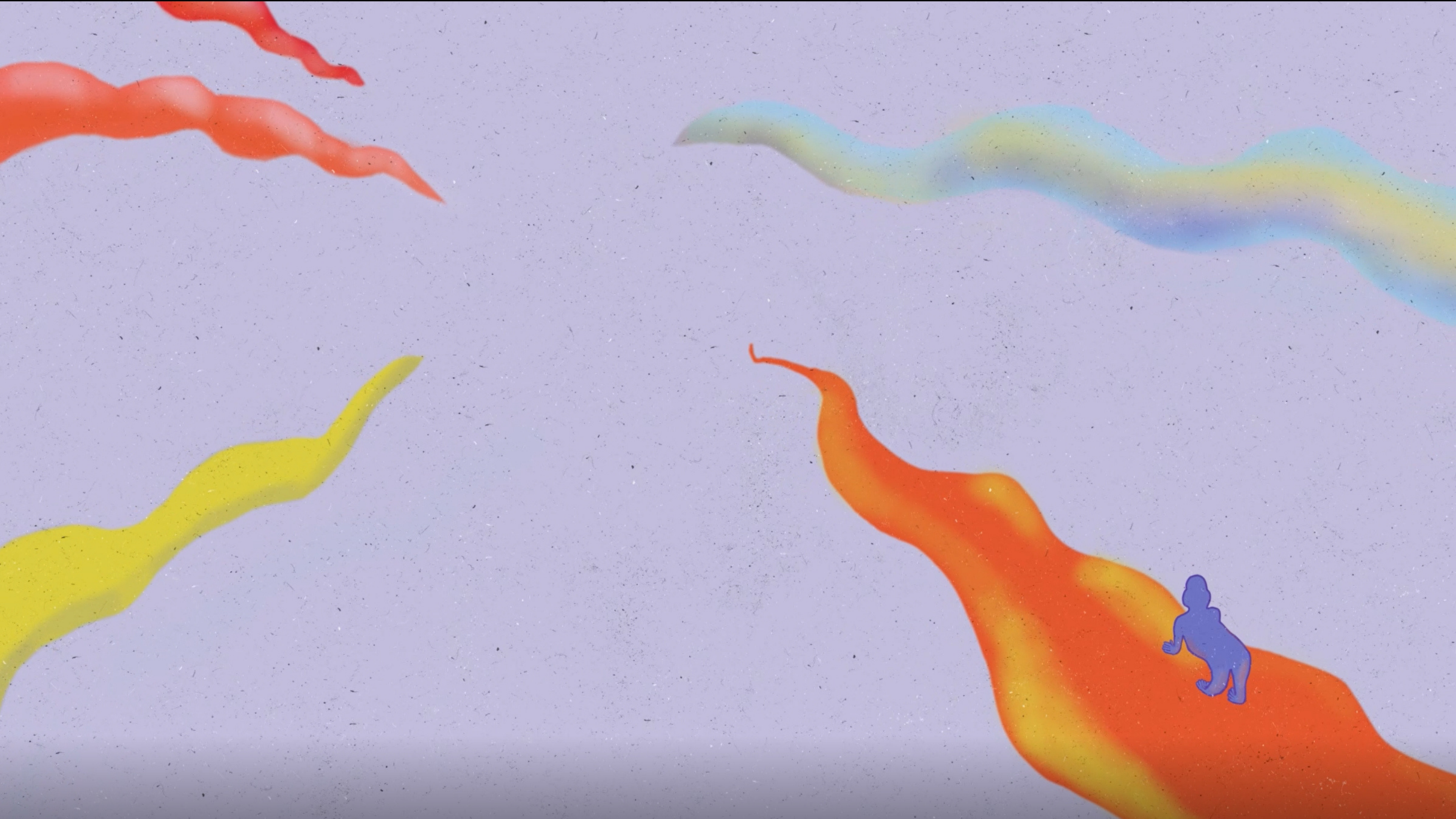
MOME206 |
Winter Quarter 2022

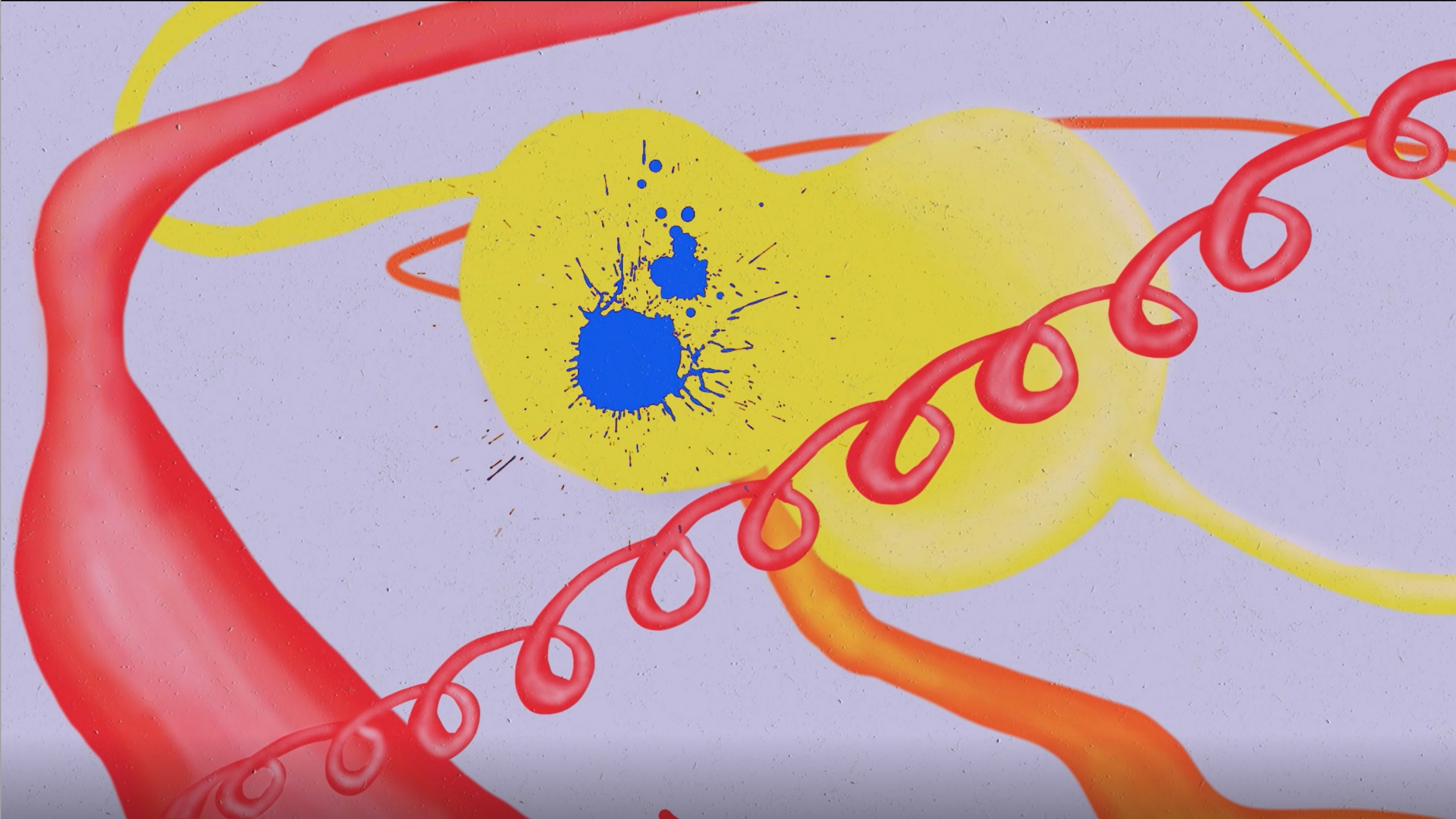
7

ERIN O'DONNELL



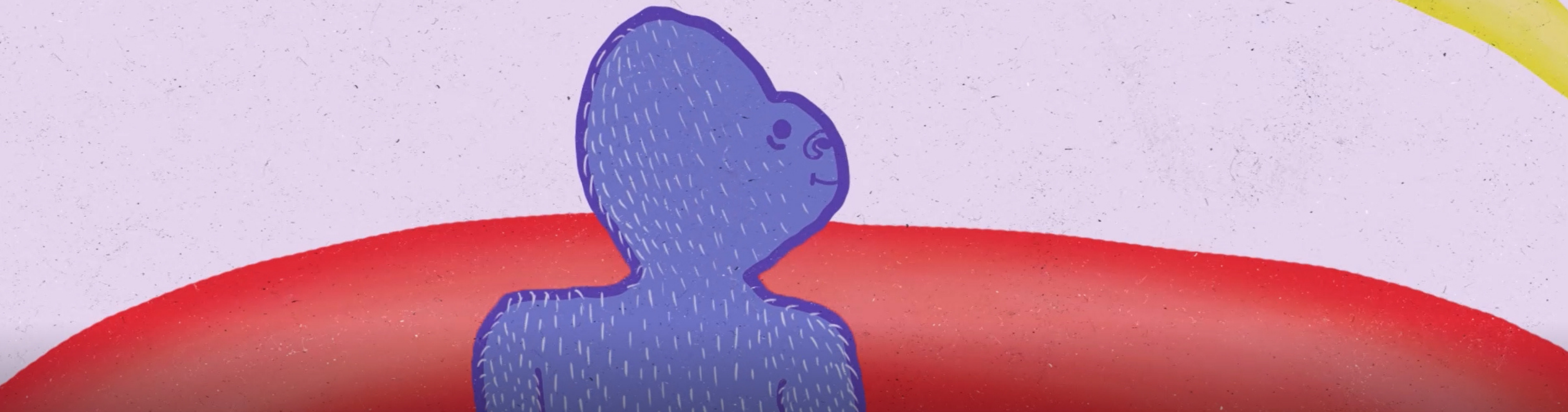
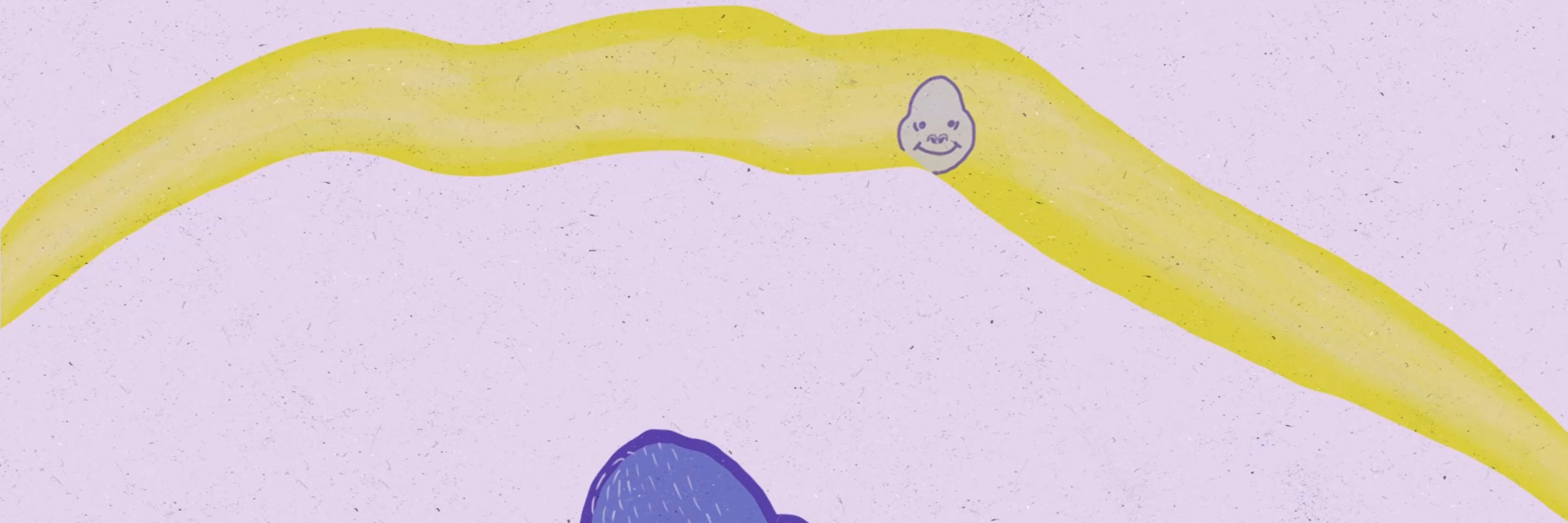


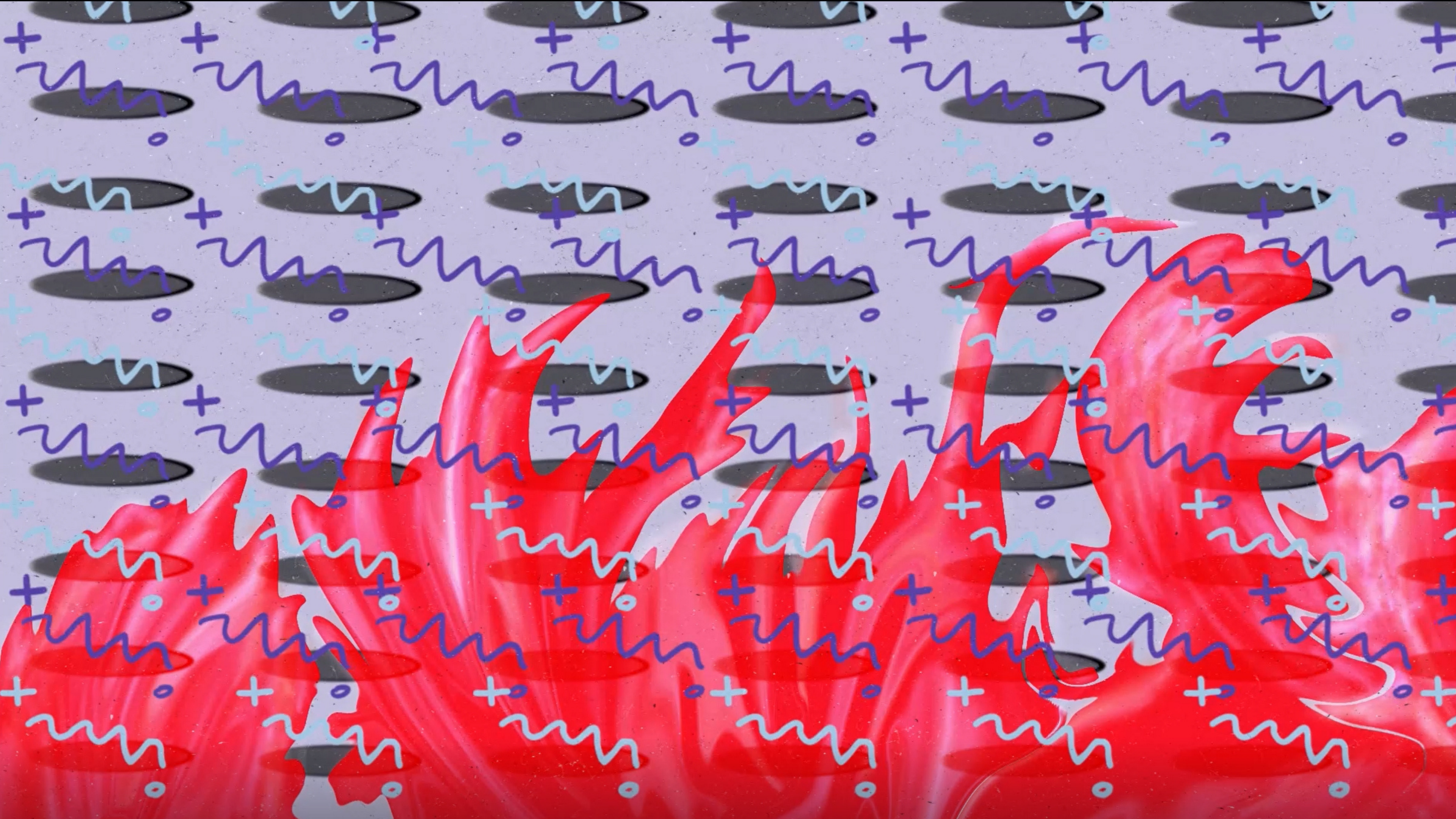














BANK





Art Basel

Miami 2022

Works Cited

<https://www.youtube.com/watch?v=JPslTzkyxZY>

<https://www.artbasel.com/about>

30

