

## Lead Agency

- Directorate for Environment, Conservation and Climate Change

## Business Trips

- Department of Lands, Physical Planning, Environment, Conservation, and Climate Change
- Dept. of Primary Industry
- Department of Commerce and Industry

## Partnerships

- The European Union-funded Forestry-Climate Change-Biodiversity (EU-FCCB) Programme
- Expertise France
- UNDP
- Conservation and Environment Protection Authority
- Climate Change Development Authority

*Authorised by the ABG Ministry for Lands, Physical Planning, Environment, Conservation, and Climate Change*

- Administered under the Department of Lands, Physical Planning, Environment, Conservation and Climate Change
- Implemented by the Directorate for Environment, Conservation and Climate Change

Supported by:



Funded by the European Union

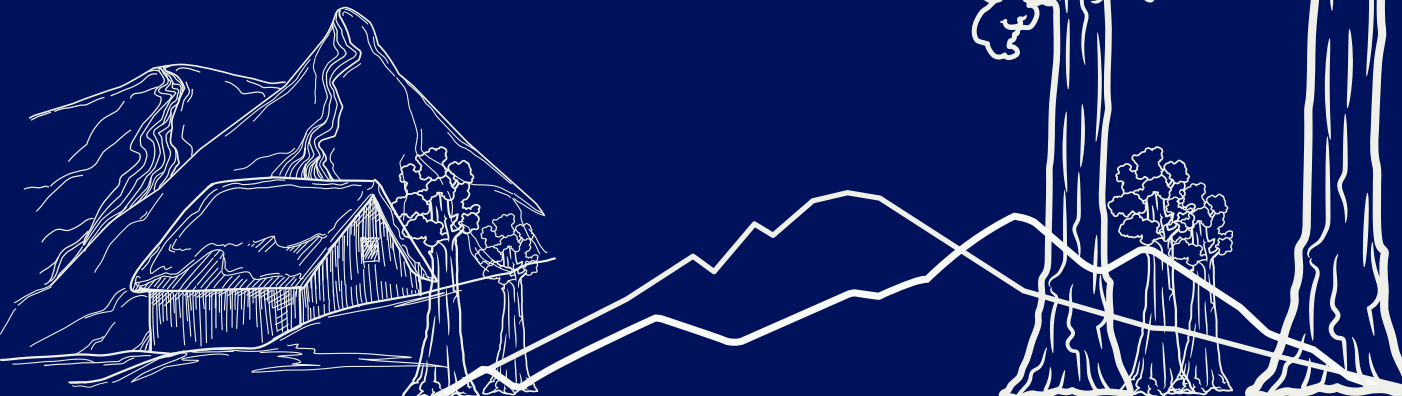


# ABG MINISTRY OF LANDS, PHYSICAL PLANNING, ENVIRONMENT, AND CLIMATE CHANGE

## ABG Green-Blue Policy Initiative



Funded by the European Union



# GBE Policy (Draft) in Brief

The Bougainville Green-Blue Economy (GBE) Policy is a homegrown initiative by the Autonomous Bougainville Government designed to position Bougainville as a sustainable economic hub, harnessing its natural resources while promoting low-carbon and eco-friendly industries. This draft policy supports Bougainville's transition towards independence by focusing on green innovation, biodiversity conservation, and sustainable development.

## Vision for the Future:

By 2027, Bougainville aims to lead the GBE, creating a sustainable future that integrates environmental protection, economic prosperity, and social well-being for all its people.

## Key Objectives:

- **Sustainable Growth:** Foster investment in green industries, eco-tourism, and low-emission technologies.
- **Environmental Stewardship:** Preserve Bougainville's rich marine and terrestrial resources through climate-conscious practices.

- **Community Empowerment:** Create green jobs, promote knowledge transfer, and build a data-driven economy.
- **Global Alignment:** Align with international agreements like the Paris Agreement and the Convention on Biological Diversity.

## ABG Interagency Working Group

The BGE Policy cuts across a number of critical sectors and therefore requires an inter-agency approach to design and implement it. The agencies involved at the political level are:

- Ministry of Lands, Physical Planning, Environment, Conservation, and Climate Change
- Ministry of Primary Industries
- Ministry of Commerce and Industry

These ministries are supported by their subsequent departments to coordinate and ensure the necessary frameworks are in place.

## International Partnerships:

Supported by the European Union, Global Environment Facility, and UNDP, the GBE Policy positions Bougainville at the forefront of sustainable development, ensuring future generations can thrive in a balanced and eco-conscious economy.

## Regional Consultations

A series of Regional consultations and a policy validation workshop will be conducted in October 2024. Below are the dates and locations for the workshops.

- 1-2 Oct  
Regional Consultation Workshop Buin
- 3-4 Oct  
Regional Consultation Workshop Arawa
- 8-9 Oct  
Regional Consultation Workshop Buka
- 16 Oct  
BGE Policy Validation Buka

