



# **HIGH PRESSURE COMPRESSORS DELIVERY SYSTEMS GAS STORAGE**

*For*

**Breathing Air, Mixed Gas, Oxygen, CNG, Nitrogen**





*35 Years of  
Excellence*

# International

Thank you for your interest in *American Eagle Systems*.  
Below is a short list of some of the equipment and services  
that we offer. Please feel free to contact our Marathon  
Florida office if you have any questions or require more  
information.

## EQUIPMENT

- \*High pressure air compressor systems from 2.5 to 145 cfm
- \*Oxygen and mixed gas filling equipment
- \*SCBA & SCUBA refilling containment
- \*Compressed natural gas (CNG) HP compressor systems
- \*Compressed natural gas (CNG) transport trailers
- \*Compressed natural gas (CNG) delivery systems
- \*Gas storage cylinders from 1800 to 7000 psi
- \*Trailer based breathing air, oxygen and mixed gas systems
- \*Custom built command and special response trailers

## SERVICES

- \*High pressure air compressor and system maintenance
- \*High pressure air compressor and system repair
- \*Hydrostatic cylinder retesting
- \*Annual cylinder inspection
- \*Oxygen refilling of medical and diving cylinders
- \*Compressor and system repair parts and accessories
- \*HP operation and maintenance certification courses
- \*Special response team certification courses

### **MDEA INTERNATIONAL INC. FAMILY**

**Multinational  
Diving Educators  
Association**

***Ocean Equipment***

***American Eagle  
Systems***

***Accurate Hydro***

***Airplanes Plus***

***MDEA Institute of  
Diving  
Technology***

***Innerspace  
Consolidated  
Systems***



## HOME OFFICE:

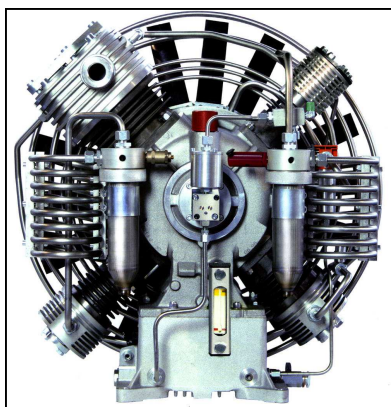
4940 Ocean Terrace, Marathon Florida 33050 USA \* Voice: 305-743-6188 Fax: 305-7 43-7499  
Email: [aesinternaional@hotmail.com](mailto:aesinternaional@hotmail.com)



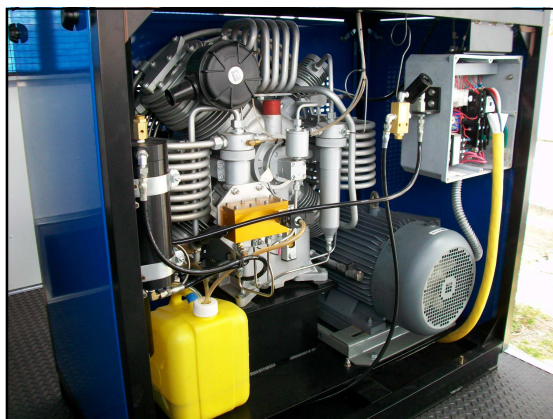
# AE-20/10/7 HIGH PRESSURE BREATHING AIR COMPRESSOR SYSTEM



**AE-20, AE-10 & AE 7.5 Motor Access**



**AE-10 & AE-7.5 Pumping Group**



**AE-20 Pumping Group**

**HOME OFFICE:**

4940 Ocean Terrace, Marathon Florida 33050 USA \* Voice: 305-743-6188 Fax: 305-743-7499  
Web Site: [www.mdeainternational.com](http://www.mdeainternational.com) Email: [mdea@mdeainternational.com](mailto:mdea@mdeainternational.com)



# AE-20 HIGH PRESSURE BREATHING AIR COMPRESSOR SYSTEM



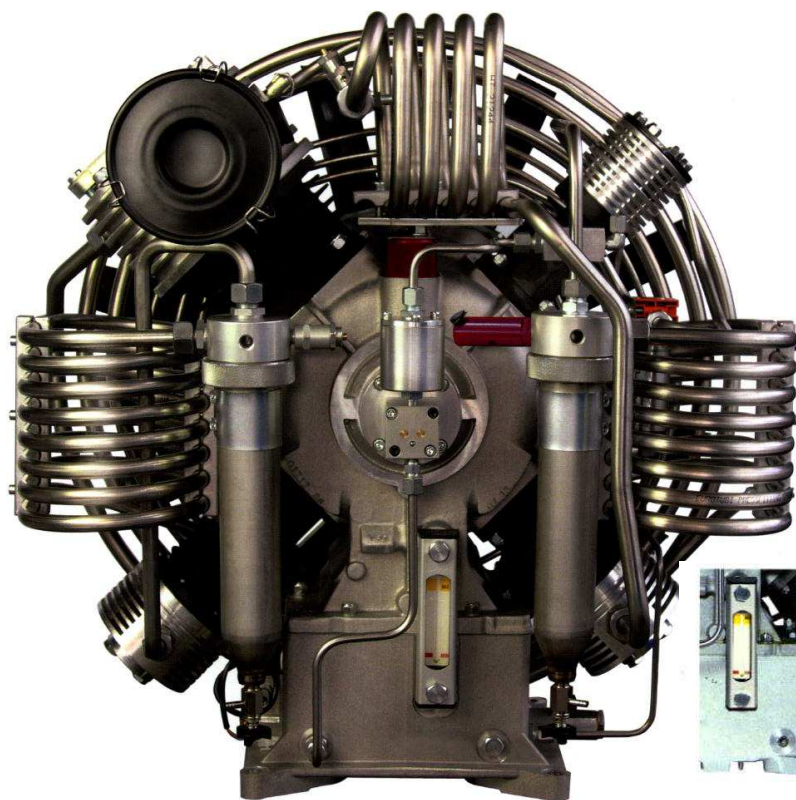
**AE20-C Enclosed Cabinet,  
Fully Automatic System**

## STANDARD FEATURES

- ◆ All Aluminum Cabinet and Frame
- ◆ Built in Forklift Lifting Receivers
- ◆ Quick Open/Removable Panels All Sides
- ◆ Rubber Isolated Motor/Compressor Base
- ◆ Gauge Panel with Hour Meter
- ◆ Emergency Stop "E-Stop"
- ◆ 26,000 cu ft Filtration
- ◆ Separators with Automatic Drain
- ◆ Auto Drain Silencer
- ◆ Condensate Collector
- ◆ Adjustable High Pressure Shut Down
- ◆ CO & Moisture Indicator

## OPTIONAL FEATURES

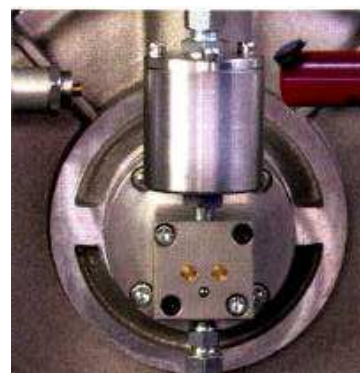
- ◆ 65,000 cu ft Filtration
- ◆ Electronic CO Monitor
- ◆ Built in Nitrox Continues Blender
- ◆ Built in Nitrox/TriMix Continues Blender
- ◆ Built in Lab On Local 2™  
(Real time air testing/monitoring)



**AE-20 Pumping Group**



**Quick Check Oil**



**Large, External Oil Filter**

MODEL	PSI	HP	CFM	STAGES	RPM	POWER	WEIGHT	DIMENSIONS
AE20-C	6000	20	20	4	1300	3 Phase	726	L48" x W29" x H50"

### HOME OFFICE:

4940 Ocean Terrace, Marathon Florida 33050 USA \* Voice: 305-743-6188 Fax: 305-743-7499  
Web Site: [www.mdeainternational.com](http://www.mdeainternational.com) Email: [mdea@mdeainternational.com](mailto:mdea@mdeainternational.com)



# AE-15 HIGH PRESSURE BREATHING AIR COMPRESSOR SYSTEM



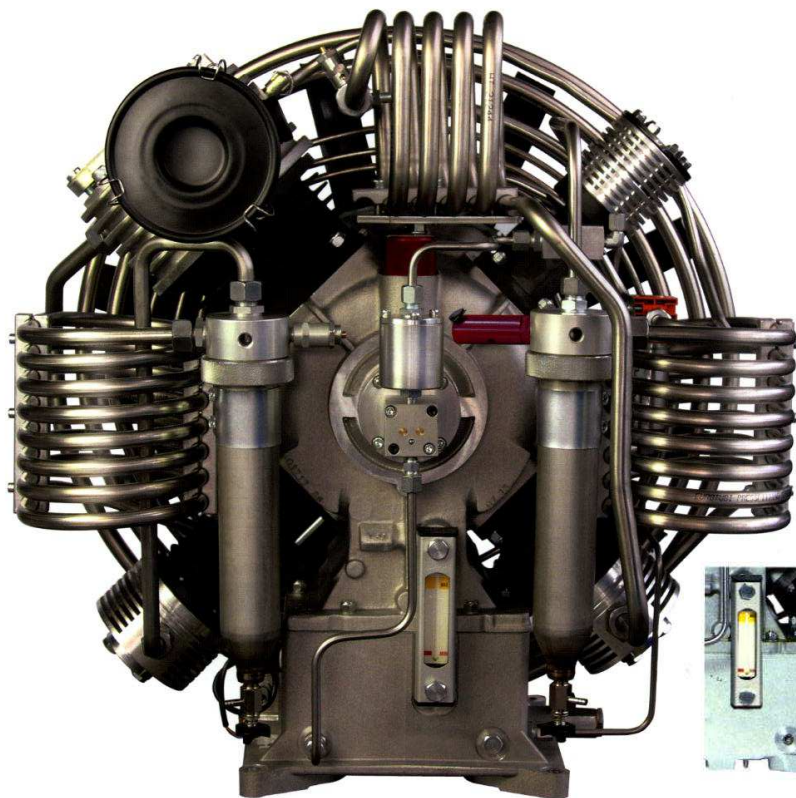
**AE15-C Enclosed Cabinet,  
Fully Automatic System**

## STANDARD FEATURES

- ◆ All Aluminum Cabinet and Frame
- ◆ Built in Forklift Lifting Receivers
- ◆ Quick Open/Removable Panels All Sides
- ◆ Rubber Isolated Motor/Compressor Base
- ◆ Gauge Panel with Hour Meter
- ◆ Emergency Stop "E-Stop"
- ◆ 26,000 cu ft Filtration
- ◆ Separators with Automatic Drain
- ◆ Auto Drain Silencer
- ◆ Condensate Collector
- ◆ Adjustable High Pressure Shut Down
- ◆ CO & Moisture Indicator

## OPTIONAL FEATURES

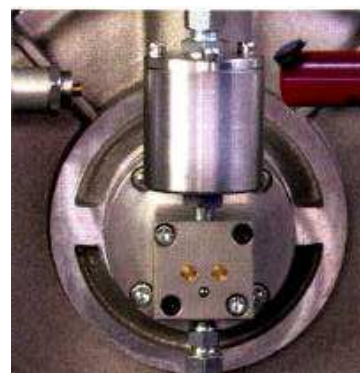
- ◆ 65,000 cu ft Filtration
- ◆ Electronic CO Monitor
- ◆ Built in Nitrox Continues Blender
- ◆ Built in Nitrox/TriMix Continues Blender
- ◆ Built in Lab On Local 2™  
(Real time air testing/monitoring)



**AE-15 Pumping Group**



**Quick Check Oil**



**Large, External Oil Filter**

MODEL	PSI	HP	CFM	STAGES	RPM	POWER	WEIGHT	DIMENSIONS
AE15-C	6000	15	15	4	1100	3 Phase	726	L48" x W29" x H50"

## HOME OFFICE:

4940 Ocean Terrace, Marathon Florida 33050 USA \* Voice: 305-743-6188 Fax: 305-743-7499  
Web Site: [www.mdeainternational.com](http://www.mdeainternational.com) Email: [mdea@mdeainternational.com](mailto:mdea@mdeainternational.com)



# AE-10 HIGH PRESSURE BREATHING AIR COMPRESSOR SYSTEM



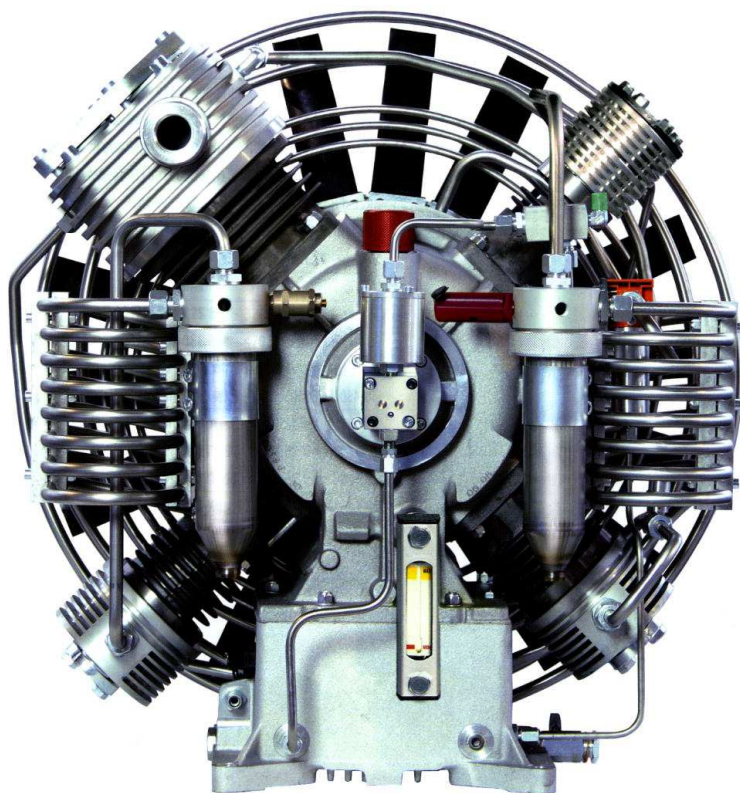
**AE10-C Enclosed Cabinet,  
Fully Automatic System**

## STANDARD FEATURES

- ◆ All Aluminum Cabinet and Frame
- ◆ Built in Forklift Lifting Receivers
- ◆ Quick Open/Removable Panels All Sides
- ◆ Rubber Isolated Motor/Compressor Base
- ◆ Gauge Panel with Hour Meter
- ◆ Emergency Stop "E-Stop"
- ◆ 26,000 cu ft Filtration
- ◆ Separators with Automatic Drain
- ◆ Auto Drain Silencer
- ◆ Condensate Collector
- ◆ Adjustable High Pressure Shut Down
- ◆ CO & Moisture Indicator

## OPTIONAL FEATURES

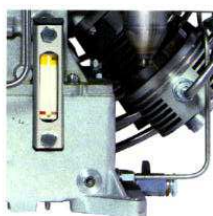
- ◆ 65,000 cu ft Filtration
- ◆ Electronic CO Monitor
- ◆ Built in Nitrox Continues Blender
- ◆ Built in Nitrox/TriMix Continues Blender
- ◆ Built in Lab On Local 2™  
(Real time air testing/monitoring)



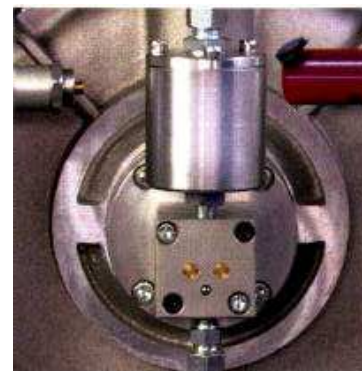
**AE-10 Pumping Group**

## Benefits of Low RPM Technology

Long Life  
Low Noise  
High Efficiency with Reduced Heat



**Quick Check Oil**



**Large, External Oil Filter**

**Extremely  
LOW RPM**

MODEL	PSI	HP	CFM	STAGES	RPM	POWER	WEIGHT	DIMENSIONS
AE10-C	6000	10	10	4	950	1 or 3 Phase	620	L48" x W29" x H50"

## HOME OFFICE:

4940 Ocean Terrace, Marathon Florida 33050 USA \* Voice: 305-743-6188 Fax: 305-743-7499  
Web Site: [www.mdeainternational.com](http://www.mdeainternational.com) Email: [mdea@mdeainternational.com](mailto:mdea@mdeainternational.com)



# AE-7 HIGH PRESSURE BREATHING AIR COMPRESSOR SYSTEM

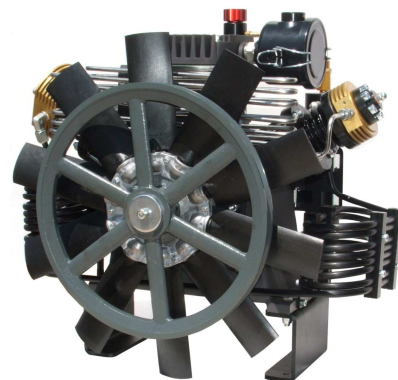
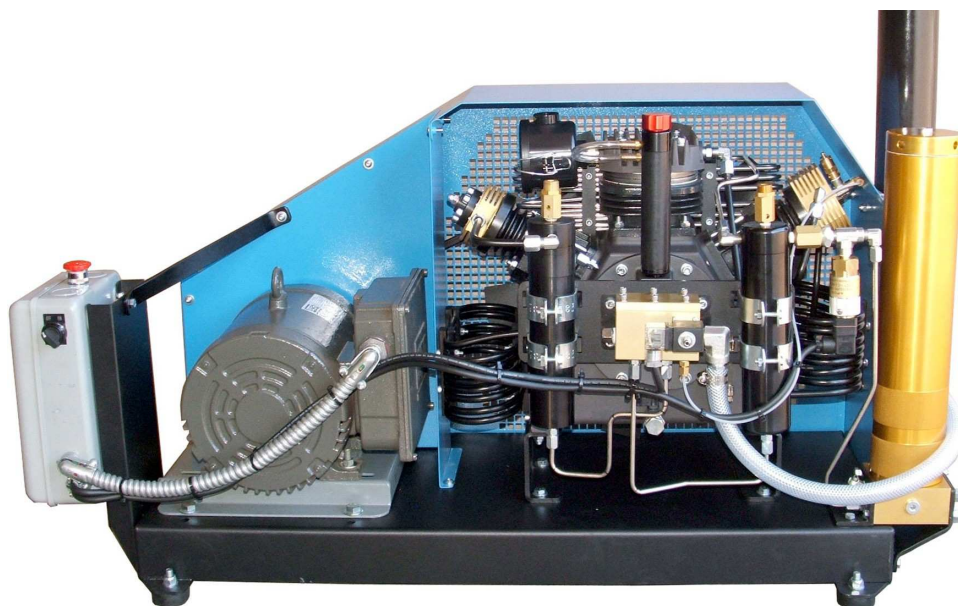


*All Aluminum  
Cabinet and  
Frame*

*Quick Open/  
Removable  
Panels All  
Sides*



**AE7-C Enclosed, Fully Automatic System**



**AE7-I Industrial, Fully Automatic System**

**AE-7 Pumping Group**

**HOME OFFICE:**

4940 Ocean Terrace, Marathon Florida 33050 USA \* Voice: 305-743-6188 Fax: 305-743-7499

Web Site: [www.mdeainternational.com](http://www.mdeainternational.com) Email: [mdea@mdeainternational.com](mailto:mdea@mdeainternational.com)



# AE-7 HIGH PRESSURE BREATHING AIR COMPRESSOR SYSTEM



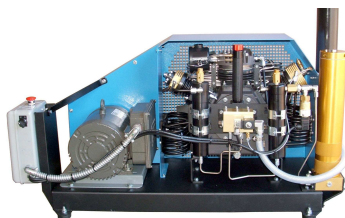
**AE7-C Enclosed Cabinet,  
Fully Automatic System**

## STANDARD FEATURES

- ◆ All Aluminum Cabinet and Frame
- ◆ Built in Forklift Lifting Receivers
- ◆ Quick Open/Removable Panels All Sides
- ◆ Rubber Isolated Motor/Compressor Base
- ◆ Gauge Panel with Hour Meter
- ◆ Emergency Stop "E-Stop"
- ◆ 26,000 cu ft Filtration
- ◆ Separators with Automatic Drain
- ◆ Auto Drain Silencer
- ◆ Condensate Collector
- ◆ Adjustable High Pressure Shut Down
- ◆ CO & Moisture Indicator

## OPTIONAL FEATURES

- ◆ 65,000 cu ft Filtration
- ◆ Electronic CO Monitor
- ◆ Built in Nitrox Continues Blender
- ◆ Built in Nitrox/TriMix Continues Blender
- ◆ Built in Lab On Local 2™  
(Real time air testing/monitoring)



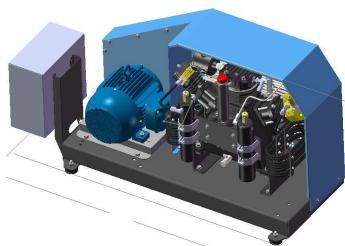
**AE7-I & AE5-I Industrial,  
Fully Automatic System**

## STANDARD FEATURES

- ◆ Inter-Stage Pressure Gauges & Hour Meter
- ◆ Emergency Stop "E-Stop"
- ◆ 9,000 cu ft Filtration
- ◆ Separators with Automatic drain
- ◆ Auto Drain Silencer
- ◆ Condensate Collector
- ◆ Adjustable High Pressure Shut Down
- ◆ CO & Moisture Indicator

## OPTIONAL FEATURES

- ◆ 26,000 cu ft Filtration
- ◆ Remote Mounted Electronic CO Monitor
- ◆ Remote Mounted Nitrox Continues Blender
- ◆ Remote Mounted Nitrox/TriMix Continues Blender
- ◆ Remote Mounted Lab On Local 2™  
(Real time air testing/monitoring)



**AE7-I-M & AE5-I-M  
Industrial Manual System**

## STANDARD FEATURES

- ◆ Magnetic Starter
- ◆ Hour Meter
- ◆ Emergency Stop "E-Stop"
- ◆ 9,000 cu ft Filtration
- ◆ Separators with Manual Drain
- ◆ CO & Moisture Indicator

## OPTIONAL FEATURES

- ◆ Inter-Stage Pressure Gauges
- ◆ 26,000 cu ft Filtration
- ◆ Separators with Automatic drain
- ◆ Auto Drain Silencer
- ◆ Condensate Collector
- ◆ Adjustable High Pressure Shut Down
- ◆ CO & Moisture Indicator

MODEL	PSI	HP	CFM	STAGES	RPM	POWER	WEIGHT	DIMENSIONS
AE7-C	5000	7.5	7.5	3	1500	1 or 3 Phase	400	L48" x W29" x H50"
AE7-V	5000	7.5	7.5	3	1500	1 or 3 Phase	450	
AE7-I	5000	7.5	7.5	3	1500	1 or 3 Phase	320	L48" x W20" x H26"
AE7-I-M	5000	7.5	7.5	3	1500	1 or 3 Phase	320	L48" x W20" x H26"
AE5-I	5000	5.0	5.0	3	1100	1 or 3 Phase	300	L48" x W20" x H26"
AE5-I-M	5000	5.0	5.0	3	1100	1 or 3 Phase	300	L48" x W20" x H26"

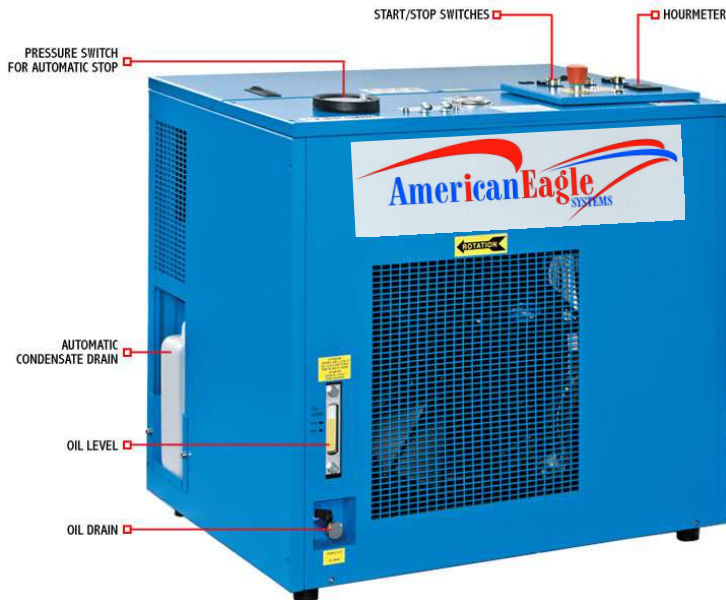
### HOME OFFICE:

4940 Ocean Terrace, Marathon Florida 33050 USA \* Voice: 305-743-6188 Fax: 305-743-7499  
Web Site: [www.mdeainternational.com](http://www.mdeainternational.com) Email: [mdea@mdeainternational.com](mailto:mdea@mdeainternational.com)





# AE-9 SILENT HIGH PRESSURE BREATHING AIR COMPRESSOR SYSTEM



## FEATURES THIS SYSTEM

- ♦ Super Quiet Operation
- ♦ Pressure Gauges & Hour Meter
- ♦ 26,000 cu ft Filtration
- ♦ Separators with Automatic drain
- ♦ Auto Drain Silencer
- ♦ Condensate Collector
- ♦ Adjustable High Pressure Shut Down
- ♦ Weather Resistant Controls & Box

- Charging Rate: 10 SCFM- 9 FCFM
- Number Stages & Cylinders: 3
- Standard Working Pressure: 4000 psi
- Max Pressure: 4700 psi
- Full Amp Load 14A (230v) 29A (115V)
- Dimensions: L 36.2" x W 24.0" x H 34.6"
- Weight: 459 lbs
- Noise Level 74.5 dB



## HOME OFFICE:

4940 Ocean Terrace, Marathon Florida 33050 USA \* Voice: 305-743-6188 Fax: 305-743-7499

Web Site: [www.mdeainternational.com](http://www.mdeainternational.com) Email: [mdea@mdeainternational.com](mailto:mdea@mdeainternational.com)

# AE-3 SILENT HIGH PRESSURE BREATHING AIR COMPRESSOR SYSTEM



## FEATURES THIS SYSTEM

- ◆ Super Quiet Operation
- ◆ Pressure Gauges & Hour Meter
- ◆ 7,500 cu ft Filtration
- ◆ Separators with Automatic drain
- ◆ Auto Drain Silencer
- ◆ Condensate Collector
- ◆ Adjustable High Pressure Shut Down
- ◆ Weather Resistant Controls & Box

- Charging Rate: 3.5 SCFM—2.8 FCFM
- Number Stages & Cylinders: 4
- Standard Working Pressure: 3200 psi
- Max Pressure: 4700 psi
- Full Amp Load 14A (230v) 29A (115V)
- Dimensions: L 26" x W 19.7" x 33"
- Weight: 187 lbs
- Noise Level 66 dB

Filling connection

Hourmeter

Pressure gauge

Start and stop

Cooling fan

Maxifilter with  
activated carbon  
and molecular sieve

Oil drain

Autostop

Safety valve

Water separator

Autodrain  
with timer

Condensate drain  
valve

Soundproof cabin



## HOME OFFICE:

4940 Ocean Terrace, Marathon Florida 33050 USA \* Voice: 305-743-6188 Fax: 305-743-7499  
Web Site: [www.mdeainternational.com](http://www.mdeainternational.com) Email: [mdea@mdeainternational.com](mailto:mdea@mdeainternational.com)





# Cylinder Fragmentation Containment Stations



**By Proud  
Americans**

## **One, Two & Three Cylinder Stations**

*Manual Safety Locking Bar*

*Inlet Connector From Cascade or  
Optional Panel*

*Fill Hoses with Bleed Valve and SCBA  
Fill Adapters.*

*Teflon Slides to Protect From Scuffing*

*Venting at Back & Bottom for Operator  
Safety.*



## **Optional Control Panel**

*Four (4) Bank Controls with 2 1/2" Gauges*

*6000psi Reducing Regulator*

*2 1/2" Regulator Pressure Gauge*

*Four Inch (4") Fill Pressure Gauge*

*One (1) Auxiliary Outlet with Valve*

**OXYGEN CYLINDER FILL  
CONTAINMENT STATIONS NOW AVAILABLE!**

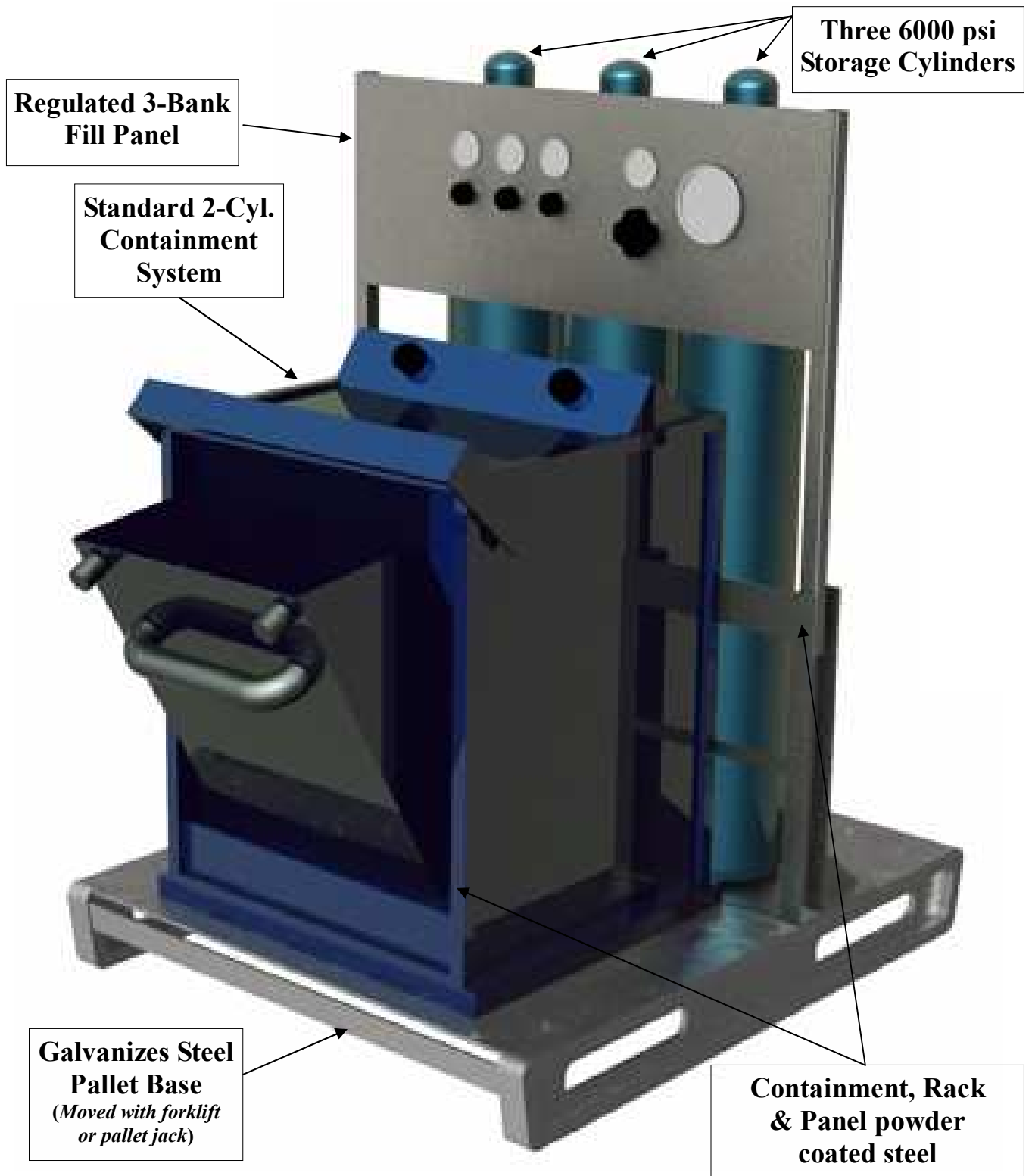


**4940 Ocean Terrace, Marathon, FL. 33050**

Voice: 305-743-6188 Fax: 305-743-7499

Email: [aesinternational@hotmail.com](mailto:aesinternational@hotmail.com)

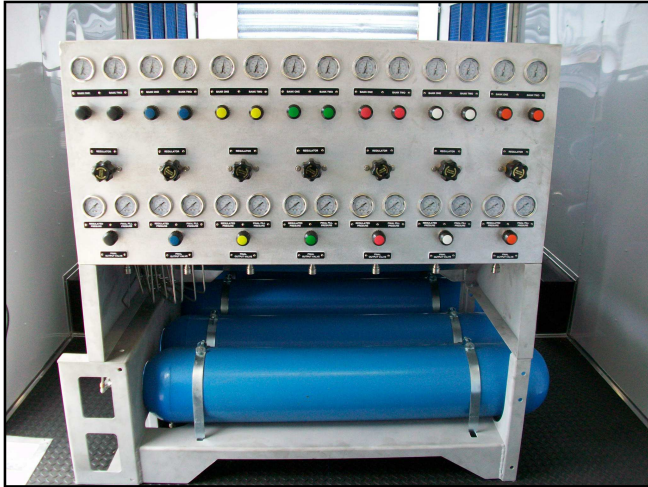
Standard 2-Cyl. Containment System, Integrated w/custom 3-Cyl. Rack & Regulated 3-Bank Fill Panel (2-SCBA Cly. Filling Module) Forklift or Pallet Jack Movable. Includes 3-6000 psi Cylinders, all Connection



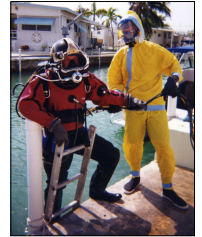
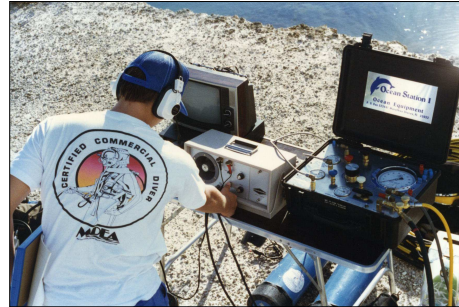




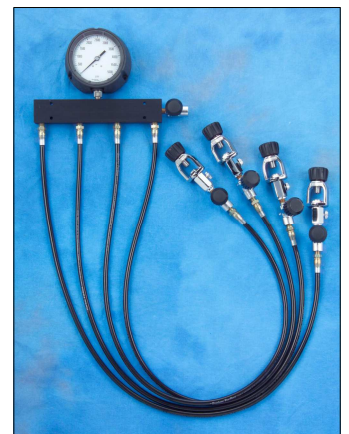
# Breathing Air Delivery Equipment & Cylinder Filling Systems



## Catalyst Services and Hazmat Breathing Air Delivery Systems



## Aviation Oxygen Service Ground Support Equipment



## Fixed Based and Portable Cylinder Filling Panels and Equipment



# OXYGEN SERVICE EQUIPMENT



## AIRCRAFT MOBILE GROUND SUPPORT Oxygen Service Fill station



## PORTABLE O2 FILL STATION

**Precisely Mix Gas Anywhere**

**\*Nitrox \*Trimix \*Heliox**

**Fill 100% Oxygen Cylinders Anywhere**



## ULTRA PORTABLE GAS BLENDER

**Precisely Mix Gas Anywhere**

**\*Nitrox \*Trimix \*Heliox**

**Fill 100% Oxygen Cylinders Anywhere**

## BASIC AVIATION OXYGEN TRANSFILLER

**Fill 100% Oxygen Cylinders Anywhere**

**\*Medical \*Portable Pilot \*Aircraft Installed**



### HOME OFFICE:

4940 Ocean Terrace, Marathon Florida 33050 USA \* Voice: 305-743-6188 Fax: 305-743-7499

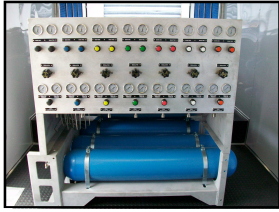
Web Site: [www.mdeainternational.com](http://www.mdeainternational.com) Email: [aesinternational@hotmail.com](mailto:aesinternational@hotmail.com)







# High Pressure Storage Cylinders



## ASME CYLINDERS *No Re-Testing Required*

Stock Number	Working PSI	Capacity CuFt	Length	Diameter	Weight Lbs
8BA711	7000 PSI	537	54	9.78	400



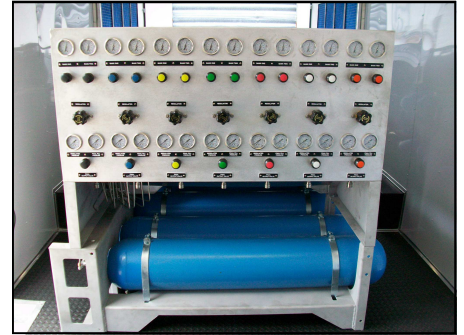
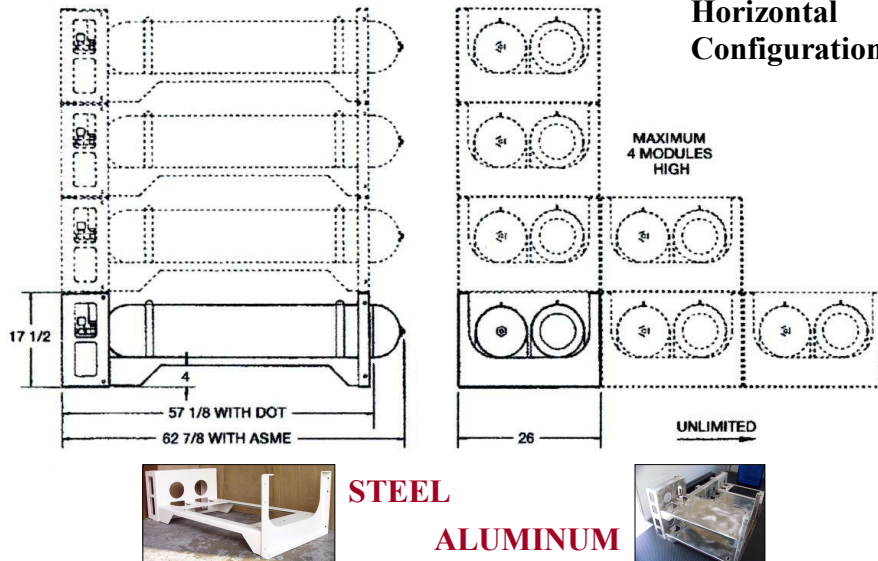
## DOT CYLINDERS *Retest every **TEN** Years*

Stock Number	Working PSI	Capacity CuFt	Length	Diameter	Weight Lbs
8BC250	2265 PSI	236	51"	9.28"	115
8HP501C	4500 PSI	436	51"	9.41"	155
8HP590C	5000 PSI	523	57"	9.41"	184
8HP586C	6000 PSI	510	52"	9.41"	195

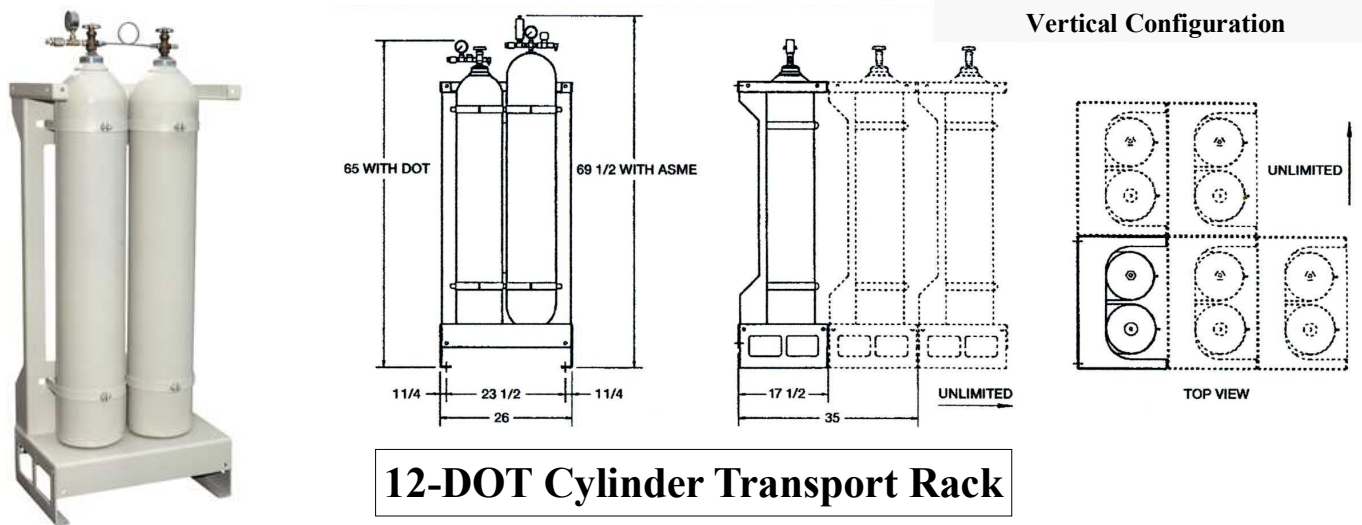


**MADE IN U.S.A.**  
**By Proud Americans**

## Modular DOT or ASME Cylinder Rack System



## Vertical Configuration



Our 12 pack transport/storage rack securely holds cylinders in the up right position for travel or storage. It is designed to be moved with a forklift or pallet jack. It is also equipped with four lifting eyes for vertical lifting with crane, hoist or overhead lift. The pinned front gate removes fast and easy for cylinder handling. It is also equipped with a 2 in ratchet strap to keep cylinder movement to a minimum. The rack is constructed from heavy gauge steel and is black powder coated. Other colors are available upon request.





# AirLife 7200 Tube Trailer



**72,000 Cubic Foot Capacity**  
**Extremely Small Footprint**  
**Towed with Standard HD Pickup**  
**Low Maintenance Costs**



Patent Protected 2015

## HOME OFFICE:

4940 Ocean Terrace, Marathon Florida 33050 USA \* Voice: 305-743-6188 Fax: 305-743-7499

Web Site: [www.mdeainternational.com](http://www.mdeainternational.com) Email: [mdea@mdeainternational.com](mailto:mdea@mdeainternational.com)



# AirLite 7200 Tube Trailer

## General Overview

The AirLite 7200 is a compressed gas transport tube trailer. It is designed to weigh as little as possible but carry an enormous amount of compressed gas. This design is far more efficient, cost effective and user friendly than traditional compressed gas hauling tube trailers.

## Unique Features of the AirLite 7200 versus Standard Tube Trailers

Most compressed gas transport tube trailers are around forty feet (40') long and must be towed with a semi tractor truck. The AirLite 7200 holds the same amount of compressed gas as a traditional tube trailer but can be pulled with a HD series standard pickup truck. The AirLite 7200 is also only fourteen feet (14') long and leaves a very small footprint.

This is primarily due to the use of type III composite cylinders instead of traditional steel cylinders. Our composite cylinders weigh almost nothing compared to their steel counterparts and yet hold as much or more compressed gas.

The AirLite's enclosed trailer design has many advantages over other designs. All the controls and cylinder access is made inside the trailer in a more controlled environment. Air quality testing is accomplished with our built in *Quick Test Port* for accurate, fast and easy air testing. Refilling and discharge is also done inside the AirLite's cabin.

Most cylinders have to be removed from the trailer and inspected every five (5) years. With our special cylinder permit we can retest the AirLite's cylinders in place. This will save thousands and thousands of dollars for AirLite owners every retest cycle. If a cylinder must be removed, our modular racking makes that possible without cutting apart the trailer or racking.

In most cases an AirLite trailer costs far less to purchase than a traditional tube trailer. Add in the savings at retest and the lower cost tow vehicle, the AirLite 7200 is an exceptional value over a traditional tube trailer.

- **Extremely small foot print (*physical size*) in relation to capacity\***
  - **Fraction of the total gross weight of traditional tube trailers with the same capacity\***
  - **Can be towed with a standard HD series pickup truck\***
  - **Can transport Air, Nitrogen, Helium and CNG**
  - **Tubes are class III aluminum carbon fiber wrapped cylinders**
  - **Only composite transport with special permit to retest cylinders without removal\***
  - **Cylinders housed in an enclosed trailer with operations cabin\***
  - **Controls (*fill, delivery and air testing*) accessed from inside the cabin\***
  - **Modular Cylinder racking allowing easy cylinder removal if necessary\***
  - **Cylinder racking hot dipped galvanized for maximum corrosion resistance\***
  - **Control panel with quick test port for accurate fast and easy air quality testing\***
  - **Has large ball valve with CGA 346 & 347 fittings for efficient discharge and refill**
- Patent Protected 2015**

### HOME OFFICE:

4940 Ocean Terrace, Marathon Florida 33050 USA \* Voice: 305-743-6188 Fax: 305-743-7499  
Web Site: [www.mdeainternational.com](http://www.mdeainternational.com) Email: [mdea@mdeainternational.com](mailto:mdea@mdeainternational.com)

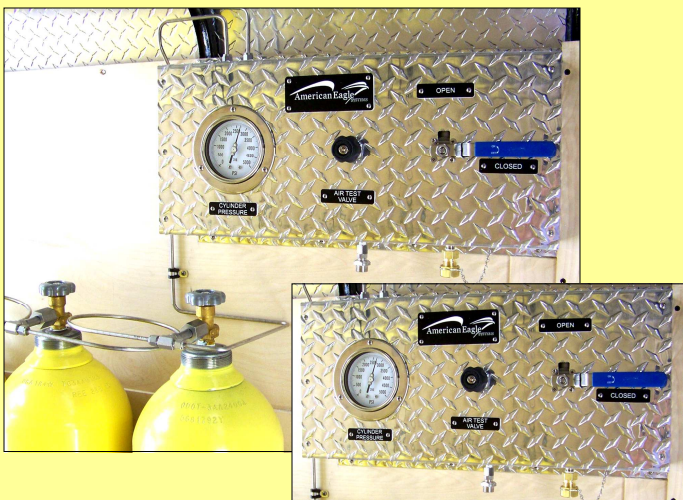




# Mobile Air Trailer 6200



**6,200 Cubic Foot Capacity**  
**Extremely Small Footprint**  
**Towed with Standard Pickup**  
**Low Maintenance Costs**



## HOME OFFICE:

4940 Ocean Terrace, Marathon Florida 33050 USA \* Voice: 305-743-6188 Fax: 305-743-7499

Web Site: [www.mdeainternational.com](http://www.mdeainternational.com) Email: [aesinternational@hotmail.com](mailto:aesinternational@hotmail.com)

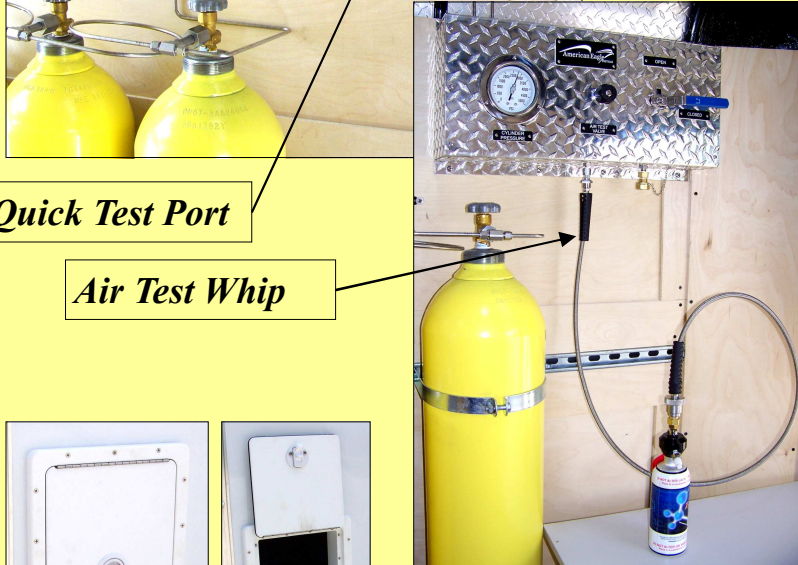


# Mobile Air Trailer *6200 Cabin*



**Large Master Control Gauge**

**High Flow Fill/Delivery Locking Ball Valve**



**Quick Test Port**

**Air Test Whip**



**Umbilical Hatch**



**12 Volt Interior Light**



**Spare Tire Mounted in Cabin**



## Basic Specifications

**Capacity Air:**  
6,200 SCF @ 70 Degrees

**Working Pressure:**  
2400 psi

**Trailer Dimensions:**  
12'L x 6'W x 6.5' H

**Commercial Duty Axles:**  
Two 3,500 lbs

**Tires:**  
205/175 D 15

**Gross Weight Empty:**  
4,840 lbs

**Gross Weight Full, Air:**  
5,340 lbs

**Cylinder Inspections:**  
Visual, yearly  
Retest, Every 10 years

### *Also Available*

<b>Mobil Air Trailer 8800</b>	<b>Mobil Air Trailer 10200</b>
8,800 SCF @ 70 Degrees	10,200 SCF @ 70 Degrees
12'L x 6'W x 6.5' H	12'L x 6'W x 6.5' H
Weight Empty: 5,000 lbs	Weight Empty: 5,860 lbs
Weight Full Air: 5,710	Weight Full Air: 6,683

### HOME OFFICE:

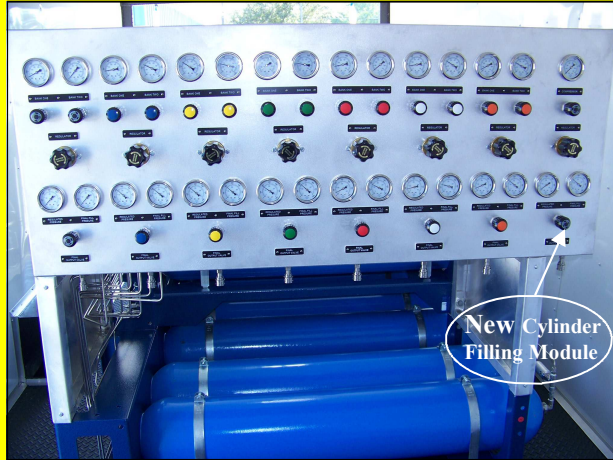
4940 Ocean Terrace, Marathon Florida 33050 USA \* Voice: 305-743-6188 Fax: 305-743-7499

Web Site: [www.mdeainternational.com](http://www.mdeainternational.com) Email: [aesinternational@hotmail.com](mailto:aesinternational@hotmail.com)





# MOBILE AIR DELIVERY SYSTEM I Version III



**20 x 8 1/2 foot  
Extreme Highway Use  
Trailer**



- \* 6 Station Life Support Delivery System**
- \* Back Up Life Support Module**
- \* External Cylinder Filling Module *New Future!***

- \* 14 AMSE Cylinders (7,518 cuft)**
- \* Z-180 Hyper filtration**



***New Future!***  
ALL AE 20 systems  
are now equipped  
with Lab on Locale  
"QUICK TEST"  
testing system

***New Future!***  
AE 20 with Integrated Lab on Locale  
"QUICK TEST" testing system



**AE 20 Fully Automatic Compressor *With Quick Change System***

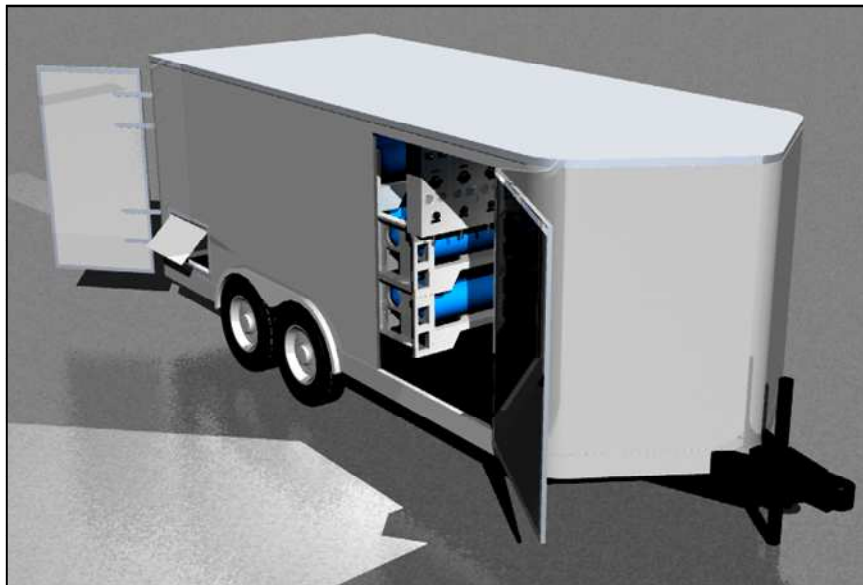


## HOME OFFICE:

4940 Ocean Terrace, Marathon Florida 33050 USA \* Voice: 305-743-6188 Fax: 305-743-7499  
Web Site: [www.mdeainternational.com](http://www.mdeainternational.com) Email: [aesinternational@hotmail.com](mailto:aesinternational@hotmail.com)



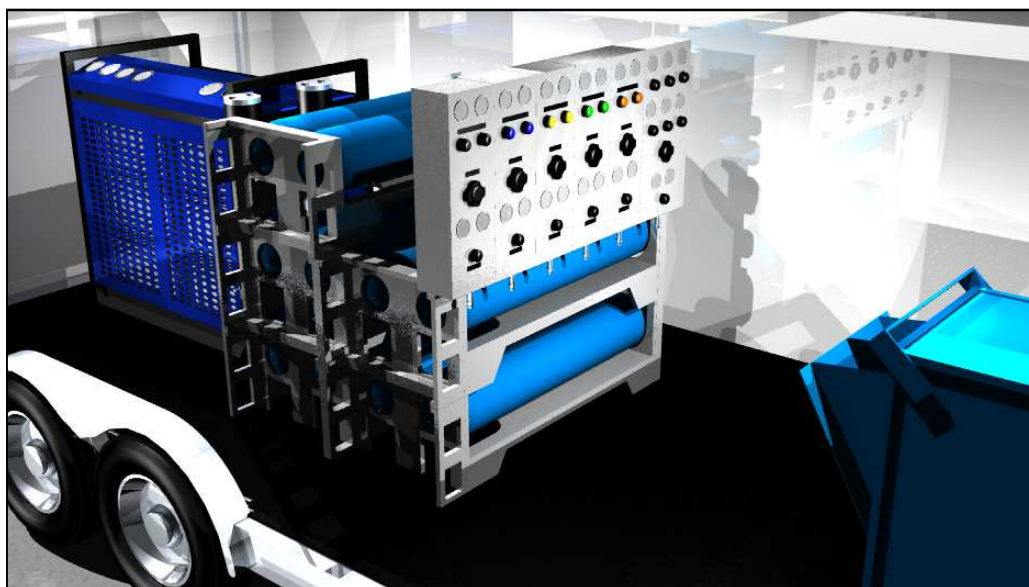




**18 x 8 1/2 foot  
Extreme  
Highway Use  
Trailer**



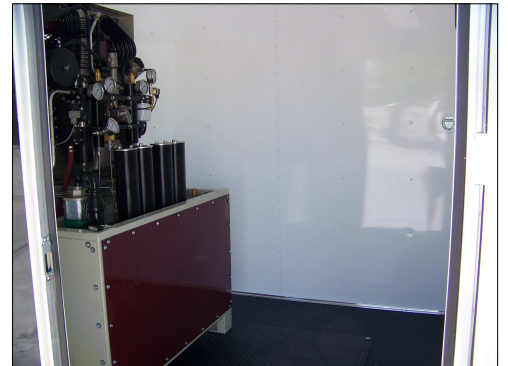
**4 Station Life  
Support  
Delivery  
System with  
Back Up**



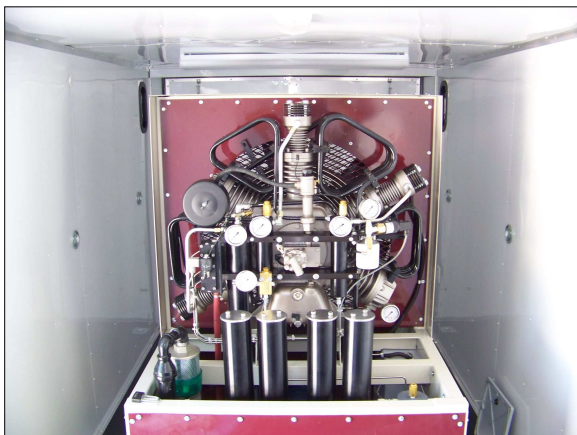
**6 Bank SCBA  
and K-Cylinder  
Fill Station**







**7" W x 14" L x 7" H  
Tandem Axle Trailer  
With  
AE-20V Vertical  
Compressor System**







# POD 20000

## Modular Air Delivery Pod



### POD - 20000

#### 20,000 cuft Cap. Stackable Pod.

*20,000 cuft breathing air storage/delivery pod*

8 ultra light 3600 psi carbon fiber wrapped aluminum cylinders.

Certified for over 20 different gases

\*Dimensions: 10'L x 6'W x 46'H

\*Two PRDs and one valve per cylinder

\*Steel internal framework

\*Forkliftable plus four lifting eyes.

\*Aluminum exterior panels

\*Isolated Bailout Cylinder

\*347/346 female delivery/fill fitting.

\*4 inch pressure monitor gauges.

*POD-10000 cuft version is also available. The POD-10000 is the same as the 20000 only with 4 cylinders giving the unit 10000 cuft of air.*



Copyright American Eagle Systems

#### HOME OFFICE:

4970 Ocean Terrace, Marathon Florida 33050 USA \* Voice: 305-743-6188 Fax: 305-743-7499

Email: [aesinternational@hotmail.com](mailto:aesinternational@hotmail.com)





# POD 20000 Modular Air Delivery Pod



The **POD II** panels and controls are easy to use with redundant in/out valves. **POD II** has a completely separate cylinder and outlet valves. This cylinder can be instantly brought on line with the other seven (7) cylinders at any time.



Patent Protected 2018

**POD version II** now uses *ISO Corner Castings*. These are the same corners that are used on all new ISO sea containers. These lifting/stacking corners are rated for 50,000 lbs.

This enables **POD 20000s** to be stacked much higher when using corner pins. Slinging and lifting are now a complete non issue.

## Basic Specifications

**Total Capacity, Air:**  
19,624 SCF @ 70 Degrees

**Primary Capacity, Air:**  
17,171 SCF @ 70 Degrees

**Reserve Capacity, Air:**  
2,453 SCF @ 70 Degrees

**Working Pressure:**  
3600 psi

**POD Dimensions:**  
10'L x 6'W x 46" H

**Gross Weight Empty:**  
3,666 lbs

**Gross Weight Full, Air:**  
5,050 lbs

**Cylinder Inspections:**  
Retest, Every 5 years



**POD II** also has extremely rugged and versatile fork pockets. Almost any size forks will fit these pockets.

## HOME OFFICE:

4940 Ocean Terrace, Marathon Florida 33050 USA \* Voice: 305-743-6188 Fax: 305-743-7499

Web Site: [www.mdeainternational.com](http://www.mdeainternational.com) Email: [aesinternational@hotmail.com](mailto:aesinternational@hotmail.com)

