



REGISTERED COMPANIES



PLACED STUDENTS

• MECH. CAD • CIVIL CAD • BIM CAD • ELEC. CAD • ACCOUNTING • GRAPHICS • DIGITAL MARKETING



WELCOME TO ELECTRICAL CAD SOFTWARE TRAINING & PLACEMENTS



REGISTERED COMPANIES



PLACED STUDENTS

Managing Director

Varada Uday Bhaskar

ME Mechanical Engg. OU University

16+ Years of Exp

Ex-Employee of (Majorly worked with)

Cyient, Tech Mahindra, Quest Global & Caterpillar -Rail



Click our website for Software Course Programs

<https://caddeskbangalore-bommanhalli.com/>



Click our website for Placed students & Partners

<https://cadenggr.com/placement-services>





REGISTERED COMPANIES



PLACED STUDENTS

• MECH. CAD • CIVIL CAD • BIM CAD • ELEC. CAD • ACCOUNTING • GRAPHICS • DIGITAL MARKETING

Sincere thanks to all the respective Parents, Dedicated Faculty & Team Members. Appreciate Students Joining our centre from various places (Many districts of Karnataka, AP, Tamilnadu, Kerala, Westbengal, Bihar, Orissa, Arunachal Pradesh and other locations with the trust you have in our TRAINING & PLACEMENT process

Special thanks to the 125+ registered Organizations for recruiting our CAD/IT students from various domains and maintaing healthy longterm relationship

**PRIDE MOMENT
ACHIEVED ANOTHER MILE STONE**
450+ Organizations - Final Interviews
125+ Registered Companies
150+ Placed Students



REGISTERED COMPANIES



PLACED STUDENTS



Placement Partner

BHASKARS ENGINEERING DESIGN & IT CENTER

<https://cadenggr.com/placement-services>

+91 - 80500 91122 80500 41122



REGISTERED COMPANIES

PLACED STUDENTS

• MECH. CAD • CIVIL CAD • BIM CAD • ELEC. CAD • ACCOUNTING • GRAPHICS • DIGITAL MARKETING

CONTENT

Page 4	About us & the softwares we teach
Page 5	Proessional Diploma in Electrical CAD Courses
Page 6	Content of the Electrical CAD Courses
Page 7	Our Powerful Placement Strategy
Page 8 to 12	Sample Electrical projects of our CAD Students
Page 13 & 14	Technically Important Things for Interview & Career
Page 15	Course Fees & Structure (2 course & 3 Courses)
Page 16 & 17	Overview of our Placement Parnters
Page 18 to 20	Our Placed Students
Page 21	Glimpse of our Placement Thumb Sign rule
Page 22 & 23	Glimpse of our Skill Training Sessions
Page 24	Guest Visit to our center (Directors / CEO / VP /etc)
Page 25	Glimpse of our Social Service Events
Page 26 & 27	Awards, Events & Celebrations
Page 28	Best Training Quality Award
Page 29	Placement Category Course Program
Page 30	Sample Certification
Page 31	Join & Refer for a bright career
Page 32	Important Question & Answers for Career
Page 33	Job Selection Criteria in Organizations
Page 34	Time for Registration and Contact



125⁺
REGISTERED COMPANIES



150⁺
PLACED STUDENTS

• MECH. CAD • CIVIL CAD • BIM CAD • ELEC. CAD • ACCOUNTING • GRAPHICS • DIGITAL MARKETING

We **Bhaskars Engineering Design & IT Center** in collaboration with **software Training Partner CADDESK/ITDesk** which is one the leading software training Institute in India - located in **Bommanhalli & Madiwala** Bangalore are providing Software Training & Job Placement.

We teach wide variety of Software's for Engineering & Degree Students
CIVIL/ARCH./INTERIOR/MECH./PRODUCTION/AUTOMOBILE/ELECTRICAL/PUC/DEGREE (B.com/BBA/BA/BSC/BCA/others)/ PG/MASTERS

We aim to strengthen the students in the society, to help them reach their goals by providing **Skill Development**- Software Skills + Communication Skills + Domain Skills & Guaranteed Placement which long-last for their Career.



CIVIL ENGINEERING SOFTWARES

- Auto CAD
- 3DS Max
- REVIT Structure
- REVIT Architecture
- REVIT MEP
- STAAD Pro
- Etabs
- V-Ray
- Google Sketch up
- Enscape
- Quantity Take off
- and others.

MECH.ENGINEERING SOFTWARES

- Auto CAD
- SolidWorks
- Catia
- NX Cad
- Nx Cam
- CREO
- Ansys WB
- REVIT MEP
- INVENTOR
- GD & T
- and others.

ELECTRICAL ENGG. SOFTWARES

- Auto CAD Elec.
- PLC/Scada
- Matlab
- E-Plan
- Primavera
- Revit MEP
- And others.

IT ENGINEERING SOFTWARES

- MS Office
- Photoshop
- Corel Draw
- C language
- C++
- Core Java
- Advance Java
- Python
- Tally
- PHP
- .Net
- AWS
- SAP FICO/MM
- HTML
- JQuery
- My SQL &
- Digital Marketing

Placement Partner

BHASKARS ENGINEERING DESIGN & IT CENTER

<https://cadenggr.com/placement-services>

+91 - 80500 91122 80500 41122



REGISTERED COMPANIES



PLACED STUDENTS

• MECH. CAD • CIVIL CAD • BIM CAD • ELEC. CAD • ACCOUNTING • GRAPHICS • DIGITAL MARKETING

PROFESSIONAL DIPLOMA IN ELECTRICAL CAD COURSES

AutoCAD Electrical:



AutoCAD Electrical is a specialized toolset within the AutoCAD software suite, designed for creating and modifying electrical control systems.

It includes features like automated wire numbering, circuit building, and report generation, boosting productivity for control engineering tasks. This toolset helps professionals create, modify, and document electrical control systems efficiently, using an industry-specific toolset for electrical design.

Revit MEP:



Revit MEP is a specialized version of the Autodesk Revit software, focused on modeling Mechanical, Electrical, and Plumbing (MEP) systems within a building information modeling (BIM) environment. It allows users to create

3D models of MEP systems including ductwork, piping, electrical conduits, and equipment. coordinate them with other architectural & structural models. Revit MEP is used by electrical engineers to design and document electrical systems in buildings. It allows for integrated design, analysis, and documentation of electrical components, circuits, and equipment.

E-Plan Electric:



Eplan Electric is a software solution specifically designed for electrical engineers to plan and design electrical systems. It's used for creating schematics, managing projects, and generating documentation, streamlining the electrical engineering process.

Eplan Electric automates repetitive tasks and uses standardized templates, leading to faster design processes and reduced errors.



REGISTERED COMPANIES



PLACED STUDENTS

• MECH. CAD • CIVIL CAD • BIM CAD • ELEC. CAD • ACCOUNTING • GRAPHICS • DIGITAL MARKETING

CONTENT (AutoCAD Electrical, Revit MEP & E-Plan)

AutoCAD Electrical

- Student will be starting from the Basics of AutoCAD 2d for 3-4 sessions, since the knowledge and commands of basic AutoCAD are important.
- Student will be able to prepare wide variety of 2d drawings
- Circuit drawings
- Wiring drawings
- Schematic drawings
- Panel drawings
- Plc Drawings
- Ladders
- Creation and use of Existing Electrical symbols - Connectors, terminals, transformers, resistors, diodes & rectifiers.
- Student will also understand creation of drawing templates,
- Project management, editing tools, legend creation
- Identification of drawing errors
- Report generation etc.

REVIT MEP

- Student will be starting from the Basics of Revit Arch. for 3-4 sessions.
- In Revit Arch basics student will learn how to create the walls, partitions, slab, Roof, Doors, Windows & Project Units.
- Revit MEP is Building Information Modeling software where a student can learn Mechanical, Electrical & Plumbing.
- Student will gain the Knowledge of HVAC (Heating, Ventilation & Air Conditioning)
- Plumbing & Piping design
- Electrical layout
- Editing tools
- Family Creation, Spaces & Zones.
- Creation of Power Circuits
- Creating Switch Systems
- Cable tray, Electrical components/ Equipment's
- Electrical devices etc.
- Fire fighting

E-Plan Electric

- E-Plan is a higher end software in a broader range provides service solutions in the fields of Electrical, Automation & Mechatronic engineering.
- E-Plan is one of world's leading design software solutions for Machine, Plant, Automobiles & Panel Builders.
- E -Plan helps in avoiding errors and increase productivity. Student will be learning:
- E-Plan Data Portal
- Graphical Editor tools
- Panel drawings
- Creating schematics
- Creating project
- Editing tools & Identification of Devices
- Report generation &
- Project management etc.



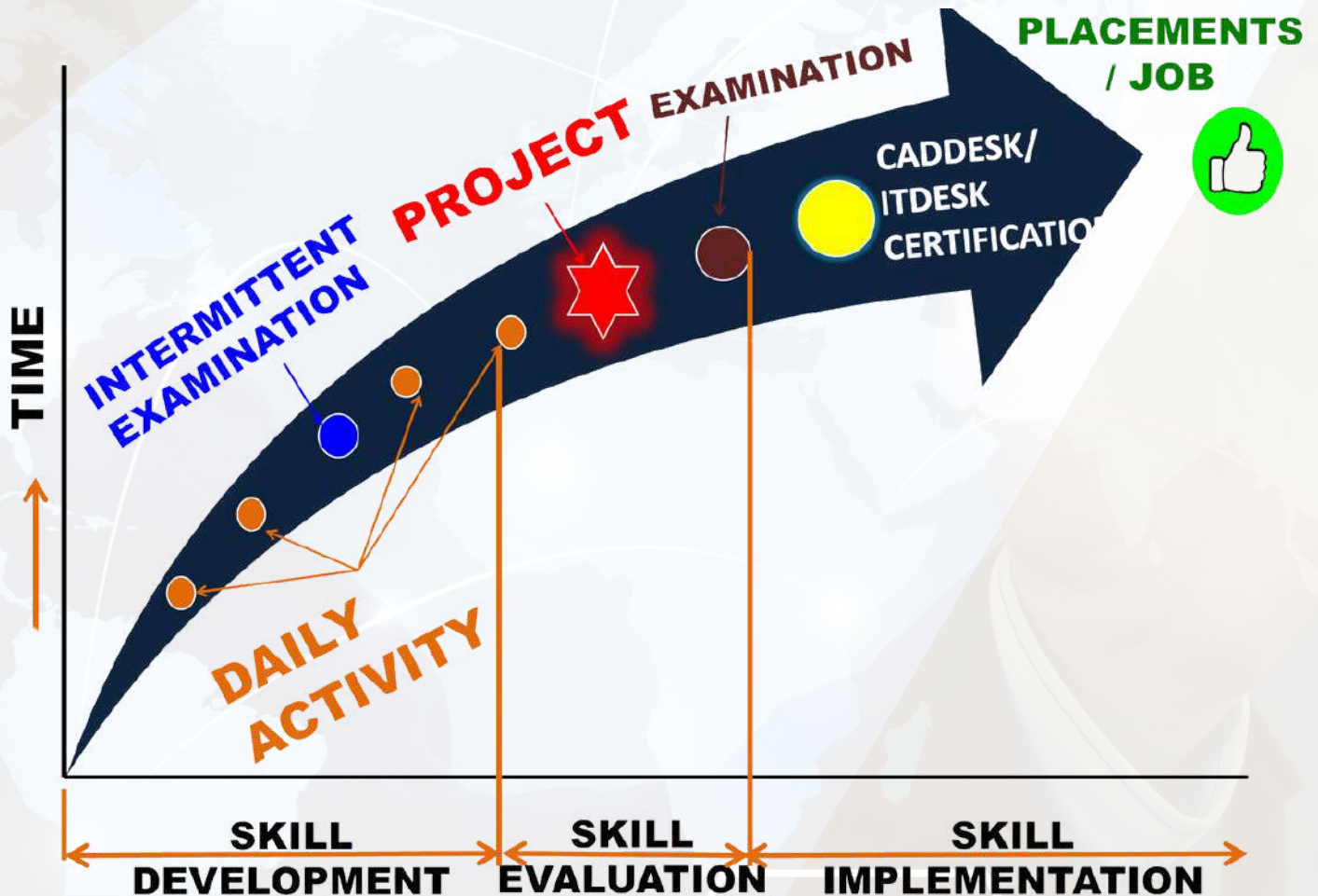
REGISTERED COMPANIES



PLACED STUDENTS

• MECH. CAD • CIVIL CAD • BIM CAD • ELEC. CAD • ACCOUNTING • GRAPHICS • DIGITAL MARKETING

OUR POWERFUL PLACEMENT STRATEGY



- 100+ ACTIVITIES ON VARIOUS SOFTWARES
- AMPLE AMOUNT OF PRACTICE TIME
- CAD & IT - SPEED UP EXAMINATION
- CREATIVE & INNOVATIVE PROJECTS
- TECHNICAL & PRACTICAL SESSIONS
- CAREER AWARENESS SESSIONS
- COMPLETE & CLEAR RESUME
- MULTIPLE INTERVIEW OPPORTUNITIES

Placement Partner



BHASKARS ENGINEERING DESIGN & IT CENTER

<https://cadenggrr.com/placement-services>



+91 - 80500 91122 80500 41122



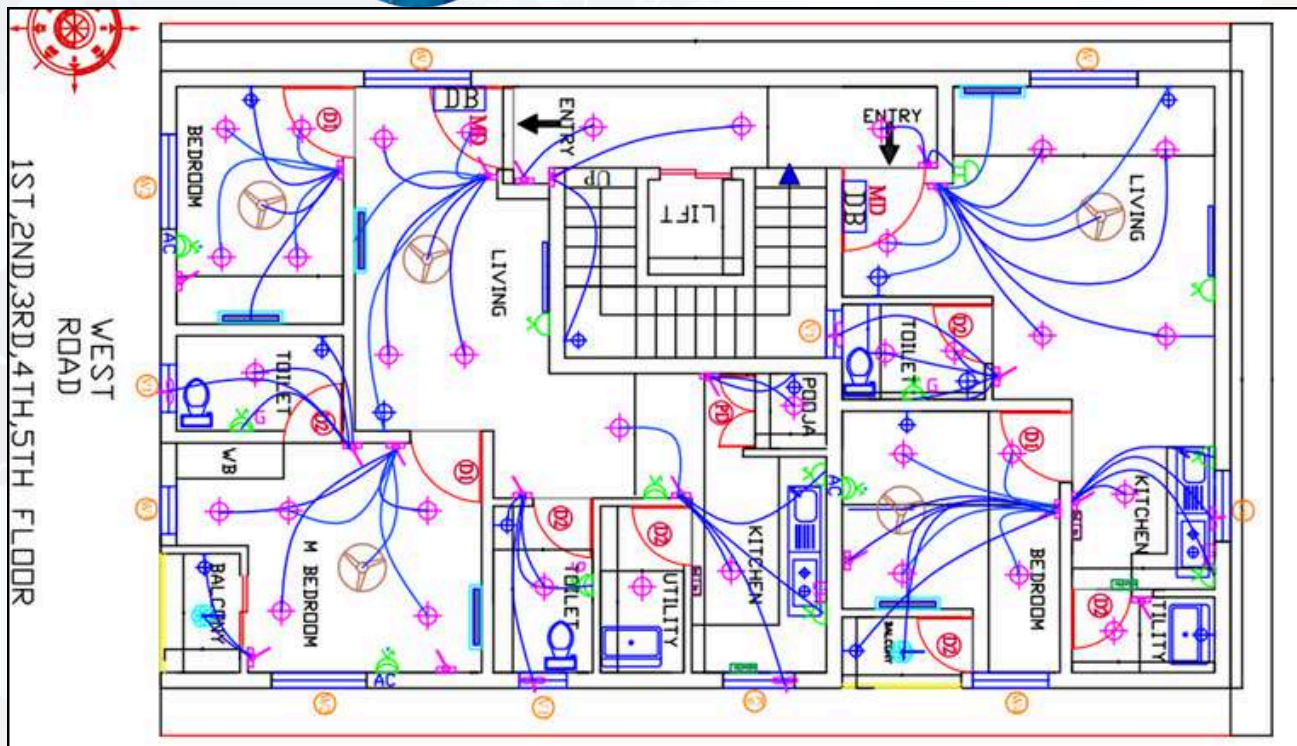
REGISTERED COMPANIES

PLACED STUDENTS

• MECH. CAD • CIVIL CAD • BIM CAD • ELEC. CAD • ACCOUNTING • GRAPHICS • DIGITAL MARKETING

SAMPLE ELECTRICAL PROJECTS OF OUR STUDENTS

Created by: Karthick
ID: 8419 / 225
Building Electrification



	ELECTRICAL LEGEND	QTY	WATTS	TOTAL W
	SWITCH BOARD AT 1050 MM FROM FFL	18	-	-
	CEILING LIGHT 20W	33	20 w	20 w
	WALL BRACKET LIGHT AT 2100 MM FROM FFL	13	9W	9W
	BELL AT 2400 FROM FFL	2	-	-
	2/3 PIN 6A SWITCHED SOCKET OUTLET AT 300 MM FROM FFL	3	60W	60W
	3 PIN 6/16A SWITCHED SOCKET OUTLET AT 2100 MM FROM FFL FOR AC	3	200W	3000W
	3 PIN 6/16A SWITCHED SOCKET OUTLET AT 300 MM FROM FFL	2	200W	200W
	3 PIN 6/16A SWITCHED SOCKET OUTLET AT 1800 MM FROM FFL FOR GEYSER	3	200W	2000W
	3 PIN 25A SWITCHED SOCKET OUTLET FOR AC AT 300 MM FROM FFL	1	-	-
	2/3 PIN 6A SWITCH SOCKET OUTLET FOR CHIMNEY	2	60W	60W
	EXHAUST FAN AS PER WINDOW DETAIL	5	40W	40W
	CEILING FAN	5	80W	80W
	4 Switch and 1 Socket 5A	-	-	-
	2 Switch and 1 Socket 16A REFEIGERATOR	2	800W	800W
	2 SWITCH 2 SCOKET 16A	2	-	-
	Hanging light	2	-	-
	Tube light	2	20W	20W
	THIS IS ONE FLOOR READING 1ST TO 5TH (18471)*5 = 73668 W			18417 W



REGISTERED COMPANIES

PLACED STUDENTS

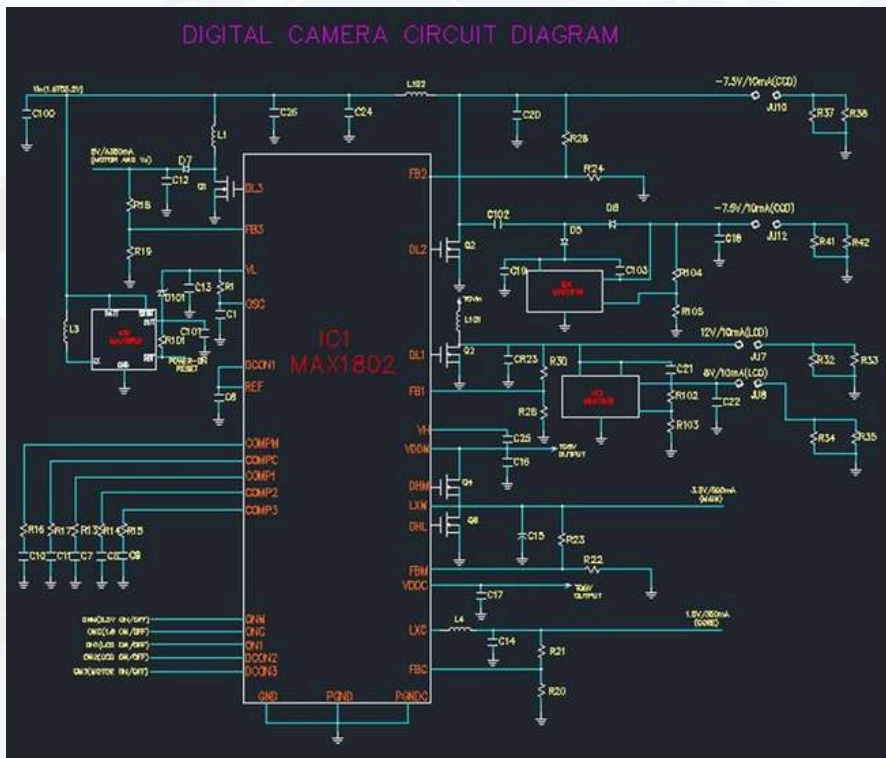
• MECH. CAD • CIVIL CAD • BIM CAD • ELEC. CAD • ACCOUNTING • GRAPHICS • DIGITAL MARKETING

SAMPLE ELECTRICAL PROJECTS OF OUR STUDENTS

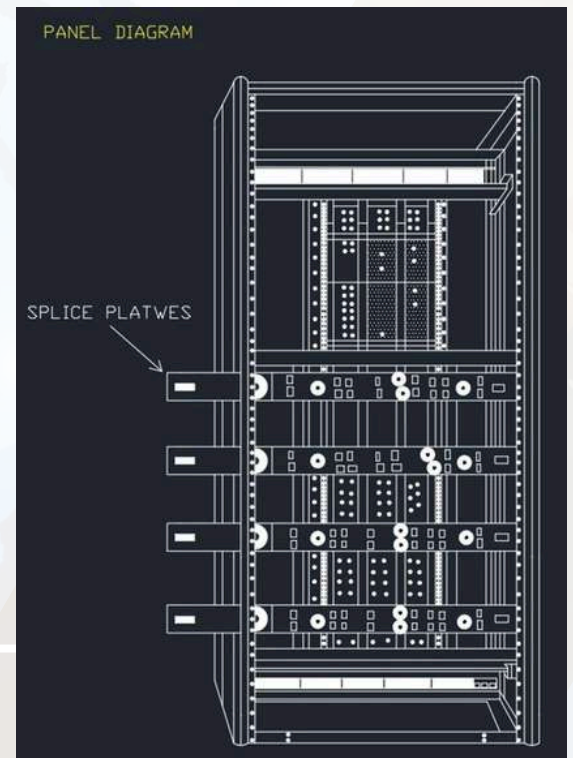
Created by: N Lokesh
ID: 8419 / 142
Various Electrification
Drawings & HVAC lines



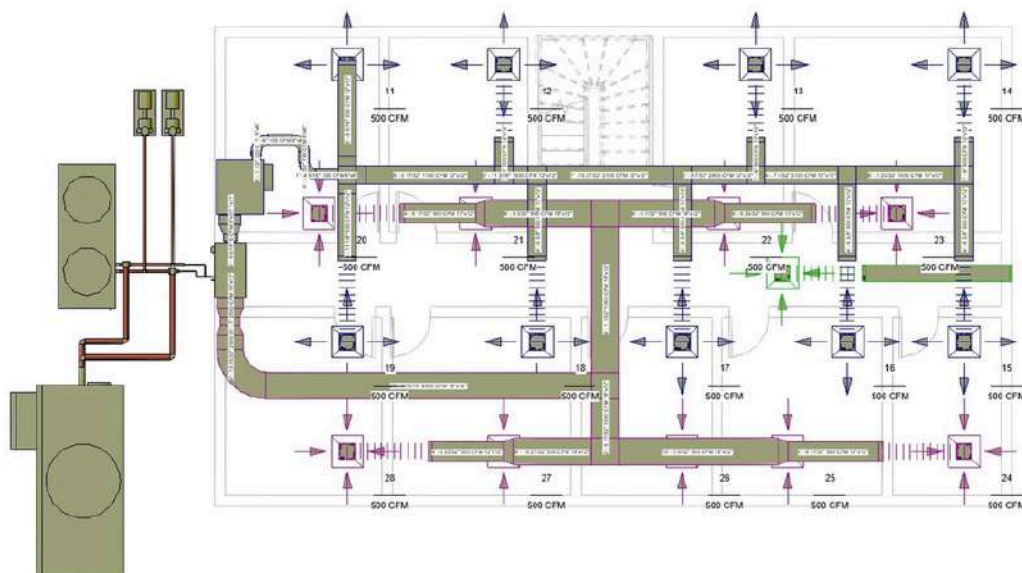
CIRCUIT DIAGRAM



CONTROL PANEL



HVAC - COLLING TOWERS & CHILLERS





REGISTERED COMPANIES

PLACED STUDENTS

• MECH. CAD • CIVIL CAD • BIM CAD • ELEC. CAD • ACCOUNTING • GRAPHICS • DIGITAL MARKETING

SAMPLE ELECTRICAL PROJECTS OF OUR STUDENTS

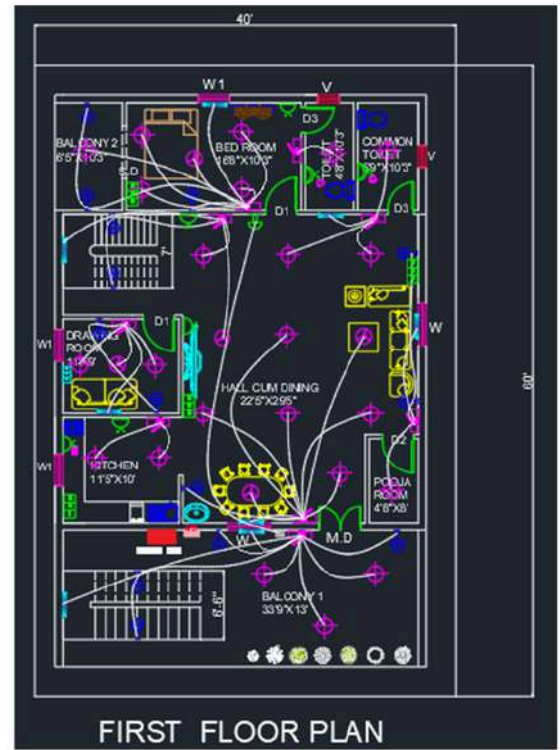
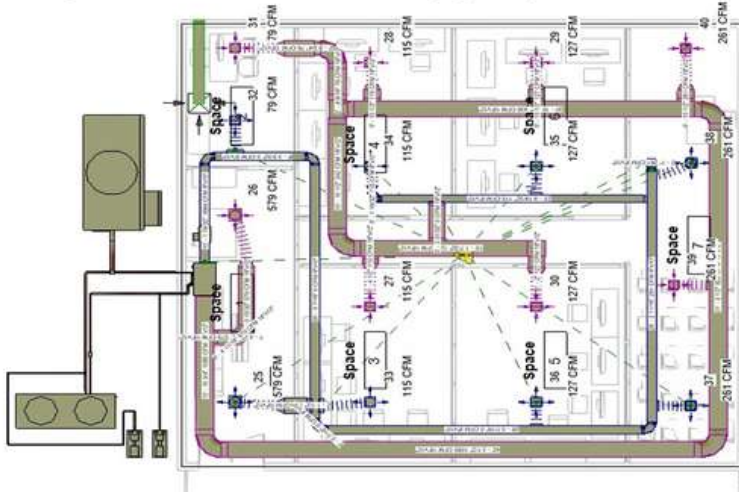
Created by: Annangi Charan

ID: 8419 / 154

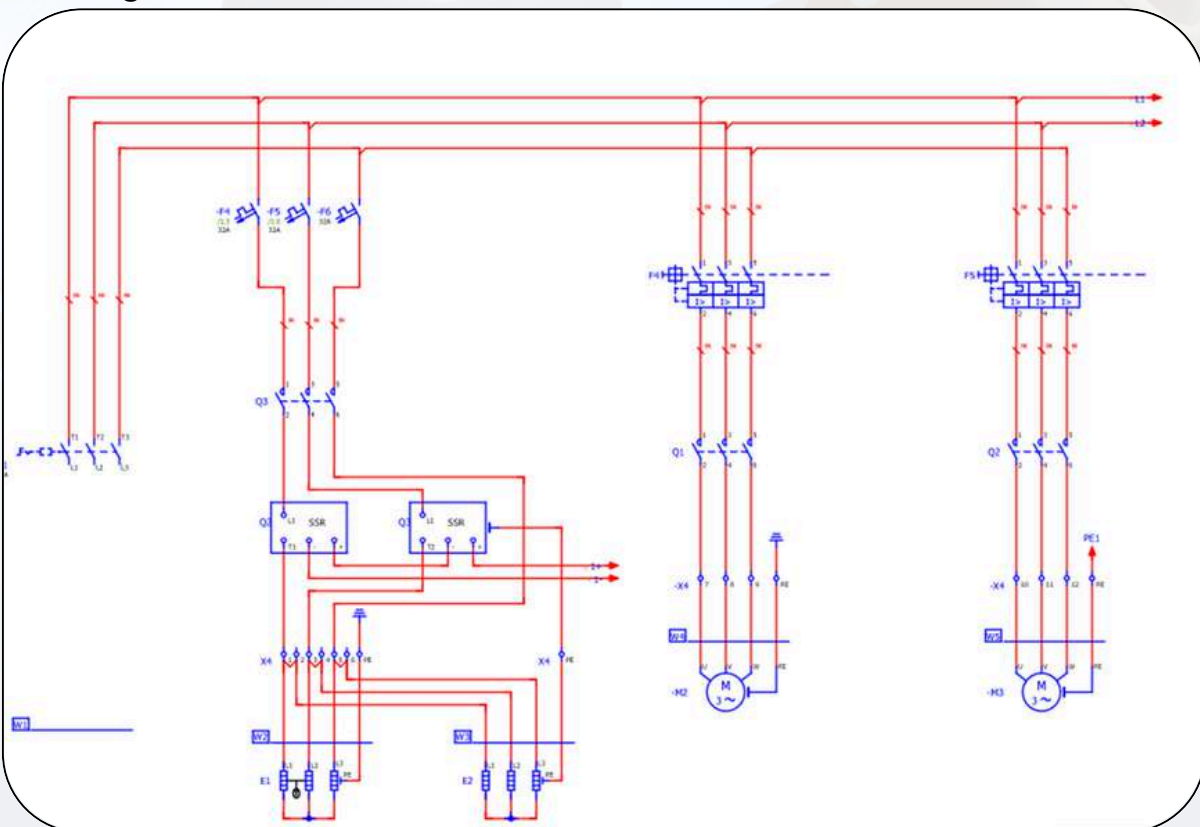
**Various Electrification
 Drawings & HVAC lines**



(Heating , Ventilation , Air Conditioning System)



Schematic Diagram in E-Plan





REGISTERED COMPANIES



PLACED STUDENTS

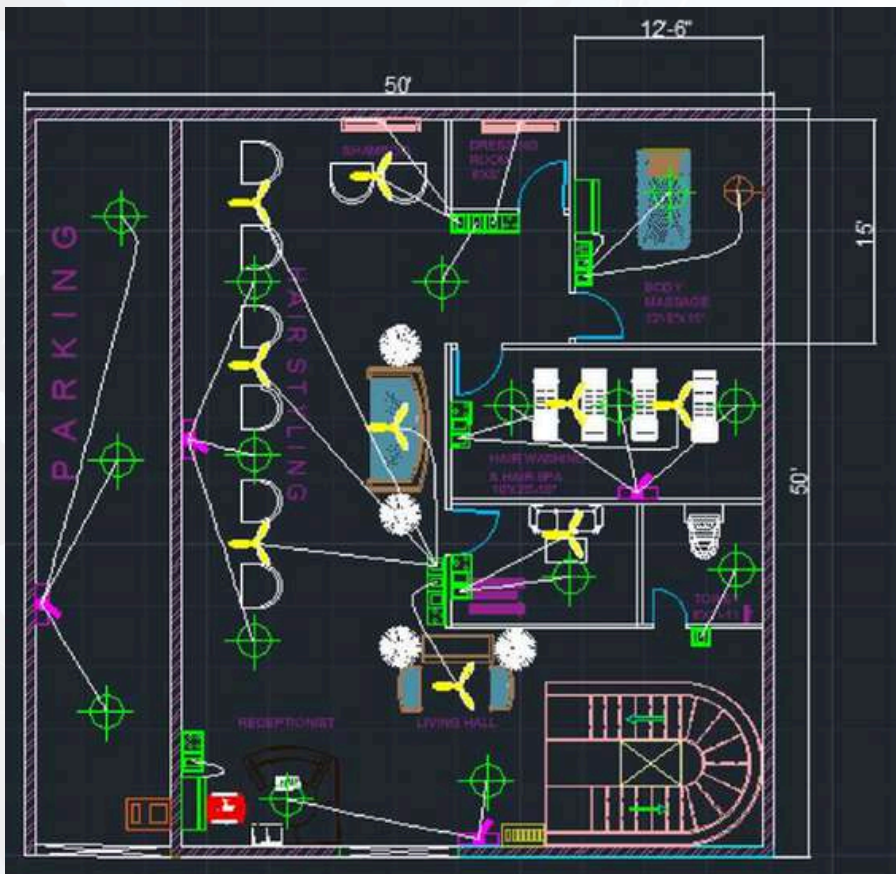
• MECH. CAD • CIVIL CAD • BIM CAD • ELEC. CAD • ACCOUNTING • GRAPHICS • DIGITAL MARKETING

SAMPLE ELECTRICAL PROJECTS OF OUR STUDENTS

Created by: J Vamsi

ID: 8419 / 265

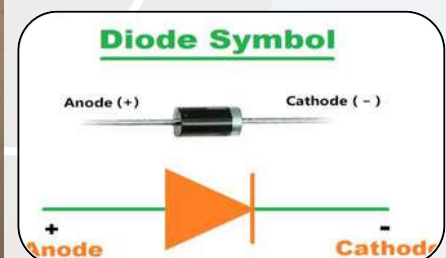
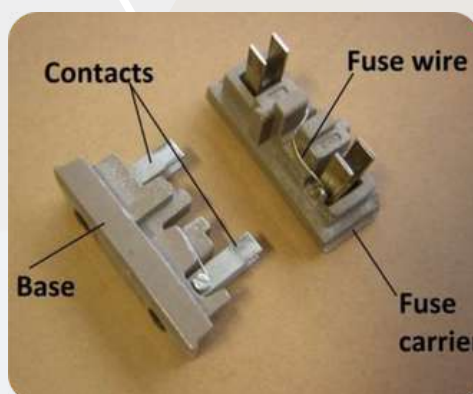
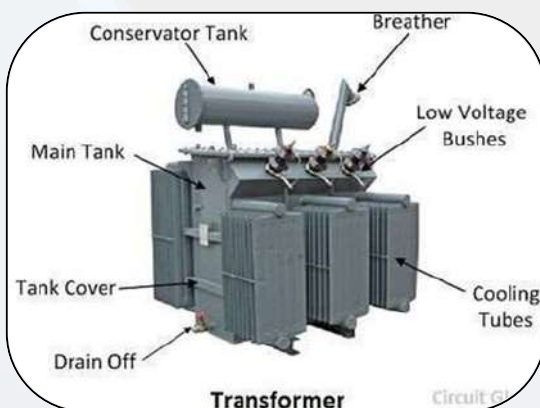
Various Electrification Drawings



PROJECT LIST

NAME OF THE	QUANTITY	HEIGHT
SWITCH BOARD	Q	1.4
CEILING FAN	29	10
2 SWITCH AND 1 SOCKET 18A	3	1.4
2 SWITCH AND 1 SOCKET BA	8	
1 SWITCH AND 1 SOCKET 18 A	3	1.4
3 SWITCH AND 1 SOCKET BA	6	1.4
AIR CONDITIONER	6	2.5
WALL LIGHT	3	4.5
TUBE LIGHT		4.5
CEILING LIGHT	38	9
		1.7
METER BOX	1	1.7

PPT OF VARIOUS ELECTRICAL ELEMENTS





REGISTERED COMPANIES



PLACED STUDENTS

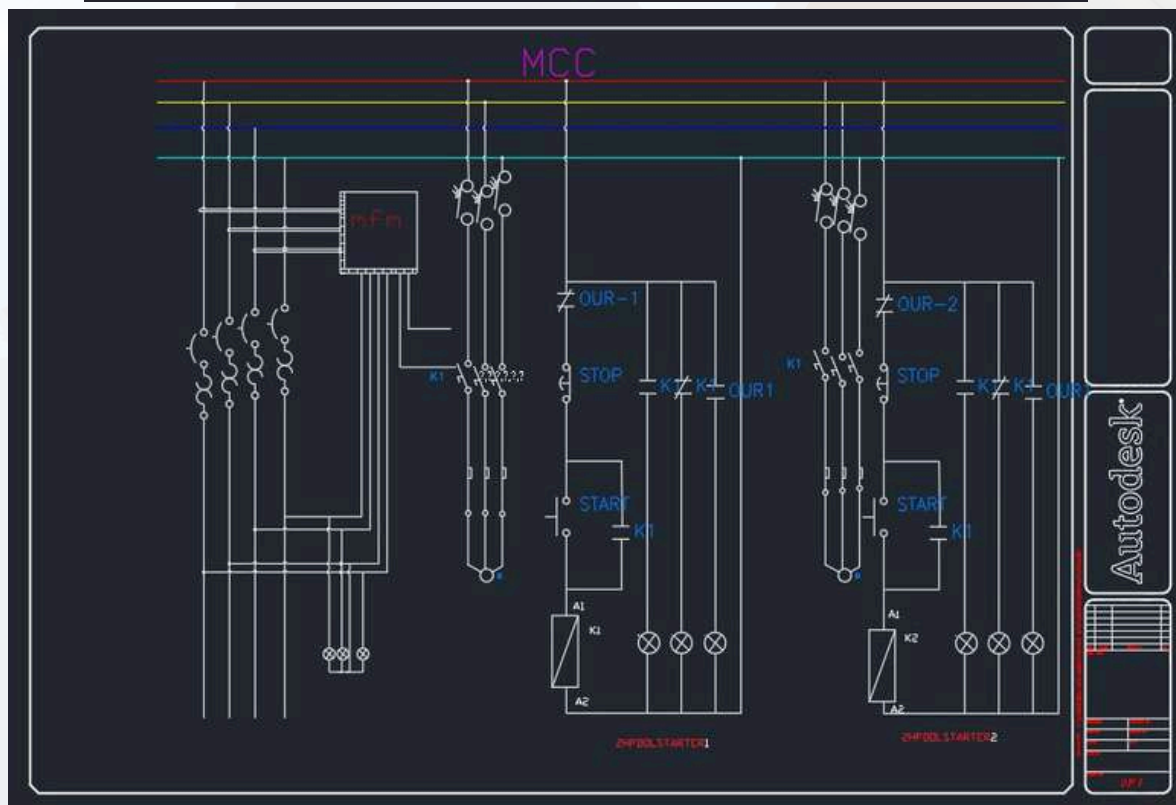
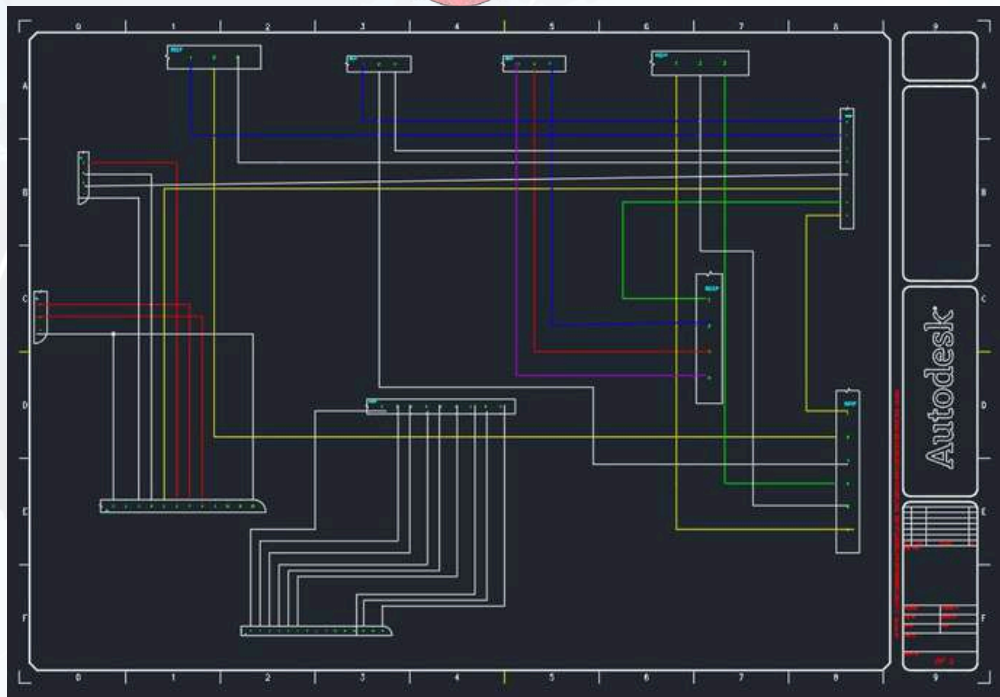
• MECH. CAD • CIVIL CAD • BIM CAD • ELEC. CAD • ACCOUNTING • GRAPHICS • DIGITAL MARKETING

SAMPLE ELECTRICAL PROJECTS OF OUR STUDENTS

Created by: Shakthi k

ID: 8418 / 95

Various Electrification Drawings





REGISTERED COMPANIES

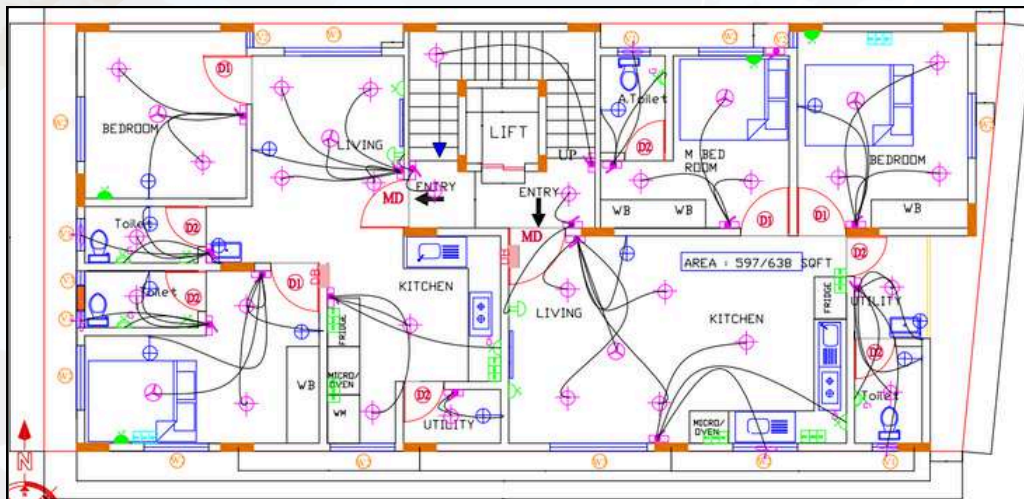
PLACED STUDENTS

• MECH. CAD • CIVIL CAD • BIM CAD • ELEC. CAD • ACCOUNTING • GRAPHICS • DIGITAL MARKETING

TECHNICALLY IMPORTANT THINGS FOR INTERVIEW & CAREER

- Building Electrification
- Load Calculation table
- Railway Electrification
- Other Practical Drawings

Understanding of Real time drawings on Building Electrification & Electrical Legend



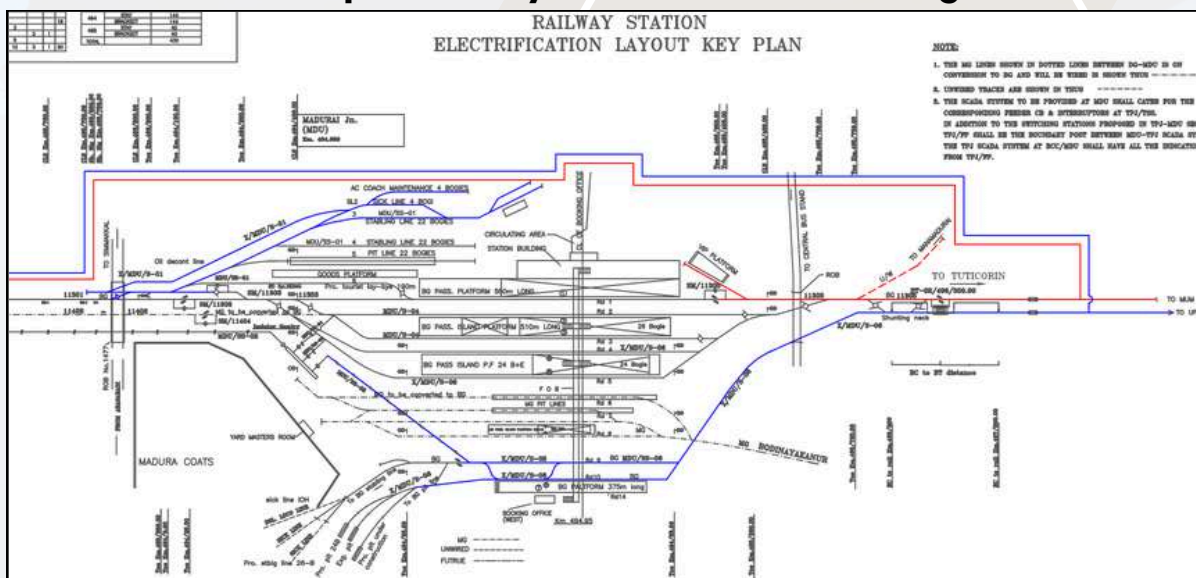
ELECTRICAL LEGEND	
	SWITCH BOARD AT 1050 MM FROM FFL
	BELL PUSH BUTTON AT 1050 MM FROM FFL
	CEILING LIGHT
	WALL BRACKET LIGHT AT 2100 MM FROM FFL
	BELL AT 2400 FROM FFL
	2/3 PIN 6A SWITCH SOCKET OUTLET AT 300 MM FROM FFL
	3 PIN 6/16A SWITCH SOCKET OUTLET AT 300 MM FROM FFL
	3 PIN 6/16A SWITCH SOCKET OUTLET AT 1800 MM FROM FFL GEYSER
	3 PIN 25A SWITCH SOCKET OUTLET AT 300 MM FROM FFL GEYSER
	2/3 PIN 6A SWITCH SOCKET OUTLET AT 300 MM FOR CHIMNEY
	EXHAUST FAN AS PER WINDOW DETAIL
	CEILING FAN
	TAPE LIGHT
	2 SWITCH AND 1 SOCKET 6A
	1 SWITCH AND 1 SOCKET 6A
	1 SWITCH AND 1 SOCKET 16 A

Sample Load Calculation Table

LOAD CALCULATION TABLE- GROUND FLOOR				
S.NO	DEVICE DESCRIPTION	LOAD CAPACITY (w)	QTY	TOTAL LOAD REQUIRED(W)
1	CEILING LIGHT	20 WATT	22	440 W
2	SWITCH BOARD AT 1050 MM FROM FFL		6	
3	WALL BRACKET LIGHT AT 2100 MM FROM FFL	15 WATT	8	120 W
4	2/3 PIN 6A SWITCH SOCKET OUTLET AT 300 MM FROM FFL		3	
5	3 PIN 6/16A SWITCH SOCKET OUTLET AT 300 MM FROM FFL			
6	3 PIN 6/16A SWITCH SOCKET OUTLET AT 1800 MM FROM FFL GEYSER	2000W	1	2000 W
7	2/3 PIN 6A SWITCH SOCKET OUTLET FOR CHIMNEY	6 (A)	1	
8	EXHAUST FAN AS PER FOR DETAIL	50 W	2	100 W
9	CEILING FAN	60/70W	3	
10	2 SWITCH AND 1 SOCKET 5A	5(A)	3	
11	1 SWITCH 1 SOCKET 5 A	5(A)		
12	1 SWITCH 1 SOCKET 15 A	15(A)	2	
13	WELCOME LIGHT			
14	BELL AT 2400 MM FROM FFL			
15	3 PIN 6/16A SWITCH SOCKET OUTLET AT 1800 MM FROM FFL AC	200 W	2	200 W

LOAD CALCULATION TABLE FIRST & SECOND FLOOR				
S.NO	DEVICE DESCRIPTION	LOAD CAPACITY (w)	QTY	TOTAL LOAD REQUIRED(W)
1	CEILING LIGHT	20 WATT	32	640 W
2	SWITCH BOARD AT 1050 MM FROM FFL		16	
3	WALL BRACKET LIGHT AT 2100 MM FROM FFL	15 WATT	11	165 W
4	2/3 PIN 6A SWITCH SOCKET OUTLET AT 300 MM FROM FFL		3	
5	3 PIN 6/16A SWITCH SOCKET OUTLET AT 300 MM FROM FFL			
6	3 PIN 6/16A SWITCH SOCKET OUTLET AT 1800 MM FROM FFL GEYSER	2000W	4	8000 W
7	2/3 PIN 6A SWITCH SOCKET OUTLET FOR CHIMNEY	6 (A)	2	
8	EXHAUST FAN AS PER FOR DETAIL	50 W	5	250 W
9	CEILING FAN	60/70W	6	420 W
10	2 SWITCH AND 1 SOCKET 5A	5(A)		
11	1 SWITCH 1 SOCKET 5 A	5(A)	2	
12	1 SWITCH 1 SOCKET 15 A	15(A)	6	
13	WELCOME LIGHT			
14	BELL AT 2400 MM FROM FFL		2	
15	3 PIN 6/16A SWITCH SOCKET OUTLET AT 1800 MM FROM FFL AC	200 W	4	800 W

Sample Railway Electrification Drawings





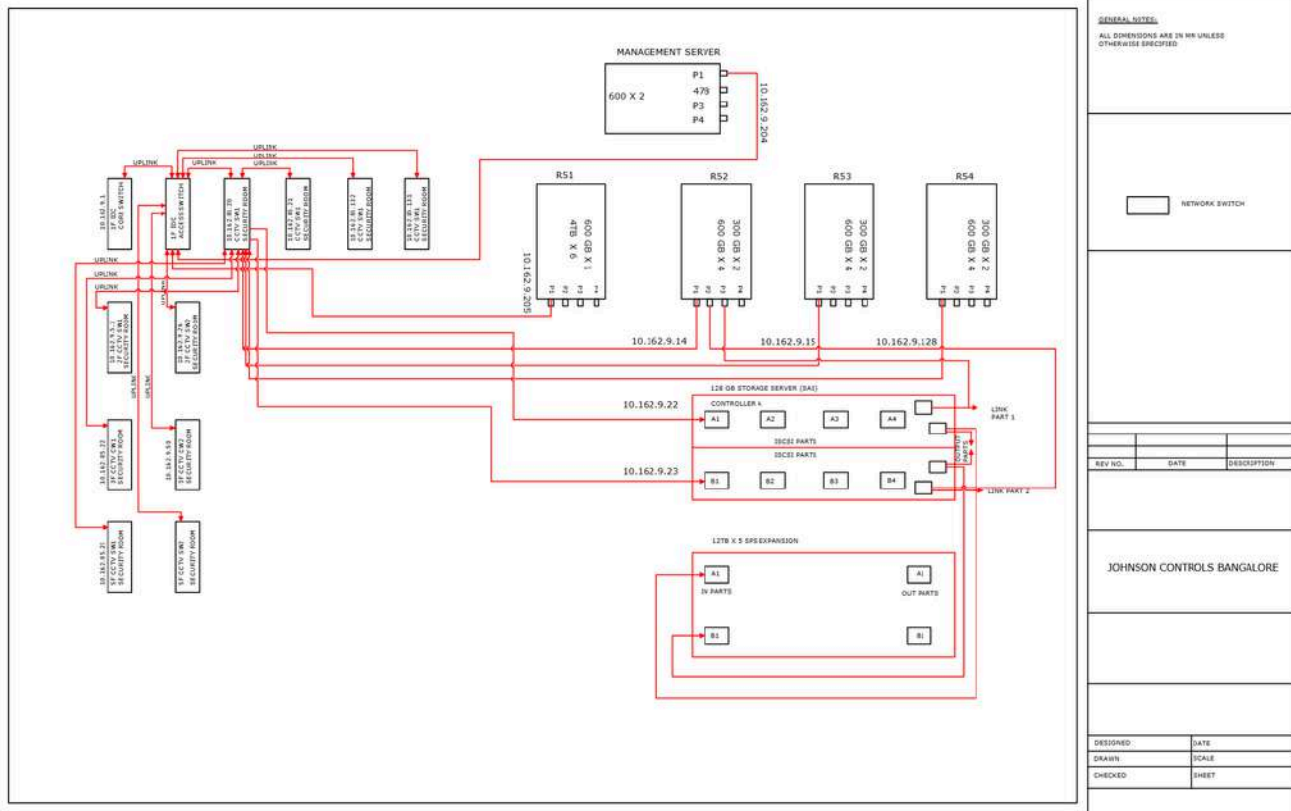
REGISTERED COMPANIES

PLACED STUDENTS

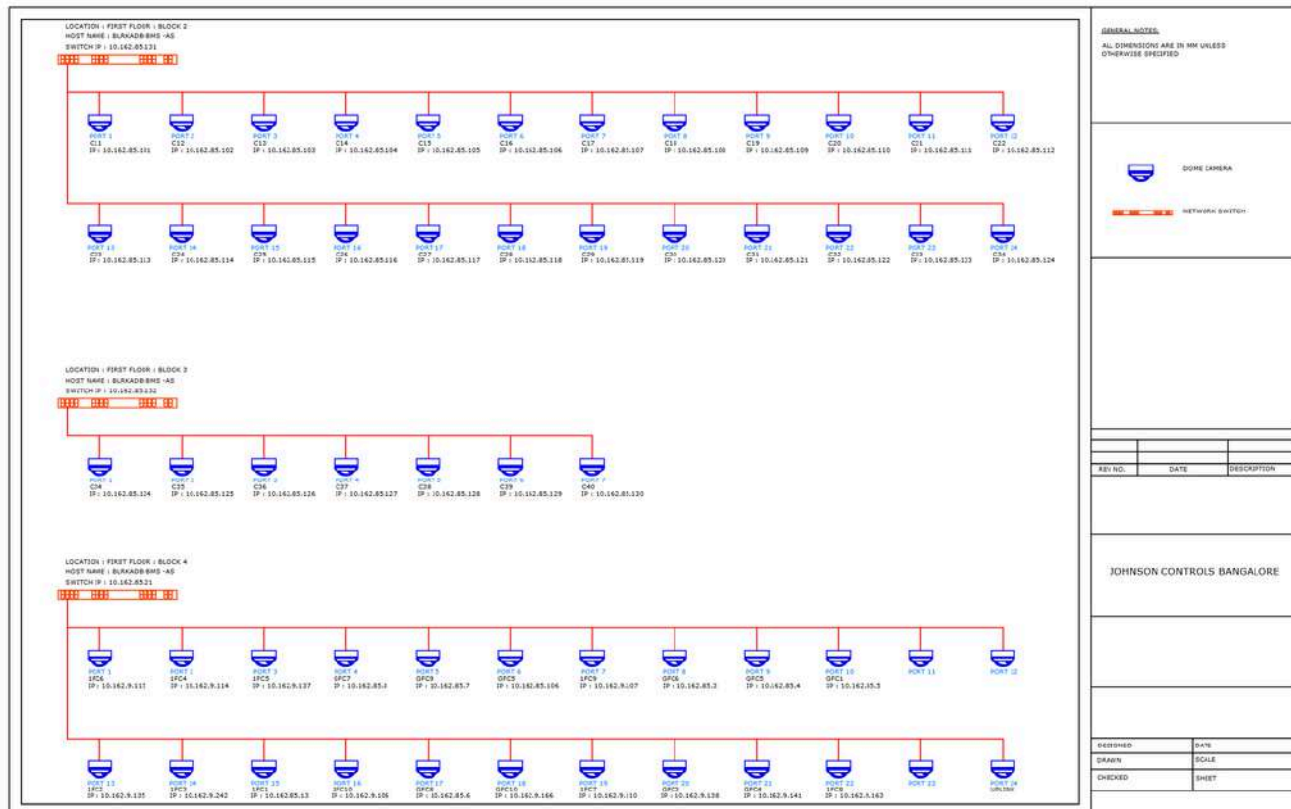
• MECH. CAD • CIVIL CAD • BIM CAD • ELEC. CAD • ACCOUNTING • GRAPHICS • DIGITAL MARKETING

TECHNICALLY IMPORTANT THINGS FOR INTERVIEW & CAREER

Study of - Server room electrical wiring - Johnson control practical drawings



Study of - CCTV wiring - Johnson control practical drawings





REGISTERED COMPANIES



PLACED STUDENTS

• MECH. CAD • CIVIL CAD • BIM CAD • ELEC. CAD • ACCOUNTING • GRAPHICS • DIGITAL MARKETING

PROFESSIONAL ELECTRICAL CAD
PLACEMENT COURSES FEE STRUCTURE

SL.No.	2 Course Program	3 Course Program
1	AutoCAD Electrical	AutoCAD Electrical
2	Revit MEP	Revit MEP
3	-	E-Plan
Actual Course Fee	29,000/-Rs	45,000/-Rs
Final Course Fee	25,500/-Rs + 1500/-Rs Books Fee	36,500/-Rs + 1500/-Rs Books Fee
Final Course Fee (1 EMI)	25,000/-Rs + Books Included	35,000/-Rs + Books Included

Note: • All the above discounts are applicable for the Offline Students, Passout after 2022
• There will be no change in the course program structure once receipt is generated
• Incase of any career gap, arrears / backlog meet the management for guidance.



REGISTERED COMPANIES

PLACED STUDENTS

• MECH. CAD • CIVIL CAD • BIM CAD • ELEC. CAD • ACCOUNTING • GRAPHICS • DIGITAL MARKETING

OUR PLACEMENT PARTNERS



MICRON ELECTRICALS



3D CONCEPT



IVORY SENSE



UNIT ALPHA



ELEMENT INFOMATICS



EMATRIX ENGG. LTD



PASOLITE



SOLID SYSTEMS



CONCEPT ENGINEERING



ROYAL LINKS



ENERGYAN LTD



CALIBER PVT. LTD



BAJAJ CAPITAL



VERVEE COURTURE



ENCLAVAR BUILDERS



ADARSH CONTROL



SHATHI FACADE'S



VARSHINORA DESIGN



AESTHETIX SPACES



REGISTERED COMPANIES



PLACED STUDENTS

• MECH. CAD • CIVIL CAD • BIM CAD • ELEC. CAD • ACCOUNTING • GRAPHICS • DIGITAL MARKETING

OUR PLACEMENT PARTNERS



ARCADIS



XNG AUTOMATION



NAUVATA ENGINEERING



FOCAL SYSTEMS



NEW FIELD ENGINEERING



BHILWARA INFOTECHNOLOGY LTD

BHILWARA INFOTECHNOLOGY



PINNACLE



STEEL KRAFT



ELEGANZ INTERIORS



MORPHLE LABS



CREATIVE TECHNOLOGY



SMART QUICK VENTURES



SANCTUM TECHNOLOGIES



GENESIS IT INNOVATIONS



CEA ENGG. AUTOMATION



STAR SWITCH GEARS



QUAD GEN



OLA ELECTRIC



SOBHA LIMITED

FOR MORE DETAILS ABOUT OUR PLACEMENT PARTNERS - PLEASE

VISIT THE BELOW WEBSITE LINK <https://cadenggr.com/placement-services>

SINCE 2007

(Software Training & Placement Services)



REGISTERED COMPANIES

PLACED STUDENTS



• MECH. CAD • CIVIL CAD • BIM CAD • ELEC. CAD • ACCOUNTING • GRAPHICS • DIGITAL MARKETING



Mr. Prasanna H.G.



Mr. Soumya Bhattacharya



Mr. PruthviRaj Singh K



Ms. Ruksana Banu



Mrs. Chaitra



Ms. Nikita Kumari Sah



Mrs. Sushmitha H M



Ms. Sneha Lakshmi CR

CONGRATULATIONS TO OUR PLACED STUDENTS



Devaki A M



K Akhilesh



Sumangala



Deepak M K



Prabhatika



A Meghana



Yuvraj N



Girish Kumar



Bheemanna



M Faras k P



Chidvilasya



Niranjana D



Prakash Das



Y Hemanth



Aromal SS



K Venu Gopal



B Dhinesh K



T Reshma



Mrunmay KS



Dhana Raj D



Krishna V



A Gaurav



G Preethika



Vigneash M



Padmapriya K



Yashik



A Charan



S Imtiaz Ali



Animesh M



Sujal C M



Vijay AS



Airish J



Manohar MN



Gowripriya



C Sandhya



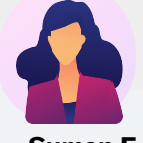
P Pavani



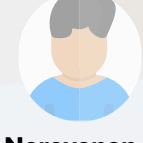
Ramanunni



D Saleem



Suman F



Narayanan



Adi Krishna C



Vaishnavi G



Munirathinam



Sambharam



Kiran D Patil



Niharika B



Mr. Uday Bhaskar Varada
Mrs. Priyanka Bhaskar Varada

Placement Partner



BHASKARS ENGINEERING DESIGN & IT CENTER



<https://cadenggr.com/placement-services>



+91 - 80500 91122 80500 41122

SINCE 2007

(Software Training & Placement Services)



125⁺



150⁺

REGISTERED COMPANIES

PLACED STUDENTS



• MECH. CAD • CIVIL CAD • BIM CAD • ELEC. CAD • ACCOUNTING • GRAPHICS • DIGITAL MARKETING

CONGRATULATIONS TO OUR PLACED STUDENTS



N Syedbasha



Vaishnavi



A Rahman



B Mohan



Amit Kumar



Venu Madhav



N Yogendra



VSai Venkat



Jeevitha



R Sateesh



P Firoz Khan



S Gowdhaman



D Ayisha



Girish C T



Ankitha G N



Neha K R



N Sai Sumathil



Deepak R



Niranjana R



Supreet K



Syed Saqib



Nagaraj R



Ganesh



M Charitha



K Pavan



Y G Sudhakar



P Vasantha



Tashvin



Pawan N S



Arun



Ayush



Vamsi J



Ravi Teja



Rohitha



Shahaji



Shuklodhana



Lokesh KA



Sai Chandana



RaviTeja



B Chandrasekhar



Monika S



Chandrasekhar



Y Thanuja



T Lokesh



Deepthi



R Sreeja



D Yugandhar



Manoj DN



Aishwarya N



VaniSree B



T Amarnath



BS Karthik



Asifulla Khan



Chandrashekar



Anil K



Krishnavasu



Shakthi K



Satish



Theja



Peter Joh



Adarsh G



M Alfaz



Vinay R



Megha D

Placement Partner



BHASKARS ENGINEERING DESIGN & IT CENTER

<https://cadenggrr.com/placement-services>



+91 - 80500 91122 80500 41122



REGISTERED COMPANIES

PLACED STUDENTS

• MECH. CAD • CIVIL CAD • BIM CAD • ELEC. CAD • ACCOUNTING • GRAPHICS • DIGITAL MARKETING

CONGRATULATIONS TO OUR PLACED STUDENTS



Vidya R



Pallavi B



P Mounika



Swathi R S



Manoj N S S



Suresh Babu



A Rekha



Elbin Jose



P Maneesha



Sandeep C



Abhishek K



B Mounika



Kavya R



R Azhar Ali



Thejasy



N Lokesh



H Vichitra



M Vinay



CR Pramoda



Vineeth N



Sivasankar



Dayanand



Venkat



M Gautham



B G Sunil



Abinraj



Pavan

Received Offers



Bhagyashree



Sharan B



Nitheesh N



Aasiya T



Tharun



Aasif khan



Dayananda G



M Hasheem



Vidya N



S Jaheer



Bhagyashree



Mausumi P



M Shireen



Rafi SM

FOR MORE DETAILS ABOUT OUR PLACED STUDENTS - PLEASE
VISIT THE BELOW WEBSITE LINK <https://cadenggr.com/placement-services>

Placement Partner



BHASKARS ENGINEERING DESIGN & IT CENTER

<https://cadenggr.com/placement-services>



+91 - 80500 91122 80500 41122



REGISTERED COMPANIES



PLACED STUDENTS

• MECH. CAD • CIVIL CAD • BIM CAD • ELEC. CAD • ACCOUNTING • GRAPHICS • DIGITAL MARKETING

GLIMPSE OF OUR PLACEMENT THUMB SIGN RULE - OUR SIGNATURE PIC

When student gets Job Opportunity from our centre, to share our happiness we pose a Thumb sign as a symbol of success





REGISTERED COMPANIES



PLACED STUDENTS

• MECH. CAD • CIVIL CAD • BIM CAD • ELEC. CAD • ACCOUNTING • GRAPHICS • DIGITAL MARKETING

GLIMPSE OF OUR SESSIONS

Resume preparation Sessions:



Students Examination:



Technical Sessions:





125 ⁺
REGISTERED COMPANIES



150 ⁺
PLACED STUDENTS

• MECH. CAD • CIVIL CAD • BIM CAD • ELEC. CAD • ACCOUNTING • GRAPHICS • DIGITAL MARKETING


GLIMPSE OF OUR SESSIONS



Placement Partner

 **BHASKARS ENGINEERING DESIGN & IT CENTER**

 <https://cadenggr.com/placement-services>

 **+91 - 80500 91122 80500 41122**



REGISTERED COMPANIES



PLACED STUDENTS

• MECH. CAD • CIVIL CAD • BIM CAD • ELEC. CAD • ACCOUNTING • GRAPHICS • DIGITAL MARKETING

GUEST VISIT TO OUR CENTER



BEST EMPLOYER RECRUITMENT AWARD

(Sep, 2024 – Aug, 2025)

for outstanding recruitment support

Sobha limited has recruited 7 resources in a short while

1. Vamsi J (8419/265) -
2. Shakthi (8418 / 95) -
3. Airish Jonas (8419/232) -
4. Vinay R (8419/266) -
5. BS Karthik (8418/120) -
6. G Venkata Raviteja (8419/306) -
7. D Yugandhar (8419/307) -



BEST EMPLOYER RECRUITMENT AWARD

(Sep, 2023 – Aug, 2024)

for outstanding recruitment support

TICS Engineering has recruited 7 resources with in 8 months, Interviewed most no. of students and supported us with Ontime communication.

1. Girish C T (8419/174)
2. Annangi Charan(8419 / 154)
3. N Lokesh (8419 / 142)
4. Sandeep Chandran (8419 / 125)
5. Elbin Jose (8419 / 112)
6. Girish Kumar(8419 / 92)
7. Yuvraj N (8419 / 86)





REGISTERED COMPANIES



PLACED STUDENTS

• MECH. CAD • CIVIL CAD • BIM CAD • ELEC. CAD • ACCOUNTING • GRAPHICS • DIGITAL MARKETING

GLIMPSE OF OUR SOCIAL SERVICE EVENTS

Initiated Blood Donation Campaign on reaching our 1st Mile Stone
 100th Placement in our Centre



Placement Partner

BHASKARS ENGINEERING DESIGN & IT CENTER

<https://cadenggr.com/placement-services>

+91 - 80500 91122 80500 41122



REGISTERED COMPANIES



PLACED STUDENTS



• MECH. CAD • CIVIL CAD • BIM CAD • ELEC. CAD • ACCOUNTING • GRAPHICS • DIGITAL MARKETING

GLIMPSE OF AWARDS, EVENTS & CELEBRATIONS





REGISTERED COMPANIES



PLACED STUDENTS

• MECH. CAD • CIVIL CAD • BIM CAD • ELEC. CAD • ACCOUNTING • GRAPHICS • DIGITAL MARKETING

GLIMPSE OF AWARDS, EVENTS & CELEBRATIONS



Placement Partner



BHASKARS ENGINEERING DESIGN & IT CENTER

<https://cadenggr.com/placement-services>





REGISTERED COMPANIES



PLACED STUDENTS

• MECH. CAD • CIVIL CAD • BIM CAD • ELEC. CAD • ACCOUNTING • GRAPHICS • DIGITAL MARKETING

BEST QUALITY TRAINING

In the all India CADDESK Software Training Summit held in March 2025, Caddesk Bommanhalli is Awarded as the “Best Quality Training Institute” & “Best Marketing Parctice centre”



Placement Partner



BHASKARS ENGINEERING DESIGN & IT CENTER

<https://cadenggr.com/placement-services>





REGISTERED COMPANIES

PLACED STUDENTS

• MECH. CAD • CIVIL CAD • BIM CAD • ELEC. CAD • ACCOUNTING • GRAPHICS • DIGITAL MARKETING

PLACEMENT CATEGORY COURSE PROGRAMS & FEE STRUCTURE

TRAINING & PLACEMENT UNIT									
PLACEMENT GUARANTEED COURSE PROGRAMS & FEE STRUCTURE									
Master CAD Mechanical (4 / 5 / 6 Course Programs)									
SL.No.	4 Course Program	5 Course Program	6 Course Program	SL.No.	4 Course Program	5 Course Program	6 Course Program	SL.No.	5 Course Program
1	AutoCAD	AutoCAD	AutoCAD	1	AutoCAD	AutoCAD	AutoCAD	1	AutoCAD
2	Solidworks	Solidworks	Solidworks	2	Sketch Up	Sketch up	Sketch up	2	Sketch up
3	Cre-O	Cre-O	Catia	3	V-Ray	Enscape	Enscape	3	V-Ray
4	Gd & T	Nx-CAD	Nx-CAD	4	Revit Arch.	Revit Arch.	Revit Arch.	4	Revit Arch.
5	-	Gd & T	Cre-O	5	-	3ds Max	3ds Max	5	Revit MEP
6	-	-	Gd & T	6	-	-	3ds Max-V-Ray	6	Revit Structure
Actual Course Fee	42,500/-Rs	56,500/-Rs	69,500/-Rs	Actual Course Fee	38,500/-Rs	51,500/-Rs	62,500/-Rs	Actual Course Fee	54,500/-Rs
Final Course Fee (2 EMI)	31,500/-Rs + 2000/-Rs Books Fee	38,500/-Rs + 2500/-Rs Books Fee	46,500/-Rs + 3000/-Rs Books Fee	Final Course Fee (2 EMI)	31,500/-Rs + 1500/-Rs Books Fee	38,500/-Rs + 2500/-Rs Books Fee	46,500/-Rs + 2500/-Rs Books Fee	Final Course Fee (2 EMI)	40,500/-Rs + 2500/-Rs Books Fee
Final Course Fee (1 EMI)	30,500/-Rs + Books Included	36,500/-Rs + Books Included	44,500/-Rs + Books Included	Final Course Fee (1 EMI)	30,500/-Rs + Books Included	36,500/-Rs + Books Included	44,500/-Rs + Books Included	Final Course Fee (1 EMI)	40,000/-Rs Books Fee Incl.
Master CAD Civil/Arch./Interior (5 / 6 / 7 Course Programs)									
SL.No.	5 Course Program	6 Course Program	7 Course Program	SL.No.	5 Course Program	6 Course Program	7 Course Program	SL.No.	5 Course Program
1	AutoCAD	AutoCAD	AutoCAD	1	AutoCAD	AutoCAD	AutoCAD	1	AutoCAD
2	Sketch up	Sketch up	Sketch up	2	Sketch up	Sketch up	Sketch up	2	Sketch up
3	V-Ray	Enscape	Enscape	3	V-Ray	Enscape	Enscape	3	V-Ray
4	Revit Arch.	Revit Arch.	Revit Arch.	4	Revit Arch.	Revit Arch.	Revit Arch.	4	Revit Arch.
5	Revit MEP	Revit MEP	Revit MEP	5	Revit MEP	Revit MEP	Revit MEP	5	Revit MEP
6	-	Revit Structure	Revit Structure	6	-	Revit Structure	Revit Structure	6	Revit Structure
7	-	-	Quantity Take off	7	-	-	-	7	Quantity Take off
Actual Course Fee	54,500/-Rs	67,500/-Rs	74,000/-Rs	Actual Course Fee	54,500/-Rs	67,500/-Rs	74,000/-Rs	Actual Course Fee	54,500/-Rs
Final Course Fee (2 EMI)	40,500/-Rs + 2500/-Rs Books Fee	46,500/-Rs + 3500/-Rs Books Fee	52,000/-Rs + 4000/-Rs Books Fee	Final Course Fee (2 EMI)	40,500/-Rs + 2500/-Rs Books Fee	46,500/-Rs + 3500/-Rs Books Fee	52,000/-Rs + 4000/-Rs Books Fee	Final Course Fee (2 EMI)	40,500/-Rs + 2500/-Rs Books Fee
Final Course Fee (1 EMI)	40,000/-Rs Books Fee Incl.	44,500/-Rs Books Fee Incl.	51,000/-Rs Books Fee Incl.	Final Course Fee (1 EMI)	40,000/-Rs Books Fee Incl.	44,500/-Rs Books Fee Incl.	51,000/-Rs Books Fee Incl.	Final Course Fee (1 EMI)	40,000/-Rs Books Fee Incl.
Master CAD BIM (5 / 6 / 7 Course Programs)									
SL.No.	5 Course Program	6 Course Program	7 Course Program	SL.No.	5 Course Program	6 Course Program	7 Course Program	SL.No.	5 Course Program
1	AutoCAD	AutoCAD	AutoCAD	1	AutoCAD	AutoCAD	AutoCAD	1	AutoCAD
2	Sketch up	Sketch up	Sketch up	2	Sketch up	Sketch up	Sketch up	2	Sketch up
3	V-Ray	Enscape	Enscape	3	V-Ray	Enscape	Enscape	3	V-Ray
4	Revit Arch.	Revit Arch.	Revit Arch.	4	Revit Arch.	Revit Arch.	Revit Arch.	4	Revit Arch.
5	Revit MEP	Revit MEP	Revit MEP	5	Revit MEP	Revit MEP	Revit MEP	5	Revit MEP
6	-	Revit Structure	Revit Structure	6	-	Revit Structure	Revit Structure	6	Revit Structure
7	-	-	Quantity Take off	7	-	-	-	7	Quantity Take off
Actual Course Fee	54,500/-Rs	67,500/-Rs	74,000/-Rs	Actual Course Fee	54,500/-Rs	67,500/-Rs	74,000/-Rs	Actual Course Fee	54,500/-Rs
Final Course Fee (2 EMI)	40,500/-Rs + 2500/-Rs Books Fee	46,500/-Rs + 3500/-Rs Books Fee	52,000/-Rs + 4000/-Rs Books Fee	Final Course Fee (2 EMI)	40,500/-Rs + 2500/-Rs Books Fee	46,500/-Rs + 3500/-Rs Books Fee	52,000/-Rs + 4000/-Rs Books Fee	Final Course Fee (2 EMI)	40,500/-Rs + 2500/-Rs Books Fee
Final Course Fee (1 EMI)	40,000/-Rs Books Fee Incl.	44,500/-Rs Books Fee Incl.	51,000/-Rs Books Fee Incl.	Final Course Fee (1 EMI)	40,000/-Rs Books Fee Incl.	44,500/-Rs Books Fee Incl.	51,000/-Rs Books Fee Incl.	Final Course Fee (1 EMI)	40,000/-Rs Books Fee Incl.
Adv. Diploma in Digital Marketing (3 Course Programs)									
SL.No.	3 Course Program	SL.No.	3 Course Program	SL.No.	3 Course Program	SL.No.	3 Course Program	SL.No.	3 Course Program
1	Digital Marketing	1	Digital Marketing	1	Digital Marketing	1	Digital Marketing	1	Digital Marketing
2	Photoshop	2	Photoshop	2	Photoshop	2	Photoshop	2	Photoshop
3	Illustrator	3	Illustrator	3	Illustrator	3	Illustrator	3	Illustrator
Actual Course Fee	54,000/-Rs	Actual Course Fee	54,000/-Rs	Actual Course Fee	54,000/-Rs	Actual Course Fee	54,000/-Rs	Actual Course Fee	54,000/-Rs
Final Course Fee (2 EMI)	42,500/-Rs + 1000/-Rs Books Fee	Final Course Fee (2 EMI)	42,500/-Rs + 1000/-Rs Books Fee	Final Course Fee (2 EMI)	42,500/-Rs + 1000/-Rs Books Fee	Final Course Fee (2 EMI)	42,500/-Rs + 1000/-Rs Books Fee	Final Course Fee (2 EMI)	42,500/-Rs + 1000/-Rs Books Fee
Final Course Fee (1 EMI)	40,000/-Rs + Books Incl.	Final Course Fee (1 EMI)	40,000/-Rs + Books Incl.	Final Course Fee (1 EMI)	40,000/-Rs + Books Incl.	Final Course Fee (1 EMI)	40,000/-Rs + Books Incl.	Final Course Fee (1 EMI)	40,000/-Rs + Books Incl.
Adv. Diploma & Basic Diploma Accounting (2 / 3 / 4 Course Programs)									
SL.No.	2 Course Program	3 Course Program	4 Course Program	SL.No.	2 Course Program	3 Course Program	4 Course Program	SL.No.	2 Course Program
1	Tally Prime	Tally Prime	Tally Prime	1	Tally Prime	Tally Prime	Tally Prime	1	Tally Prime
2	SAP Fico	SAP Fico	SAP Fico	2	SAP Fico	SAP Fico	SAP Fico	2	SAP Fico
3	Adv. Excel	Adv. Excel	Adv. Excel	3	Adv. Excel	Adv. Excel	Adv. Excel	3	Adv. Excel
4	-	-	SAP Fico	4	-	-	SAP Fico	4	-
Actual Course Fee	34,000/-Rs	42,500/-Rs	50,500/-Rs	Actual Course Fee	34,000/-Rs	42,500/-Rs	50,500/-Rs	Actual Course Fee	34,000/-Rs
Final Course Fee (2 EMI)	27,000/-Rs + 500/-Rs Books Fee + Server Fee	36,000/-Rs + 1000/-Rs Books Fee + Server Fee	42,500/-Rs + 1500/-Rs Books Fee + Server Fee	Final Course Fee (2 EMI)	27,000/-Rs + 500/-Rs Books Fee + Server Fee	36,000/-Rs + 1000/-Rs Books Fee + Server Fee	42,500/-Rs + 1500/-Rs Books Fee + Server Fee	Final Course Fee (2 EMI)	27,000/-Rs + 500/-Rs Books Fee + Server Fee
Final Course Fee (1 EMI)	26,000/-Rs + Books Incl. + Server Fee Exc.	34,000/-Rs + Books Incl. + Server Fee Exc.	40,000/-Rs + Books Incl. + Server Fee Exc.	Final Course Fee (1 EMI)	26,000/-Rs + Books Incl. + Server Fee Exc.	34,000/-Rs + Books Incl. + Server Fee Exc.	40,000/-Rs + Books Incl. + Server Fee Exc.	Final Course Fee (1 EMI)	26,000/-Rs + Books Incl. + Server Fee Exc.
Prof. Electrical CAD (2 / 3 Course Programs)									
SL.No.	2 Course Program	3 Course Program	SL.No.	2 Course Program	3 Course Program	SL.No.	2 Course Program	3 Course Program	SL.No.
1	AutoCAD Electrical	AutoCAD Electrical	1	AutoCAD Electrical	AutoCAD Electrical	1	AutoCAD Electrical	AutoCAD Electrical	1
2	Revit MEP	Revit MEP	2	Revit MEP	Revit MEP	2	Revit MEP	Revit MEP	2
3	-	E-Plan	3	-	E-Plan	3	-	E-Plan	3
Actual Course Fee	29,000/-Rs	45,000/-Rs	Actual Course Fee	29,000/-Rs	45,000/-Rs	Actual Course Fee	29,000/-Rs	45,000/-Rs	Actual Course Fee
Final Course Fee	26,500/-Rs + 1500/-Rs Books Fee	36,500/-Rs + 1500/-Rs Books Fee	Final Course Fee	26,500/-Rs + 1500/-Rs Books Fee	36,500/-Rs + 1500/-Rs Books Fee	Final Course Fee	26,500/-Rs + 1500/-Rs Books Fee	36,500/-Rs + 1500/-Rs Books Fee	Final Course Fee
Final Course Fee (1 EMI)	25,000/-Rs + Books Included	35,000/-Rs + Books Included	Final Course Fee (1 EMI)	25,000/-Rs + Books Included	35,000/-Rs + Books Included	Final Course Fee (1 EMI)	25,000/-Rs + Books Included	35,000/-Rs + Books Included	Final Course Fee (1 EMI)
Full Stack Courses (Only Training)									
SL.No.	Python Full Stack	Java Full Stack	SL.No.	Python Full Stack	Java Full Stack	SL.No.	Python Full Stack	Java Full Stack	SL.No.
1	Python	Java	1	Python	Java	1	Python	Java	1
2	Django	Adv. Java	2	Django	Adv. Java	2	Django	Adv. Java	2
3	HTML	HTML	3	HTML	HTML	3	HTML	HTML	3
4	CSS	CSS	4	CSS	CSS	4	CSS	CSS	4
5	Java Script	Java Script	5	Java Script	Java Script	5	Java Script	Java Script	5
6	My Sql	My Sql	6	My Sql	My Sql	6	My Sql	My Sql	6
Actual Course Fee	54,000/-Rs	49,000/-Rs	Actual Course Fee	54,000/-Rs	49,000/-Rs	Actual Course Fee	54,000/-Rs	49,000/-Rs	Actual Course Fee
Final Course Fee	38,500/-Rs + 1000/-Rs Books	37,500/-Rs + 1000/-Rs Books	Final Course Fee	38,500/-Rs + 1000/-Rs Books	37,500/-Rs + 1000/-Rs Books	Final Course Fee	38,500/-Rs + 1000/-Rs Books	37,500/-Rs + 1000/-Rs Books	Final Course Fee
Final Course Fee (1 EMI)	36,000/-Rs + Incl. Books	35,000/-Rs + Incl. Books	Final Course Fee (1 EMI)	36,000/-Rs + Incl. Books	35,000/-Rs + Incl. Books	Final Course Fee (1 EMI)	36,000/-Rs + Incl. Books	35,000/-Rs + Incl. Books	Final Course Fee (1 EMI)

Note: • All the above discounts are applicable for the Offline Students, Passout after 2022
• There will be no change in the course program structure once receipt is generated.

Click the web link for Placement Category Courses / Rotate and See the details here

<https://caddeskbangalore-bommanhalli.com/software-discount>





REGISTERED COMPANIES

PLACED STUDENTS

• MECH. CAD • CIVIL CAD • BIM CAD • ELEC. CAD • ACCOUNTING • GRAPHICS • DIGITAL MARKETING

CERTIFICATION

At CADDESK/ITDESK Bommanhalli & Madiwala, we strive to provide the highest quality Software training to individuals seeking to improve their skills in the field. Our mission is to ensure that our students receive the Software Education and Knowledge necessary to succeed in their Career with good Job Opportunity. Category of Certification (Sample certificates below):

1. **Single Software Certification - CAD/IT Certification**
2. **Two Software Certification - Diploma CAD/IT Certification**
3. **Three Software Certification - Professional/Advance Diploma CAD/IT Certification**
4. **Four+ Software Certification - Master Diploma in CAD/IT Certification - (Highest Cer**





REGISTERED COMPANIES



PLACED STUDENTS

• MECH. CAD • CIVIL CAD • BIM CAD • ELEC. CAD • ACCOUNTING • GRAPHICS • DIGITAL MARKETING

JOIN & REFER OTHERS



Dear upcoming students / CADDESK/ITDESK Bommanhalli & Madiwala students - appreciate your trust in our Training and Placement process.

★ Join & Refer your friend to gain good Software Knowledge

★ Join & Refer your friend to Develop Skills

★ Join & Refer your friend to Grab Good Job Opportunity

★ Join & Refer your friend for a Bright Career

★ Join & Refer your friend for a better society





REGISTERED COMPANIES



PLACED STUDENTS

TOP LEVEL /
CMMI LEVEL
ORGANIZATIONS

• MECH. CAD • CIVIL CAD • BIM CAD • ELEC. CAD • ACCOUNTING • GRAPHICS • DIGITAL MARKETING

IMPORTANT QUESTION & ANSWERS

1. What is the amount of Practice time needed to gain skill in the software?

A Student who is willing to start the career in Software field, He/She needs to Spend atleast 2-3 hours quality time in practicing the software. (Expecting He/She has basic subject knowledge)

2. Is it really necessary to practice every day?

Practice develops 3 major important characteristics

- SPEED - PERFECTION & - ACCURACY

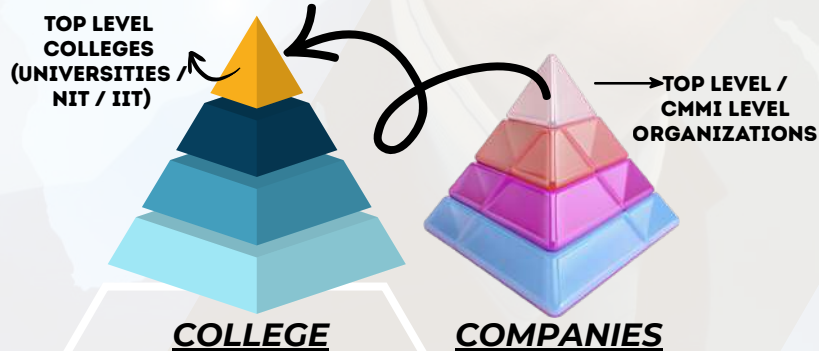
Having the Idea in software is basic, in reality when a CAD /IT student attend the Interview the main focus by Interviewers is on the level Speed, Accuracy and Perfection.



3. Why does a student who come out from the college (Job less / No Campus Jobs) have tough situation outside? Why there is more competition for software Jobs?

Please understand the Hierarchy model of the Organizations & Colleges in the below link and answer for many questions related to Top level companies, Salary, Competition outside etc.

https://youtu.be/X4cJEw_4wmo



4. If the student is Good in Software only, wether he will get the right Job?

5. If the student is Good in Communication only, wether he will get the right Job?

6. If the student has 90% only in his academics, wether he will get the right Job?

7. Student has good skills but does not have perfect resume, wether he may get right Job?

8. What are the Expectation of the Organizations from the Job Seekers?

Click the link to see the Tour to Mechanical CAD Software class <https://youtu.be/IZB7UUn9aw0>

Click the link to see the Tour to Civil CAD Software class <https://youtu.be/6Ra29Gk3FIY>

Click the link to see Glimpse of English Class room session - <https://youtu.be/Wn9lIxsoQkM>

Click the link to see Glimpse of resume writing session <https://youtu.be/NqG1t7L73K8>

Click the link to see the Expectation of the Organization from Job Seekers <https://youtu.be/RzyjMTCrheY>

"OUR AIM OVER ALL SKILL DEVELOPMENT"

Page 32



REGISTERED COMPANIES



PLACED STUDENTS

• MECH. CAD • CIVIL CAD • BIM CAD • ELEC. CAD • ACCOUNTING • GRAPHICS • DIGITAL MARKETING

ORGANIZATION SELECTION CRITERIA



FINALLY THE ORGANIZATIONS LOOK FOR OVERALL SKILL IN THE RESOURCES

**In our training process we aim to develop Skills & Awareness
"OVER ALL SKILL DEVELOPMENT"**

**Communication skills + Software skills + Technical skills +
Behavior + Awareness of (Presentation + Commitment +
Responsibility & others)**





REGISTERED COMPANIES



PLACED STUDENTS

• MECH. CAD • CIVIL CAD • BIM CAD • ELEC. CAD • ACCOUNTING • GRAPHICS • DIGITAL MARKETING

TIME FOR REGISTRATION

Dear aspirants / career seekers who are interested in the Software Training and Placement, Please find the 4 steps.

Step 1: Feel free to contact us & clarify any query

Step 2: Please see the Domain (Civil/Mech/Elec/Accounting/Graphic etc.) related Brochure for Content, Student Projects, Course fee etc.

Step 3: With a nominal token registration fee Book your time and slot

Step 4: Now click the link here to register



**TRAINING
&
PLACEMENTS**



<https://caddeskbangalore-bommanhalli.com/payments-%26-registration>

CONTACT US

Placement Partner



BHASKARS ENGINEERING DESIGN & IT CENTER



<https://cadenggr.com/placement-services>

Training Website



<https://caddeskbangalore-bommanhalli.com>



+91 - 80500 91122 80500 41122